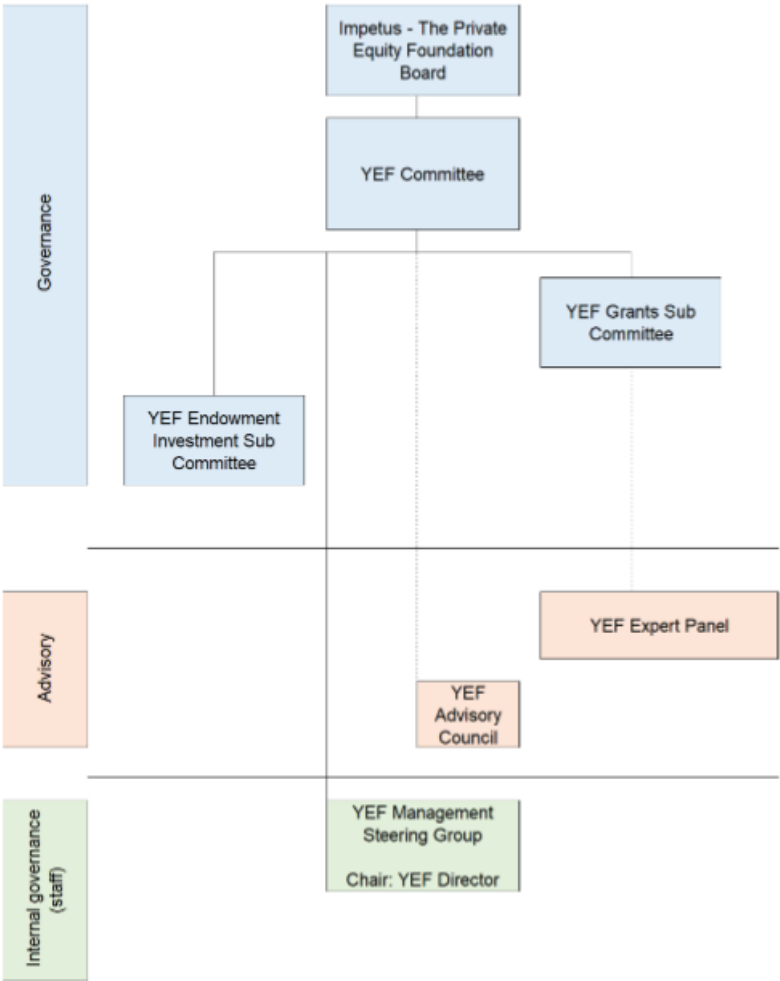


Annex 1: Governance structure, communications and approvals



Lines in the structure above indicate lines of communication across the functions.

Role:	Membership:
<b>Governance</b> of I-PEF . Sole Corporate Trustee of the YEF Charitable Trust. Power to establish committees.	Impetus Trustees  Independent chair <redacted>, 1 Impetus nominated member, 1 EIF nominated member, 1 SIB nominated member, 1 Home Office representative, other co-opted members as agreed by the committee to represent other expertise.
<b>Fund administration and management</b> , Reporting to I-PEF Board and exercising delegated powers. EIF and SIB consent needed to select a Chair for the committee	2 Impetus nominees and 6 co-opted members: 2 of which nominated by EIF, 1 nominated by SIB, 1 nominated by Home Office, 2 independent members jointly nominated by Impetus, EIF and SIB.
<b>Grants:</b> Recommendation of a grant giving strategy. Approval of grants and/or recommendation of a grant awards to YEF Committee.	2 Impetus nominated members, 2 SIB nominated members, and 1 or 2 co-opted members with investment fund experience
<b>Investment Management</b> for the endowment investment including oversight of fund manager. Reporting to the YEF Committee.	
<b>Expert academic advice</b> on technical matters relating to the suitability of grant applications. (EIF is Panel Lead)	Experts and senior figures in the field
<b>Strategic insights</b> , advice and guidance. (Impetus is Council lead.)	Community and youth representatives, experts and senior figures in the field
Senior management group for YEF project	