

Performance Tracker

Leeds Youth Offending Service



Version number:	Version 1.2
Date produced:	02/09/2013
Created by:	Stephen Deathe
Contact details:	stephen.deathe@leeds.gov.uk
Status:	Draft
Filepath:	G:\YOSALLMANS\PERFORMANCE\MONTHLY TRACKER
Protective marking:	NOT PROTECTIVELY MARKED



First Time Entrants

Breakdown by Area:

Count of CASE ID				
	East North East	South South East	West North West	Grand Total
May 2013	5	3	1	9
April 2013	5	3	5	13
June 2013	2	2		4
Grand Total	12	8	6	26

Breakdown by Age:

Count of CASE ID				
	May 2013	April 2013	June 2013	Grand Total
11	1	1		2
13		2	1	3
14	1	1	1	3
15	1		1	2
16	1	5	1	7
17	4	4		8
18	1			1
Grand Total	9	13	4	26

Breakdown by Gender:

Count of CASE ID				
	April 2013	June 2013	May 2013	Grand Total
F	2		3	5
M	11	4	6	21
Grand Total	13	4	9	26

Summary:

The number of first time entrants continues to fall. The number for this quarter (26) is 93% down on the same quarter for 2009/10 when there were 339 first time entrants.

This downward trend is highlighted more clearly when the Q1 data for 2009/10 is compared with the full year figure reported at the last meeting, where there were 305 first time entrants for the whole of 2012/13.

These numbers are the raw figures taken from YOT data but the national reporting for this indicator is based on the data from the Police national Computer (PNC) and is reported as figure per 100,000 of the 10-17 general population.

New Interventions Opened

10 Most Frequent Interventions by Area

Count of PUPIL ID	DTO Post Custody/Licence Programme	DTO/Custody Programme	Final Warning Programme	Integrated Resettlement Support (Previously Core RAP)	Other	Prevention Programme	Referral Order	Voluntary Support Programme	Youth Conditional Caution	Youth Rehabilitation Order	Grand Total
ENE	6	3	3	5	15		9	15	11	20	87
SSE	2	6	7	7	1	3	8	6	8	13	61
WNW	2	3	3	5	4	8	12	1	8	12	58
Grand Total	10	12	13	17	20	11	29	22	27	45	206

New Interventions

Count of PUPIL ID	April 2013	June 2013	May 2013	Grand Total
ENE	32	34	39	105
O	1			1
SSE	28	30	21	79
WNW	33	23	23	79
Grand Total	94	87	83	264

Summary:

The number of new interventions started in this quarter (264) has fallen by 23% compared with the same period (344) last year.

YRO's remain the most frequent sentence with 45 orders made this quarter compared with 47 in the same quarter last year. In contrast, the number of Youth Rehabilitation Orders made has dropped from 85 in Q1 2012/13 to 45 in this current quarter. There has also been a fall in out of court disposals that has contributed to the overall drop in new interventions.

DTO/Custody cases (including section 91/92 cases) have also fallen in this quarter with 14 cases compared to 32 in the same quarter last year. The table below also highlights that BME groups are no longer over represented in DTO/Custody cases.

Ten Most Frequent Interventions by Ethnicity

Offences:

Count of Offences

	April 2013	June 2013	May 2013	Grand Total
ENE	17	39	49	105
SSE	19	14	16	49
WNW	28	22	28	78
Grand Total	64	75	93	232

Summary:

The number of offences where there is a substantive outcome has reduced to 232 compared with 574 for the same quarter last year.

Ten Most Frequent Offences:

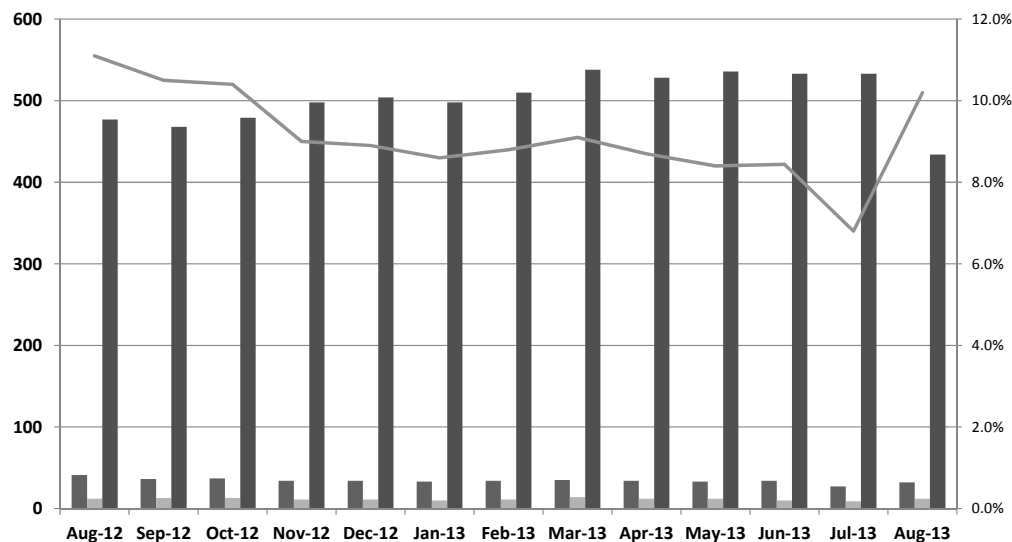
Count of Offences

	THEFT AND HANDLING	CRIMINAL DAMAGE	DOMESTIC BURGLARY	VIOLENCE AGAINST THE PERSON	VEHICLE THEFT	ROBBERY	BREACH OF BAIL	NON DOMESTIC BURGLARY	OTHER	DRUGS OFFENCE	Grand Total
ENE	52	6	12	14	1	7	5	1	2		100
SSE	19	5	3	6	2	4	1	5	1	3	49
WNW	10	21	16	10	18	1					76
Grand Total	81	32	31	30	21	12	6	6	3	3	225

Summary:

Violence against the person offences have dropped significantly in the last 12 months with 30 cases in this quarter compared with 111 cases in the same quarter last year. Theft and Handling cases have also reduced but by a much smaller number i.e. 81 cases this year compared with 94 twelve months ago.

CLA Known to the Youth Offending Service



Summary:

The YOS has recently conducted a caseload review that has resulted in a number of older cases and some voluntary interventions been closed down. At the end of August 2013 there were 434 current cases under supervision. The number of children that are looked after has remained fairly static over the same period and as a result has led to a rise in the proportion of CLA within the active caseload. It is planned for more detailed information to be submitted to the Multi Agency Looked After Partnership (MALAP) meetings. These convene monthly and discussions are underway to look at what type of information will be supportive. Future Partnership reports will reflect this information.

Select Yot:

Leeds



FINAL v0.3

Leeds Data Summary April - June 2013

* Select the desired
YOTS on YOT
comparison tab

Indicators

FTE PNC rate per 100,000 of 10-17 population **Good performance is typified by a negative percentage

	Leeds YOT	Yorkshire Region	West Yorkshire RCC area	YOT comparison group selected*	England
Apr 12 - Mar 13 (latest period)	604	494	448	610	514
Apr 11 - Mar 12	837	676	675	830	691
percent change from selected baseline	-27.9%	-27.0%	-33.6%	-26.5%	-25.6%

Select FTE baseline

Apr 11 - Mar 12

Custody current period

Jul 12 - Jun 13

Apr - Jun 11

Reoffending baseline

Oct 09 - Sep 10

Use of custody rate per 1,000 of 10 -17 population **Good performance is typified by a low rate

	Leeds YOT	Yorkshire Region	West Yorkshire RCC area	YOT comparison group selected*	England
Jul 12 - Jun 13 (latest period)	N/A	0.47	0.40	0.88	0.50
Apr - Jun 11	0.45	0.28	0.35	0.41	0.21
change from selected baseline	N/A	0.18	0.04	0.47	0.29

Reoffending rates after 12 months

	Leeds YOT	Yorkshire Region	West Yorkshire RCC area	YOT comparison group selected*	England
frequency rate - Oct 10 - Sep 11 cohort (latest period)	1.04	1.10	1.04	1.18	1.04
frequency rate - Oct 09 - Sep 10 cohort	1.01	1.07	1.04	1.15	0.99
change from selected baseline	0.03	0.03	0.00	0.03	0.06
binary rate - Oct 10 - Sep 11 cohort (latest period)	36.9%	36.6%	35.9%	39.5%	36.1%
binary rate - Oct 09 - Sep 10 cohort	37.9%	36.5%	36.8%	38.1%	34.8%
percentage point change from selected baseline	-1.0%	0.1%	-0.9%	1.5%	1.3%

Throughput data Apr - Jun 13

Total offences

N/A

Total disposals

N/A

MIS case-level data is accurate only where returned in latest data format (v1.4)

232 Offences

242 Disposals

Leeds
YOS
Data