



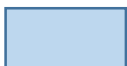








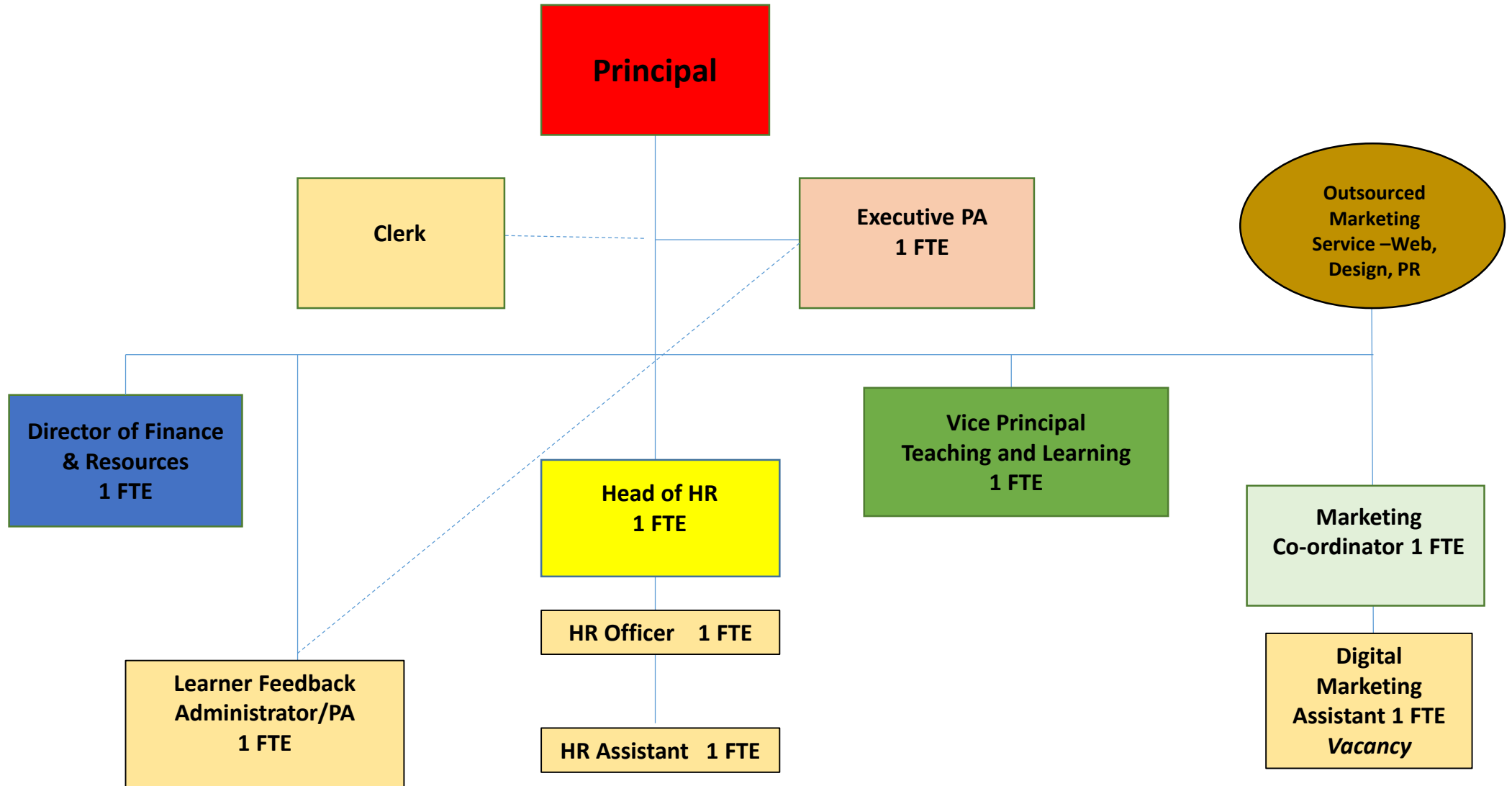


Staffing Structure

	Principal		
	Vice Principals		Co-ordinators
	Directors		Team Leaders
	Heads		Staff without management responsibility
	Managers		Administrators
	Academic Managers		Sessional staff
	Established Teachers		Outsourced services



Director of Finance & Resources
1 FTE

Director MIS and IT
0.8 FTE

Head of Finance
0.8 FTE

Events, Hires & Facilities Manager
1 FTE

Systems & Reporting Manager
1 FTE

Learner Data/Exams Team Leader
1 FTE

IT Team Leader
1 FTE

Data & Reporting Analyst
1 FTE

Curriculum Performance Analyst
1 FTE

Learner Data / Exams Assistant
2 FTE

Senior Systems Engineer
1 FTE

Payroll Officer
1 FTE

Purchase Ledger & Income Officer
1 FTE
Vacancy

Finance Officer
1 FTE

Outsourced Catering, Cleaning, Night Security

Caretaking Team Leader

Residential Support Co-ordinator
1 FTE

Sessional Learner Data / Exams Assistant

Second Line IT Engineers
2 FTE

Finance Assistant
1 FTE
Vacancy

Finance Apprentice

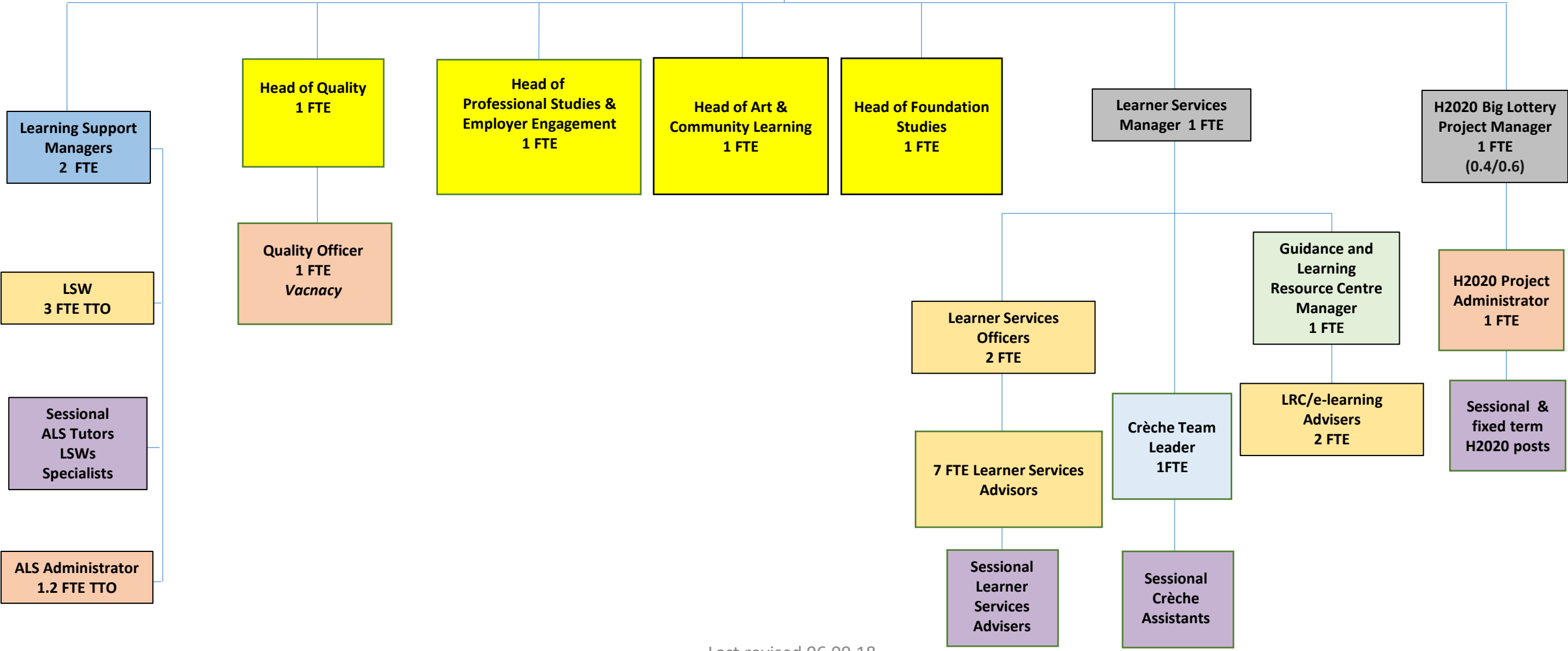
IT Apprentice x 2 (to include Repro)

Hires & Events Co-ordinator
1 FTE

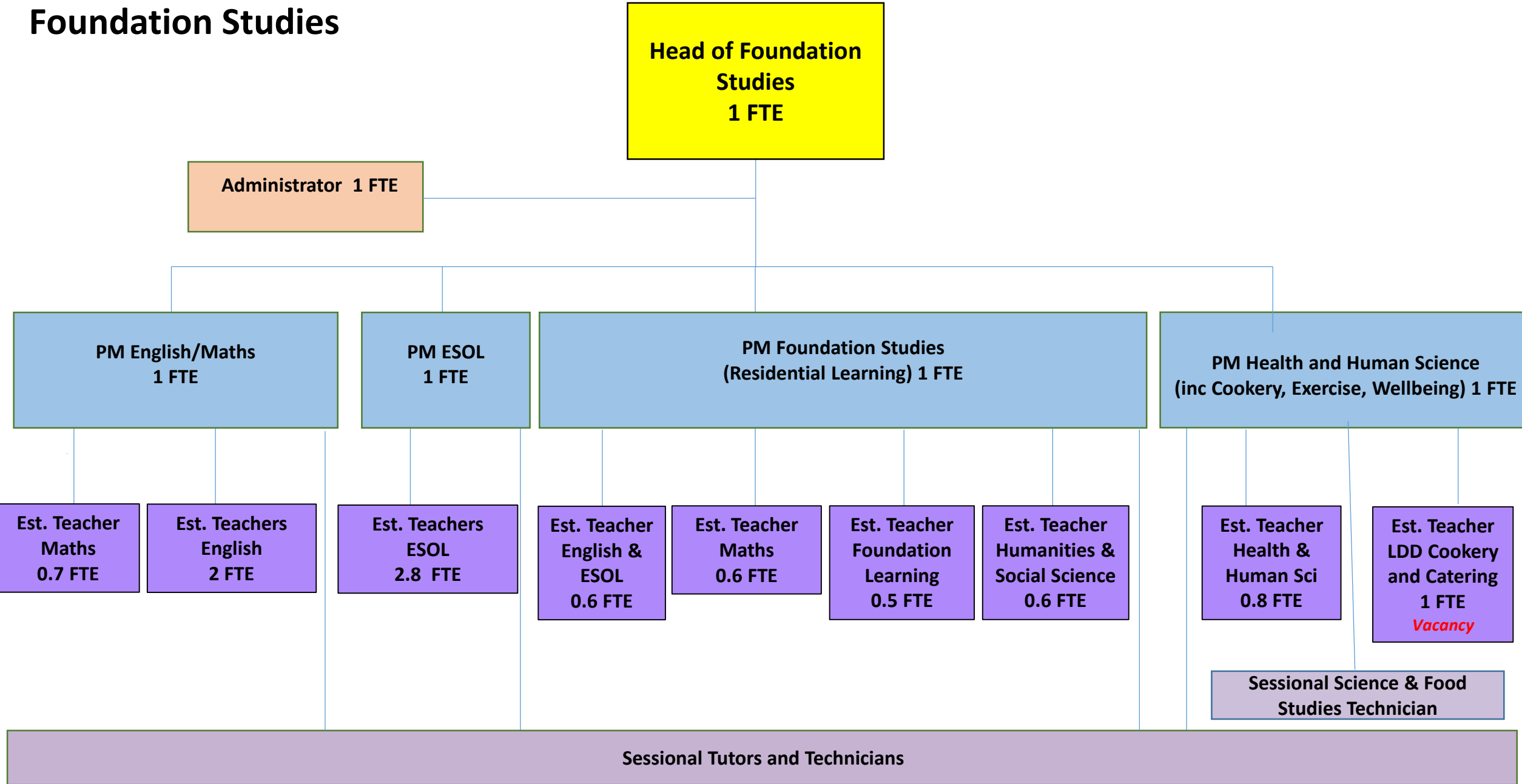
Gardener / Grounds Person

Caretakers

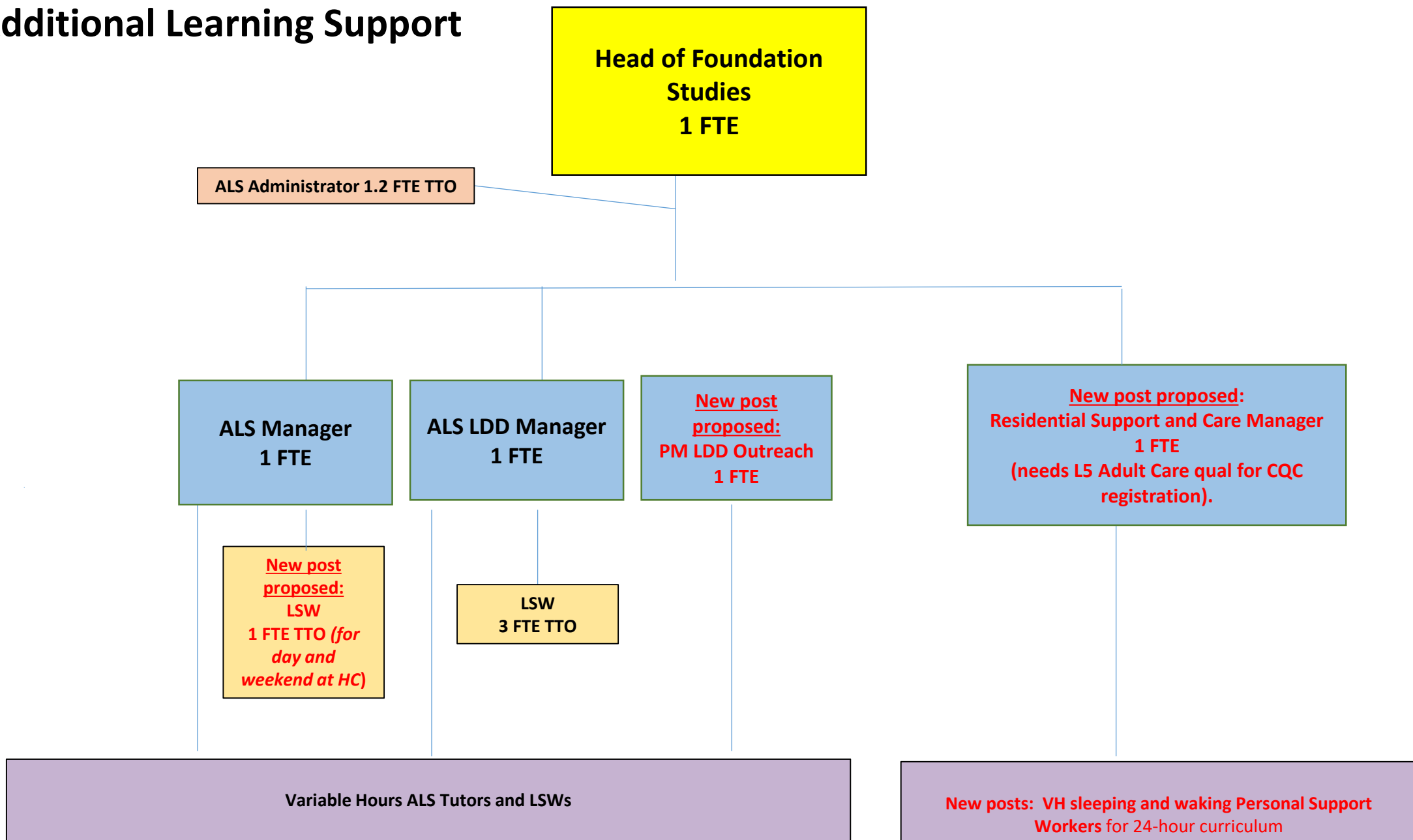
**Vice Principal -
Teaching & Learning**



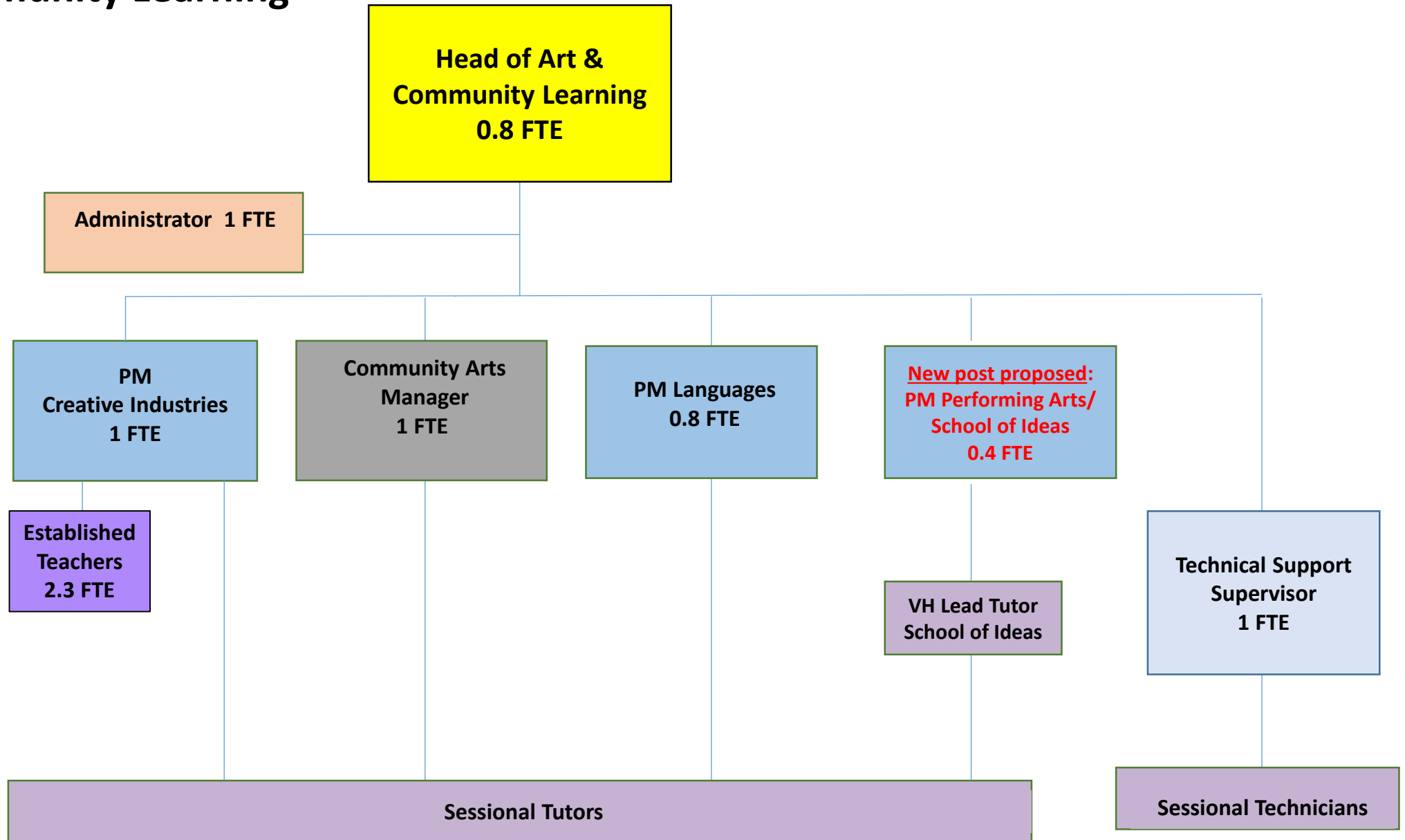
Foundation Studies



Additional Learning Support



Art and Community Learning



Vocational & Professional Studies

