

Part 7 – Composition of the Council and Management Structure

1. The Council has 51 Members representing 17 Wards.

2. Scheme of Elections

Elections are held by thirds.

- In May 2002, the 17 Councillors with the smallest number of votes in each Ward (from the 2001 elections) retired. New Councillors were elected for 4 Years.
- In 2003, the Councillors with the next smallest number of votes in each Ward (from the 2001 elections) retired. New Councillors were elected for 4 Years.
- In 2004, the remaining 17 Councillors (from the 2001 elections) retired. New Councillors were elected for 4 years.
- 2005 was a fallow year.
- In 2006, the 17 Councillors elected in 2002 retired.
- In 2007, the 17 Councillors elected in 2003 retired.
- In 2008, the 17 Councillors elected in 2004 retired.
- 2009 was a fallow year.
- In 2010, the 17 Councillors elected in 2006 retired.
- In 2011, the 17 Councillors elected in 2007 retired.

3. The current Members of the Council, the Wards they represent, their Terms of Office and the Committees they sit on are as follows:

<u>EAST WARDS</u>	<u>Retiring Date</u>
<u>Kursaal</u>	
Blaine Robin	2012
Louise Burdett	2014
Judith McMahon	2015
<u>Milton</u>	
Nigel Folkard	2012
Maria Caunce	2014
Jonathan Garston	2015
<u>Shoeburyness</u>	
Mike Assenheim	2012
Roger Hadley	2014
Anne Chalk	2015
<u>Southchurch</u>	
Tony Delaney	2012
Brian Kelly	2014
Ann Holland	2015
<u>St Lukes</u>	
Peter Ashley	2012
Sally Carr	2014
Paul Van Looy	2015
<u>Thorpe</u>	
Mike Stafford	2012
Alex Kaye	2014
Ron Woodley	2015
<u>Victoria</u>	
Ian Gilbert	2012
Margaret Borton	2014
David Norman	2015
<u>West Shoebury</u>	
Elizabeth Day	2012
Tony Cox	2014
Derek Jarvis	2015

<u>WEST WARDS</u>	<u>Retiring Date</u>
<u>Belfairs</u>	
Stephen Aylen	2012
Fay Evans	2014
Lesley Salter	2015
<u>Blenheim Park</u>	
Graham Longley	2012
Duncan Russell	2014
Ian Courtenay	2015
<u>Chalkwell</u>	
Ian Robertson	2012
Richard Brown	2014
Stephen Habermel	2015
<u>Eastwood Park</u>	
Christopher Walker	2012
Andrew Moring	2014
Trevor Byford	2015
<u>Leigh</u>	
Alan Crystall	2012
Barry Godwin	2014
Peter Wexham	2015
<u>Prittlewell</u>	
Mary Betson	2012
Mike Grimwade	2014
Ric Morgan	2015
<u>St Laurence</u>	
Mark Flewitt	2012
Ted Lewin	2014
Adam Jones	2015
<u>West Leigh</u>	
John Lamb	2012
Nigel Holdcroft	2014
Gwen Horrigan	2015
<u>Westborough</u>	
Marimuthu Velmurugan	2012
Paul Collins	2014
Martin Terry	2015

Executive Councillors in the Cabinet

Portfolio	Portfolio Holder	Substitute (S.O.31.7)
Leader	T N Holdcroft	J L Lamb
Deputy Leader with special responsibility for Regeneration	J L Lamb	N J Holdcroft
Corporate Support Services	A J Moring	N J Holdcroft
Culture & Tourism	D J Jarvis	T Cox
Public Protection, Waste & Transport	T Cox	J L Lamb
Planning	J M Garston	A J Moring
Adult Social Care, Health & Housing	L Salter	M A Flewitt
Children & Learning	M A Flewitt	D J Jarvis

Committee of the Cabinet (3)

(To deal with Traffic Orders)

Party	Members	Substitutes
CON	T Cox (Chairman) J L Lamb (Vice-Chairman) J M Garston	M A Flewitt T N Holdcroft A J Moring

Committees

Economic & Environmental Scrutiny Committee (17)

(Neither the Mayor nor an Executive Councillor shall be a Member)

Party	CON	LD	IND	LAB
Members	P W Ashley (Chairman) L Burdett (Vice-Chairman) T K Byford S J Carr J I Courtenay M F Evans S J Habermel G M Horrigan MBE B T Kelly I T Robertson	G E Longley G Lewin P A Wexham	M Stafford M W Terry R A Woodley	J McMahon

Community Services & Culture Scrutiny Committee (17+3)

(Neither the Mayor nor an Executive Councillor shall be a Member)

Party	CON	LD	IND	LAB	Co-opted Members
Members	A E Holland (Chairman) B Robin (Vice-Chairman) S T Aylen R A H Brown M T Caunce R E Hadley G M Horrigan MBE A J Jones C W Walker	M A Betson A Crystall R N Morgan	A Chalk A Kaye M Velmurugan	M L Borton I D Gilbert	E Camp A Semmence P Stroudley

Children & Lifelong Learning Scrutiny Committee (17+7)

(Neither the Mayor nor an Executive Councillor shall be a Member)

Party	CON	LD	IND	LAB	Co-opted Members
Members	E A Day (Chairman) N Folkard (Vice-Chairman) T K Byford S J Carr M T Caunce J I Courtenay A J Jones B Robin C W Walker	P Collins B A Godwin M R Grimwade D F Russell	M Assenheim A Chalk A J Delaney	I Gilbert	<u>Voting</u> L Barnard V Copeland J Joshi M Rickett <u>Non-voting</u> I Grubb S Roberts A Clarke

Appeals Committee (A) (7)

(Neither the Mayor nor an Executive Councillor shall be a Member)

Party	CON	LD	IND	LAB
Members	R E Hadley (Chairman) G M Horrigan MBE (Vice-Chairman) E A Day I T Robertson	M R Grimwade	M Assenheim	M L Borton

Appeals Committee (B) (7)

(Neither the Mayor nor an Executive Councillor shall be a Member)

Party	CON	LD	IND	LAB
Members	S J Habermel (Chairman) R A H Brown (Vice-Chairman) P W Ashley N J Folkard	B A Godwin	M Stafford	J McMahon

The Appointments and Disciplinary Committee (7)

Party	CON	LD	IND	LAB
Members	T N Holdcroft (Chairman) J L Lamb (Vice-Chairman) D J Jarvis Relevant Executive Councillor * (*replace with R E Hadley when agenda includes appointments of, or disciplinary action against, the Head of Paid Service, Corporate Director of Head of Service)	G E Longley	R A Woodley	I D Gilbert

Development Control Committee (17)

Party	CON	LD	IND	LAB
Members	B T Kelly (Chairman) S J Habermel (Vice-Chairman) P W Ashley R A H Brown E A Day M F Evans N J Folkard R E Hadley G M Horrigan MBE	A Crystall M R Grimwade G Lewin D F Russell	M Assenheim A J Delaney M Velmurugan	M L Borton

General Purposes Committee (9)

Party	CON	LD	IND	LAB
Members	C W Walker (Chairman) S J Carr (Vice-Chairman) J I Courtenay B T Kelly B Robin	M A Betson A Crystall	M Assenheim M W Terry	-

Licensing Committee (15)

Party	CON	LD	IND	LAB
Members	M F Evans (Chairman) R E Hadley (Vice-Chairman) P W Ashley R A H Brown E A Day N J Folkard S J Habermel A E Holland	B A Godwin G Lewin D F Russell	M Assenheim A Kaye R A Woodley	J McMahon

Licensing Sub-Committees A and B

To be drawn from the Licensing Committee as required.

Licensing Sub-Committee C (9)

Party	CON	LD	IND	LAB
Members	M F Evans (Chairman) R E Hadley (Vice-Chairman) R A H Brown N J Folkard S J Habermel	B A Godwin M R Grimwade	A J Delaney	M L Borton

Audit Committee (9+1)

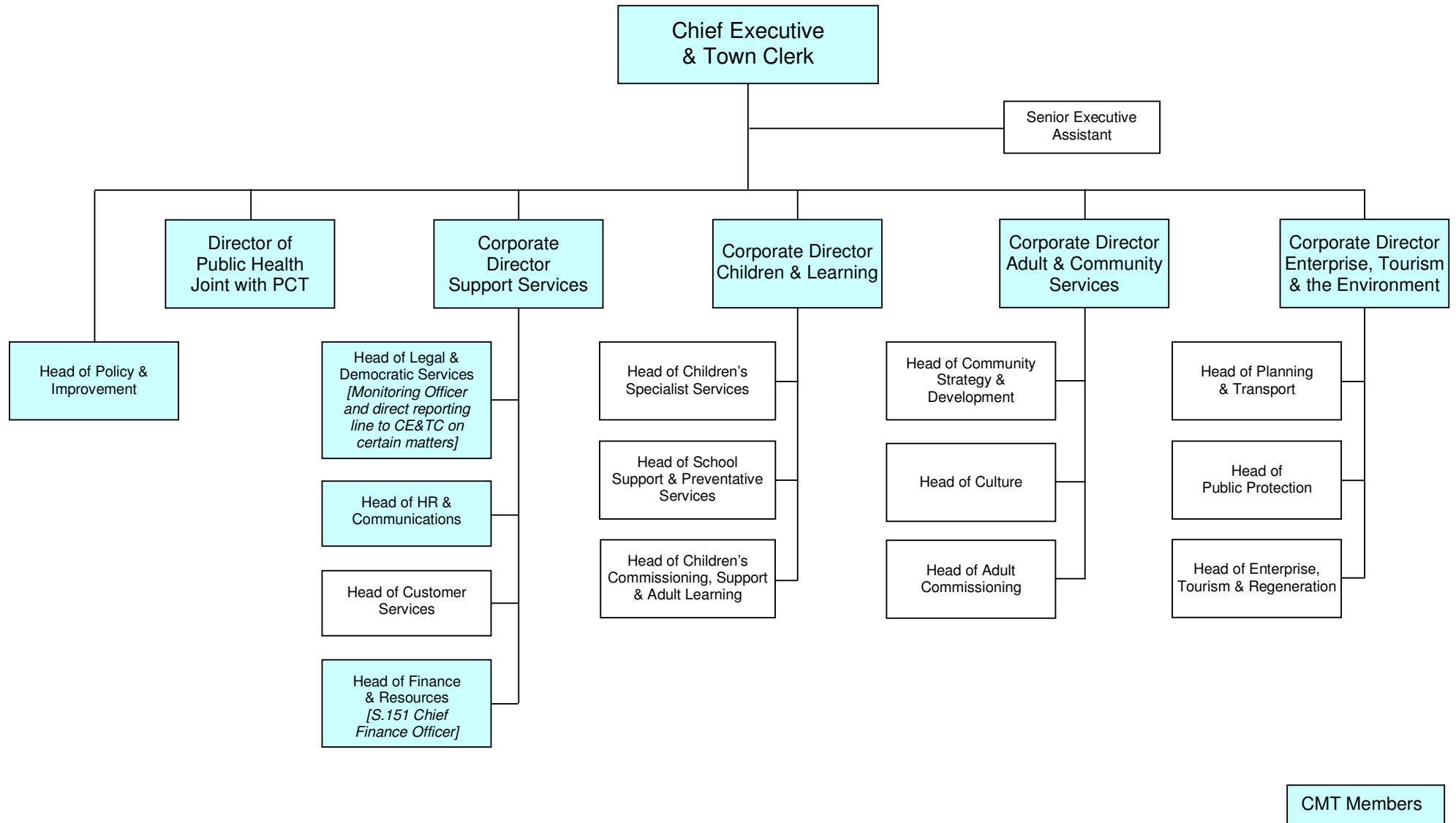
Party	CON	LD	IND	LAB
Members	I T Robertson (Chairman) C W Walker (Vice-Chairman) R E Hadley B T Kelly J L Lamb	Mrs M A Betson P Collins	R A Woodley	J McMahon

Standards Committee (7+5)

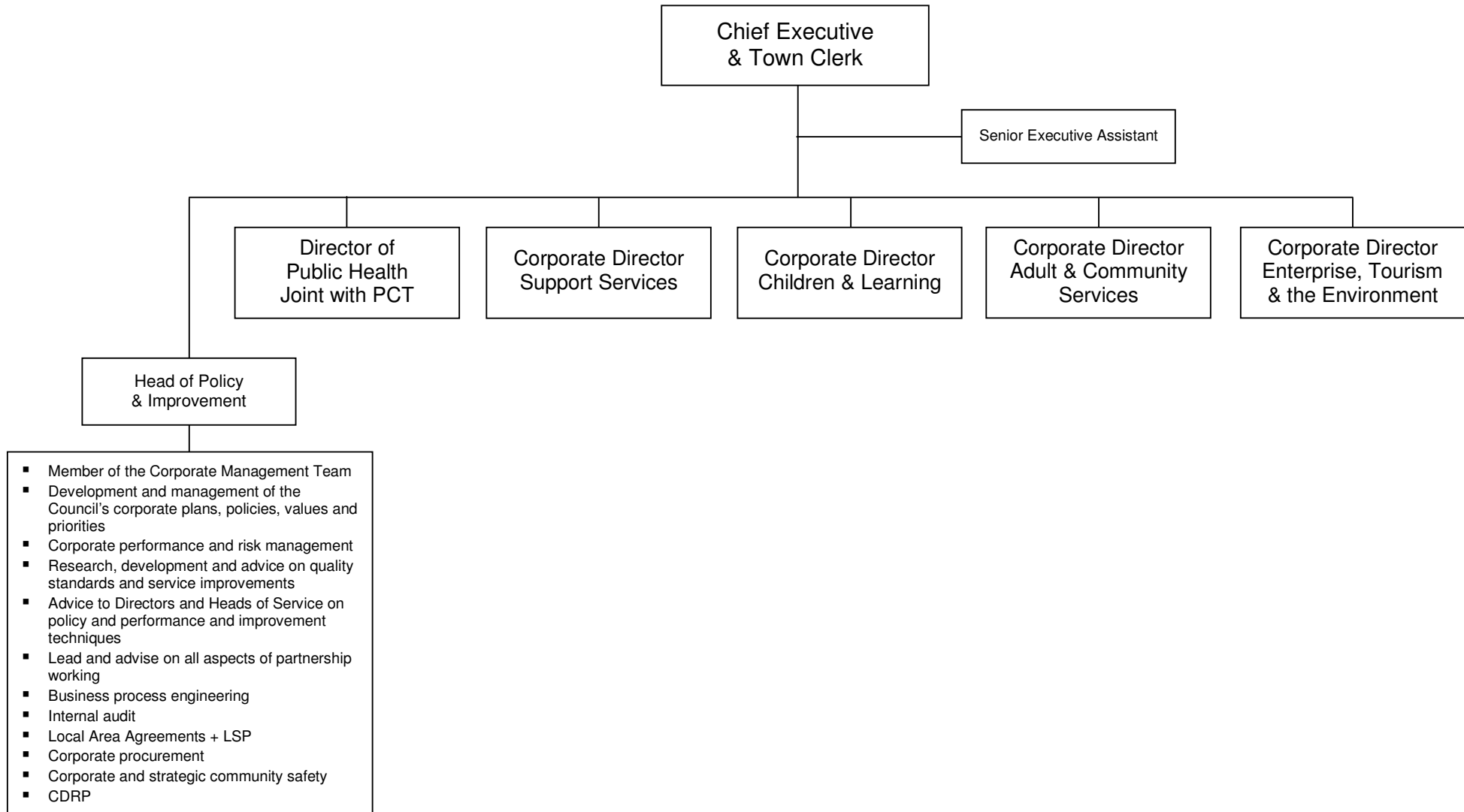
Note: Neither the Mayor nor Leader can be a Member and not more than 1 Executive Councillor
By convention proportionality shall apply.

Party	CON	LD	IND	LAB	Other Members
Members	S J Carr (Vice-Chairman) R A H Brown M F Evans G M Horrigan MBE	G E Longley	M W Terry	I D Gilbert	Leigh-on-Sea Town Council nominees: Cllr P Dolby Cllr J Rowswell 3 Independent members: Mrs J Tetley (Chairman) Mrs J Morgan Rev. R Williams

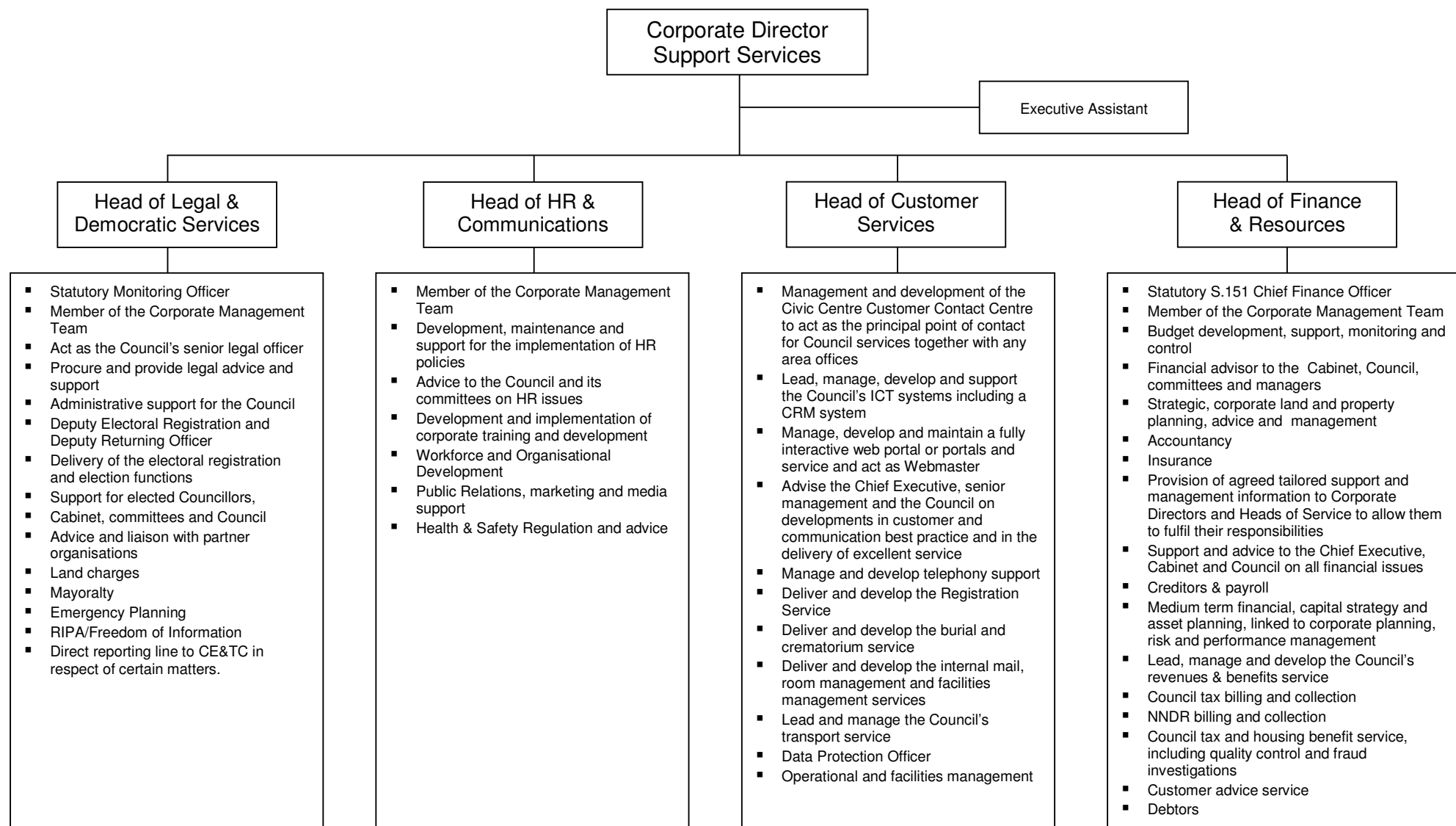
1. Structure – Corporate Directors & Heads of Service



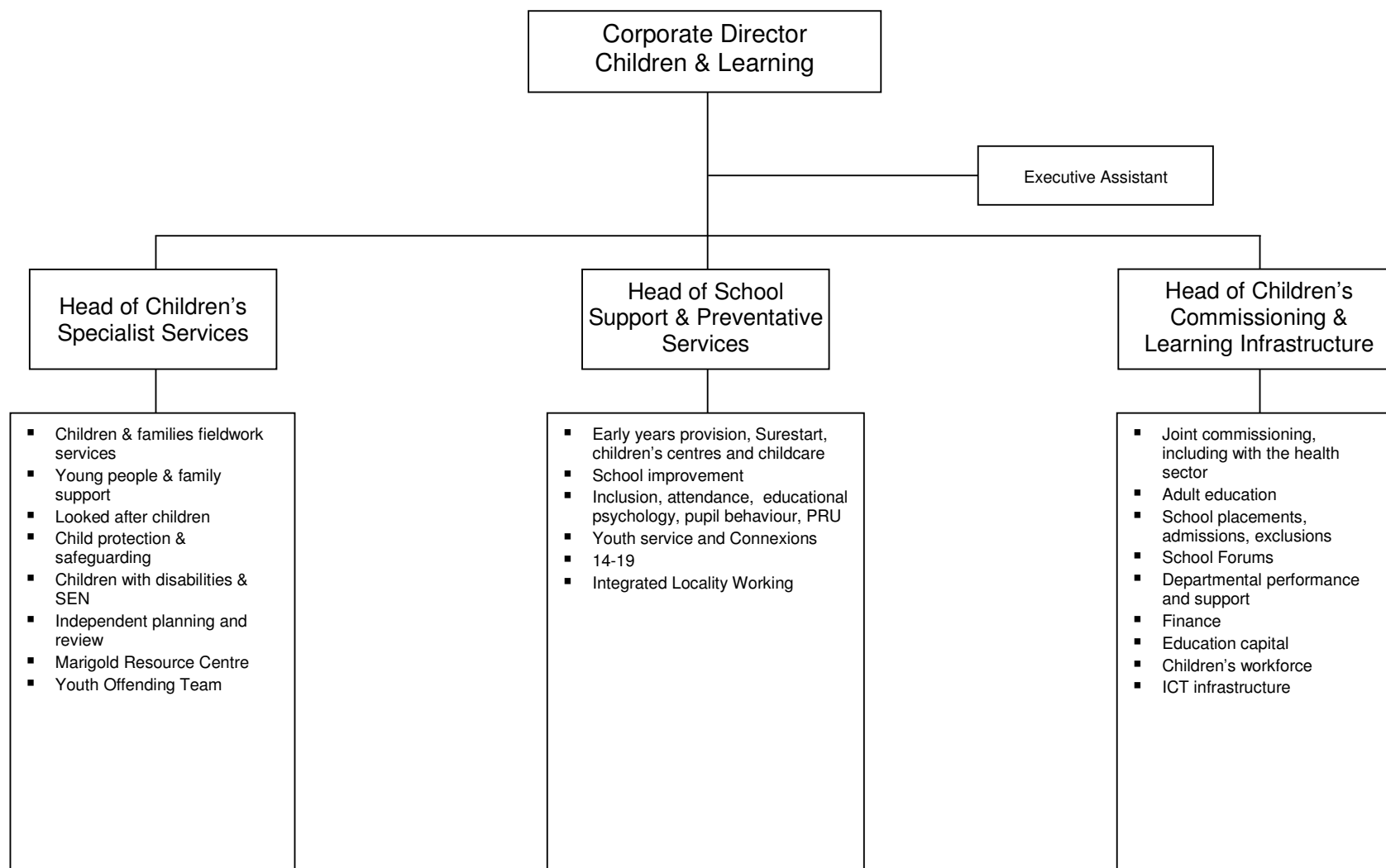
2. Structure – CETC and functions of Head of Policy & Improvement



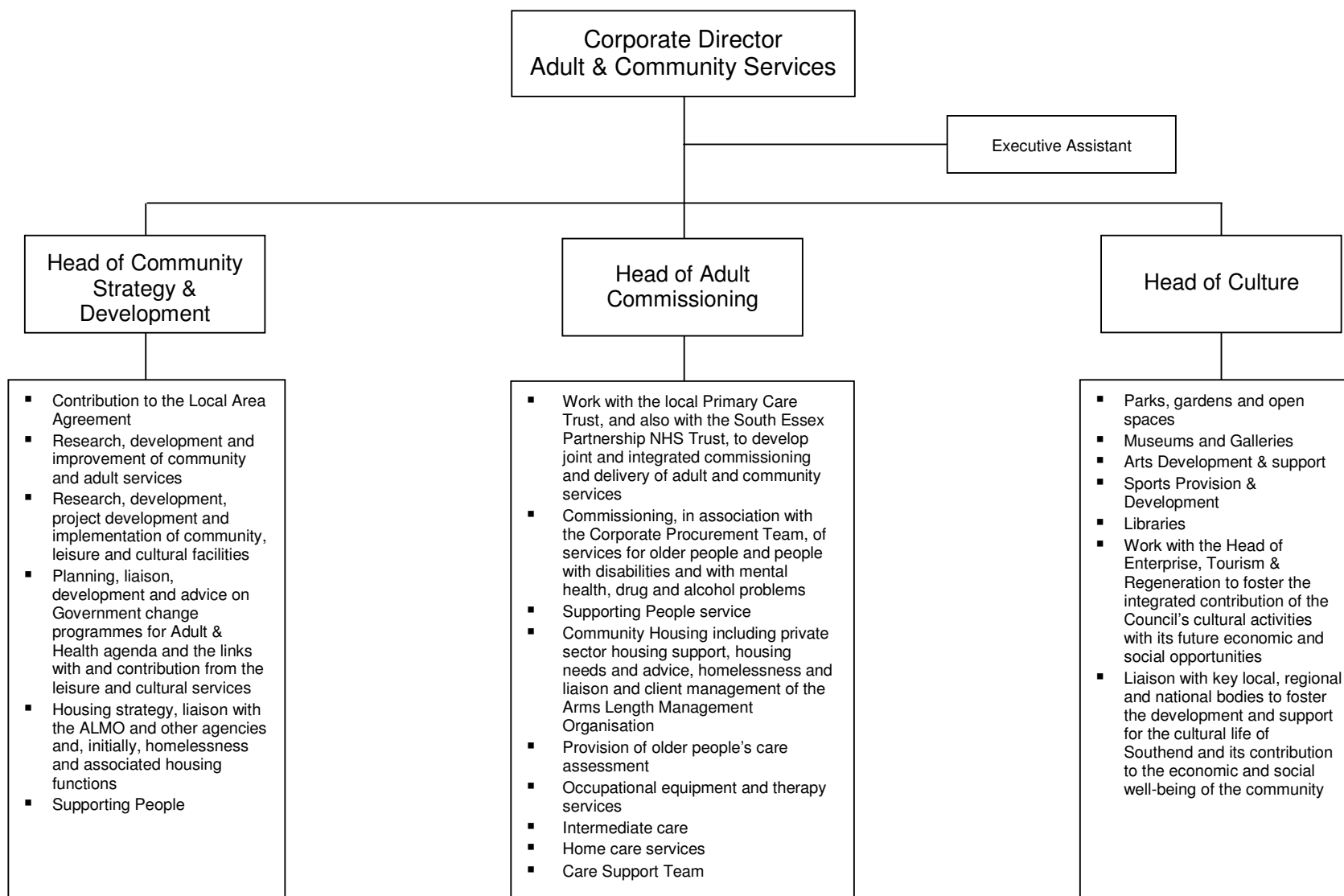
3. Structure – Support Services – Functions of Heads of Service



4. Structure – Children & Learning – Functions of Heads of Service



5. Structure – Adults & Community Services – Functions of Heads of Service



6. Structure – Enterprise, Tourism & the Environment – Functions of Heads of Service

