

Northern Forest Appeal to Landowners in North Lincolnshire



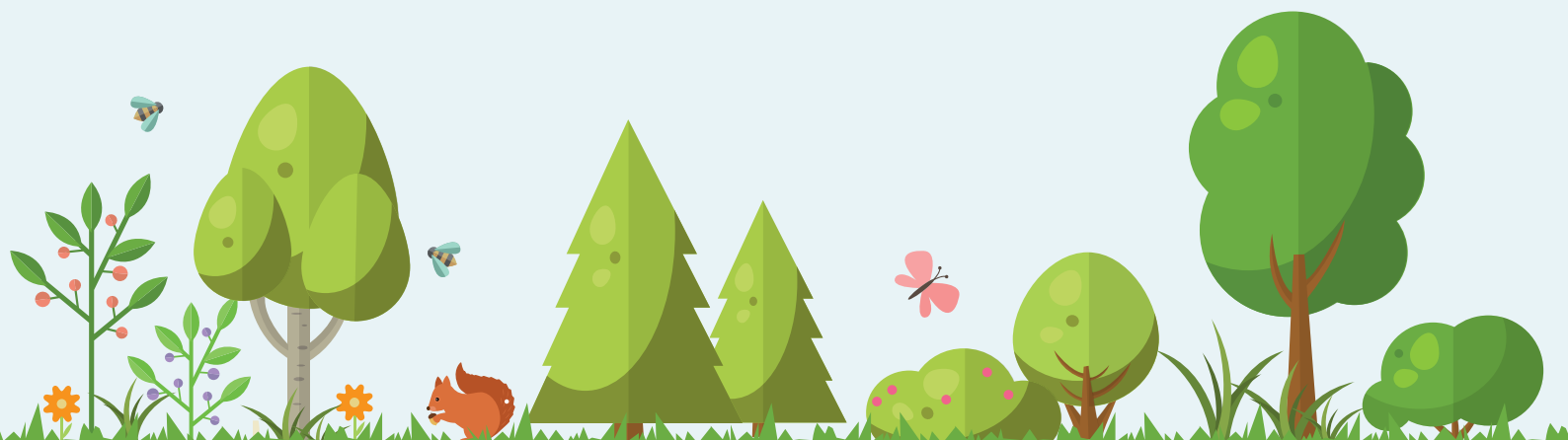
**North
Lincolnshire
Council**
www.northlincs.gov.uk

We would like to invite you to express an interest in tree planting as a contribution to the Northern Forest. This is a 25-year vision to plant 50 million trees across the North of England, stretching from Liverpool to Hull, as set out in the 25-year Environment Plan. It is a partnership involving the community forests in the north – The Mersey Forest, City of Trees, White Rose Forest, and HEYwoods working with the Woodland Trust. North Lincolnshire Council has been planting thousands of trees on Council-owned land. We are also encouraging landowners and Town and Parish Councils to come forward with proposals for areas of land that could be used to plant woodland or groups of trees. There are many tree planting grants available, offering generous support.

All proposed sites will be checked for:

- ✦ **Archaeology**
- ✦ **Wildlife interest that could be harmed by tree planting**
- ✦ **Landscape considerations**
- ✦ **Underground and overhead services**
- ✦ **Conflict with landfill sites**

Support is available to work up schemes and to organise volunteers for tree planting and aftercare.



How to Express an Interest

Expressions of interest should be sent to **Andrew.Taylor@northlincs.gov.uk**

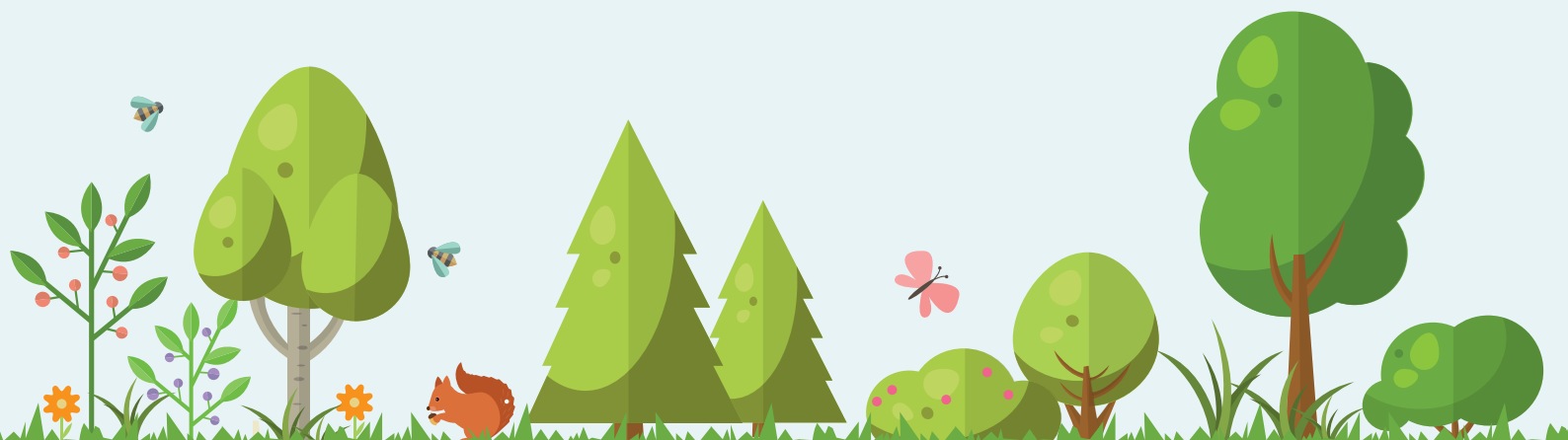
Please mark on a map or aerial photo the area in question OR send a link to the central point using this online tool **<https://gridreferencefinder.com/>**

Include in the email the answers to as many questions as possible from **Box1** below.

Box1

Useful Information (if known)

- 🍃 Area of site in hectares or acres.
- 🍃 Does the proposer have ownership or control over the site or would the planting require permission from a tenant or third party landowner?
- 🍃 Is the proposal to plant up the whole site, part(s) of the site or a few trees in corners around the edges?
- 🍃 Are any hedgerows proposed?
- 🍃 Are there any specific requirements in terms of size of tree (ultimate size and size at the time of planting) or species of tree, or are you happy to be guided?
- 🍃 Do you have any specific objectives e.g. landscape, wildlife, carbon storage, public enjoyment?
- 🍃 Are there any unusual or site-specific benefits to the scheme (e.g. connecting existing habitat, restoring historic features, memorial sites etc.)?
- 🍃 Are there any known issues or constraints to consider?



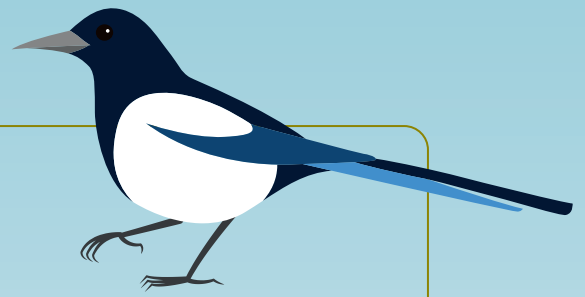
Next steps

- 🍃 The council will work with a variety of funding sources to best match the project. These include the Forestry Commission, HEYwoods Community Forest and the Woodland Trust.
- 🍃 We will usually need to visit the site.
- 🍃 We will need to gather further information, such as: evidence of public support, historic environment records, wildlife records, landscape guidelines, underground services maps, soils etc.
- 🍃 For larger schemes we may need to have the project publicised for consultation on the Forestry Commission Public Register and provide information to allow for assessment under the relevant Environmental Impact Assessment regulations.
- 🍃 Once approvals are looking likely, we will establish a place for the project on the funders' programmes and help the community to arrange planting and aftercare.

After planting

- 🍃 We will register your trees on the Council's Tree Planting Register, so that we can keep a count of the number of trees planted:
www.northlincs.gov.uk/planning-and-environment/trees-and-hedges/
- 🍃 We will provide ongoing support and advice on aftercare and tree and woodland management.





Dos and Don'ts of Tree Planting

Do...

- 🛠️ In the open countryside, plant primarily locally native species.
- 🛠️ In urban areas and designed landscapes, plant locally native species, but more ornamental species of high biodiversity value may also be included.
- 🛠️ In habitat creation schemes, use stock of local origin where possible.
- 🛠️ Include a proportion of species from more southerly zones, to allow for climate change adaptation. For further advice, see: www.northlincs.gov.uk/new-trees-and-woodland
- 🛠️ Seek to connect woodlands and hedgerows, to increase habitat connectivity at the landscape scale.
- 🛠️ Consider natural colonisation of woodland as an alternative to planting where there are appropriate seed sources and where browsing and grazing can be controlled.
- 🛠️ Plant a variety of species, varieties and genotypes to provide greater resistance to pests and diseases.
- 🛠️ Maintain biosecurity when purchasing stock (buy from a reputable supplier who won't spread pests and diseases).
- 🛠️ Ensure that suppliers are peat-free.
- 🛠️ Apply the UK Forestry Standard: www.gov.uk/government/publications/the-uk-forestry-standard
- 🛠️ Consider future management of the trees before planting.

Don't...

- 🚫 Plant where it would harm important habitats and species, archaeology, the historic environment, important landscapes, underground services, local people or neighbouring land uses.

