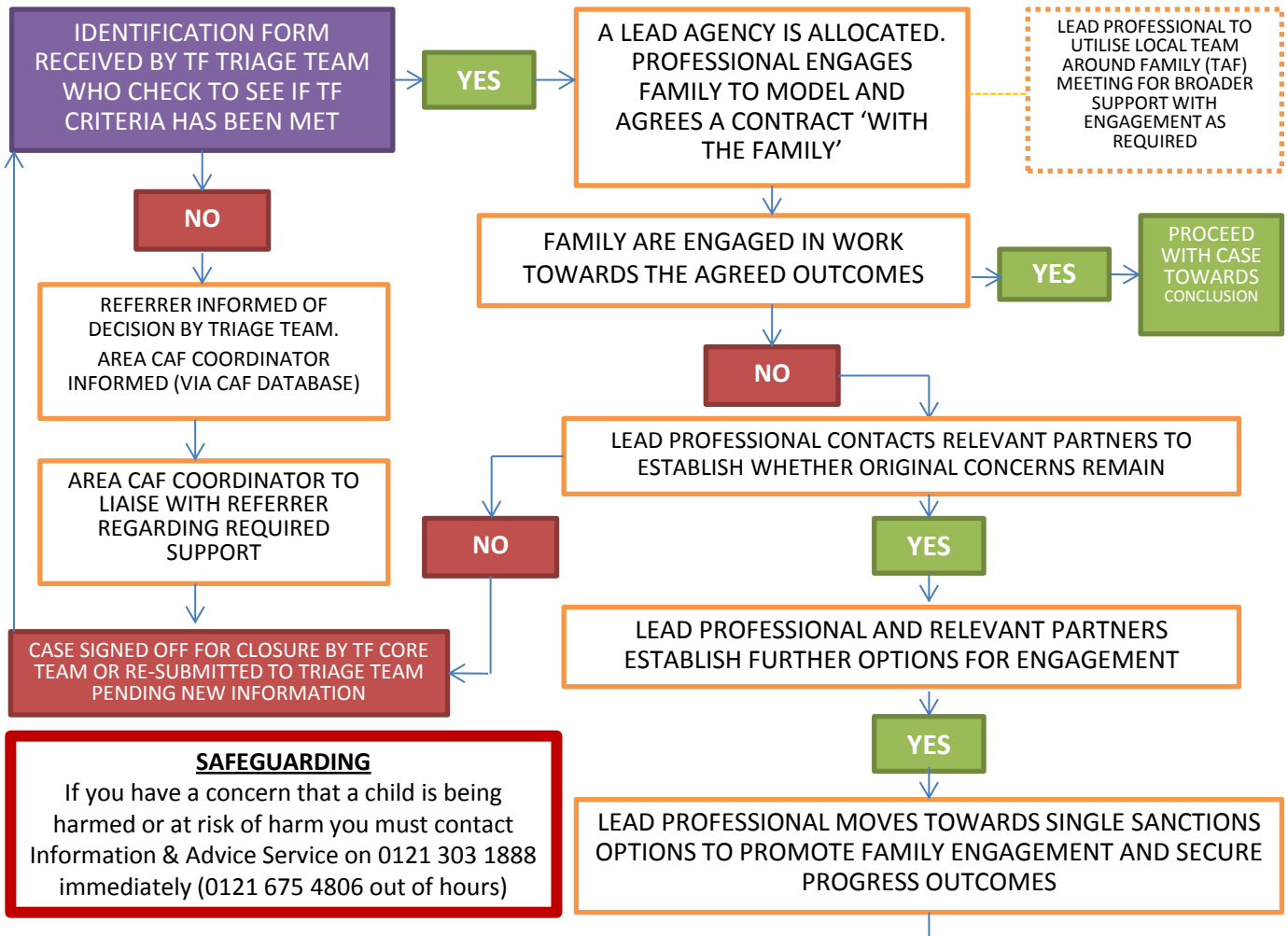


THINK FAMILY (TF) ENGAGEMENT & SANCTION PROCESS



SINGLE SANCTIONS OPTIONS	TARGET	SANCTION	RESPONSIBILITY
	IMPROVE SCHOOL ATTENDANCE	HOME VISIT/FINE/COURT	SCHOOL/ACADEMY/ EDUCATION WELFARE SERVICE
	REDUCE YOUTH CRIME	INTEGRATED OFFENDER MANAGEMENT (IOM)/BREACH PROCESS/PARENTING CONTRACT OR ORDER	YOUTH OFFENDING SERVICE (YOS)/POLICE
	REDUCE FAMILY ASB	CIVIL POWERS/HOUSING/ASB SANCTIONS	HOUSING / SAFER COMMUNITIES TEAM/POLICE
	REDUCE ADULT CRIMINALITY	INCREASED IOM, BREACH	PROBATION/POLICE
	IMPROVE ADULT/TRAINING EMPLOYMENT	BENEFIT SANCTIONS	DEPARTMENT FOR WORK & PENSIONS (DWP)

LEAD PROFESSIONAL TO REVIEW SUCCESS OF SANCTION & POTENTIAL TO ENGAGE FAMILY IN FURTHER SUPPORTIVE INTERVENTION TO ADDRESS ISSUES AS APPROPRIATE

THINK FAMILY (TF) ENGAGEMENT & SANCTION PROCESS

SINGLE SANCTIONS RESOLVES
ENGAGEMENT ISSUES

YES

PROCEED
WITH CASE
TOWARDS
CONCLUSION

NO

LEAD PROFESSIONAL INITIATES MULTI AGENCY
DISCUSSION BY REFERRING TO THE QUADRANT
SAFER COMMUNITIES GROUP (SCG)

LEAD PROFESSIONAL TO UTILISE
LOCAL TEAM AROUND FAMILY (TAF)
MEETING FOR BROADER SUPPORT
WITH ENGAGEMENT AS REQUIRED

A MULTI-AGENCY SANCTION PLAN DEVELOPED AND
SUCCESFULLY IMPLEMENTED

YES

PROCEED WITH
CASE
TOWARDS
CONCLUSION

NO

CRIME/ASB ELEMENT TO CASE

YES

TACKLING FAMILIES UNDERMINING
NEIGHBOURHOODS (TFUN) LITE
SCG AND LEAD PRACTITIONER PRESENT CASE TO
MULTI-AGENCY PANEL

TFUN LITE - DISRUPTION PLAN DEVELOPED AND
SUCCESSFULLY IMPLEMENTED

YES

PROCEED WITH
CASE
TOWARDS
CONCLUSION

NO

CASE SIGNED OFF FOR CLOSURE BY TF CORE TEAM IF
ALL AVENUES OF SUPPORT AND SANCTION ARE
EXHAUSTED

SAFEGUARDING

If you have a concern that a child is being
harmed or at risk of harm you must contact
Information & Advice Service on
0121 303 1888 immediately
(0121 675 4806 out of hours)

