

NOTES:

- LEGEND:
- Site boundary
 - Ownership boundary



PLANNING

Project Ref:	The Hold	Funding raised by The National Lottery and awarded by the Heritage Lottery Fund	LOTTERY FUNDED
Subject:	Proposed Location Plan	Rev:	C
Drwg No:	HLD_1250_A_00	Original sheet size:	A3
Scale:	1:1250		

Read this drawing in association with all other relevant contract documents and risk assessments.
Do not scale from this drawing. Use figured dimensions only. All dimensions to be checked and verified by the contractor on site.
© Pringle Richards Sharratt Ltd: Studio 2.01, Canterbury Court, London NW9 6DE. Company registered in England No. 3189548

0m 10m 25m 50m 75m

Work Package	Tender	Briefing	Construction

Date	Revision	Description



01. Suffolk red bricks laid in flemish bond using lime mortar to reduce movement joint
02. Special Lowestoft projecting buff brickwork band
03. PPC thermally broken metal felled timber windows
04. PPC thermally broken metal felled timber windows opening lights to ventilate lantern activated with actuators
05. Metal flashing to CLT roof
06. Special metal clad CLF canopy with exposed timber finish to soffit
07. Galvanised and painted metal base and head fixing with glu laminated column to support CLF canopy
08. Natural stone paving with open joints to allow drainage of water to below
09. Special metal and timber security slats to ventilating lights
10. Galvanised and painted MS support structure to suspend cafe terrace, sloped access and staircase above root protection zone
11. Roof aeration and protection zone
12. Low level LED brick lights
13. PPC metal automated sliding doors
14. PPC metal sliding doors to cafe
15. PPC metal copping
16. PPC metal flashing to form negative corner detail
17. PPC metal flashing to conceal sloping roof and concealed gutters behind
18. Bespoke preformed brick 450mm high window, opening head detail with brick soffit
19. Natural stone paving and setts to external public path

LEGEND:

- Suffolk red brickwork
Lowestoft buff brickwork
Timber slats
Timber finish
Metal
Glazing
Colored glazing

PLANNING

Project Ref: The Hold
Subject : Proposed Detailed Elevation of South Entrance
Drwg No : HLD_20_A_61
Scale : 1:20

Funding raised by The National Lottery
and awarded by the Heritage Lottery Fund
Rev : A
Original sheet size: A1

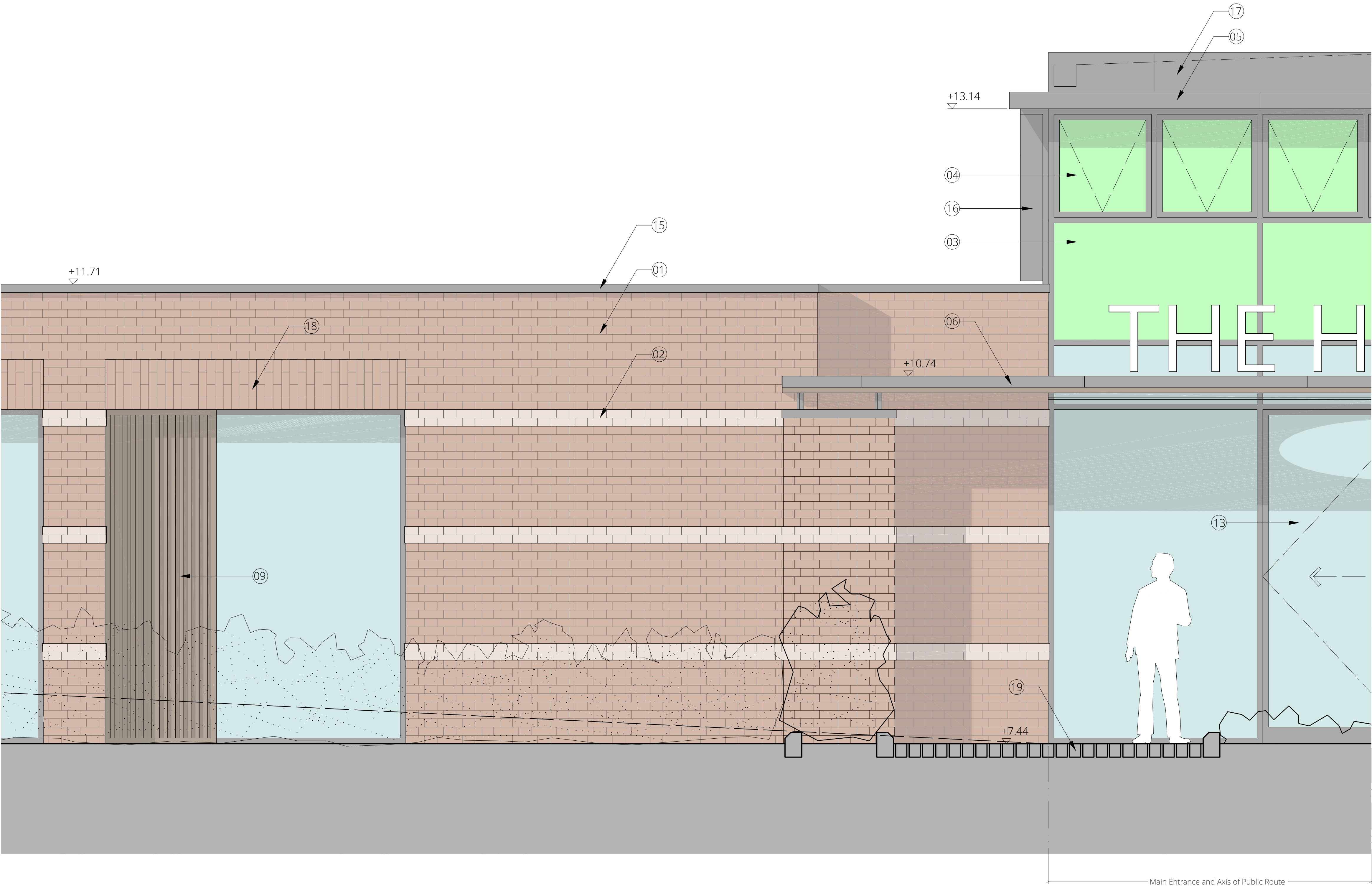
LOTTERY FUNDED

Read this drawing in association with all other relevant contract documents and risk assessments
Do not scale from this drawing. Use figured dimensions only. All dimensions to be checked and verified by the contractor on site.
© Pringle Richards Sharratt Ltd: Studio 2.01, Canterbury Court, London, SW9 6DE: Company registered in England No. 3189549

Scale bar for verification only

Work Package Tender Briefing Construction

Date 26.09.17
Revision A
Description Planning Issue



NOTES:

- 01. Suffolk red bricks laid in flemish bond using lime mortar to reduce movement join
- 02. Special Lowestoft projecting buff brickwork band
- 03. PPC thermally broken metal felled timber windows
- 04. PPC thermally broken metal felled timber windows opening lights to ventilate lantern activated with actuators
- 05. Metal flashing to CLT roof
- 06. Special metal clad CLF canopy with exposed timber finish to soffit
- 07. Galvanised and painted metal base and head fixing with glu laminated column to support CLF canopy
- 08. Natural stone paving with open joints to allow drainage of water to below
- 09. Special metal and timber security slats to ventilating lights
- 10. Galvanised and painted MS support structure to suspend cafe terrace, sloped access and staircase above root protection zone
- 11. Roof aeration and protection zone
- 12. Low level LED brick lights
- 13. PPC metal automated slidind doors
- 14. PPC metal sliding doors to cafe
- 15. PPC metal copping
- 16. PPC metal flashing to form negative corner detail
- 17. PPC metal flashing to conceal sloping roof and concealed gutters behind
- 18. Bespoke preformed brick 450mm high window, opening head detail with brick soffit
- 19. Natural stone paving and setts to external public path

LEGEND:

	Suffolk red brickwork		Metal
	Lowestoft buff brickwork		Glazing
	Timber slats		Colored glazing
	Timber finish		

PLANNING

Project Ref:	The Hold	Funding raised by The National Lottery and awarded by the Heritage Lottery Fund LOTTERY FUNDED	
Subject :	Proposed Detailed Elevation of North Entrance		
Drwg No :	HLD_20_A_62		
Scale :	1:20		
Rev :	A	Original sheet size:	A1

Read this drawing in association with all other relevant contract documents and risk assessments
Do not scale from this drawing. Use figured dimensions only. All dimensions to be checked and verified by the contractor on site.
© Pringle Richards Sharratt Ltd: Studio 2.01, Canterbury Court, London, SW9 6DE: Company registered in England No. 3189549

Scale bar for verification only

Work Package	Tender	Briefing	Construction
--------------	--------	----------	--------------

Date	Revision	Description
26.09.17	A	Planning issue



NOTES:

- 01. New steps from Fore Street to entrance cafe terrace - formed from light weight structure above grade
- 02. Low level feature wall between main circulation slope and steps including displays, locking and resting points
- 03. Special display cabinet for changing strongroom exhibitions and information
- 04. Rotating shop display cabinets to secure shop when not in use
- 05. Cafe kitchen servery
- 06. Public accessible seating and tables adjacent to and visible from the main search room
- 07. Main south entrance and cafe terrace canopy
- 08. Main north entrance canopy and exhibition seating area
- 09. "Wonder wall" to lecture hall and seminar rooms used to display and interpret larger strongroom objects
- 10. Main strongroom service bay entrance to be secured with painted MS gates and fencing at night
- 11. Dedicated DDA compliant parking for the strongroom
- 12. Secure strongroom private garden and rear access
- 13. Paved UoS carpark pedestrian route
- 14. Secure, ventilated and concealed bin store
- 15. Roof access points
- 16. Disabled level access route to main south entrance
- 17. Photovoltaic panels

LEGEND:

Main entrances

Levels

Site boundary

Existing and proposed trees

Existing trees

Structure above

External public routes

Shared space

Internal public circulation

Natural stone paving

Entrance matting

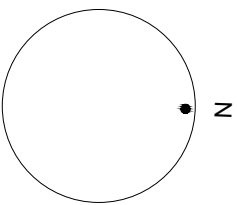
Asphalt black

Landscape areas

Concrete paving

Decking

Metal deck



PLANNING

Project Ref: The Hold

Subject : Proposed Ground Floor Plan

Drwg No : HLD_250_A_01

Scale : 1:250

Funding raised by
The National Lottery
and awarded by the Heritage Lottery Fund

Rev : A

Original sheet size: A1

Read this drawing in association with all other relevant contract documents and risk assessments

Do not scale from this drawing. Use figured dimensions only. All dimensions to be checked and verified by the contractor on site.

© Pringle Richards Sharratt Ltd: Studio 2.01, Canterbury Court, London, SW9 6DE: Company registered in England No. 3189549

0m

2m

5m

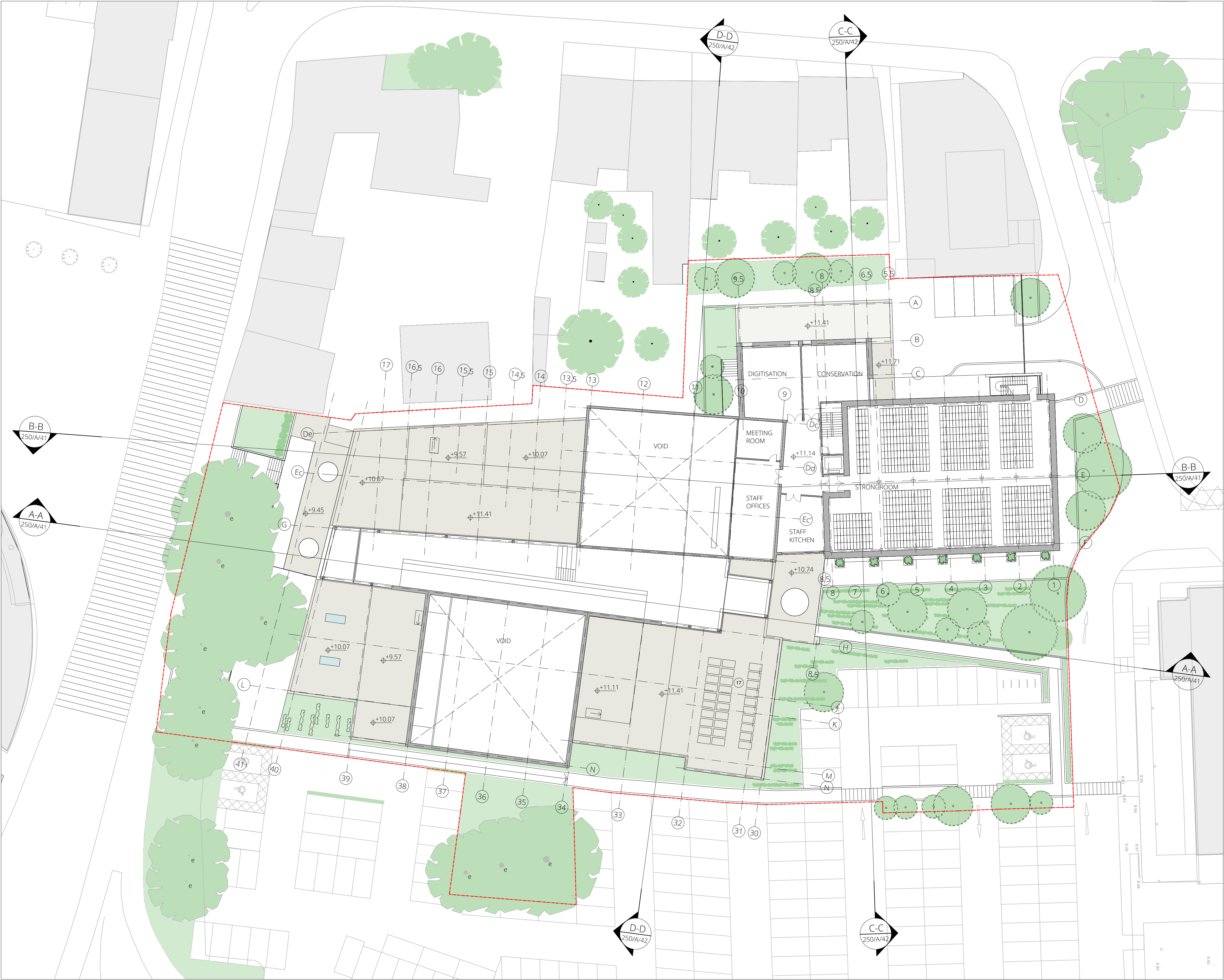
10m

25m

Scale bar for verification only

Work Package	Tender	Briefing	Construction

Date	Revision	Description
26.09.17	A	Planning issue



NOTES:

01. New steps from Fore Street to entrance cafe terrace - formed from light weight structure above grade
02. Low level feature wall between main circulation slope and steps including displays, locking and resting points
03. Special display cabinet for changing strongroom exhibitions and information
04. Rotating shop display cabinets to secure shop when not in use
05. Cafe kitchen servery
06. Public accessible seating and tables adjacent to and visible from the main search room
07. Main south entrance and cafe terrace canopy
08. Main north entrance canopy and exhibition seating area
09. "Wonder wall" to lecture hall and seminar rooms used to display and interpret larger strongroom objects
10. Main strongroom service bay entrance to be secured with painted MS gates and fencing at night
11. Dedicated DDA compliant parking for the strongroom
12. Secure strongroom private garden and rear access
13. Paved UoS carpark pedestrian route
14. Secure, ventilated and concealed bin store
15. Roof access points
16. Disabled level access route to main south entrance
17. Photovoltaic panels

LEGEND:

	Main entrances		Natural stone paving		Membrane roofing
	Levels		Entrance matting		Metal roofing
	Site boundary		Asphalt black		Louvers
	Existing and proposed trees		Landscape areas		Roof lights
	Existing trees		Concrete paving		Coping stone
	Structure above		Decking		Roof mounted PV cells
	External public routes		Metal deck		
	Shared space				
	Internal public circulation				

PLANNING

Project Ref:	The Hold	Funding raised by	
Subject:	Proposed Upper Floor Plan	The National Lottery	
Drwg No:	HLD_250_A_02	and awarded by the Heritage Lottery Fund	LOTTERY FUNDED
Scale:	1:250	Rev:	A
		Original sheet size:	A1

Read this drawing in association with all other relevant contract documents and risk assessments

Do not scale from this drawing. Use figured dimensions only. All dimensions to be checked and verified by the contractor on site.

© Pringle Richards Sharratt Ltd: Studio 2.01, Canterbury Court, London, SW9 6DE: Company registered in England No. 3189549

0m 2m 5m 10m 25m

Scale bar for verification only

Work Package	Tender	Briefing	Construction

Date	Revision	Description
26.09.17	A	Planning issue



NOTES:

01. New steps from Fore Street to entrance cafe terrace - formed from light weight structure above grade
02. Low level feature wall between main circulation slope and steps including displays, locking and resting points
03. Special display cabinet for changing strongroom exhibitions and information
04. Rotating shop display cabinets to secure shop when not in use
05. Cafe kitchen servery
06. Public accessible seating and tables adjacent to and visible from the main search room
07. Main south entrance and cafe terrace canopy
08. Main north entrance canopy and exhibition seating area
09. "Wonder wall" to lecture hall and seminar rooms used to display and interpret larger strongroom objects
10. Main strongroom service bay entrance to be secured with painted MS gates and fencing at night
11. Dedicated DDA compliant parking for the strongroom
12. Secure strongroom private garden and rear access
13. Paved UoS carpark pedestrian route
14. Secure, ventilated and concealed bin store
15. Roof access points
16. Disabled level access route to main south entrance
17. Photovoltaic panels

LEGEND:

	Main entrances		Natural stone paving		Membrane roofing
	Levels		Entrance matting		Metal roofing
	Site boundary		Asphalt black		Louvers
	Existing and proposed trees		Landscape areas		Roof lights
	Existing trees		Concrete paving		Coping stone
	Structure above		Decking		Roof mounted PV cells
	External public routes		Metal deck		
	Shared space				
	Internal public circulation				

PLANNING

Project Ref:	The Hold	Funding raised by	
Subject:	Proposed Loft Floor Plan	The National Lottery	
Drwg No:	HLD_250_A_03	and awarded by the Heritage Lottery Fund	LOTTERY FUNDED
Scale:	1:250	Rev:	A
		Original sheet size:	A1

Read this drawing in association with all other relevant contract documents and risk assessments

Do not scale from this drawing. Use figured dimensions only. All dimensions to be checked and verified by the contractor on site.

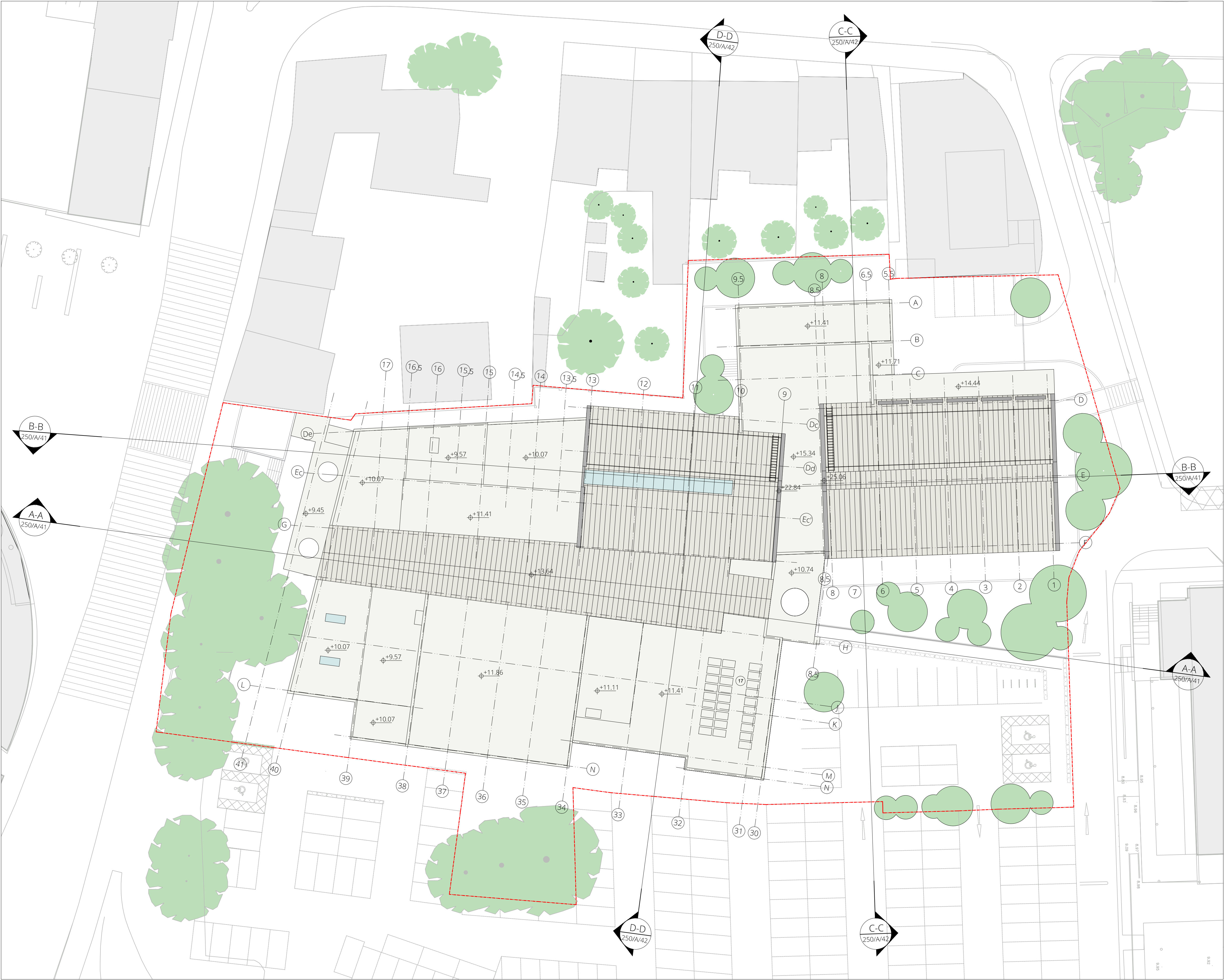
© Pringle Richards Sharratt Ltd: Studio 2.01, Canterbury Court, London, SW9 6DE: Company registered in England No. 3189549

0m 2m 5m 10m 25m

Scale bar for verification only

Work Package	Tender	Briefing	Construction

Date	Revision	Description
26.09.17	A	Planning issue



NOTES:

01. New steps from Fore Street to entrance cafe terrace - formed from light weight structure above grade
02. Low level feature wall between main circulation slope and steps including displays, locking and resting points
03. Special display cabinet for changing strongroom exhibitions and information
04. Rotating shop display cabinets to secure shop when not in use
05. Cafe kitchen servery
06. Public accessible seating and tables adjacent to and visible from the main search room
07. Main south entrance and cafe terrace canopy
08. Main north entrance canopy and exhibition seating area
09. "Wonder wall" to lecture hall and seminar rooms used to display and interpret larger strongroom objects
10. Main strongroom service bay entrance to be secured with painted MS gates and fencing at night
11. Dedicated DDA compliant parking for the strongroom
12. Secure strongroom private garden and rear access
13. Paved UoS carpark pedestrian route
14. Secure, ventilated and concealed bin store
15. Roof access points
16. Disabled level access route to main south entrance
17. Photovoltaic panels

LEGEND:

	Main entrances		Natural stone paving		Membrane roofing
	Levels		Entrance matting		Metal roofing
	Site boundary		Asphalt black		Louvers
	Existing and proposed trees		Landscape areas		Roof lights
	Existing trees		Concrete paving		Coping stone
	Structure above		Decking		Roof mounted PV cells
	External public routes		Metal deck		
	Shared space				
	Internal public circulation				

PLANNING

Project Ref:	The Hold	Funding raised by	
Subject:	Proposed Roof Plan	The National Lottery	
Drwg No:	HLD_250_A_04	and awarded by the Heritage Lottery Fund	LOTTERY FUNDED
Scale:	1:250	Rev:	A
		Original sheet size:	A1

Read this drawing in association with all other relevant contract documents and risk assessments

Do not scale from this drawing. Use figured dimensions only. All dimensions to be checked and verified by the contractor on site.

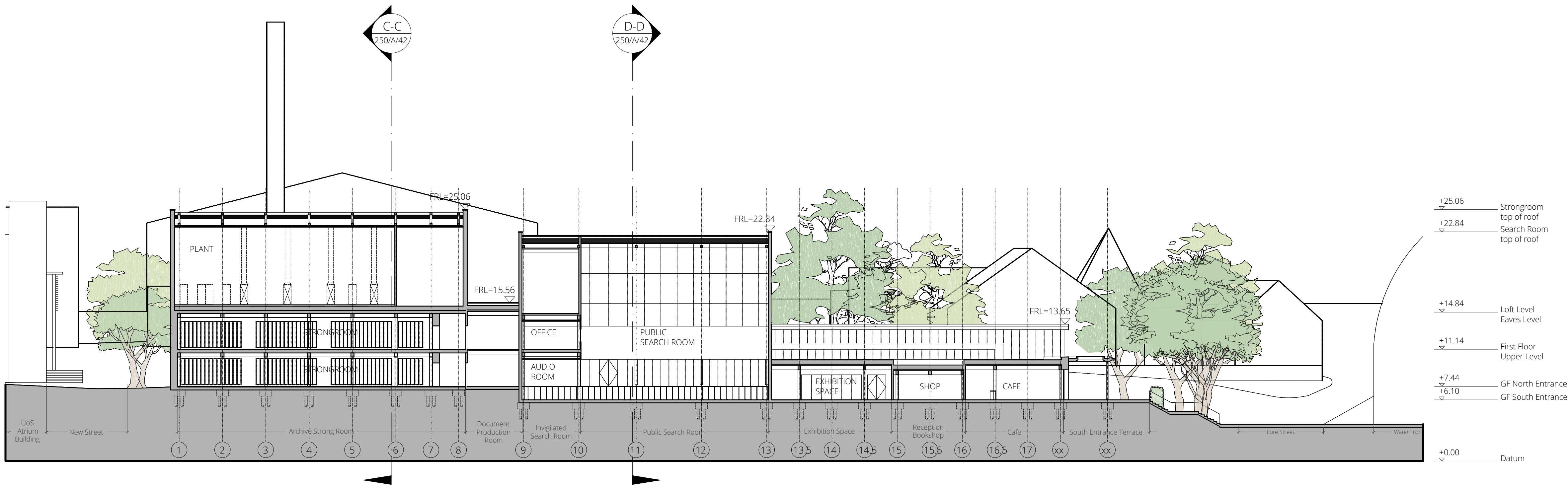
© Pringle Richards Sharratt Ltd: Studio 2.01, Canterbury Court, London, SW9 6DE: Company registered in England No. 3189549

0m 2m 5m 10m 25m

Scale bar for verification only

Work Package	Tender	Briefing	Construction

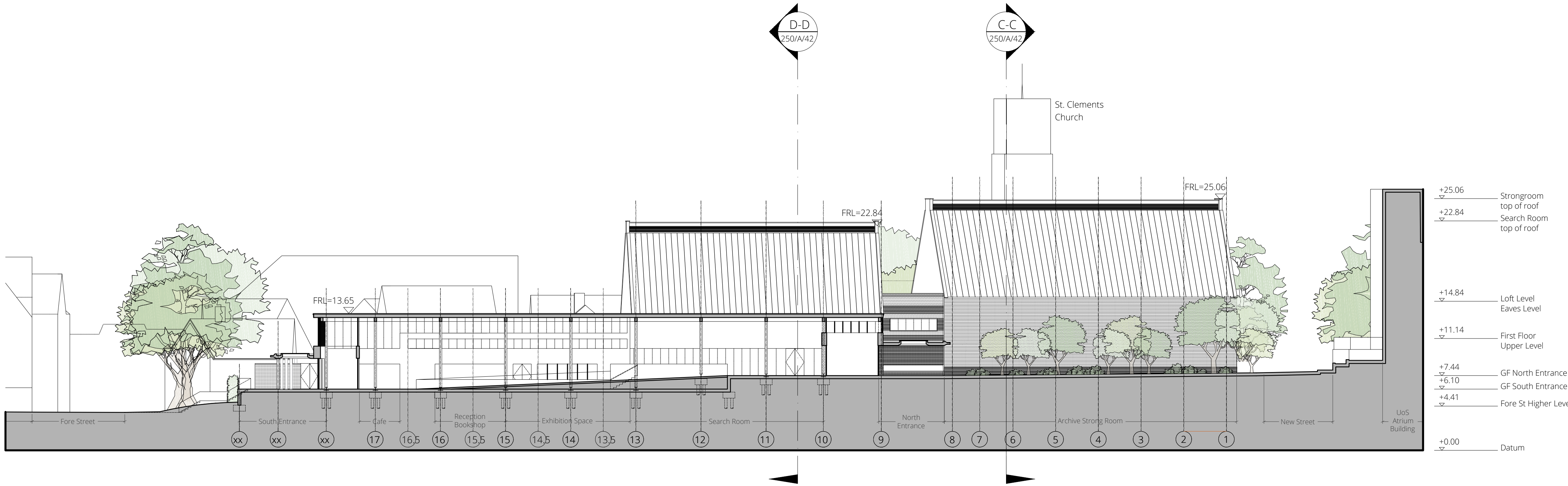
Date	Revision	Description
26.09.17	A	Planning issue



SECTION BB: LONG SECTION THROUGH ARCHIVE AND SEARCH ROOM

NOTES:

01. Main south entrance and cafe terrace with covered area
02. Feature clerestory glazing to south and north entrance and along whole public internal route
03. New stepped access to main south entrance and covered cafe terrace
04. New level access approach to main south entrance
05. Special high level PPC louvred ventilaion spine to Air Source Heat Pumb serving the whole building complex
06. Canopy to main north entrance seating and display point
07. Glazed and opening solid security ventilation panels
08. Special PPC low level louvres to serve Air Source Heat Pump
09. Strongroom service courtyard
10. Strongroom covered and enclosed secondary means of escape staircase
11. Strongroom private enclosed landscaped courtyard
12. PPC low level louvres to allow natural ventilation of main search room
13. Covered and enclosed bin store
14. Special glazed and louvred high level roof ridge cowl to allow light and natural ventilation to main search room space

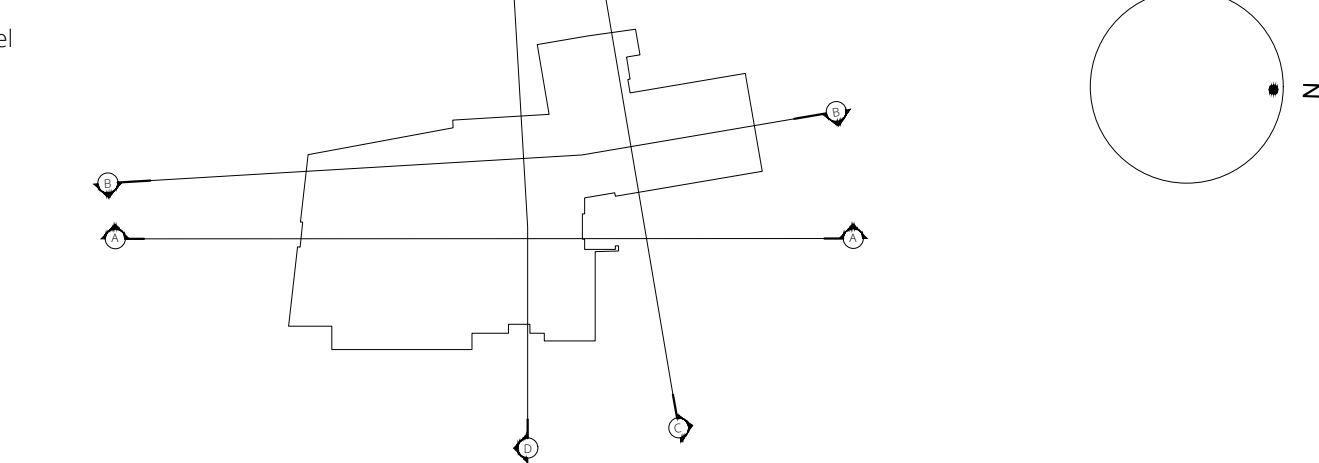


SECTION AA: PUBLIC ROUTE THROUGH THE BUILDING

LEGEND:

- Metallic standing seam roofing
- Suffolk red brickwork with feature:
 - Stone dressing to window apertures
 - Stone coping
 - Lowestoft buff banding
- PPC metal louvres
- Special feature roofing to ventilate search room and Air Source Heat Pump
- Existing and proposed trees
- Landscape
- Clerestory
- Windows

Key Plan



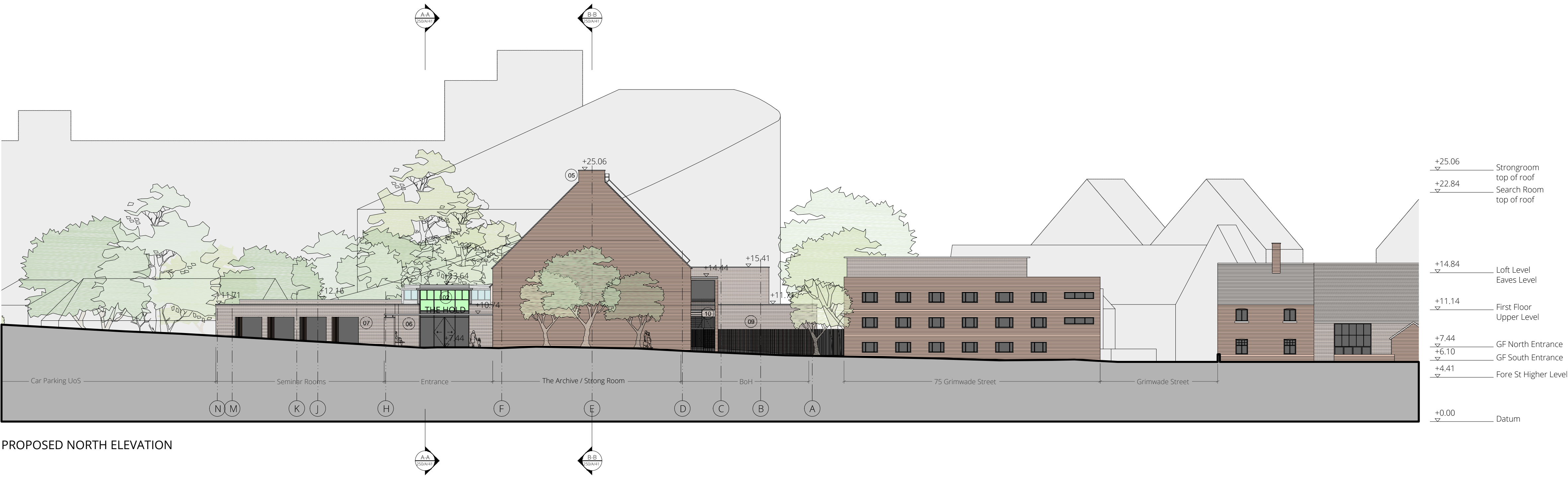
PLANNING

Read this drawing in association with all other relevant contract documents and risk assessments
Do not scale from this drawing. Use figured dimensions only. All dimensions to be checked and verified by the contractor on site.
© Pringle Richards Sharratt Ltd: Studio 2.01, Canterbury Court, London, SW9 6DE: Company registered in England No. 3189549

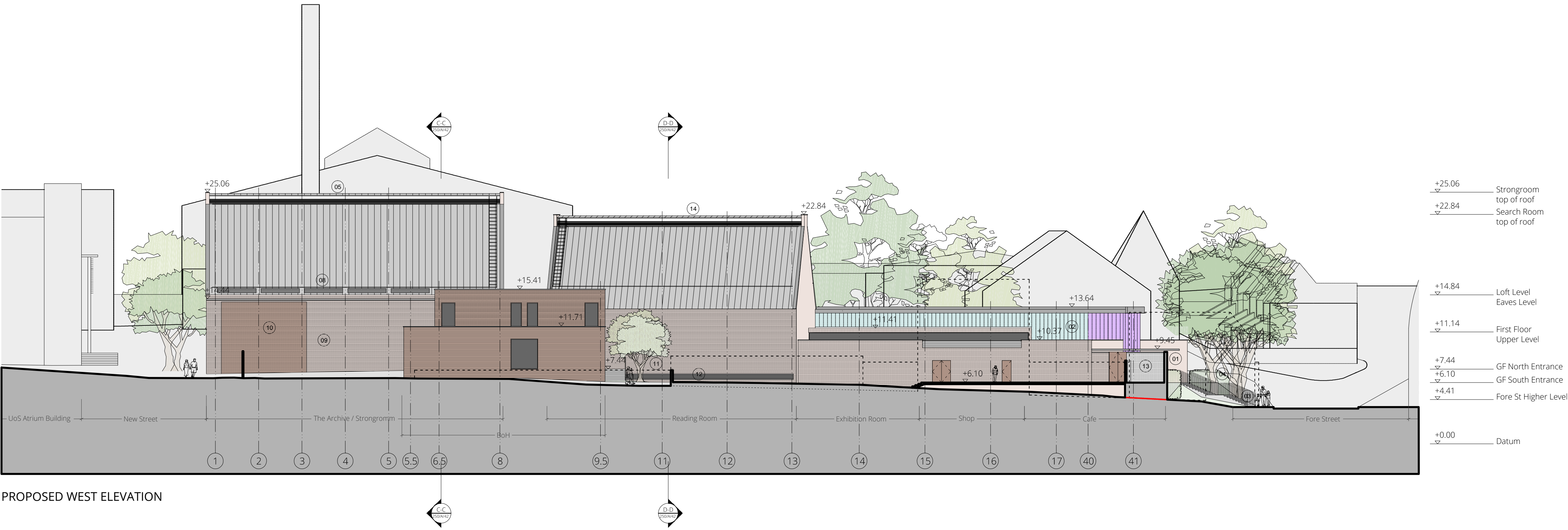
Work Package	Tender	Briefing	Construction

Date	Revision	Description
26.09.17	A	Planning issue

Project Ref:	The Hold	Funding raised by	The National Lottery	heritage lottery fund
Subject :	Proposed Long Sections AA and BB	and awarded by the	Heritage Lottery Fund	LOTTERY FUNDED
Drwg No :	HLD_250_A_41	Rev :	A	
Scale :	1:250	Original sheet size:	A1	



PROPOSED NORTH ELEVATION



PROPOSED WEST ELEVATION

NOTES:

- 01. Main south entrance and cafe terrace with covered area
- 02. Feature clerestory glazing to south and north entrance and along whole public internal route
- 03. New stepped access to main south entrance and covered cafe terrace
- 04. New level access approach to main south entrance
- 05. Special high level PPC louvred ventilaion spine to Air Source Heat Pumb serving the whole building complex
- 06. Canopy to main north entrance seating and display point
- 07. Glazed and opening solid security ventilation panels
- 08. Special PPC low level louvres to serve Air Source Heat Pump
- 09. Strongroom service courtyard
- 10. Strongroom covered and enclosed secondary means of escape staircase
- 11. Strongroom private enclosed landscaped courtyard
- 12. PPC low level louvres to allow natural ventilation of main search room
- 13. Covered and enclosed bin store
- 14. Special glazed and louvred high level roof ridge cowl to allow light and natural ventilation to main search room space

LEGEND:

Metalic standing seam roofing

Suffolk red brickwork with feature:

- Stone dressing to window apertures
- Stone coping
- Lowestoft buff banding

PPC metal louvres

Special feature roofing to ventilate search room and Air Source Heat Pump

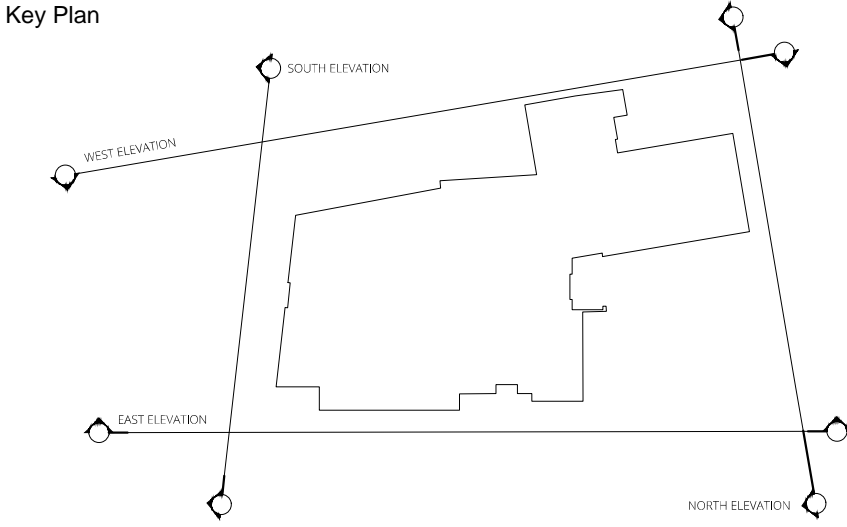
Existing and proposed trees

Landscape

Clerestory

Windows

Key Plan



PLANNING

Read this drawing in association with all other relevant contract documents and risk assessments

Do not scale from this drawing. Use figured dimensions only. All dimensions to be checked and verified by the contractor on site.

© Pringle Richards Sharratt Ltd: Studio 2.01, Canterbury Court, London, SW9 6DE: Company registered in England No. 3189549

0m

2m

5m

10m

25m

Scale bar for verification only

Work Package	Tender	Briefing	Construction

Date	Revision	Description
26.09.17	A	Planning issue

Project Ref:

The Hold

Subject :

Proposed North and West Elevations

Drwg No :

HLD_250_A_62

Scale :

1:250

Funding raised by

The National Lottery

and awarded by the Heritage Lottery Fund

Rev :

A

Original sheet size:

A1

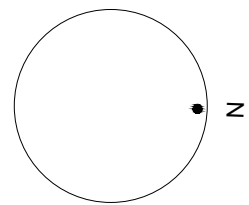
LOTTERY FUNDED



NOTES:

LEGEND:

- Main entrances
- Levels
- Site boundary
- Existing trees
- Asphalt black
- Landscape areas
- Concrete paving
- Natural stone paving



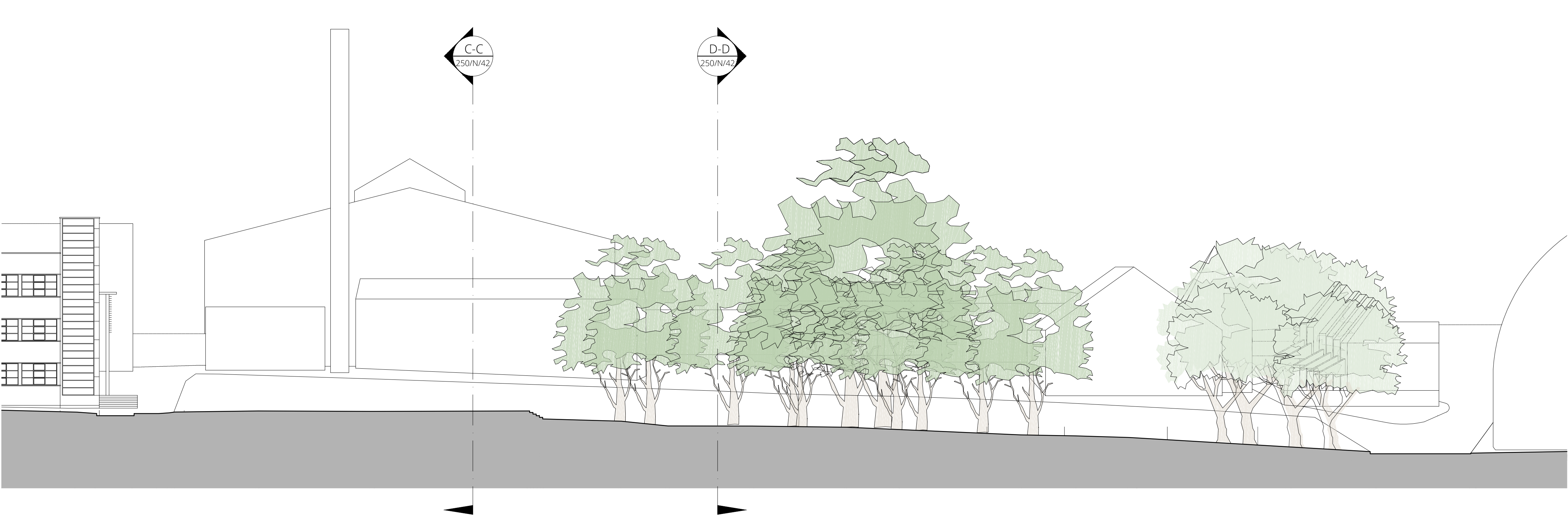
PLANNING

Read this drawing in association with all other relevant contract documents and risk assessments
Do not scale from this drawing. Use figured dimensions only. All dimensions to be checked and verified by the contractor on site.
© Pringle Richards Sharratt Ltd: Studio 2.01, Canterbury Court, London, SW9 6DE: Company registered in England No. 3189549
0m 2m 5m 10m 25m
Scale bar for verification only

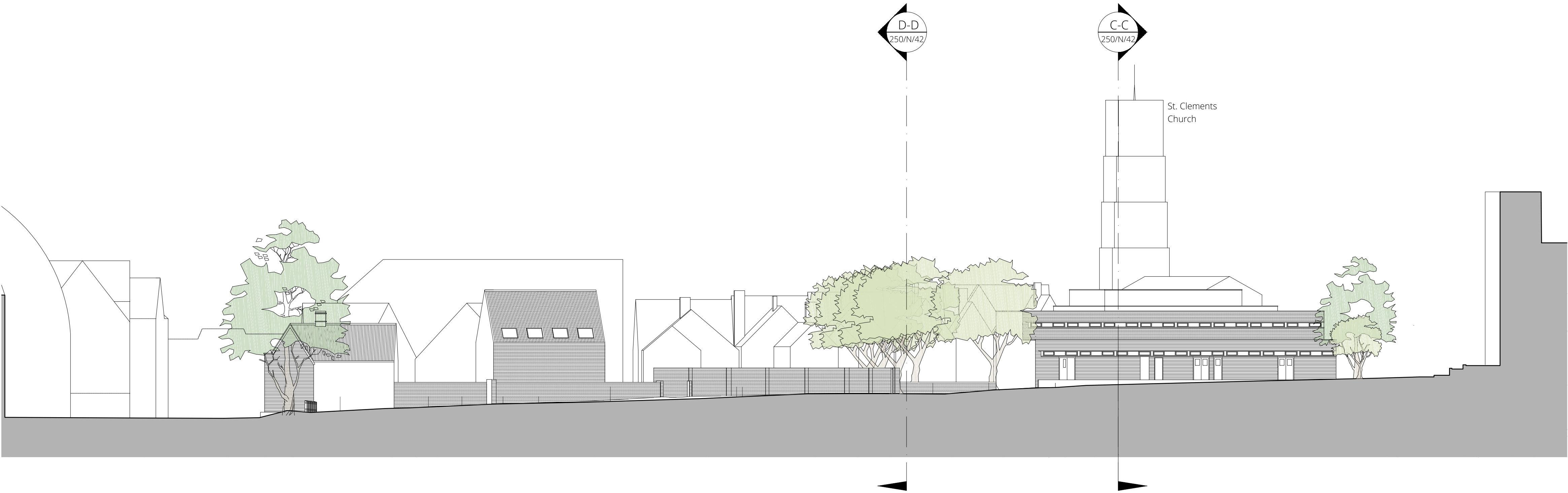
Work Package	Tender	Briefing	Construction

Date	Revision	Description
26.09.17	A	Planning issue

Project Ref:	The Hold	Funding raised by The National Lottery and awarded by the Heritage Lottery Fund	LOTTERY FUNDED
Subject:	Existing Ground Floor Plan	Rev:	A
Drwg No:	HLD_250_N_01	Original sheet size:	A1
Scale:	1:250		



EXISTING SECTION BB



EXISTING SECTION AA

Read this drawing in association with all other relevant contract documents and risk assessments

Do not scale from this drawing. Use figured dimensions only. All dimensions to be checked and verified by the contractor on site.

© Pringle Richards Sharratt Ltd: Studio 2.01, Canterbury Court, London, SW9 6DE: Company registered in England No. 3189549

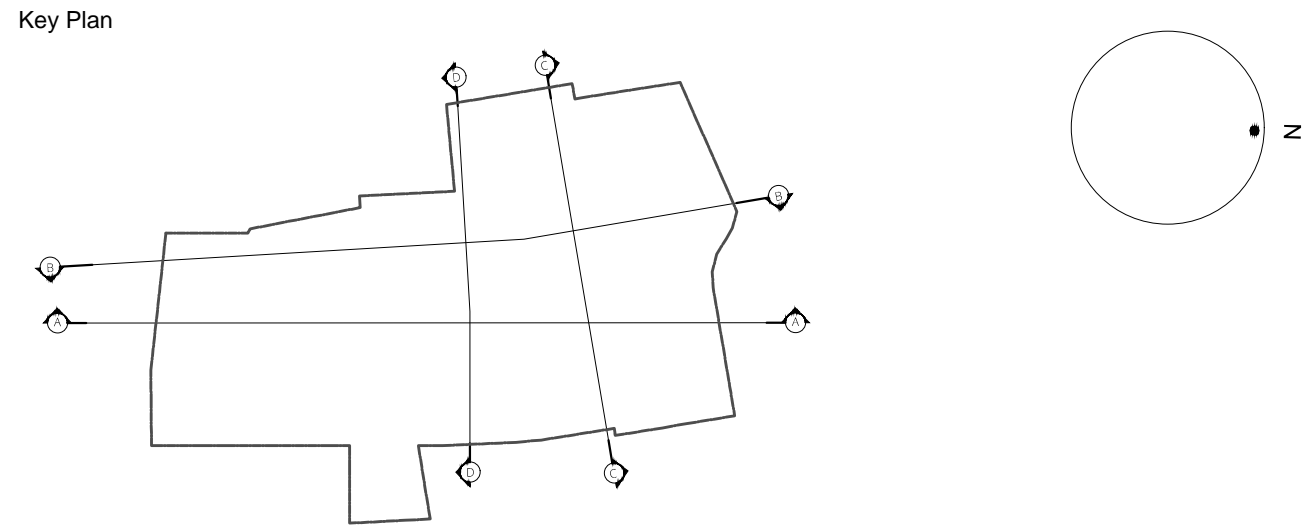
0m2m5m10m25m

Scale bar for verification only

Work Package	Tender	Briefing	Construction

Date	Revision	Description
26.09.17	A	Planning issue

NOTES:



PLANNING

Project Ref: The Hold

Subject : Existing Long Sections AA and BB

Drwg No : HLD_250_N_41

Scale : 1:250

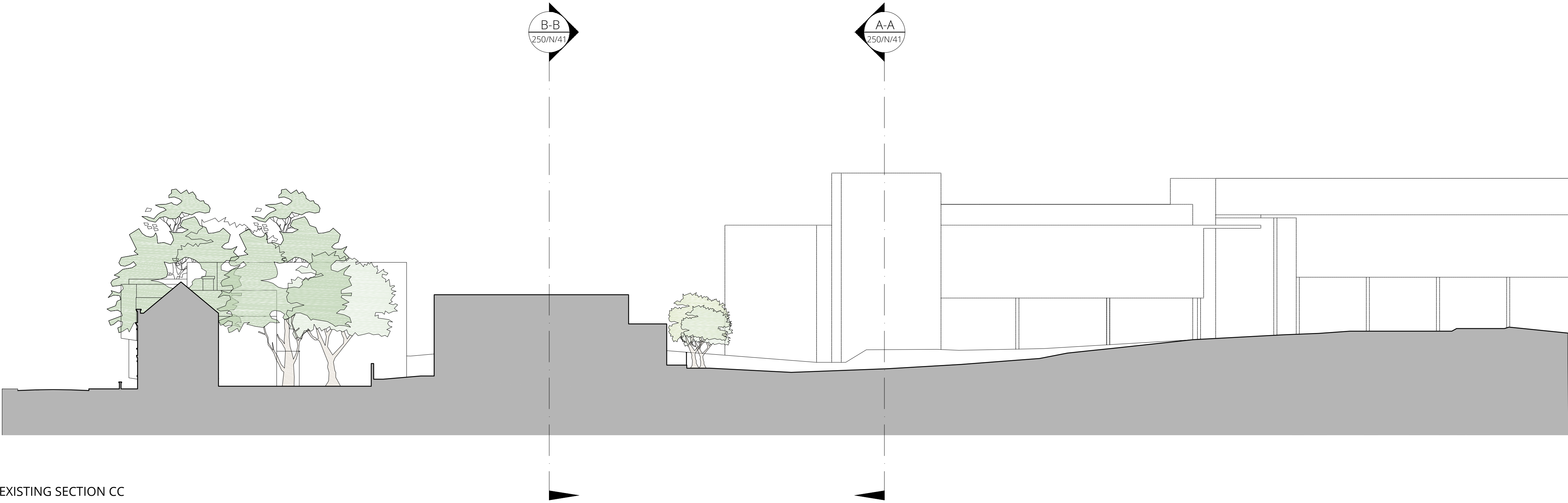
Funding raised by
The National Lottery
and awarded by the Heritage Lottery Fund

Rev : A

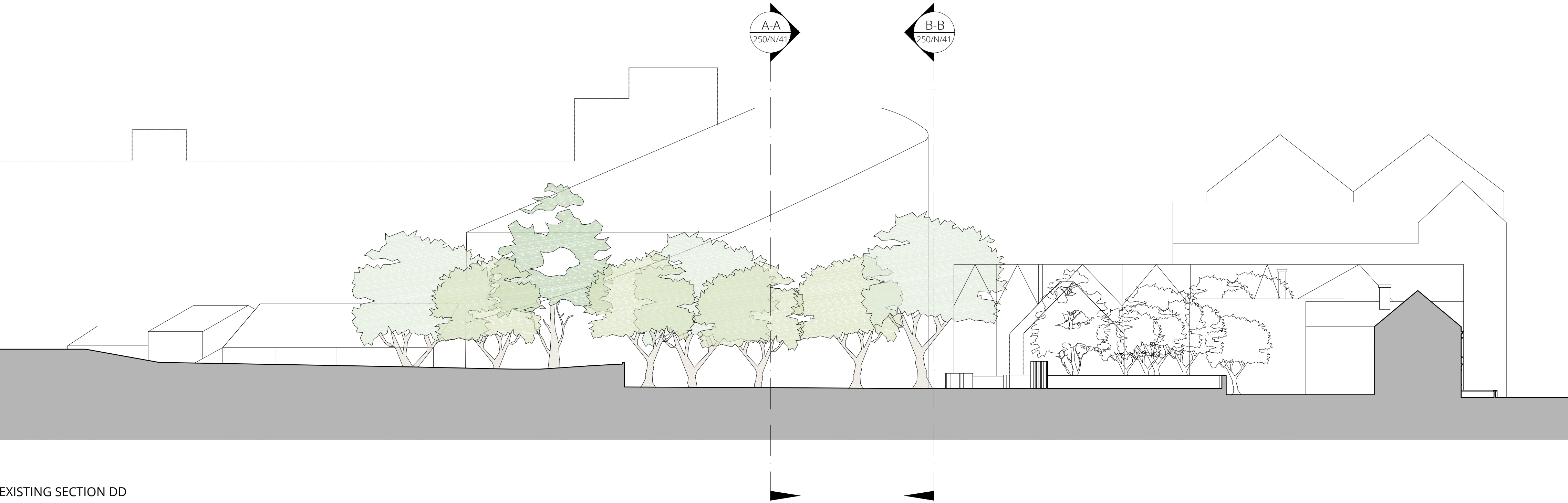
Original sheet size: A1

LOTTERY FUNDED

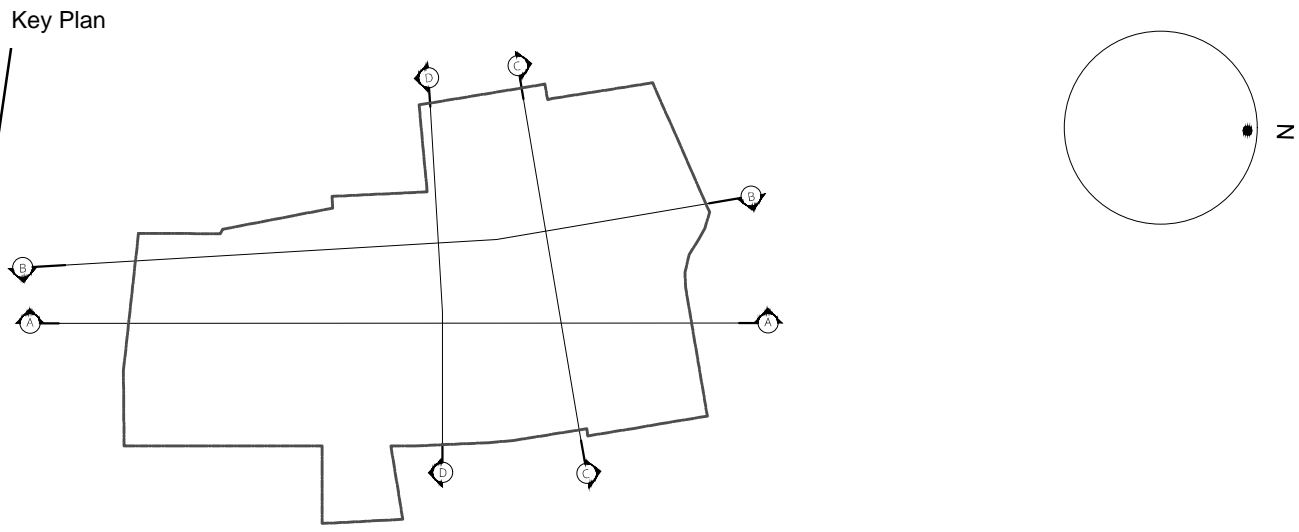
NOTES:



EXISTING SECTION CC



EXISTING SECTION DD



PLANNING


Read this drawing in association with all other relevant contract documents and risk assessments
Do not scale from this drawing. Use figured dimensions only. All dimensions to be checked and verified by the contractor on site.
© Pringle Richards Sharratt Ltd: Studio 2.01, Canterbury Court, London, SW9 6DE: Company registered in England No. 3189549

0m 2m 5m 10m 25m

Scale bar for verification only

Work Package	Tender	Briefing	Construction

Date	Revision	Description
26.09.17	A	Planning issue

Project Ref:	The Hold	Funding raised by The National Lottery and awarded by the Heritage Lottery Fund	 LOTTERY FUNDED
Subject :	Existing Cross Sections	Rev :	A
Drwg No :	HLD_250_N_42	Original sheet size:	A1
Scale :	1:250		

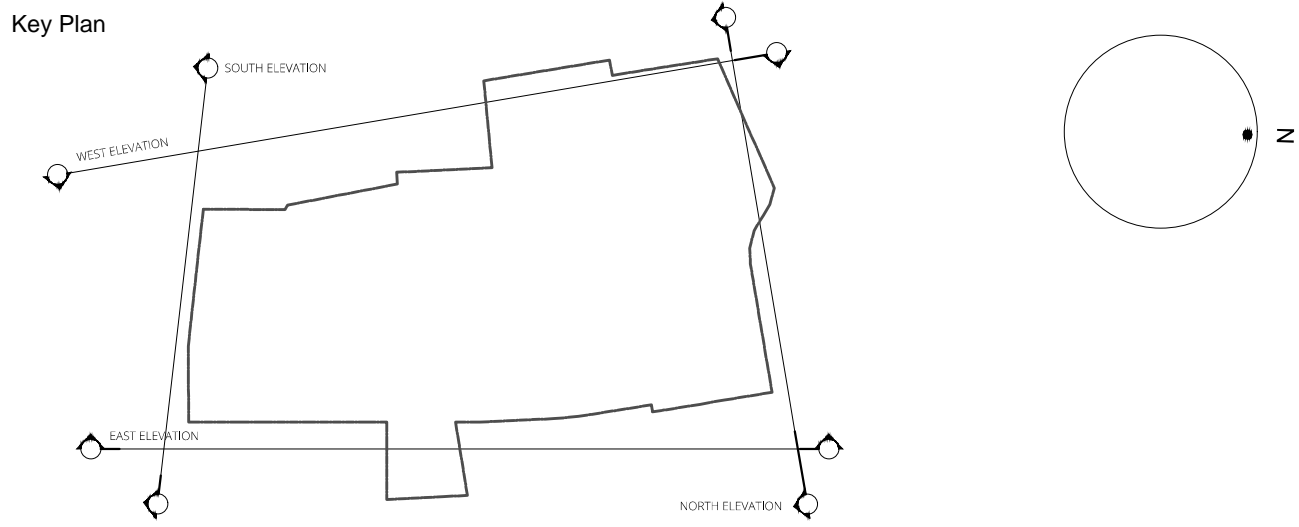


EXISTING SOUTH ELEVATION



EXISTING EAST ELEVATION

NOTES:



PLANNING


Read this drawing in association with all other relevant contract documents and risk assessments
Do not scale from this drawing. Use figured dimensions only. All dimensions to be checked and verified by the contractor on site.
© Pringle Richards Sharratt Ltd: Studio 2.01, Canterbury Court, London, SW9 6DE: Company registered in England No. 3189549

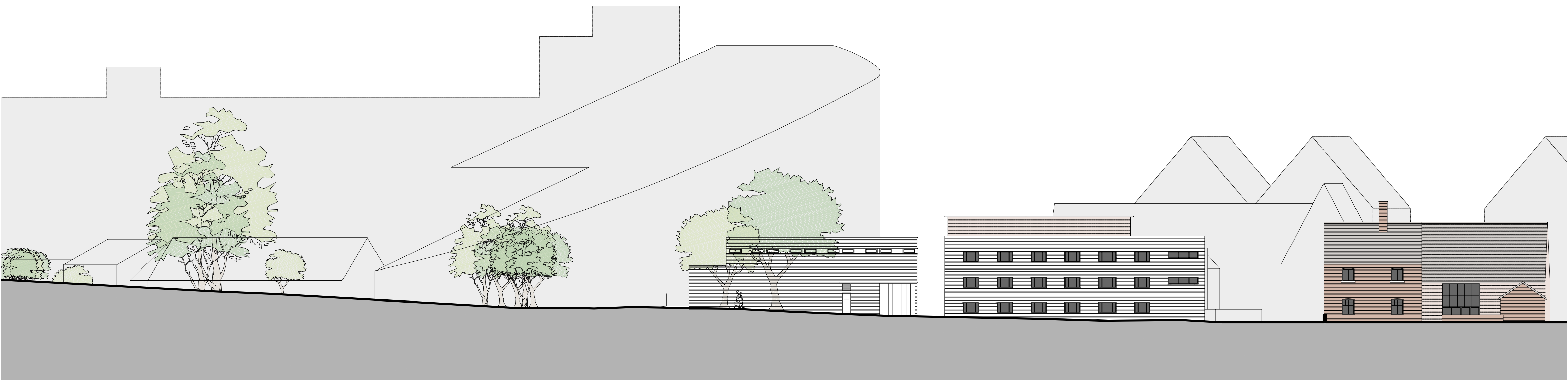
0m 2m 5m 10m 25m

Scale bar for verification only

Work Package	Tender	Briefing	Construction

Date	Revision	Description
26.09.17	A	Planning issue

Project Ref:	The Hold	Funding raised by	
Subject:	Existing South and East Elevations	and awarded by the Heritage Lottery Fund	LOTTERY FUNDED
Drwg No:	HLD_250_N_61	Rev:	A
Scale:	1:250	Original sheet size:	A1

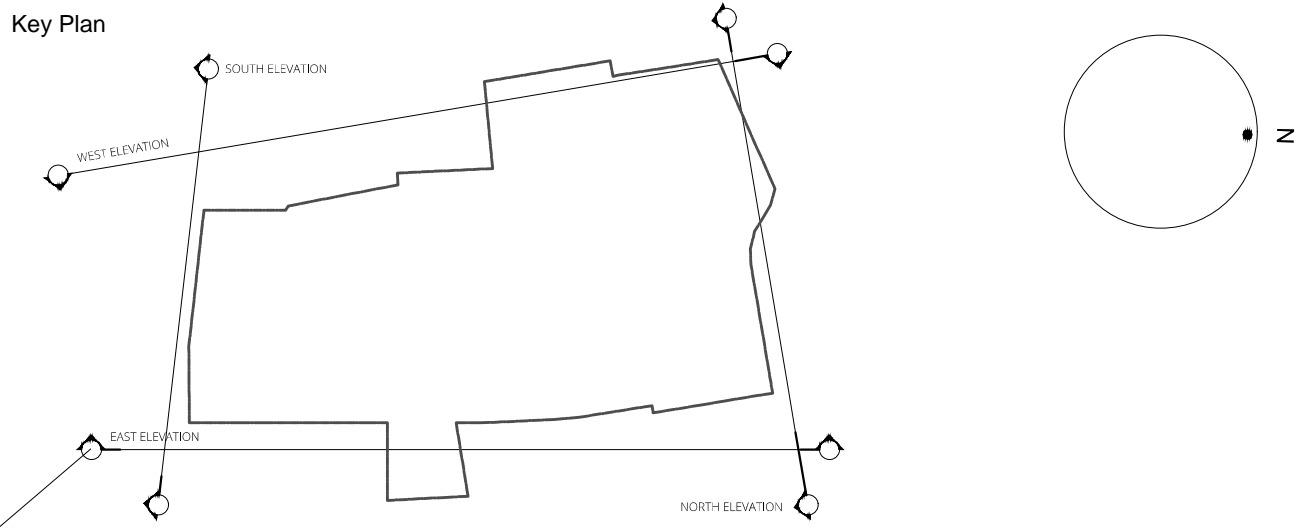


EXISTING NORTH ELEVATION



EXISTING WEST ELEVATION

NOTES:



PLANNING

Read this drawing in association with all other relevant contract documents and risk assessments

Do not scale from this drawing. Use figured dimensions only. All dimensions to be checked and verified by the contractor on site.

© Pringle Richards Sharratt Ltd: Studio 2.01, Canterbury Court, London, SW9 6DE: Company registered in England No. 3189549

0m

2m

5m

10m

25m

Scale bar for verification only

Work Package	Tender	Briefing	Construction

Date	Revision	Description
26.09.17	A	Planning issue

Project Ref: The Hold

Subject : Existing North and West Elevations

Drwg No : HLD_250_N_62

Scale : 1:250

Funding raised by
The National Lottery
and awarded by the Heritage Lottery Fund

Rev : A

Original sheet size: A1

LOTTERY FUNDED