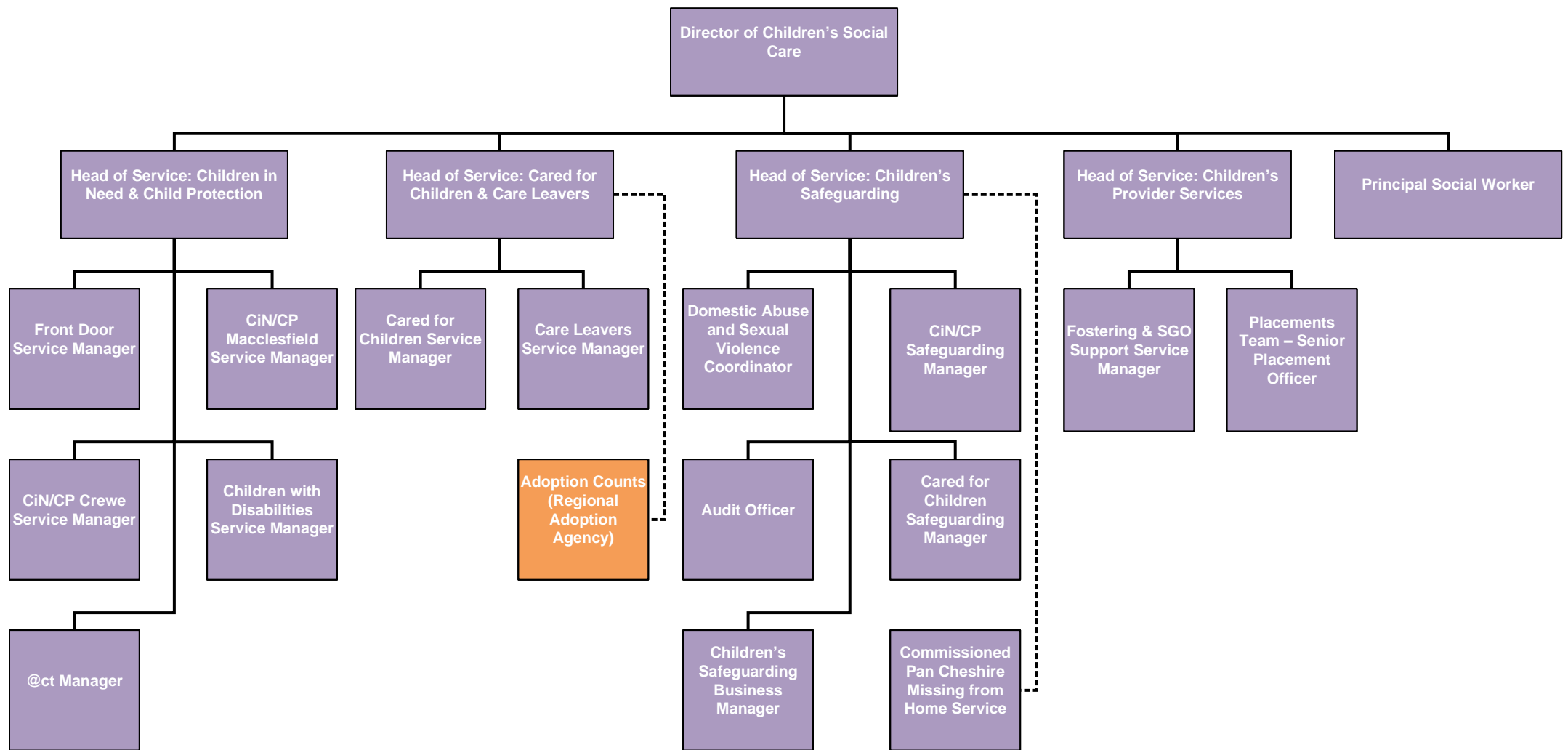
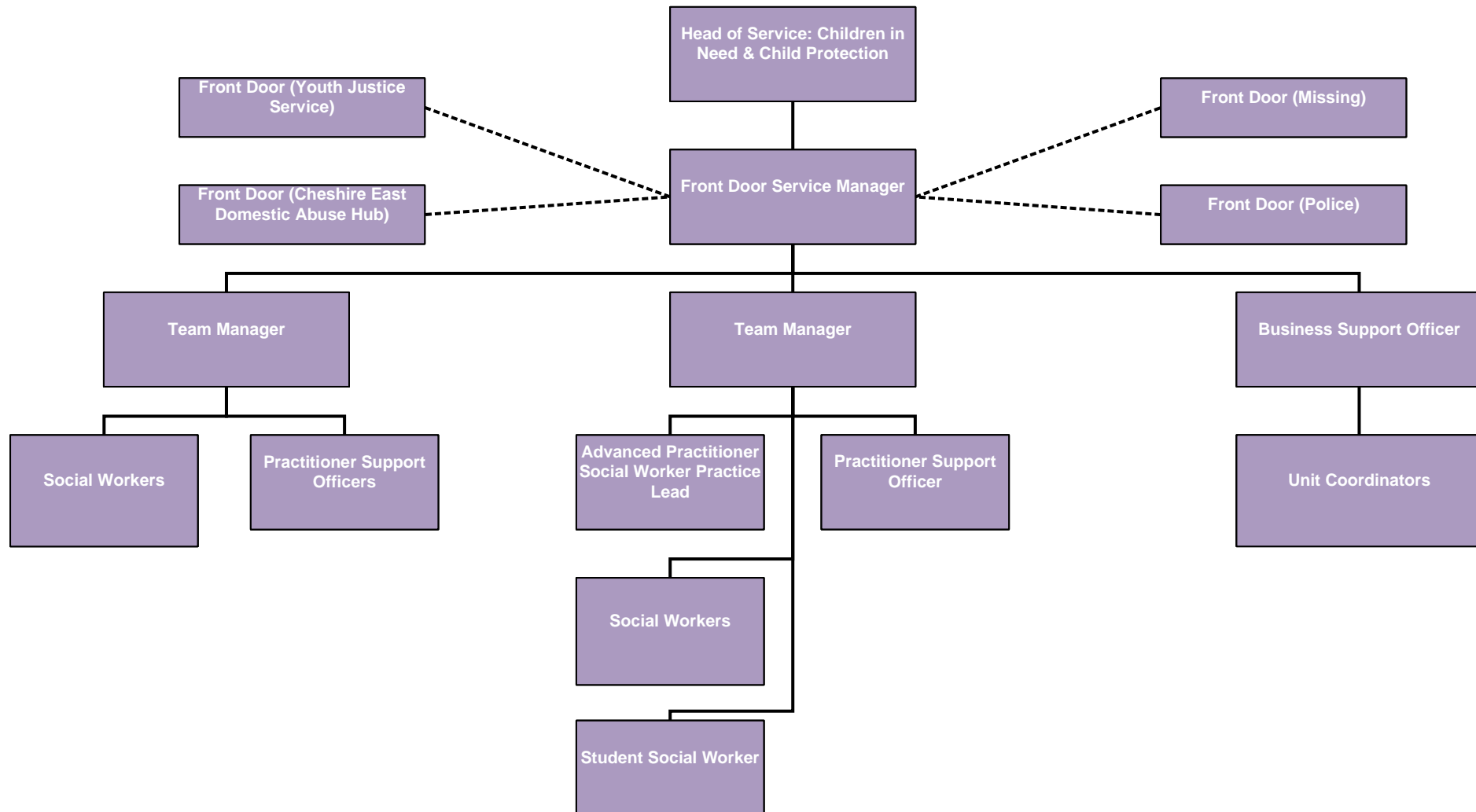


# Children's Social Care



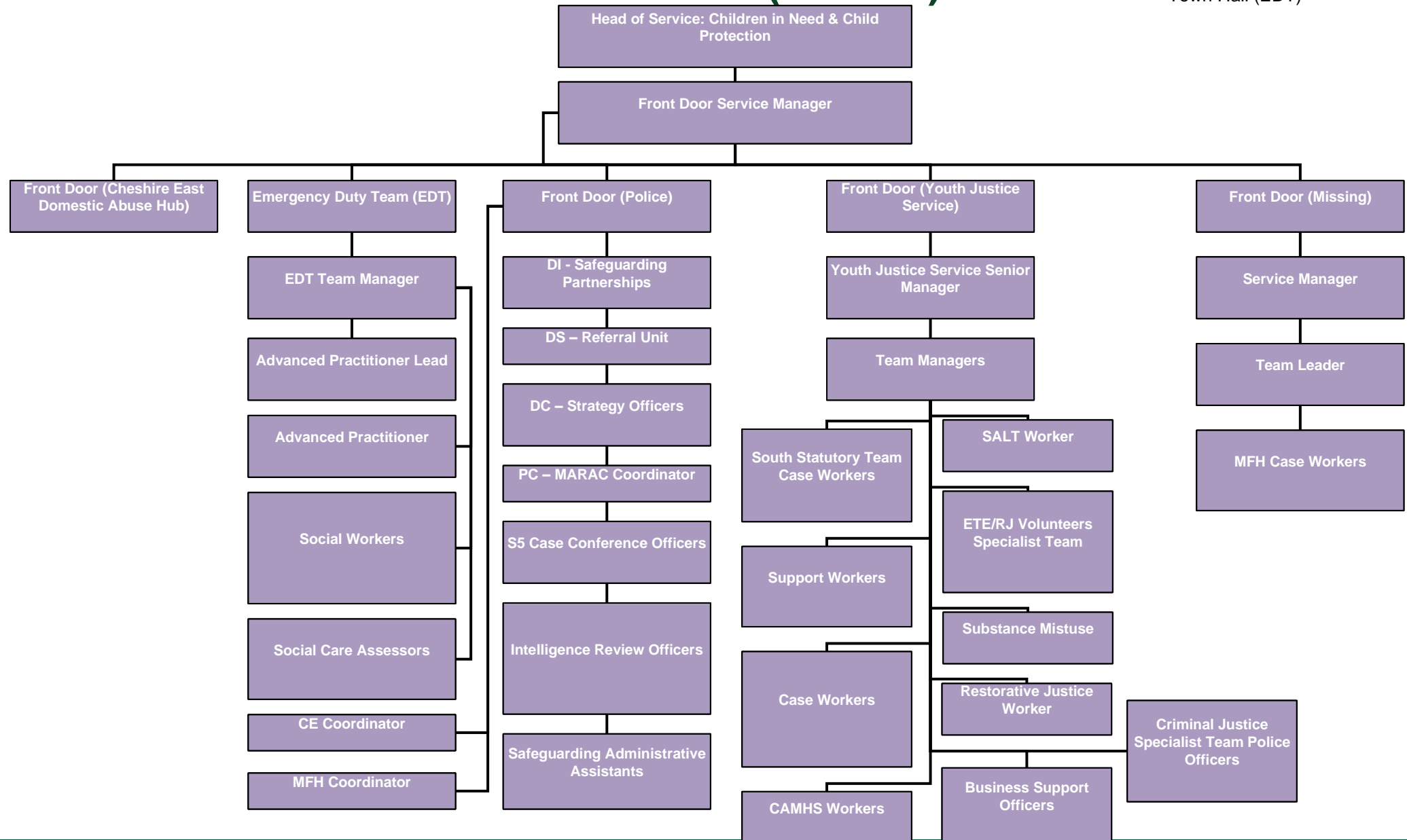
# Cheshire East Consultation Service (ChECS)

Based at Delamere House, Crewe



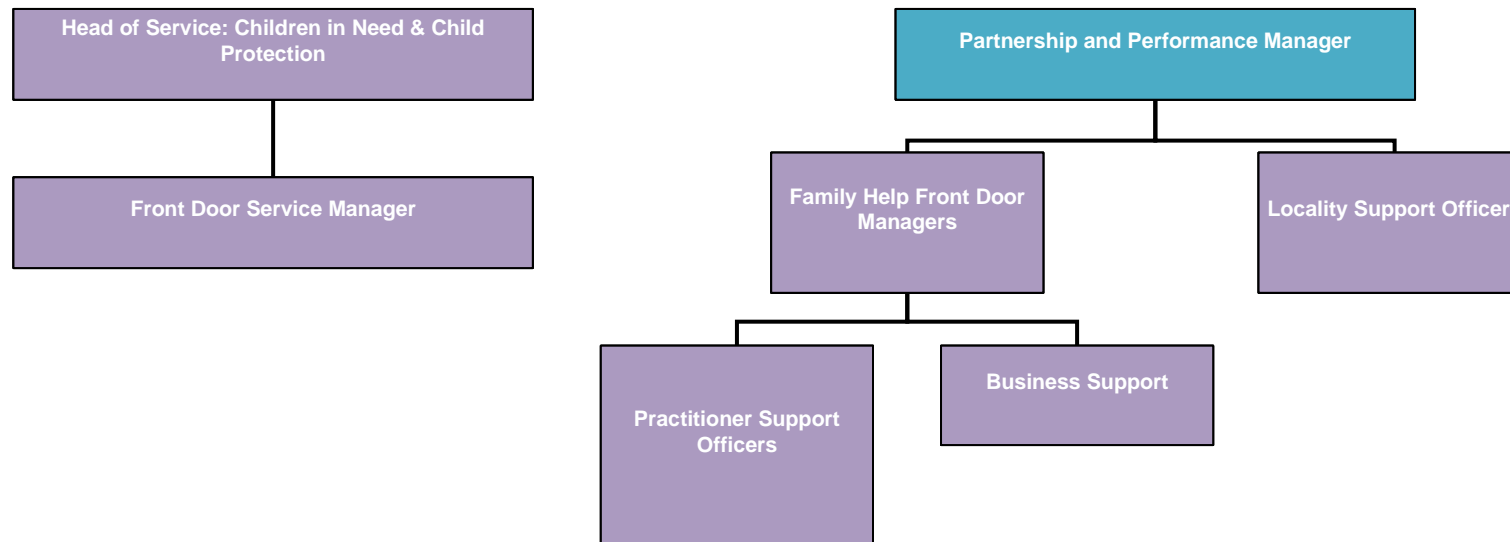
# Cheshire East Consultation Service (ChECS)

Based at Delamere House, Crewe and Macclesfield  
Town Hall (EDT)



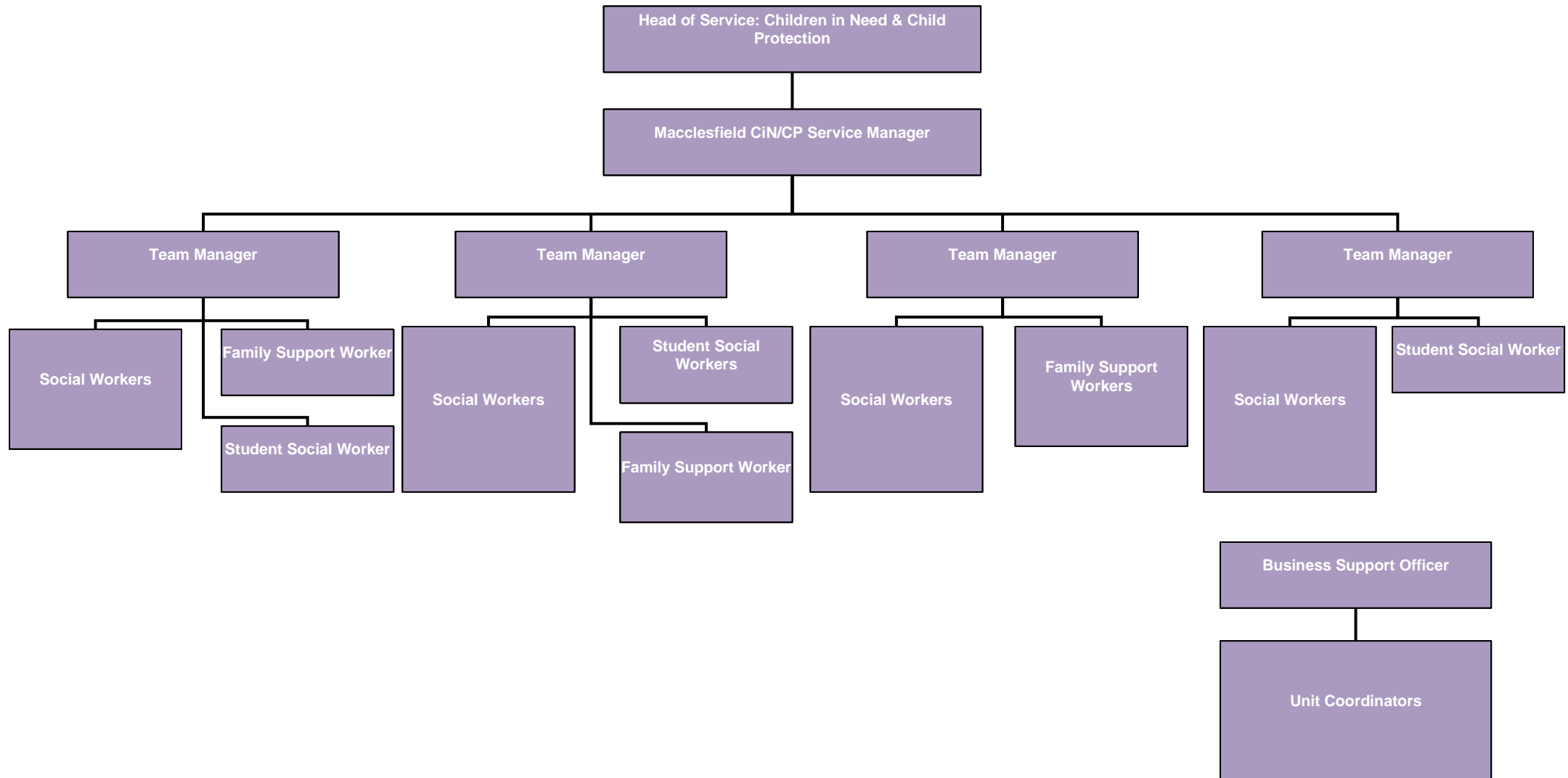
# Early Help Brokerage

Based at Delamere House, Crewe



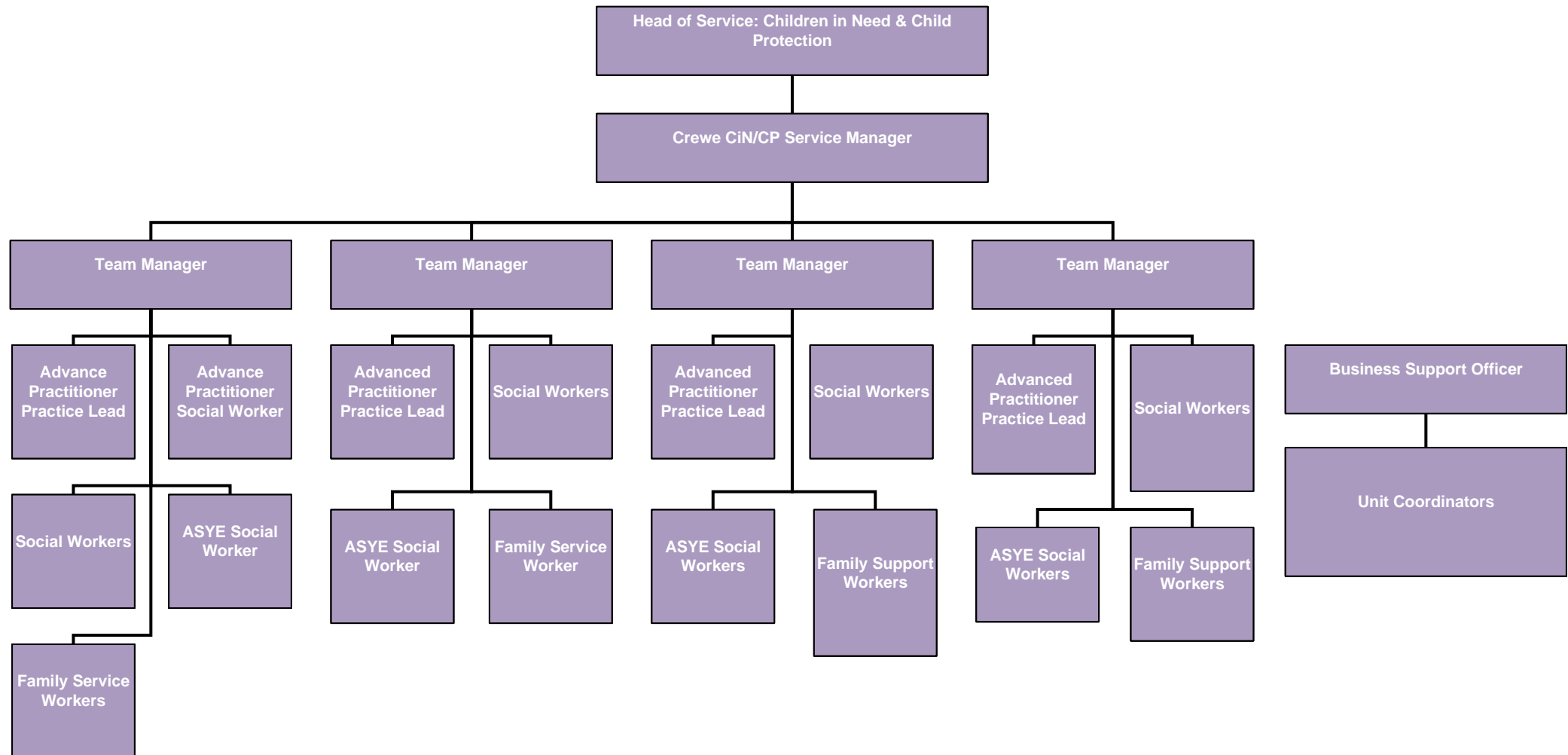
# Children in Need and Child Protection - Macclesfield

Based at Macclesfield Town Hall



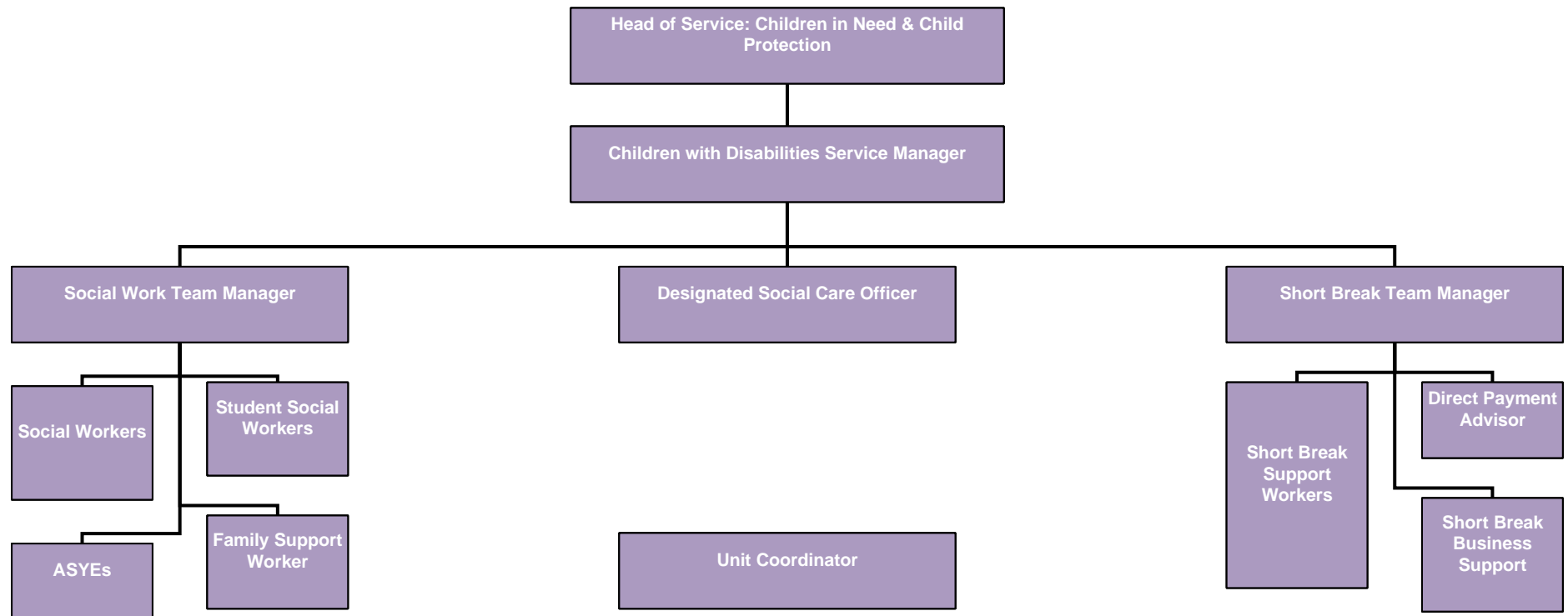
# Children in Need and Child Protection - Crewe

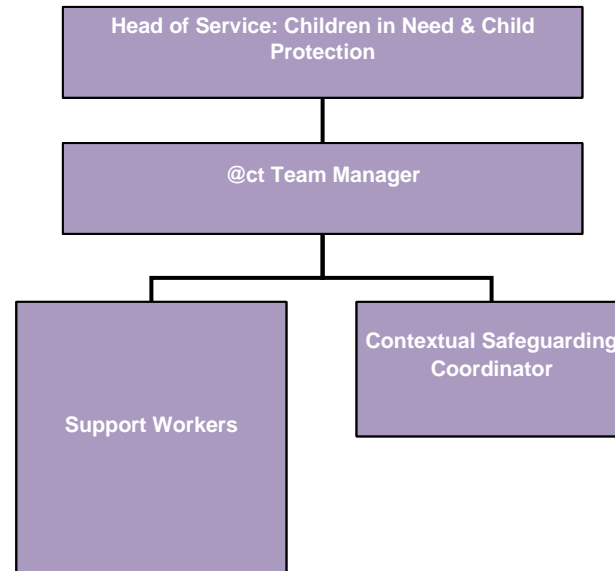
Based at Delamere House, Crewe



# Children with Disabilities

Based at Cledford House, Middlewich and  
Macclesfield Town Hall

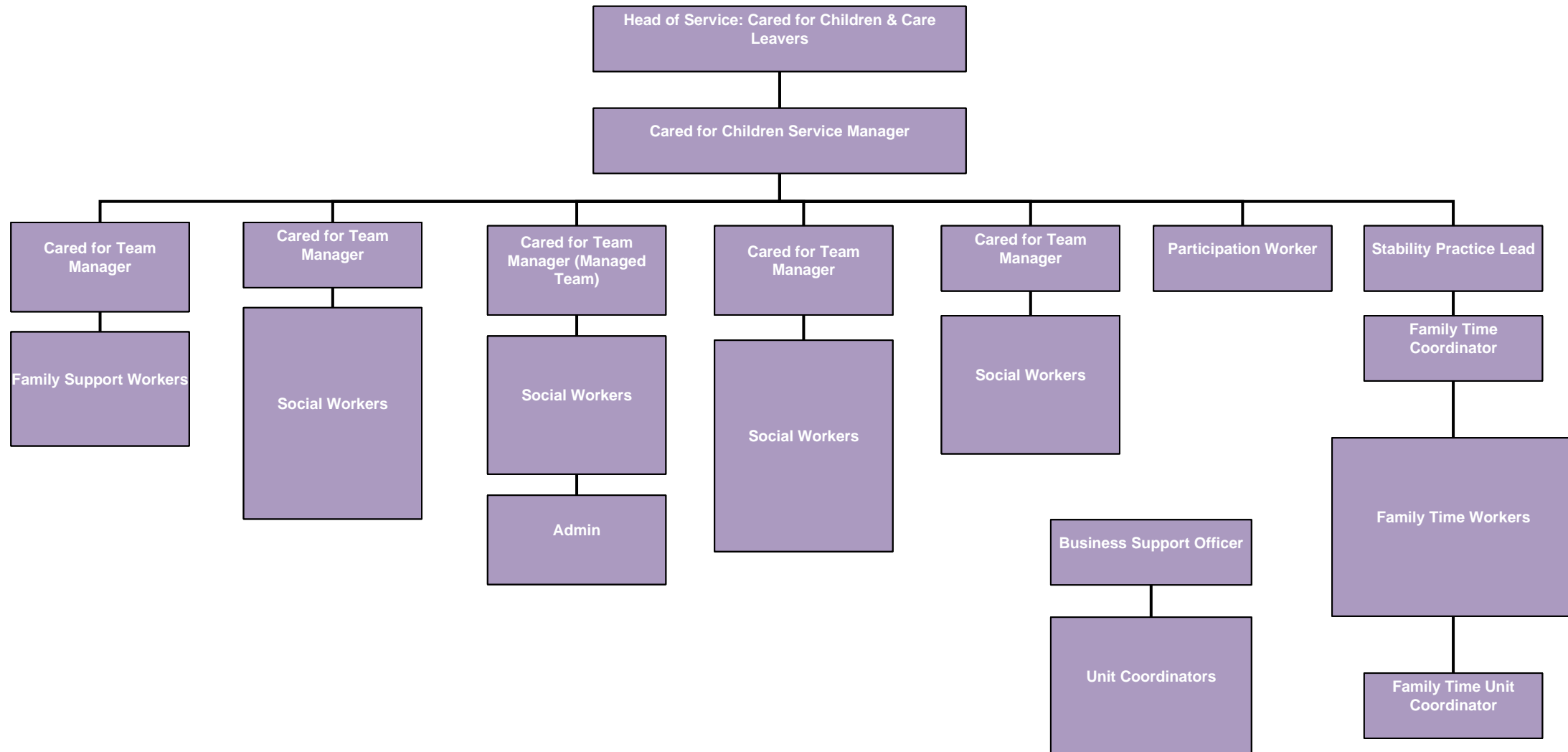






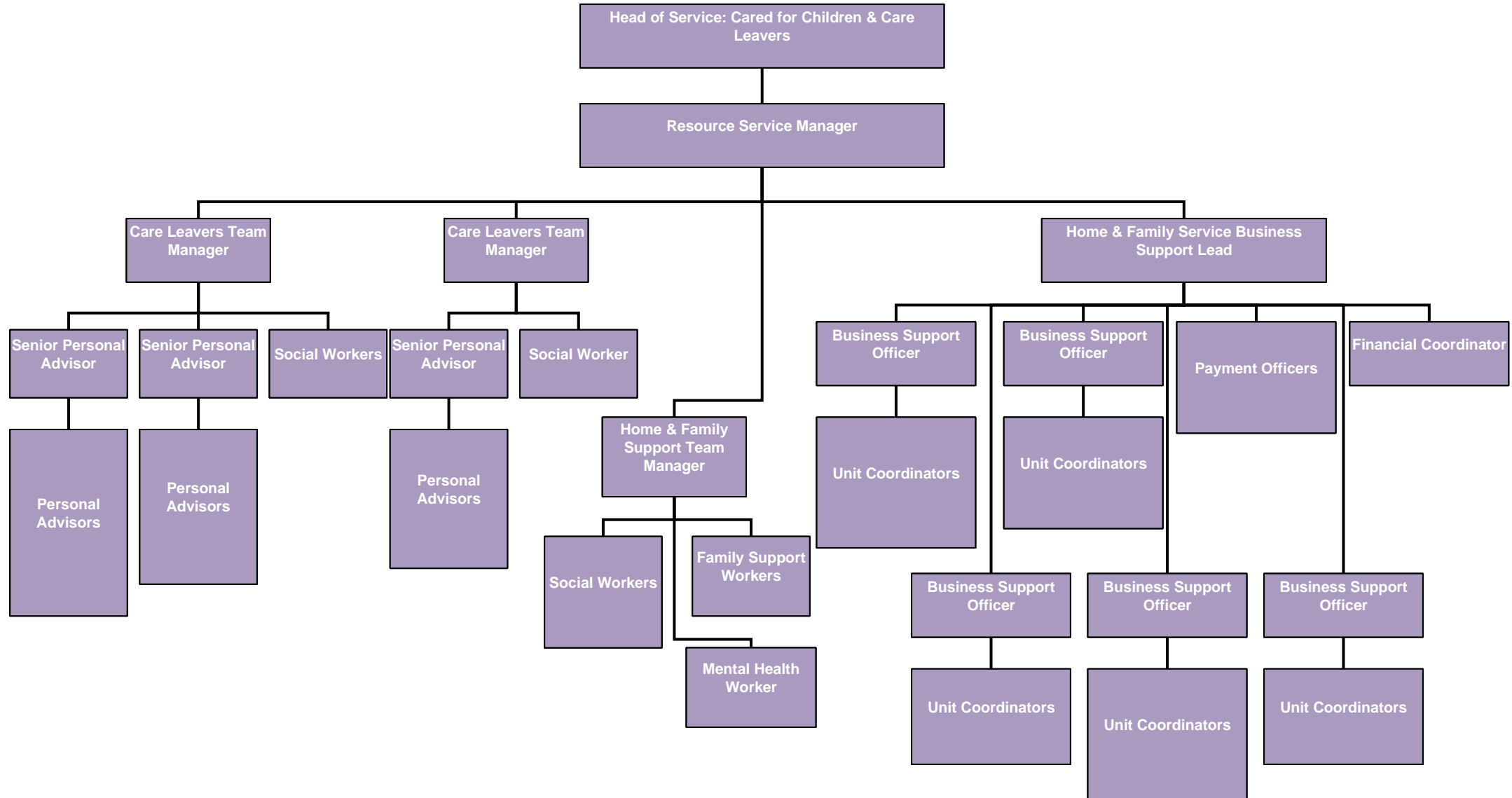
# Cared for Children

Based at Cledford House, Middlewich



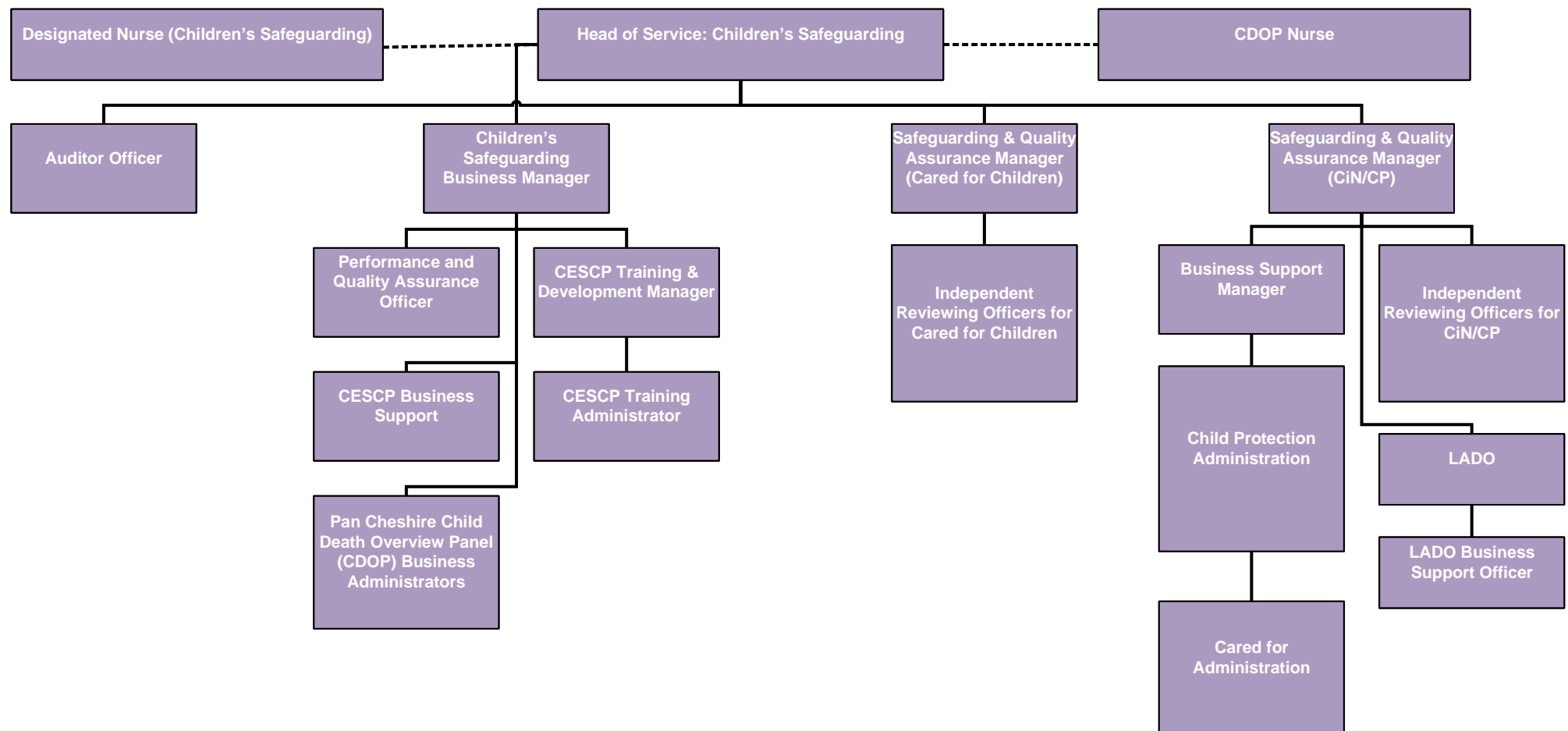
# Resource Service

Based at Cledford House, Middlewich



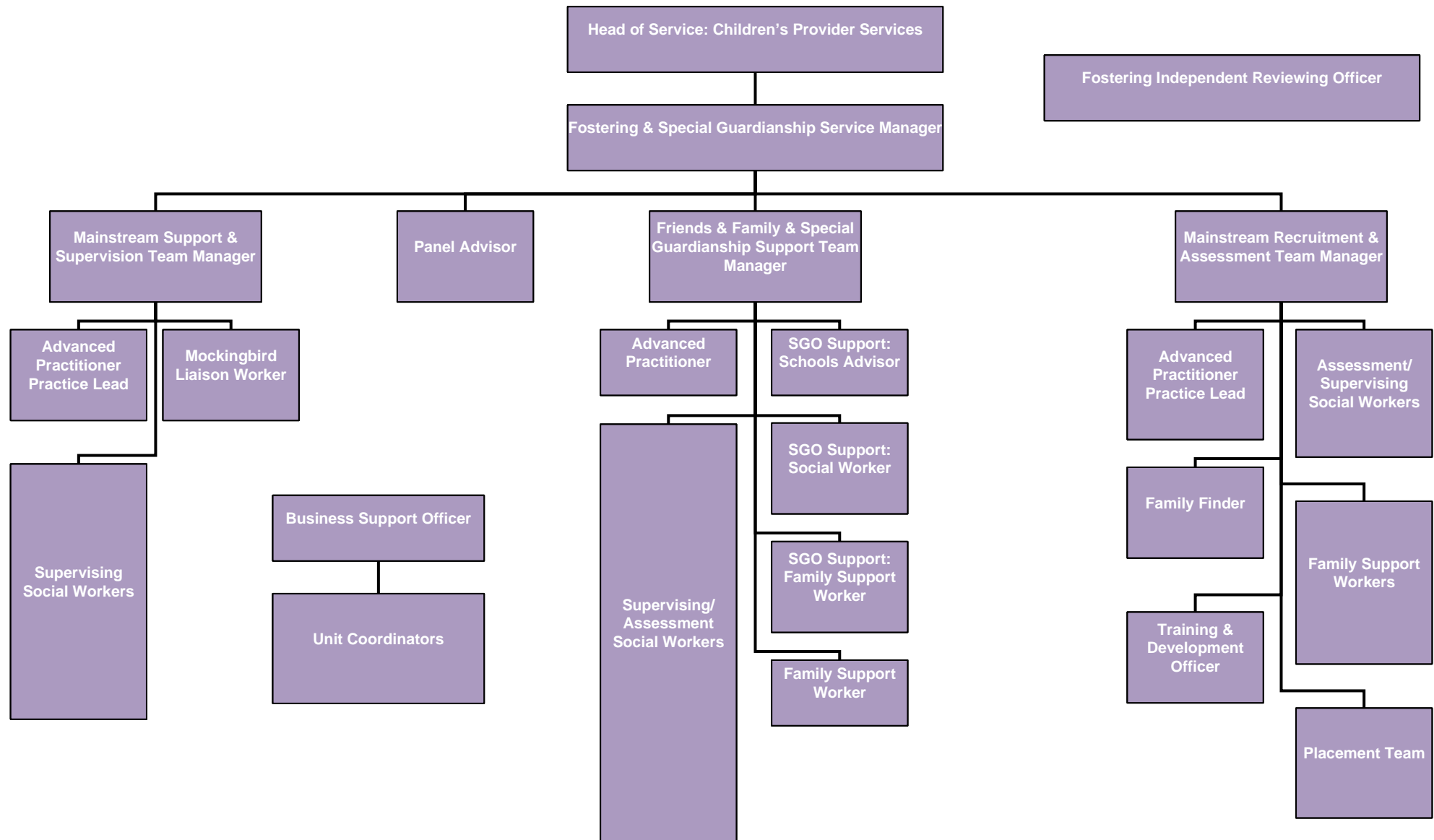
# Children's Safeguarding

Based at Macclesfield Town Hall, Westfields,  
and Congleton Police Station



# Fostering and Special Guardianship

Based at Cledford House, Middlewich



# Lead Practitioners

Based at Macclesfield, Crewe & Middlewich

