

ADM UNITS IN THE COMM Z

NOTE: These pages list the types of units of the main adm svcs which may be found in the comm Z. The list is a formidable one, but it is most unlikely that all these units will be required in a theatre of war. The size and shape of the adm sp in a theatre of war must be tailored to the requirements of the force, taking into acct the type and likely duration of ops and local resources avail.

Svc (a)	Unit (b)	Remarks (c)
<u>ST</u>	<u>Tpt Units</u>	
	HQ tpt colm	Can cmd up to 4 coys.
	HQ tpt coy	Comds 2-4 pls.
	Tk tptr coy	} Contain 2-4 pls, each op 16 task vehs.
	Amphibian coy	
	Tipper coy	} Contain 2-4 pls, each op 20 task vehs. The lift depends on type of veh.
	Pet tpt coy	
	Water truck coy	} Spec estb related to HQ sp.
	MAC	
	Car coy	} Spec estb related to the eqpt to be carried.
	GW coy	
	Br coy	} Contains 2-4 pls, each op 20 task vehs. Can be 3-ton or 10-ton vehs or a mixture of both.
	GT coy	
	Pack tpt coy	Contains 2-4 tps each of 72 animals.
	HQ water tpt gp	Comds 2-6 water tpt units.
	Water tpt coy	Normally contains 3 flotillas.
	Amb launch flotilla	} Normally grouped as geographically most convenient under HQ water tpt gp.
	Boat, stores, dep	
	Fast launch coy	
	Har launch coy	
	Mil oil barge coy	
	GS launch coy	
	Army fire boat crew	
	LCT sqn	} Contains 3 flotillas.
	PTF launch coy	
	<u>Air Sup Units</u>	
	HQ AASO	} Allotted as required.
	Air sup ocn secs	
	AD coy	
	Air sup pl	
	<u>Sup Units</u>	
	HQ sup gp	Ex tech con over 2-5 maj sup holding units and such fd bakery coys, sup coys, etc as are allocated.
	BSD	One per 30,000 men in the force, it holds the stocks in FMA and RMA.
	HQ sup coy	Comds 2-5 sup, port, fd bakery, fd butchery or cold storage dep pls.

ADM UNITS IN THE COMM Z (Cont)

Svc	Unit	Remarks
(a)	(b)	(c)
<u>ST</u> (cont)	Sup pl	Issues in detail to 9,000 men.
	HQ fd bakery coy	Can cmd and adm 3 fd bakery pls and one fd bakery maint pl.
	Fd bakery pl	Can bake 10,000 lbs of bread in 8 hrs.
	Fd bakery maint pl	Provides the mob eqpt for three fd bakery pls.
	HQ cold storage dep coy	Comds up to 5 cold storage dep pls.
	Cold storage dep pl	One per 30,000 men in the force.
	HQ fd butchery coy	Comds 2-5 butchery pls.
	Fd butchery pl	One per 12,000 men for whom meat has to be slaughtered.
	Port pl	A basic unit in the PTF.
	<u>POL Units</u>	
	HQ pet gp	Cons 3-5 pet coys.
	HQ pet coy	Comds 3-5 pet pls.
	Pet storage pl	Can hold 20,000 tons of POL in 1,200 ton tks, with daily issues and receipts totalling 3,000 tons. If smaller tks are avail and have to be used to provide better dispersion or quick assy it will not be able to hold as much.
	Pet pl	Can issue to 120 vehs per hr at each of 6 refuelling pts or pack 135 tons from bulk daily or hold 9,000 tons of packed POL, with daily issues and receipts totalling 1,500 tons.
	Pet maint pl	One to every 3 pet pls op can fillers.
	Pet PL pl	One for every 3 booster stas on single or double line. On level ground this gives 24 miles of 4-in or 45 miles of 6-in pipe. On hilly ground it gives less. Daily throughout (16 hrs pump-ing) in a single 4-in pipe will be about 680 tons and in a single 6-in pipe about 1,300 tons
	Mob pet lab	Ops normally at pt of entry into the theatre and at pipehead.
	Pet eqpt pl	One per theatre, this unit holds and issues POL eqpt likely to be required by POL units and can carry out minor repairs.
	Port pl	See under sup units: this unit deals both with sups and POL.
	<u>Fire Fighting Units</u>	
	Army fire coy	There is likely to be one in the FMA and one in the RMA.
	Indep army fire bde	There is likely to be one in each small port or beach area.
	Fire boats	There is likely to be one in each small port of

ADM UNITS IN THE COMM Z (Cont)

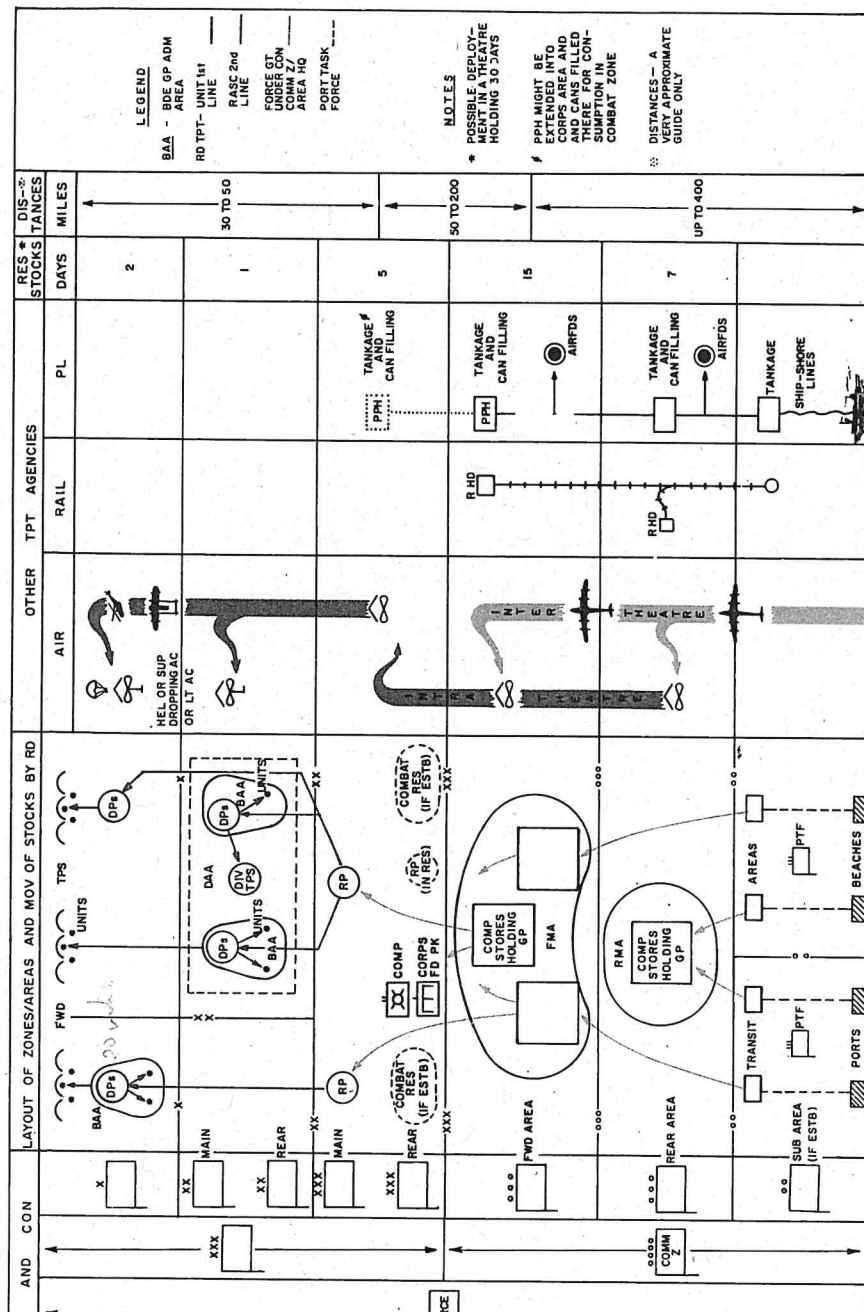
Svc	Unit	Remarks
(a)	(b)	(c)
<u>Med</u>	Fd amb FDS Fd hyg sec(s) CCS (casualty clearing station) Fd hyg coy Conv trg dep FTT Fd med coy Neuro surgical team Maxillo-facial team Ear, nose and throat team Ophthalmic team Spec treatment team Chest surgical team Burns team Mob dental team Mob pathological lab Mob hyg lab Fd dental lab FDC Malaria con coy Mob malaria fd lab Base malaria fd lab Gen hosp Amb train Hosp ship (temp) BMED BTU Central pathology lab Port det RAMC Med pl for MAC	One per force. One per force. One per area or sub-area. One per force. As required. As required, to provide 1% cover. Two per force. As required. One per force. One per force. One per force. One per force. One per force. As required. As required. One per force. One per force. One per force. One per force. To provide cover of one dental offr per 2,000 men. One per force } One per force } in malarious areas only. One per force } Provided on an agreed bed percentage of the force. On a scale of 2 per corps plus 20% res. Spec allotment. One per 150,000 tps. One per force. One per force. One per PTF. As required.
<u>Ord</u>	<u>Main Task</u> Fwd stores dep(s) Rear stores dep(s) Fwd veh dep(s) Rear veh dep(s) Fwd ammo dep(s) Rear ammo dep(s) GW coy(s) Tlr coy(s) Rear transit coy(s)	} Provide MT spares, clo and necessities, gen stores } and tech eqpts and spares. } } Provide A, B and C vehs. } Provide complete GM. Detail issue to units in the comm Z and various emergency roles. Provide pls to supervise handling of ord

ADM UNITS IN THE COMM Z (Cont)

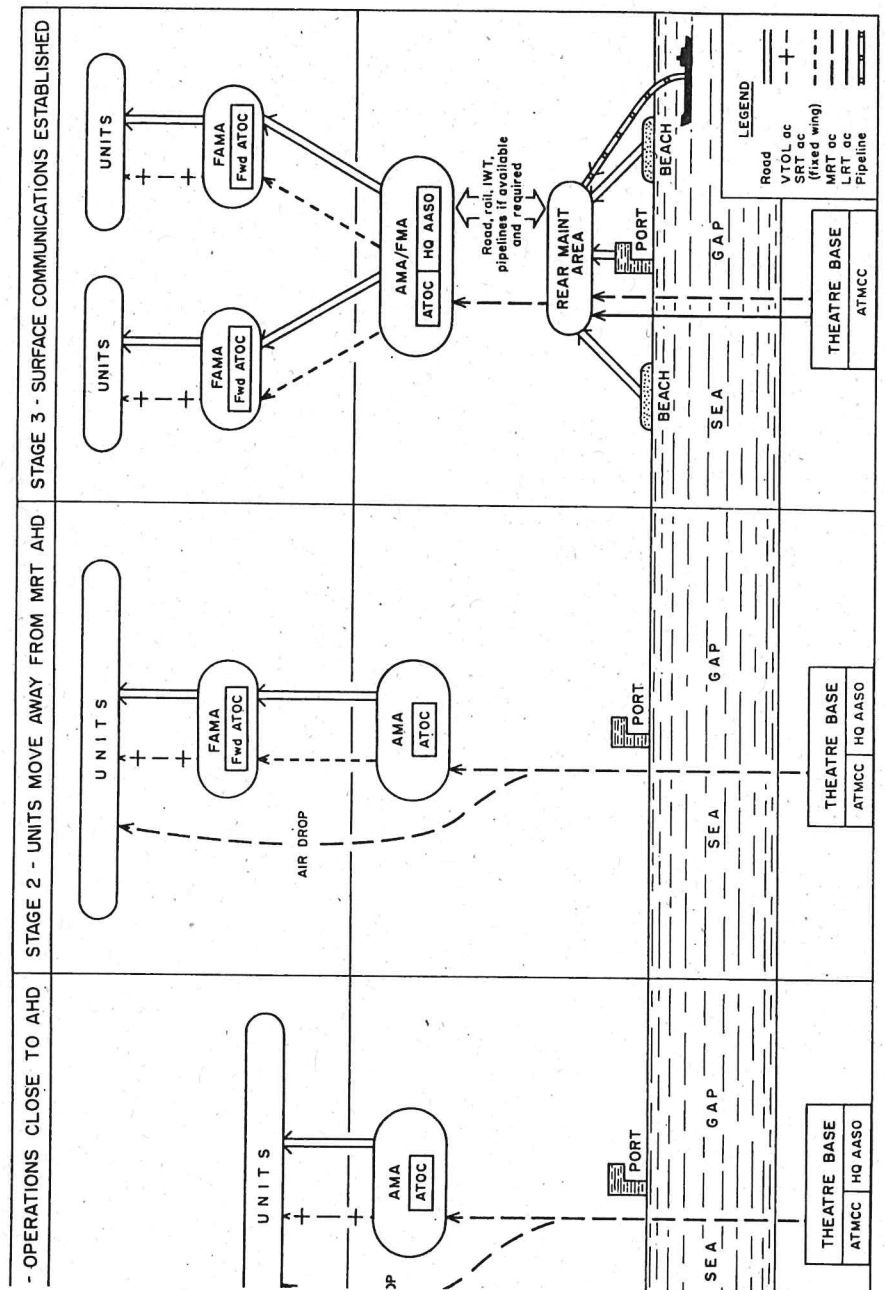
Svc	Unit	Remarks
(a)	(b)	(c)
<u>Ord</u> (cont)	<u>Ancillary Tasks</u>	
	Hosp laundry coy(s)	Launders hosp linen.
	Industrial gas pl(s)	Integrated in stores dep.
	Printing coy	Prints matter peculiar to the theatre.
	Sal coy	Sorts and conditions sal which can be put to further use in the war effort.
	Stores delivery coy	Ferries fwd operationally urgent.
	Eqpt decontamination coy	Decontamination urgently needed eqpt and stores.
	<u>Subsidiary Tasks</u>	
	Returned stores coy	Integrated in stores depts.
	Ammo repair pl	Integrated in ammo depts.
	Central purchase coy	Exploits local resources.
	<u>Air</u>	
	Air maint coy	Packs ord commodities for sup by air.
<u>EME</u>	Para hy dropping coy	Sps AB fms by holding, issuing and supervising the emp of hy drop platforms and crating eqpt.
	Air transit coy	Supervises handling of ord commodities at airfids and airstrips.
	Comm Z wksp	One per 50 miles of MSR.
	Gen tps wksp	One per fwd area of comm Z.
		One per rear area of comm Z.
	Tels wksp	One per force.
		One per comm Z sig regt.
	Med eqpt wksp	One per force.
	Eqpt assy coy	One per corps (not required for global war).
	Reclamation unit	One per two armd bde gps and one per three inf bde gps (not required in global war).
	<u>Army rec coy</u> comprising:	
	HQ	One per force.
	Hy pl	One per armd bde gp.
		One per corps for comm Z.
	Lt pl	One per two inf bde gps.
		One per corps for comm Z.
	RH evac pl	One per force and base rail or rd H.
	<u>Adv base wksp</u> comprising:	
	HQ adv base wksp	One per force.
	Wksp coy	One per two armd bde gps.
		One per four inf bde gps (not required for global war).

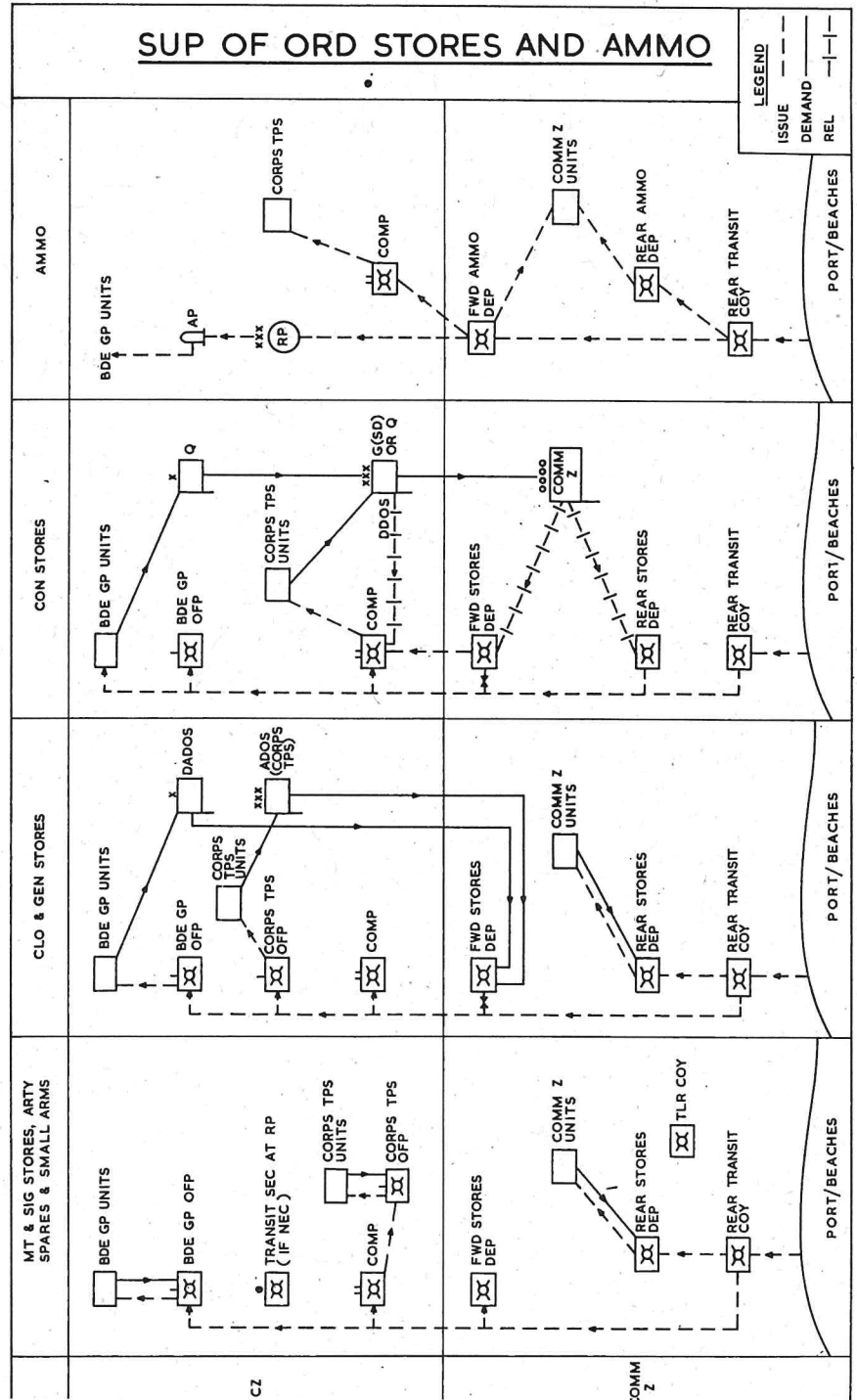
ADM UNITS IN THE COMM Z (Cont)

Svc (a)	Unit (b)	Remarks (c)
<u>EME</u> (cont)	Beach maint wksp Beach rec pl Att wksp and LADs	} As required for PTF. } One per certain maj units incl RASC coys.
<u>Pro</u>	Army pro coy GHQ pro coy WRAC pro coy PTF pro coy SIB secs Gd dog unit(s)	} One per force. } One per PTF. As required. As required.
<u>Edn</u>	Instructional unit RAEC Info and news sheet teams	As required. As required.
<u>MC</u>	MC regts RE (HQ and three sqns)	As required.
<u>Pay</u>	Area cash office(s)  Comd pay office Bulk cash office Base clearing house	Loc at ports and in comm Z as required. May be loc in the fwd area of the comm Z to carry out duties on behalf of the comd pnr. One per force. One per force (if estb). One per force.
<u>Courier and Postal</u>	Comd postal dep Postal units types B, D and G	One per force. As required in comm Z and PTF.
<u>PL</u>	HQ pnr gp(s)  Pnr coy(s)  Pnr civ lab units (PCLUs) (comm Z and mob)	As required. Can comd between 5 and 8 pnr coys. As required. Comds between 5 and 12 pnr secs. As required to recruit and adm local lab.
<u>VR</u>	Tac dog tp  Mob VR sec(s)  VR conducting sec  Vet hosp  Remount dep  Remount purchase commission Vet stores dep Livestock dep  Meat insp sec(s)  War dog trg unit (WDTU)	Provides dogs and handlers for use in CZ eg mine detection, inf ptls. Replaces unfit animals and distr of vet stores. Reps mob VR secs of sick animals and replaces them with fit animals. One per force based on 10% of animals in the force. One per force. Holds res of animals up to 30% of fmn and unit animal str. One per force. Requisition of animals. One per force. One per force. Provides conducting parties, vaccination teams and supervisory staff for livestock before slaughter. As required. Carry out ante and post mortem examination of livestock. One per force.



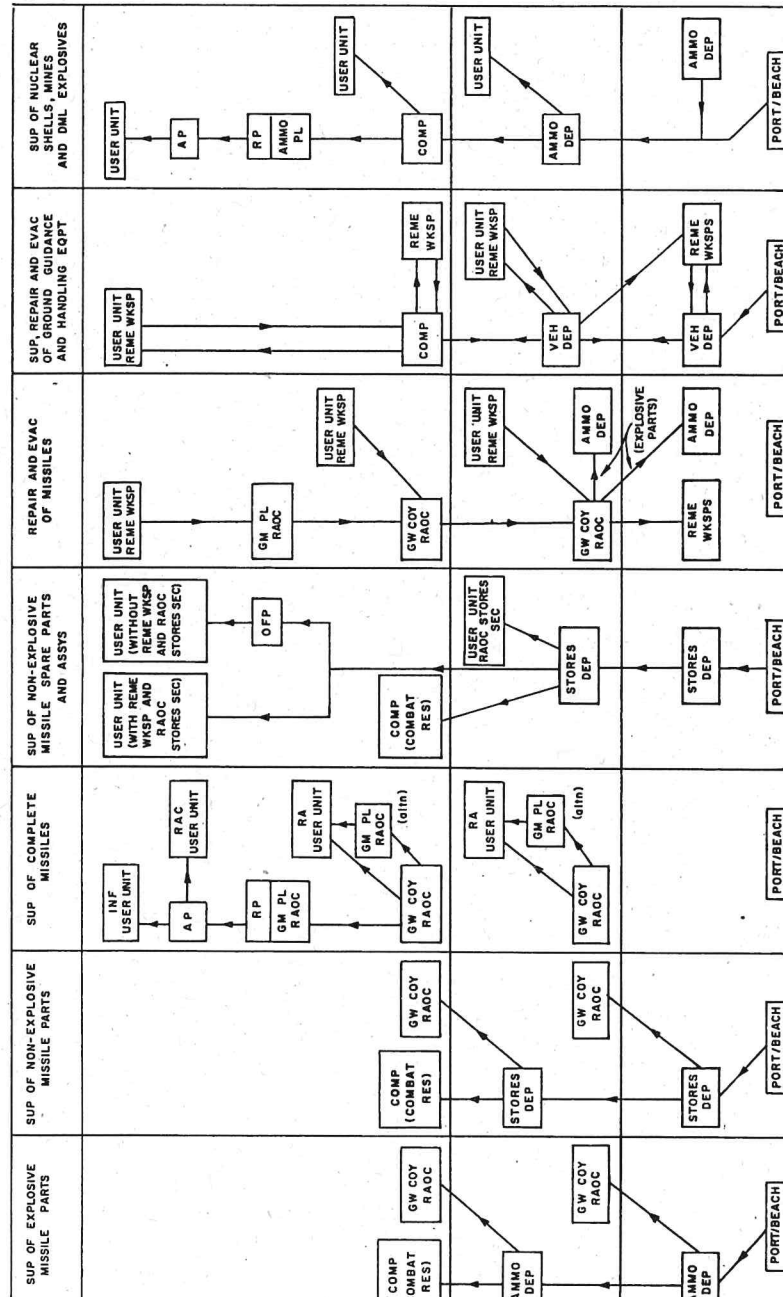
# A LOGISTIC SYSTEM BASED ON AIR SUPPLY







LOG SP FOR GMS, FREE FLT RKTS AND NUCLEAR  
AMMO IN A THEATRE OF OPS



E- SHOULD IT BE NEC FOR A GW REGT TO CARRY A RES OF COMPLETE MISSILES IN EXCESS OF NORMAL FIRST LINE. A SEC OF A GW COY MAY BE ATT TO THE REGT TO HOLD THIS RES

## LAYOUT OF METHODS OF MOV FOR COMPLETE MISSILE AND PARTS

