

Whitecleave Quarry Ecological Mitigation Schedule	2012																																																
Month	Feb			Mar			Apr			May			Jun			Jul			Aug			Sep			Oct			Nov			Dec																		
Week Commencing (Monday)	06	13	20	27	05	12	19	26	02	09	16	23	30	07	14	21	28	04	11	18	25	02	09	16	23	30	06	13	20	27	03	10	17	24	01	08	15	22	29	05	12	19	26	03	10	17	24	31	
ECOLOGICAL MITIGATION (compliant or optimum periods are highlighted)																																																	
Dormouse Mitigation Licence Preparation & Application to NE																																																	
Dormouse nest boxes and nest tubes installed																																																	
Dormouse translocation (under terms of licence)																																																	
Dolerite spur tree/shrub removal (to avoid nesting birds)																																																	
Blasting period (to avoid disturbance to hibernating bats)																																																	
Mitigation and Monitoring Plan Preparation																																																	
Environmental Permit Application																																																	
Tree/shrub planting (best practice for highest soil moisture conditions)																																																	
Bramble/bracken clearance from SSSI tree planting zone																																																	
Potters Wood Caves hibernating bat inspection																																																	
Potters Wood Caves blasting vibration monitoring																																																	

Continued.....	2013																																																																																																																																																																																																																																																																																																																																																																																																																																																																																																																																																																																																																																																																																																																																																																																																																																																																																																																																																																																																																																																																																																																																																																																																																																																																																																																																																																																																																																															
----------------	------	--	--	--	--	--	--	--	--	--	--	--	--	--	--	--	--	--	--	--	--	--	--	--	--	--	--	--	--	--	--	--	--	--	--	--	--	--	--	--	--	--	--	--	--	--	--	--	--	--	--	--	--	--	--	--	--	--	--	--	--	--	--	--	--	--	--	--	--	--	--	--	--	--	--	--	--	--	--	--	--	--	--	--	--	--	--	--	--	--	--	--	--	--	--	--	--	--	--	--	--	--	--	--	--	--	--	--	--	--	--	--	--	--	--	--	--	--	--	--	--	--	--	--	--	--	--	--	--	--	--	--	--	--	--	--	--	--	--	--	--	--	--	--	--	--	--	--	--	--	--	--	--	--	--	--	--	--	--	--	--	--	--	--	--	--	--	--	--	--	--	--	--	--	--	--	--	--	--	--	--	--	--	--	--	--	--	--	--	--	--	--	--	--	--	--	--	--	--	--	--	--	--	--	--	--	--	--	--	--	--	--	--	--	--	--	--	--	--	--	--	--	--	--	--	--	--	--	--	--	--	--	--	--	--	--	--	--	--	--	--	--	--	--	--	--	--	--	--	--	--	--	--	--	--	--	--	--	--	--	--	--	--	--	--	--	--	--	--	--	--	--	--	--	--	--	--	--	--	--	--	--	--	--	--	--	--	--	--	--	--	--	--	--	--	--	--	--	--	--	--	--	--	--	--	--	--	--	--	--	--	--	--	--	--	--	--	--	--	--	--	--	--	--	--	--	--	--	--	--	--	--	--	--	--	--	--	--	--	--	--	--	--	--	--	--	--	--	--	--	--	--	--	--	--	--	--	--	--	--	--	--	--	--	--	--	--	--	--	--	--	--	--	--	--	--	--	--	--	--	--	--	--	--	--	--	--	--	--	--	--	--	--	--	--	--	--	--	--	--	--	--	--	--	--	--	--	--	--	--	--	--	--	--	--	--	--	--	--	--	--	--	--	--	--	--	--	--	--	--	--	--	--	--	--	--	--	--	--	--	--	--	--	--	--	--	--	--	--	--	--	--	--	--	--	--	--	--	--	--	--	--	--	--	--	--	--	--	--	--	--	--	--	--	--	--	--	--	--	--	--	--	--	--	--	--	--	--	--	--	--	--	--	--	--	--	--	--	--	--	--	--	--	--	--	--	--	--	--	--	--	--	--	--	--	--	--	--	--	--	--	--	--	--	--	--	--	--	--	--	--	--	--	--	--	--	--	--	--	--	--	--	--	--	--	--	--	--	--	--	--	--	--	--	--	--	--	--	--	--	--	--	--	--	--	--	--	--	--	--	--	--	--	--	--	--	--	--	--	--	--	--	--	--	--	--	--	--	--	--	--	--	--	--	--	--	--	--	--	--	--	--	--	--	--	--	--	--	--	--	--	--	--	--	--	--	--	--	--	--	--	--	--	--	--	--	--	--	--	--	--	--	--	--	--	--	--	--	--	--	--	--	--	--	--	--	--	--	--	--	--	--	--	--	--	--	--	--	--	--	--	--	--	--	--	--	--	--	--	--	--	--	--	--	--	--	--	--	--	--	--	--	--	--	--	--	--	--	--	--	--	--	--	--	--	--	--	--	--	--	--	--	--	--	--	--	--	--	--	--	--	--	--	--	--	--	--	--	--	--	--	--	--	--	--	--	--	--	--	--	--	--	--	--	--	--	--	--	--	--	--	--	--	--	--	--	--	--	--	--	--	--	--	--	--	--	--	--	--	--	--	--	--	--	--	--	--	--	--	--	--	--	--	--	--	--	--	--	--	--	--	--	--	--	--	--	--	--	--	--	--	--	--	--	--	--	--	--	--	--	--	--	--	--	--	--	--	--	--	--	--	--	--	--	--	--	--	--	--	--	--	--	--	--	--	--	--	--	--	--	--	--	--	--	--	--	--	--	--	--	--	--	--	--	--	--	--	--	--	--	--	--	--	--	--	--	--	--	--	--	--	--	--	--	--	--	--	--	--	--	--	--	--	--	--	--	--	--	--	--	--	--	--	--	--	--	--	--	--	--	--	--	--	--	--	--	--	--	--	--	--	--	--	--	--	--	--	--	--	--	--	--	--	--	--	--	--	--	--	--	--	--	--	--	--	--	--	--	--	--	--	--	--	--	--	--	--	--	--	--	--	--	--	--	--	--	--	--	--	--	--	--	--	--	--	--	--	--	--	--	--	--	--	--	--	--	--	--	--	--	--	--	--	--	--	--	--	--	--	--	--	--	--	--	--	--	--	--	--	--	--	--	--	--	--	--	--	--	--	--	--	--	--	--	--	--	--	--	--	--	--	--	--	--	--	--	--	--	--	--	--	--	--	--	--	--	--	--	--	--	--	--	--	--	--	--	--	--	--	--	--	--	--	--	--	--	--	--	--	--	--	--	--	--	--	--	--	--	--	--	--	--	--	--	--	--	--	--	--	--	--	--	--	--	--	--	--	--	--	--	--	--	--	--	--	--	--	--	--	--	--	--	--	--	--	--	--	--	--	--	--	--	--	--	--	--	--	--	--	--	--	--	--	--	--	--	--	--	--	--	--	--	--	--	--	--	--	--	--	--	--	--	--	--	--	--	--	--	--	--	--	--	--	--	--	--	--	--	--	--	--	--	--	--	--	--	--	--	--	--	--	--	--	--	--	--	--	--	--	--	--	--	--	--	--	--	--	--	--	--	--	--	--	--	--	--	--	--	--	--	--	--	--	--	--	--	--	--	--	--	--	--	--	--	--	--	--	--	--	--	--	--	--	--	--	--	--	--	--	--	--	--	--	--	--	--	--	--	--	--	--	--	--	--	--	--	--	--	--	--	--	--	--	--	--	--	--	--	--	--	--	--	--	--	--	--	--	--	--	--	--	--	--	--	--	--	--	--	--	--	--	--	--	--	--	--	--	--	--	--	--	--	--	--	--	--	--	--	--	--	--	--	--	--	--	--	--	--	--	--	--	--	--	--	--	--	--	--	--	--	--	--	--	--	--	--	--	--	--	--	--	--	--	--	--	--	--	--	--	--	--	--	--	--	--	--	--	--	--	--	--	--	--	--	--	--	--	--	--	--	--	--	--	--	--	--	--	--	--	--	--	--	--	--	--	--	--	--	--	--	--	--	--	--	--	--	--	--	--	--	--	--	--	--	--	--	--	--	--	--	--	--

Confirmed Mitigation and Time Period

Mitigation and timing to be confirmed with Natural England

This schedule assumes planning permission is granted in April 2012 and ecology mitigation begins in 2012

Version 3: Issued 17/04/12

ALL PROPOSALS SHOWN ARE SUBJECT TO LANDOWNER AND NATURAL ENGLAND APPROVAL.

FOR ADDITIONAL AREAS OF OFF-SITE WOODLAND MITIGATION PLANTING REFER TO URS SCOTT WILLSON DRAWING NUMBER D134633-400

PLANTING

All plants and planting to comply with the requirements of all current / relevant British Standard specifications including BS 5356: Part 1 (1992), Part 2 (1990) and Part 4 (1984) and BS 5326 (1975) where applicable, BS 4428 (1989) and the BALI / LI / Nursery Trade Tender Document (5th Edition 1986). All plants to be supplied in accordance with the planting schedule.

TREE PLANTING (AREAS 1, 2 & 3)  
Whips within these areas to be planted at a density of one whip per 3m<sup>2</sup>. Allow for the use of container grown stock during the period 1 April to 31 October, and field grown stock from 1 November to 31 March.

PLANT MATERIAL TREATMENT

NB All to be British grown stock and fully hardened off.

Root Dip - Proprietary Root Dip applied to all bare rooted stock (1) at time of lifting at nursery and (2) prior to planting.

AntiDesiccant - Proprietary anti-desiccant to be applied to foliage of all containerised/roadable material in leaf, specimen containers and evergreens etc. (1) prior to transportation and (2) during any delay in planting.

Pruning - Allow for pruning of all deciduous trees and shrubs by 1/3rd following planting at Landscape Architects direction or as indicated in the planting schedule.

Tree Stakes & Ties - All trees to be staked. Stakes to be pressure treated, round, smooth and peeled larch or Chestnut, not less than 75mm in diameter & fitted with an adjustable type rubber tree tie/space. (Maximum 600mm Ht. exposed stake above ground level).

Rabbit guards to be fitted to all planted stock.

TOPSOIL REQUIREMENTS  
To BS 3882 (2007) as qualified by full contraed specification. All areas shall be cultivated to a minimum depth of 150mm. Full weed, rubbish and stones over 38mm gauge shall be removed. Earth to be rolled as required and raked in two directions.

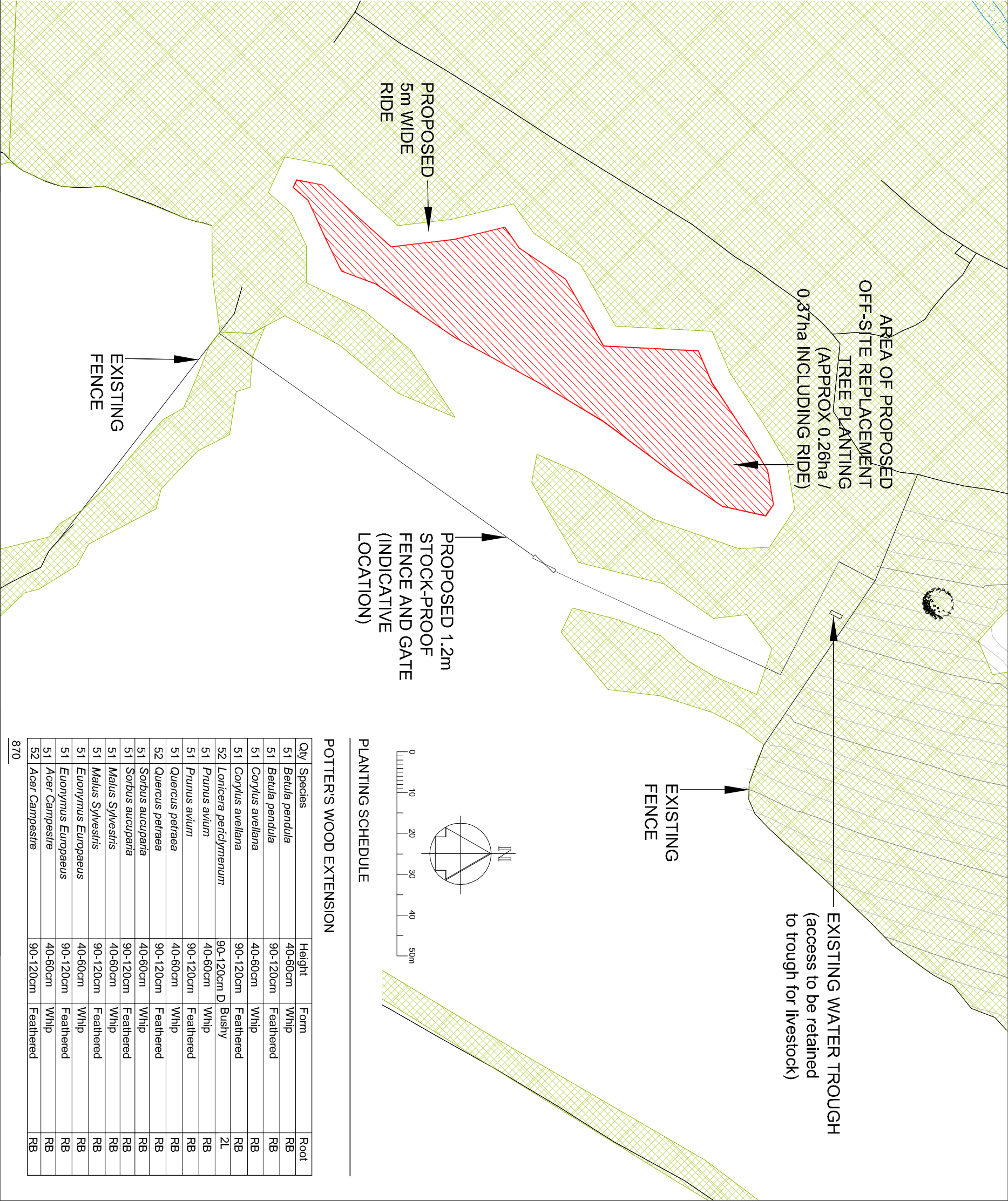
Whip planting - 300 dia. x 300mm depth  
Feathered planting - 600 dia. x 600mm depth

Where necessary increase tree pit dimensions to ensure that tree pits are at least 75mm deeper and 150mm wider than rootball. Break up bottom of pits to a depth of 100mm. Compacted glazed sides of pits should be roughened.

TOPSOIL IMPROVEMENTS

Applied to all newly planted areas, to manufacturers recommendations where appropriate.

- 1) Incorporate 75mm depth of soil conditioner into topsoil during cultivation.
- 2) Incorporate Alginate (Seamure Soilbuilder) Soil Improver approx. 1.5KG/m<sup>3</sup> to tree pit backfill and 75g/m<sup>2</sup> to shrub beds.
- 3) Incorporate Emag (6:20:10) granular fertilizer approx 40g/m<sup>2</sup> to tree-pit backfill and 100g/m<sup>2</sup> to structural/oramental beds.
- 4) Watering - supply minimum 54 litres/tree and 4.5 litres/shrub at planting.
- 5) Mulch - apply a 75mm depth 50-100mm grade bark mulch, 1m radius around all whips and feathered trees. Ornamental Bark to consist of predominantly matured British Pine Bark with an even nominal particle size distribution of 5-35mm with 0% dust and fines and less than 5% wood content. The product shall be pest, disease and weed free and not have been treated with Melihyl Bromide or any additives. The product shall have been tested in accordance with the requirements of BS 4790: 1987, for fire resistance. NB - Watering to be carried out prior to application of bark mulch.



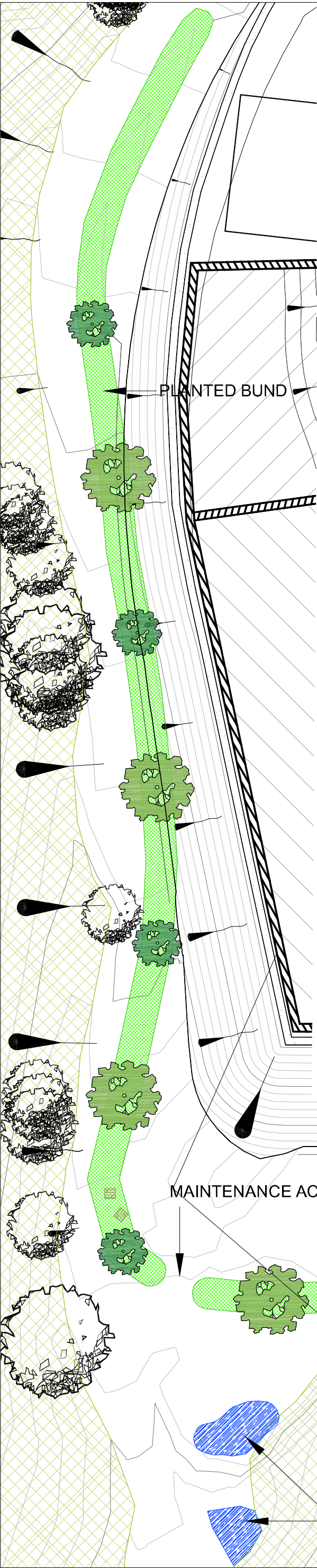
PLANTING SCHEDULE

POTTER'S WOOD EXTENSION

Qty	Species	Height	Form	Root
51	<i>Betula pendula</i>	40-60cm	Whip	RB
51	<i>Betula pendula</i>	90-120cm	Feathered	RB
51	<i>Corylus avellana</i>	40-60cm	Whip	RB
51	<i>Corylus avellana</i>	90-120cm	Feathered	RB
52	<i>Lonicera periclymenum</i>	90-120cm D	Bushy	2L
51	<i>Prunus avium</i>	40-60cm	Whip	RB
51	<i>Prunus avium</i>	90-120cm	Feathered	RB
51	<i>Quercus petraea</i>	40-60cm	Whip	RB
52	<i>Quercus petraea</i>	90-120cm	Feathered	RB
51	<i>Sorbus aucuparia</i>	40-60cm	Whip	RB
51	<i>Sorbus aucuparia</i>	90-120cm	Feathered	RB
51	<i>Malus sylvestris</i>	40-60cm	Whip	RB
51	<i>Malus sylvestris</i>	90-120cm	Feathered	RB
51	<i>Euonymus europaeus</i>	40-60cm	Whip	RB
51	<i>Euonymus europaeus</i>	90-120cm	Feathered	RB
51	<i>Acer Campestre</i>	40-60cm	Whip	RB
52	<i>Acer Campestre</i>	90-120cm	Feathered	RB

870

Species list updated per Natural England request		Job Title	
Revision Details		WHITECLEAVE QUARRY	
By	Date	Suffk	
Check			
Drawing Status		POTTER'S WOOD EXTENSION	
PLANNING		Drawing Title	
		Rev	
APPENDIX 2		URS Infrastructure & Environment UK Limited	
Scale at A3		Map/Tower House, Armdale Way, Plymouth.	
1:1000		T +44 (0)1752 676700	
Drawn		Approved	
LB		SG	
Stage 1 check		Stage 2 check	
LB		SG	
		Originated	
		Date	
		10.02.2012	
		www.ursglobal.com	
		URS	



PLANTING SCHEDULE

PROPOSED HEDGEBANK (BUND TO BAT FLIGHT PATH)

Qty	Species	Height	Form	Root	% Mix
75	<i>Corylus avellana</i>	40-60cm	Whip	RB	10%
265	<i>Crataegus monogyna</i>	40-60cm	Whip	RB	35%
35	<i>Ilex aquifolium</i>	40-60cm	Leader and laterals	2L	5%
75	<i>Rosa canina</i>	40-60cm	Branched	2L	10%
75	<i>Sorbus aucuparia</i>	40-60cm	Whip	RB	10%
75	<i>Malus Sylvestris</i>	90-120cm	Feathered	RB	10%
75	<i>Euonymus Europaeus</i>	90-120cm	Feathered	RB	10%
75	<i>Acer Campestre</i>	90-120cm	Feathered	RB	10%
750					

ALL PROPOSALS SHOWN ARE SUBJECT TO LANDOWNER AND NATURAL ENGLAND APPROVAL.

FOR ADDITIONAL AREAS OF OFF-SITE WOODLAND MITIGATION PLANTING REFER TO URS SCOTT WILSON DRAWING NUMBER D134633-400 .

EXISTING TREES AND SHRUBS

Any surgery required shall be in accordance with BS 3998 'Recommendations for Tree Works' and shall require the prior approval of the Landscape Architect.

Avoid damage to branches, trunks and roots of trees. All existing trees & shrubs to be retained are subject to BS 5837 (2005) 'Trees in relation to Construction - Recommendations', and should be fully fenced off, prior to the commencement of any works, in accordance with protection drawings and recommendations following advice from a qualified arboricultural consultant.

No storage of materials, disposal of rubbish, site fires, spillage of oil and chemicals, ground compaction, excavation or changes in level shall be carried out within existing tree / hedge canopies.

PLANTING

All plants and planting to comply with the requirements of all current / relevant British Standard specifications including BS 3936: Part 1 (1992), Part 2 (1990) and Part 4 (1984) and BS 5326 (1975) where applicable, BS 4428 (1989) and the BALI / LI / Nursery Trade Tender Document (5th Edition 1986). All plants to be supplied in accordance with the planting schedule.

PROPOSED HEDGEBANK (BUND)

Whips proposed along the bund are to be planted at a density of 1/m² in a double staggered row. Where feasible, young transplanted stock from the woodland to be removed is to be planted at a density of 1/20 lin.m. To be irrigated by a trickle pipe laid along the top of the bank - to be fed by an existing, reliable water supply.

-Trees to be grown and supplied in accordance with National Plant Specification.

-Trees to be transplanted and planted in accordance with Horticultural Trades Association Handling and Establishment of Landscape Plants.

-Defective or failing trees being replaced for a defects period of five years post transplanting.

POND PLANTING

Floating / submersible baskets and pots installed and secured per manufacturers recommendations.

Proportions of plant mixes and sizes to be specified by an ecological specialist.

PLANT MATERIAL TREATMENT

NB All to be British grown stock and fully hardened off.

Root Dip - Proprietary Root Dip applied to all bare rooted stock (1) at time of lifting at nursery and (2) prior to planting.

Anti-Dessicant - Proprietary anti-dessicant to be applied to foliage of all containerised/rootballed material in leaf, specimen conifers and evergreens etc. (1) prior to transportation and (2) during any delay in planting.

Pruning - Allow for pruning of all deciduous trees and shrubs by 1/3rd following planting at Landscape Architects direction or as indicated in the planting schedule.

Tree Stakes & Ties - All trees to be staked. Stakes to be pressure treated, round, smooth and peeled Larch or Chestnut, not less than 75mm in diameter & fitted with an adjustable type rubber tree tie/spacer. (Maximum 600mm HL exposed stake above ground level).

SITE WON GROWING MEDIUM TO BE USED BY CLIENT. THE FOLLOWING TOPSOIL SPECIFICATION IS RECOMMENDED BEST PRACTICE.

TOPSOIL REQUIREMENTS

To BS 3882 (2007) as qualified by full contract specification. All areas shall be cultivated to a minimum depth of 150mm. Full weed, rubbish and stones over 38mm gauge shall be removed. Earth to be rolled as required and raked in two directions.

Whip planting - 300 dia. x 300mm depth  
Feathered planting - 600 dia. x 600mm depth

Where necessary increase tree pit dimensions to ensure that tree pits are at least 75mm deeper and 150mm wider than rootball. Break up bottom of pits to a depth of 100mm. Compacted glazed sides of pits should be roughened.

TOPSOIL IMPROVEMENTS

Applied to all newly planted areas, to manufacturers recommendations where appropriate.

- 1) Incorporate 75mm depth of soil conditioner into topsoil during cultivation.
- 2) Incorporate Algisure (Seanure Soilbuilder) Soil Improver approx. 1.5KG/m³ to tree pit backfill and 75g/m² to shrub beds.
- 3) Incorporate Enmag (6:20:10) granular fertilizer approx 400g/m³ to tree-pit backfill and 100g/m² to structural/ornamental beds.
- 4) Watering - supply minimum 54 litres/tree and 4.5 litres/shrub at planting.
- 5) Mulch - apply a 75mm depth 50-100mm grade bark mulch, 1m radius around all whips and feathered trees. Ornamental Bark to consist of predominantly matured British Pine Bark with an even nominal particle size distribution of 5-35mm with 0% dust and fines and less than 5% wood content. The product shall be pest, disease and weed free and not have been treated with Methyl Bromide or any additives. The product shall have been tested in accordance with the requirements of BS 4790: 1987, for fire resistance. NB - Watering to be carried out prior to application of bark mulch.

POND AND SWALE PLANTING MIX

POND EDGE PLANTING

Species
<i>Caltha palustris</i>
<i>Mentha aquatica</i>
<i>Myosotis scorpioides</i>
<i>Ranunculus flammula</i>
<i>Ranunculus sceleratus</i>
<i>Veronica beccabunga</i>

MARGINAL AQUATIC PLANTING

Species
<i>Caltha palustris</i>
<i>Filipendula ulmaria</i>
<i>Iris pseudacorus</i>
<i>Lycopus europaeus</i>
<i>Lythrum salicaria</i>
<i>Myosotis scorpioides</i>
<i>Phalaris arundinacea</i>
<i>Ranunculus</i>
<i>Ranunculus sceleratus</i>
<i>Valeriana officinilis</i>
<i>Veronica beccabunga</i>

POND (AQUATIC) PLANTING

Species
<i>Callitriche stagnalis</i>
<i>Glycerai fluitans</i>
<i>Polygonum amphibium</i>
<i>Potamogeton crispus</i>

Species list updated per Natural England request	MO / SL	17.04.12	A
Revision Details	By	Check	Date

Job Title	WHITECLEAVE QUARRY
-----------	--------------------

Drawing Title	PLANTED BUND (HEDGEBANK)
---------------	--------------------------

Scale at A3	1:500
Drawn	LB
Check	SG
Approved	SG
Originated	Date
	10.02.2012

URS Infrastructure & Environment UK Limited

Mayflower House,  
Armada Way,  
Plymouth,  
Devon, PL1 1LD  
T +44 (0)1752 676700  
F +44 (0)870 238 6023

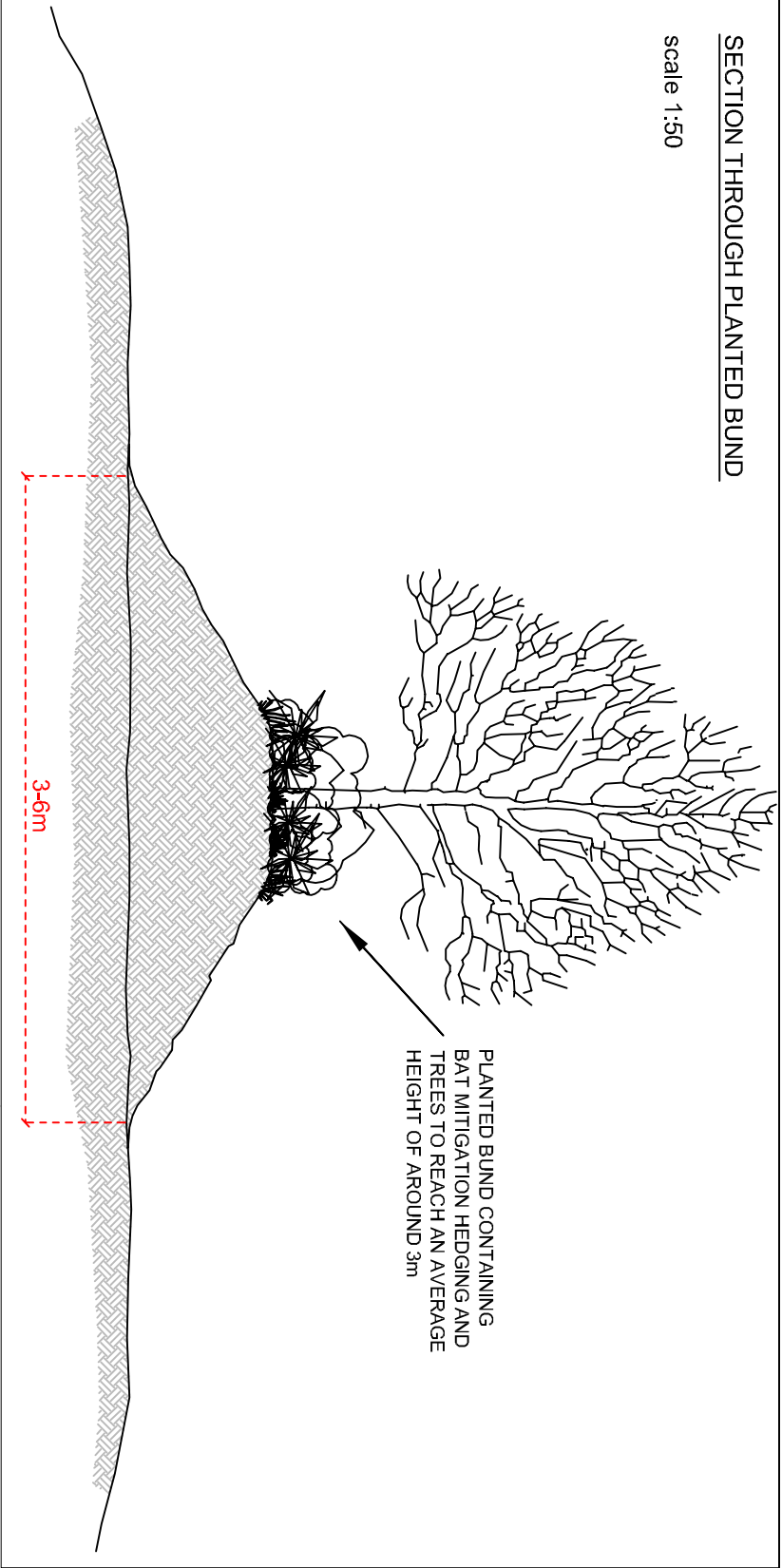
www.ursglobal.com



Figure	APPENDIX 3
--------	------------

SECTION THROUGH PLANTED BUND

scale 1:50

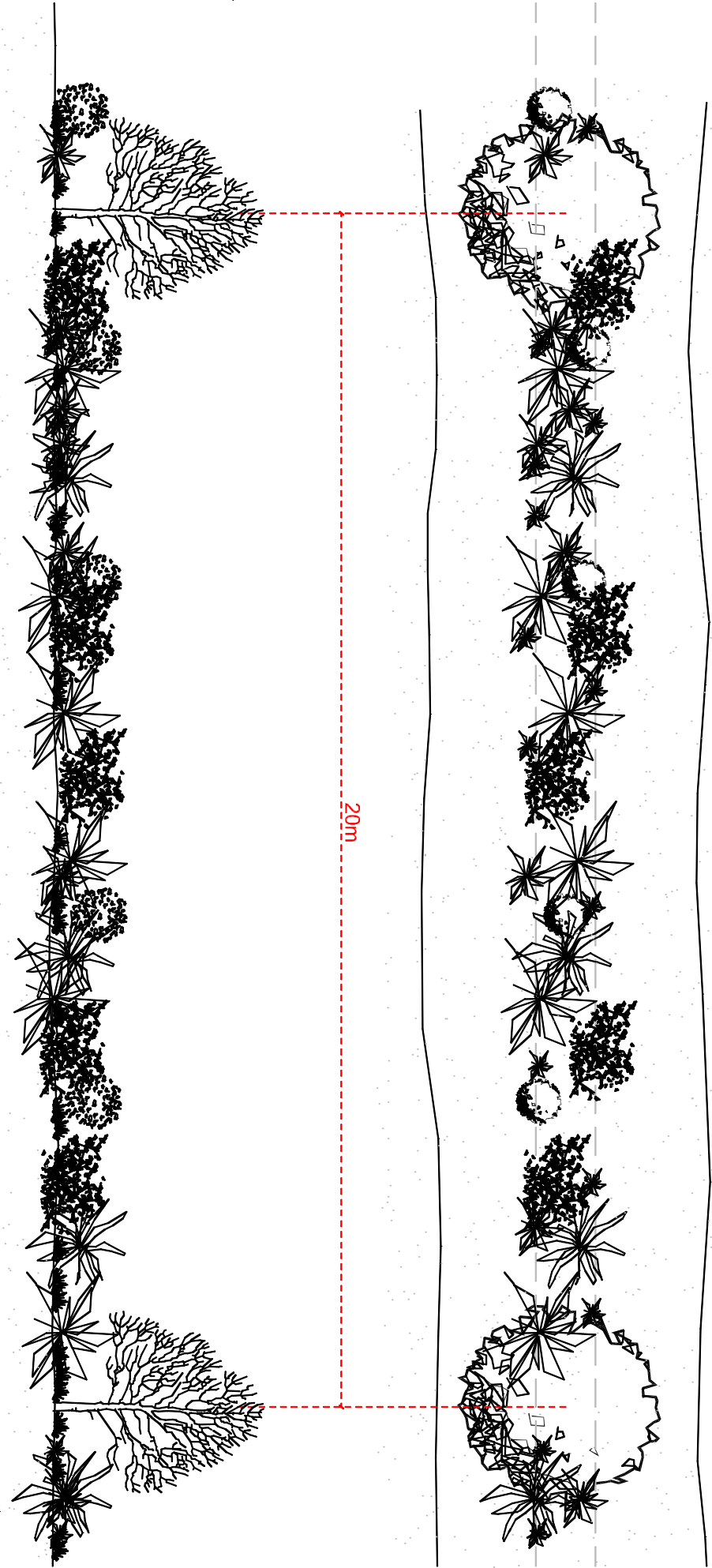


THIS DRAWING IS AN EXTRACT  
FROM SUBMITTED  
ENVIRONMENTAL STATEMENT,  
FIGURE 7.3

REFER TO APPENDIX 3 FOR  
FULL PLANTING SPECIFICATION

PLAN OF PLANTED BUND

scale 1:100



LONG SECTION THROUGH  
PLANTED BUND

scale 1:100

This document has been prepared in accordance with the scope of Scott Wilson's appointment with its client and is subject to the terms of that appointment. Scott Wilson accepts no liability for any use of this document other than by its client and only for the purposes for which it was prepared and provided. Only written dimensions shall be used. © Scott Wilson Ltd 2010

Drawing date revised				M/O / SL	17.04.12	A
Revision Details				By / Check	Date	Suffix

Job Title  
**WHITECLEAVE  
QUARRY**

Drawing Title  
**BAT MITIGATION  
PLANTED BUND  
INDICATIVE PLAN AND  
SECTIONS**

<b>APPENDIX 4</b>			
Scale at A3 : AS SHOWN			
Drw	LB	App	SL
Chk		Date	16.05.11
		Date	17.04.12

ALL PROPOSALS SHOWN ARE SUBJECT TO LANDOWNER AND NATURAL ENGLAND APPROVAL.

FOR ADDITIONAL AREAS OF OFF-SITE WOODLAND MITIGATION PLANTING REFER TO URS SCOTT WILSON DRAWING NUMBER D134633-400 .

EXISTING TREES AND SHRUBS

Any surgery required shall be in accordance with BS 3399. Recommendations for Tree Works and shall require the prior approval of the Landscape Architect.

Avoid damage to branches, trunks and roots of trees. All existing trees & shrubs to be retained are subject to BS 5837 (2005) 'Trees in relation to Construction - Recommendations', & should be fully fenced off, prior to the commencement of any works. In accordance with protection drawings and recommendations following advice from a qualified arboricultural consultant.

No storage of materials, disposal of rubbish, site fires, spillage of oil and chemicals, ground compaction, excavation or changes in level shall be carried out within existing tree / hedge canopies.

PLANTING

All plants and planting to comply with the requirements of all current / relevant British Standard specifications including BS 3396: Part 1 (1992), Part 2 (1990) and Part 4 (1994) and BS 5328 (1975) where applicable, BS 4428 (1998) and the BAUL / LI / Nursery Trade Tender Document (5th Edition 1985). All plants to be supplied in accordance with the planting schedule.

PROPOSED HEDGEBANK (BUND)

Whips proposed along the bund are to be planted at a density of 1/m<sup>2</sup>. Where feasible, young transplanted stock from the woodland to be removed is to be planted at a density of 1/20 lin. m. To be irrigated by a trickle pipe laid along the top of the bank, to be fed by an existing, reliable water supply.

Natural Plant Specification.

- Trees to be grown and supplied in accordance with
- Trees to be transplanted and planted in accordance with Horticultural Trades Association Handling and Establishment of Landscape Plants.
- Defective or failing trees being replaced for a defects period of five years post transplanting.

POND PLANTING

Floating / submersible baskets and pots installed and secured per manufacturers recommendations.

Proportions of plant mixes and sizes to be specified by an ecological specialist.

PLANT MATERIAL TREATMENT

NB All to be British grown stock and fully hardened off.

Root Dip - Proprietary Root Dip applied to all bare rooted stock (1) at time of lifting at nursery and (2) prior to planting.

Anti-Desiccant - Proprietary antidesiccant to be applied to foliage of all containerised/roottailed material in leaf, specimen containers and evergreens etc. (1) prior to transportation and (2) during any delay in planting.

Pruning - Allow for pruning of all deciduous trees and shrubs by 1/3rd following planting at Landscape Architects direction or as indicated in the planting schedule.

Tree Stakes & Ties - All trees to be staked. Stakes to be pressure treated, round, smooth and peeled Larch or Chestnut, not less than 75mm in diameter & fitted with an adjustable type rubber tree tie/space. (Maximum 600mm Ht. exposed stake above ground level).

SITE WON GROWING MEDIUM TO BE USED BY CLIENT. THE FOLLOWING TOPSOIL SPECIFICATION IS RECOMMENDED BEST PRACTICE.

TOPSOIL REQUIREMENTS

To BS 3882 (2007) as qualified by full contract specification. All areas shall be cultivated to a minimum depth of 150mm. Full weed, rubbish and stones over 36mm gauge shall be removed. Earth to be rolled as required and raked in two directions.

Whip planting - 300 dia. x 300mm depth  
Feathered planting - 600 dia. x 600mm depth

Where necessary increase tree pit dimensions to ensure that tree pits are at least 75mm deeper and 150mm wider than rootball. Break up bottom of pits to a depth of 100mm. Compacted glazed sites of pits should be roughened.

TOPSOIL IMPROVEMENTS

Applied to all newly planted areas, to manufacturers recommendations where appropriate.

- 1) Incorporate 75mm depth of soil conditioner into topsoil during cultivation.
- 2) Incorporate Alghure (Seamure Soilboulder) Soil Improver approx. 1.3KG/m<sup>3</sup> to tree pit backfill and 75g/m<sup>2</sup> to shrub beds.
- 3) Incorporate Enmag (6.20:10) granular fertilizer approx. 400g/m<sup>3</sup> to tree-pit backfill and 100g/m<sup>2</sup> to structural/ornamental beds.
- 4) Watering - supply minimum 54 litres/tree and 4.5 litres/shrub at planting.
- 5) Mulch - apply a 75mm depth 50-100mm grade bark mulch, 1m radius around all whips and feathered trees. Ornamental Bark to consist of predominantly mulched British Pine Bark with an even nominal particle size distribution of 5-35mm with 0% dust and fines and less than 5% wood content. The product shall be pest, disease and weed free and not have been treated with Methyl Bromide or any additives. The product shall have been tested in accordance with the requirements of BS 4790: 1987, for fire resistance. NB - Watering to be carried out prior to application of bark mulch.

PLANTING SCHEDULE

PROPOSED HEDGEBANK (BUND TO PERIMETER SWALE)

Qty	Species	Height	Form	Root	% Mix
88	<i>Acer campestre</i>	40-60cm	Whip	RB	10%
133	<i>Corylus avellana</i>	40-60cm	Whip	RB	15%
310	<i>Crataegus monogyna</i>	40-60cm	Whip	RB	35%
133	<i>Punus spinosa</i>	40-60cm	Branched	2L	15%
133	<i>Rosa canina</i>	40-60cm	Branched	2L	15%
88	<i>Sorbus aucuparia</i>	40-60cm	Whip	RB	10%

POND AND SWALE PLANTING MIX

POND EDGE PLANTING

Species
<i>Callitha palustris</i>
<i>Mentha aquatica</i>
<i>Myosotis scorpioides</i>
<i>Ranunculus flammula</i>
<i>Ranunculus sceleratus</i>
<i>Veronica beccabunga</i>

MARGINAL AQUATIC PLANTING

Species
<i>Callitha palustris</i>
<i>Filipendula ulmaria</i>
<i>Iris pseudacorus</i>
<i>Lycopus europaeus</i>
<i>Lythrum salicaria</i>
<i>Myosotis scorpioides</i>
<i>Platanus arundinacea</i>
<i>Ranunculus</i>
<i>Ranunculus sceleratus</i>
<i>Valeriana officinalis</i>
<i>Veronica beccabunga</i>

POND (AQUATIC) PLANTING

Species
<i>Callitriche stagnalis</i>
<i>Glycerh fluitans</i>
<i>Polygonum amphibium</i>
<i>Potamogeton crispus</i>



Drawing Title

Rev URS Infrastructure & Environment UK Limited

WHITECLEAVE QUARRY

PERIMETER SWALE  
& BUND PLANTING

APPENDIX 5

Drawing Number	Rev
Scale at A3	
1:1000	
Drawn	Approved
LB	SG
Stage 1 check	SG
Stage 2 check	Originated
LB	Date
	10.02.2012

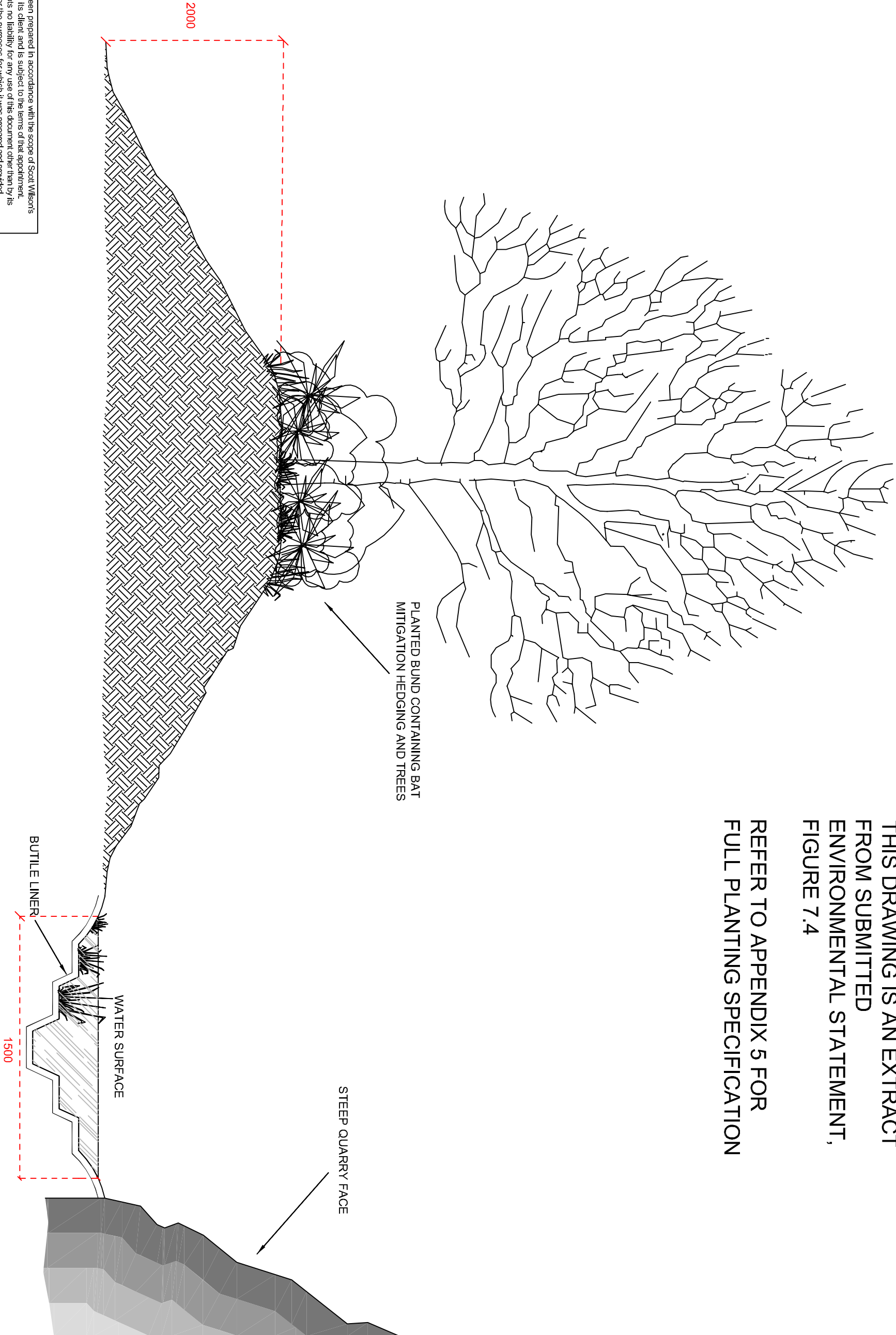
Map/Tower House,  
Armadale Way,  
Plymouth,  
Devon, PL1 1LD  
T +44 (0)1752 676700  
F +44 (0)970 238 6023  
www.ursglobal.com





PLANNING

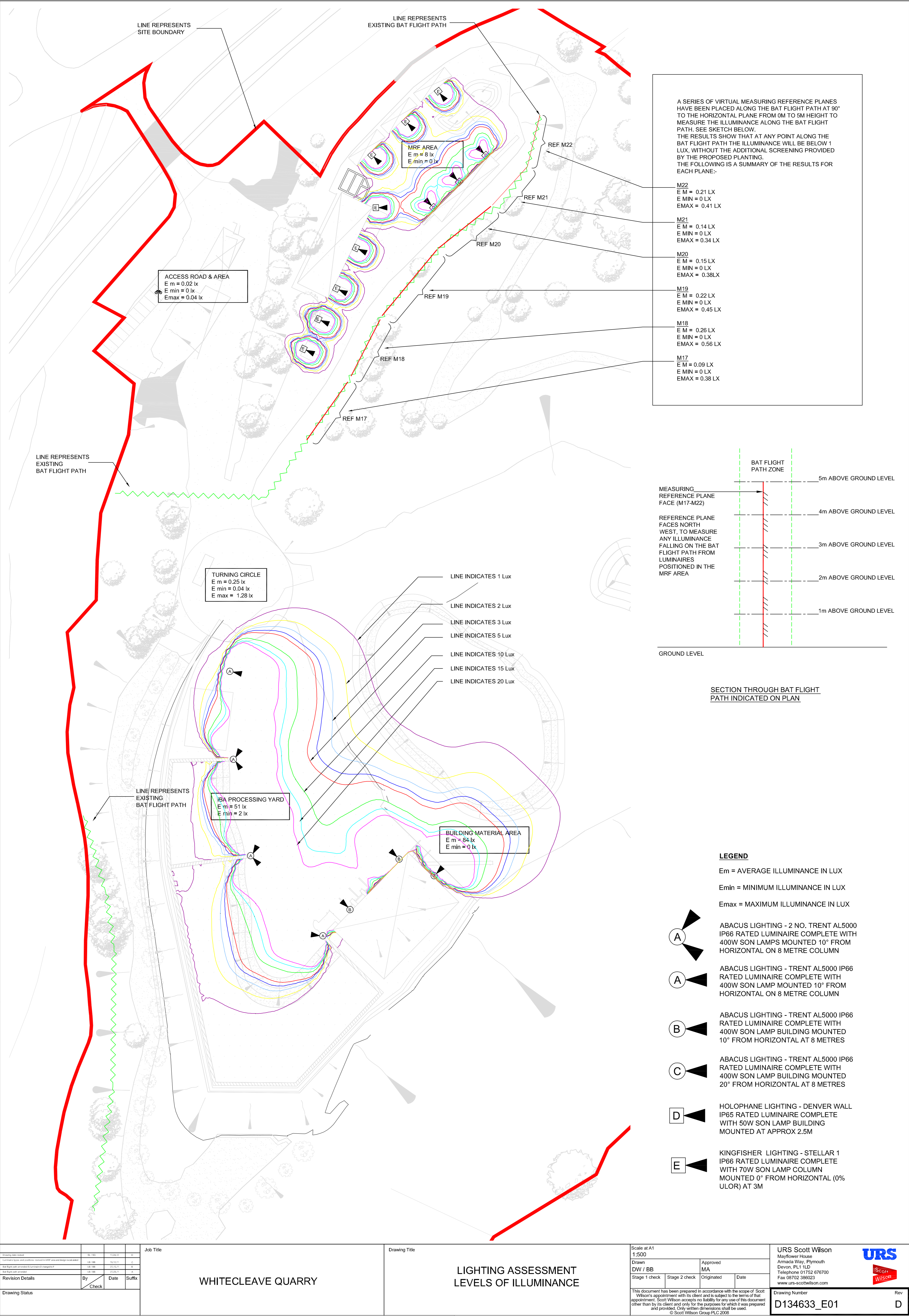
THIS DRAWING IS AN EXTRACT  
FROM SUBMITTED  
ENVIRONMENTAL STATEMENT,  
FIGURE 7.4

REFER TO APPENDIX 5 FOR  
FULL PLANTING SPECIFICATION



This document has been prepared in accordance with the scope of Scott Wilson's appointment with its client and is subject to the terms of that appointment. Scott Wilson accepts no liability for any use of this document other than by its client and only for the purposes for which it was prepared and provided. Only written dimensions shall be used. © Scott Wilson Ltd 2010

Job Title				Drawing Title			
WHITECLEAVE QUARRY				WETLAND / SCRUB PLANTING PERIMETER INDICATIVE SECTION			
Drawing date revised				LB / SL	17.04.12	A	
Revision Details				By	Check	Date	Suffix
				Scale at A3 : NTS			
				Drw LB	App TW	Rev A	
				Chk	Date 24.06.11	Date 17.04.12	
				D134633			
				 			
				www.urs-scotwilson.com			



Drawing title	Job Title
Drawing date issued	15/10/20
Drawn by	15/10/20
Checked by	15/10/20
Approved by	15/10/20
Revision Details	By Date Suffix
Drawing Status	Check

Job Title	WHITECLEAVE QUARRY
-----------	--------------------

Drawing Title	LIGHTING ASSESSMENT LEVELS OF ILLUMINANCE
---------------	---

Scale at A1	1:500
Drawn	DW / BB
Approved	MA
Stage 1 check	Stage 2 check
Originated	Date
This document has been prepared in accordance with the scope of Scott Wilson's appointment with its client and is subject to the terms of that appointment. Scott Wilson accepts no liability for any use of this document other than by its client and only for the purposes for which it was prepared and provided. Only written dimensions shall be used.	
© Scott Wilson Group PLC 2008	

URS Scott Wilson	URS
Mayflower House	
Armada Way, Plymouth	
Devon, PL1 1LD	
Telephone 01752 676700	
Fax 01752 386023	
www.urs-scottwilson.com	
Drawing Number	Rev
D134633_E01	D

PLANTING SCHEDULE

PROPOSED TREE PLANTING - AREA 1

Qty	Species	Height	Form	Root
38	<i>Corylus avellana</i>	40-60cm	Whip	RB
37	<i>Corylus avellana</i>	90-120cm	Feathered	RB
38	<i>Crataegus monogyna</i>	40-60cm	Whip	RB
37	<i>Crataegus monogyna</i>	90-120cm	Feathered	RB
37	<i>Ilex aquilinum</i>	40-60cm	Whip	RB
37	<i>Ilex aquilinum</i>	90-120cm	Feathered	RB
37	<i>Salix cinerea</i>	40-60cm	Whip	RB
37	<i>Salix cinerea</i>	90-120cm	Feathered	RB
298				

INTERCEPTOR  
TANK PLANTING

Species
<i>Iris pseudacorus</i>

PROPOSED TREE PLANTING - AREAS 2 & 3

Qty	Species	Height	Girth	Clear Stem	Form	Root
17	<i>Betula pubescens</i>	40-60cm			Whip	RB
16	<i>Betula pubescens</i>	90-120cm			Feathered	RB
17	<i>Carpinus betulus</i>	40-60cm			Whip	RB
16	<i>Carpinus betulus</i>	90-120cm			Feathered	RB
3	<i>Carpinus betulus</i>	425-600cm	14 -16cm	175-200cm	Standard	RB
16	<i>Fraxinus excelsior</i>	40-60cm			Whip	RB
16	<i>Fraxinus excelsior</i>	90-120cm			Feathered	RB
17	<i>Quercus petraea</i>	40-60cm			Whip	RB
16	<i>Quercus petraea</i>	90-120cm			Feathered	RB
2	<i>Quercus petraea</i>	425-600cm	14 -16cm	175-200cm	Standard	RB
181						

ALL PROPOSALS SHOWN ARE SUBJECT TO LANDOWNER AND NATURAL ENGLAND APPROVAL.  
FOR ADDITIONAL AREAS OF OFF-SITE WOODLAND MITIGATION PLANTING REFER TO URS SCOTT WILSON DRAWING NUMBER D134633-400 .

**EXISTING TREES AND SHRUBS**  
Any surgery required shall be in accordance with BS 3998 'Recommendations for Tree Works' and shall require the prior approval of the Landscape Architect.

Avoid damage to branches, trunks and roots of trees. All existing trees & shrubs to be retained are subject to BS 5837 (2005) 'Trees in relation to Construction - Recommendations', & should be fully fenced off, prior to the commencement of any works. In accordance with protection drawings and recommendations following advice from a qualified arboricultural consultant.

No storage of materials, disposal of rubbish, site fires, spillage of oil and chemicals, ground compaction, excavation or changes in level shall be carried out within existing tree / hedge canopies.

**PLANTING**  
All plants and planting to comply with the requirements of all current / relevant British Standard specifications including BS 5936: Part 1 (1992), Part 2 (1990) and Part 4 (1984) and BS 5326 (1975) where applicable, BS 4428 (1989) and the BAU / LU / Nursery Trade Tender Document (5th Edition 1986). All plants to be supplied in accordance with the planting schedule.

**PROPOSED HEDGEBANK (BUND)**  
Whips proposed along the bund are to be planted at a density of 1/m<sup>2</sup>. Where feasible, young transplanted stock from the woodland to be removed is to be planted at a density of 1/20 m<sup>2</sup>. To be irrigated by a trickle pipe laid along the top of the bank - to be fed by an existing ,reliable water supply.  
-Trees to be grown and supplied in accordance with National Plant Specification.  
-Trees to be transplanted and planted in accordance with Horticultural Trades Association Handling and Establishment of Landscape Plants.  
-Detective or falling trees being replaced for a defects period of five years post transplanting.

**POND PLANTING**  
Floating / submersible baskets and pots installed and secured per manufacturers recommendations.  
Proportions of plant mixes and sizes to be specified by an ecological specialist.

PLANT MATERIAL TREATMENT

NB All to be British grown stock and fully hardened off.

Root Dip - Proprietary Root Dip applied to all bare rooted stock (1) at time of lifting at nursery and (2) prior to planting.

Anti-Dessicant - Proprietary anti-dessicant to be applied to foliage of all containerised/rootballed material in leaf, specimen containers and evergreens etc. (1) prior to transportation and (2) during any delay in planting.

Pruning - Allow for pruning of all deciduous trees and shrubs by 1/3rd following planting at Landscape Architects direction or as indicated in the planting schedule.

Tree Stakes & Ties - All trees to be staked. Stakes to be pressure treated, round, smooth and peeled Larch or Chestnut, not less than 75mm in diameter & filled with an adjustable type rubber tree tie/spacing. (Maximum 600mm Ht. exposed stake above ground level).

SITE WON GROWING MEDIUM TO BE USED BY CLIENT. THE FOLLOWING TOPSOIL SPECIFICATION IS RECOMMENDED BEST PRACTICE.

**TOPSOIL REQUIREMENTS**  
To BS 3882 (2007) as qualified by full contract specification. All areas shall be cultivated to a minimum depth of 150mm. Fall weed, rubbish and stones over 38mm gauge shall be removed. Earth to be rolled as required and raked in two directions.

Whip planting - 300 dia. x 300mm depth  
Feathered planting - 600 dia. x 600mm depth

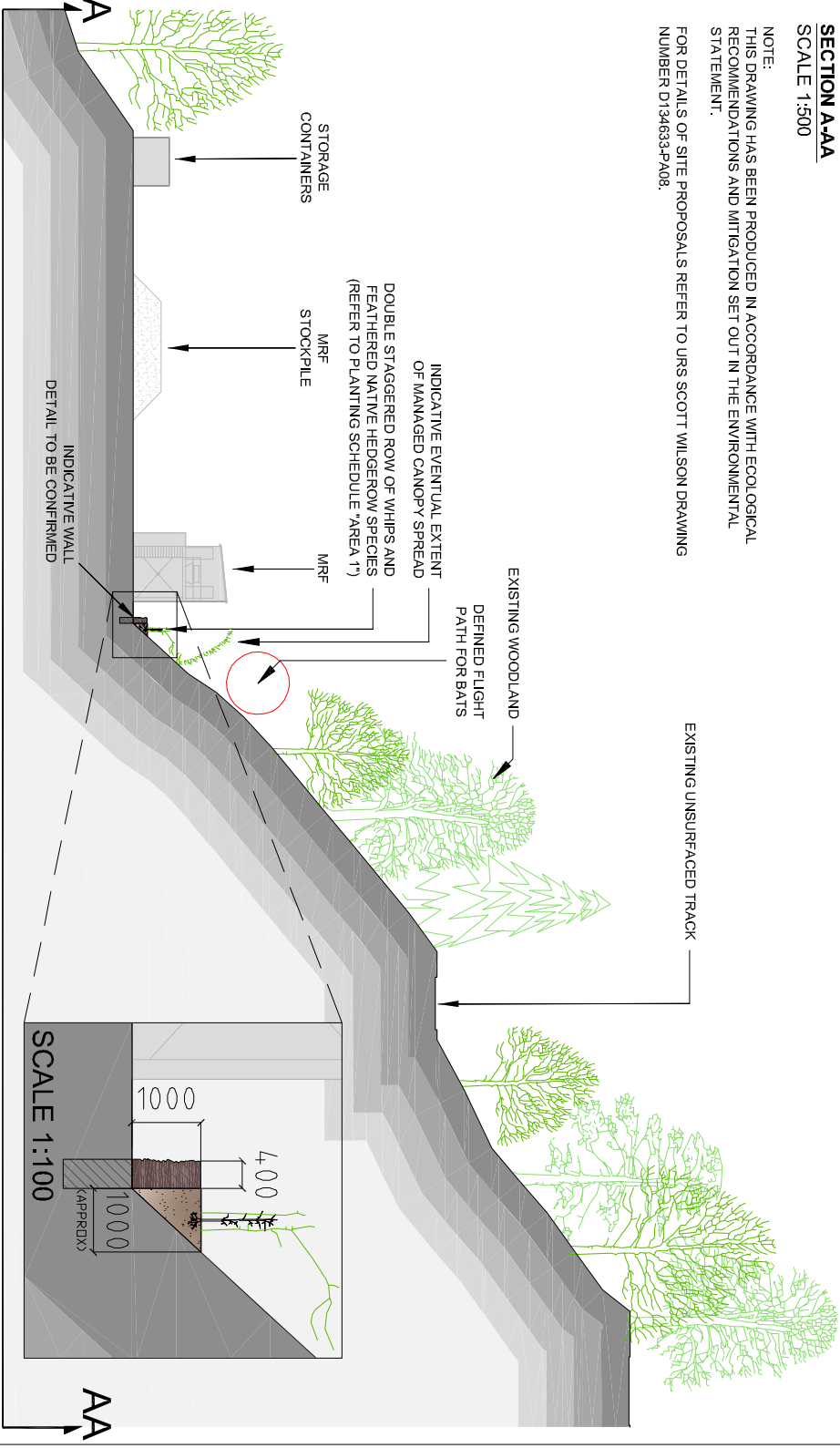
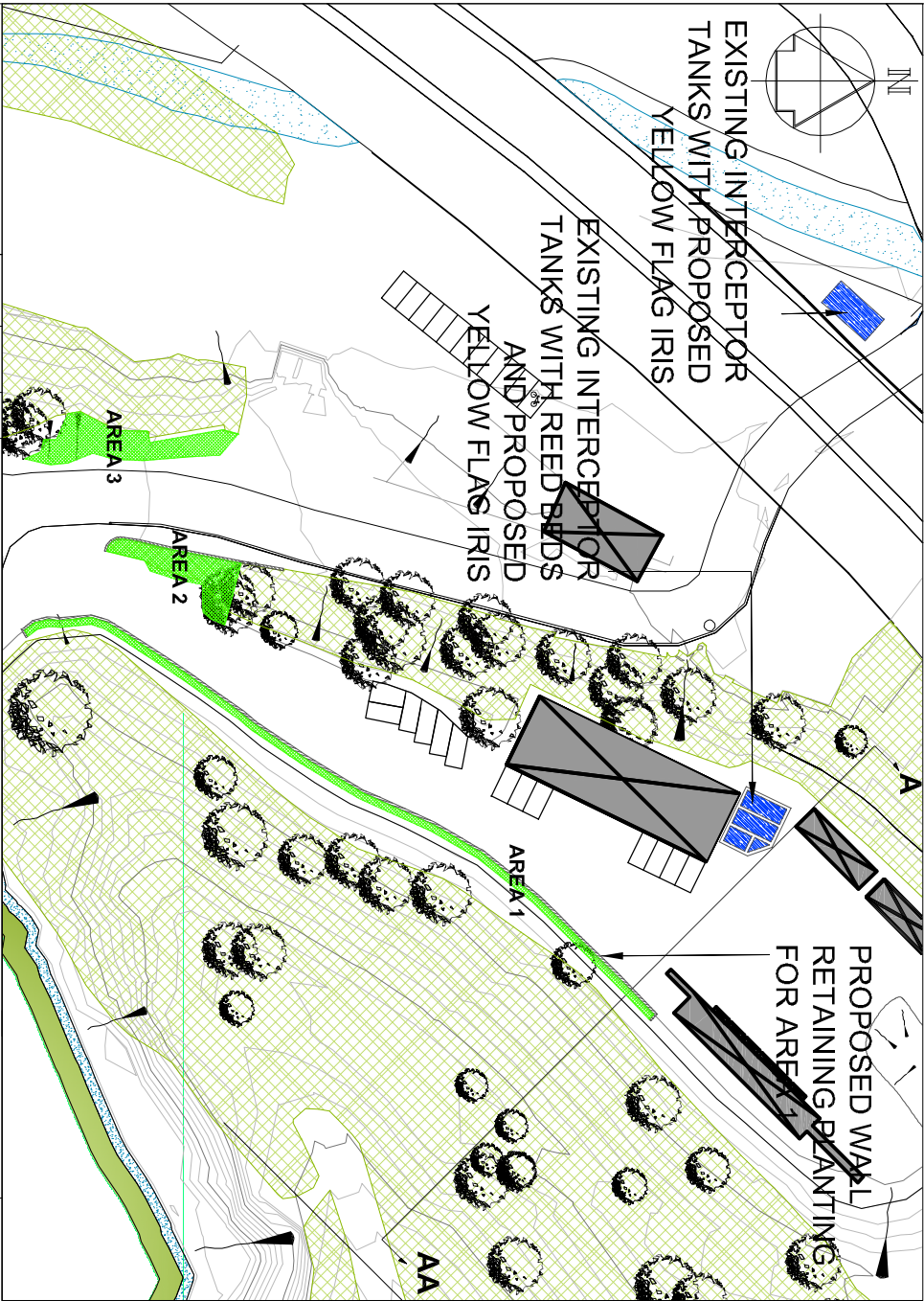
Where necessary increase tree pit dimensions to ensure that tree pits are at least 75mm deeper and 150mm wider than rootball. Break up bottom of pits to a depth of 100mm. Compacted glazed sides of pits should be roughened.

TOPSOIL IMPROVEMENTS

Applied to all newly planted areas, to manufacturers recommendations where appropriate.

- 1) Incorporate 75mm depth of soil conditioner into topsoil during cultivation.
- 2) Incorporate Alignure (Seamure Soilbuilder) Soil Improver approx. 1.5KG/m<sup>3</sup> to tree pit backfill and 75g/m<sup>2</sup> to shrub beds.
- 3) Incorporate Enmag (6:20:10) granular fertilizer approx 400g/m<sup>3</sup> to tree-pit backfill and 100g/m<sup>2</sup> to structural/ornamental beds.
- 4) Watering - supply minimum 54 litres/tree and 4.5 litres/shrub at planting.
- 5) Mulch - apply a 75mm depth 50-100mm grade bark mulch, 1m radius around all whips and feathered trees. Ornamental

Bark to consist of predominantly matured British Pine Bark with an even nominal particle size distribution of 5-35mm with 0% dust and fines and less than 5% wood content. The product shall be pest, disease and weed free and not have been treated with Methyl Bromide or any additives. The product shall have been tested in accordance with the requirements of BS 4790: 1987, for fire resistance. NB - Watering to be carried out prior to application of bark mulch.



Job Title

Drawing Title

WHITECLEAVE QUARRY

ECOLOGICAL MITIGATION  
PLANTING AREAS 1, 2 & 3

PLANNING

APPENDIX 8

Rev

Rev

Urs Infrastructure & Environment UK Limited

www.ursglobal.com