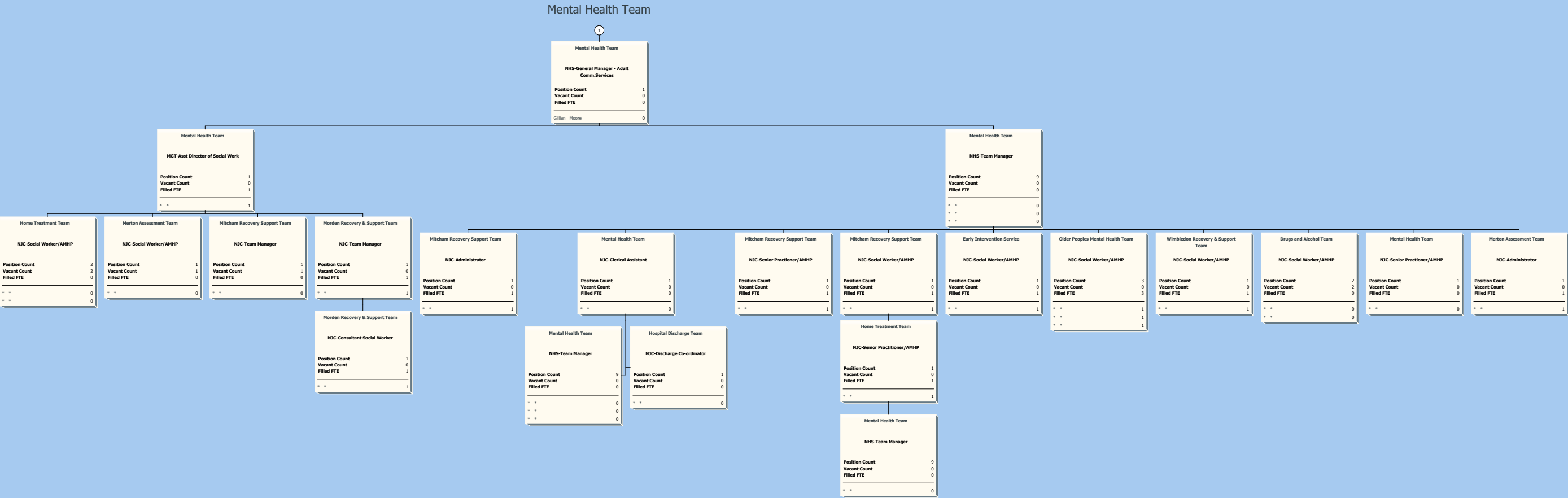
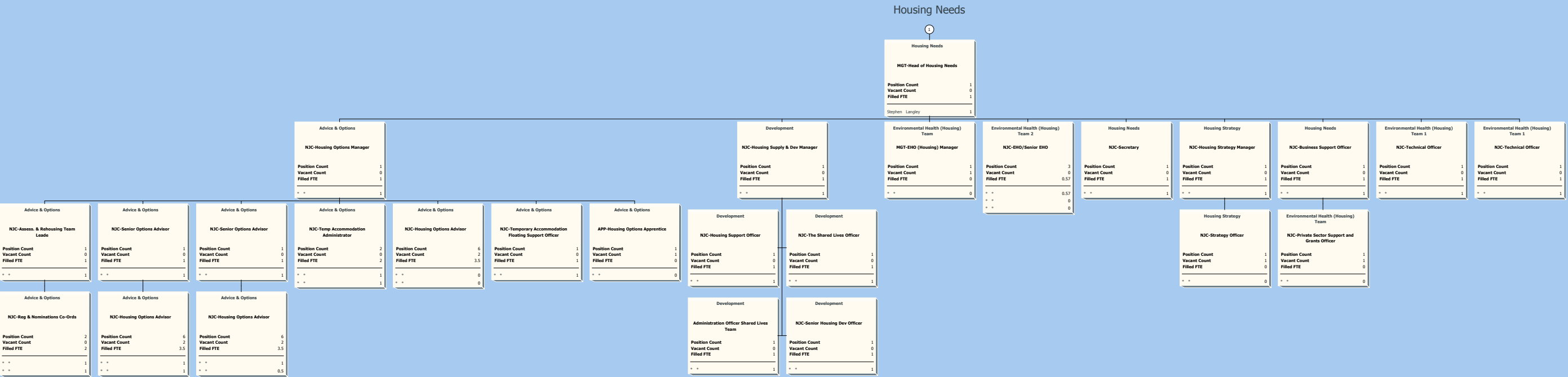


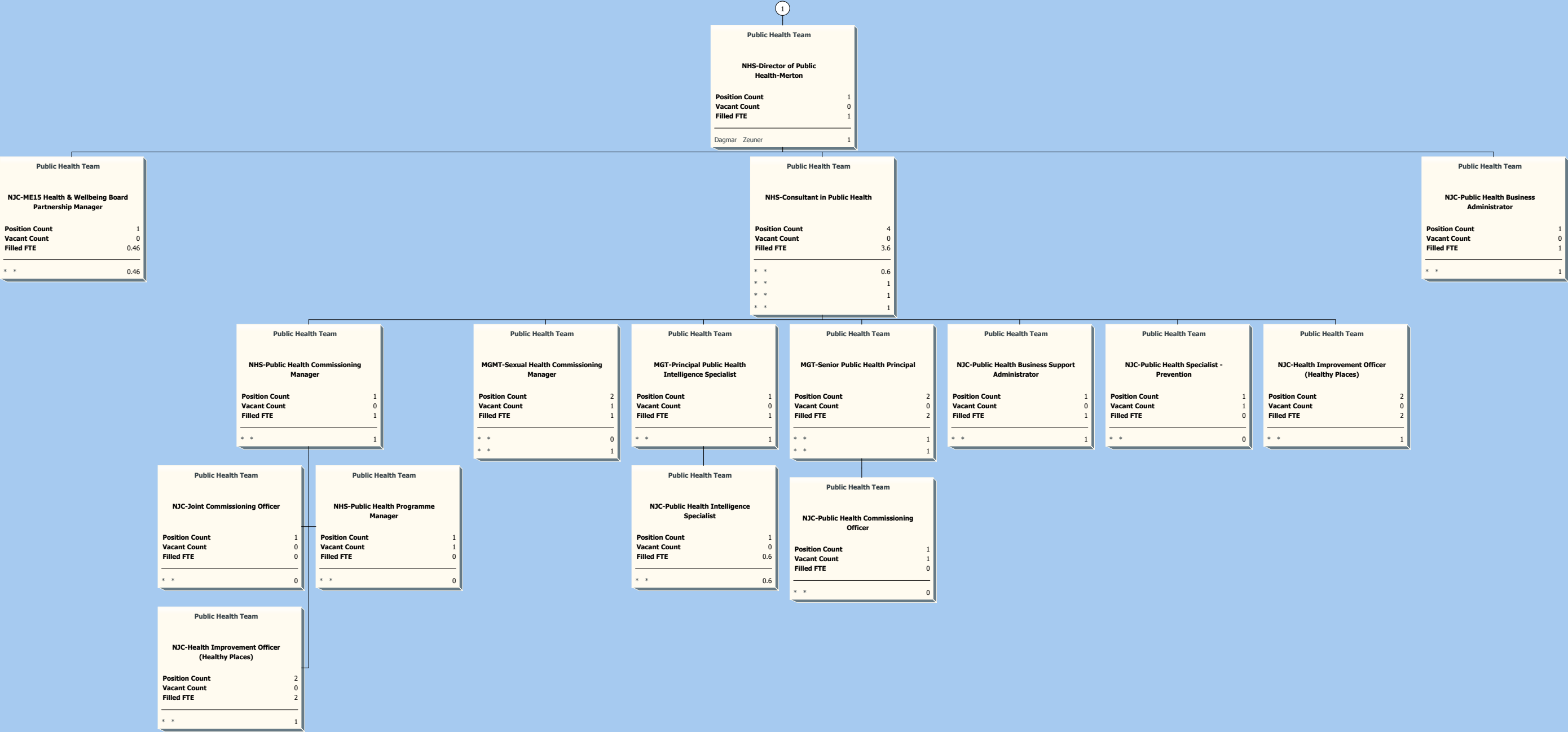
COMMUNITY & HOUSING

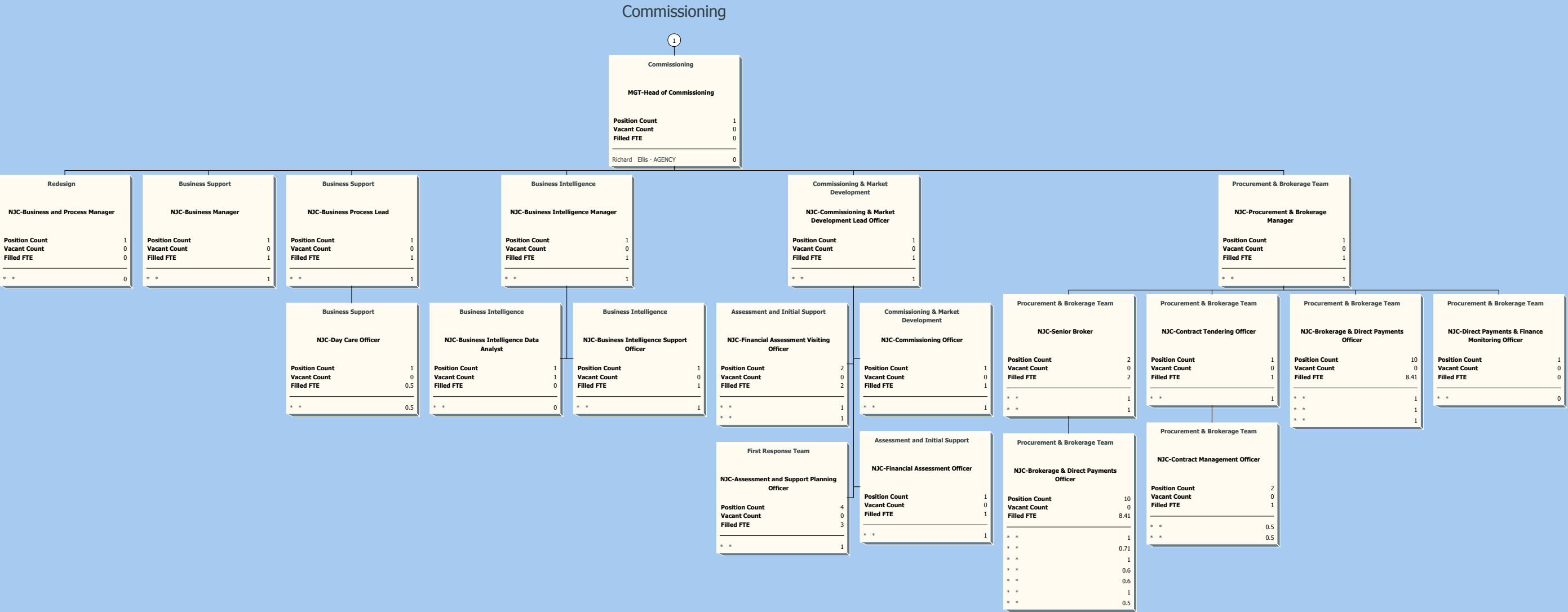


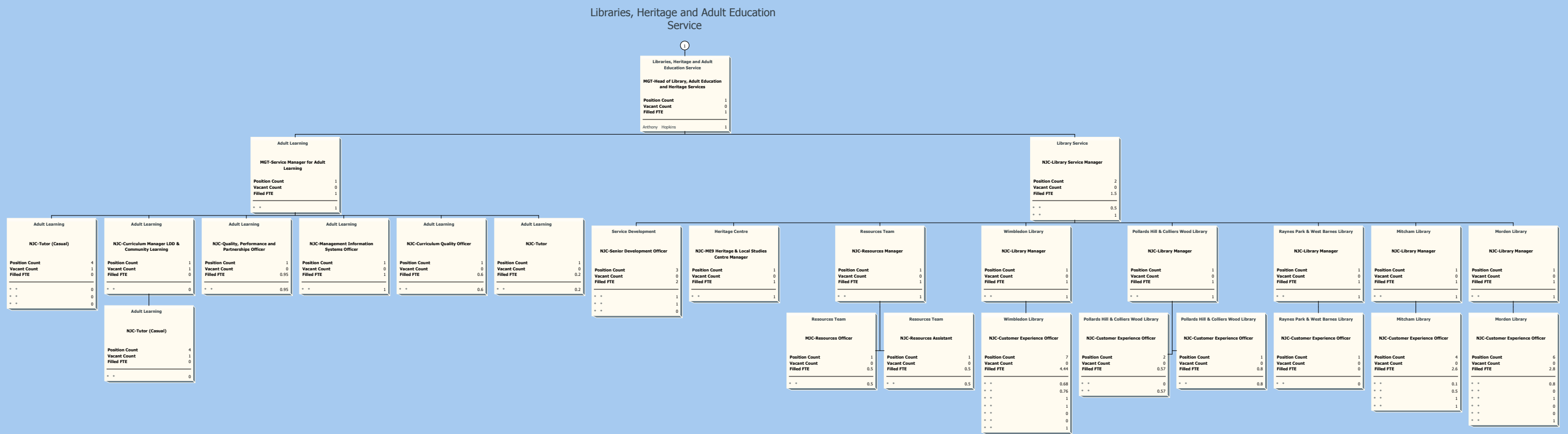




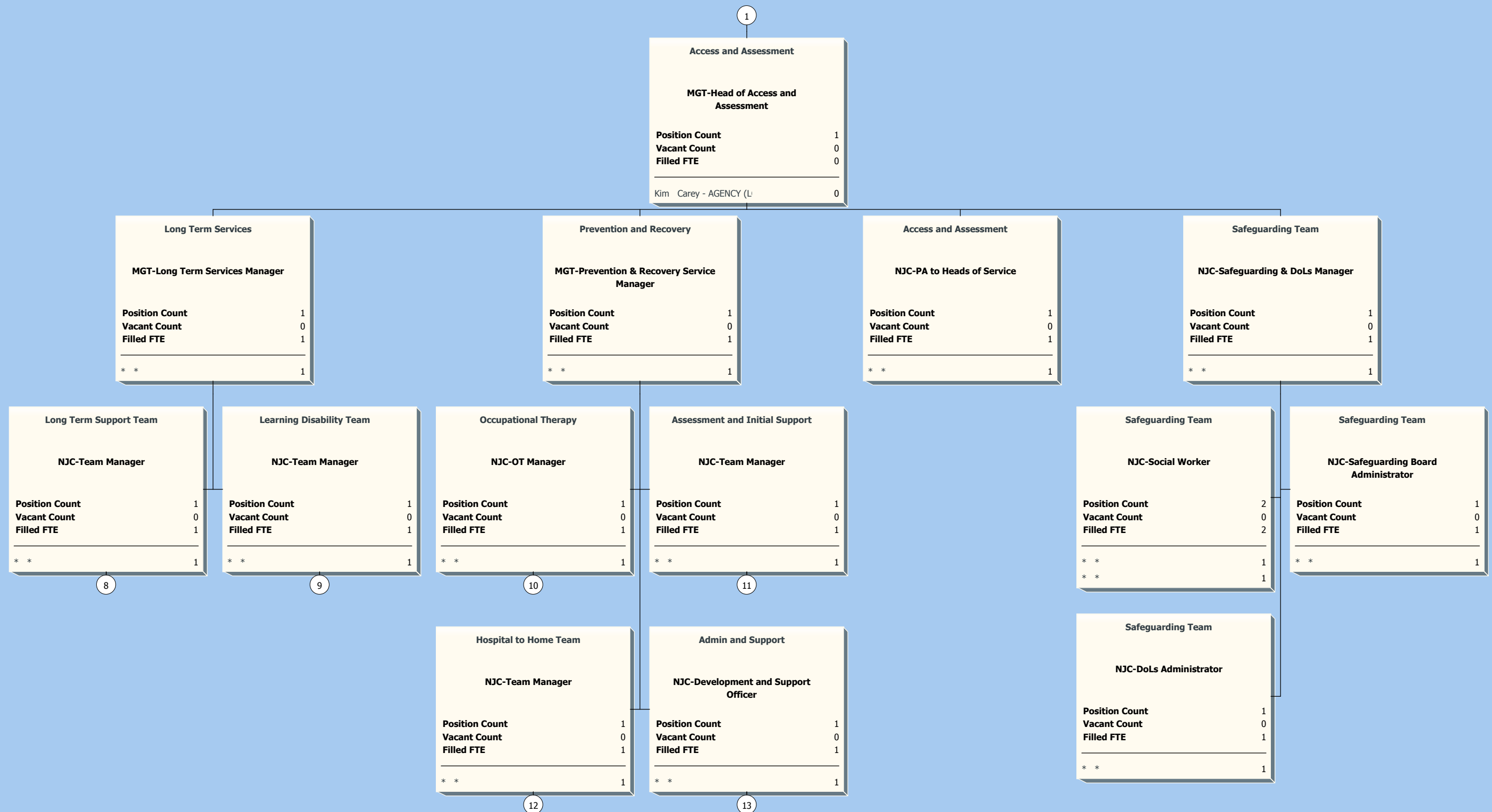
Public Health Team



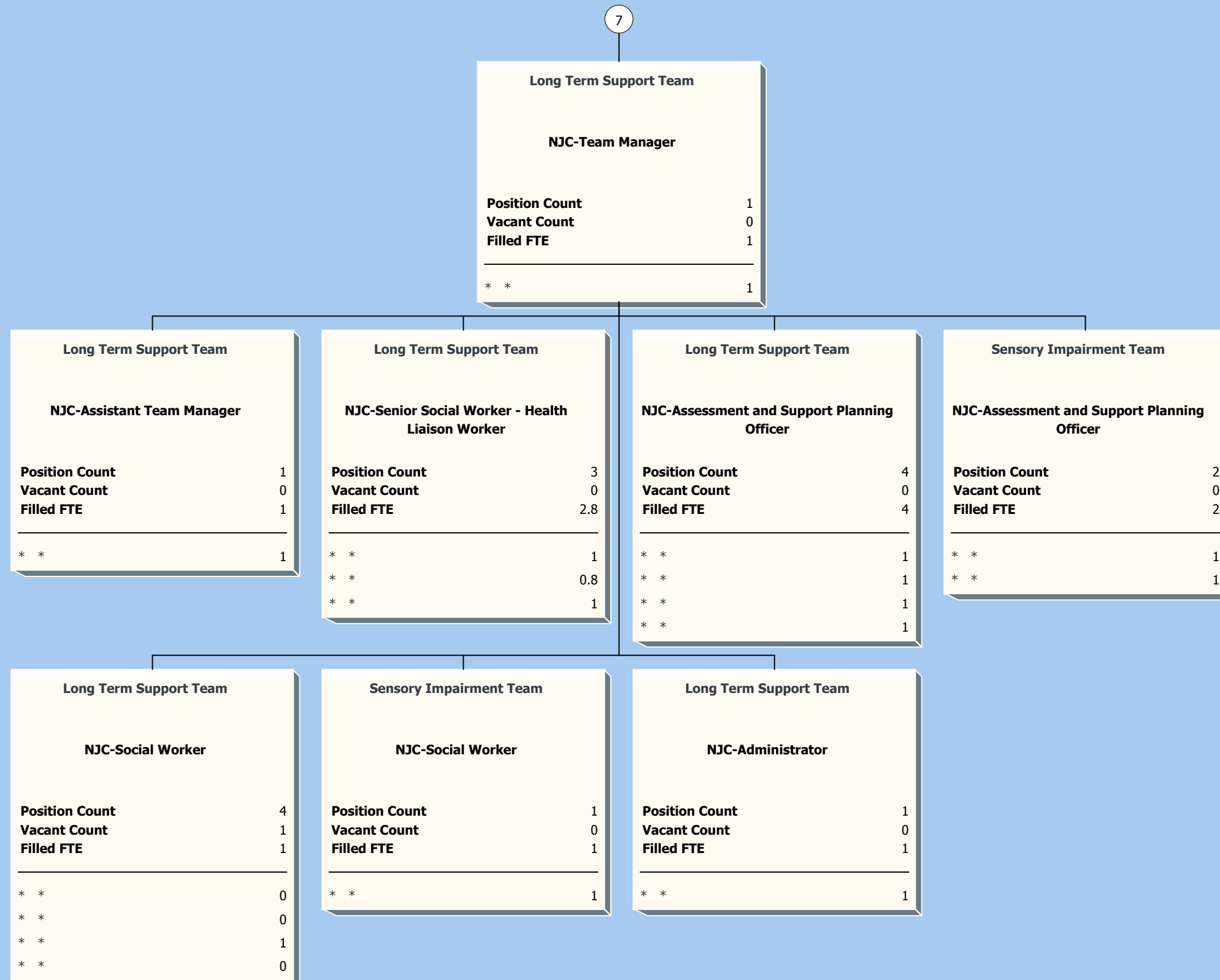


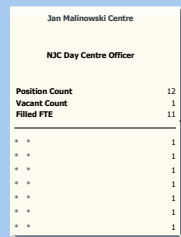
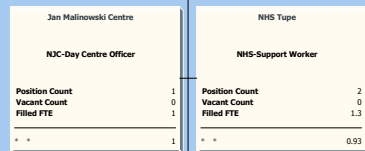
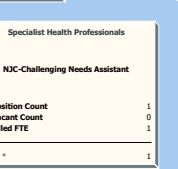
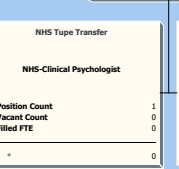
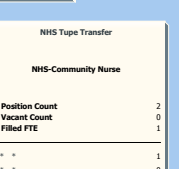
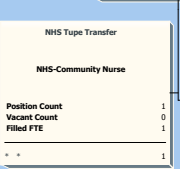
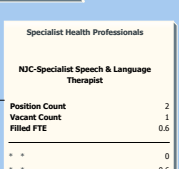
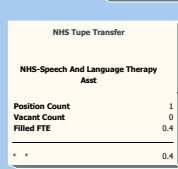
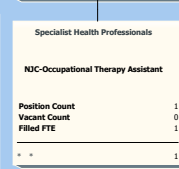
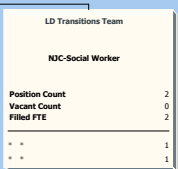
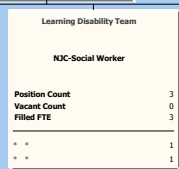
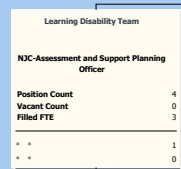
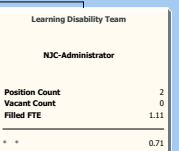
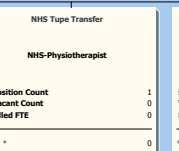
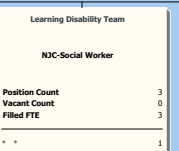
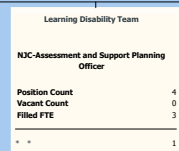
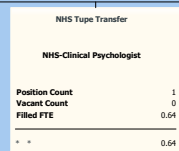
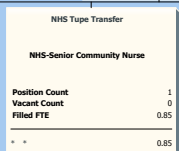
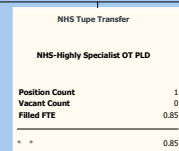


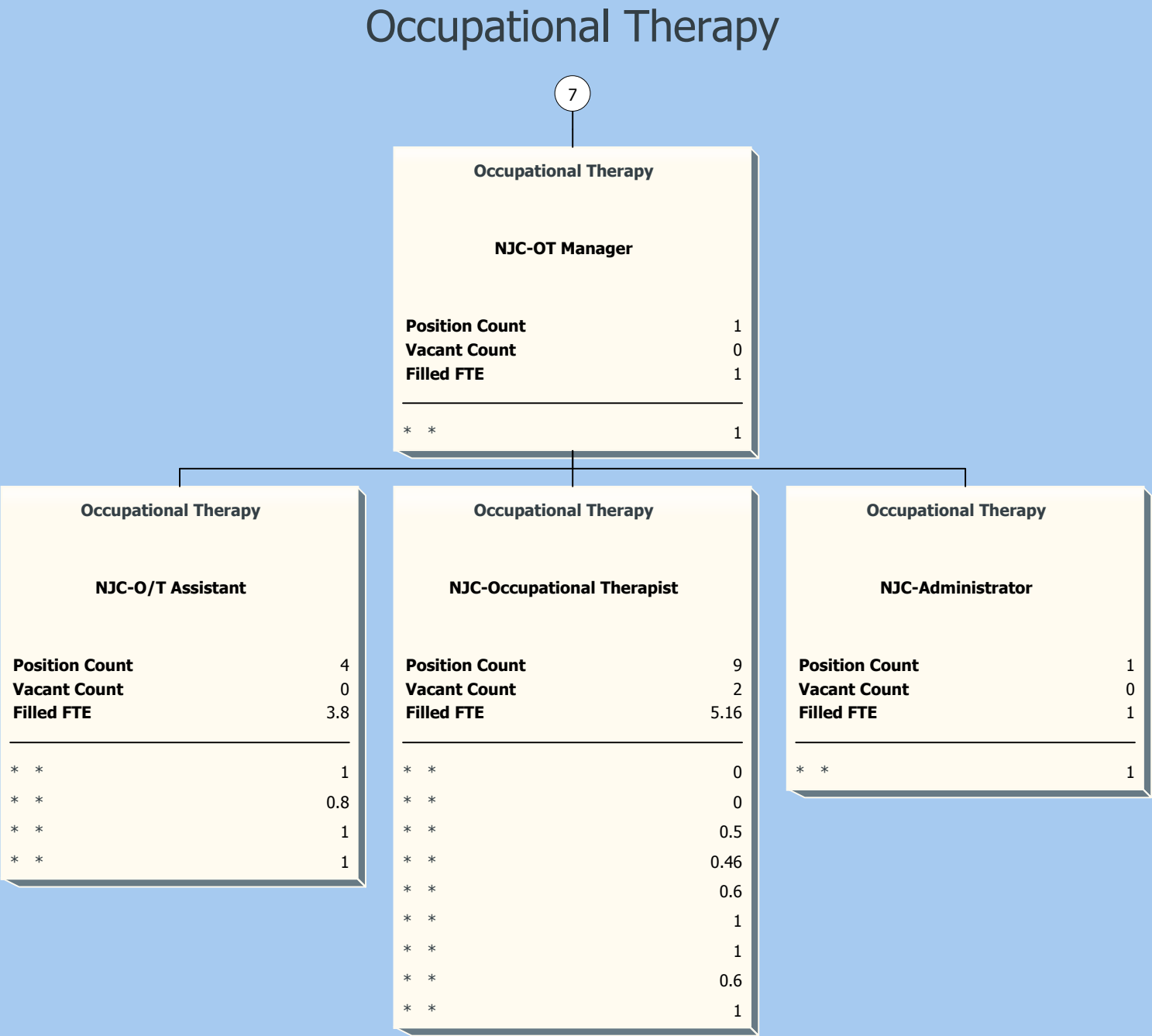
Access and Assessment



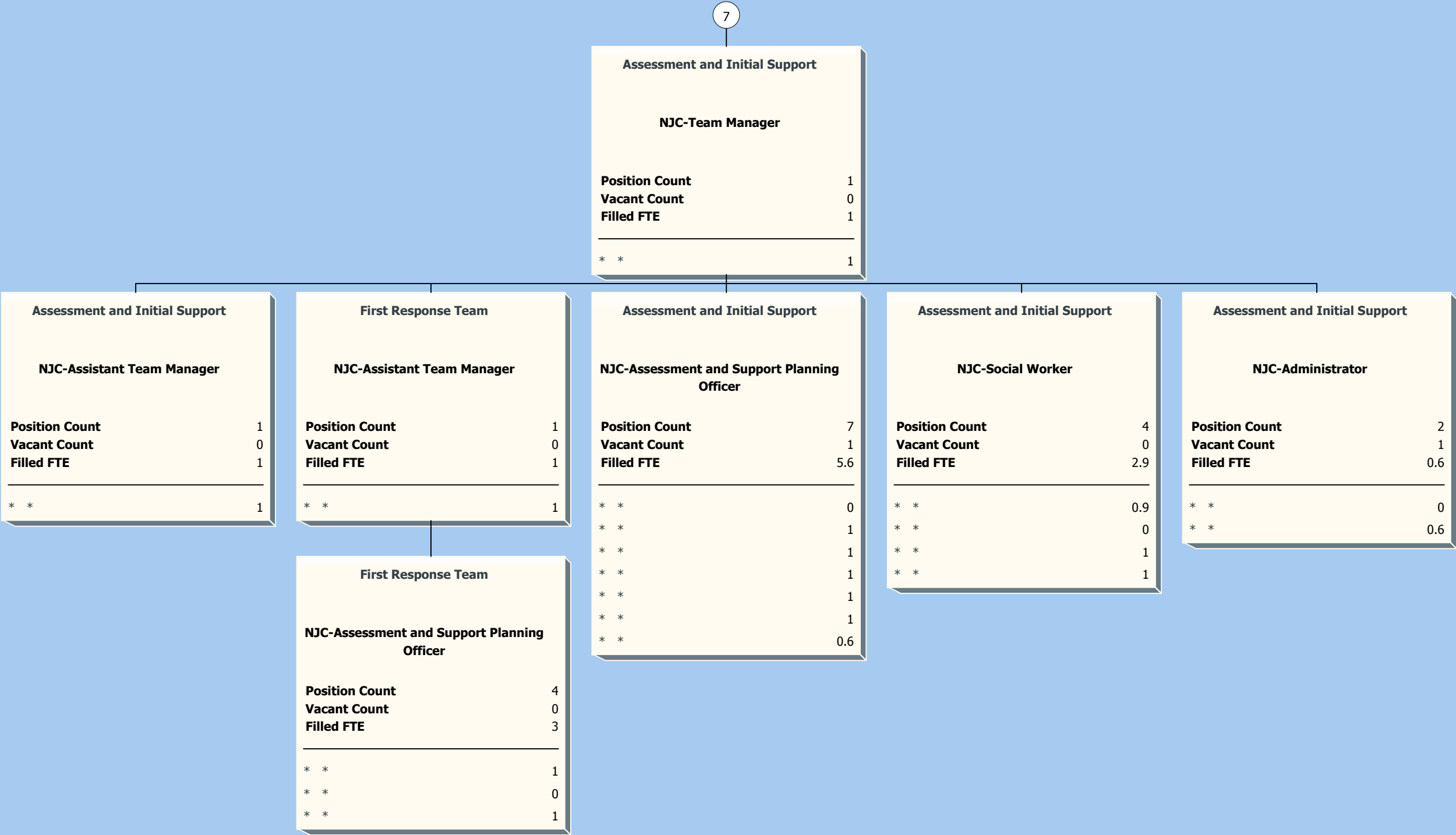
Long Term Support Team



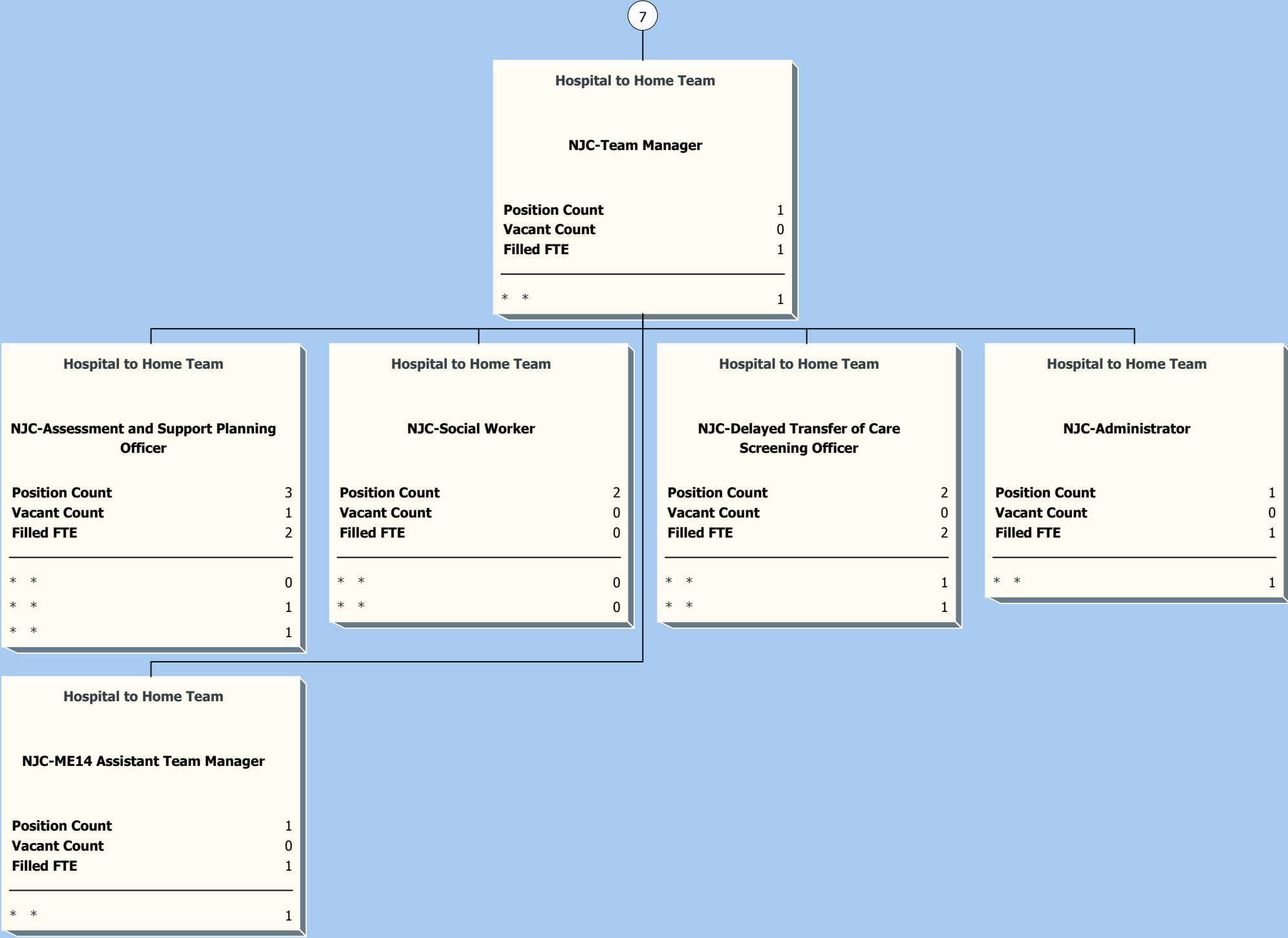




Assessment and Initial Support



Hospital to Home Team



Admin and Support

7

Admin and Support	
NJC-Development and Support Officer	
Position Count	1
Vacant Count	0
Filled FTE	1
<hr/>	
* *	1

East Merton	
NJC-OT Team Leader	
Position Count	1
Vacant Count	0
Filled FTE	0
<hr/>	
* *	0

Raynes Park	
NJC-OT Team Leader	
Position Count	1
Vacant Count	0
Filled FTE	1
<hr/>	
* *	1

East Merton	
NJC-Reablement Officer	
Position Count	3
Vacant Count	0
Filled FTE	3
<hr/>	
* *	1
* *	1
* *	1

West Merton	
NJC-Reablement Officer	
Position Count	3
Vacant Count	1
Filled FTE	2
<hr/>	
* *	1
* *	1

Raynes Park	
NJC-Reablement Officer	
Position Count	3
Vacant Count	0
Filled FTE	3
<hr/>	
* *	1
* *	1
* *	1

Admin and Support	
NJC-Team Co-ordinator	
Position Count	2
Vacant Count	1
Filled FTE	1
<hr/>	
* *	0
* *	1

East Merton	
NJC-Support Worker	
Position Count	10
Vacant Count	0
Filled FTE	7.52
<hr/>	
* *	0.71
* *	0.85
* *	0.71
* *	0.71
* *	0.85
* *	0.71
* *	0.71

West Merton	
NJC-Support Worker	
Position Count	8
Vacant Count	1
Filled FTE	5.39
<hr/>	
* *	0.85
* *	0.71

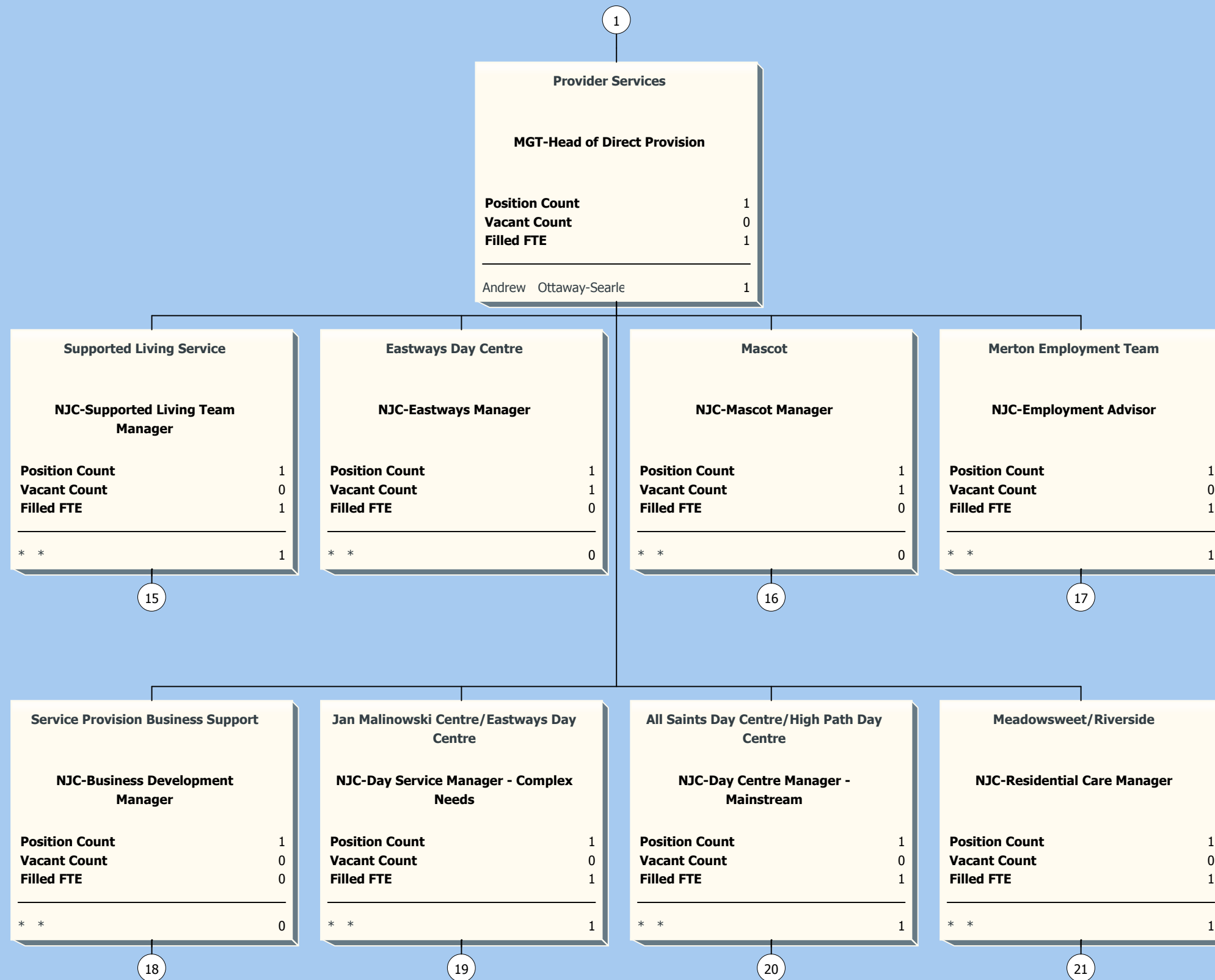
East Merton	
NJC-Support Worker	
Position Count	10
Vacant Count	0
Filled FTE	7.52
<hr/>	
* *	0.85
* *	0.71

West Merton	
NJC-Support Worker	
Position Count	8
Vacant Count	1
Filled FTE	5.39
<hr/>	
* *	0
* *	0.71
* *	0.71
* *	0.85
* *	0.85
* *	0.71

East Merton	
NJC-Support Worker	
Position Count	10
Vacant Count	0
Filled FTE	7.52
<hr/>	
* *	0.71

Raynes Park	
NJC-Support Worker	
Position Count	10
Vacant Count	1
Filled FTE	6.81
<hr/>	
* *	0
* *	0.85
* *	0.71
* *	0.71
* *	0.71
* *	0.71
* *	0.71
* *	0.71
* *	0.85
* *	0.85

Provider Services

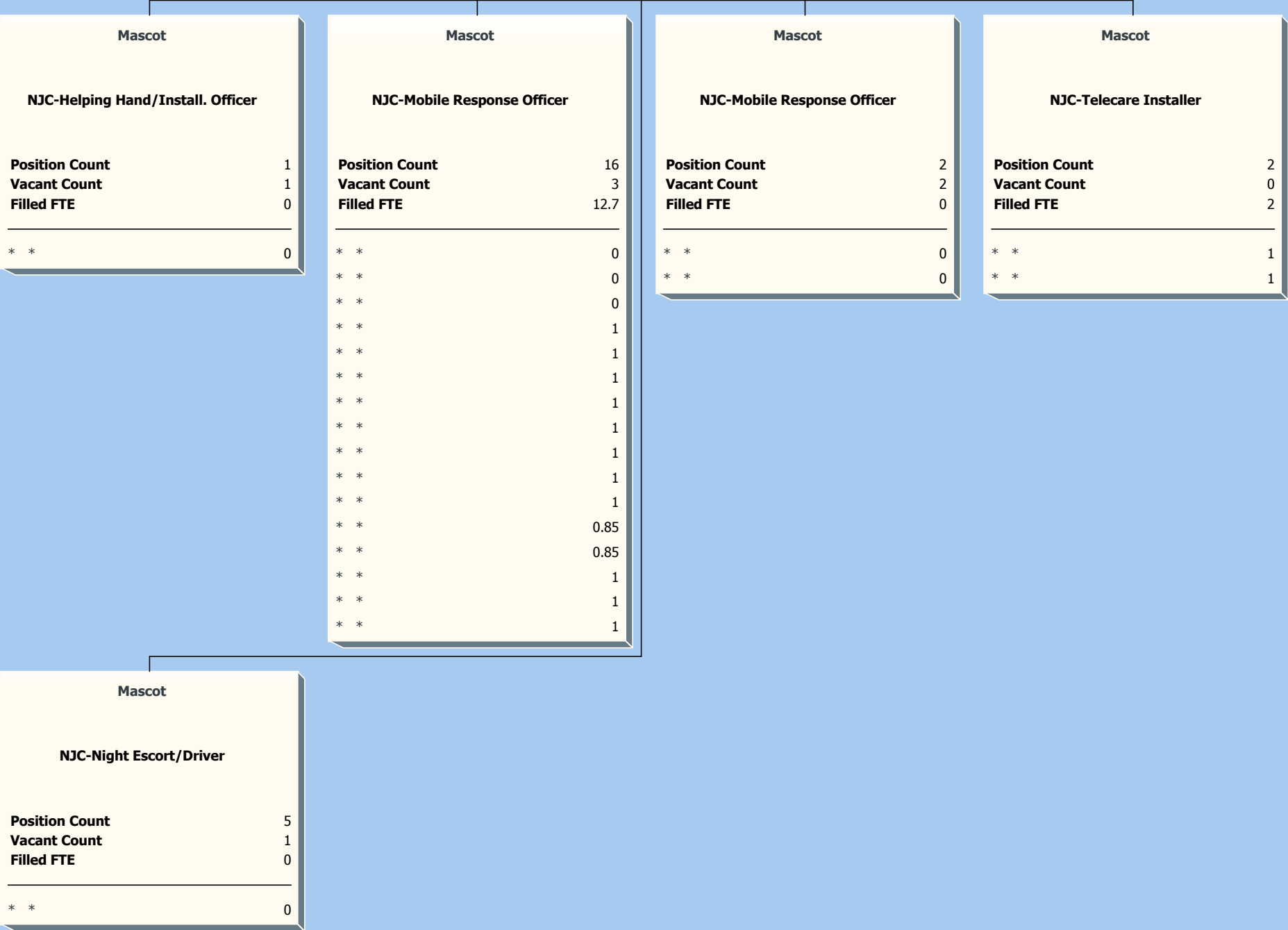




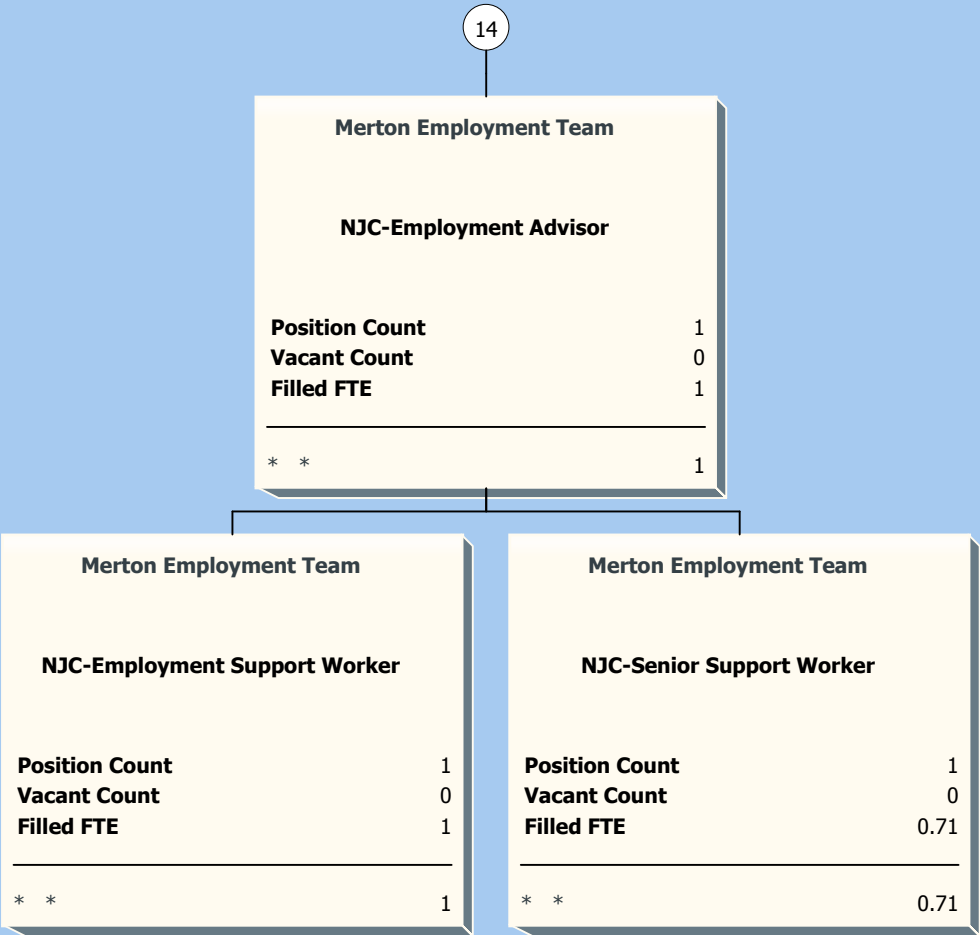
Mascot

14

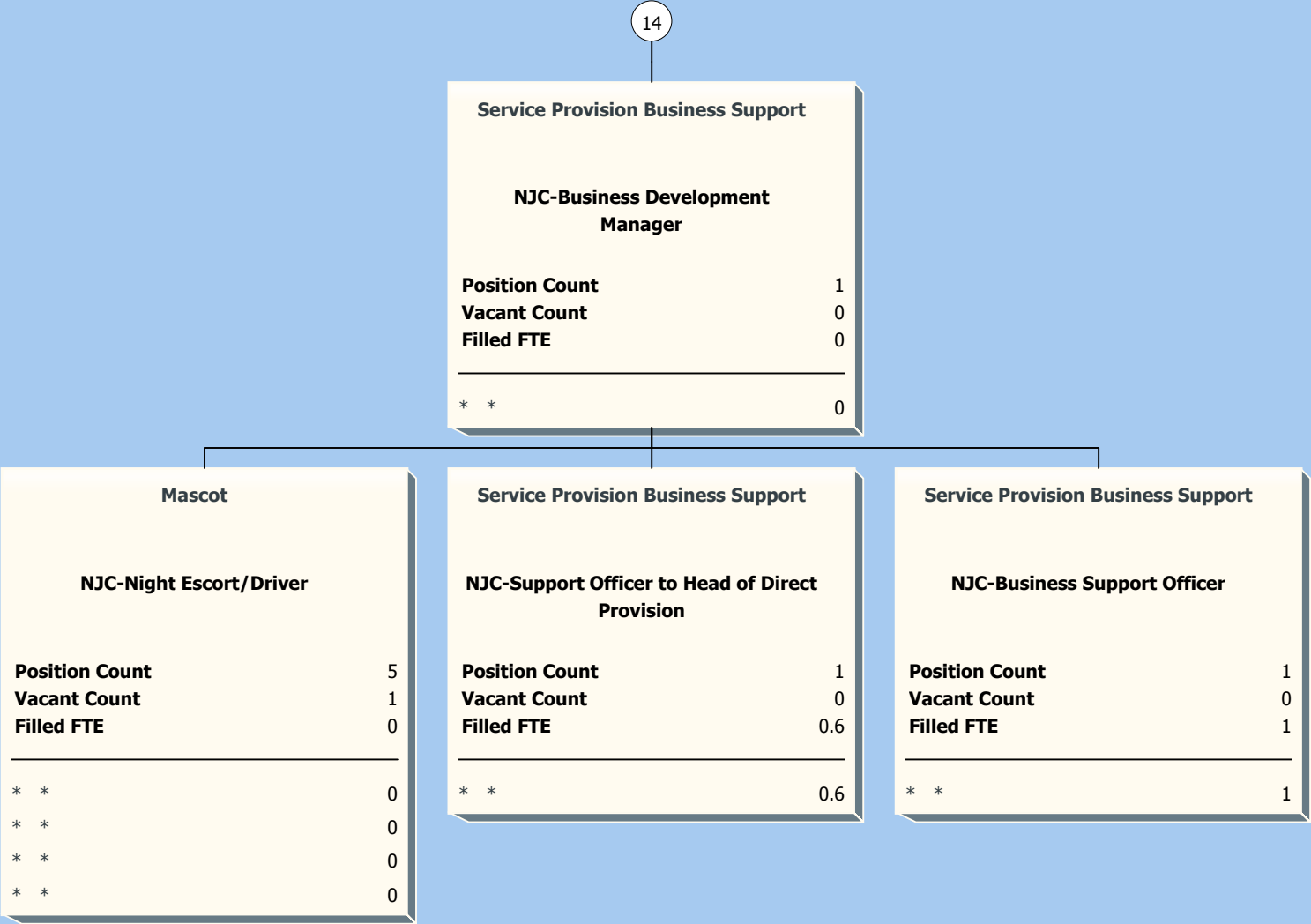
Mascot	
NJC-Mascot Manager	
Position Count	1
Vacant Count	1
Filled FTE	0
<hr/>	
* *	0

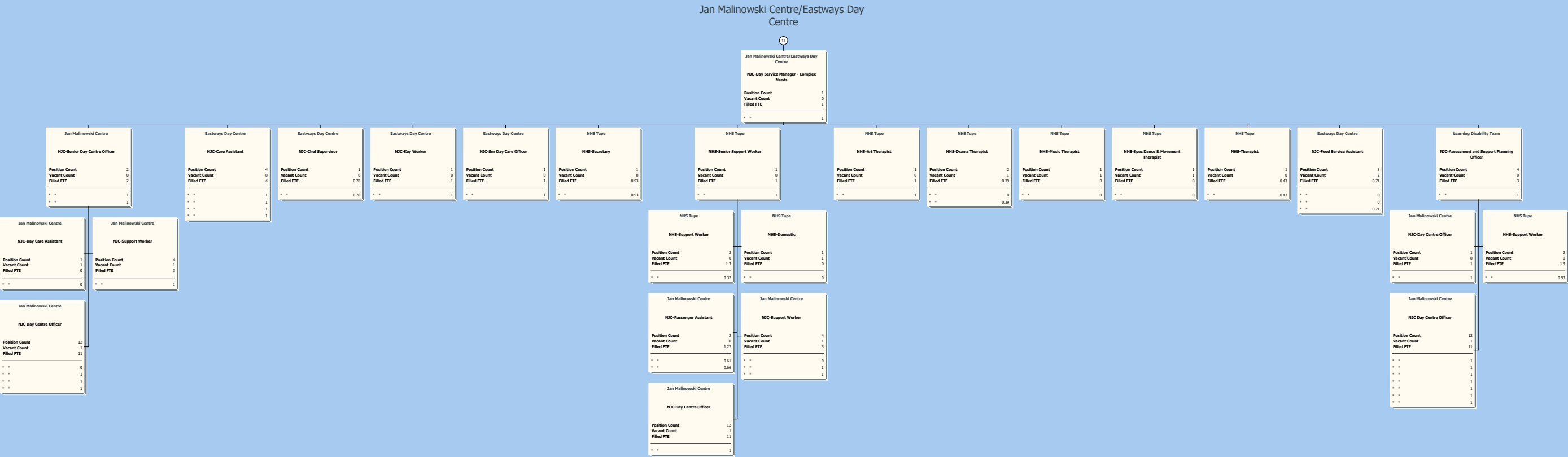


Merton Employment Team



Service Provision Business Support





All Saints Day Centre/High Path Day Centre

14

All Saints Day Centre/High Path Day Centre	
NJC-Day Centre Manager - Mainstream	
Position Count	1
Vacant Count	0
Filled FTE	1
* *	
	1

High Path Day Centre	
NJC-Community Support Worker	
Position Count	3
Vacant Count	0
Filled FTE	2.71
* *	
	1
* *	
	1
* *	
	0.71

High Path Day Centre	
NJC-Snr Community Support Worker	
Position Count	1
Vacant Count	0
Filled FTE	1
* *	
	1

All Saints Day Centre	
NJC-Senior Support Worker	
Position Count	1
Vacant Count	0
Filled FTE	1
* *	
	1

High Path Day Centre	
NJC-Senior Food Service Assistant	
Position Count	1
Vacant Count	1
Filled FTE	0
* *	
	0

All Saints Day Centre	
NJC-Support Worker	
Position Count	5
Vacant Count	1
Filled FTE	4
* *	
	1

High Path Day Centre	
NJC-Day Centre Officer	
Position Count	3
Vacant Count	0
Filled FTE	2.8
* *	
	1
* *	
	1
* *	
	0.8

All Saints Day Centre	
NJC-Day Centre Officer	
Position Count	3
Vacant Count	0
Filled FTE	3
* *	
	1
* *	
	1
* *	
	1

High Path Day Centre	
NJC-Team Administrator	
Position Count	1
Vacant Count	1
Filled FTE	1
* *	
	1

High Path Day Centre	
NJC-Support Worker	
Position Count	1
Vacant Count	0
Filled FTE	1
* *	
	1

All Saints Day Centre	
NJC-Support Worker	
Position Count	5
Vacant Count	1
Filled FTE	4
* *	
	0
* *	
	1
* *	
	1
* *	
	1

Meadowsweet/Riverside

