

## Monthly Knife Crime Report March 2013

Protective Marking:	Not Protectively Marked
Suitable for Publication Scheme:	Yes
Title and Product Reference No:	PD08/1213/12/V1 - Monthly Knife Crime Report (March 2013)
Purpose:	To provide data for analysis
Relevant to:	MPS
Summary:	Monthly Knife Crime data
Creating Branch/Directorate:	DOI Reporting Services
Review Date:	06/05/2013

**This report uses LIVE DATA extracted from MetMIS**

Last Extracted Date 08/04/2013

Please note extension of external embargo date:  
UNDER EXTERNAL EMBARGO UNTIL 06:00 ON TUES 23/04/2013

## Contents

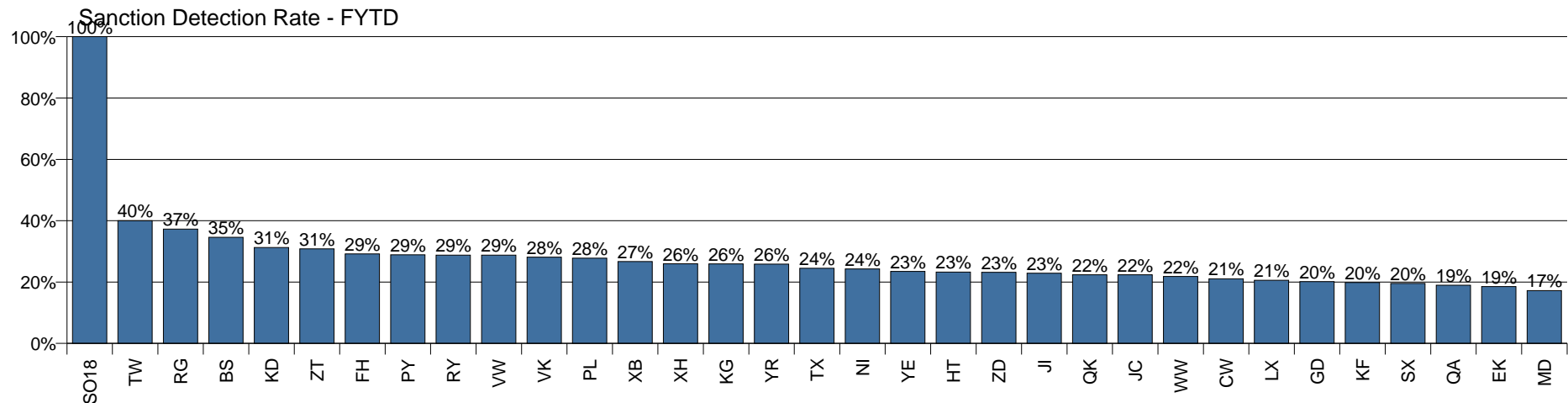
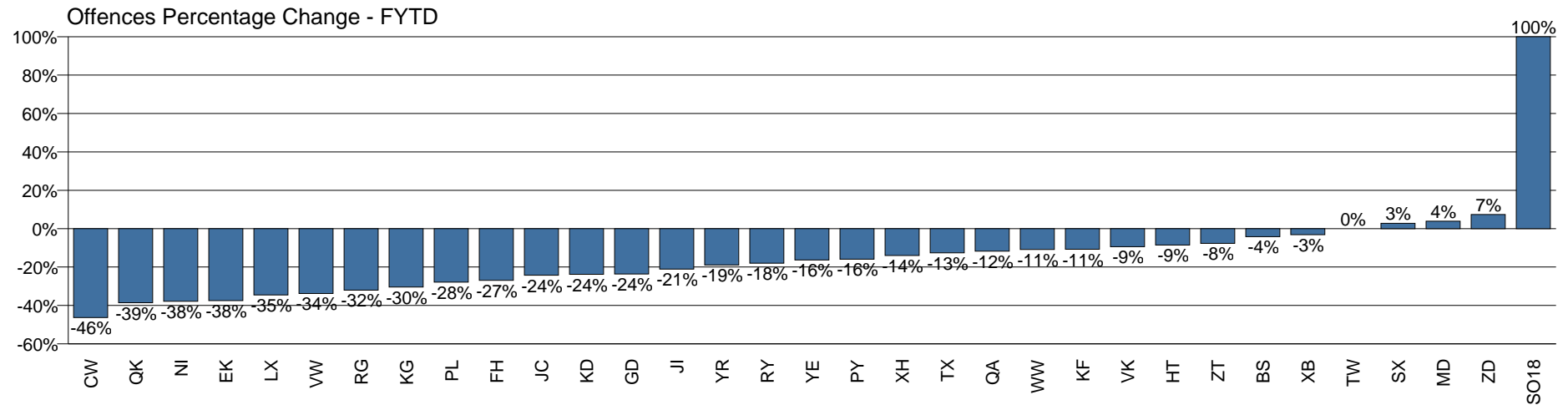
<b>Page 3</b>	Executive Summary
<b>Page 4</b>	Knife Crime by Month
<b>Page 5</b>	Knife Crime Offences and Sanction Detections by APACS Crime Category
<b>Page 6</b>	Knife Crime Offences and Sanction Detections by BOCU
<b>Page 7</b>	Victims and People Proceeded Against for Knife Crime
<b>Page 8</b>	Domestic Violence Knife Crime Offences and Sanction Detections by APACS Crime Category
<b>Page 9</b>	Domestic Violence Knife Crime Offences and Sanction Detections by BOCU
<b>Page 10</b>	Victims and People Proceeded Against for Domestic Violence Knife Crime
<b>Page 11</b>	Knife Murders by Month
<b>Page 12</b>	Knife Crime Victims by Injury Class
<b>Page 13</b>	Possession of Knife
<b>Page 14</b>	People Proceeded Against for Possession of Knife by Proceedings Type
<b>Page 15</b>	People Proceeded Against for Possession of Knife by BOCU
<b>Page 16</b>	People Proceeded Against for Use of Knife by Proceedings Type
<b>Page 17</b>	People Proceeded Against for Use of Knife by BOCU

## Executive Summary

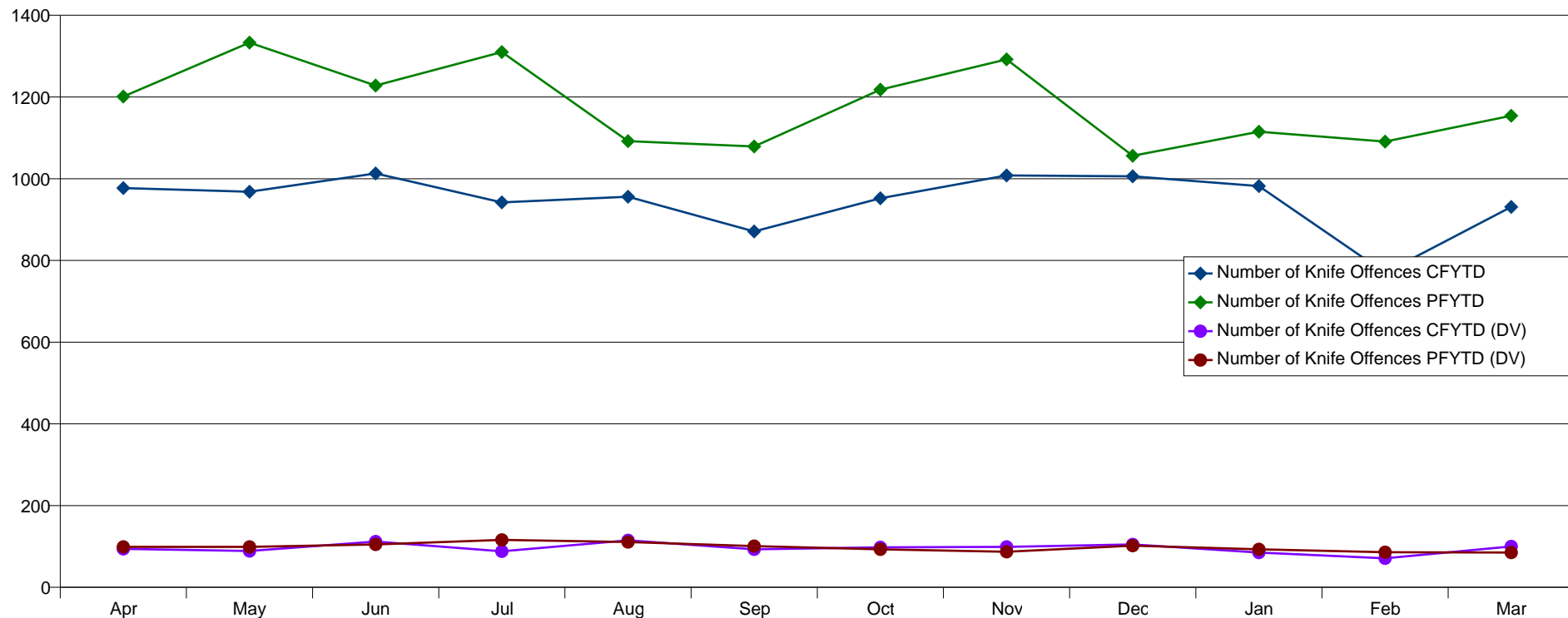
Financial Year to Date 2012/13 - Calculated from 1 April 2012 to 31 March 2013.

There have been 11376 knife crime offences in the financial year to date, a decrease of 19.7% on the previous financial year to date 2011/12.

The highest number of knife crime offences was in Southwark (953) and the lowest was in Kingston-upon-Thames (96) excluding Heathrow (2).



## Knife Crime by Month



Offences	Apr	May	Jun	Jul	Aug	Sep	Oct	Nov	Dec	Jan	Feb	Mar	FYTD Total
2011/12	1201	1333	1228	1310	1092	1079	1218	1292	1056	1115	1091	1154	14169
2012/13	977	968	1013	942	956	871	952	1008	1006	982	770	931	11376
% Change	-18.7%	-27.4%	-17.5%	-28.1%	-12.5%	-19.3%	-21.8%	-22.0%	-4.7%	-11.9%	-29.4%	-19.3%	-19.7%

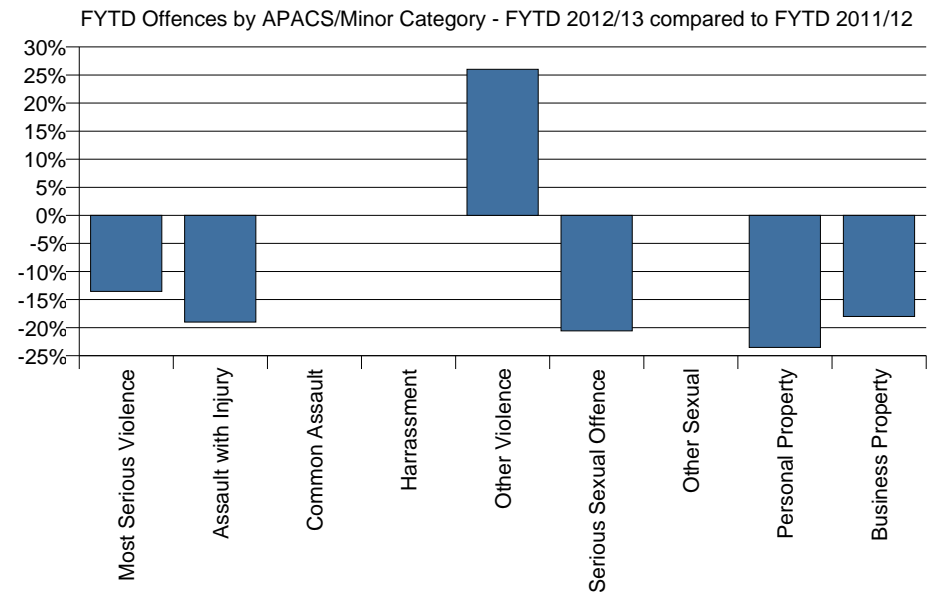
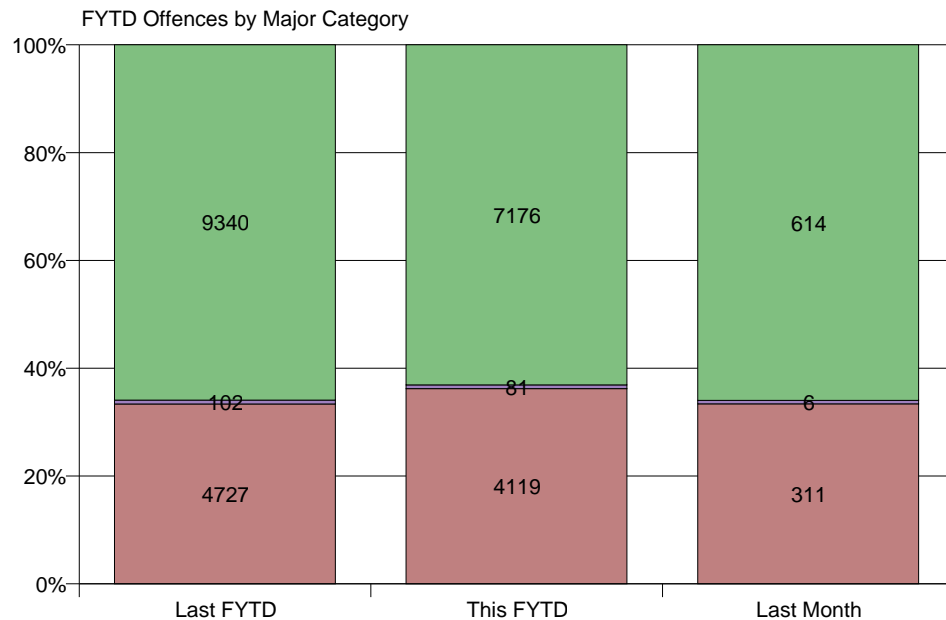
DV Offences	Apr	May	Jun	Jul	Aug	Sep	Oct	Nov	Dec	Jan	Feb	Mar	FYTD Total
2011/12	99	99	105	116	111	101	93	87	102	93	86	85	1177
2012/13	94	89	112	88	115	93	98	99	105	85	71	100	1149
% Change	-5.1%	-10.1%	6.7%	-24.1%	3.6%	-7.9%	5.4%	13.8%	2.9%	-8.6%	-17.4%	17.6%	-2.4%

DV as % of total KEC	9.6%	9.2%	11.1%	9.3%	12.0%	10.7%	10.3%	9.8%	10.4%	8.7%	9.2%	10.7%	10.1%
----------------------	------	------	-------	------	-------	-------	-------	------	-------	------	------	-------	-------

FYTD Totals are calculated from 1 April

## Knife Crime Offences and Sanction Detections by APACS Crime Category

Major Category	Minor Category	March 2013			Offences			Sanction Detections		Sanction Detection Rate	
		Offences	Sanction Detections	Sanction Detection Rate	FYTD 2011/12	FYTD 2012/13	% Change	FYTD 2011/12	FYTD 2012/13	FYTD 2011/12	FYTD 2012/13
Violence Against the Person	Most Serious Violence	187	57	30.5%	2663	2302	-13.6%	955	796	35.9%	34.6%
	Assault with Injury	84	28	33.3%	1741	1410	-19.0%	617	505	35.4%	35.8%
	Common Assault	0	0	n/a	0	0	n/a	0	0	n/a	n/a
	Harrassment	0	0	n/a	0	0	n/a	0	0	n/a	n/a
	Other Violence	40	25	62.5%	323	407	26.0%	133	199	41.2%	48.9%
<b>Violence Against the Person</b>	<b>SubTotal</b>	<b>311</b>	<b>110</b>	<b>35.4%</b>	<b>4727</b>	<b>4119</b>	<b>-12.9%</b>	<b>1705</b>	<b>1500</b>	<b>36.1%</b>	<b>36.4%</b>
Sexual Offences	Serious Sexual Offences	6	2	33.3%	102	81	-20.6%	36	26	35.3%	32.1%
	Other Sexual	0	0	n/a	0	0	n/a	0	0	n/a	n/a
<b>Sexual Offences</b>	<b>SubTotal</b>	<b>6</b>	<b>2</b>	<b>33.3%</b>	<b>102</b>	<b>81</b>	<b>-20.6%</b>	<b>36</b>	<b>26</b>	<b>35.3%</b>	<b>32.1%</b>
Robbery	Personal Property	567	75	13.2%	8757	6698	-23.5%	1343	1060	15.3%	15.8%
	Business Property	47	13	27.7%	583	478	-18.0%	150	112	25.7%	23.4%
<b>Robbery</b>	<b>SubTotal</b>	<b>614</b>	<b>88</b>	<b>14.3%</b>	<b>9340</b>	<b>7176</b>	<b>-23.2%</b>	<b>1493</b>	<b>1172</b>	<b>16.0%</b>	<b>16.3%</b>
<b>Total</b>		<b>931</b>	<b>200</b>	<b>21.5%</b>	<b>14169</b>	<b>11376</b>	<b>-19.7%</b>	<b>3234</b>	<b>2698</b>	<b>22.8%</b>	<b>23.7%</b>



## Knife Crime Offences and Sanction Detections by BOCU

MPS	March 2013			Offences			Sanction Detections		Sanction Detection Rate	
	Offences	Sanction Detections	Sanction Detection Rate	FYTD 2011/12	FYTD 2012/13	% Change	FYTD 2011/12	FYTD 2012/13	FYTD 2011/12	FYTD 2012/13
Brent	42	5	11.9%	575	353	-38.6%	115	79	20.0%	22.4%
Croydon	63	15	23.8%	566	608	7.4%	105	141	18.6%	23.2%
Ealing	38	8	21.1%	503	487	-3.2%	103	130	20.5%	26.7%
Hackney	40	8	20.0%	507	387	-23.7%	135	78	26.6%	20.2%
Haringey	52	19	36.5%	554	449	-19.0%	127	116	22.9%	25.8%
Lambeth	60	14	23.3%	1010	661	-34.6%	182	136	18.0%	20.6%
Lewisham	34	7	20.6%	674	486	-27.9%	164	135	24.3%	27.8%
Newham	56	11	19.6%	762	680	-10.8%	158	135	20.7%	19.9%
Southwark	83	12	14.5%	917	953	3.9%	161	164	17.6%	17.2%
Tower Hamlets	36	10	27.8%	630	576	-8.6%	152	134	24.1%	23.3%
Waltham Forest	26	5	19.2%	602	456	-24.3%	79	102	13.1%	22.4%
Barking & Dagenham	23	6	26.1%	460	320	-30.4%	97	83	21.1%	25.9%
Barnet	31	4	12.9%	393	404	2.8%	78	79	19.8%	19.6%
Bexley	15	0	n/a	161	132	-18.0%	77	38	47.8%	28.8%
Bromley	24	6	25.0%	276	232	-15.9%	114	67	41.3%	28.9%
Camden	21	2	9.5%	440	275	-37.5%	105	51	23.9%	18.5%
City of Westminster	32	4	12.5%	637	342	-46.3%	124	72	19.5%	21.1%
Enfield	22	4	18.2%	514	430	-16.3%	100	101	19.5%	23.5%
Greenwich	18	6	33.3%	399	271	-32.1%	137	101	34.3%	37.3%
Hammersmith & Fulham	15	3	20.0%	286	209	-26.9%	87	61	30.4%	29.2%
Harrow	14	3	21.4%	221	195	-11.8%	78	37	35.3%	19.0%
Havering	9	1	11.1%	231	176	-23.8%	68	55	29.4%	31.3%
Hillingdon	22	4	18.2%	336	289	-14.0%	103	75	30.7%	26.0%
Hounslow	36	4	11.1%	341	298	-12.6%	76	73	22.3%	24.5%
Islington	18	4	22.2%	544	338	-37.9%	123	82	22.6%	24.3%
Kensington & Chelsea	22	11	50.0%	166	159	-4.2%	33	55	19.9%	34.6%
Kingston-upon-Thames	5	3	60.0%	106	96	-9.4%	39	27	36.8%	28.1%
Merton	16	3	18.8%	299	198	-33.8%	49	57	16.4%	28.8%
Redbridge	17	5	29.4%	432	341	-21.1%	106	78	24.5%	22.9%
Richmond-upon-Thames	9	1	11.1%	100	100	0.0%	25	40	25.0%	40.0%
Sutton	9	2	22.2%	130	120	-7.7%	39	37	30.0%	30.8%
Wandsworth	23	10	43.5%	396	353	-10.9%	94	77	23.7%	21.8%
Heathrow	0	0	n/a	1	2	100.0%	1	2	100.0%	100.0%
<b>Total</b>	<b>931</b>	<b>200</b>	<b>21.5%</b>	<b>14169</b>	<b>11376</b>	<b>-19.7%</b>	<b>3234</b>	<b>2698</b>	<b>22.8%</b>	<b>23.7%</b>

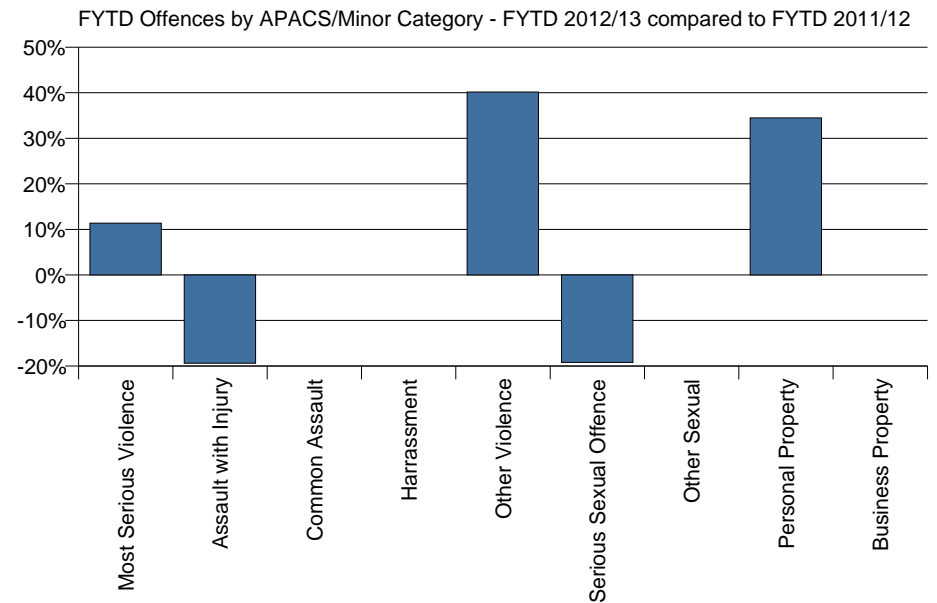
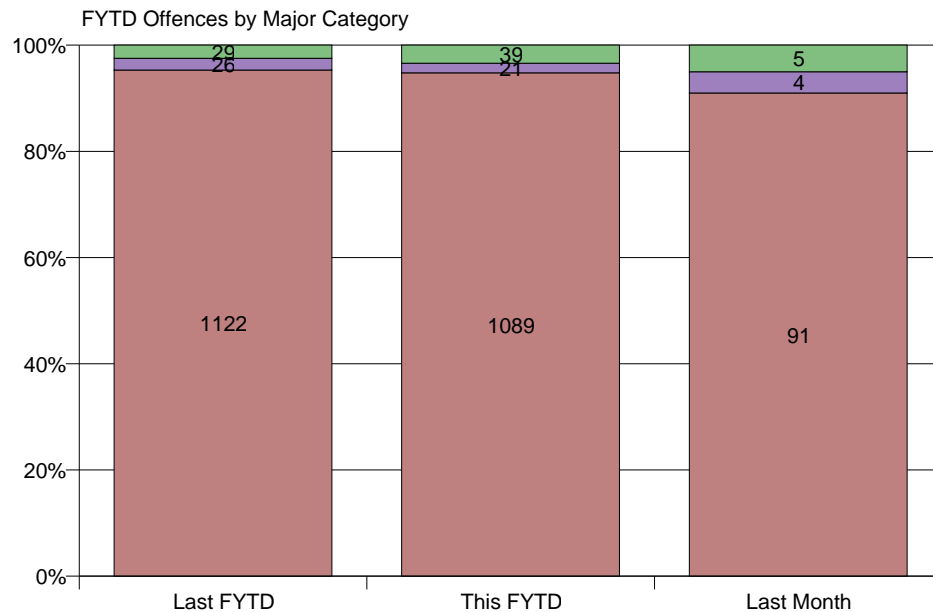
### Victims and People Proceeded Against for Knife Crime

Victims FYTD	10-16	17-19	20-24	25-39	40-49	50-59	60+	Unrecorded	Total
White	565	370	529	915	268	141	72	58	2918
Mixed	50	28	34	34	8	4	0	2	160
Black or Black British	274	141	190	362	123	39	16	23	1168
Asian or Asian British	219	135	243	561	125	62	36	29	1410
Chinese or Other Ethnic Minority Group	47	28	45	73	30	13	5	8	249
Not Stated	1056	768	1030	1771	587	236	116	576	6140
<b>Total</b>	<b>2211</b>	<b>1470</b>	<b>2071</b>	<b>3716</b>	<b>1141</b>	<b>495</b>	<b>245</b>	<b>696</b>	<b>12045</b>

People Proceeded Against FYTD	10-16	17-19	20-24	25-39	40-49	50-59	60+	Unrecorded	Total
White	119	136	134	363	160	65	16	9	1002
Mixed	59	61	32	29	4	1	0	2	188
Black or Black British	265	308	198	272	94	28	9	10	1184
Asian or Asian British	57	54	44	100	34	10	3	9	311
Chinese or Other Ethnic Minority Group	23	15	19	18	9	5	2	2	93
Not Stated	11	16	22	31	15	3	2	4	104
<b>Total</b>	<b>534</b>	<b>590</b>	<b>449</b>	<b>813</b>	<b>316</b>	<b>112</b>	<b>32</b>	<b>36</b>	<b>2882</b>

## Domestic Violence Knife Crime Offences and Sanction Detections by APACS Crime Category

Major Category	Minor Category	March 2013			Offences			Sanction Detections		Sanction Detection Rate	
		Offences	Sanction Detections	Sanction Detection Rate	FYTD 2011/12	FYTD 2012/13	% Change	FYTD 2011/12	FYTD 2012/13	FYTD 2011/12	FYTD 2012/13
Violence Against the Person	Most Serious Violence	34	16	47.1%	325	362	11.4%	214	215	65.8%	59.4%
	Assault with Injury	32	14	43.8%	655	528	-19.4%	347	249	53.0%	47.2%
	Common Assault	0	0	n/a	0	0	n/a	0	0	n/a	n/a
	Harrassment	0	0	n/a	0	0	n/a	0	0	n/a	n/a
	Other Violence	25	16	64.0%	142	199	40.1%	74	118	52.1%	59.3%
<b>Violence Against the Person</b>	<b>SubTotal</b>	<b>91</b>	<b>46</b>	<b>50.5%</b>	<b>1122</b>	<b>1089</b>	<b>-2.9%</b>	<b>635</b>	<b>582</b>	<b>56.6%</b>	<b>53.4%</b>
Sexual Offences	Serious Sexual Offences	4	1	25.0%	26	21	-19.2%	13	7	50.0%	33.3%
	Other Sexual	0	0	n/a	0	0	n/a	0	0	n/a	n/a
<b>Sexual Offences</b>	<b>SubTotal</b>	<b>4</b>	<b>1</b>	<b>25.0%</b>	<b>26</b>	<b>21</b>	<b>-19.2%</b>	<b>13</b>	<b>7</b>	<b>50.0%</b>	<b>33.3%</b>
Robbery	Personal Property	5	2	40.0%	29	39	34.5%	19	19	65.5%	48.7%
	Business Property	0	0	n/a	0	0	n/a	0	0	n/a	n/a
<b>Robbery</b>	<b>SubTotal</b>	<b>5</b>	<b>2</b>	<b>40.0%</b>	<b>29</b>	<b>39</b>	<b>34.5%</b>	<b>19</b>	<b>19</b>	<b>65.5%</b>	<b>48.7%</b>
<b>Total</b>		<b>100</b>	<b>49</b>	<b>49.0%</b>	<b>1177</b>	<b>1149</b>	<b>-2.4%</b>	<b>667</b>	<b>608</b>	<b>56.7%</b>	<b>52.9%</b>





## Domestic Violence Knife Crime Offences and Sanction Detections by BOCU

MPS	March 2013			Offences			Sanction Detections		Sanction Detection Rate	
BOCU Name	Offences	Sanction Detections	Sanction Detection Rate	FYTD 2011/12	FYTD 2012/13	% Change	FYTD 2011/12	FYTD 2012/13	FYTD 2011/12	FYTD 2012/13
Brent	4	0	n/a	48	40	-16.7%	19	20	39.6%	50.0%
Croydon	3	1	33.3%	62	53	-14.5%	42	31	67.7%	58.5%
Ealing	5	2	40.0%	52	48	-7.7%	28	25	53.8%	52.1%
Hackney	6	4	66.7%	52	47	-9.6%	41	21	78.8%	44.7%
Haringey	8	5	62.5%	38	35	-7.9%	24	18	63.2%	51.4%
Lambeth	6	4	66.7%	53	45	-15.1%	32	18	60.4%	40.0%
Lewisham	6	2	33.3%	56	52	-7.1%	31	30	55.4%	57.7%
Newham	6	3	50.0%	51	63	23.5%	25	29	49.0%	46.0%
Southwark	8	8	100.0%	46	64	39.1%	19	37	41.3%	57.8%
Tower Hamlets	2	2	100.0%	51	34	-33.3%	28	18	54.9%	52.9%
Waltham Forest	5	1	20.0%	34	46	35.3%	12	20	35.3%	43.5%
Barking & Dagenham	7	3	42.9%	44	48	9.1%	29	27	65.9%	56.3%
Barnet	0	1	n/a	29	28	-3.4%	18	15	62.1%	53.6%
Bexley	2	0	n/a	19	26	36.8%	10	16	52.6%	61.5%
Bromley	4	2	50.0%	37	52	40.5%	25	29	67.6%	55.8%
Camden	0	0	n/a	28	23	-17.9%	16	14	57.1%	60.9%
City of Westminster	0	0	n/a	22	20	-9.1%	7	12	31.8%	60.0%
Enfield	1	1	100.0%	39	45	15.4%	19	27	48.7%	60.0%
Greenwich	6	5	83.3%	55	36	-34.5%	35	24	63.6%	66.7%
Hammersmith & Fulham	2	0	n/a	16	23	43.8%	6	15	37.5%	65.2%
Harrow	1	1	100.0%	34	22	-35.3%	23	13	67.6%	59.1%
Havering	1	0	n/a	22	25	13.6%	12	14	54.5%	56.0%
Hillingdon	2	0	n/a	53	45	-15.1%	33	23	62.3%	51.1%
Hounslow	8	1	12.5%	47	45	-4.3%	22	19	46.8%	42.2%
Islington	1	0	n/a	41	32	-22.0%	27	18	65.9%	56.3%
Kensington & Chelsea	1	0	n/a	5	13	160.0%	1	9	20.0%	69.2%
Kingston-upon-Thames	1	1	100.0%	13	11	-15.4%	8	5	61.5%	45.5%
Merton	1	1	100.0%	20	24	20.0%	13	14	65.0%	58.3%
Redbridge	0	0	n/a	31	43	38.7%	15	20	48.4%	46.5%
Richmond-upon-Thames	0	0	n/a	14	14	0.0%	8	8	57.1%	57.1%
Sutton	2	0	n/a	25	21	-16.0%	15	7	60.0%	33.3%
Wandsworth	1	1	100.0%	40	26	-35.0%	24	12	60.0%	46.2%
<b>Total</b>	<b>100</b>	<b>49</b>	<b>49.0%</b>	<b>1177</b>	<b>1149</b>	<b>-2.4%</b>	<b>667</b>	<b>608</b>	<b>56.7%</b>	<b>52.9%</b>

Data is subject to daily change  
Last Refresh Date: 08/04/2013

Performance Helpdesk - 783131  
If there are any queries with this report, please call the Helpdesk  
PD08/1213/12/V1

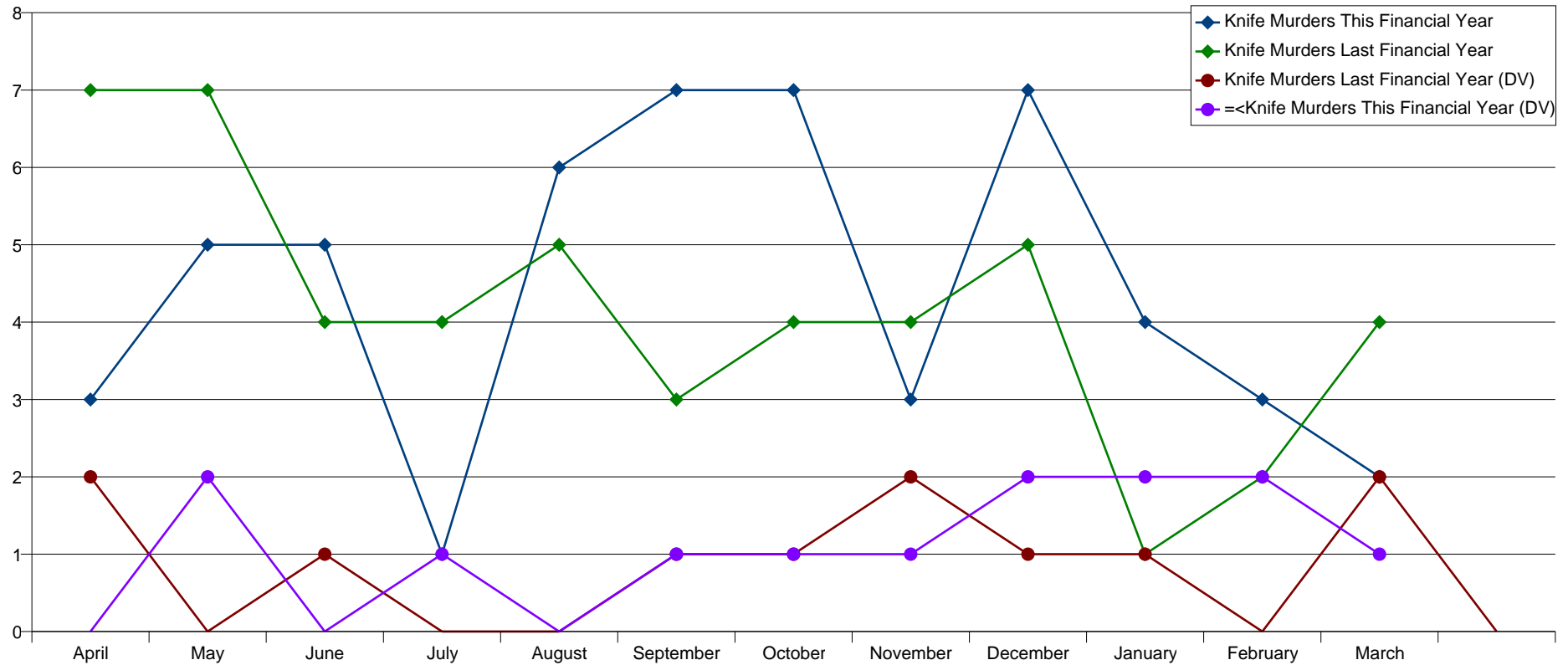
08/04/2013 © MOPAC (2013)  
Page 9

### Victims and People Proceeded Against for Domestic Violence Knife Crime

<b>Victims FYTD</b>	10-16	17-19	20-24	25-39	40-49	50-59	60+	Unrecorded	<b>Total</b>
White	7	18	52	144	66	35	14	8	<b>344</b>
Mixed	0	1	3	8	1	2	0	1	<b>16</b>
Black or Black British	2	5	28	83	29	7	3	4	<b>161</b>
Asian or Asian British	5	2	10	53	16	6	6	8	<b>106</b>
Chinese or Other Ethnic Minority Group	0	0	2	7	5	1	0	0	<b>15</b>
Not Stated	13	33	94	219	114	44	23	24	<b>564</b>
<b>Total</b>	<b>27</b>	<b>59</b>	<b>189</b>	<b>514</b>	<b>231</b>	<b>95</b>	<b>46</b>	<b>45</b>	<b>1206</b>

<b>People Proceeded Against FYTD</b>	10-16	17-19	20-24	25-39	40-49	50-59	60+	Unrecorded	<b>Total</b>
White	1	12	24	119	70	32	9	2	<b>269</b>
Mixed	0	2	4	7	2	0	0	0	<b>15</b>
Black or Black British	1	8	28	75	33	10	1	1	<b>157</b>
Asian or Asian British	0	2	7	36	14	6	3	1	<b>69</b>
Chinese or Other Ethnic Minority Group	0	2	5	6	4	3	2	0	<b>22</b>
Not Stated	0	0	5	14	7	2	1	1	<b>30</b>
<b>Total</b>	<b>2</b>	<b>26</b>	<b>73</b>	<b>257</b>	<b>130</b>	<b>53</b>	<b>16</b>	<b>5</b>	<b>562</b>

## Knife Murders by Month



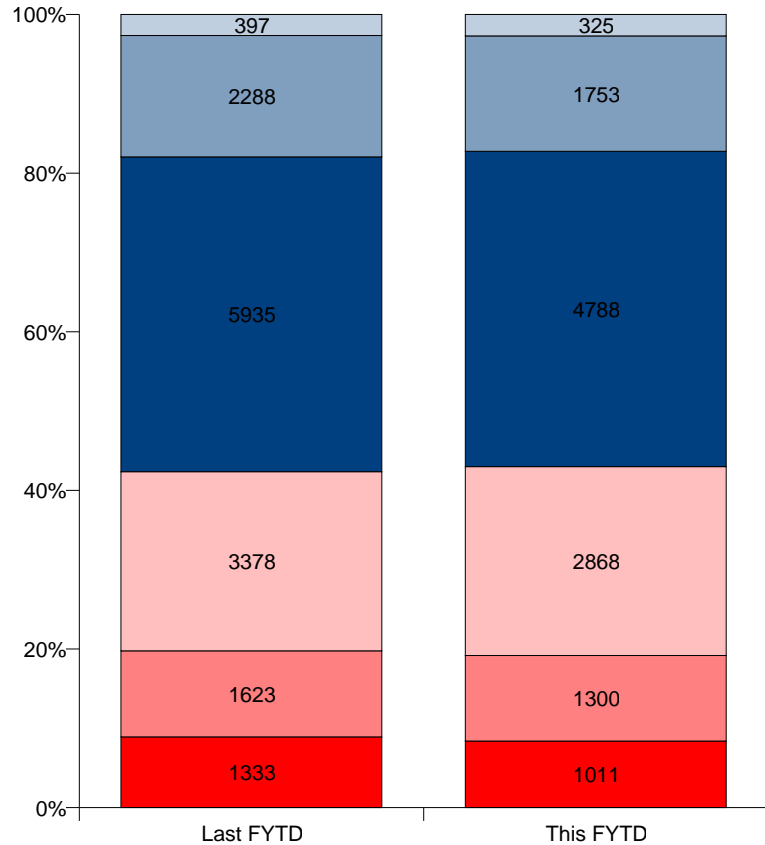
Knife Murders	April	May	June	July	August	September	October	November	December	January	February	March	FYTD Total
2011/12	7	7	4	4	5	3	4	4	5	1	2	4	50
2012/13	3	5	5	1	6	7	7	3	7	4	3	2	53
% Change	-57.1%	-28.6%	25.0%	-75.0%	20.0%	133.3%	75.0%	-25.0%	40.0%	300.0%	50.0%	-50.0%	6.0%

DV Knife Murders	April	May	June	July	August	September	October	November	December	January	February	March	FYTD Total
2011/12	2	0	1	0	0	1	1	2	1	1	0	2	11
2012/13	0	2	0	1	0	1	1	1	2	2	2	1	13
% Change	-100.0%	0.0%	-100.0%	0.0%	0.0%	0.0%	0.0%	-50.0%	100.0%	100.0%	0.0%	-50.0%	18.2%

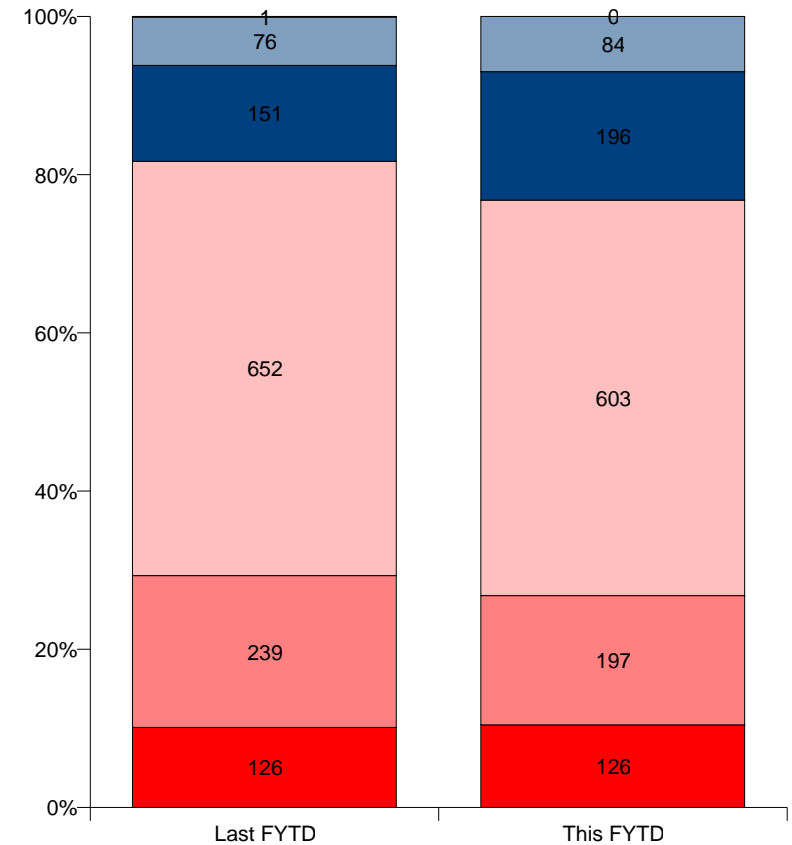
FYTD Totals are calculated from 1 April

## Knife Crime Victims by Injury Class

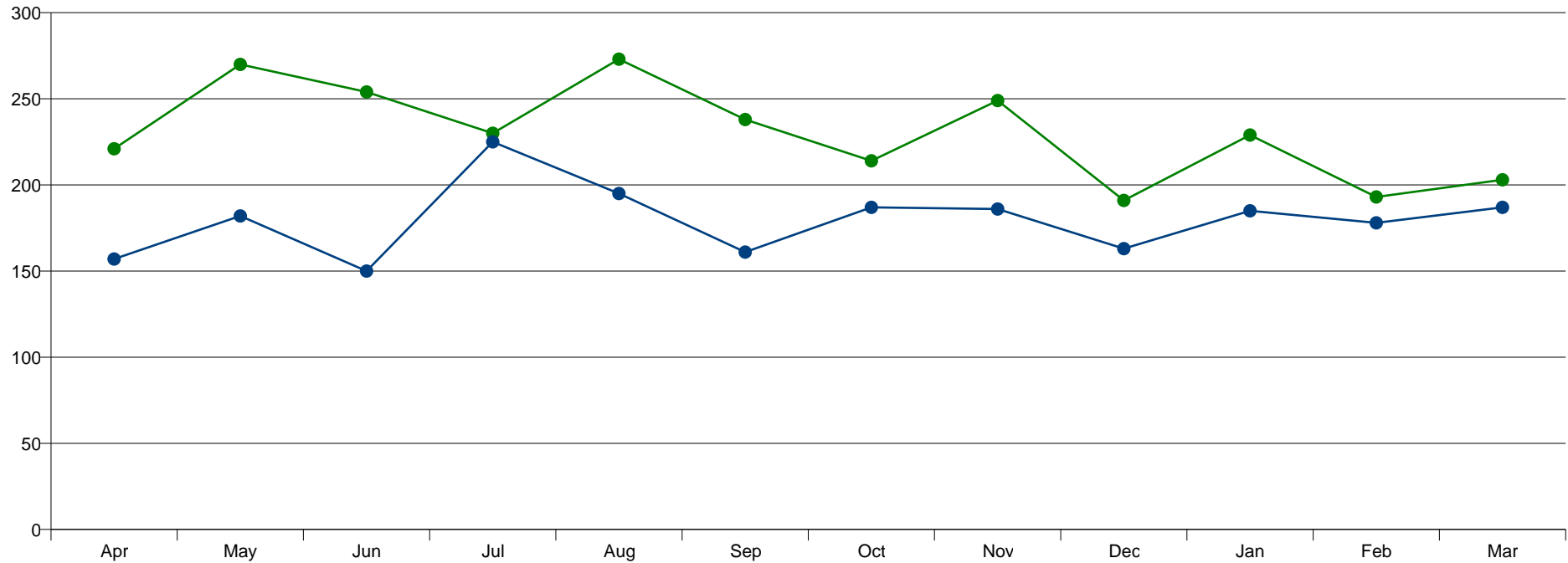
	All Including Domestic Violence	
Injury Class	FYTD 2011/12	FYTD 2012/13
Fatal/Serious	1333	1011
Moderate	1623	1300
Minor	3378	2868
No Injury	5935	4788
Threats Only	2288	1753
Not Recorded	397	325
<b>Total</b>	<b>14954</b>	<b>12045</b>



	Only Domestic Violence	
Injury Class	FYTD 2011/12	FYTD 2012/13
Fatal/Serious	126	126
Moderate	239	197
Minor	652	603
No Injury	151	196
Threats Only	76	84
Not Recorded	1	0
	<b>1245</b>	<b>1206</b>



### Possession of Knife



Sanction Detections	Apr	May	Jun	Jul	Aug	Sep	Oct	Nov	Dec	Jan	Feb	Mar	FYTD Total
2011/12	221	270	254	230	273	238	214	249	191	229	193	203	2765
2012/13	157	182	150	225	195	161	187	186	163	185	178	187	2156
% Change	-29.0%	-32.6%	-40.9%	-2.2%	-28.6%	-32.4%	-12.6%	-25.3%	-14.7%	-19.2%	-7.8%	-7.9%	-22.0%

FTYD Totals are calculated from 1 April

People Proceeded Against	10-16	17-19	20-24	25-39	40-49	50-59	60+	Unrecorded	Total
White	120	100	128	305	139	62	18	2	874
Mixed	52	44	29	28	10	4	0	0	167
Black or Black British	208	200	113	138	78	22	6	1	766
Asian or Asian British	34	32	21	42	14	4	1	0	148
Chinese or Other Ethnic Minority Group	7	5	12	19	3	5	0	0	51
Not Stated	6	9	15	26	10	12	0	1	79
<b>Total</b>	<b>427</b>	<b>390</b>	<b>318</b>	<b>558</b>	<b>254</b>	<b>109</b>	<b>25</b>	<b>4</b>	<b>2085</b>

### People Proceeded Against for Possession of Knife by Proceedings Type

<b>2011/12</b>	Apr	May	Jun	Jul	Aug	Sep	Oct	Nov	Dec	Jan	Feb	Mar	<b>FYTD Total</b>	<b>%</b>
Adult Charge	129	180	179	158	187	176	160	185	128	156	117	136	<b>1891</b>	<b>71.2%</b>
Youth Charge	49	49	51	39	32	38	29	42	35	39	47	50	<b>500</b>	<b>18.8%</b>
BJ - Adult Caution	21	19	16	12	22	11	10	9	12	18	12	11	<b>173</b>	<b>6.5%</b>
BD - Youth Warning 2	0	1	1	2	1	1	2	1	1	1	1	0	<b>12</b>	<b>0.5%</b>
BC - Youth warning 2	1	3	3	3	1	1	1	0	0	2	2	1	<b>18</b>	<b>0.7%</b>
BA - Youth Reprimand	3	7	1	4	3	3	2	1	3	1	3	0	<b>31</b>	<b>1.2%</b>
BB - Youth Warning 1	6	1	2	3	4	1	2	2	0	2	5	2	<b>30</b>	<b>1.1%</b>
<b>Total</b>	<b>209</b>	<b>260</b>	<b>253</b>	<b>221</b>	<b>250</b>	<b>231</b>	<b>206</b>	<b>240</b>	<b>179</b>	<b>219</b>	<b>187</b>	<b>200</b>	<b>2655</b>	<b>100.0%</b>

<b>2012/13</b>	Apr	May	Jun	Jul	Aug	Sep	Oct	Nov	Dec	Jan	Feb	Mar	<b>FYTD Total</b>	<b>%</b>
Adult Charge	109	118	100	151	136	114	130	131	112	133	124	119	<b>1477</b>	<b>70.8%</b>
Youth Charge	27	46	31	38	26	27	37	28	21	26	32	31	<b>370</b>	<b>17.7%</b>
BJ - Adult Caution	11	9	11	23	19	7	15	19	16	12	14	15	<b>171</b>	<b>8.2%</b>
BD - Youth Warning 2	1	0	0	0	0	0	0	0	1	0	0	2	<b>4</b>	<b>0.2%</b>
BC - Youth warning 2	2	0	3	1	3	1	1	1		2	2	4	<b>20</b>	<b>1.0%</b>
BA - Youth Reprimand	1	5	2	2	2	1	2	2	1	3	0	1	<b>22</b>	<b>1.1%</b>
BB - Youth Warning 1	0	0	2	3	3	0	1	0	1	3	4	4	<b>21</b>	<b>1.0%</b>
<b>Total</b>	<b>151</b>	<b>178</b>	<b>149</b>	<b>218</b>	<b>189</b>	<b>150</b>	<b>186</b>	<b>181</b>	<b>152</b>	<b>179</b>	<b>176</b>	<b>176</b>	<b>2085</b>	<b>100.0%</b>

### People Proceeded Against for Possession of Knife by BOCU

BOCU Name	Adult Charge	Youth Charge	BJ - Adult Caution	BD - Youth Warning 2 Year +	BC - Youth warning 2nd Offence	BA - Youth Reprimand 1st Offence	BB - Youth Warning 1st Offence	Total	Charge Rate
Brent	65	13	12	0	0	1	0	91	85.7%
Croydon	89	25	5	0	1	1	0	121	94.2%
Ealing	47	6	5	0	1	0	3	62	85.5%
Hackney	51	18	5	0	2	0	0	76	90.8%
Haringey	51	20	3	0	0	1	0	75	94.7%
Lambeth	85	26	4	0	0	2	1	118	94.1%
Lewisham	68	24	4	0	0	0	0	96	95.8%
Newham	69	21	2	2	2	0	1	97	92.8%
Southwark	119	34	5	0	1	1	2	162	94.4%
Tower Hamlets	48	12	7	0	1	2	0	70	85.7%
Waltham Forest	53	19	2	0	2	0	2	78	92.3%
Barking & Dagenham	30	13	5	0	1	0	1	50	86.0%
Barnet	29	8	2	1	1	1	0	42	88.1%
Bexley	16	4	4	0	0	0	0	24	83.3%
Bromley	38	8	9	0	0	0	0	55	83.6%
Camden	60	7	9	1	2	0	0	79	84.8%
City of Westminster	71	11	12	0	0	2	0	96	85.4%
Enfield	48	16	2	0	0	1	1	68	94.1%
Greenwich	42	6	4	0	1	1	0	54	88.9%
Hammersmith & Fulham	56	14	5	0	0	0	0	75	93.3%
Harrow	22	1	0	0	1	1	0	25	92.0%
Havering	31	0	2	0	0	0	0	33	93.9%
Hillingdon	34	5	3	0	0	0	0	42	92.9%
Hounslow	26	7	4	0	0	2	1	40	82.5%
Islington	62	20	6	0	1	0	1	90	91.1%
Kensington & Chelsea	31	7	3	0	0	0	0	41	92.7%
Kingston-upon-Thames	9	6	3	0	0	1	2	21	71.4%
Merton	24	6	9	0	1	1	2	43	69.8%
Redbridge	41	4	4	0	0	0	2	51	88.2%
Richmond-upon-Thames	7	0	4	0	1	1	0	13	53.8%
Sutton	17	1	5	0	0	0	0	23	78.3%
Wandsworth	35	8	2	0	1	2	2	50	86.0%
Aviation Security	3	0	20	0	0	1	0	24	12.5%
<b>Total</b>	<b>1477</b>	<b>370</b>	<b>171</b>	<b>4</b>	<b>20</b>	<b>22</b>	<b>21</b>	<b>2085</b>	<b>88.6%</b>

### People Proceeded Against for Use of Knife by Proceedings Type

2011/12	Apr	May	Jun	Jul	Aug	Sep	Oct	Nov	Dec	Jan	Feb	Mar	FYTD Total	%
Adult Charge	269	292	284	299	335	287	298	302	237	266	267	285	3421	71.3%
Youth Charge	83	120	98	76	82	68	80	65	63	61	85	98	979	20.4%
TIC	7	11	6	8	0	9	0	8	15	0	8	2	74	1.5%
BJ - Adult Caution	22	30	21	27	22	21	25	24	16	22	16	16	262	5.5%
BB - Youth Warning 1	0	0	3	1	2	1	0	1	2	1	3	2	16	0.3%
BC - Youth warning 2	3	0	2	0	3	2	0	0	1	2	1	1	15	0.3%
BA - Youth Reprimand	0	1	4	1	1	1	0	0	2	1	5	1	17	0.4%
EA - Fixed Penalty No	1	0	2	0	1	0	0	1	1	0	0	0	6	0.1%
BD - Youth Warning 2	0	1	0	0	1	0	0	0	0	0	0	1	3	0.1%
D1 - Accused Dead	0	1	0	0	0	0	0	0	0	0	0	0	1	0.0%
BK - Conditional Caution	0	0	1	0	0	0	0	0	0	0	0	0	1	0.0%
<b>Total</b>	<b>385</b>	<b>456</b>	<b>421</b>	<b>412</b>	<b>447</b>	<b>389</b>	<b>403</b>	<b>401</b>	<b>337</b>	<b>353</b>	<b>385</b>	<b>406</b>	<b>4795</b>	<b>100.0%</b>

2012/13	Apr	May	Jun	Jul	Aug	Sep	Oct	Nov	Dec	Jan	Feb	Mar	FYTD Total	%
Adult Charge	240	202	205	279	276	240	259	246	213	257	211	214	2842	76.2%
Youth Charge	62	53	41	49	37	44	46	43	45	65	58	33	576	15.4%
TIC	8	7	17	13	11	1	6	1		9	6	4	83	2.2%
BJ - Adult Caution	11	16	15	25	24	11	23	10	15	15	15	13	193	5.2%
BB - Youth Warning 1	1		1		2		2				2	3	11	0.3%
BC - Youth warning 2	1	1	1		1		1		1		2		8	0.2%
BA - Youth Reprimand	1				1		1	2	1	2	2		10	0.3%
EA - Fixed Penalty No	1											1	2	0.1%
BD - Youth Warning 2				1	1							1	3	0.1%
D1 - Accused Dead												2	2	0.1%
BK - Conditional Caution								1					1	0.0%
<b>Total</b>	<b>325</b>	<b>279</b>	<b>280</b>	<b>367</b>	<b>353</b>	<b>296</b>	<b>338</b>	<b>303</b>	<b>275</b>	<b>348</b>	<b>296</b>	<b>272</b>	<b>3732</b>	<b>100.0%</b>



### People Proceeded Against for Use of Knife by BOCU

BOCU Name	Adult Charge	Youth Charge	TIC	BJ - Adult Caution	BB - Youth Warning 1st Offence	BC - Youth warning 2nd Offence	BA - Youth Reprimand 1st Offence	EA - Fixed Penalty Notice	BD - Youth Warning 2 Year +	D1 - Accused Dead	BK - Conditional Caution	Total	Charge Rate
Brent	94	19	7	5	0	0	0	0	0	0	0	125	90.4%
Croydon	146	27	21	7	0	2	0	0	1	0	1	205	84.4%
Ealing	141	23	0	9	1	0	1	1	0	0	0	176	93.2%
Hackney	75	19	2	8	0	1	0	0	0	0	0	105	89.5%
Haringey	118	33	3	3	0	0	0	0	0	0	0	157	96.2%
Lambeth	111	49	3	2	0	0	1	0	0	0	0	166	96.4%
Lewisham	143	29	2	8	0	0	0	0	0	0	0	182	94.5%
Newham	152	22	1	20	1	1	2	0	1	0	0	200	87.0%
Southwark	170	27	2	8	0	0	0	0	0	0	0	207	95.2%
Tower Hamlets	145	28	0	4	1	0	0	0	0	1	0	179	96.6%
Waltham Forest	94	16	0	7	2	0	1	0	0	0	0	120	91.7%
Barking & Dagenham	83	24	1	5	0	0	0	0	0	0	0	113	94.7%
Barnet	74	17	14	7	1	1	0	0	0	1	0	115	79.1%
Bexley	52	13	0	8	0	1	0	0	0	0	0	74	87.8%
Bromley	66	7	2	8	0	0	0	0	0	0	0	83	88.0%
Camden	61	8	4	1	0	0	1	0	0	0	0	75	92.0%
City of Westminster	92	16	1	5	0	0	0	0	0	0	0	115	93.9%
Enfield	101	27	0	9	0	0	0	0	0	0	0	137	93.4%
Greenwich	94	15	4	3	1	0	1	0	0	0	0	118	92.4%
Hammersmith & Fulham	74	7	1	10	0	0	0	1	0	0	0	93	87.1%
Harrow	44	6	2	1	0	0	0	0	0	0	0	53	94.3%
Havering	67	10	2	9	0	1	0	0	0	0	0	89	86.5%
Hillingdon	75	17	2	7	0	0	0	0	0	0	0	101	91.1%
Hounslow	108	17	1	6	1	0	0	0	0	0	0	133	94.0%
Islington	111	17	1	2	1	0	0	0	0	0	0	132	97.0%
Kensington & Chelsea	29	18	1	0	0	0	0	0	0	0	0	48	97.9%
Kingston-upon-Thames	33	3	0	1	0	0	0	0	0	0	0	37	97.3%
Merton	53	17	0	2	0	1	0	0	0	0	0	73	95.9%
Redbridge	86	15	0	8	1	0	1	0	0	0	0	111	91.0%
Richmond-upon-Thames	32	4	0	2	1	0	2	0	1	0	0	42	85.7%
Sutton	40	9	0	8	0	0	0	0	0	0	0	57	86.0%
Wandsworth	75	17	6	10	0	0	0	0	0	0	0	108	85.2%
Aviation Security	3	0	0	0	0	0	0	0	0	0	0	3	100.0%
<b>Total</b>	<b>2842</b>	<b>576</b>	<b>83</b>	<b>193</b>	<b>11</b>	<b>8</b>	<b>10</b>	<b>2</b>	<b>3</b>	<b>2</b>	<b>1</b>	<b>3732</b>	<b>91.6%</b>