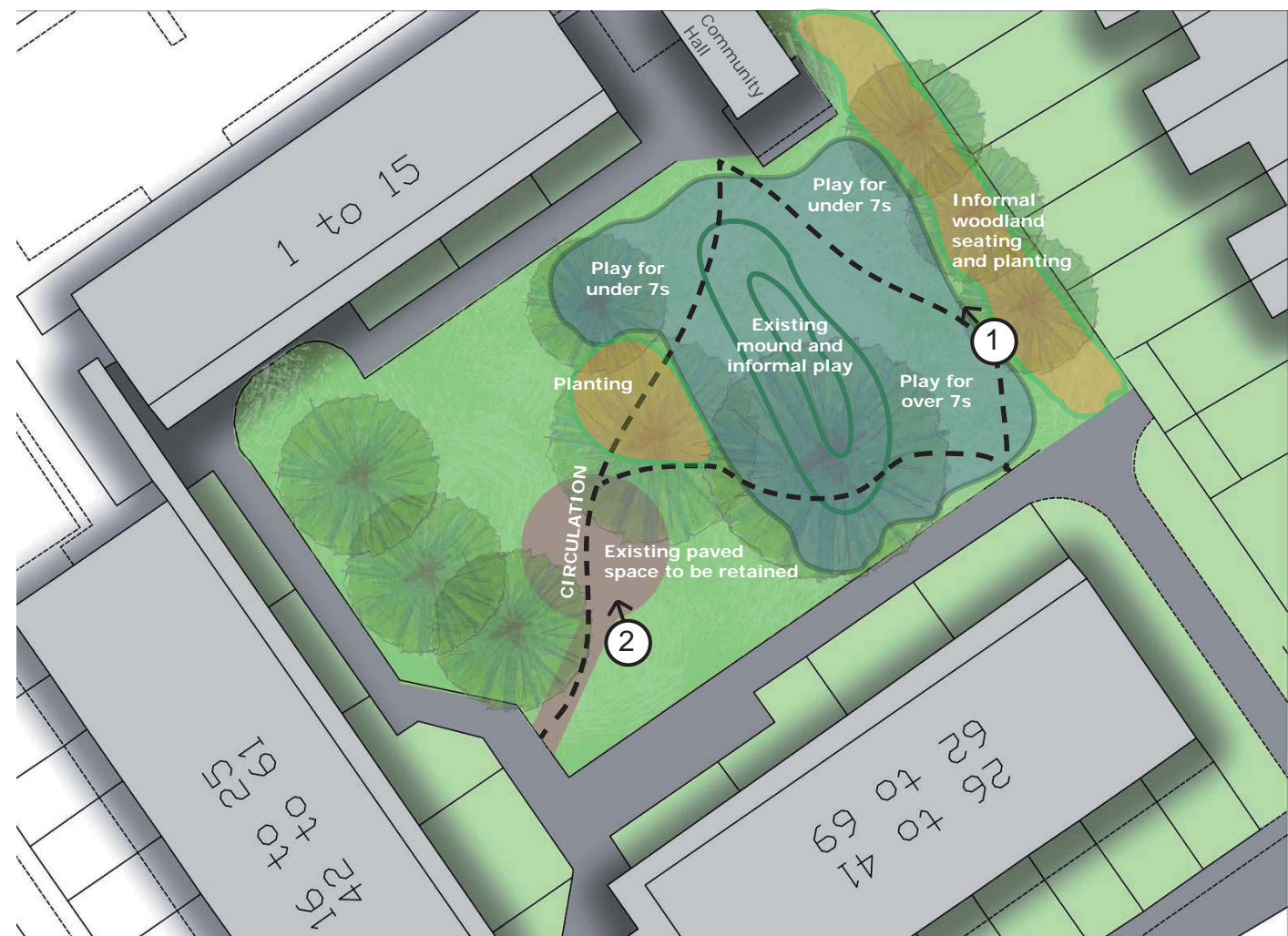


Site plan



Site photos



Proposals

- Removal of existing play area and internal barrier fencing
- Clearing of ivy and potential tree works
- Creation of new play area out from under trees to better integrate with rest of site. New play area to consist of:
  - Mix of play equipment catering to toddlers and children under 7 years
  - Combination of play elements to cater to children over 7 years
  - Playful landscape elements and forms to encourage unstructured play
- Refurbish existing benches
- New planting beds throughout play area to define various spaces
- Informal planting and seating space underneath trees

Estimated total cost: £69,900, inc.

- Capital works (inc. 10% contingency);
- LA and Community Team fees; and
- Maintenance (3 months by Contractor & 9 months by Green Team)

Ideas



Toddler play



Imaginative Play



Woodland seating



Movement play



Interactive sculpture



Border planting