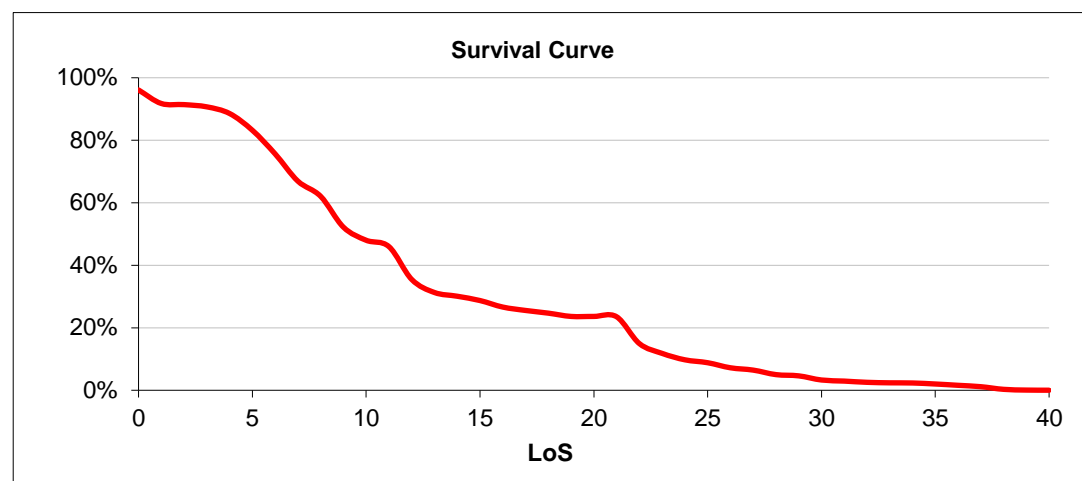


Career Projection for a New Entrant into the General Technician (Electrical) Trade

LoS ¹	% chance of reaching LoS
0	96%
1	92%
2	91%
3	91%
4	89%
5	83%
6	76%
7	67%
8	62%
9	52%
10	48%
11	46%
12	35%
13	31%
14	30%
15	29%
16	27%
17	26%
18	25%
19	24%
20	24%
21	24%
22	15%
23	12%
24	10%
25	9%
26	7%
27	6%
28	5%
29	5%
30	3%
31	3%
32	3%
33	2%
34	2%
35	2%
36	2%
37	1%
38	0%
39	0%
40	0%

	% chance of a New Entrant being promoted to subsequent ranks	Average <i>total</i> length of service on promotion
SAC	91%	1 year 9 months
SAC(T)	90%	3 years 3 months
CPL	51%	7 years 9 months
SGT	20%	15 years 9 months
CHF TECH	11%	21 years 6 months
FS	3%	26 years 8 months
WO	2%	31 years 7 months



¹ 'LoS x' means 'LoS greater than or equal to x but less than x+1'. So 'LoS21', for example, is the chance of personnel serving more than or equal to 21 years but less than 22 years.

Notes:

- These data are based on the seven year span of actual data 2010/11 – 2016/17. By considering a cohort of individuals with the similar characteristics - **New Entrants** into the **Gen Tech E** trade - average career projections have been calculated.
- On promotion to FS, Gen Tech E, Gen Tech (M) and Gen Tech WS personnel join the Gen Eng Tech trade. These figures include projections for all Gen Eng Tech personnel.
- Defence Statistics' career forecasts are not based on the actual experience of any one individual, but rather are based on the historical behaviour of individuals with similar characteristics.