

CHILDREN'S SERVICES DIRECTORATE

DIRECTOR FOR CHILDREN'S SERVICES
John Nash

Head of Children & Families
Jackie Last
(Deputy Director)

Sandra Conroy
Service Manager
Purbeck, Weymouth, Portland
and CAMHS Social Workers

Kevin Stenlake
Service Manager
Christchurch, East Dorset and
Children who are Disabled

Penny Lodwick
Service Manager
North, West and Horizon
Service

Stuart Riddle
Service Manager – Resources

Tanya Foley
Safeguarding Manager

Mike Felstead
Policy Manager – Children who
are disabled
Practice Development

Jim Chamberlain
Policy Manager –
Children Looked After

**Head of Early Intervention
Services**
Les Gardner

Maureen Whitfield
Manager, Early Years &
Childcare Service

Chris Wilson
Locality Manager
Weymouth and Portland/ Purbeck

Karen Pigott
Locality Manager
Christchurch/ East Dorset

Karen Stratford
Locality Manager
North Dorset/ West Dorset

**Head of Learning and School
Improvement**
John England

Rick Baker
Principal Advisor
(Leadership and Management)

Mark Loveys
Principal Advisor
(School Standards)

Jane Stanier
Principal Advisor
(Vulnerable Groups)

Jackie Groves
Head of School Organisation

Margaret Judd
Service Manager
LSI Funding & Efficiency Team

Nichola Pendelbury
Head of Dorset Music Service

Rob Brindley
Head of Outdoor Education

Andy Worth
Head of Dorset Centre of
Educational Technology

Head of Inclusion Services
Helen Squibb

Mike Dishington
Inclusion Manager/ SEN
Strategic Lead

Janet Morris
Principal Educational
Psychologist

Pam Pyke
Head of Children Out of School
Service

Martin Smith
Head of Specialist Teaching
and Advice (interim)

Clive Hawkins
Youth Offending Team
Manager

**Head of Strategic, Planning,
Commissioning and Performance**
Anne Salter

Mark Pritchard
Commissioning and Contracts
Manager

Graham Albertella
Planning & Performance
Manager

Patrick Myers
Strategic Commissioning
Manager

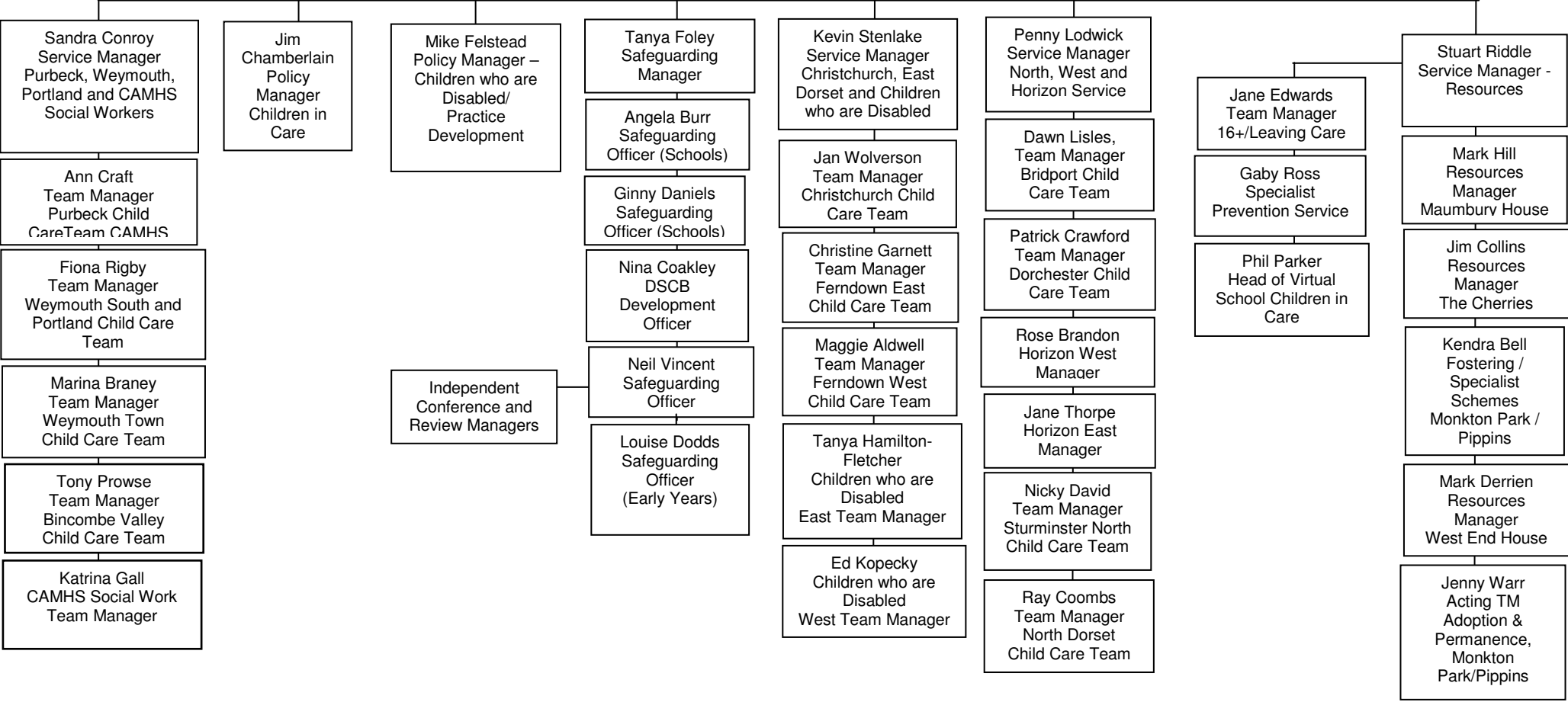
Helen Cheleda
Business Development
Manager

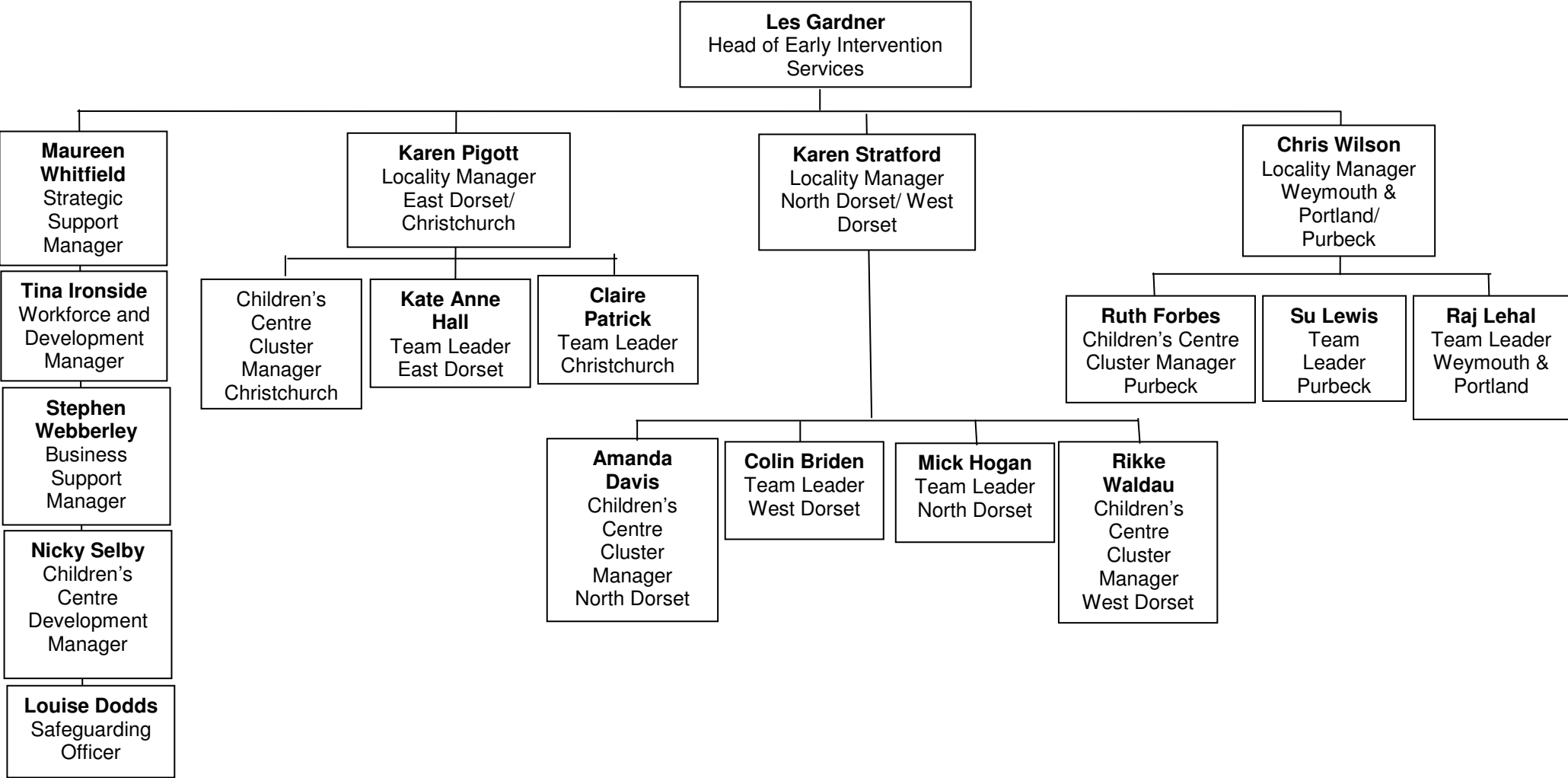
Elizabeth Walker
Business Administration
Manager

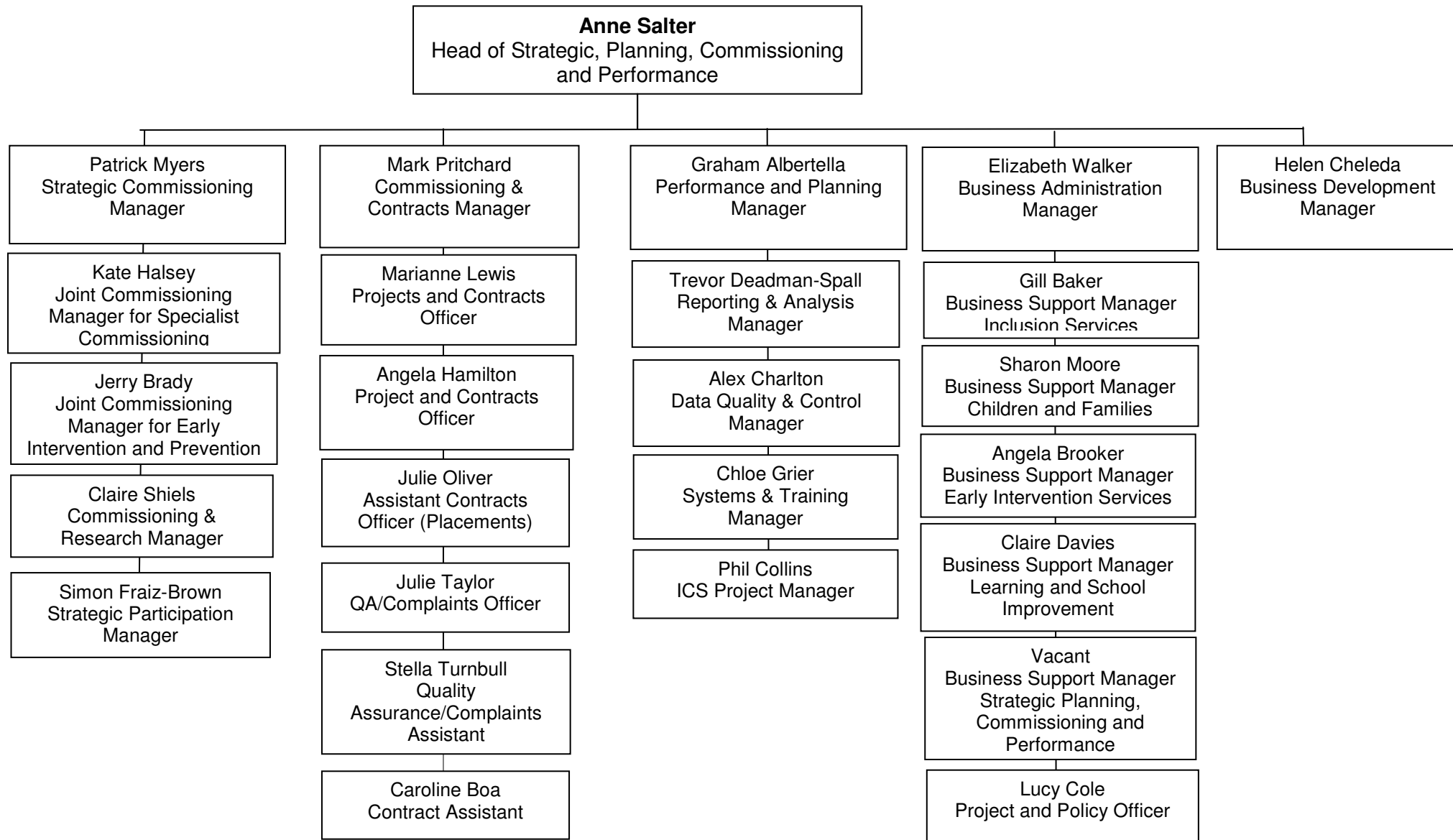
Director for Children's Services

Head of Learning and School Improvement John England	Head of Children & Families Jackie Last	Head of Strategic, Planning, Commissioning and Performance Anne Salter	Head of Early Intervention Services Les Gardner	Head of Inclusion Services Helen Squibb
Strategic Lead: School Improvement and Standards	Strategic Lead: Safeguarding and Children in Care	Strategic Lead: Planning, Commissioning and Performance	Strategic Lead: Early Intervention/Prevention Services	Strategic Lead: Inclusion Integrated Strategy to support Children who are disabled
<ul style="list-style-type: none"> • Special Schools • National Strategies/ National Challenge • School Improvement • 14 – 19 • School Planning and Capital programme inc BSF • School Admissions • Governor Services • Attainment – Children in Care • Music and Outdoor Education • Dorset Teacher Education Programme • Education Workforce Development • Dorset Centre for Educational Technology • School Admin Finance Support and Strategic Finance • Relationships with Headteacher Phase Associations • School Transport • School Workforce Development 	<ul style="list-style-type: none"> • Safeguarding • Family Support • Fostering and adoption • Leaving Care • Residential Care • Children in Need • Children in Care • Virtual School for Children Who Are in Care • Specialist Prevention Services • Children Who Are Disabled (East/West Teams) • Integrated Children's System 	<ul style="list-style-type: none"> • Commissioning Programmes including joint (PCT) and links with Adult Services • Partnership Arrangements Dorset Children's Trust • Business Support for Directorate • Performance Management • Research • Contracts and Procurement • Strategic Commissioning for 16 – 19 education and training • Complaints function • Meeting Future Challenges Programme • Voluntary Sector links • Systems Training • Systems Support • Data quality 	<ul style="list-style-type: none"> • Student Support • Early Years and Childcare Service • District Links • Children's Workforce Development • Children Who Are Disabled (Early Intervention) • Integrated Processes • Locality Management including: • Children's Centres • Youth Services • Education Social Work • Locality Hubs • Family Information Service 	<ul style="list-style-type: none"> • Ethnic Minority and Traveller Achievement Service • Behaviour Support Service • SEN Specialist Service • Hearing and Vision Support Service • Children Out Of School Service and Learning Centres • Exclusions • Youth Offending Team • Educational Psychology Service • Portage Service • SEN Team (SEN Placement & Provision) • Complex Health Needs in School

Jackie Last
Head of Children & Families Services







Head of Learning and School Improvement
John England

