

# **Cambridgeshire Constabulary**

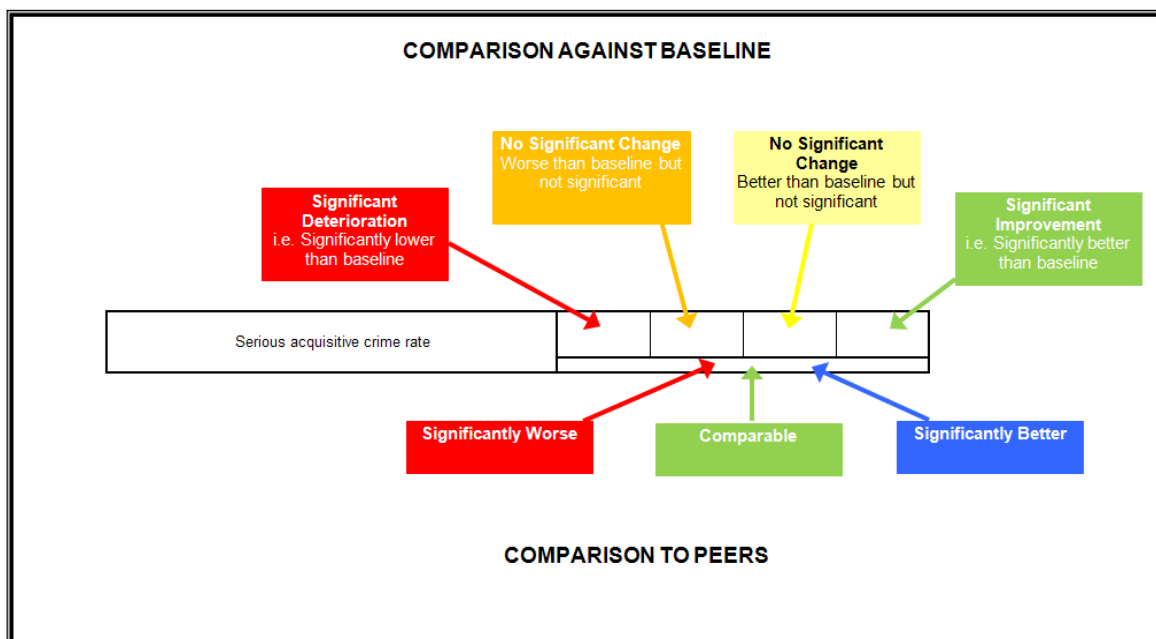
## **Police and Crime Commissioner Performance Update**

**December 2012**

	Page
<b>Notes</b>	<b>3</b>
<b>Local Policing Plan Dashboard</b>	<b>4</b>
<b>Local Policing Plan Indicators</b>	
Maintain Local Performance	5
Reduce Crime and Disorder	6-8
Keep People Safe	9-11
<b>Other Performance Indicators</b>	
Confidence and Satisfaction	12
Local Crime and Policing	13-16
<b>Sickness data</b>	<b>17</b>
<b>Call Handling</b>	<b>18-19</b>
<b>Arrests</b>	<b>20</b>
<b>Stop Searches</b>	<b>21</b>
<b>Information sheet</b>	<b>22</b>

## NOTES

### DASHBOARD EXPLANATION



### MOST SIMILAR FORCES

Avon and Somerset  
Devon and Cornwall  
Essex  
Gloucestershire  
Kent  
Warwickshire  
Wiltshire

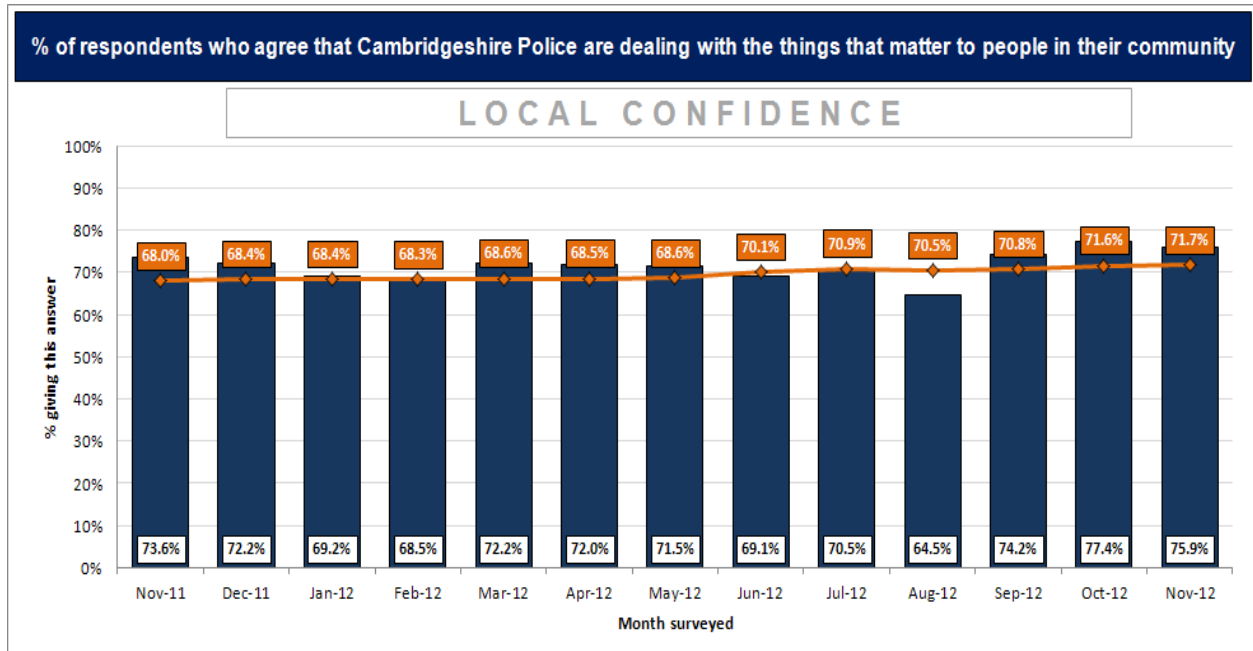
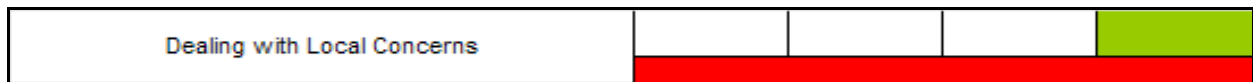
## LOCAL POLICING PLAN DASHBOARD

Maintain Local Performance				Latest month	Rolling 12 months	
					Baseline	Current
Dealing with Local Concerns	<div><div></div><div></div><div></div><div></div></div>			Comparable	68.6%	71.7%
Satisfaction with Service Delivery	<div><div></div><div></div><div></div><div></div></div>			Improved	84.8%	84.6%
Special Constabulary	<div><div></div><div></div><div></div><div></div></div>				256	254
Reduce Crime and Disorder				Latest month	Baseline	
					Current	
All Recorded Crime	<div><div></div><div></div><div></div><div></div></div>			Comparable	51,658	48,643
Victim-Based Crime	<div><div></div><div></div><div></div><div></div></div>			Comparable	44,982	42,501
Theft of Power & Communication Infrastructure	<div><div></div><div></div><div></div><div></div></div>			Improved	205	126
Asset Recovery	<div><div></div><div></div><div></div><div></div></div>			Improved	£563,752	£1,138,270
Perception of High ASB	<div><div></div><div></div><div></div><div></div></div>			Comparable	1.4%	1.4%
Perception of Drug Misuse	<div><div></div><div></div><div></div><div></div></div>			Comparable	17.1%	16.6%
Keeping People Safe				Latest month	Baseline	
					Current	
Ratio of DV Incidents to Prosecutions	<div><div></div><div></div><div></div><div></div></div>				8.9%	8.7%
Detection Rate for Domestic Abuse Crime	<div><div></div><div></div><div></div><div></div></div>			Deteriorated	41.8%	45.3%
IOM Reoffending	<div><div></div><div></div><div></div><div></div></div>				n/a	
Missing Person Involvement in Crime	FYTD - 28 out of 1439 Found Reports			n/a	n/a	n/a
Satisfaction with Service Delivery - Racist Incidents	<div><div></div><div></div><div></div><div></div></div>			Comparable	78.9%	78.4%
Reduce KSI Road Casualties	<div><div></div><div></div><div></div><div></div></div>			Deteriorated	400	381

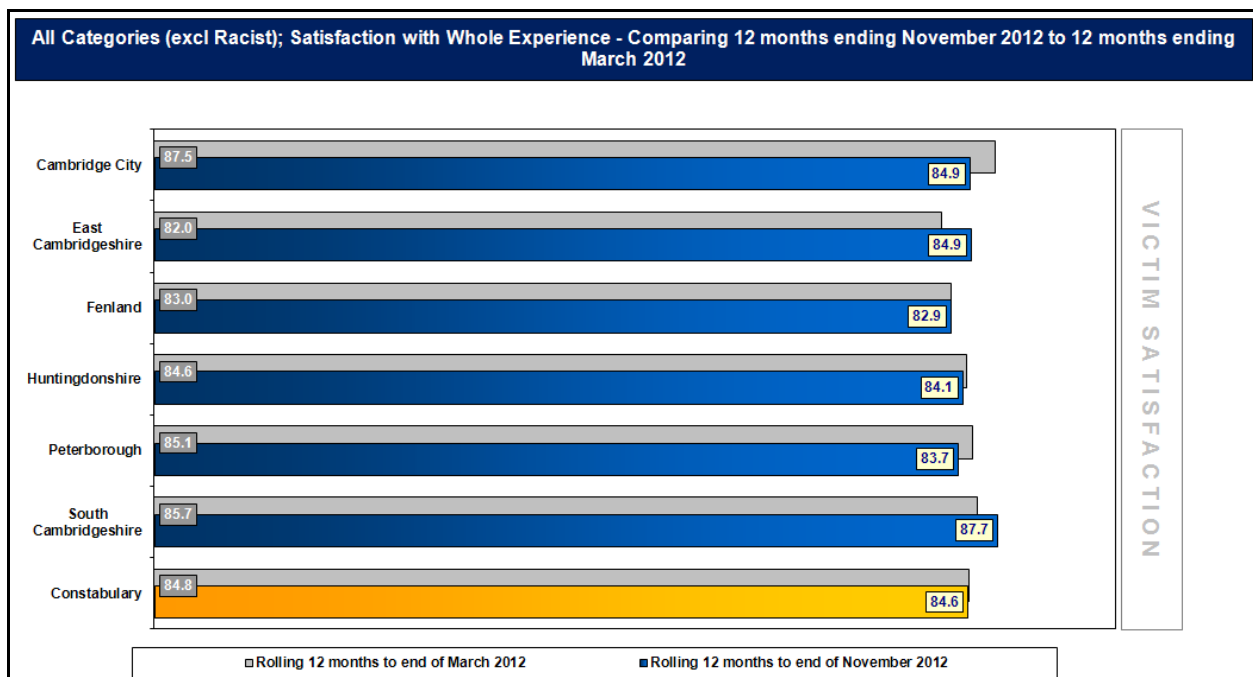
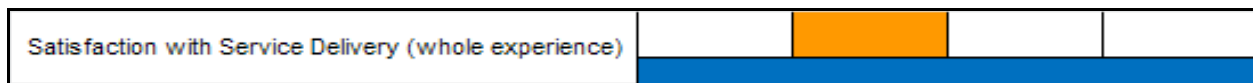
Data as at 10 December 2012

# NOT PROTECTIVELY MARKED

## MAINTAIN LOCAL PERFORMANCE



*Policing in Cambridgeshire Survey data to November 2012*

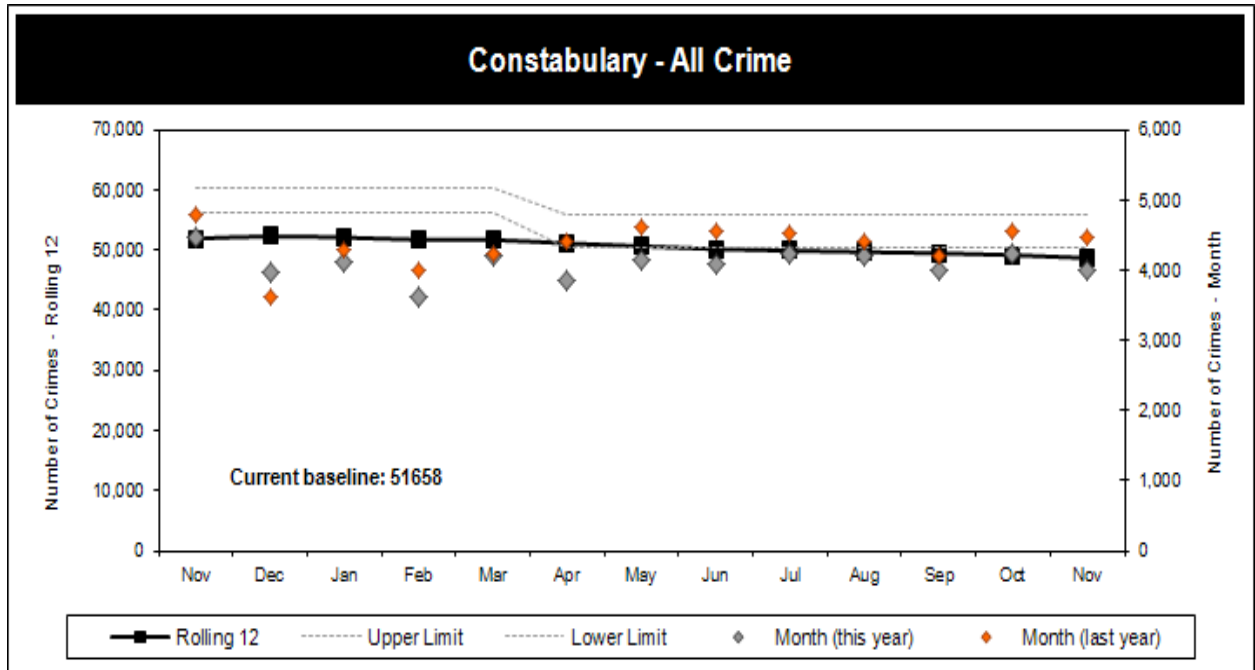


*Victim Satisfaction Survey data to November 2012*

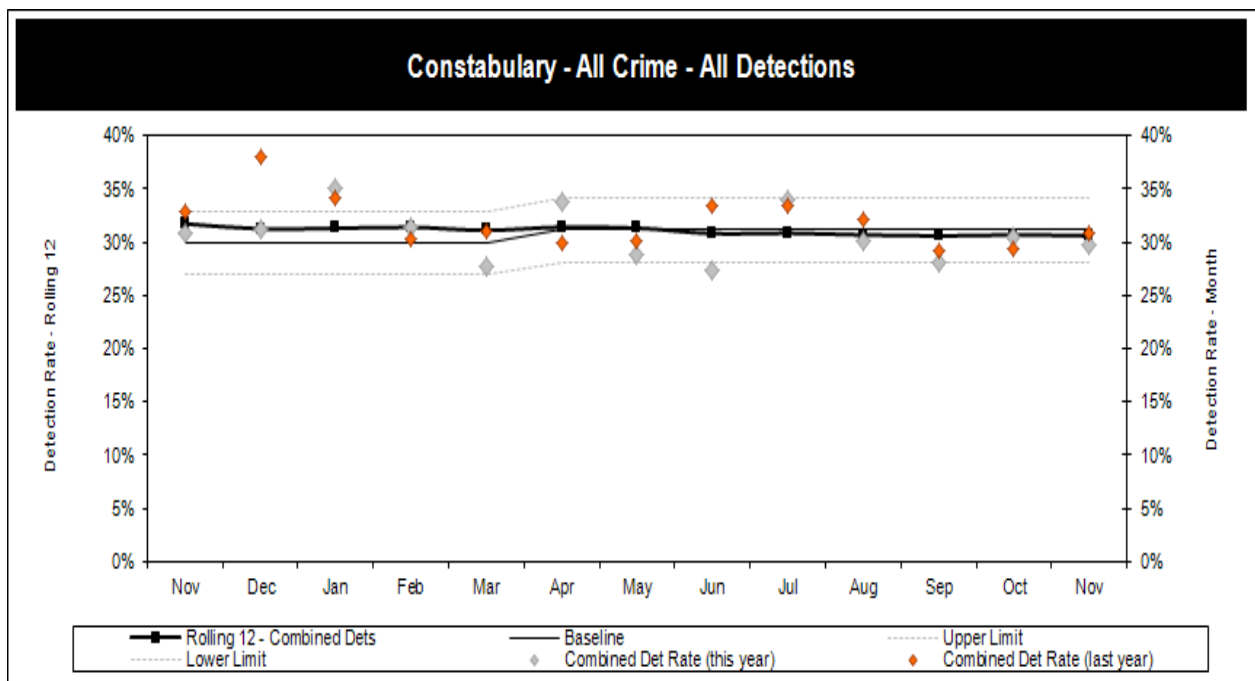
# NOT PROTECTIVELY MARKED

## REDUCE CRIME AND DISORDER

All Recorded Crime				

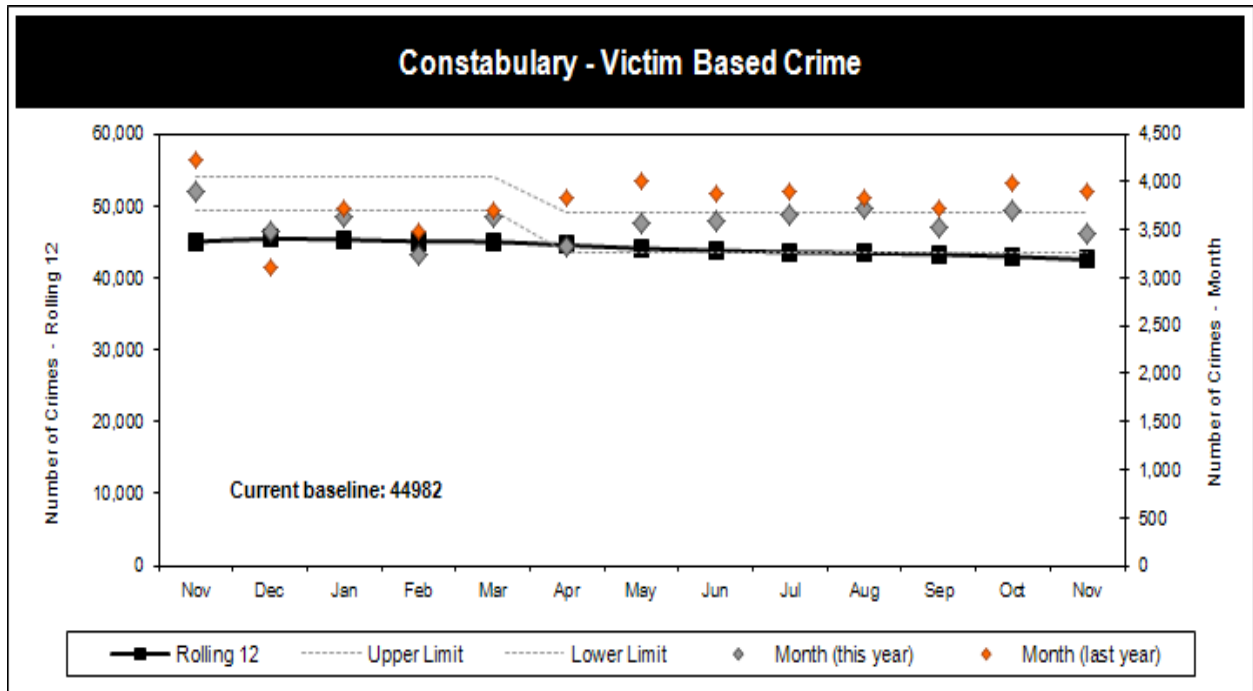


All Detections (including RJs)				



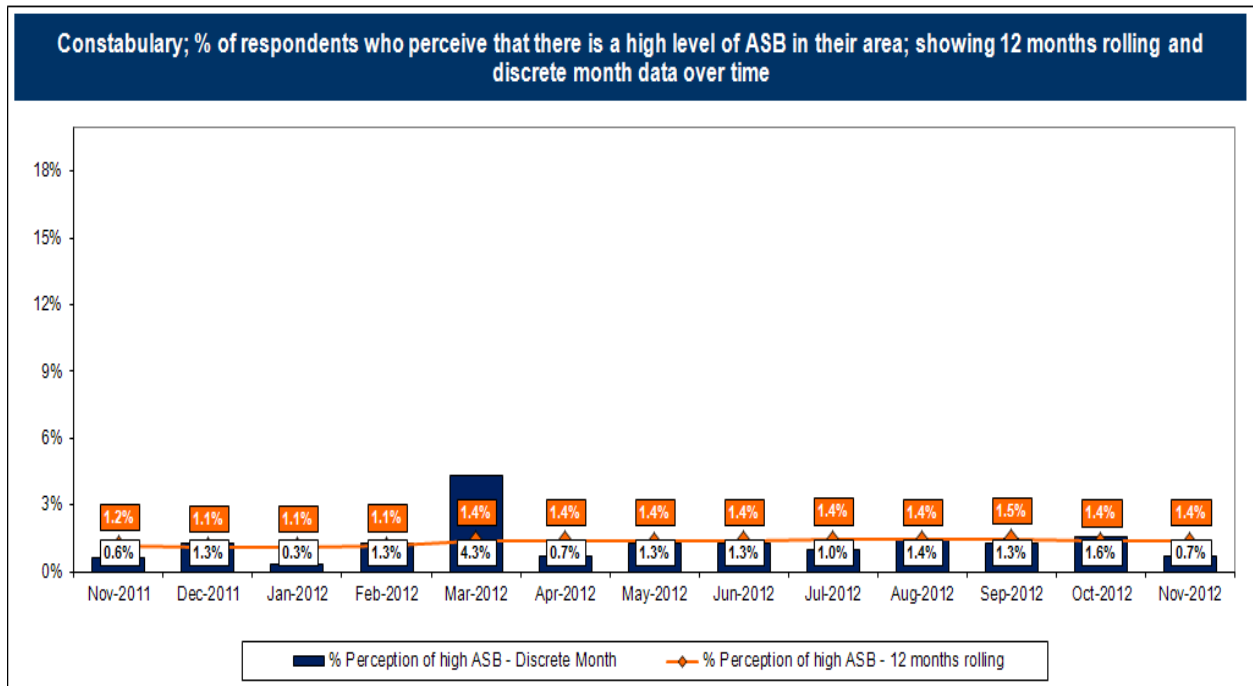
# NOT PROTECTIVELY MARKED

Victim-Based Crime				



Perception of High ASB				

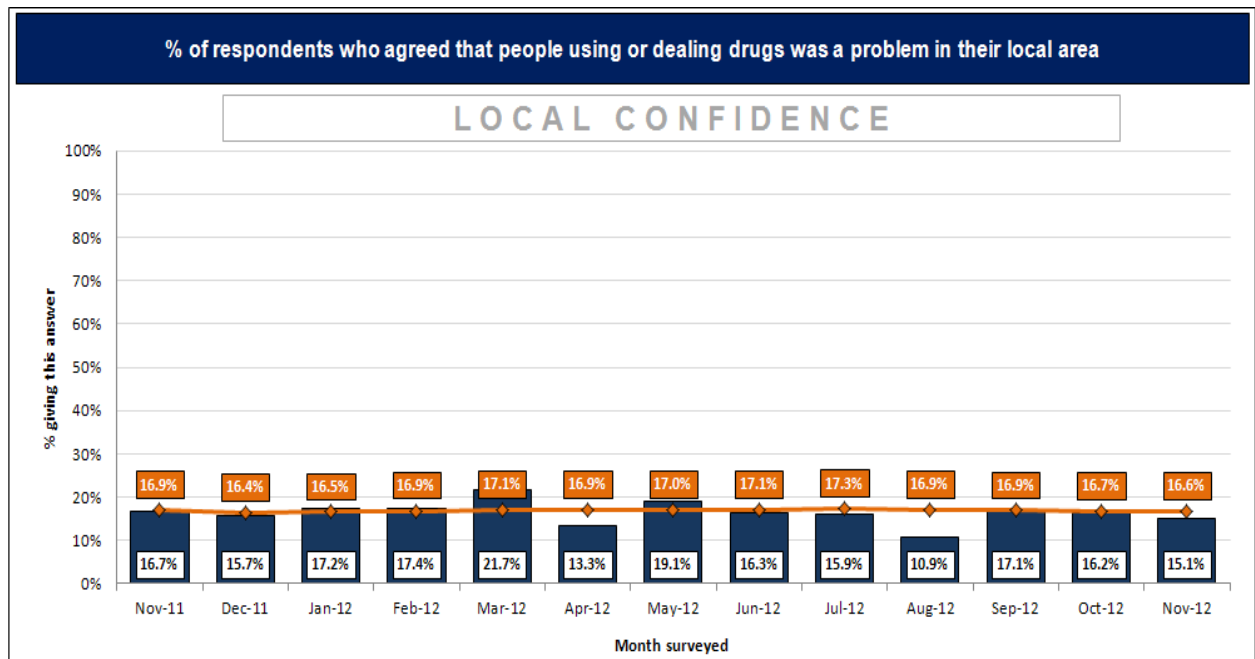
Not available



Policing in Cambridgeshire Survey data to November 2012

# NOT PROTECTIVELY MARKED

Perception of Drug Misuse				
			Not available	

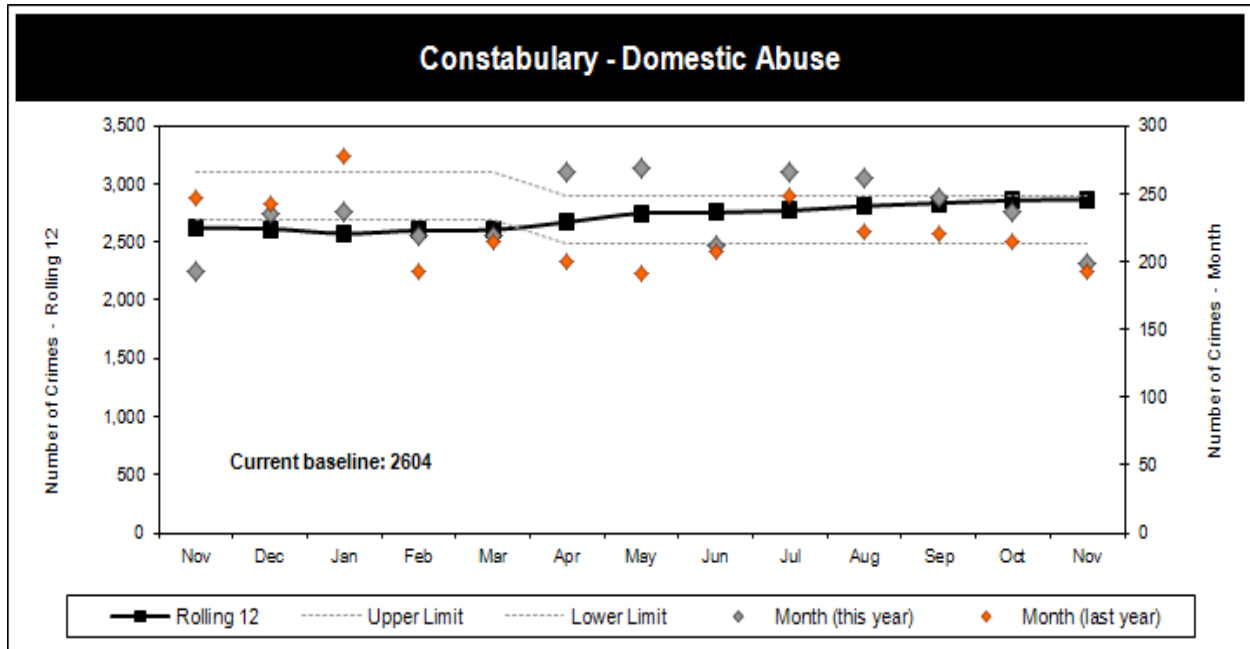


*Policing in Cambridgeshire Survey data to November 2012*



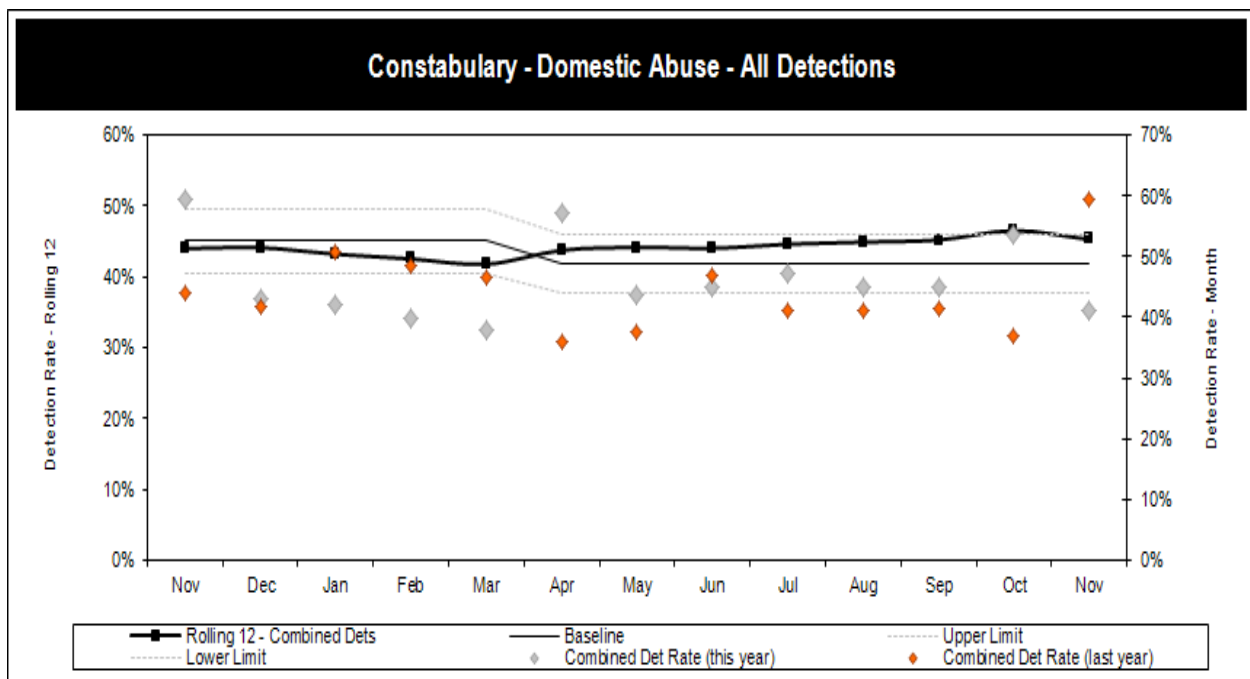
KEEP PEOPLE SAFE

Domestic Abuse Crime				
Not available				

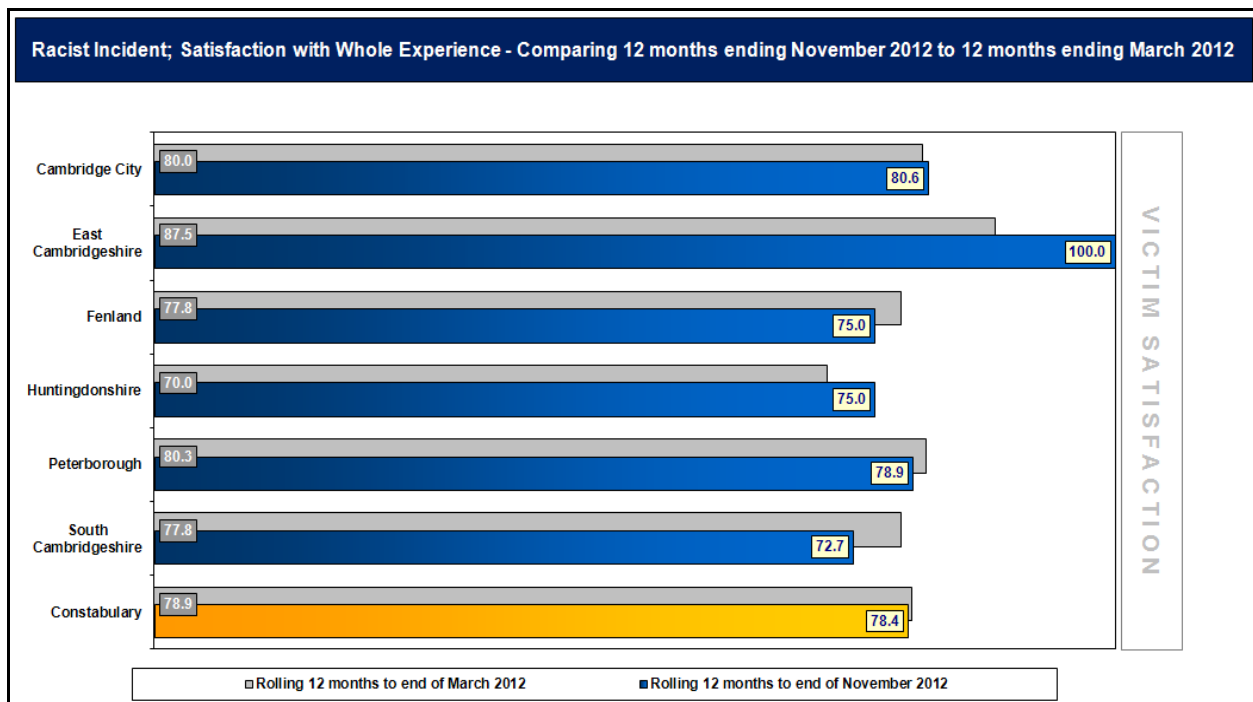
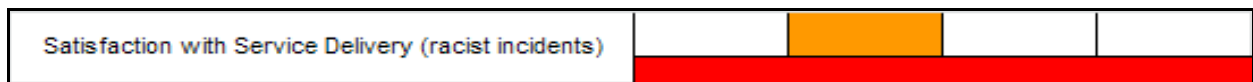
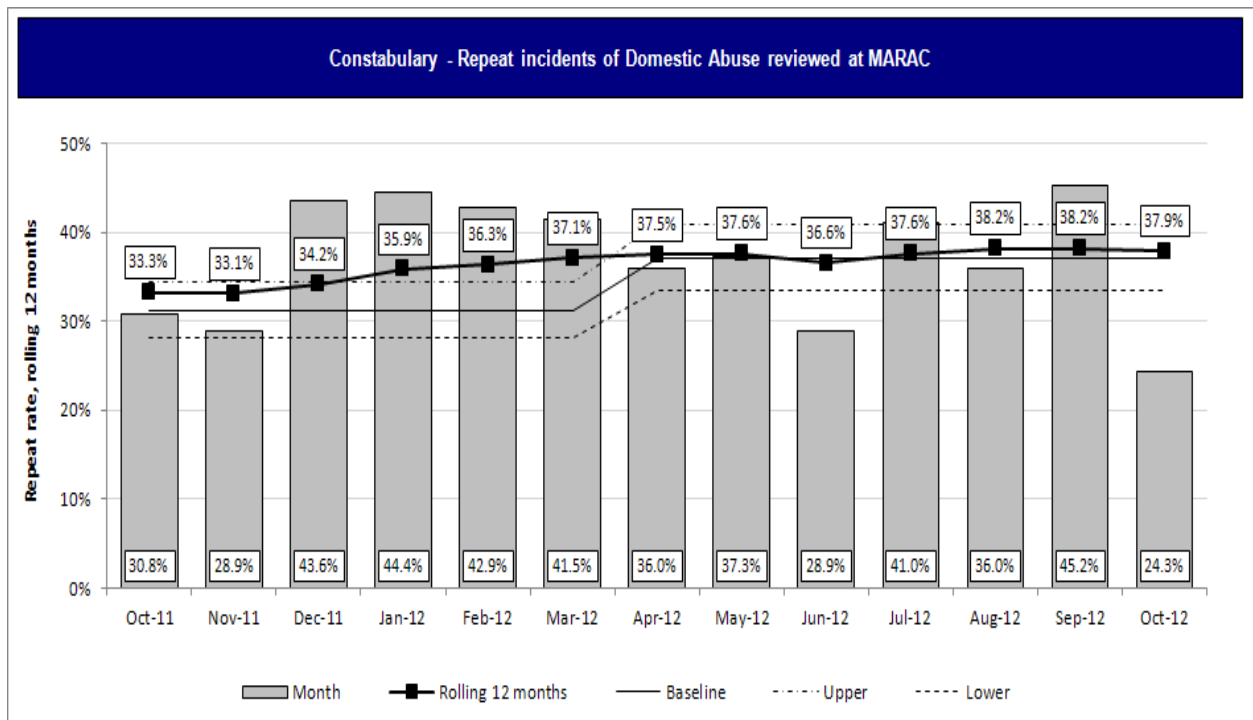


*As the Constabulary proactively encourages victims of Domestic Abuse to confidently seek our help, an increase in this offence type may not necessarily be a negative indicator.*

Domestic Abuse Detections				
Not available				



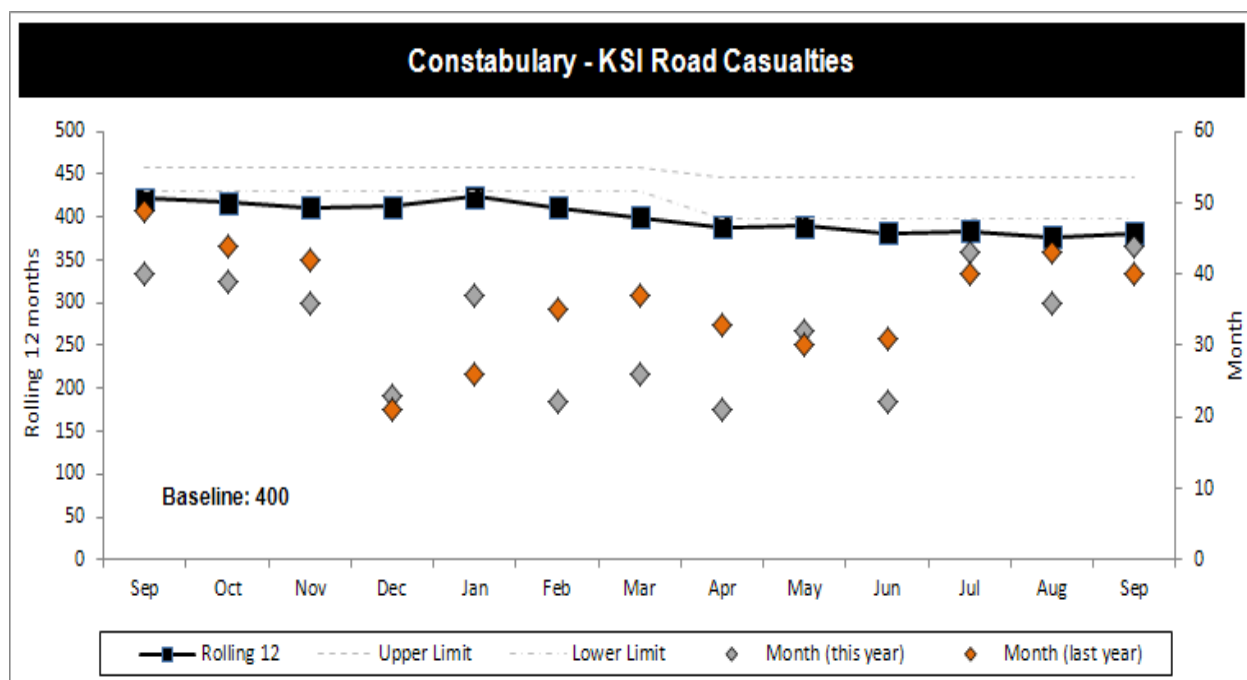
## NOT PROTECTIVELY MARKED



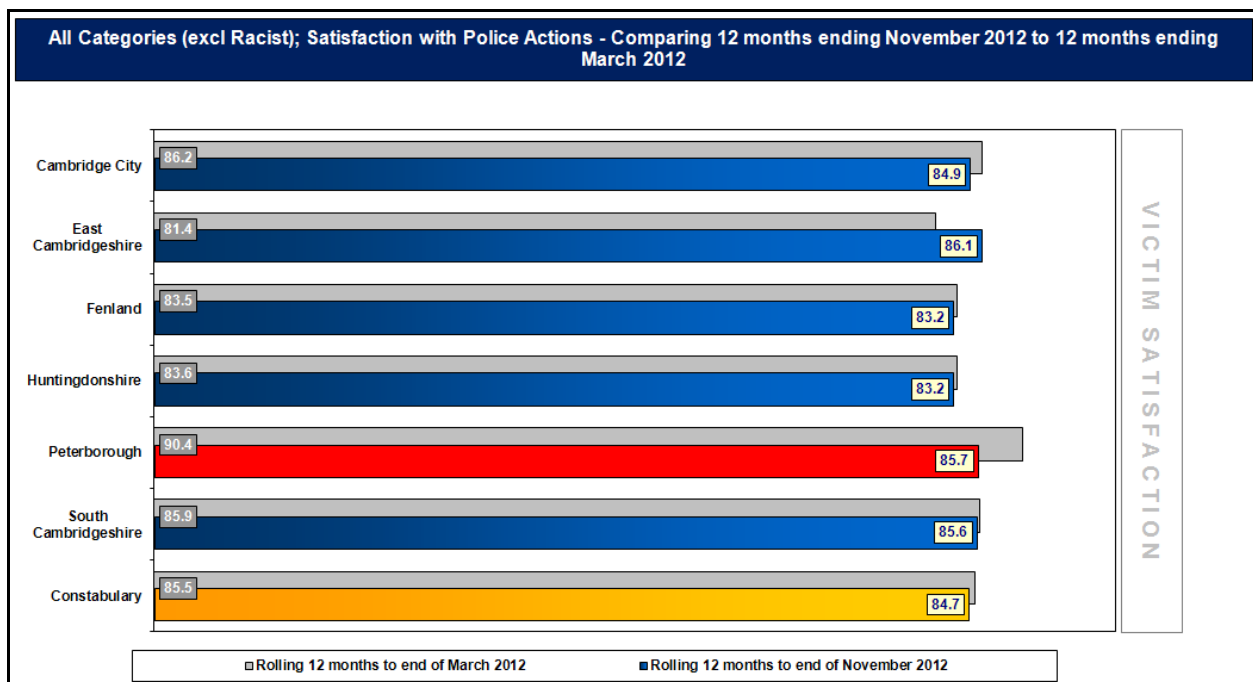
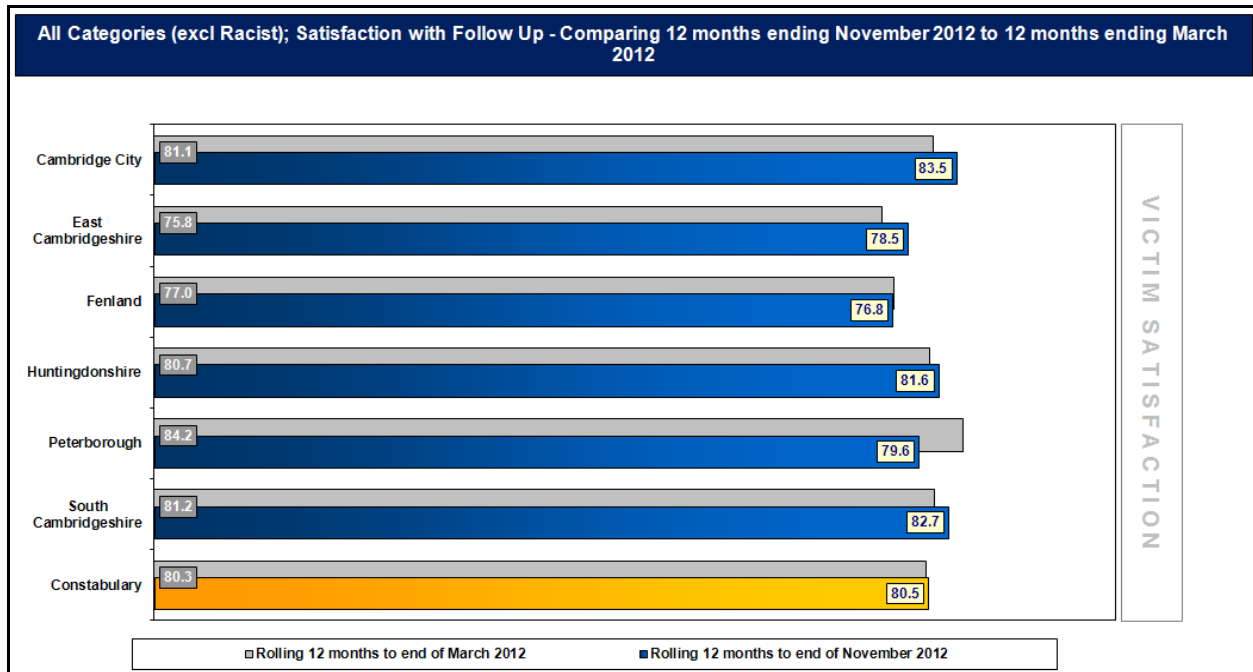
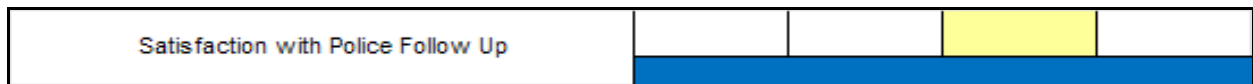
Victim Satisfaction Survey data to November 2012

# NOT PROTECTIVELY MARKED

KSI Road Casualties				



# CONFIDENCE AND SATISFACTION

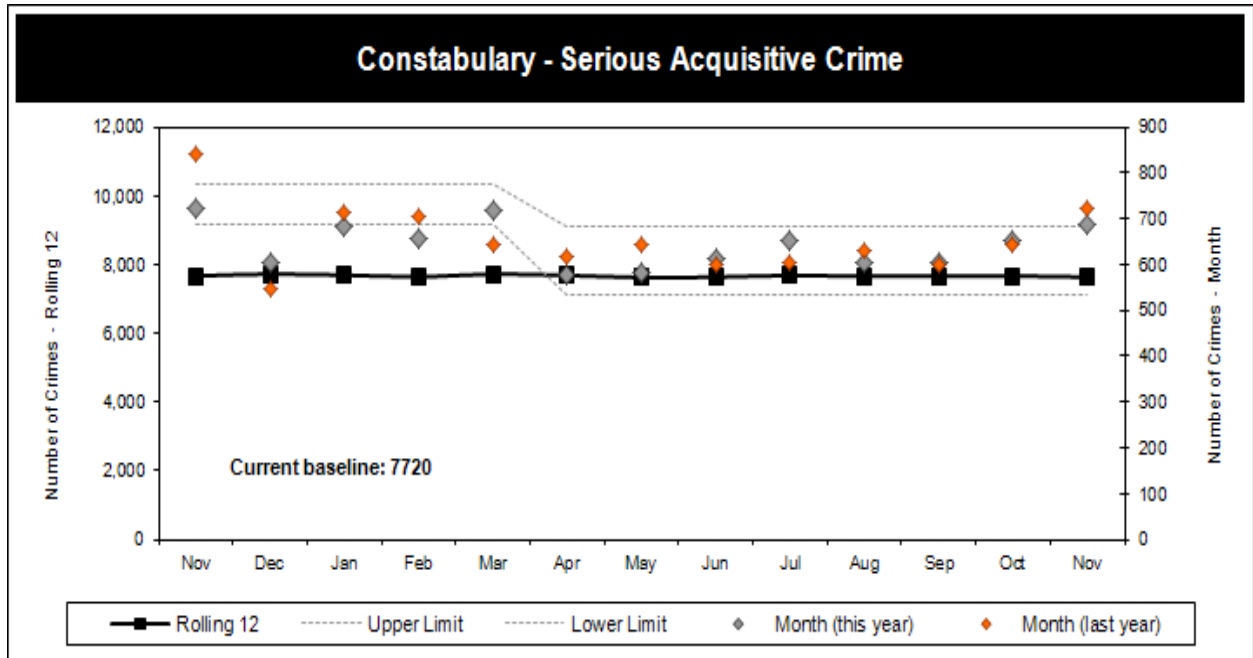


Victim Satisfaction Survey data to November 2012

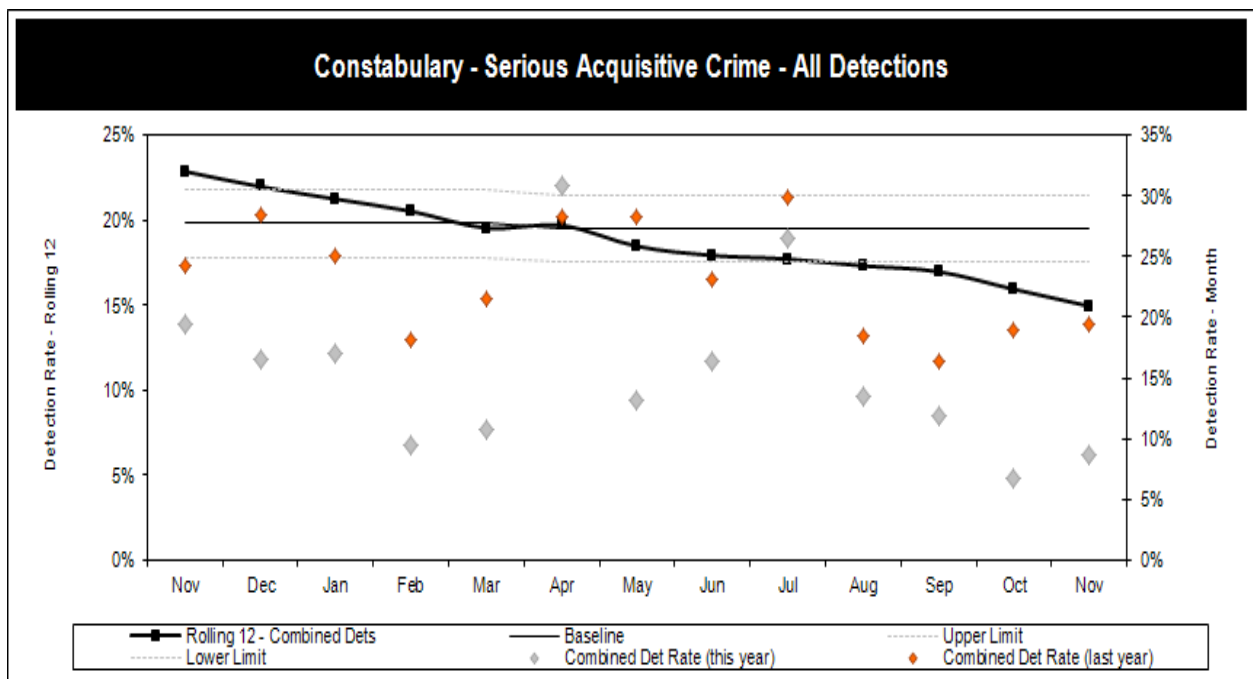
# NOT PROTECTIVELY MARKED

## LOCAL CRIME AND POLICING

Serious Acquisitive Crime				

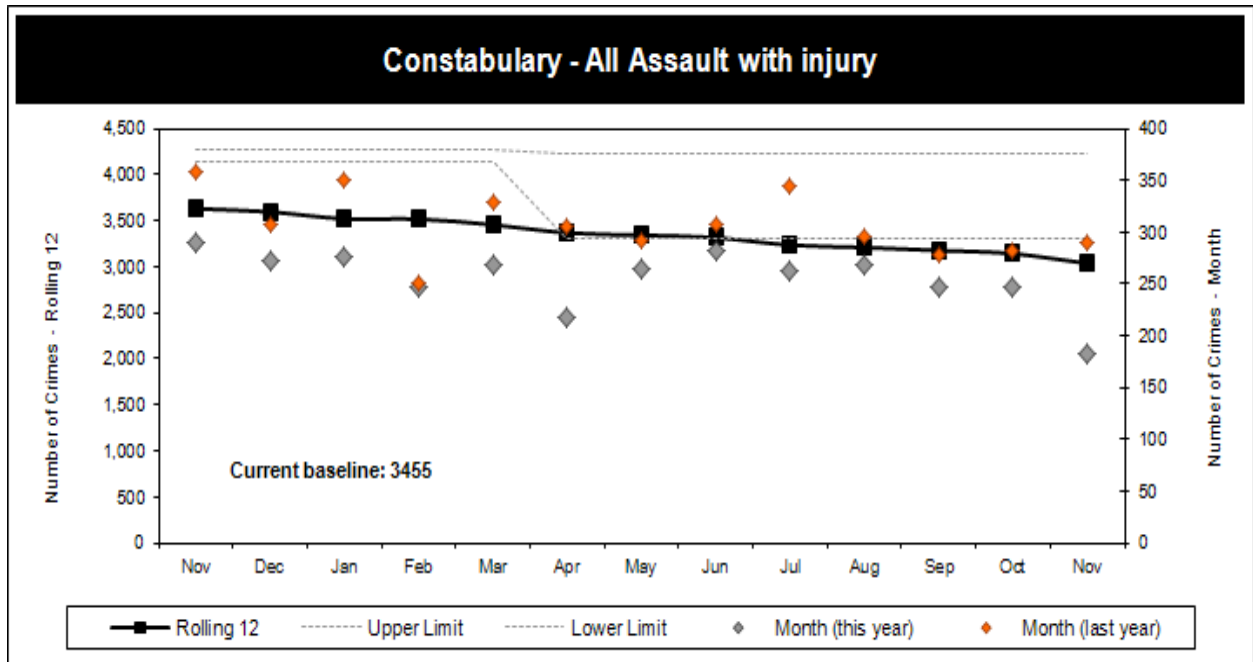


Serious Acquisitive Crime Detections				

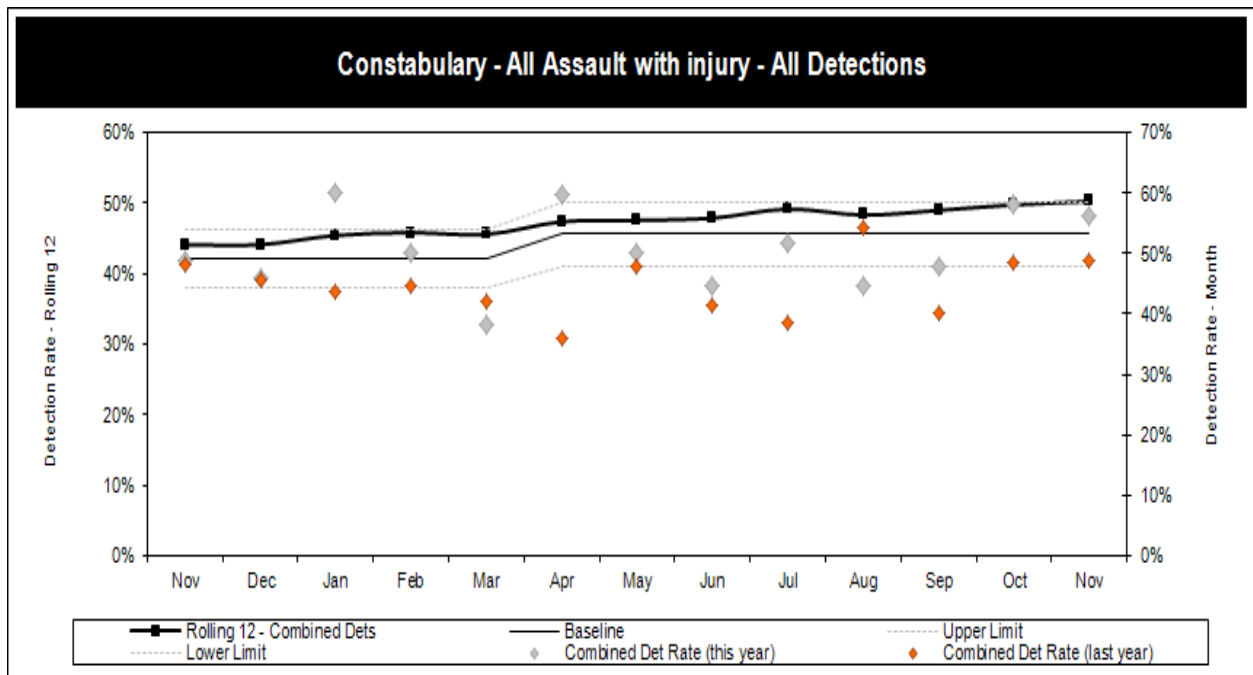


# NOT PROTECTIVELY MARKED

All Assault with Injury				
				Not available

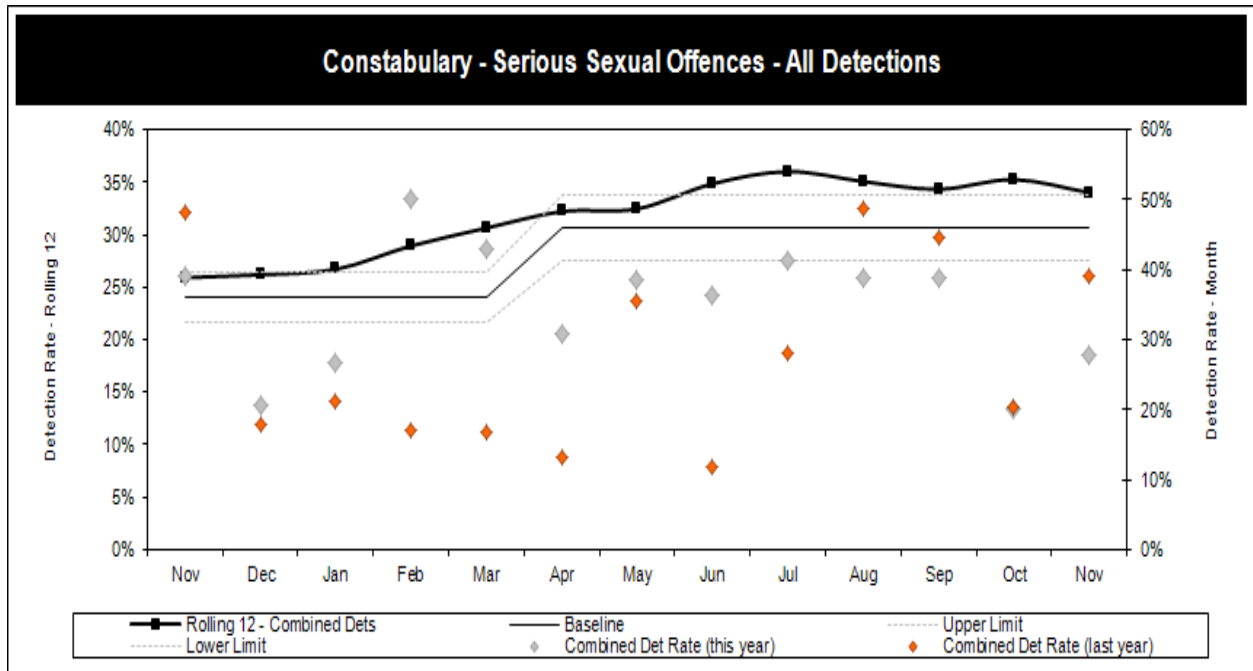


All Assault with Injury Detections				
				Not available

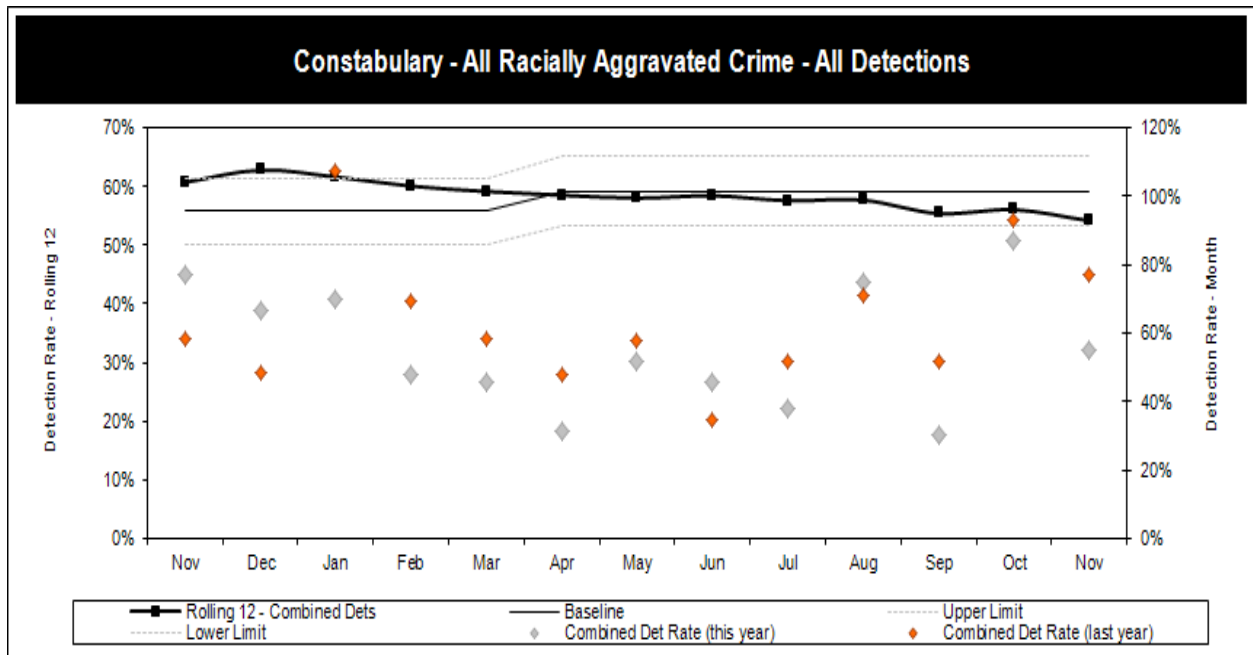


# NOT PROTECTIVELY MARKED

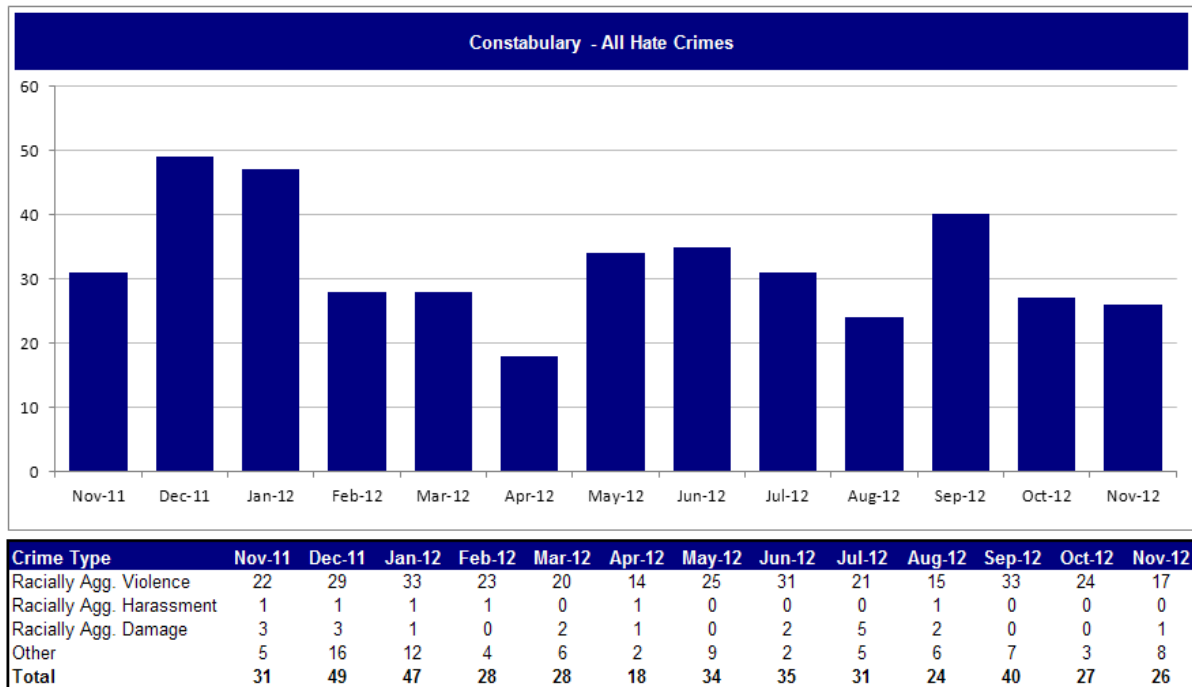
Serious Sexual Offences Detections				



All Racially Aggravated Crime Detections				



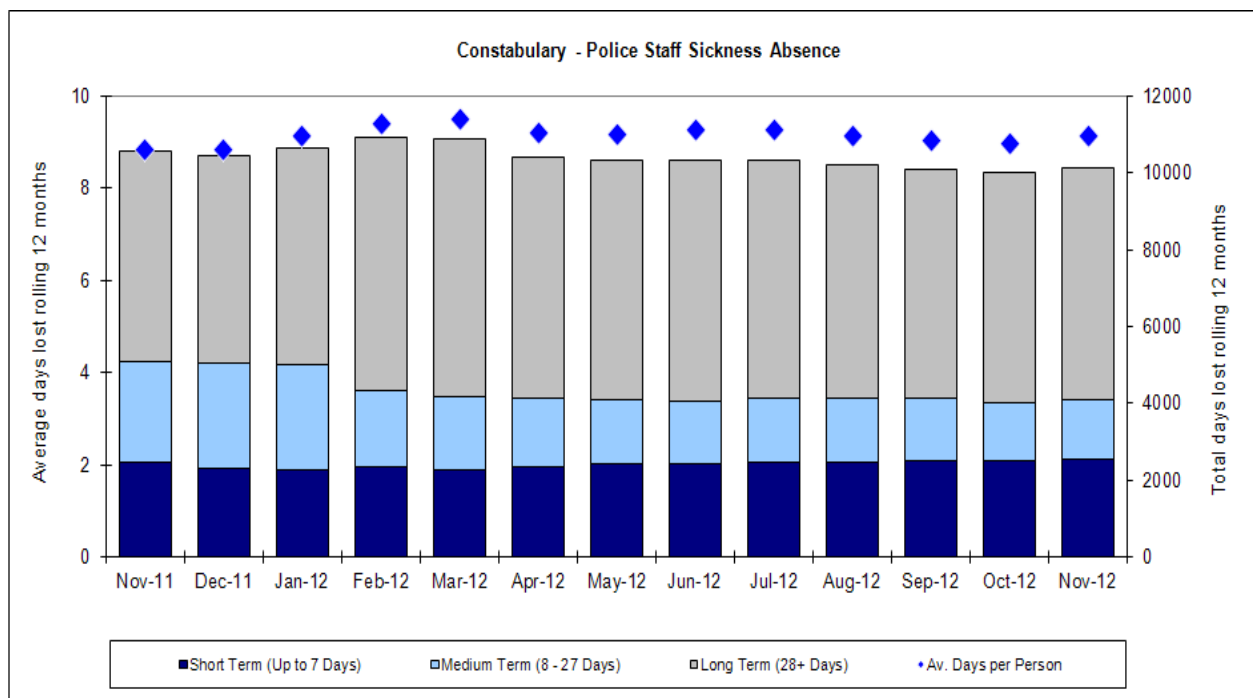
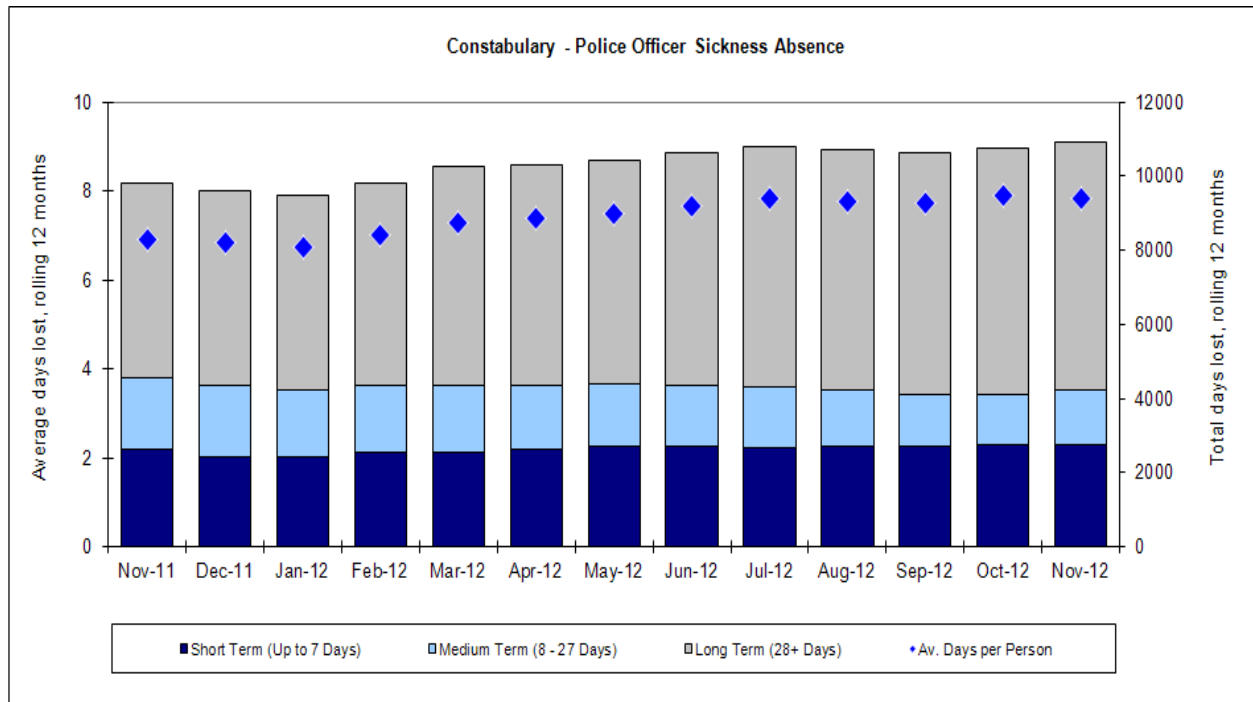
## NOT PROTECTIVELY MARKED



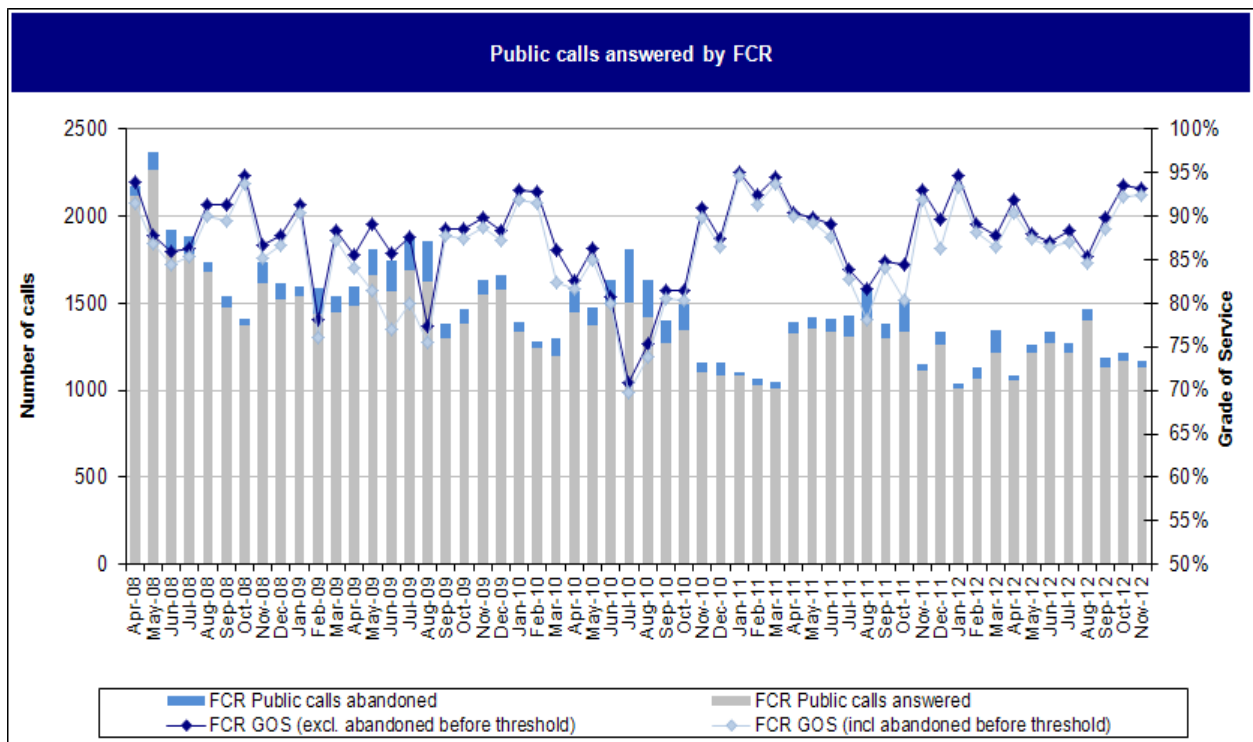
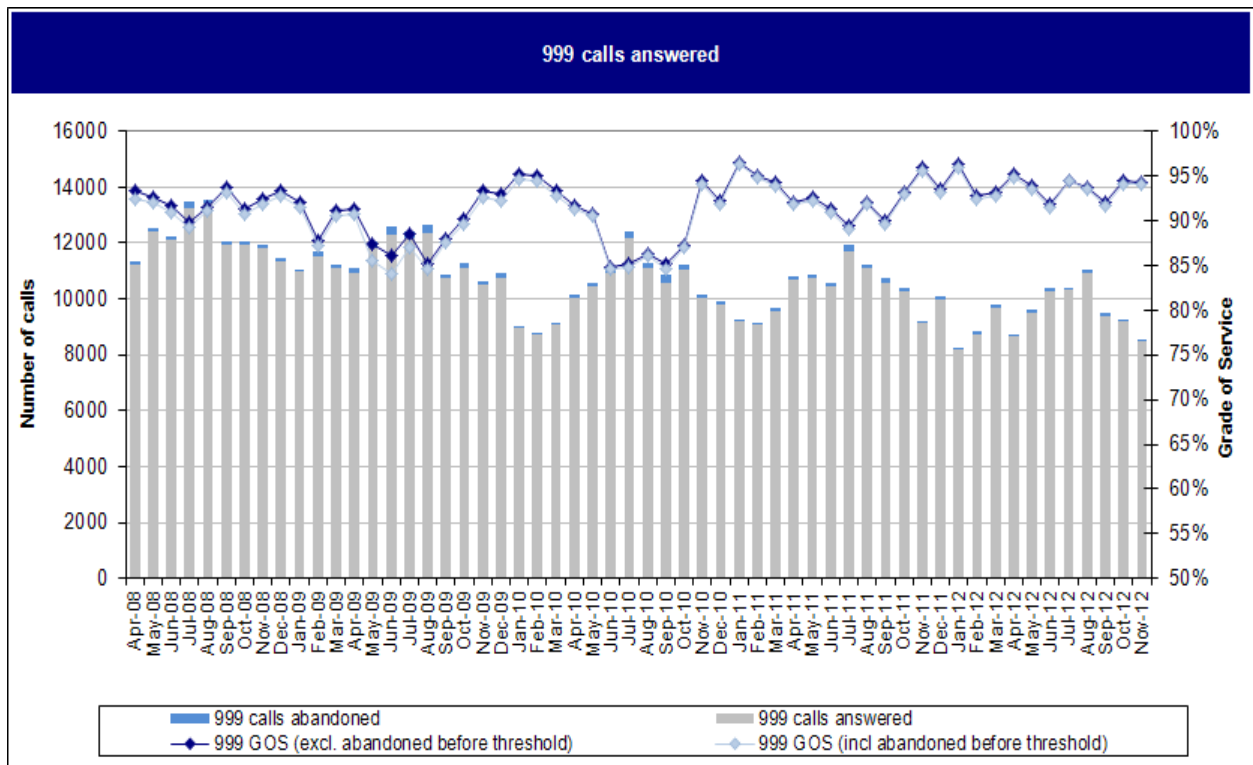
*Note: All Crimes raised with a Hate marker*

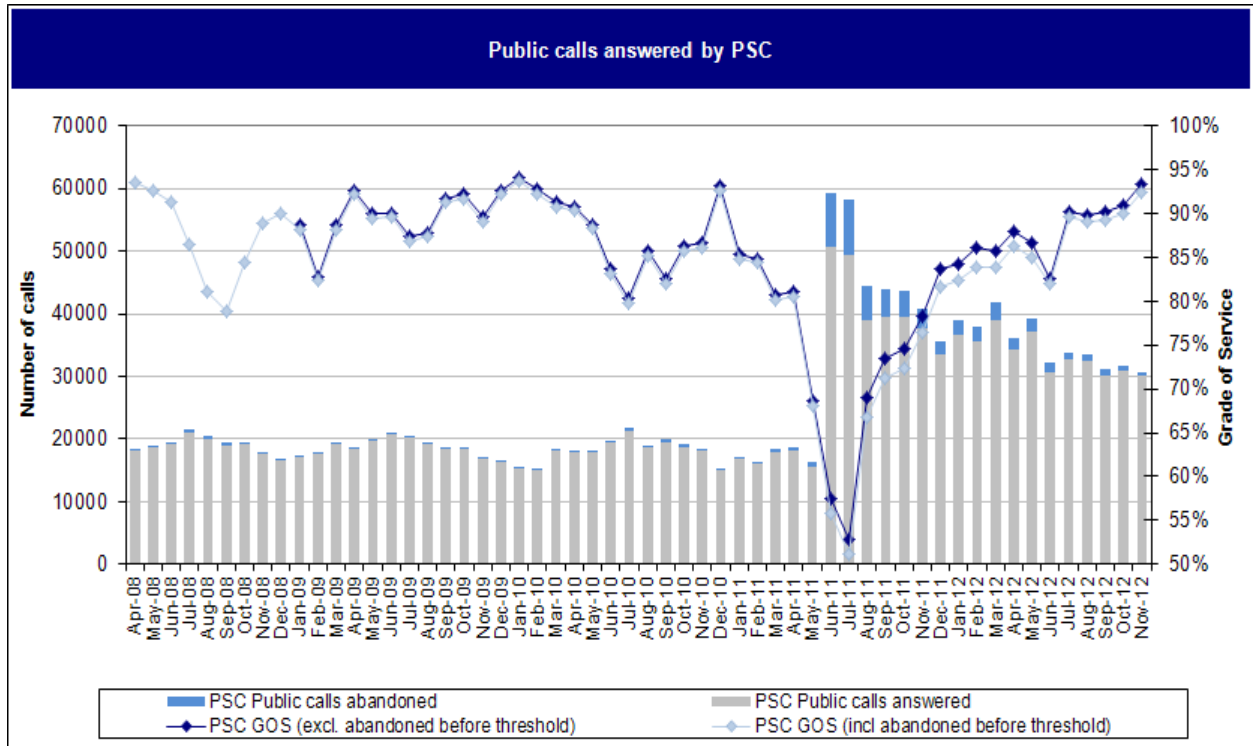


## SICKNESS DATA

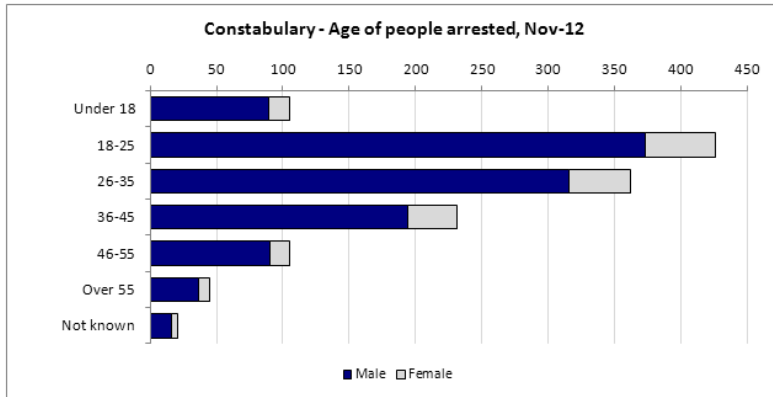


# CALL HANDLING

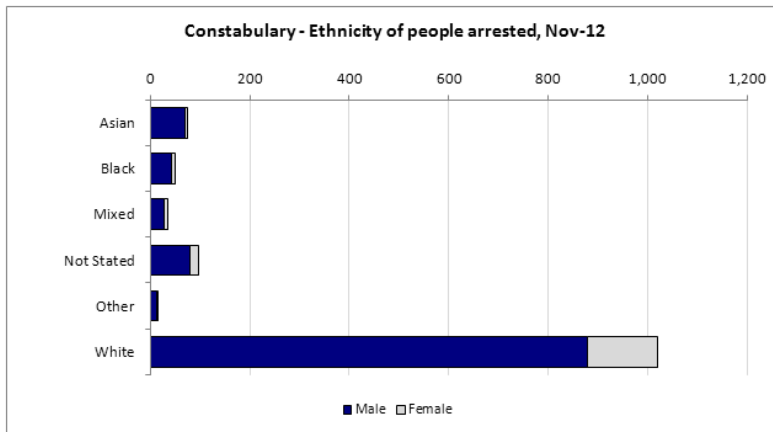




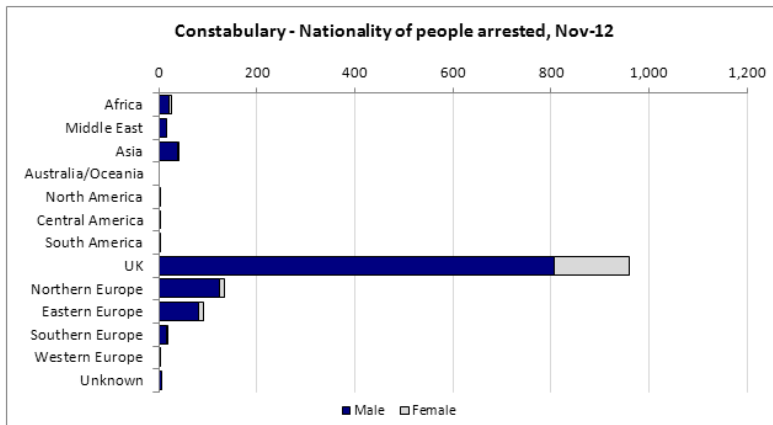
## ARRESTS



SUMMARY - AGE		
	Nov-12	Rolling 12 *
Under 18	8.1%	8.6%
18-25	32.9%	31.9%
26-35	28.0%	27.9%
36-45	17.8%	18.4%
46-55	8.1%	8.5%
Over 55	3.5%	3.2%
Not known	1.6%	1.6%
<b>TOTAL ARRESTS</b>	<b>1,295</b>	<b>17,240</b>
<b>Juveniles</b>	<b>5.3%</b>	<b>5.7%</b>



SUMMARY - ETHNICITY		
	Nov-12	Rolling 12 *
Asian	5.8%	5.2%
Black	3.9%	4.1%
Mixed	2.8%	2.4%
Not Stated	7.5%	6.8%
Other	1.2%	0.8%
White	78.8%	80.7%
<b>TOTAL ARRESTS</b>	<b>1,295</b>	<b>17,240</b>

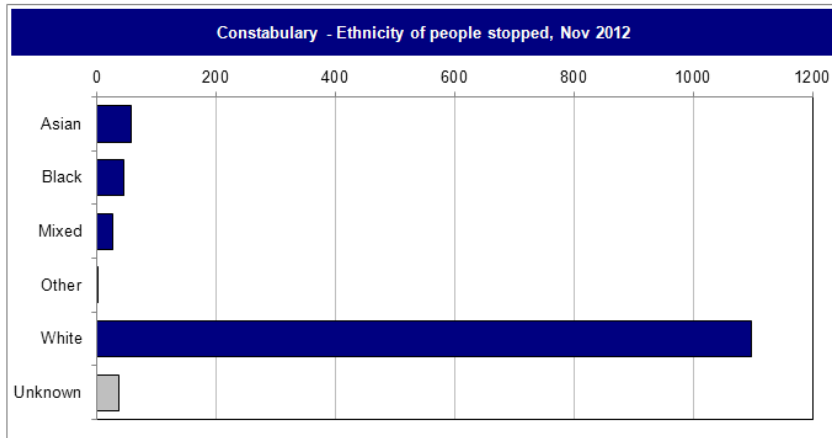


SUMMARY - NATIONALITY		
	Nov-12	Rolling 12 *
Africa	1.9%	1.6%
Middle East	1.2%	0.9%
Asia	3.1%	2.4%
Australia/Oceania	0.0%	0.0%
North America	0.1%	0.3%
Central America	0.2%	0.3%
South America	0.1%	0.1%
<b>Total America</b>	<b>0.4%</b>	<b>0.7%</b>
UK	74.1%	75.6%
Northern Europe	10.3%	9.9%
Eastern Europe	7.0%	6.7%
Southern Europe	1.3%	1.6%
Western Europe	0.2%	0.3%
Europe (excl UK)	18.9%	18.5%
Europe (incl UK)	93.1%	94.1%
Unknown	0.4%	0.3%

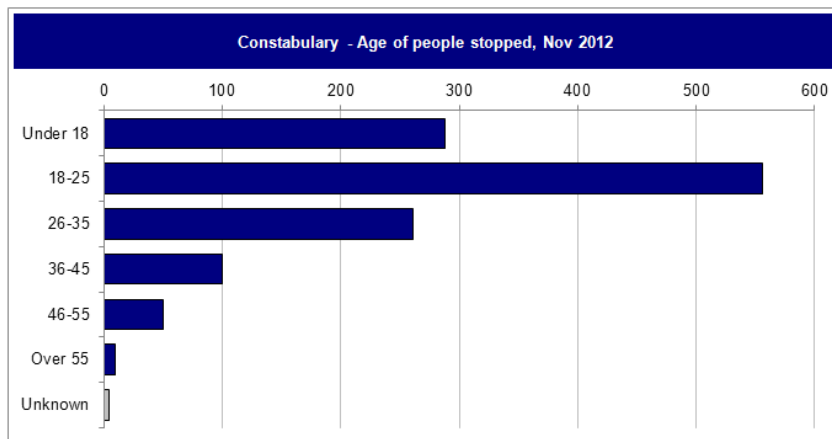
\* Current rolling 12 months to November 2012

Data from NSPIS Custody

## STOP SEARCHES



SUMMARY		
	Nov-12	Rolling 12
Asian	4.6%	4.7%
Black	3.6%	3.2%
Mixed	2.2%	2.3%
Other	0.2%	0.4%
White	86.4%	85.8%
Unknown	2.9%	3.7%



SUMMARY		
	Nov-12	Rolling 12
Under 18	22.7%	22.5%
18-25	43.8%	44.2%
26-35	20.6%	18.9%
36-45	7.9%	9.2%
46-55	3.9%	3.6%
Over 55	0.8%	1.0%
Unknown	0.3%	0.5%

\* Current rolling 12 months to November 2012

Data from Stop Search database

## INFORMATION SHEET

## LOCAL POLICING PLAN INDICATORS

	Indicator Name	Data used	Peer comparison data (iQuanta)
Maintain Local Performance	Dealing with Local Concerns	Policing in Cambridgeshire survey data (conducted via telephone interviews). Data to November 2012	Data to June 2012
	Satisfaction with service delivery (whole experience)	Victim satisfaction surveys (conducted via telephone interviews). Data to November 2012	Data to September 2012
Reduce Crime and Disorder	All Recorded Crime	Police recorded crime. Data to November 2012	Data to October 2012
	All Detections	Police recorded crime. Data to November 2012	Data to October 2012
	All Victim-Based Crime	Police recorded crime. Data to November 2012	Data to October 2012
	Perception of high anti-social behaviour	Policing in Cambridgeshire survey data (conducted via telephone interviews). Data to November 2012	n/a
	Perception of drug misuse	Policing in Cambridgeshire survey data (conducted via telephone interviews). Data to November 2012	n/a
Keeping People Safe	Domestic Abuse crime rate	Police recorded crime. Data to November 2012	n/a
	Domestic Abuse detection rate	Police recorded crime. Data to November 2012	n/a
	Repeat incidents of domestic violence	MARAC data to October 2012	n/a
	Satisfaction with service delivery (racist incidents)	Victim satisfaction surveys (conducted via telephone interviews). Data to November 2012	Data to September 2012
	KSI Road Casualties	Cambridgeshire County Council data to September 2012	Data to March 2012

## OTHER PERFORMANCE INDICATORS

	Indicator Name	Data used	Peer comparison data (iQuanta)
Confidence and Satisfaction	Satisfaction with Police Follow Up	Victim satisfaction surveys (conducted via telephone interviews). Data to November 2012	Data to September 2012
	Satisfaction with Police Actions	Victim satisfaction surveys (conducted via telephone interviews). Data to November 2012	Data to September 2012
Local Crime and Policing	Serious Acquisitive Crime	Police recorded crime. Data to November 2012	Data to October 2012
	Serious Acquisitive Crime Detections	Police recorded crime. Data to November 2012	Data to October 2012
	All Assaults with Injury	Police recorded crime. Data to November 2012	Data to October 2012
	All Assaults with Injury Detections	Police recorded crime. Data to November 2012	Data to October 2012
	Serious Sexual Offences Detections	Police recorded crime. Data to November 2012	Data to October 2012
	All Racially Aggravated Crime Detections	Police recorded crime. Data to November 2012	Data to October 2012
	Hate Crimes	Police recorded crime. Data to November 2012	n/a
Sickness	Police officer sickness absence rate	Sickness data from ORIGIN. Data to November 2012	n/a
	Police staff sickness absence rate	Sickness data from ORIGIN. Data to November 2012	n/a
Call Handling	999 calls answered	Call handling data. Data to November 2012	n/a
	Public calls answered by FCR	Call handling data. Data to November 2012	n/a
	Public calls answered by PSC	Call handling data. Data to November 2012	n/a
Arrests	Age, ethnicity and nationality of detainees	Data from NSPIS Custody. Data to November 2012	n/a
Stop Search	Age and ethnicity of people stop searched	Data from Stop Search database. Data to November 2012	n/a