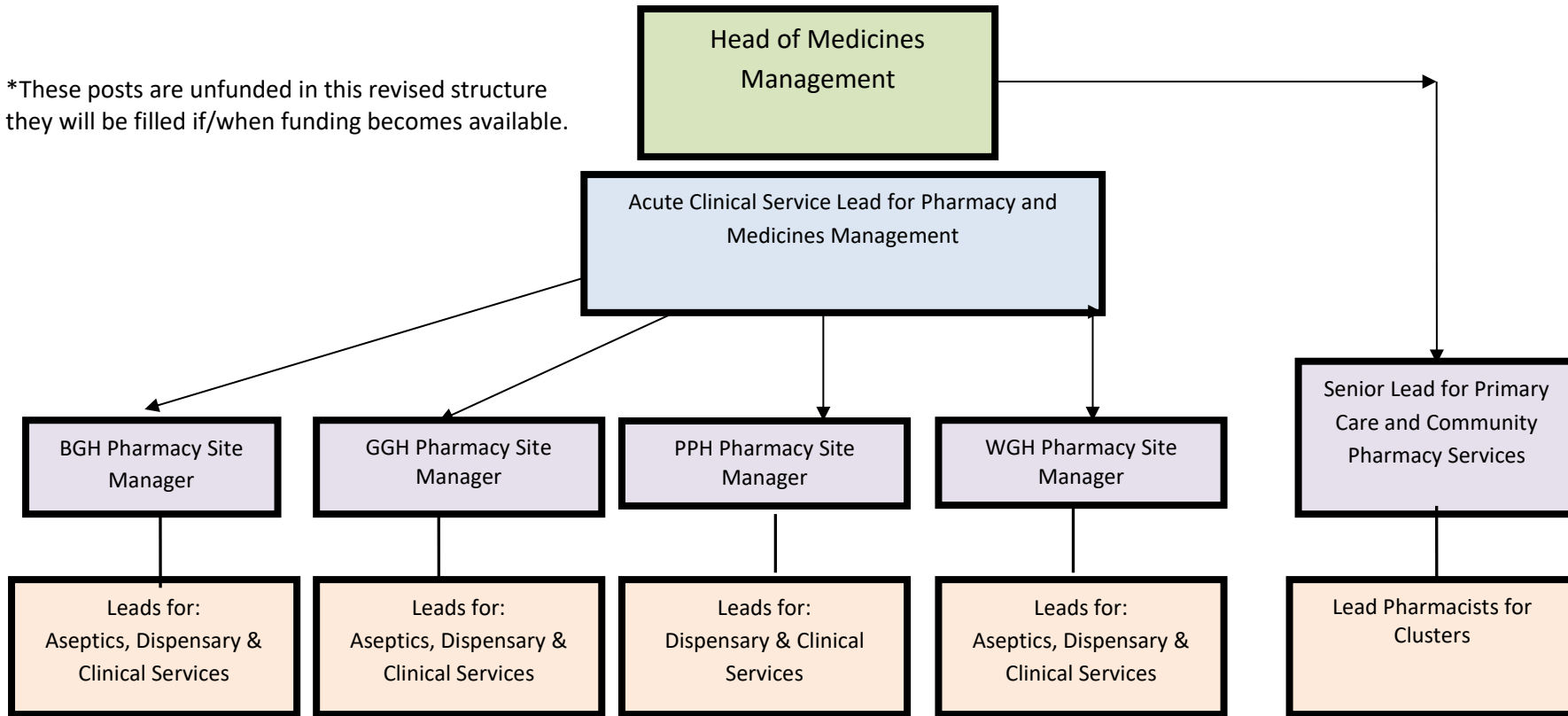


\*These posts are unfunded in this revised structure they will be filled if/when funding becomes available.



**Health Board Wide Posts** directly reporting to Head of MM/Primary Care Lead:

- Clinical Development Pharmacist
- Medicines Management Nurse
- Prescribing Support Dietician
- Lead Pharmacist for Assurance, Safety and Improvement (MSO)- TBC

**Health Board Wide Posts** reporting to lead for Acute Pharmacy Services/Pharmacy Site Managers (TBC):

- Medicines Information Services
- Mental Health
- Women’s & Children (including paediatrics & neonates)
- Palliative Care
- Quality Control and Assurance
- Education & Training (0.5WTE)\* Pharmacist and Pharmacy Technician (0.5WTE)\*- TBC