

Warwickshire County Council

People Group



Wendy Fabbro
Strategic Director



Nigel Minns
Learning & Achievement

**Planning, Sufficiency
& Access**

Dr June Maw (Interim)

**Special Educational
Needs & Inclusion**

Vacancy

**Learning &
Performance**

Vacancy



Hugh Disley
Early Help &
Targeted Support

Transition Support

Peter Hatcher

**School Early
Intervention Service**

Pat Tate

**Community Support
for Vulnerable
Adults**

Vacancy

Family Support

Sally Lightfoot

**Head of Children's
Services (Health)**

Jane Williams



**Sue Ross
(Interim)**
Safeguarding

**North Service
Manager Social
Care**

Calvin Smith

**East Service
Manager Social
Care**

Calvin Smith

**South Service
Manager Social
Care**

Brenda Vincent

**Countywide
Service Manager
Child Protection**

Jenny Butlin-Moran



**Marie Seaton
(Interim)**
Professional Practice
& Governance

**Service Development
and Assurance**

Marcus Herron

**Service & Practice
Development**

Mike J Wood



Chris Lewington
Strategic Commissioning

**Children's
Commissioning**

Kate Harker

**Market Management &
Quality**

Rob Wilkes

**Commissioning &
Business Intelligence**

Spencer Payne

**All Age Disabilities
Commissioning**

Becky Hale

**Integrated Older People
Commissioning**

Zoe Bogg



Jenny Wood
Social Care &
Support

**Older People North
& Health**

Di King

**Older People South,
Quality in Care &
Adult Safeguarding**

Swapna Kalsi

**Occupational Therapy
Lead**

Denise Cross

**Service
Development**

Vacancy

Disabilities

Doris Sheridan (Interim)

Mental Health

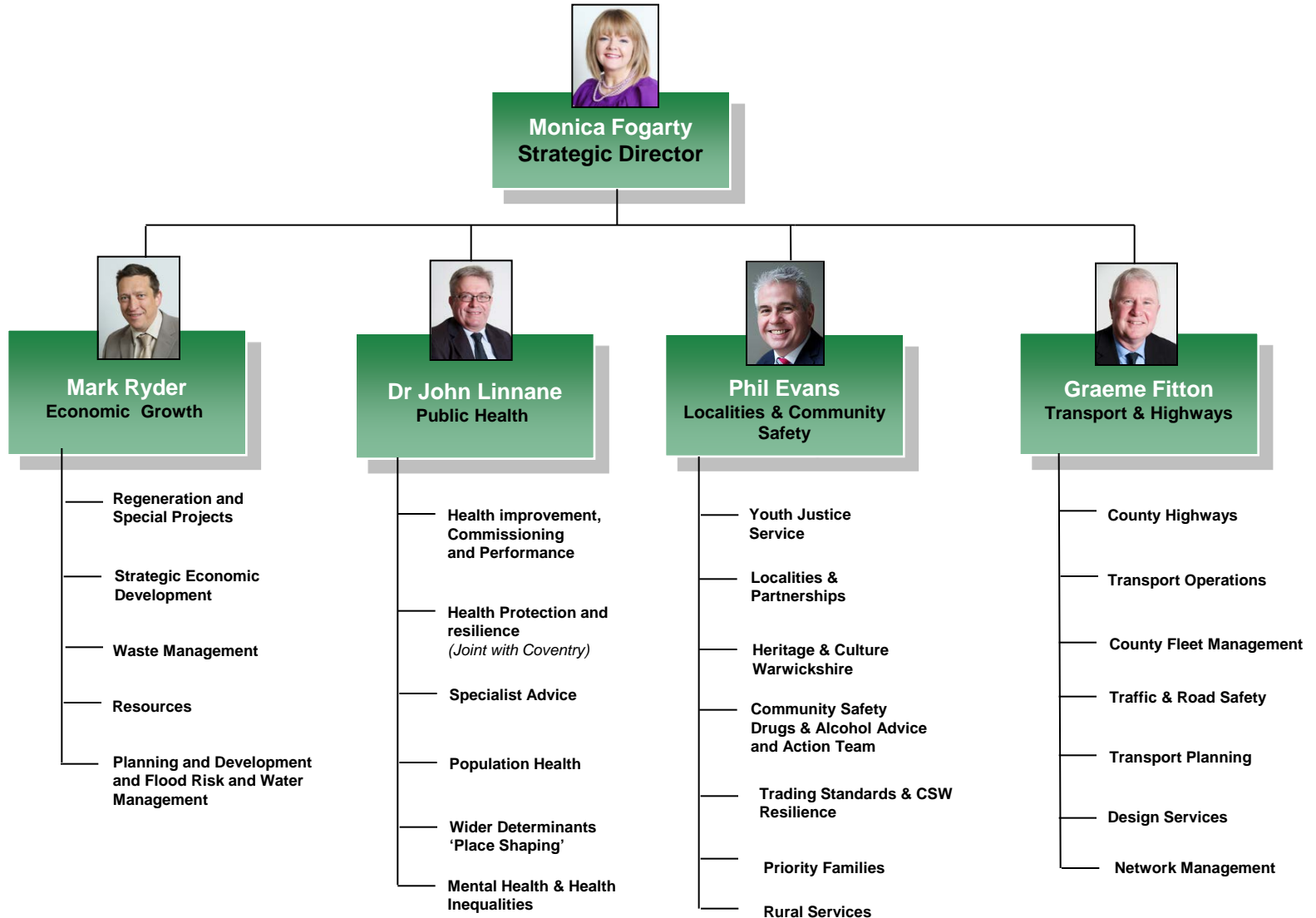
Jas Dhadli (Interim)

**Care Bill
Implementation**

David Soley

Warwickshire County Council

Communities Group



Warwickshire County Council

Resources Group



David Carter
Strategic Director



Kushal Birla
Customer Service

- One Front Door
Face-to-Face, Telephone, Web
- Customer Relations & Complaints
- Library & Information Service
- Communications
- Registration Service



Sue Evans
HR & Organisational Development

- HR Service Centre
- Employee Relations
- HR Business Partnership
- Learning & Organisational Development
- Equality & Diversity



John Betts
Finance

- Budget & Technical Projects
- Financial Accounting
- Other Services
- Financial Systems
- Exchequer
- Treasury & Pensions
- People Group
- Finance Support
- Benefits Assessment
- Income Control
- Resources Group and Schools
- Finance Support
- Payroll
- Communities Group
- Finance Support
- Fire
- Procurement



Tonino Ciuffini
Information Assets

- Schools & Network
- Production Services
- Customer & Supplier Services
- Systems Centre
- Information & Innovation



Sarah Duxbury
Law & Governance

- Legal Services
- Democratic & Member Services
- School Governance
- Corporate Risk Management, Internal Audit and Insurance
- Coroner
- Lord Lieutenancy



Steve Smith
Physical Assets

- Asset Strategy
- Construction Services
- Estates and Smallholdings
- Facilities Management
- Programme Management – Property Rationalisation



Tricia Morrison
Service Improvement & Change Management

- Development & Support
- Planning, Performance & Business Improvement
- Warwickshire Observatory

Warwickshire County Council

Warwickshire Fire & Rescue Service

Business Partners



Helen Murphy
Finance



Vanessa Belton
Performance

Business Partners



Judith Coote
HR



Kate Burgess
IT

