

Leadership Structure (from Learners to Governance)



Everton Burke
Chair



Keith Scribbins
Clerk



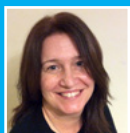
Rajinder Mann OBE
Vice Chair



Keith Buckley



Eddie Broadhead



Lynn Gouldthorp
Co-opted to Audit Committee



Paul Fitzpatrick



Frank McArdle
Co-opted



Nicola Taylor



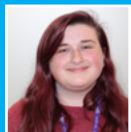
Ben Webster



Amrit Virk



Chris Prosser



Chloe Tinsley
Student Governor



Ben Wenham
Student Governor



Dawn Ward CBE
Chief Executive
& Principal



Gary Chin
Vice Principal
Corporate Services



John Beaty
Deputy Principal
Corporate Relationships



Ryan Halford
Vice Principal/
Executive Director



Learners



Vaughan Dyche
Director of
IT and Estates



Sarah Drew
Assistant Principal
Business Development,
Marketing and
Corporate Relationships



Chris Beech
Assistant Principal
& Dean



Fiona Hanson
Director of Quality and
Performance

Governors

Strategic Leadership
Team

College
Management Team