

Medicine and Emergency Care - Divisional Leadership Team



Chesterfield  
Royal Hospital  
NHS Foundation Trust



Mansur Reza  
Divisional Director



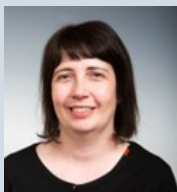
Rachel Whyman  
Head of Nursing



Joanna Fewkes  
General Manager



Katie Cave  
HR Partner



Cathy Butler  
Finance Partner



Jamie Temlett  
Deputy Head of Nursing/ Head of Unplanned  
Care



Stacie Wilson  
Unplanned Care Manager

Medicine and Emergency Care - Care Units

Acute Medicine

Emergency Department, EMU/CDU/Ambulatory Care, Frailty Unit



Rashid Sohail  
Clinical Director



Gary Durrant & Lynsey Hamer

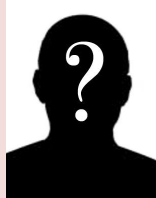
Senior Matrons



Lisa Sperring  
Service Manager



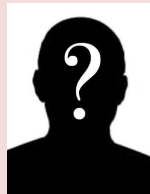
Kathryn Lendrum  
Clinical Lead (ED)



James Hankinson  
Clinical Lead (EMU)



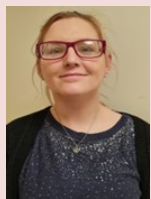
Rachel Traveller  
Assistant Service Manager



Kerry Machin  
Care Unit Coordinator



Amanda Fox  
Care Unit Co-ordinator



Stacey Walker  
Care Unit Admin

Speciality Medicine

NGS Macmillan Unit, Haematology, Nephrology Medical Day Case Unit, Diabetes, Dermatology, Oncology, Out-patient Suites 3&4, Stroke Unit



Rowena Faulkner  
Clinical Director



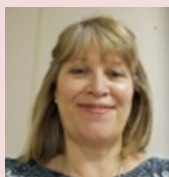
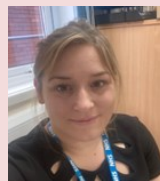
Laura Keane  
Senior Matron



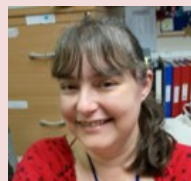
Nick Whitehead  
Service Manager



Tracy Marr & Charlotte Harrison  
Assistant Service Managers



Tracey Bowman  
Care Unit Coordinator



Jeanette Sedgwick  
Care Unit Admin

General Medicine

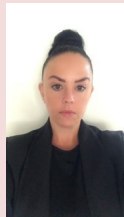
Cariology (and Cardio Respiratory), Respiratory, Rheumatology, Gastroenterology, Healthcare of the Elderly, Transitional Care



Justin Cooke  
Clinical Director



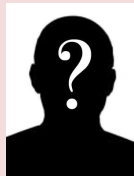
Sally Upton  
Senior Matron



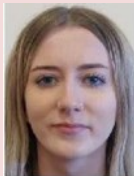
Kate Barthorpe  
Service Manager



Jayne Cole  
Assistant Service Manager



Lyndsey Freeman  
Care Unit Co-ordinator



Francesca Fokinther  
Care Unit Admin



Joe Marshall and Sarah Marchewka  
Cardio Resp Clinical Leads

Divisional Support



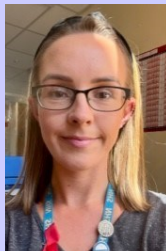
Lucy Howroyd  
Assistant HR Partner



Ashleigh Marris-Murrell and Susan Wootton  
Quality Governance Matrons



Millie Rayner  
Business Admin Apprentice



Martina Clarke  
Divisional Co-ordinator



Tracy Harding  
Lead Workforce Co-ordinator



Joel Platts and Kate Lamb  
Medical Workforce Officers