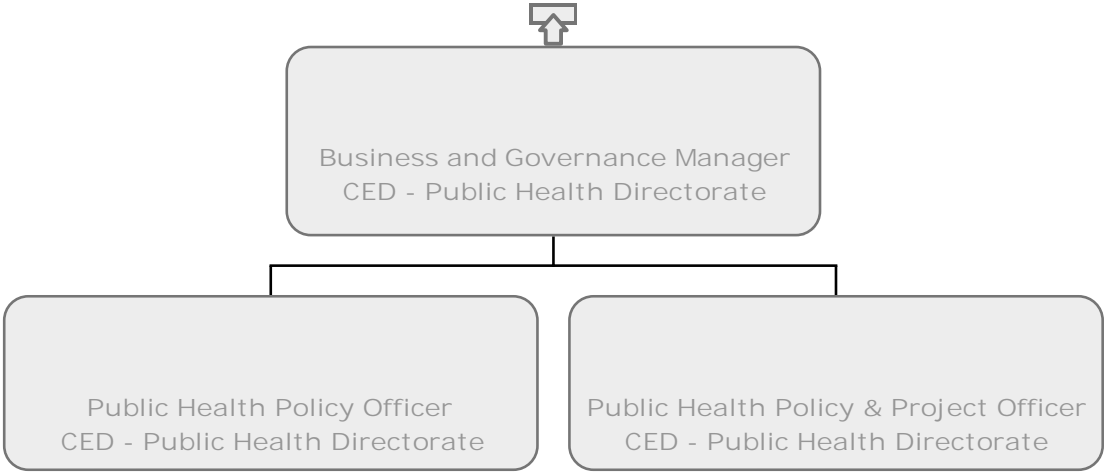
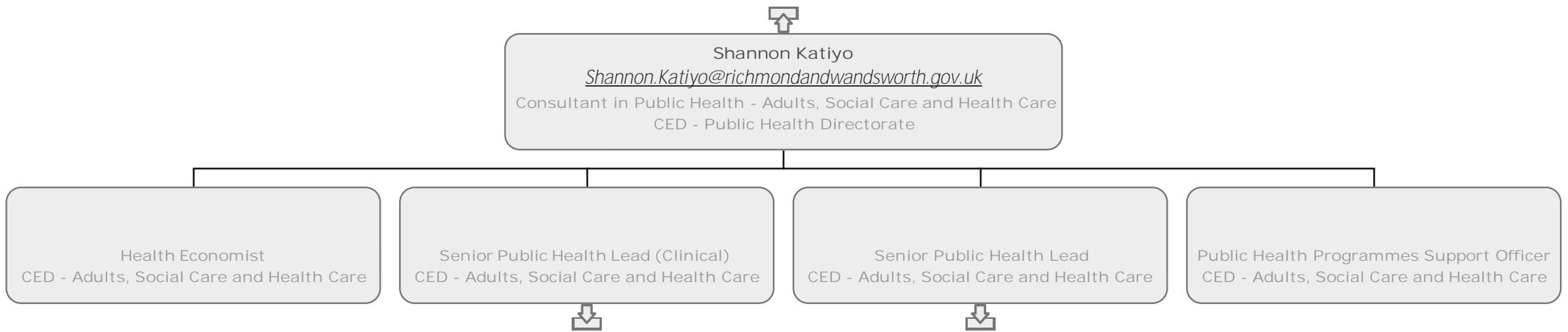
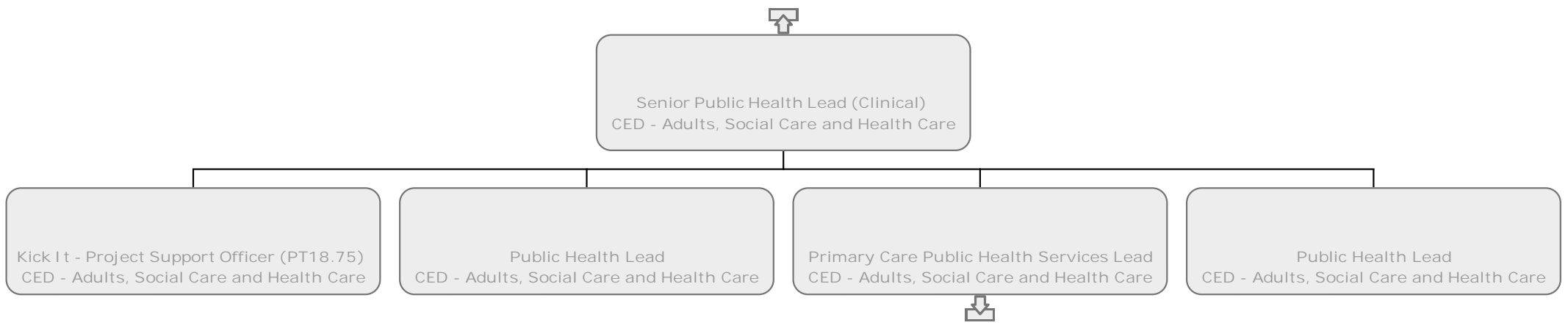


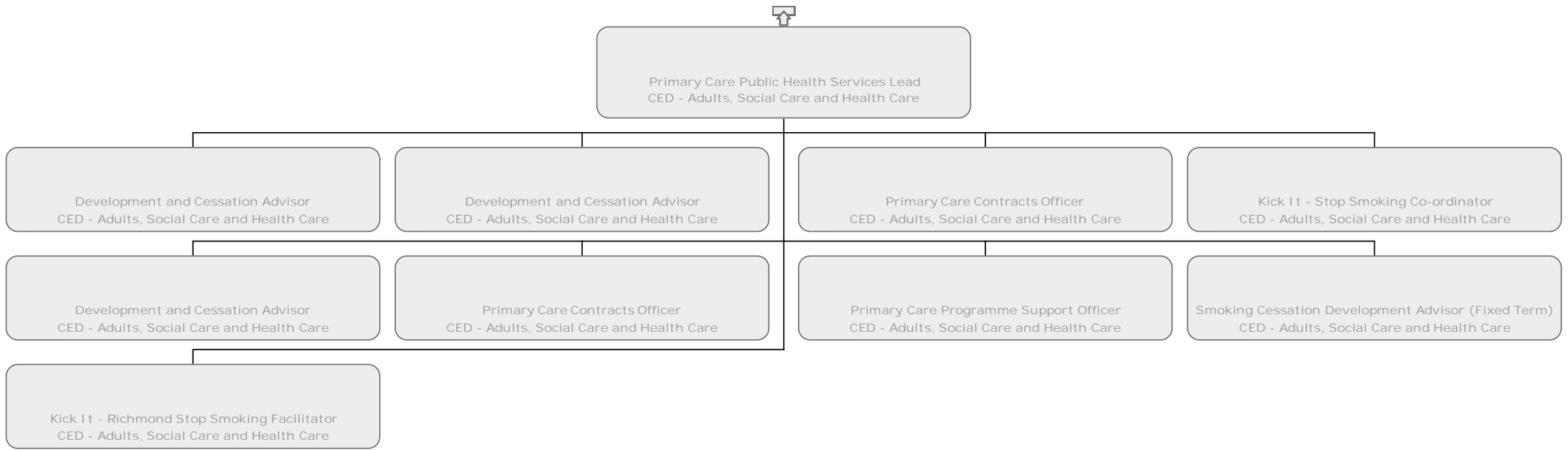
# Public Health

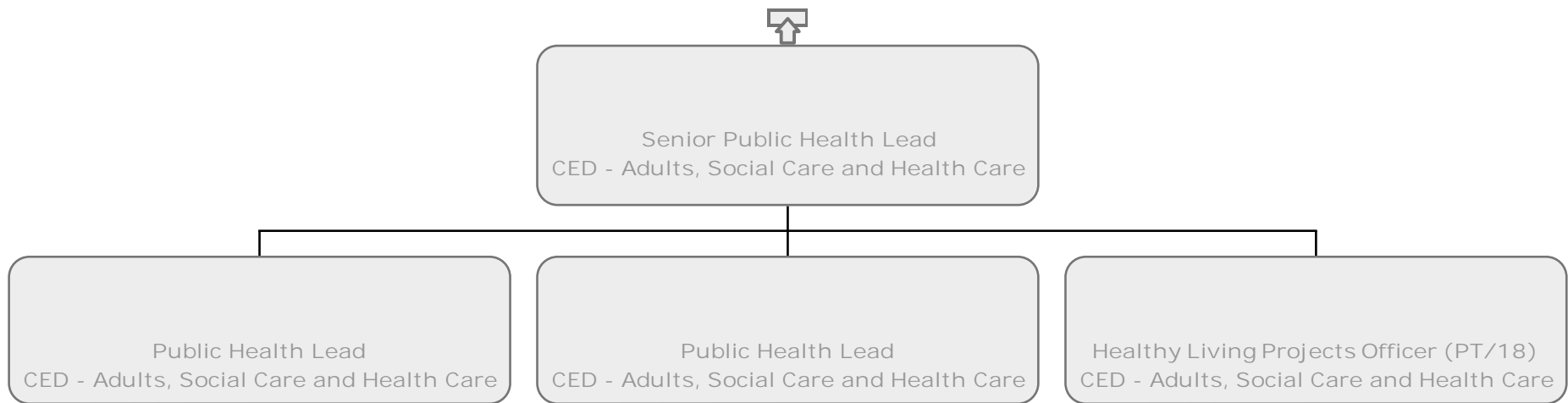






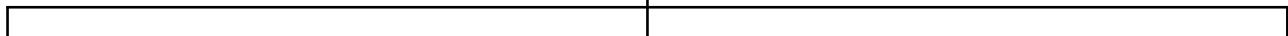








Anna Bryden  
[Anna.Bryden@richmondandwandsworth.gov.uk](mailto:Anna.Bryden@richmondandwandsworth.gov.uk)  
Consultant in Public Health - Children & Targeted Interventions  
CED - Public Health Directorate



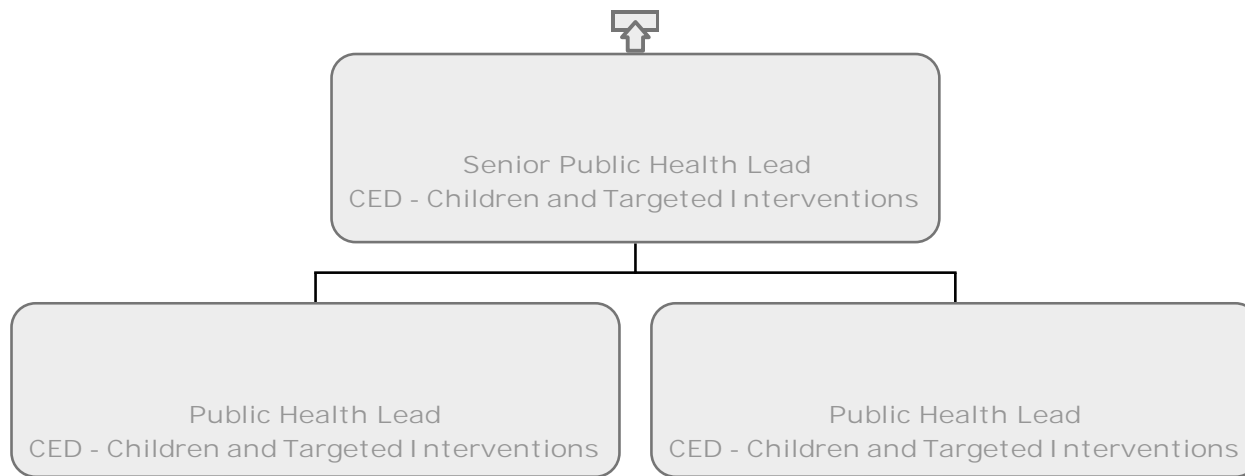
Public Health Programmes Support Officer  
CED - Children and Targeted Interventions

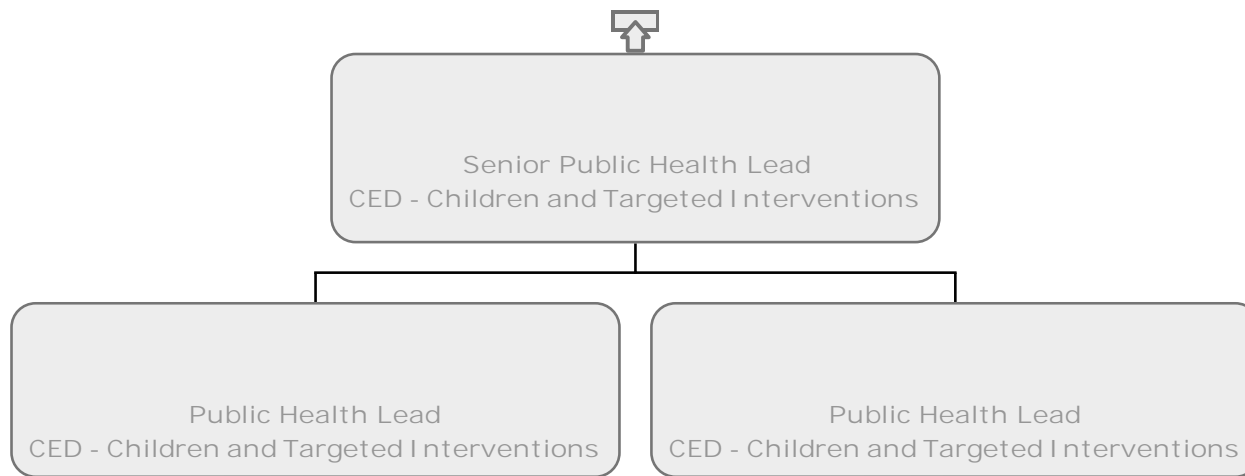
Senior Public Health Lead  
CED - Children and Targeted Interventions

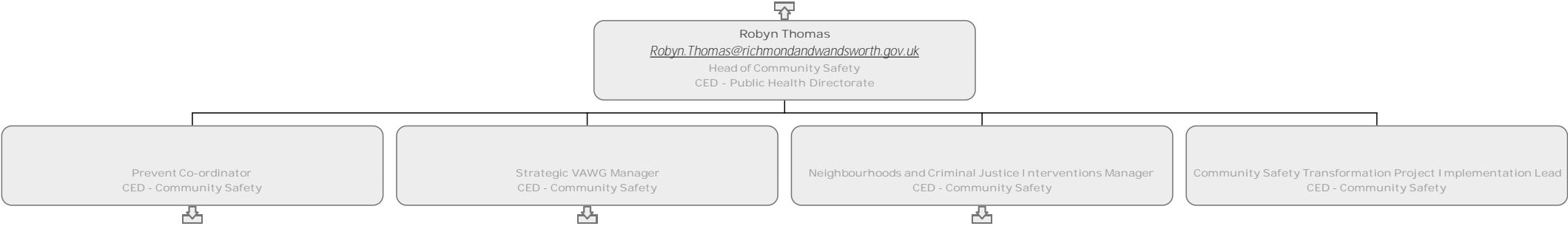
Senior Public Health Lead  
CED - Children and Targeted Interventions













Prevent Co-ordinator  
CED - Community Safety



Prevent Education Officer  
CED - Community Safety

