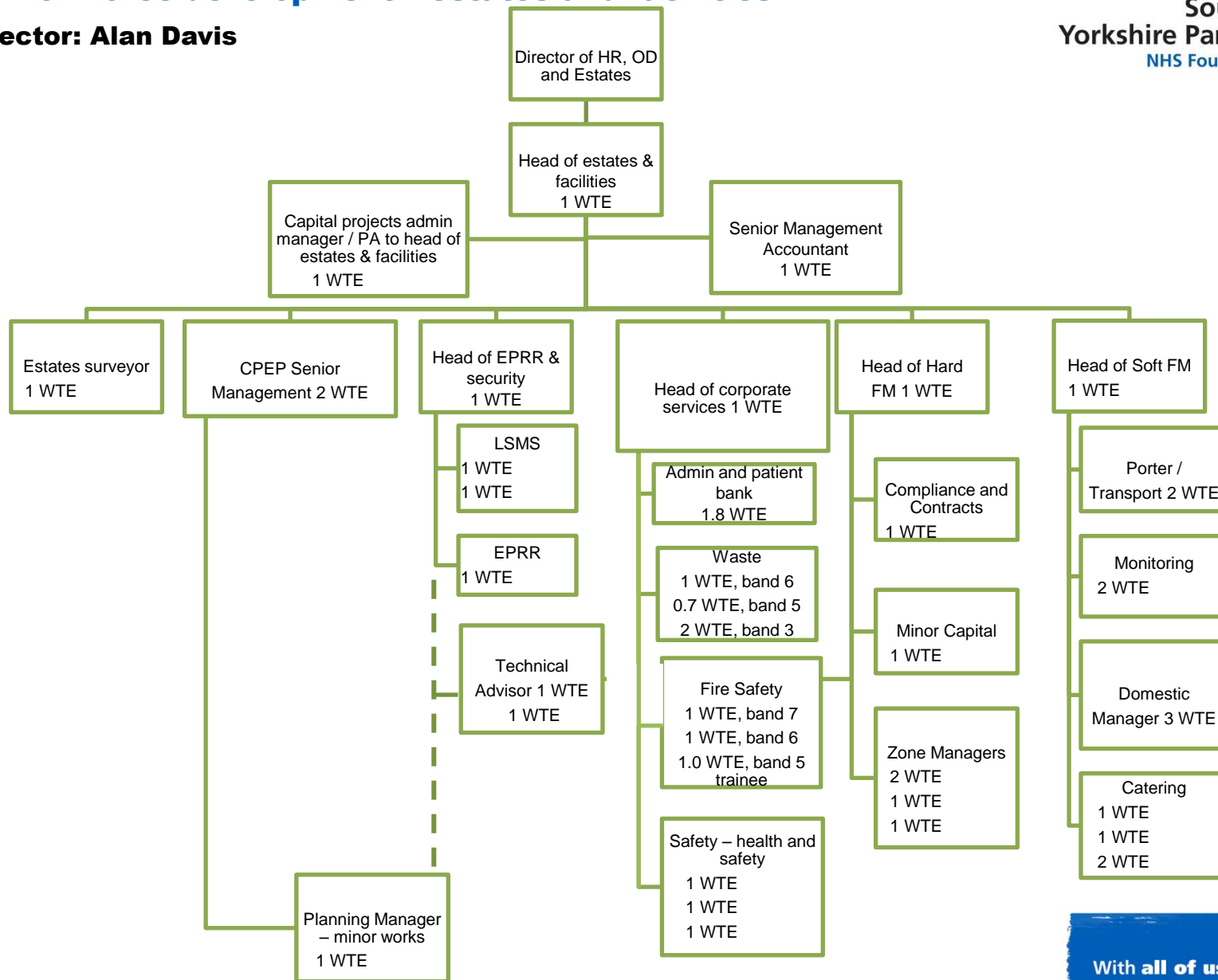
Four large, stylized L-shaped corner graphics are positioned around the central text. The top-left corner is orange, the top-right is green, the bottom-left is blue, and the bottom-right is pink. They have a slightly distressed, hand-painted appearance.

# **Organisation structure human resources and estates and facilities**

## **February 2019**

# HR and workforce development – estates and facilities

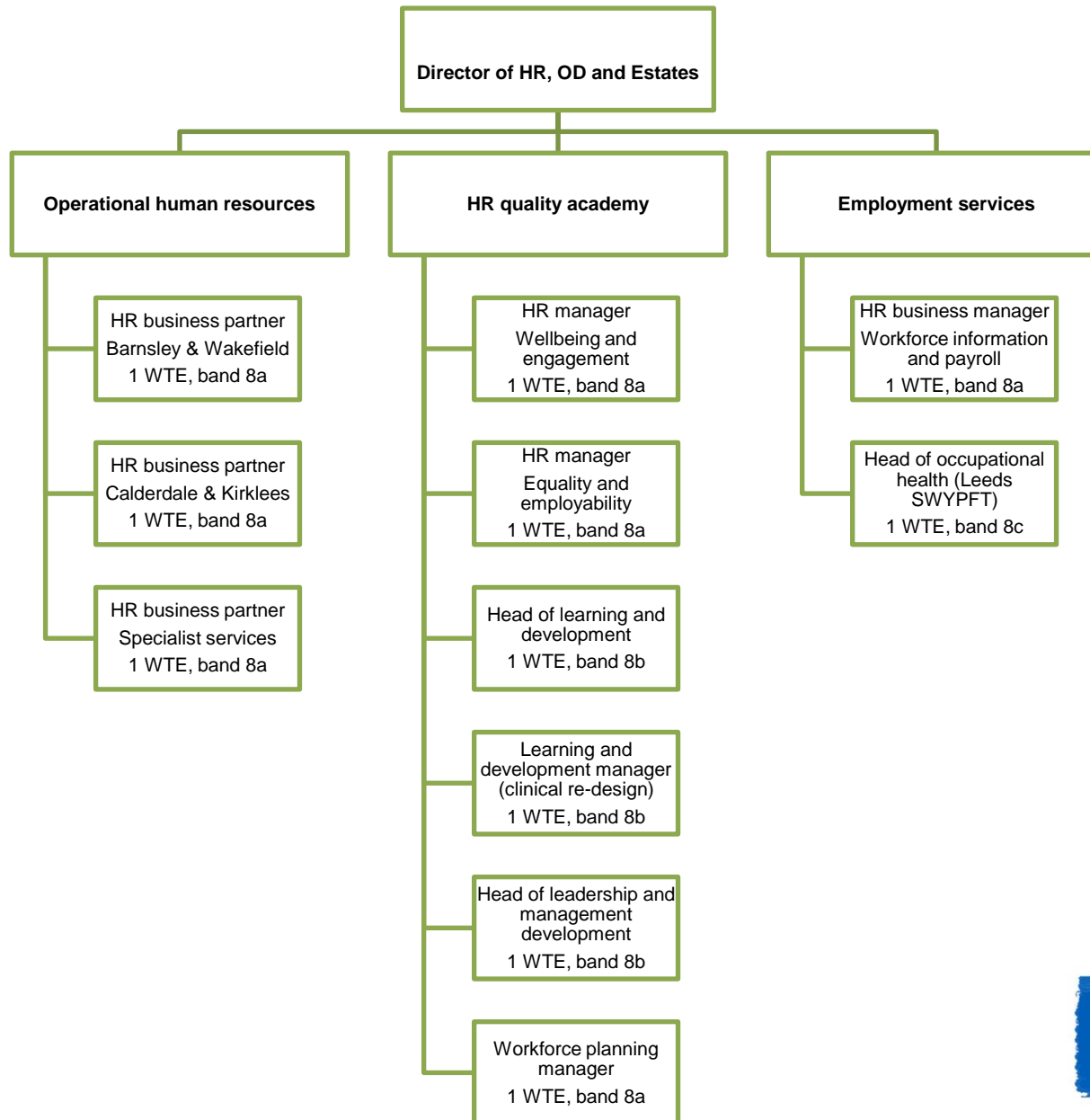
**Lead Director: Alan Davis**



With **all of us** in mind.

# HR and workforce development – senior team structure

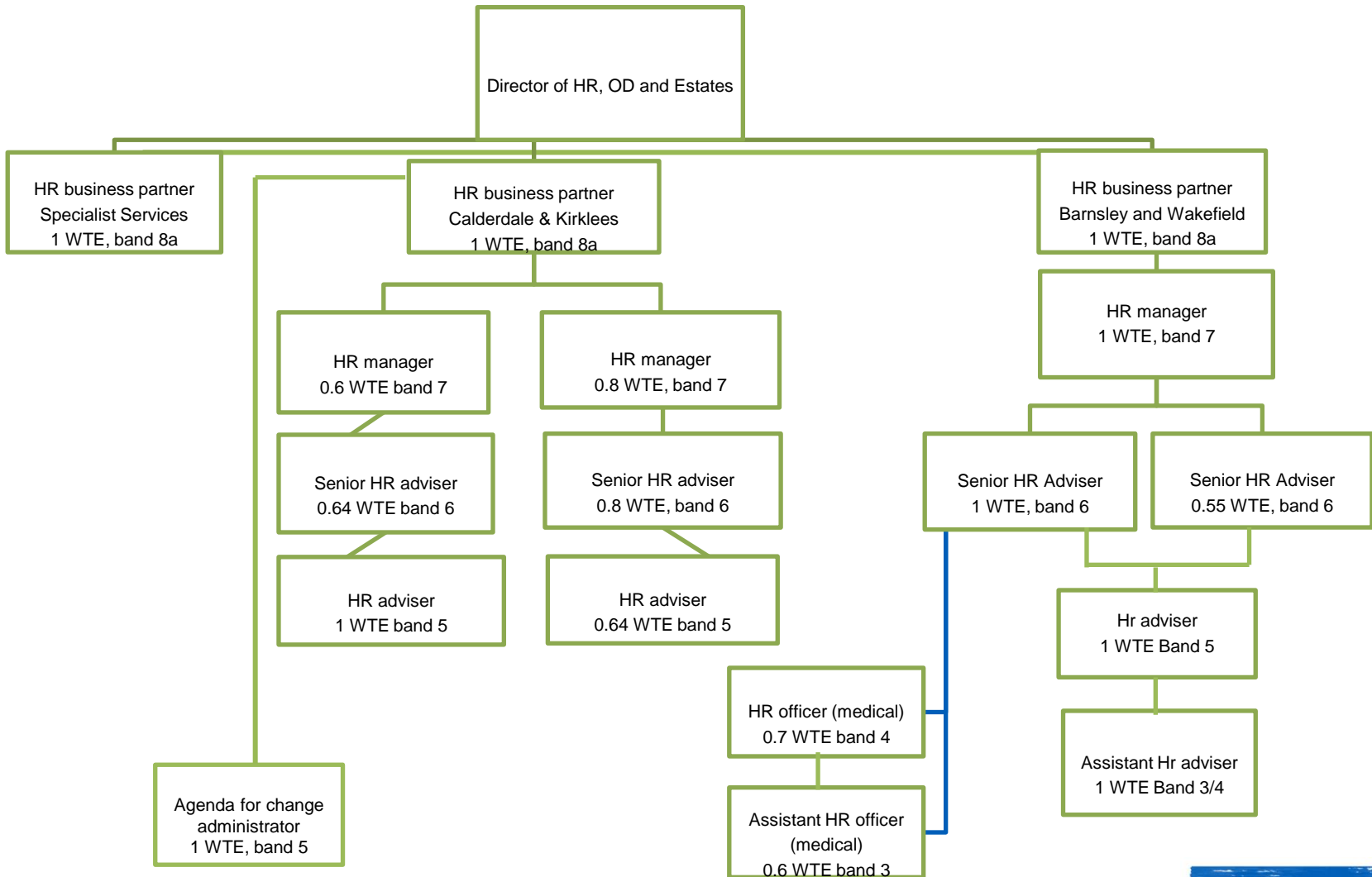
**Lead Director: Alan Davis**



With **all of us** in mind.

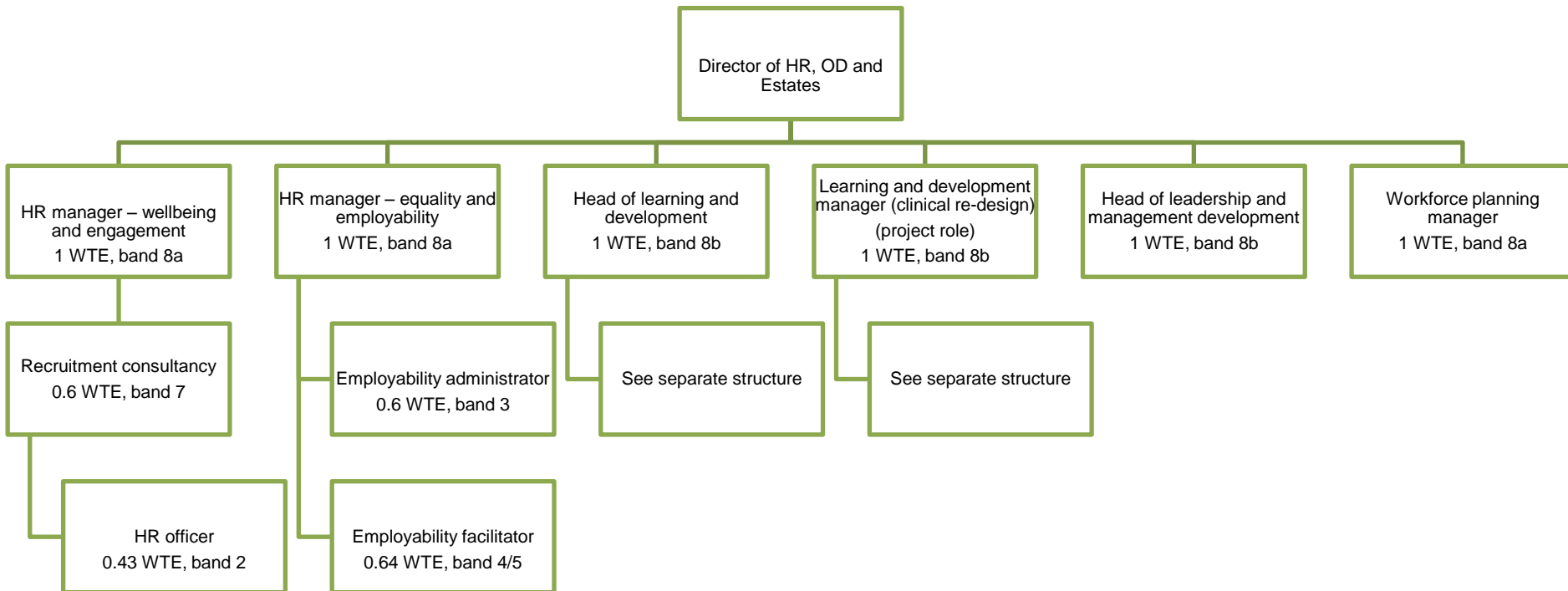
# HR and workforce development – operational structure

**Lead Director: Alan Davis**



## HR and workforce development – Quality Academy

**Lead Director: Alan Davis**

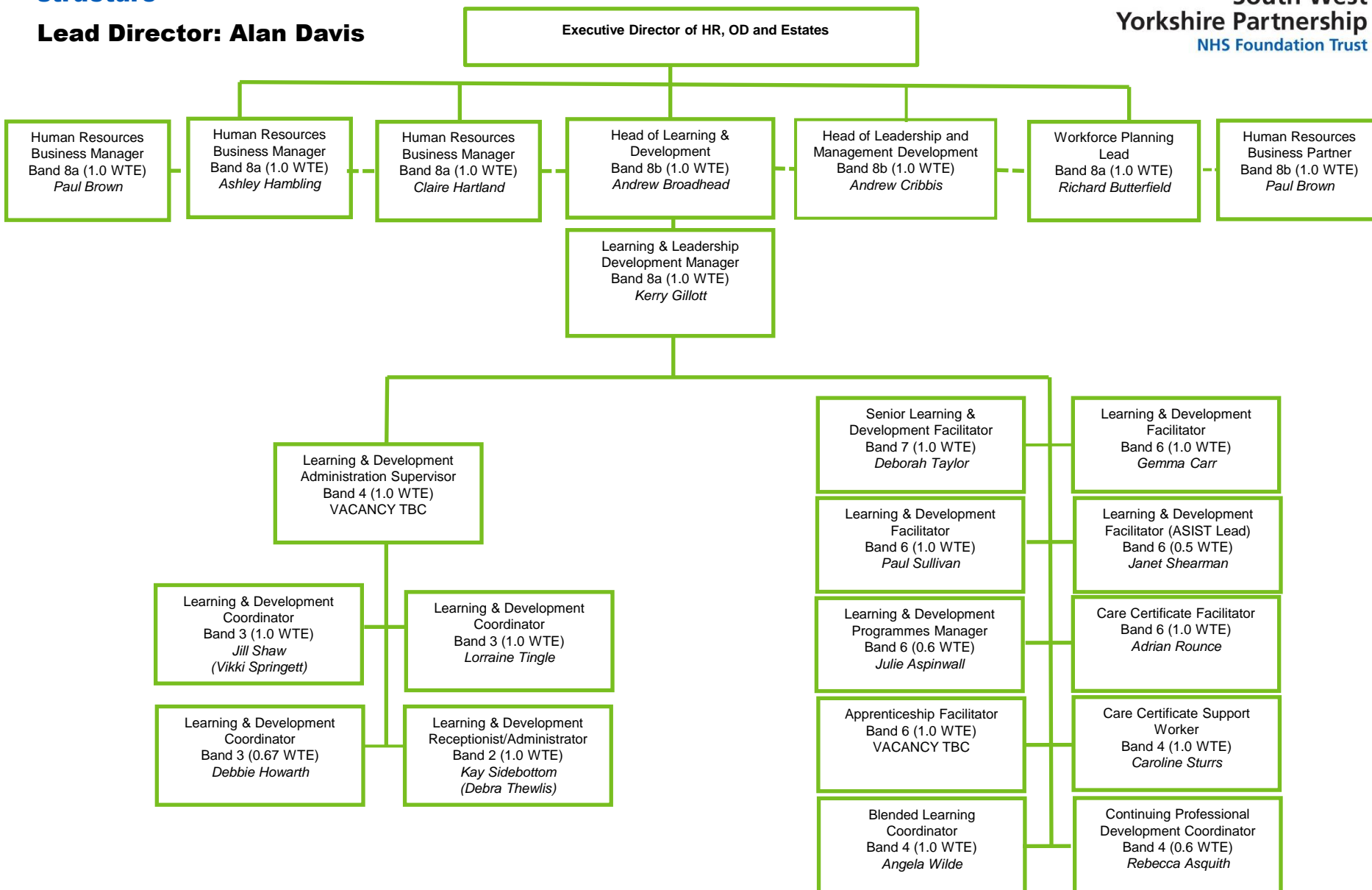


# HR quality academy and learning and development organisational structure

**Lead Director: Alan Davis**

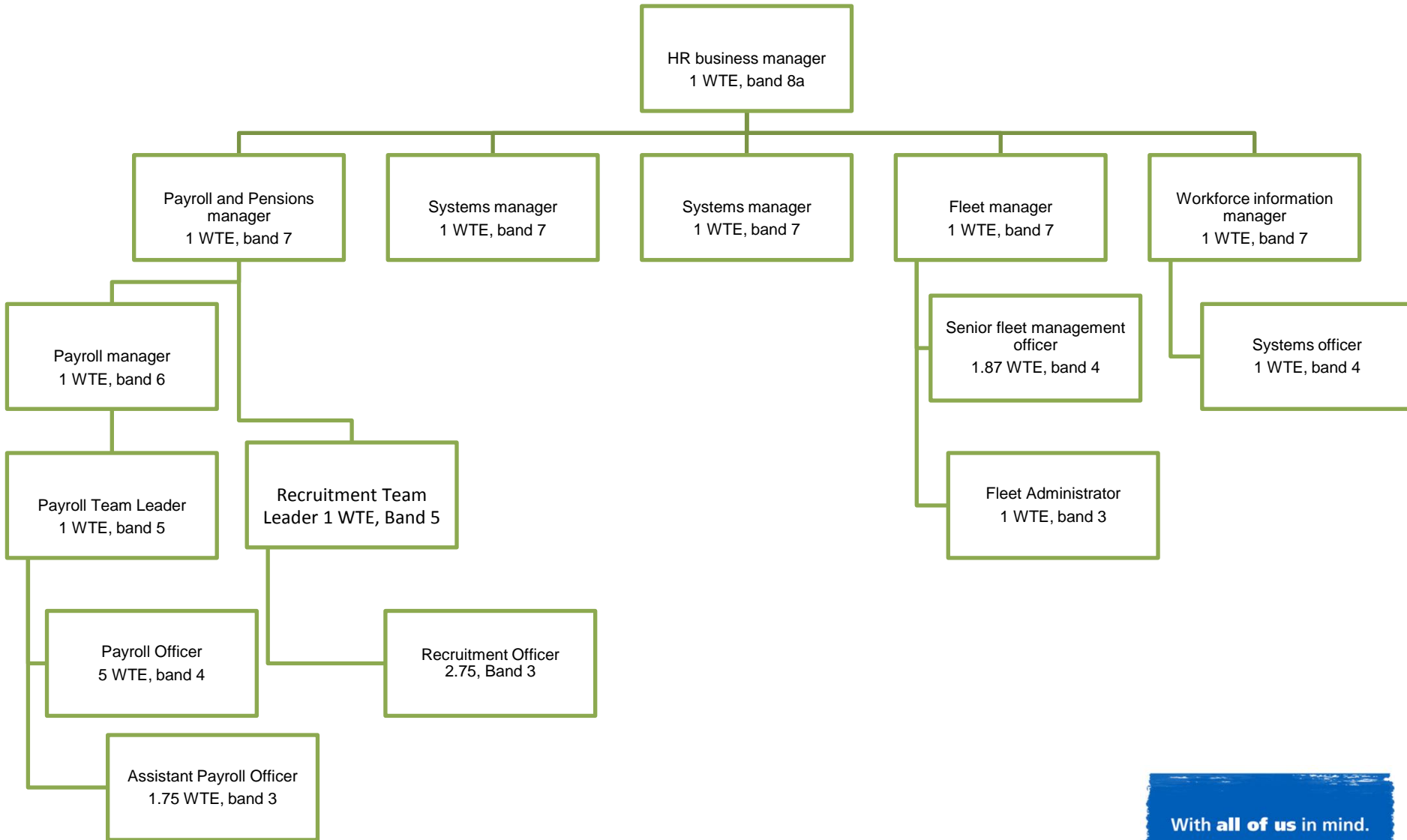


**South West  
Yorkshire Partnership**  
NHS Foundation Trust



## HR and workforce development – employment services

**Lead Director: Alan Davis**



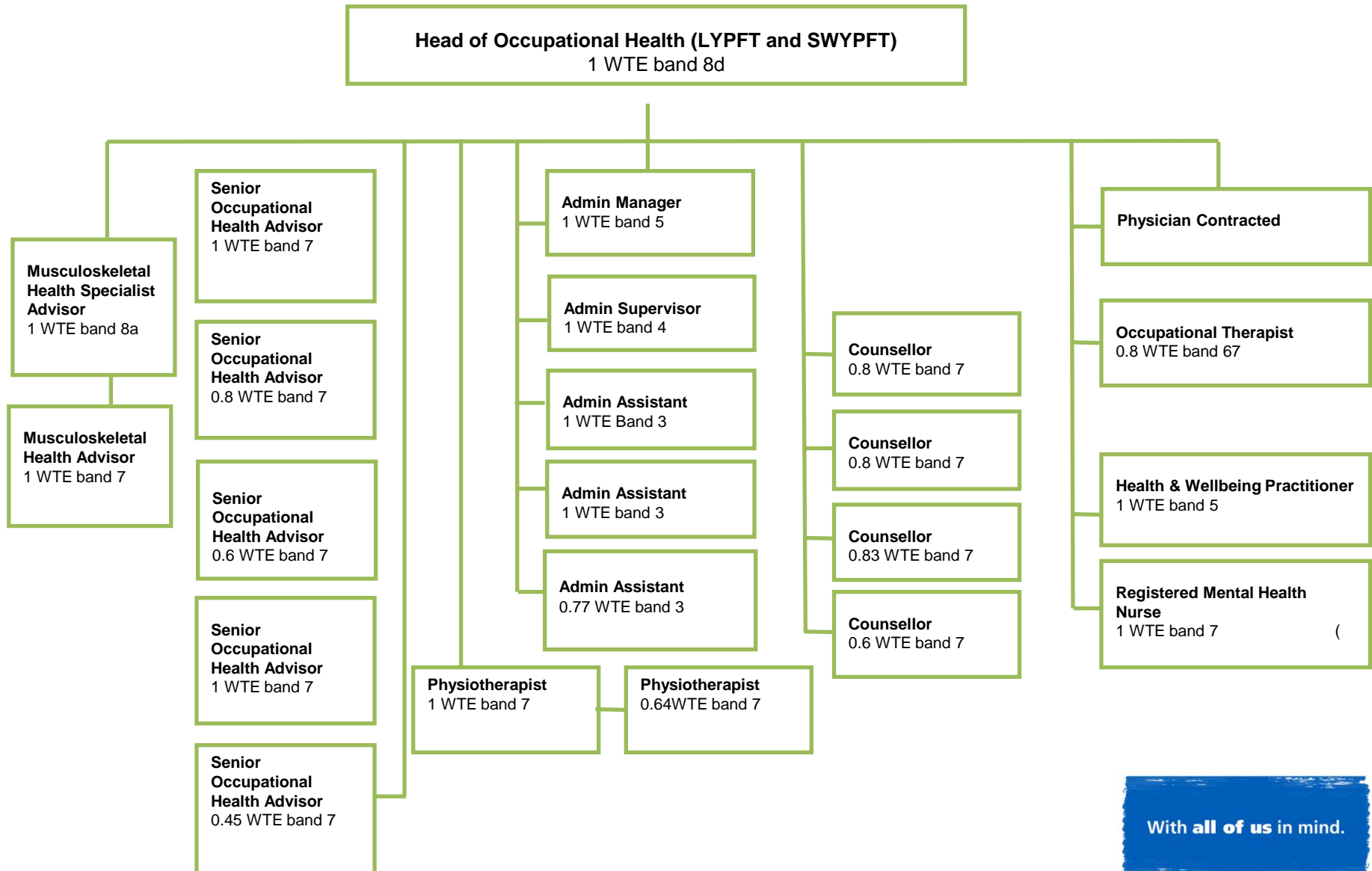
With **all of us** in mind.

# Occupational Health and Wellbeing

**Lead Director: Alan Davis**



**South West  
Yorkshire Partnership**  
NHS Foundation Trust



With **all of us** in mind.