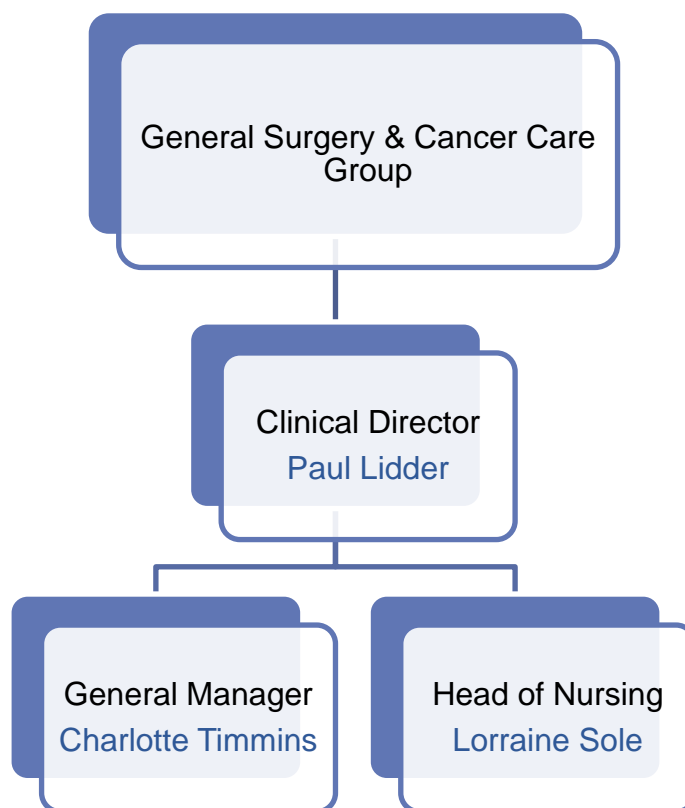


New Care Group Senior Triumvirate Structure

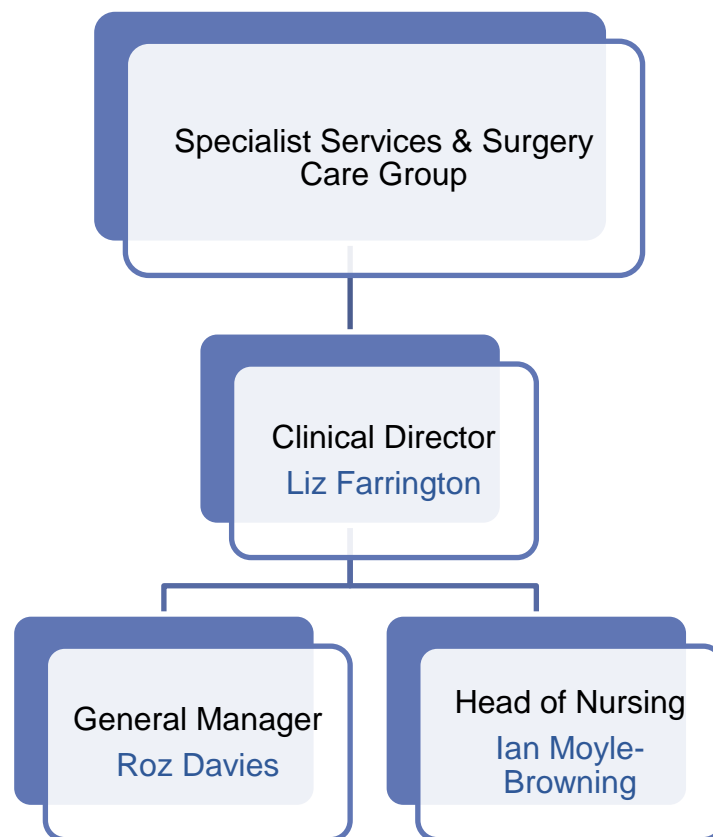
(including interim arrangements for
colleagues who are acting up/
covering a post and/ or have not
completed the formal assessment
process)

As at 19 August 2019

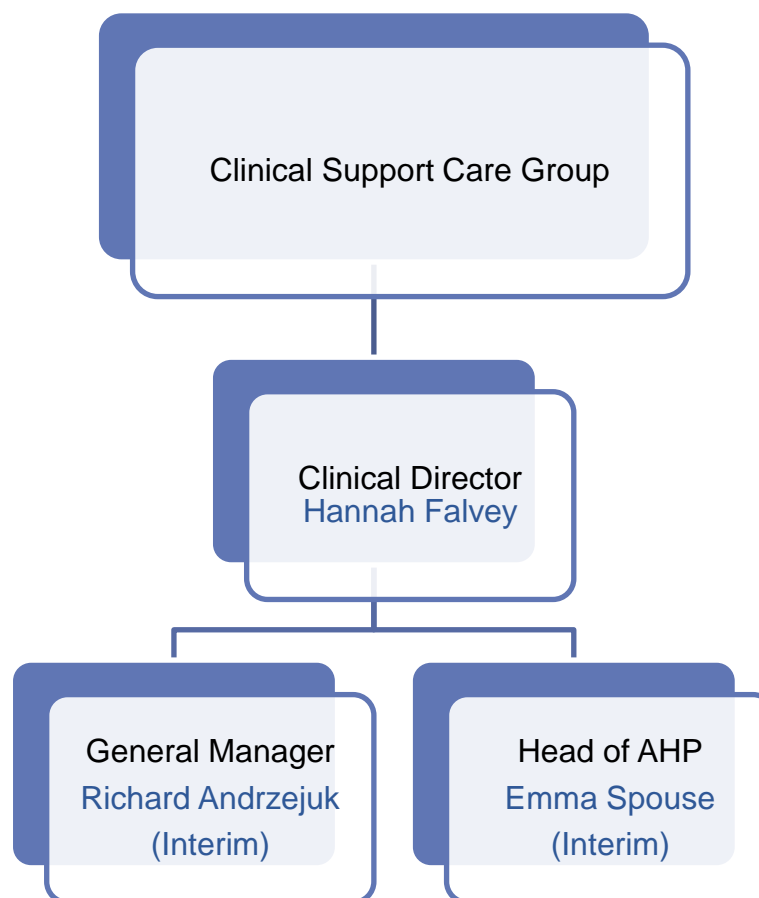
General Surgery & Cancer Care Group



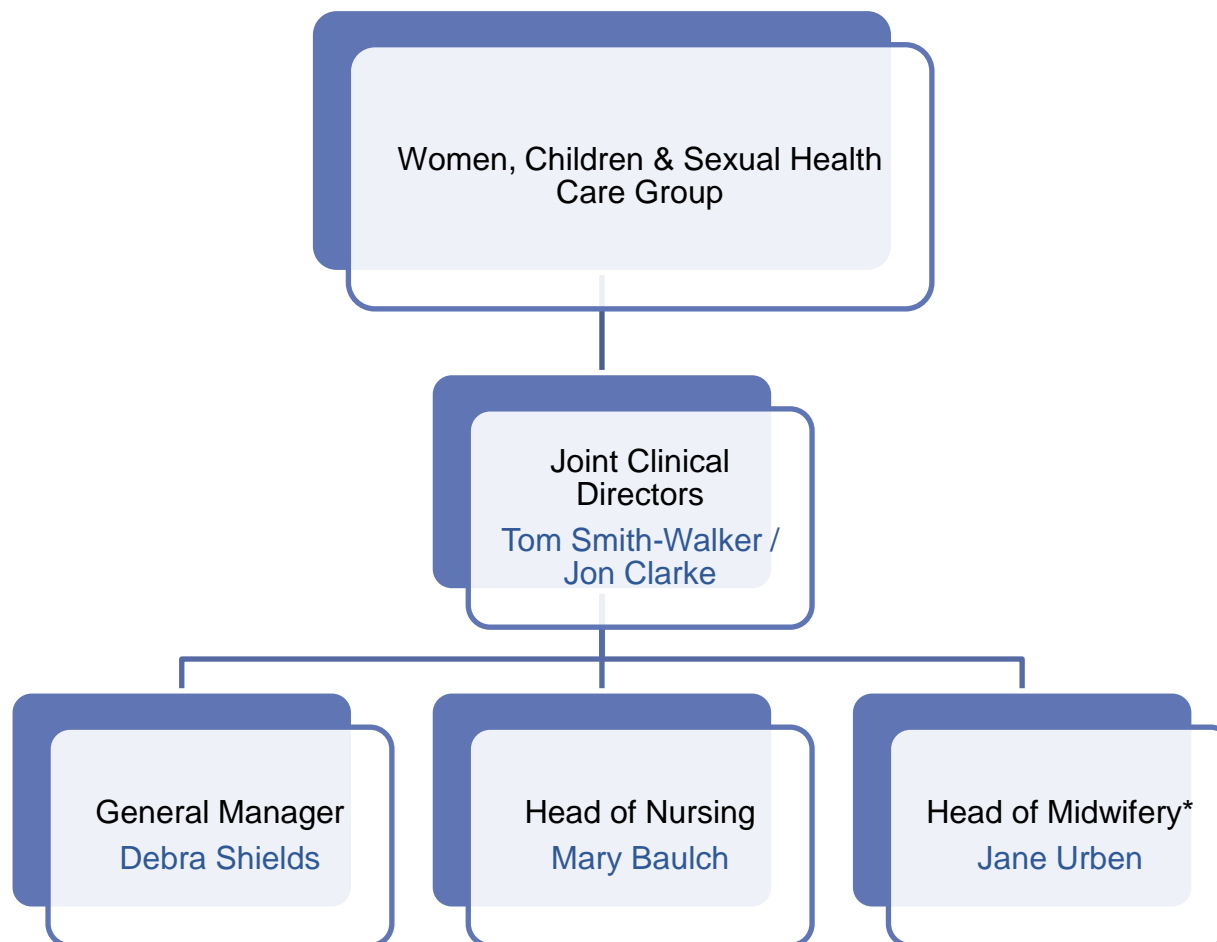
Specialist Services & Surgery Care Group



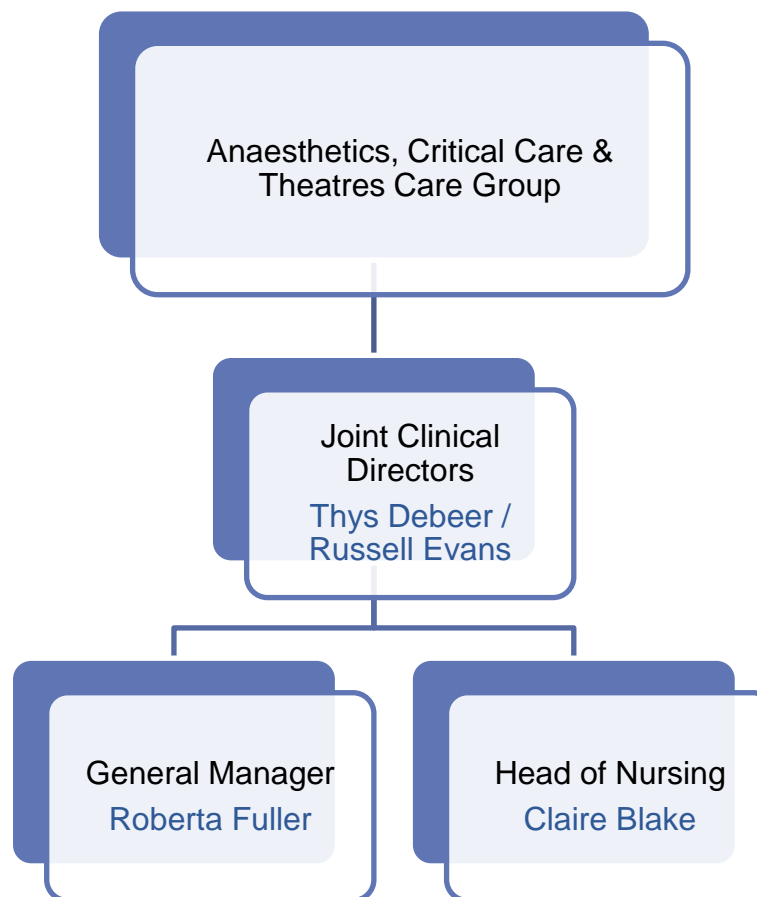
Clinical Support Care Group



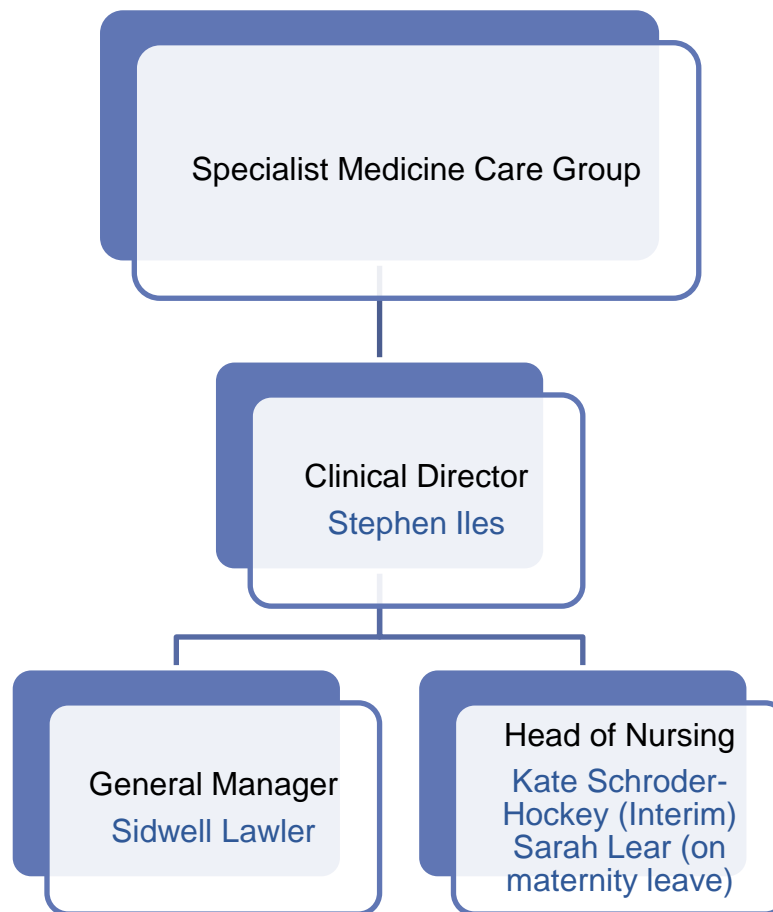
Women, Children & Sexual Health Care Group



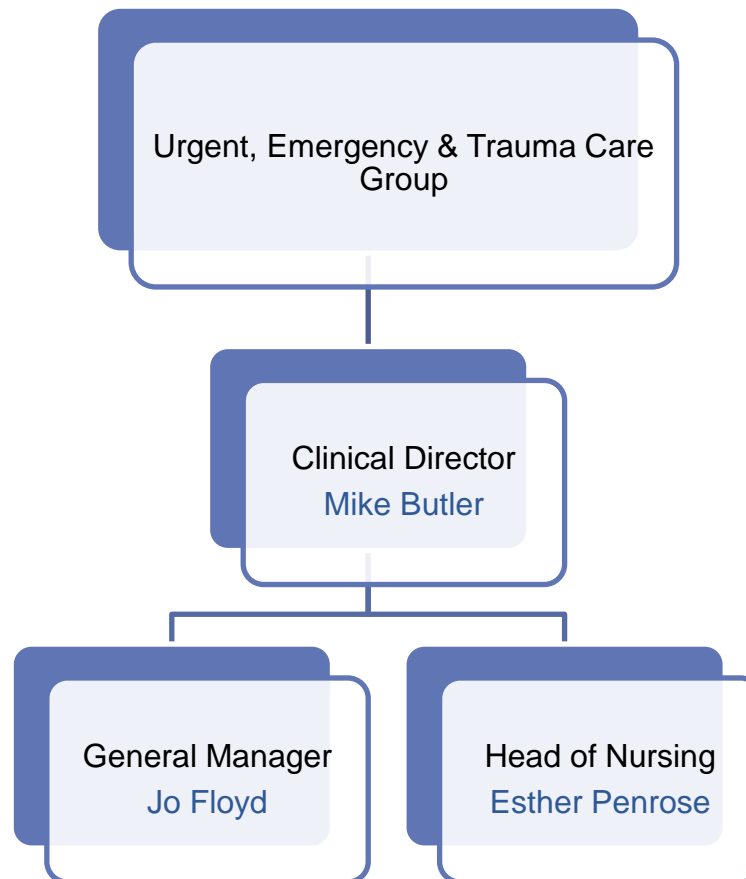
Anaesthetics, Critical Care & Theatres Care Group



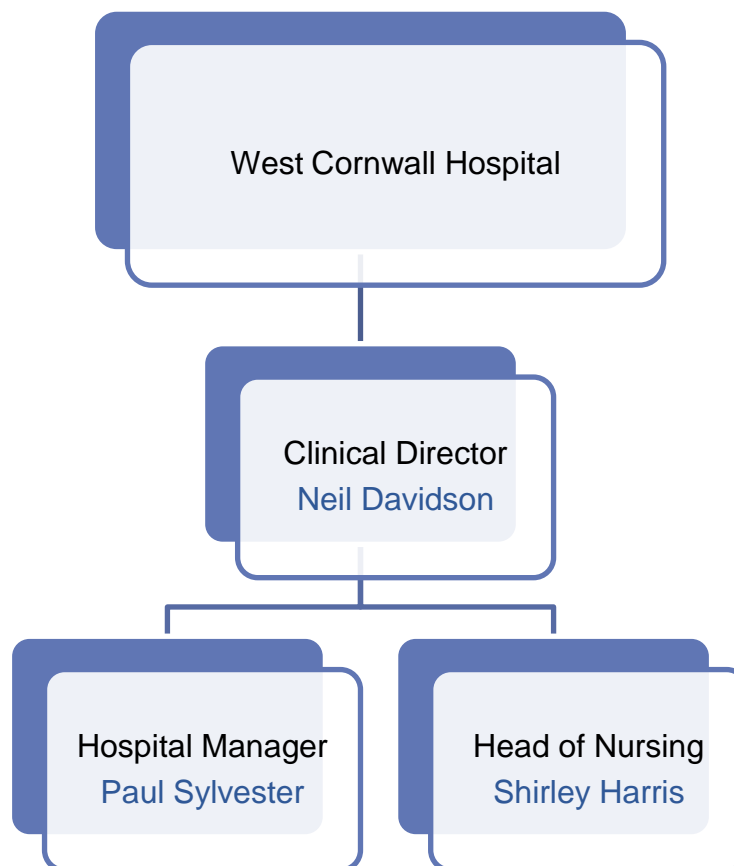
Specialist Medicine Care Group



Urgent, Emergency & Trauma Care Group



West Cornwall Hospital



St Michael's Hospital

