

# Director Team

**Jon Rush**  
Chair

**David Rogers**  
Medical Director / Accountable Officer

**Peter Rooney**  
Chief Operating Officer

**Charles Welbourn**  
Chief Finance Officer

**Anna Stabler**  
Director of Nursing & Quality

Director of Children’s Integration

**Caroline Rea**  
Director of Primary Care & ICC Development

**Stephen Singleton**  
Clinical Director—CLIC



# Clinical Leadership Team

**David Rogers**  
Medical Director / Accountable Officer

**Amanda Boardman**  
Clinical Lead for Children’s Commissioning, Mental Health,  
Learning Disability and Safeguarding

**Colin Patterson**  
Clinical Lead for Primary Care & ICCs Development

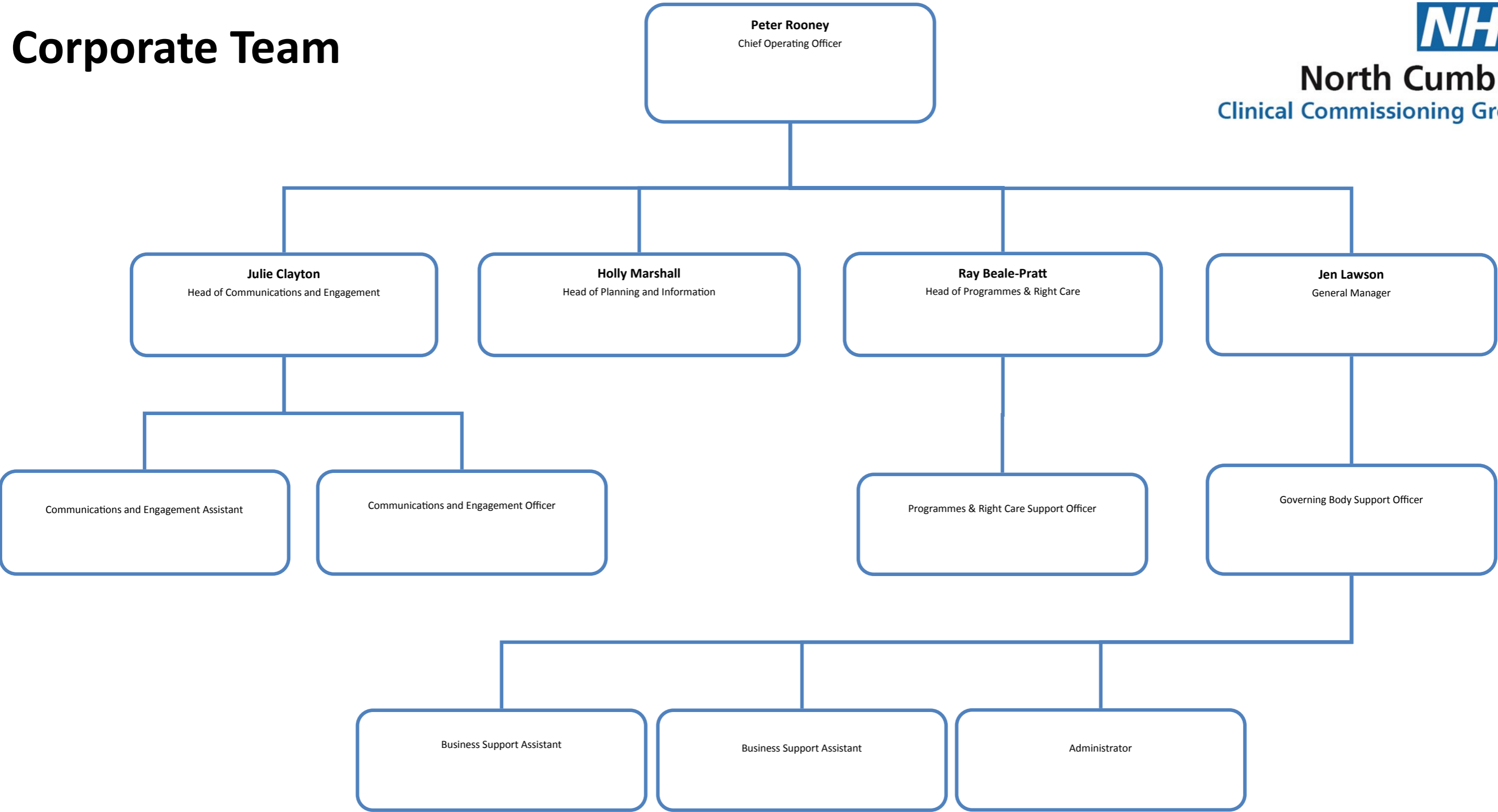
**Andrea Loudon**  
Clinical Lead for Pharmacy and Medicines Optimisation

**Helen Horton**  
Clinical Lead for Commissioning & Specialised  
Commissioning

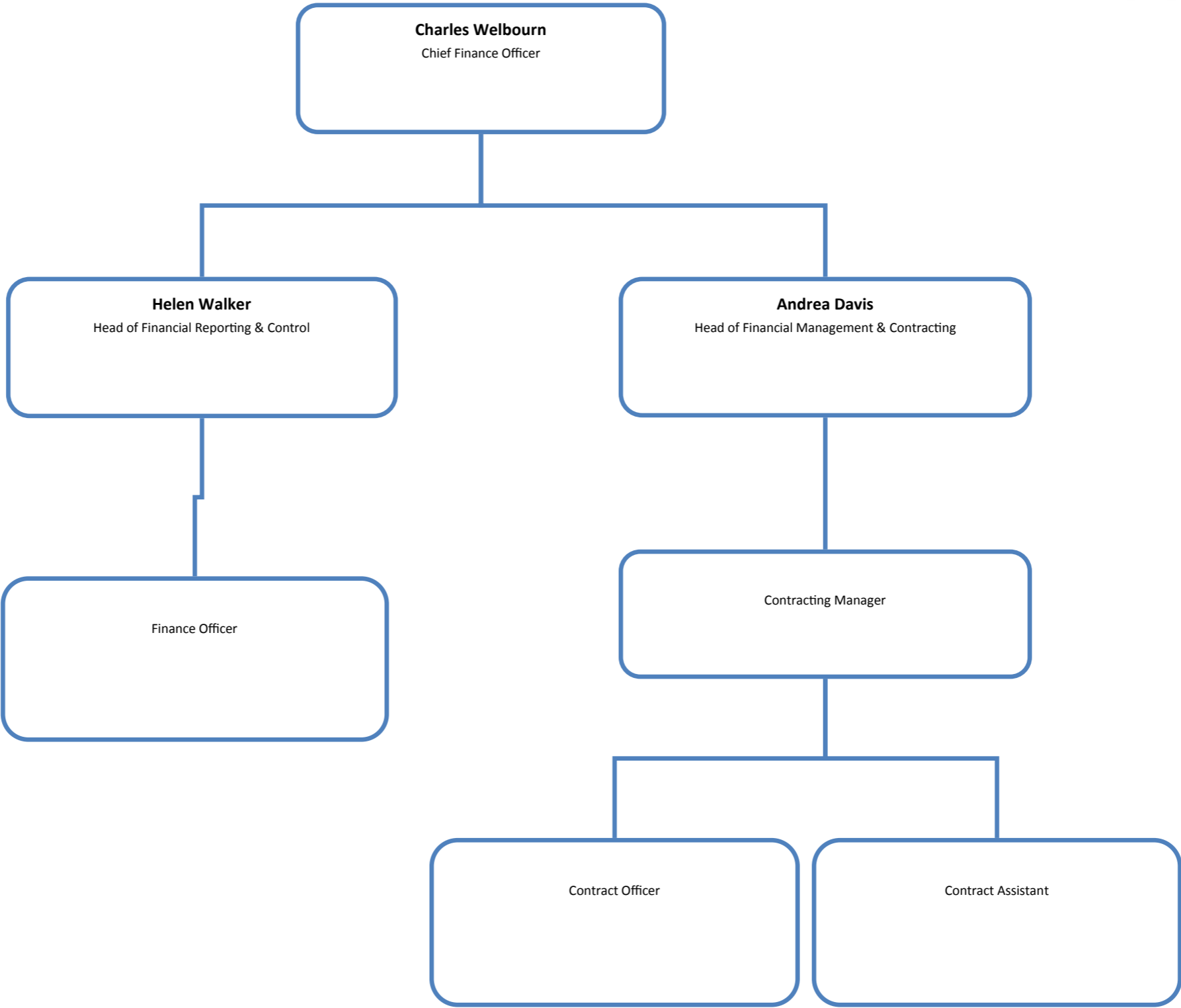
**Stephen Singleton**  
Clinical Director of Innovation



# Corporate Team



# Finance & Contracting Team



# Commissioning Team



**North Cumbria**  
Clinical Commissioning Group

**Peter Rooney**  
Chief Operating Officer.

**Anita Barker**  
Deputy Director of Commissioning

**Andy Airey**  
Deputy Director of Commissioning

**Alison Clegg**  
Head of Commissioning

**Sharon Kelly**  
Head of Commissioning

**Michelle Mulcahy**  
Senior Commissioner

**Tania Desborough**  
Commissioner: Mental Health & Learning Disabilities

**Vikki Ford-Powell**  
Senior Commissioning Manager

Commissioning Officer

Commissioning Project Officer

Commissioning Project Officer

Commissioning Senior Administrator

Administrator

Administrator

Commissioning Senior Administrator



# Primary Care & ICC Development Team



**Caroline Rea**  
Director of Primary Care & ICC Development

Primary Care & ICC Development Support Officer

Administrator

Administrator

**Fiona Chatten**  
Primary Care Lead

**Noleen Devlin**  
Primary Care Nurse Development

**Andrew Gosling**  
General Practice Commissioner

**Ann-Marie Grady**  
Primary Care & ICC Development Manager

Primary Care & ICC Development Engagement Officer

Primary Care & ICC Development Support Officer

Primary Care & ICC Development Co-Ordinator



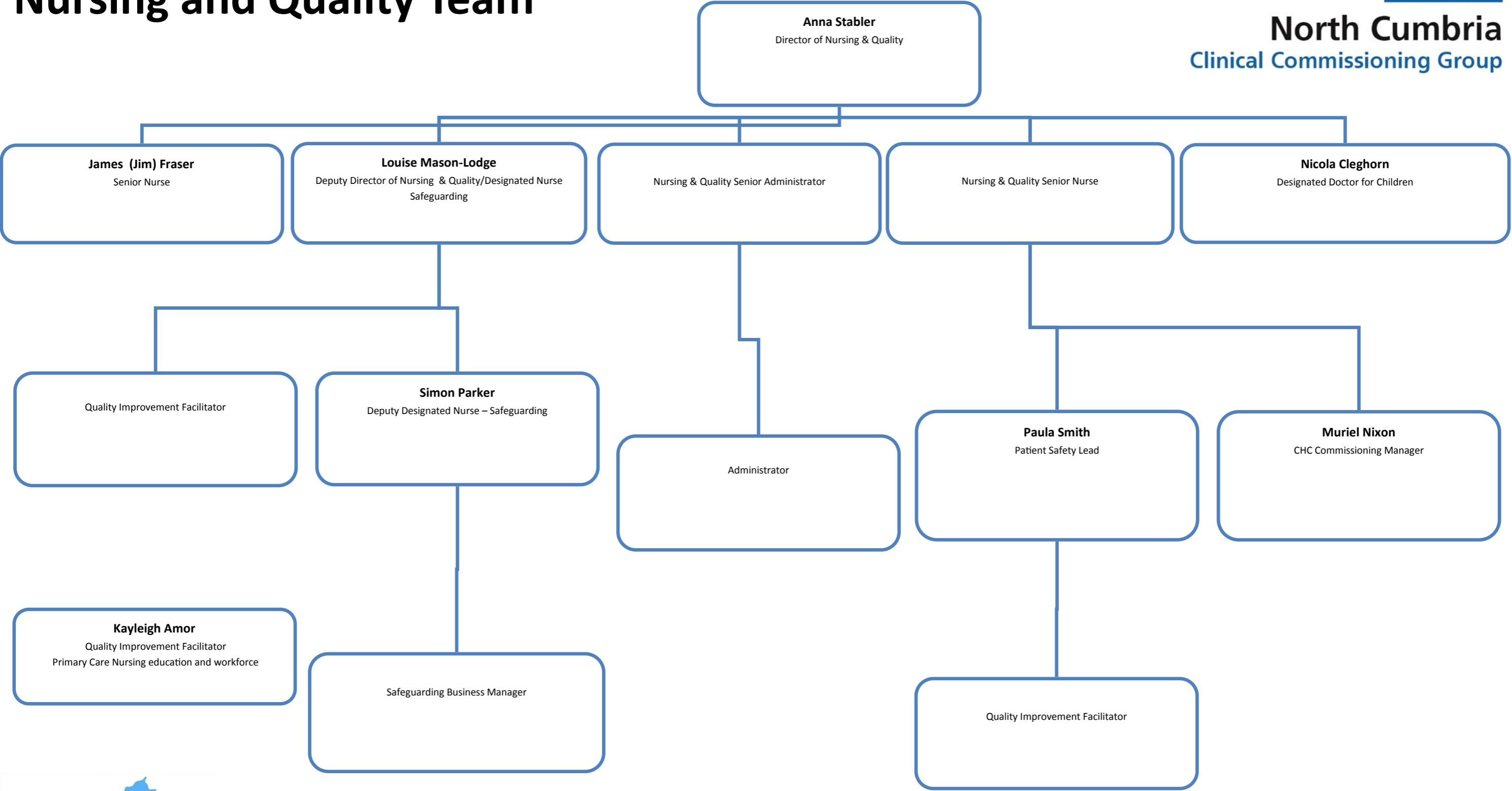
Primary Care & ICC Development Support Officer

**Andrea Loudon**  
Primary Care & Medicines Lead

Primary Care & ICC Development Support Officer

Primary Care & ICC Senior Administrator

# Nursing and Quality Team



# Children’s Integration Team

