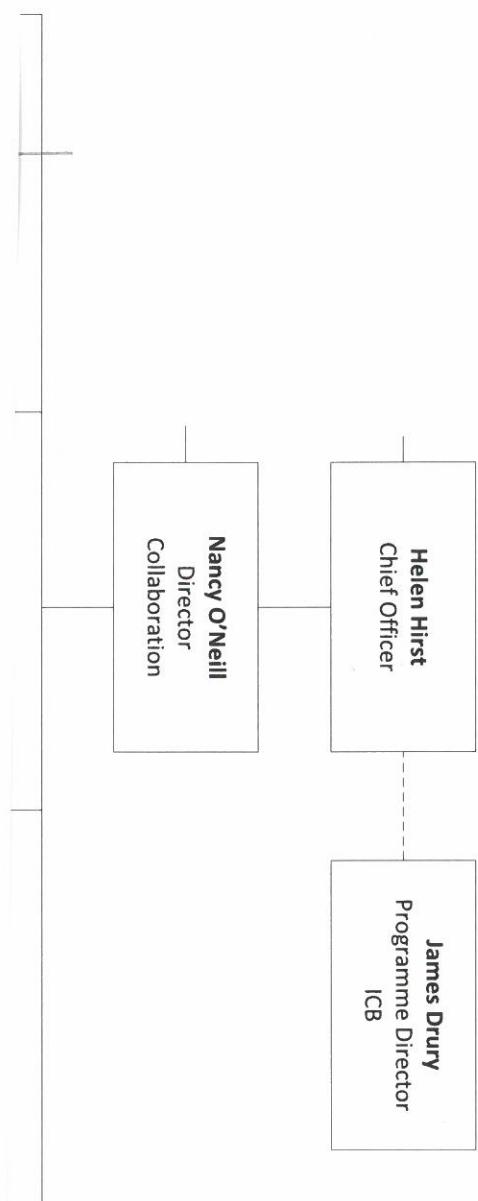
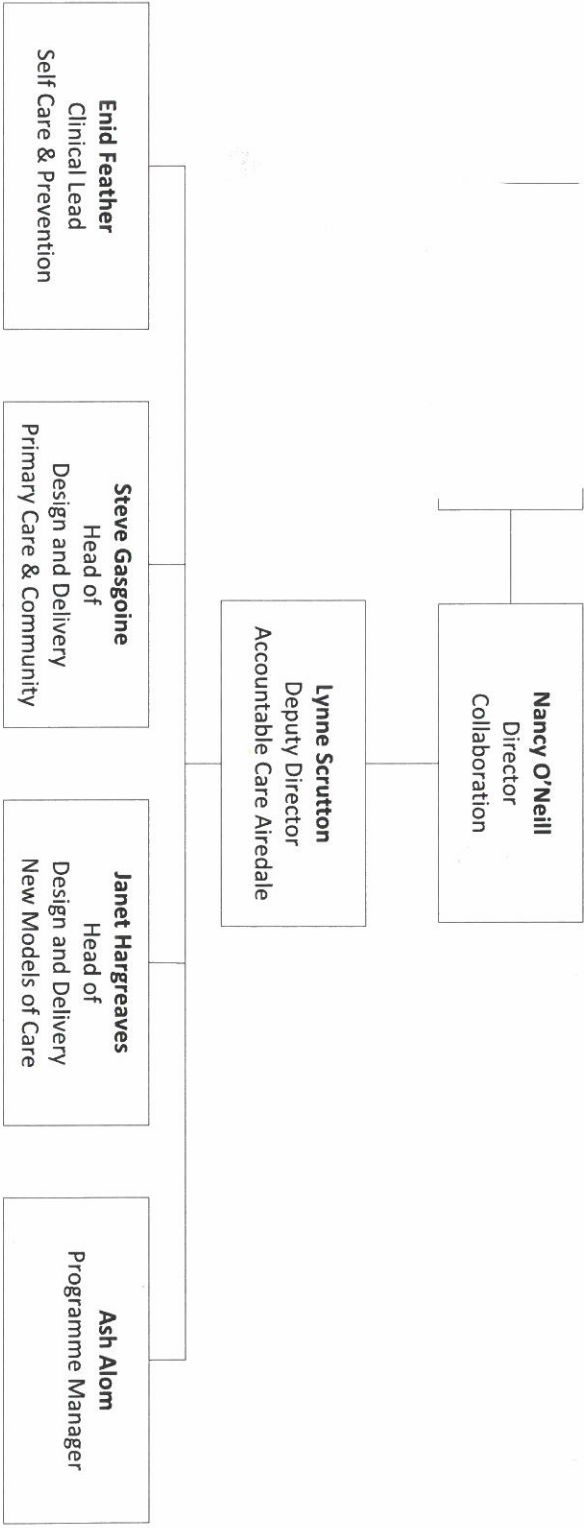


SENIOR MANAGEMENT TEAM



COLLABORATIVE TEAM



ACCOUNTABLE CARE AIREDALE

Liz Allen
Director
Accountable Care Bradford

Vicki Wallace
Deputy Director
Accountable Care Bradford

Walter O'Neill
Head of
Commissioning

Kath Helliwell
Head of
Commissioning

Collette Connolly
Head of
Commissioning

Louise Atherton
Head of
Commissioning

Polly Masson
Senior Commissioning
Manager

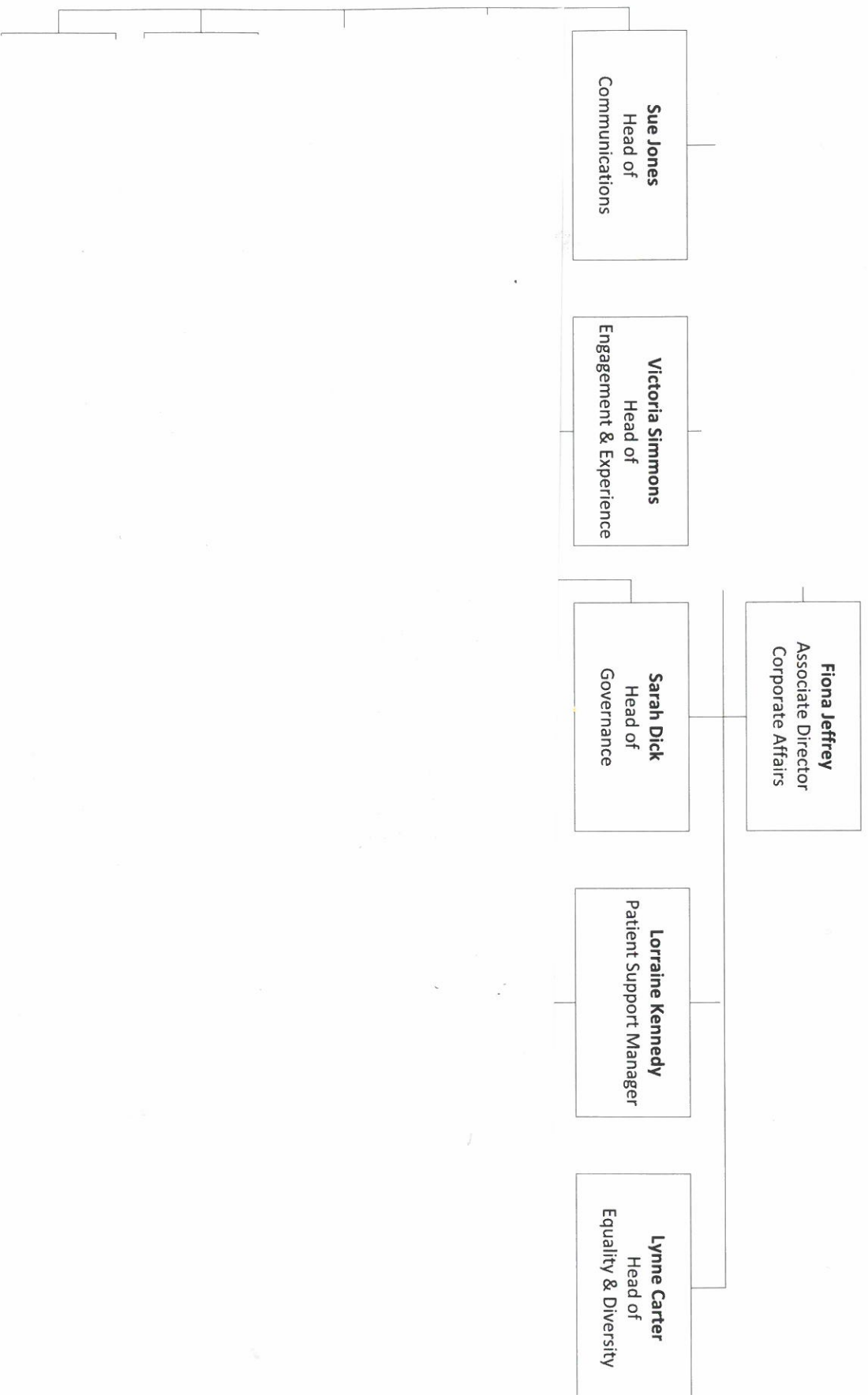
Ian Wallace
Head of
Commissioning

Liz Allen
Director
Accountable Care Bradford

Tracey Gaston
Head of
Medicines Optimisation

ACCOUNTABLE CARE BRADFORD

MEDICINES OPTIMISATION



CORPORATE AFFAIRS

Robert Maden
Chief Finance Officer

Helen Farmer
Deputy Director
Contracting

Chris Balson
Head of Acute Care
Contracting

Karen Stothers
Head of Primary Care
Contracting

CONTRACTING TEAM

Robert Maden
Chief Finance Officer

Diane Lawlor
Head of Finance
Corporate Reporting &
Financial Control

FINANCE TEAM

Robert Maden
Director of Finance

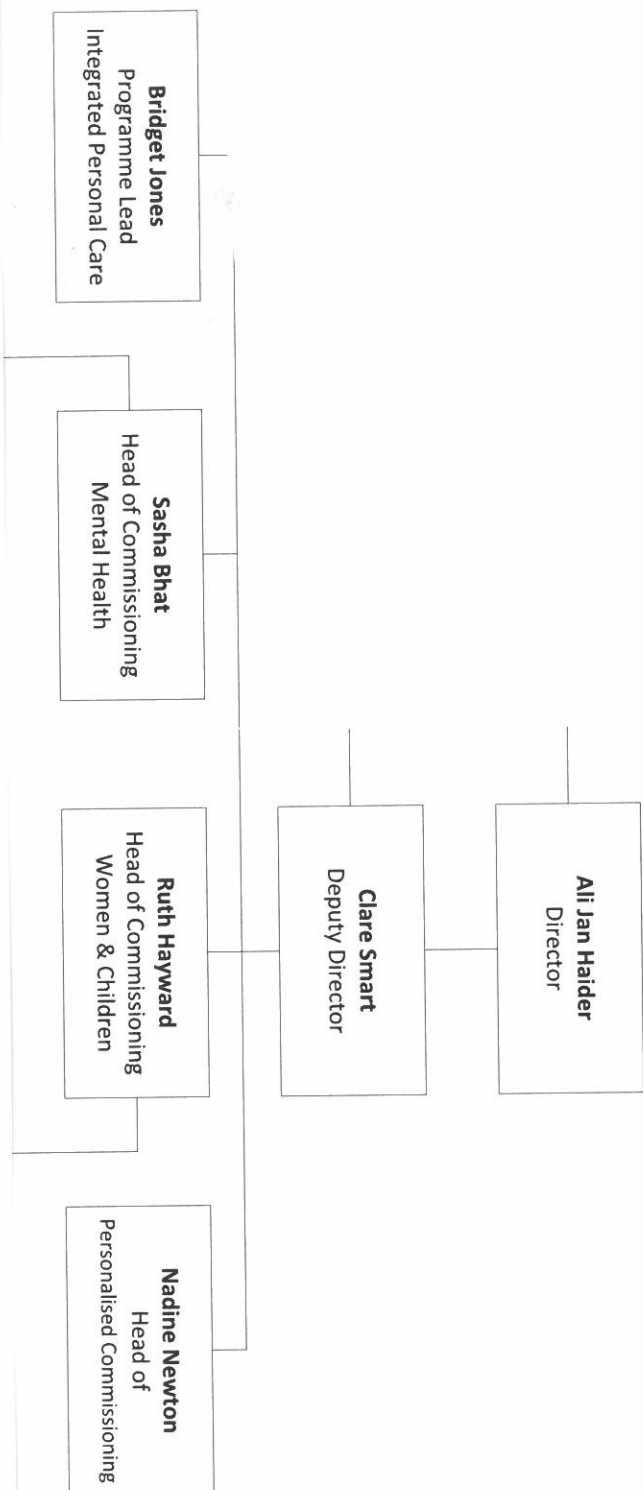
Kerry Weir
Deputy Director
Planning, Performance,
Assurance

PLANNING, PERFORMANCE AND ASSURANCE TEAM

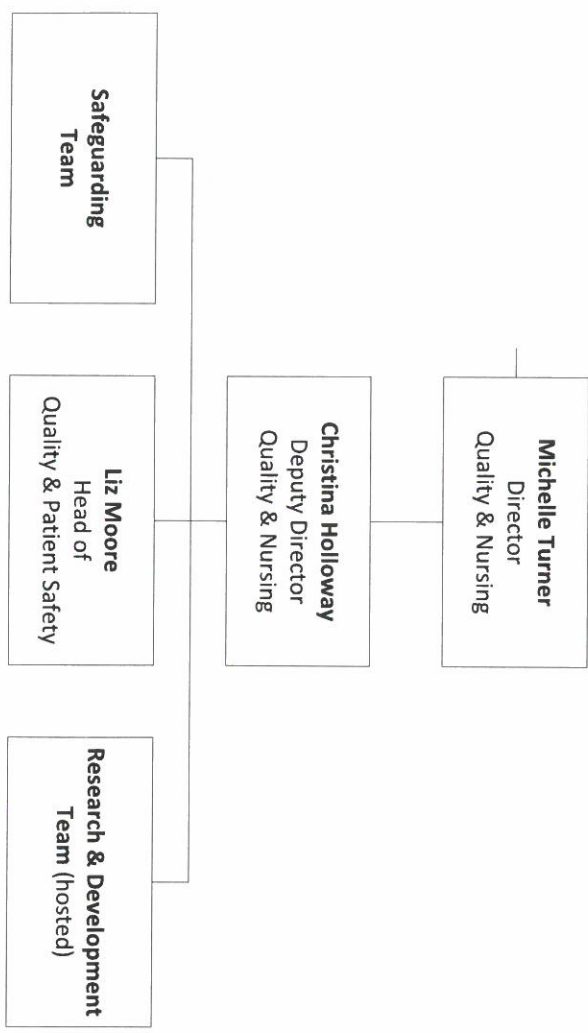
Robert Maden
Chief Finance Officer

Simon Wilson
Deputy Director
Digital and Technology

DIGITAL AND TECHNOLOGY TEAM



STRATEGIC PARTNERSHIPS TEAM

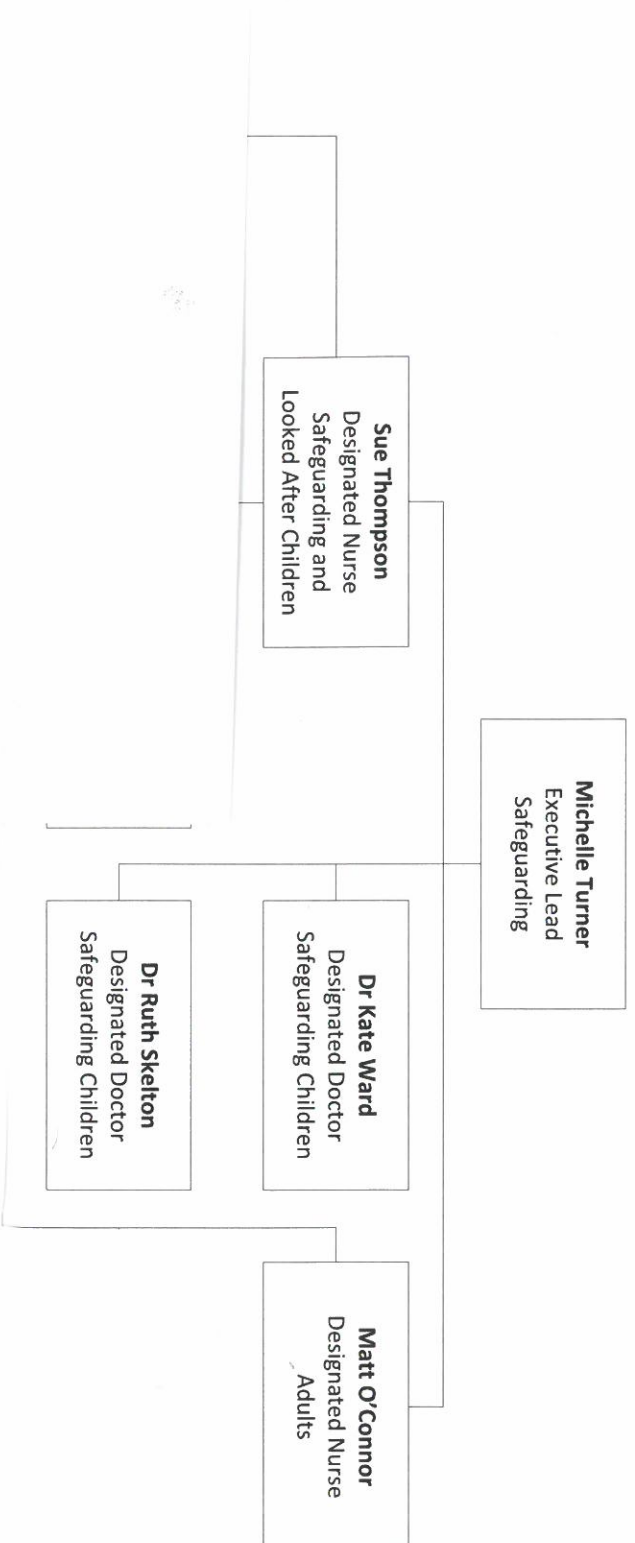


QUALITY TEAM

Paul Carder
Head of Research

Stella Johnson
Research Manager

RESEARCH AND DEVELOPMENT TEAM



SAFEGUARDING TEAM