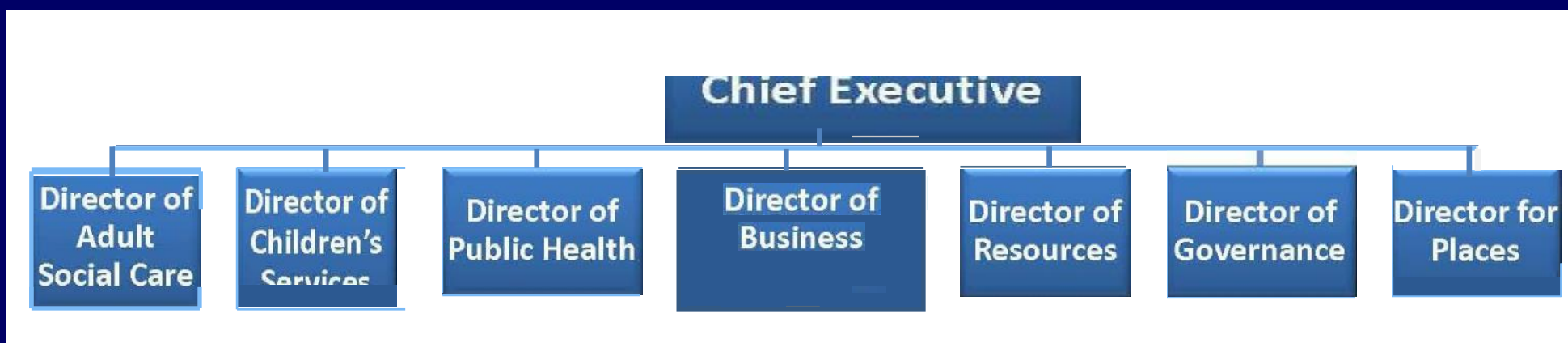




Senior Management Structure

The Corporate Leadership Team (CLT) is made up of the council's Directors who undertake the strategic decision making for the organisation.

Corporate Leadership Team



Chief Executive	Nick Page	E: npage@solihull.gov.uk	T: 0121 704 6018
Director for Adult Social Services	Ian James	E: ian.james@solihull.gov.uk	T: 0121 704 6317
Director for Children's Services	Sally Hodges	E: sally.hodges@solihull.gov.uk	T: 0121 704 6734
Director of Public Health	Dr Stephen Munday	E: stephen.munday@solihull.gov.uk	T: 0121 704 6187
Director of Business Transformation	Philip Mayhew	E: pmayhew@solihull.gov.uk	T: 0121 704 6652
Director of Resources	Paul Johnson	E: pjohnson@solihull.gov.uk	T: 0121 704 6194
Director of Governance	Philip Lloyd-Williams	E: plwilliams@solihull.gov.uk	T: 0121 704 6721
Director for Places	Anne Brereton	E: abrereton@solihull.gov.uk	T: 0121 704 6364

[BACK TO HOME PAGE](#)

People

There is no Director for People - the Director of Business Transformation, Philip Mayhew, has strategic oversight of the People Directorate. The directorate is split into three service areas; Adult Social Care, Children's Services and Public Health.

DIRECTOR LEVEL

Ian James

Director for Adult Social Care

E: ian.james@solihull.gov.uk

T: 0121 704 6317

Statutory role of Director of Adult Social Services
Assessing local needs and ensuring availability of an appropriate range and quality of care and support services
Leading an appropriate council and multi-agency response to safeguarding adults
Holding commissioned services to account for quality of care provision
Promoting a whole-council response to older people and disabled adults
Promoting the needs of adults across the wider Solihull community

Sally Hodges

Director for Children's Services

E: Sally.hodges@solihull.gov.uk

T: 0121 704 6734

Responsible for all of Children's Services
Children's Social Work Services
Learning and Achievement Services
Youth Offending Service
Youth Service
Chair of Children & Young People's Trust
Member of LSCB
Adoption Agency Decision maker
Chair of the Directorate Consultative Negotiation Committee (DCNC)

Dr Stephen Munday

Director of Public Health

E: Stephen.munday@solihull.gov.uk

T: 0121 704 6187

Statutory role of Director of Public Health
Public health advisor to the Council and the Health and Wellbeing Board
Assessing, monitoring and reporting on the health needs of Solihull
Development and commissioning of health improvement programmes
Supporting the commissioning of health care from the NHS – Solihull Clinical Commissioning Group board member
Health protection, including emergency planning and resilience
Leadership/management of public health
Public health workforce development and training

People

ADULT SOCIAL CARE - STRUCTURE

Director for Adult Social Care
Ian James

**Assistant Director
Adult Social Care**
Sue Dale

**Head of
Disability Services**
Clare Shannon

**Head of
Locality Services**
Jayne Hibbard

**Head of
Mental Health Services**
Jeremy Patton

**Community Equipment
and Wheelchair
Service Manager**
Mark Swingler

**Head of
Support Services**
Sue Munbodh

ADULT SOCIAL SERVICES - ADULTS

Sue Dale

Assistant Director, Adult Social Care

E: susan.dale@solihull.gov.uk **T:** 0121 704 6667

Older adults locality teams, physical disability team and crest service, learning disabilities team, and hospital social work. pediatric and adult occupational therapy services.

Member of the Multi Agency Safeguarding Board and Safeguarding Operational sub-group with a strategic safeguarding lead

Developing and managing around hospital discharges and Continuing Health Care (CHC).

New adult social care operating model under the umbrella of 'Putting Solihull People First!'

Finance and performance management for Adult Social Care services

All SMBC directly provided care services including:

Reablement Service

Residential care for people with Learning Disabilities

Day care for Older People

Day Care Services for People with Learning Disabilities

STEPS and work related Day Services

Day Care for people with physical disabilities

Community Equipment and Wheelchair Service

Mental Health Social Work Services for older people and adults of working age

People

ADULT SOCIAL SERVICES – PROVIDER SERVICES

Sue Dale

Assistant Director, Adult Social Care

E: susan.dale@solihull.gov.uk **T:** 0121 704 6667

Mark Swingler
Community Equipment and Wheelchair Service Manager

E: mark.swingler@solihull.gov.uk
T: 0121 329 0900

Community Equipment and Wheelchair Service (CEWS)

Sue Munbodh
Head of Support Services

E sue.munbodh@solihull.gov.uk
T: 0121 704 7165

Directly provided services
Reablement service

Day services for older people - Brookvale, Greenhill Way, Roundmead and Oaktrees Day services for people with learning disabilities - Park View, Bacons End and work related day services and STEPS Day Centre for people with physical disabilities - Green Acres

Clare Shannon
Head of Disability Services

E claire.shannon@solihull.gov.uk
T: 0121 709 7043

Learning disability and physical disability assessment and care management teams Working with commissioners and colleagues to develop and deliver strategies for working with adults with disabilities

Safeguarding, inc. large-scale investigations Care funding calculator project

Direct payments

Partnership working with above, e.g. Coventry and Warwickshire Partnership Trust

Jayne Hibbard
Head of Locality Services

E: jayne.hibbard@solihull.gov.uk
T: 0121 746 6152

Social work services for older people in the community and hospital settings Staffing budgets and the budgets for services for older people, e.g. placements/ direct payments and community services Strategies for working with older people Safeguarding, including large-scale investigations

Partnership working within all of the above e.g. Hoeft and Acute Hospitals

Jeremy Patton
Head of Mental Health Services

E: jeremy.patton@solihull.gov.uk
T: 0121 704 6767

Mental Health services for adults of working age and older people. Community Recovery Team Partnership work with Birmingham and Solihull Mental Health Trust Directly provided residential services for people with learning disabilities

People

CHILDREN'S SERVICES - STRUCTURE

Director for Children's Services
Sally Hodges

Assistant Director
Children, Young People
& Families
Adam Scott

Assistant Director
Learning & Achievement
Chris Palmer

Head of
Children in Care
Jane Wilton

Head of
Children
in Need (Interim)
Frank McSheffrey

Service Manager
Young People's
Services
Shelley Ward

Service Manager
Child Protection
& Review Unit
Simon Stubbs

Head of Service
Solihull Education
Improvement
Service
Phil Leivers

Early Years
& Childcare
Service
Kathy Slinn

Principal
Education
Psychologist
Mo Bham

Head of
Inclusion
& Access
Jeannette Essex

Head of
Business &
Performance
Steve Fenton

Service Manager
Connexions
Martin O'Connor

People

CHILDREN'S SERVICES – CHILDREN, YOUNG PEOPLE & FAMILIES

Adam Scott
Assistant Director, Children, Young People & Families

E: adam.scott@solihull.gov.uk **T:** 0121 704 6688

All of children's field
social work services
Safeguarding
Children in need
Children in care and
Leaving care services
Adoption

Fostering
Unaccompanied Asylum Seeking
Children service
Youth service
Youth Offending service
Education Welfare service
Child Protection and Review

Jane Wilton
Head of Children in Care

E: jwilton@solihull.gov.uk
T: 0121 788 4227

Social work services for
looked after children in
permanent care, care
leavers and agency adoption
and fostering services
Line management of
social work teams
Develop and deliver our
placement and other
strategies for looked after
children and care leavers
Staffing and placement
budgets in sector

Frank McSheffrey
**Head of Children in Need
(Interim)**

E: fmcsheff@solihull.gov.uk
T: 0121 704 8709

Children's social work
services to children in need of
support, care and protection
Out of hours emergency duty
team
Early support process and
specialist children's social
work service to children with
disabilities
Early support process within
CAF and LINC
Partnership working within all
of the above

Shelley Ward
**Service Manager - Young
People's Services**

E: shelleyward@solihull.gov.uk
T: 0121 704 8046

Youth Offending Service.
Statutory aim prevention and
reduction of youth offending
Youth Inclusion Scheme
prevention crime and
anti-social behaviour. Youth
Service (interim) Young
Peoples Substance Misuse
Service (interim)

Simon Stubbs
**Service Manager - Child
Protection & Review Unit**

E: ssubbs@solihull.gov.uk
T: 0121 788 4321

Child Protection Review Unit
independence and overview
and scrutiny of Child
Protection and LAC services
Ensuring Child Protection
Conferences and LAC reviews are
chaired in accordance with
legislation and procedures

CHILDREN'S SERVICES – LEARNING AND ACHIEVEMENT

Chris Palmer
Assistant Director, Learning and Achievement

E: chrispalmer@solihull.gov.uk **T:** 0121 704 8282 **M:** 07767 411 923

Relationships between education providers, including early years settings and the local authority

Relationships between DfE/Ofsted and the LA in relation to education

Lead Director for early support

Oversight and strategic management of a range of functions including:

- Education Improvement and pupil attainment
- Early Years and Childcare
- Special Educational Needs
- Specialist Inclusion Support Services
- Educational Psychology
- Careers guidance
- Education business services, including admissions and school place planning, school ICT, education data etc.
- Music Service

Corporate responsibilities, including chairing Prevent Partnership, Virtual Education Governing Body and Youth Offending Service Management Board, as well a linkage between education and regeneration, and between education and employment/economic development.

See next page for managers who report directly to the Assistant Director, Learning and Achievement

People

Direct reports to Assistant Director, Learning & Achievement

Phil Leivers
Head of Solihull Education Improvement Service

E: leivers@solihull.gov.uk

1: 0121 704 6630 **M:** 07768 127 604

Education Improvement Service
Develop an improvement strategy to provide high quality education in Solihull
Lead a risk assessment of schools to facilitate support, intervention and sharing of good practice
Support the development of integrated working in children's services

Kathy Slinn
Head of Early Years and Childcare Service

E: kslinn@solihull.gov.uk

1: 0121 704 8218 **M:** 07747 768 382

Early Years and Childcare Service
Develop an improvement strategy for early years settings in Solihull
Lead a risk assessment of early years settings in the maintained and private sector to facilitate support, intervention and sharing of good practice
development of integrated working in children's services
Training, support and guidance in relation to statutory safeguarding welfare requirements
Sufficiency and sustainability
Early education funding for 2,3 & 4 year olds

Mo Bham
Principal Education Psychologist

E: mobham@solihull.gov.uk

1: 0121 770 6030 **M:** 07747 768340

Educational Psychology Service - Psychological welfare, Emotional Wellbeing, Learning and Achievement, SEN & Disabilities.
Clinical lead for educational psychology for Solihull children and young people 0-19, educational settings and families.
Anti bullying strategy lead for council
Emergency advise and support for education and response to critical incidents
Parenting Strategy and Equality & Diversity directorate group
Health & Welfare, Research Governance and Preventing Violent Extremism Groups

Jeannette Essex
Head of Inclusion & Access

E: jessex@solihull.gov.uk

1: 0121 704 6039 **M:** 07766 990 932

Strategic lead for SEN and Disability including policy and planning
Commissioner of education provision for high needs children and young people age 0-19 and provision for pupils out of school including PRUS
Delivery of the statutory assessment and review service

Steve Fenton
Head of Business & Performance

E: sfenton@solihull.gov.uk

1: 0121 704 6692 **M:** 07586 276 066

Dedicated schools grant financial strategy and school funding
Education related grants
School place planning, inc. academy conversions
School admissions and transfers
Children missing education
Free school meals
ICT services to schools
School performance and data
Information systems (i.e. pupil database)
Intranet and Extranet for schools
Client / commissioner on behalf of schools / key corporate services for services traded to schools.

Martin O'Connor

Service Manager - Connexions

E: martin.oconnor@solihull.gov.uk

1: 0121 281 1841

Strategic development and delivery of Solihull Connexions service.
16-19 years NEETs young people.
Employment and Skills Working Group, for children and young people in care/care leavers
Member of the Youth Service Management Board, Virtual Education Board, and Disability Children's Project Board.
September Guarantee Offer
Raising of the Participation Age (RPA)

People

PUBLIC HEALTH

Director of Public Health
Dr Stephen Munday

**Consultant in
Public Health**
**Jacquie
Ashdown**

**Consultant in
Public Health**
Ian Mather

**Senior
Public Health
Specialist /
Senior Manager**
Sangeeta Leahy

**Cardiovascular
Disease &
Cancer
Prevention
Programme
Lead**
Manisha Sharma

**Drug & Alcohol
Action Manager**
Sara Rooney

**Senior
Public Health
Specialist /
Senior Manager**
Alison Trout

**Head of
CSW Resilience**
Michael Enderby

**Public Health
Business
Manager**
Michelle Hughes

People

Direct reports to Director of Public Health

Vacant Consultant in Public Health

E:
T:

Ian Mather Consultant in Public Health

E: ian.mather3@nhs.net
T: 0121 704 6917

- Improving the health of children, young people and families
- Leading development and implementation of public health policies, plans and programmes
- Public Health leadership and support **to council's commissioning function**
- Public Health leadership and advice to Solihull Health CC
- Supporting Director of Public Health and deputising as required
- Training Public Health specialist registrars and specialist trainees

Sangeeta Leahy Senior Public Health Specialist / Senior Manager

E: sangeeta.leahy@nhs.net
T: 0121 704 6797

Health needs of vulnerable, disadvantaged families and communities
Interventions to tackle the wider determinants of health
Co-ordination of Health and Wellbeing Board and delivery of the Health and Wellbeing Strategy
Whole system approach to seasonal excess deaths

Manisha Sharma Cardiovascular Disease & Cancer Prevention Programme Lead

E: manisha.sharma@nhs.net
T: 0121 704 6371

NHS Health Checks programme
Cancer Prevention local strategy
Cancer and CVD primary and secondary prevention

Sara Rooney Drug and Alcohol Action Manager

E: srooney@solihull.gov.uk
T: 0121 704 6713

- Substance Misuse (drug and alcohol) Strategy
- Commissioner – **young people's** drug and alcohol services
- Community safety
Alcohol licensing public health responsible authority role

Alison Trout Senior Public Health Specialist / Senior Manager

E: alison.trout@nhs.net
T: 0121 704 6952

- Lifestyles Services commissioning (physical activity, weight management, stop smoking, health trainers, You+)
Tobacco control
- MECC lead
Community engagement (Connecting Communities)
- Communications, social marketing and social media

Michael Enderby Head of CSW Resilience

E: menderby@solihull.gov.uk
T: Solihull: 0121 704 8179
Coventry: 0247 683 1878
Warks: 0192 641 2589

Emergency planning (internal/external)
24/7 incident response for councils
Business continuity (including BC promotion to business)
Training and exercises
Resilience risk and threat assessments
Shared service partnership with Coventry and Warwickshire

Michelle Hughes Public Health Business Manager

E: michelle.hughes4@nhs.net
T: 0121 704 6261

Financial management
Performance management
Contracting & commissioning support
Operational support / governance

[BACK TO HOME PAGE](#)

Business Transformation

The purpose of the Business Transformation Directorate is to support and enable the Council to improve outcomes for the people of Solihull through commissioning in general and service re-design in particular.

The Directorate consists of three complementary groups

1. Integrated Commissioning and Procurement (including adults/children/family commissioning and procurement).
2. Transformation Group (including Lean, Communications, Organisational Development and Workforce Development).
3. Commissioning Support (including, Policy and Performance, Equalities, Partnership and 3rd Sector Support).

Key plans and performance measures

1. Commissioning Plan - currently being drafted for the agreement of Director of Adult **Social Care/Director of Children's Services/Director of Public Health will set out the main** activities for the commissioning function and identify commissioning support resources. It will need to be consistent with the children and adult PDMs, which require considerable support from the Directorate.
2. Lean Policy Deployment Matrix - this will be the driving force for the transformation group.
3. Business fundamentals will be monitored through covalent.

Business Transformation

Director of Business Transformation

Phil Mayhew

E: pmayhew@solihull.gov.uk **T:** 0121 704 6652

**Assistant Director
Performance, Planning
& Commissioning**

Karen Murphy

**Head of
Strategic
Commissioning
- Children &
Families
Ben Lewing**

**Head of
Strategic
Commissioning
- Older People
Simon Barton**

**Head of
Strategic
Commissioning
- Mental Health
Julia Phillips**

**Head of
Strategic
Commissioning
- Disability
Catherine Nolan**

**Head of
Corporate
Performance,
Policy &
Information
Ian Ash**

**Head of
Organisational
Development
Vacant**

**Head of Service
Equality &
Diversity
Karen Grant**

**Head of
Community
& Voluntary
Relations
Faisal Hussain**

**Head of
Partnership
Commissioning
Melanie Lockey**

**Head of
Communications
**Deborah
Martin-Williams****

**Head of
Business
Transformation
Kim Silcock**

**Head of
Procurement
Liz Welton**

Business Transformation

Direct reports to Director of Business Transformation

Karen Murphy

Assistant Director, Performance, Planning and Commissioning

E: karenmurphy@solihull.gov.uk

T: 0121 704 6919

- **Commissioning** is the term used to describe the process by which we analyse the need for services to support children, families and vulnerable adults in the borough, and then design, develop and secure the provision of those services from a range of providers.
- Supports Children's Services, Adult Social Care and Public Health by working with community, voluntary and independent providers to deliver the services that local people have indicated that they need and value. Recent examples of commissioned services include: children's centres, advocacy services, home care support, residential and nursing care and parenting support.
- Commissioning work is done in partnership with others: with those who use services, with carers and families, with providers, with other local organisations such as NHS bodies, police, probation service and community groups.
- The Council also hosts some joint commissioning on behalf of the NHS. The Clinical Commissioning Group has an agreement with us to commission health services for local people with learning disabilities, for those people with mental health needs, and for carers. By doing this, we are able to look at the whole person's needs and bring services together in a co-ordinated way to provide better support.

Ian Ash

Head of Performance, Policy and Information

E: lash@solihull.gov.uk

T: 0121 704 6992

Corporate Information team

- data management and analysis support for Adults & Children's Social Services
producing management and performance information
Completing statistical returns including Ofsted and Care Quality Commission

Solihull Observatory

Analytical support across the council and Solihull Partnership including commissioning analysis.
Census data analysis, supporting the Joint Strategic Needs Analysis and other needs assessments
Ward profiles

Corporate Information Governance team

- Data Protection and Freedom of Information Acts and associated Regulations such as the Environmental Impact Regulations.
- Training and policy development in areas such as Information Security and Records Management
Manages the corporate offsite records storage contract.

Corporate Performance team

- Supports Corporate Leadership Team and elected members in high level strategic performance management, including Members' scorecard reporting processes.
- Project lead for the use of the corporate wide performance tool Covalent.
- Leads on external corporate wide inspections or peer challenges under the new sector led improvement arrangements.
- Leads on Policy deployment prioritisation and performance management approach as part of the organisations commitment to adopting a Lean thinking approach.

Vacant

Head of Organisational Development

Email: sblunt@solihull.gov.uk

Tel: 0121 704 6539

- Building leadership capability and capacity
- Supporting the organisation to develop the skills, knowledge and experience to fulfil its ambitions
- Employee engagement
- Performance management and talent development.
Lean awareness, Lean skills development and application
Diagnostic activity including the corporate employee survey

Karen Grant

Head of Service, Equality & Diversity

Email: kgrant@solihull.gov.uk

Tel: 0121 704 6119

Support teams to meet legal duties and policy commitments in relation to equality and diversity
Supports managers in analysing the equality implications of their services, including Fair Treatment Assessments
Provides confidential advice to individual employees on equality related concerns

continued ...

Business Transformation

Direct reports to Director of Business Transformation

Faisal Hussain

**Head of Community &
Voluntary Relations**

Email: fhussain@solihull.gov.uk

Tel: 0121 704 8541

- Supports development of Voluntary & Community Sector (VCS) through community capacity building.
- Improving partnership working, relations and trust between public bodies and the VCS through the Compact (Codes of Practice)
- Community Initiatives Fund (CIF) - Lead officer
- Development of Community Assets Transfer Policy (CAT); maximising council assets for benefit of wider communities of Solihull through New Ways of Working (NWOW.)
- Development and commissioning of local Healthwatch organisation for Solihull to replace Local Involvement Networks (LINKs)
- Commissioning of an Independent Complaints Advocacy Service (ICAS) for individuals making a complaint about NHS services.
- Council's Sharing Our Skills: Employer Supported Volunteering Scheme

Melanie Lockey

**Head of Partnership
Commissioning**

Email: mlockey@solihull.gov.uk

Tel: 0121 704 8403

- Lead on multi-agency commissioning against a set of priority outcomes agreed by strategic partners across Solihull.
- Establish and review partnership governance and frameworks that support local groups and organisations to work together in a co-ordinated way.
- Promote integrated service delivery, eg. Families First Approach (nationally known as "troubled families") which provides a multi-agency response to families facing complex issues.
- Promote involved communities including: Partnership Forums; capacity building through resident led partnerships (e.g. SWANN and CAFÉ); and creating professional networks to improve the quality and consistency of community involvement.
- Provide performance management through the Priority Outcomes Forum & a Narrowing the Gap scorecard.

**Deborah Martin-Williams Head
of Communications**

Email:

dmartinwilliams@solihull.gov.uk

Tel: 0121 704 6772

- Protect the reputation of the council through a proactive relationship with the media
- Respond to enquiries and communicate news and important information to local residents and organisations
- Organise and market community campaigns
- Produce and approve all internal and external publications
- Maintain social media
- Provide support during emergencies and major public events

Kim Silcock

**Head of Business
Transformation**

Email: ksilcock@solihull.gov.uk

Tel: 0121 704 8615

- Supports the business to facilitate change by adopting and utilising lean tools and techniques, embed a culture of efficiency and continuous Improvement to ensure that the business is customer focused.

Liz Welton

Head of Procurement

E: lizwelton@solihull.gov.uk

T: 0121 704 6088

- Professional procurement support and guidance for all of the council's expenditure with third parties
- The team is part of the sub regional shared procurement service with Coventry and Warwickshire.

[BACK TO HOME PAGE](#)

Resources

Director of Resources

Paul Johnson

E: pjohnson@solihull.gov.uk **T:** 0121 704 6194

The Council's nominated Section 151 Officer, has statutory responsibility for ensuring the financial health and probity of the local authority
Leads the council's strategic approach to financial planning and management
Council tax and business rates collection and benefits administration
Facilities and Asset Management
Customer Services
Strategic Land projects
Information and Communications Technology
Human Resources

**Head of
Customer
Services**
Emma Mayhew

**Head of
Financial
Operations**
Sam Gilbert

**Head of Income
and Awards**
Alison McGrory

**Head of
Corporate
Property
Services**
Paul Evans

**Head of
Strategic Land
and Property**
Mike Swallow

**Head of Human
Resources**
Adrian Cattell

Head of ICT
Steve Halliday

Direct reports to Director of Resources

Emma Mayhew Head of Customer Services

E: emayhew@solihull.gov.uk
T: 0121 704 8667

- Customers
- Solihull Connect, Customer Services team including walk-in services, contact centre and the corporate website
- Registration Services; births, deaths, marriages, civil partnerships and citizenship ceremonies
- Corporate complaints
- Corporate cash office
- Blue badge assessment and administration
- First point of contact for Adult Social Care Services customer access
- Oracle Customer Relationship Management (CRM) support and development Call guide support and development
- Customer service related training
- Customer services provided on behalf of Solihull Community Housing and North Solihull Partnership

Samantha Gilbert Head of Financial Operations

E: sgilbert@solihull.gov.uk
T: 0121 704 6278

Financial Operations
Deputy Section 151 Officer
Accountancy and Financial Management
Treasury Management
Insurance
Creditors
Payments

Mike Swallow Head of Strategic Land and Property

E: mswallow@solihull.gov.uk
T: 0121 704 6155

Strategic management and policy for the council's land and property assets
Major land and property developments and disposals
Valuation service for the council and Solihull Community Housing
Asset valuations for the Council's and Solihull Community Housing's accounting statements
Rent reviews and lease renewals for council properties

Alison McGrory Head of Income and Awards

E: amcgrory@solihull.gov.uk
T: 0121 704 8110

Income and Awards:
Council tax
Business rates
Benefits
Sundry Income
Lead for welfare reform

Adrian Cattell Head of Human Resources

E: acattell@solihull.gov.uk
T: 0121 704 6038

Lead professional advisor on all HR issues, employment legislation and employee relations.
Lead advisor on change management processes to support organisational change and business requirements.
Safer recruitment of all council staff and volunteers making sure that systems comply with legislative and audit requirements.
Oracle HR system including the provision of payroll

Paul Evans Head of Corporate Property Services

E: pevans@solihull.gov.uk
T: 0121 704 6494

Corporate and schools facilities and asset management
Corporate accommodation strategy and asset management plan.
Shared sub-regional facilities and asset management services.

Steve Halliday Head of ICT

E: shalliday@solihull.gov.uk
T: 0121 704 6196

- Information and Communications Technology (ICT) leadership.
- Strategic planning for ICT services—alignment of ICT strategy with council strategy
- Development of plans (and delivery of outcomes) that develop the council's, regional and national objectives.
- Ensuring implementation of ICT change programmes, transformation and projects
- Ensuring operational stability of existing ICT systems
- Management of ICT staff and associated budget planning

BACK TO HOME PAGE

Governance

Director of Governance (Monitoring Officer)

Philip Lloyd-Williams

E: plwilliams@solihull.gov.uk **T:** 0121-704 6721 **M:** 07785 720 372

Solicitor to the Council; advises Council and Cabinet and all members on decision making, ethics and conduct in confidence.
Leads the directorate

Chief Executive

Philip Mayhew

Head of Audit & Governance Services

Steve Sparkes

Head of Democratic Services (Deputy Monitoring Officer)

Deborah Merry

Legal Services

Team Leader Social Care and Education

Alison Frost

Team Leader Litigation

Santokh Gill

Direct reports to Director of Governance (Monitoring Officer)

Steve Sparkes
Head of Audit & Governance Services

E: ssparkes@solihull.gov.uk

T: 0121 704 6282

M: 07900 652 199

Internal Audit function including, counter-fraud -internal and external; Whistleblowing Policy and investigations as appointed by the Council

Delivers trading service to other organisations in borough, including academies, colleges and parish councils.

Governance Services – providing advice, support and guidance on corporate governance, risk and health and safety management, to ensure compliance with relevant legislative requirements and governance frameworks.

Deborah Merry
Head of Democratic Services (Deputy Monitoring Officer)

E: dmerry@solihull.gov.uk

T: 0121 704 6022

Support for councillors including council, cabinet, scrutiny and committee meetings, members allowances, councillor training and development

Elections and electoral registration

Community Governance and Boundary reviews

Mayor's office

School admission and exclusion appeals

Ombudsman case co-ordination

Legal services

Provides comprehensive legal service to the council
Advice to officers and members on areas including social care (children's and adult services), education, litigation, housing, planning, property, procurement and contracts

Alison Frost
Team Leader,
Social Care and Education

E: afrost@solihull.gov.uk

T: 0121 704 6061

Santokh Gill
Team Leader,
Litigation

E: sagill@solihull.gov.uk

T: 0121-704 6006

[BACK TO HOME PAGE](#)

Director for Places

Anne Brereton

E: abrereton@solihull.gov.uk **T:** 0121 704 6364

Leadership of the Places Directorate

Commissioning and transformation of services to deliver the council's priorities,
management of resources and performance of the Places Directorate

Partnerships and relationship management

Place shaping

North Solihull Regeneration

Local Enterprise Partnership (LEP)

Growth and development

**Assistant Director
Highways, Neighbourhoods
& Environment Services**

Jim Harte

E: jharte@solihull.gov.uk

T: 0121 704 6453

**Assistant Director
Planning, Design &
Development**

Vacant

E:

T:

**Head of
Environmental
Services**
Alan Brown

**Head of
Highway
Services**
Ashley Prior

**Head of
Libraries &
Information
Services**
Tracy Cox

**Head of
Neighbourhood
Services**
Caroline Naven

**Head of
Development &
Regulatory
Management
Services**
Vacant

**Head of Economic
Development &
Regeneration
Services**
Vacant

**Head of Policy
& Spatial
Planning**
Ken Harrison

Direct report to Director for Places:

Direct reports to Assistant Director, Highways, Neighbourhoods & Environment Services

Jim Harte
Assistant Director, Highways,
Neighbourhoods & Environment
Services

E: jharte@solihull.gov.uk

T: 0121 704 6453

- Deputy to Director for Places
- Strategic lead on major contracts and commissioning
- Tactical resilience lead for all council services
- Oversight of operational and community services for:
 - environment
 - highways
 - neighbourhoods
 - libraries and information
 - public protection
- Directorate lead for:
 - budget efficiency planning
 - ICT development
 - service transformation
 - communities and localism
 - major infrastructure delivery

Alan Brown
Head of Environmental
Services

E: albrow@solihull.gov.uk

T: 0121 704 8334

- Waste and recycling
- Street Care services
- Cemeteries and Crematoria
- Parks and green space development
- Strategic Environment Contract (SEC)
- Environmental Crime
- Pest Control

Ashley Prior
Head of Highway Services

E: ashley.prior@solihull.gov.uk

T: 0121 704 8558

- Strategic Highway Contract (SHC)
- Road safety and sustainable transport
- Traffic management
- Civil and structural engineering design
- Car parking
- Highway, lighting & drainage maintenance
- Schools Services

Caroline Naven
Head of Neighbourhood
Services

E: cnaven@solihull.gov.uk

T: 0121 704 8753

- Neighbourhood co-ordinators
- Neighbourhood rangers
- Neighbourhood Activity Programme
- Leisure service
- Arts Complex
- Town Centre management and Business Improvement District (BID)
- Solihull Active Team
- Community Safety

Direct report to Director for Places:

Direct reports to Assistant Director, Highways, Neighbourhoods & Environment Services

Vacant
Assistant Director
Planning, Design &
Development

E:
T:

Vacant
Head of Design & Development
Management Services

E:
T:

- Development control
- Historic environment
- Building control
- Landscape
- Biodiversity
- Urban design
- Licencing
- Trading Standards
- Compliance
- Food Safety
- Development and Regulatory Services

Vacant
Head of Economic
Development and
Regeneration Services

E:
T:

- Economic development
- Business and enterprise support
- Lifelong
- External
- Regeneration
- Employability
- Skills

Tracey Cox
Head of Libraries &
Information Services

E: tc Cox@solihull.gov.uk
T: 0121 704 6945

- Management of the library network
- Reading and literacy services
- Community based learningservices
- Information and virtual Library
- Heritage andal archive services
- Digital inclusion

Ken Harrison
Head of Policy & Spatial
Planning

E: ken.harrison@solihull.gov.uk
T: 0121 704 8320

- Housing policy and strategy
- Transport policy and planning
- Spatial Planning
- Sustainability

BACK TO HOME PAGE