

# Trust Board



**Mark Lam**  
Chair



**Paul Calaminus**  
Chief Executive Officer

## Non-Executive Directors



**Aamir Ahmad**



**Ken Batty**  
Senior Independent  
Director



**Richard Carr**



**Anit Chandarana**



**Prof Sir Sam  
Everington KBE**



**Prof Dame Donna  
Kinnair DBE**



**Eileen Taylor**  
Vice Chair



**Deborah Wheeler**

## Executive Directors



**Tanya Carter**  
Chief People Officer



**Steven Course**  
Chief Finance Officer &  
Deputy CEO



**Richard Fradgley**  
Director of Integrated Care



**Dr Paul Gilluley**  
Chief Medical Officer



**Philippa Graves**  
Chief Digital Officer



**Edwin Ndlovu**  
Chief Operating Officer



**Dr Amar Shah**  
Chief Quality Officer

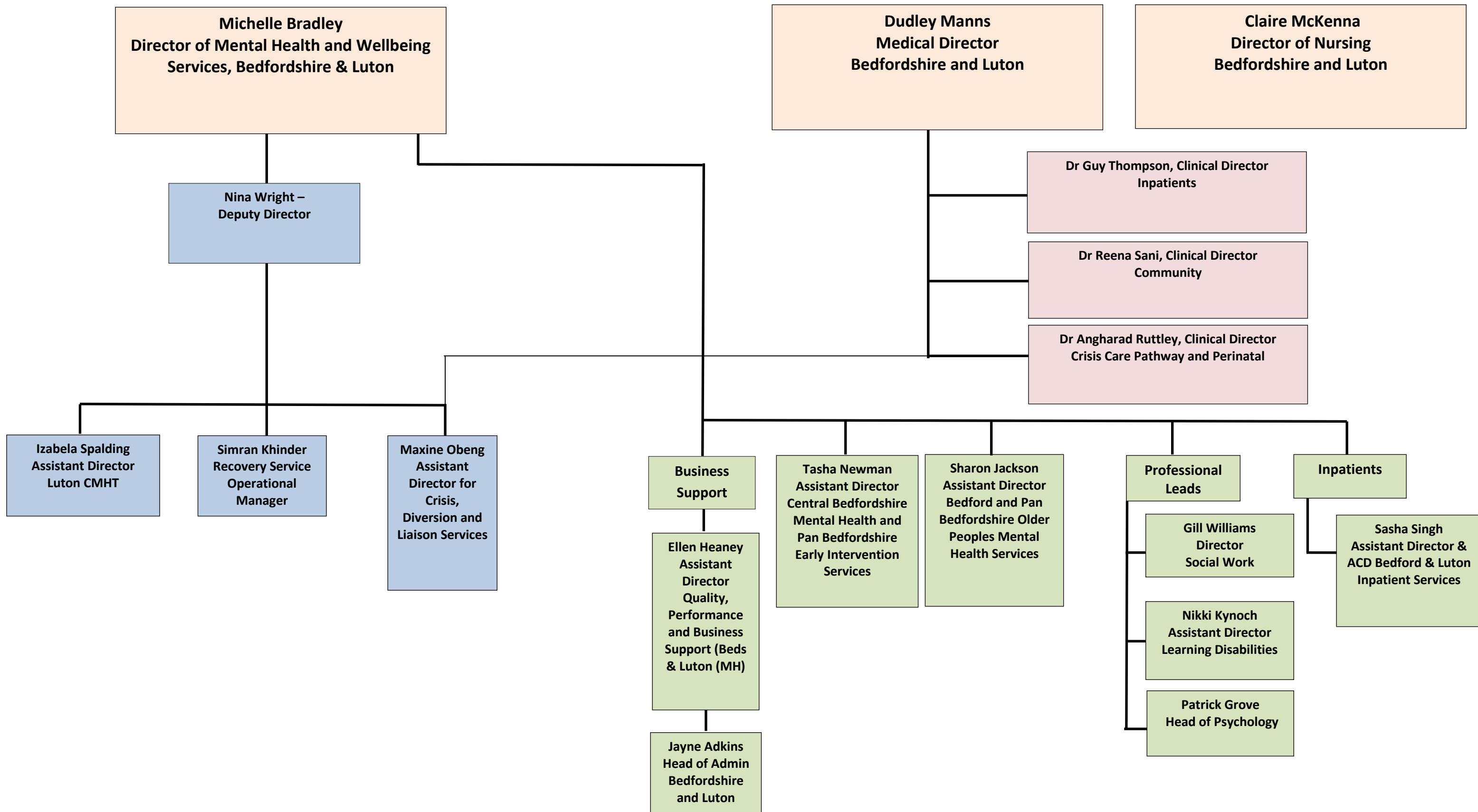


**Lorraine Sunduza**  
Chief Nurse & Deputy CEO



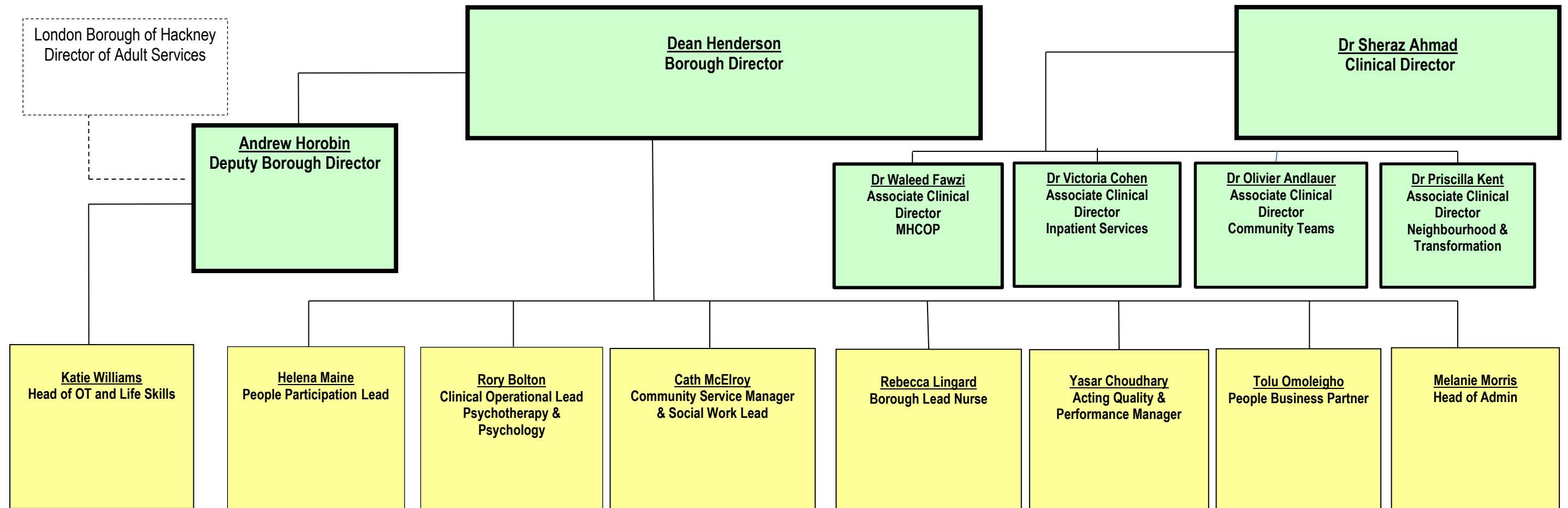
**Dr Mohit Venkataram**  
Executive Director of Commercial  
Development

## Bedfordshire and Luton Senior Management Organisational Chart

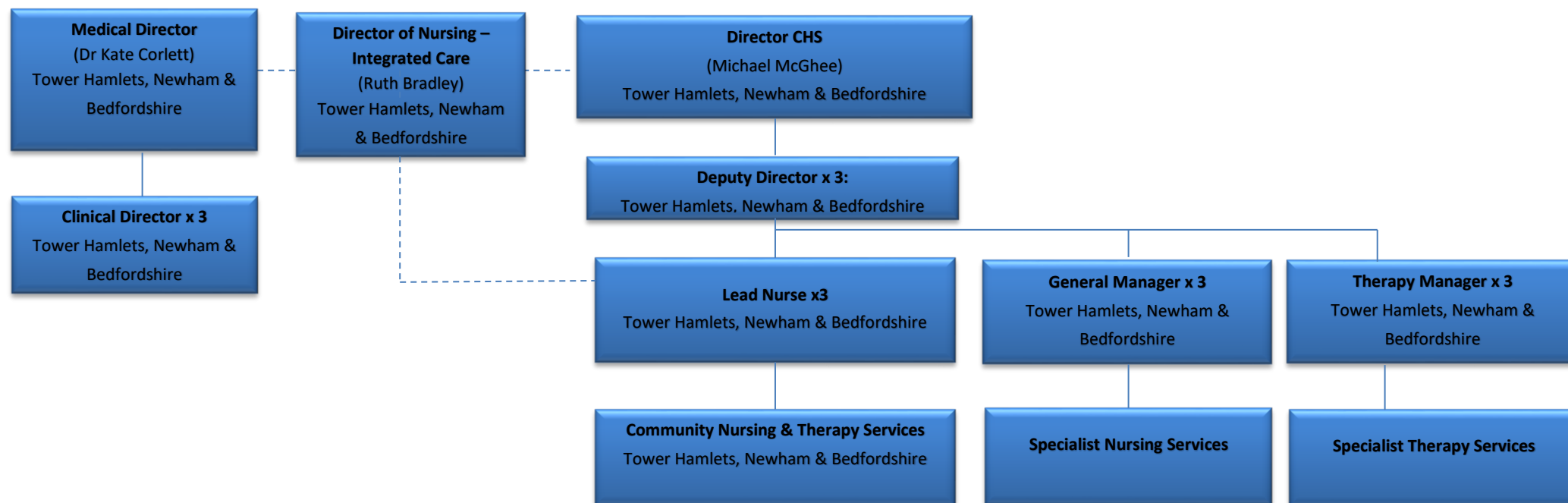


# City & Hackney Directorate Structure

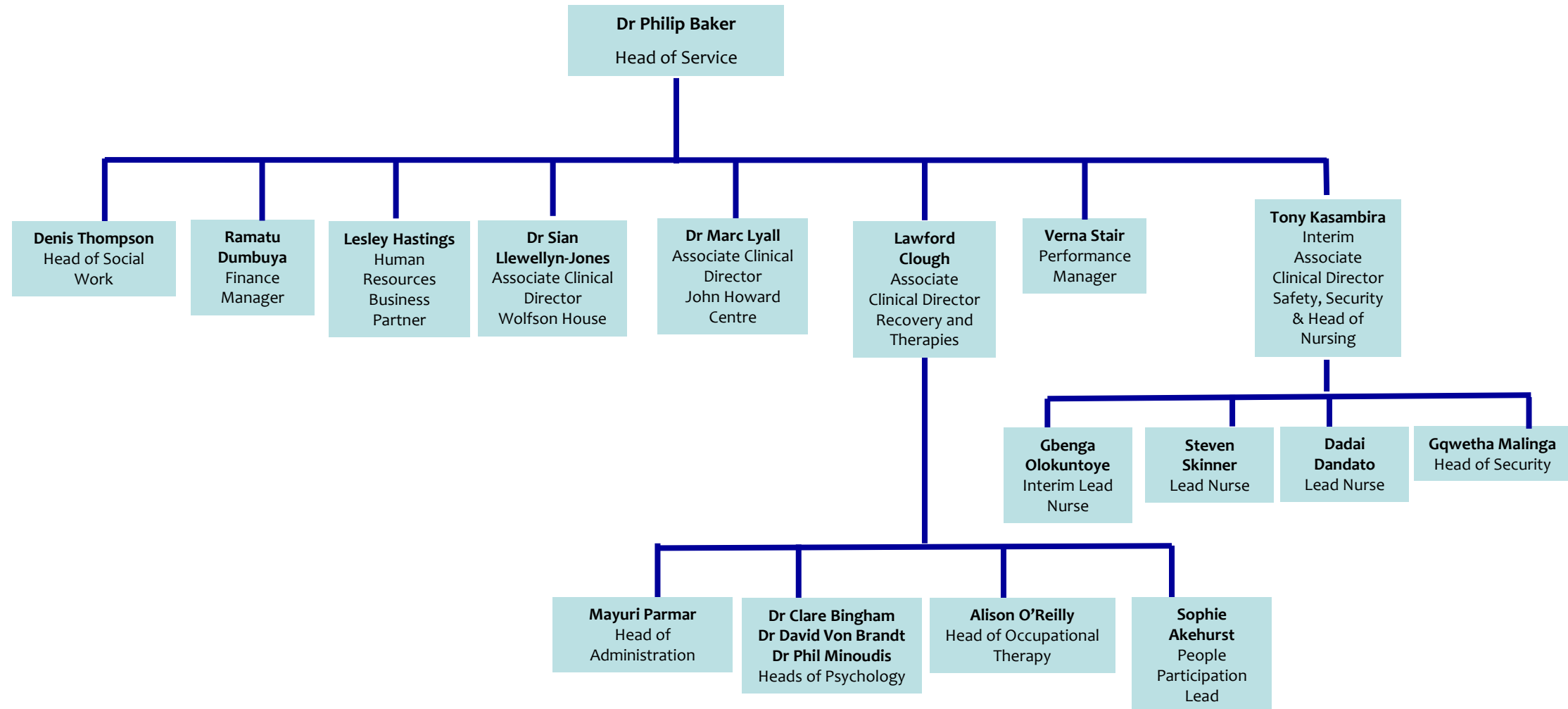
East London **NHS**  
NHS Foundation Trust



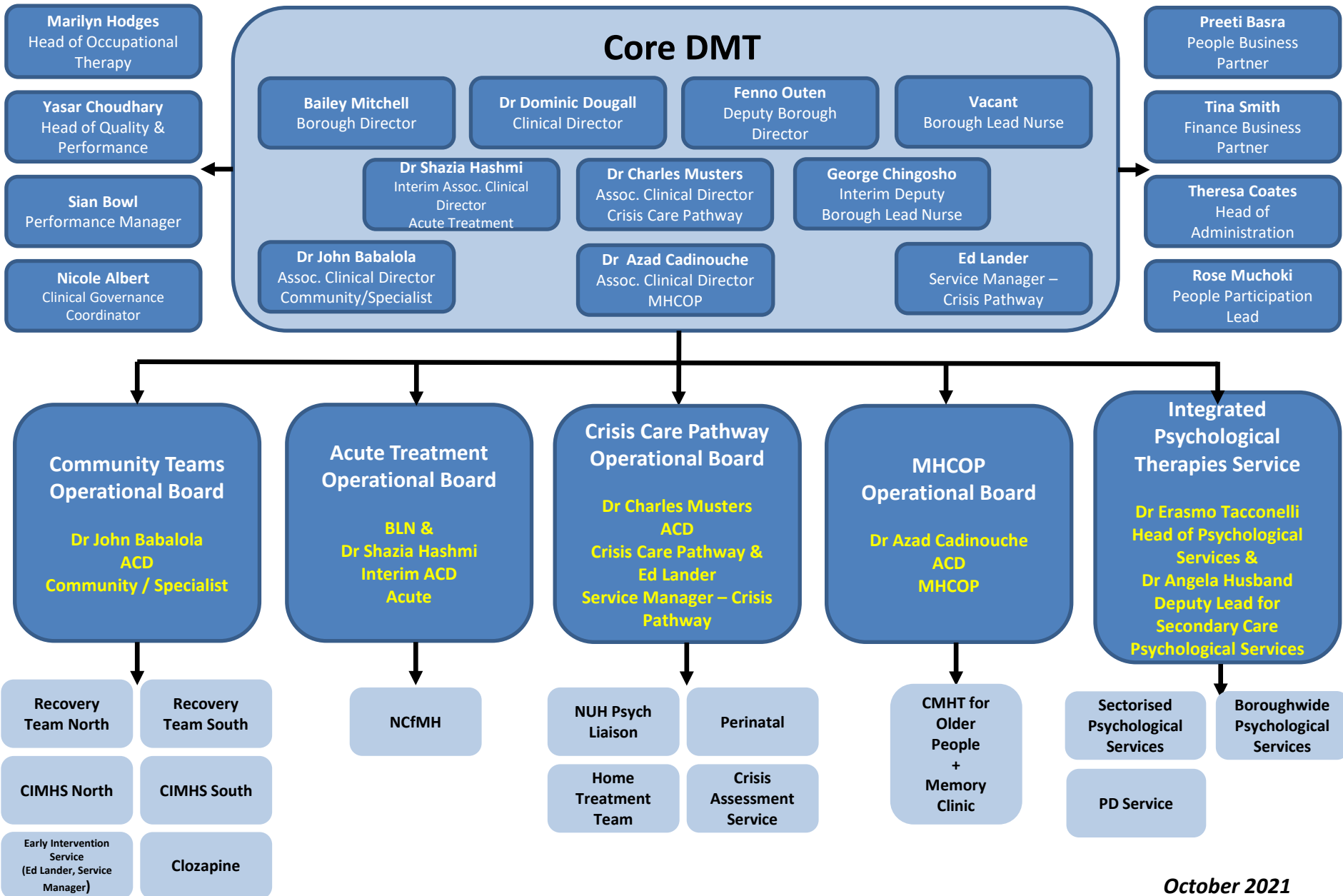
## Community Health Services Senior Management Structure



# Forensic Services Directorate



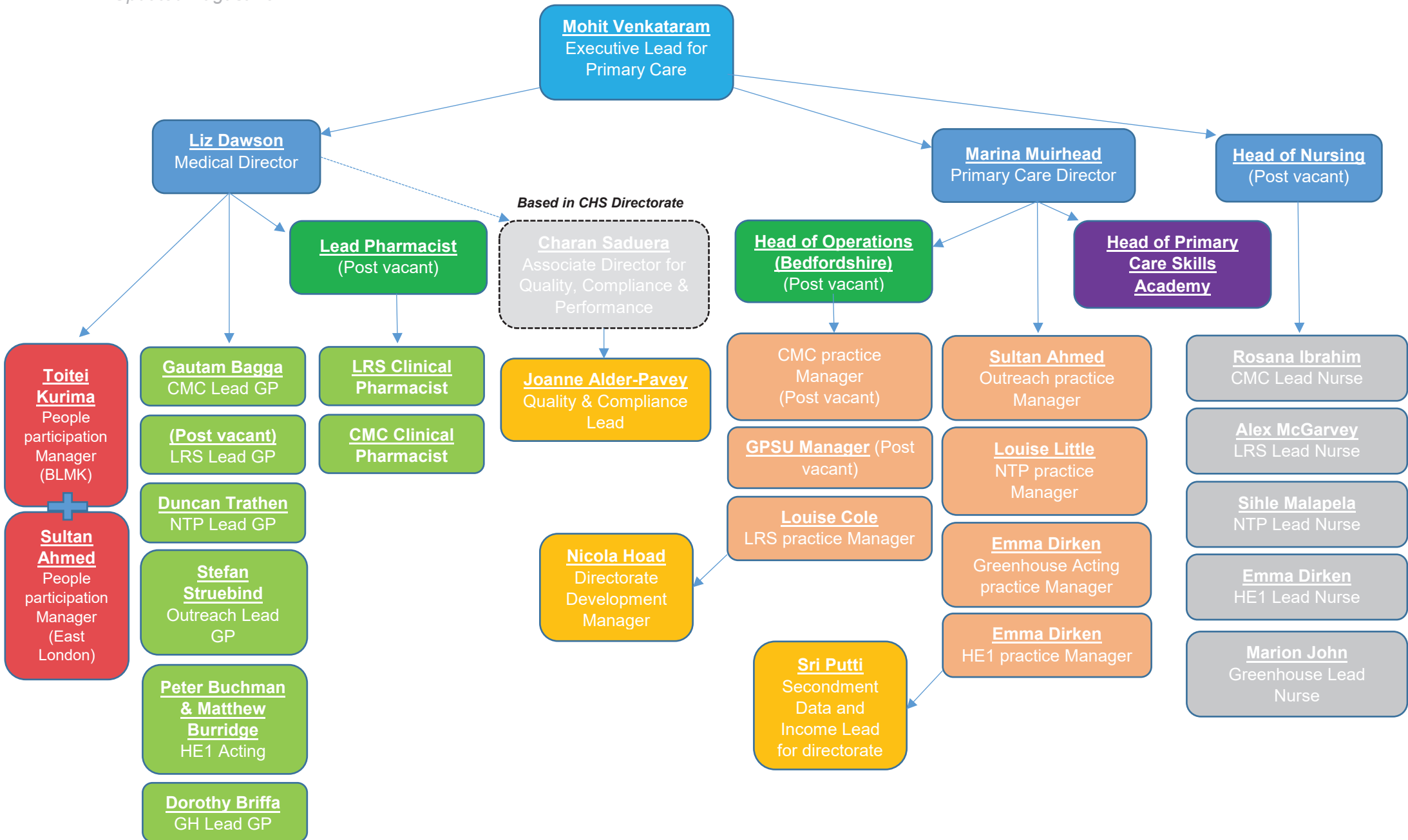
# NEWHAM: DIRECTORATE MANAGEMENT TEAM STRUCTURE



**October 2021**

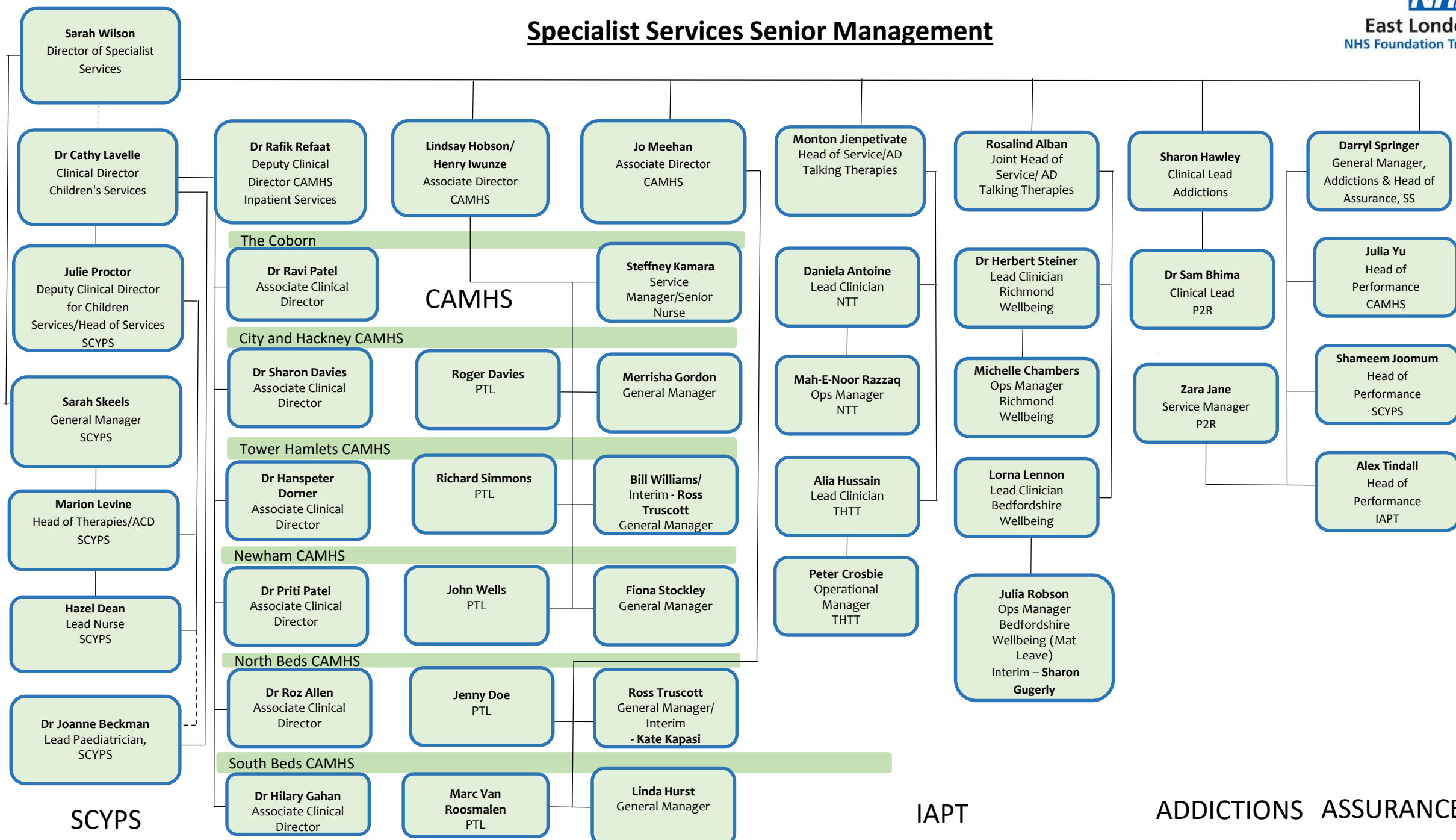
**Note:** The Borough Director chairs the DMT, the Clinical Director has overarching responsibility for the Governance structure and with the Borough Director for sign off of incident reports. The Borough Director has a statutory line of accountability to the Local Authority in relation to AMHP and other statutory responsibilities that cannot be wholly delegated to the Trust. The Principle Pharmacist and the named professional for Safeguarding Children attends the DMT and are corporately managed.

**Primary Care Directorate**  
*Updated August 2021*





# Specialist Services Senior Management



SCYPS

IAPT

ADDICTIONS ASSURANCE



