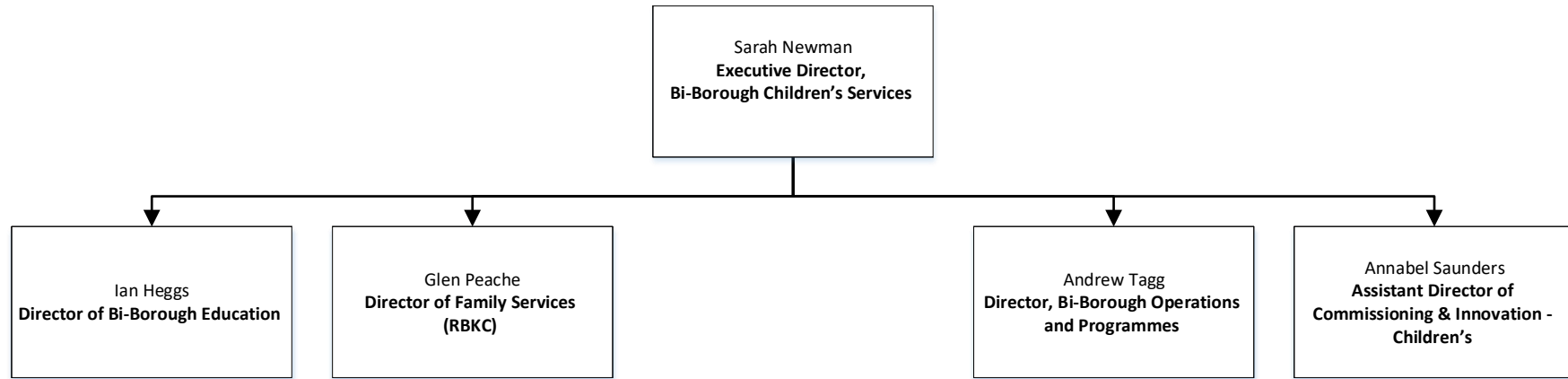




THE ROYAL BOROUGH OF
KENSINGTON
AND CHELSEA



Andrew Tagg
Director, Bi-Borough Operations
and Programmes

Head of Business Intelligence and
Strategy

Head of Transformation and
Innovation

Head of Operations and
Programmes

Step Up Programme Manager

Strategy Policy &
Partnership Manager

Information Governance/Caldicott
Support Manager

Practice Development Manager

Practice Development Manager
Social Work programme

West London Project Officer

Senior Business Intelligence
Manager

Strategic Transformation Lead

Strategic Transformation Lead

Strategic Transformation Lead

Strategic Transformation Lead

Portfolio Officer

Strategic Transformation Lead

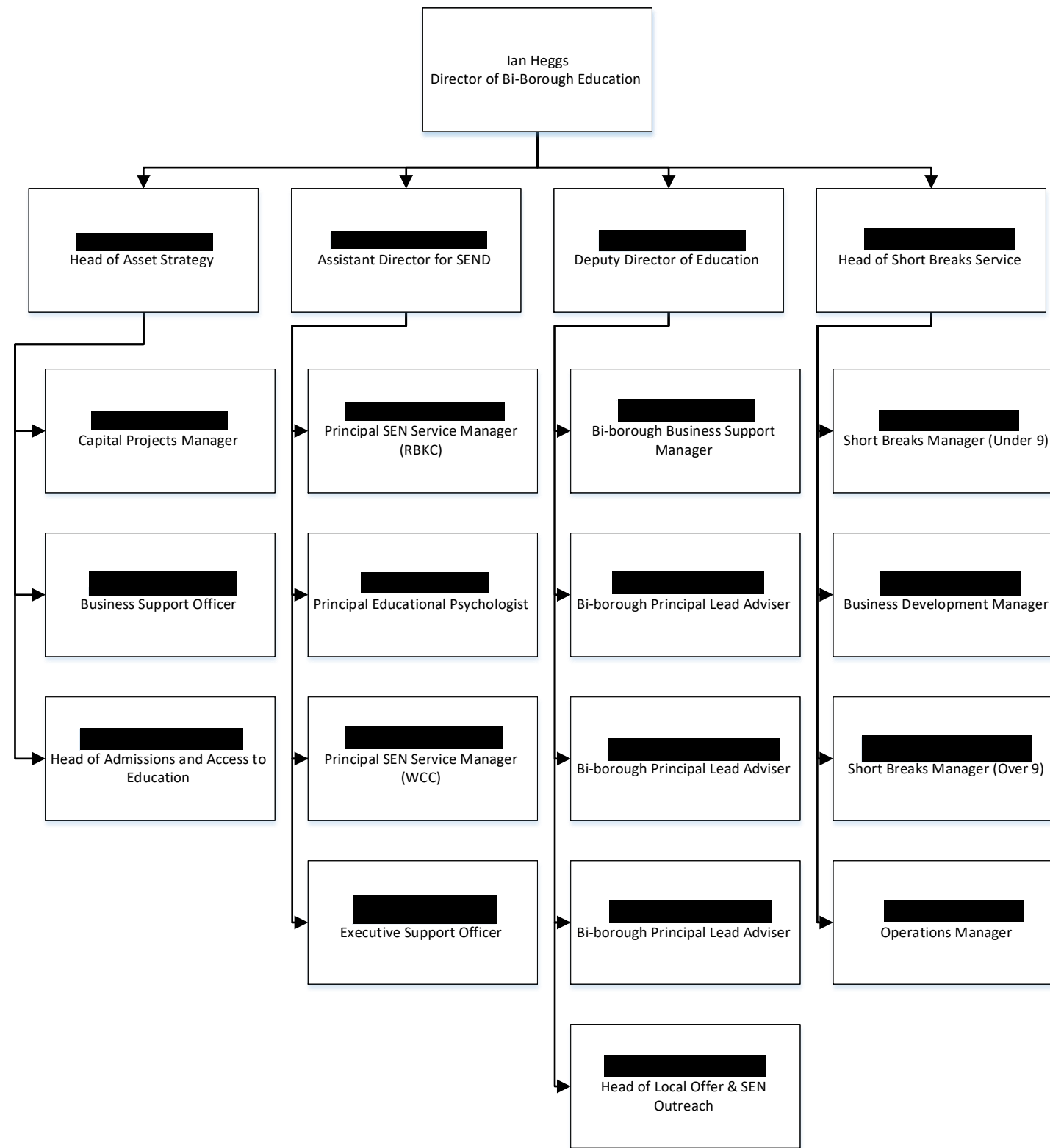
Strategic Transformation Lead

Bi-Borough Strategic Lead
Childcare & Early Education Service

Strategic Placements and Planning
Manager

Customer Relationship Manager

Executive Support Manager

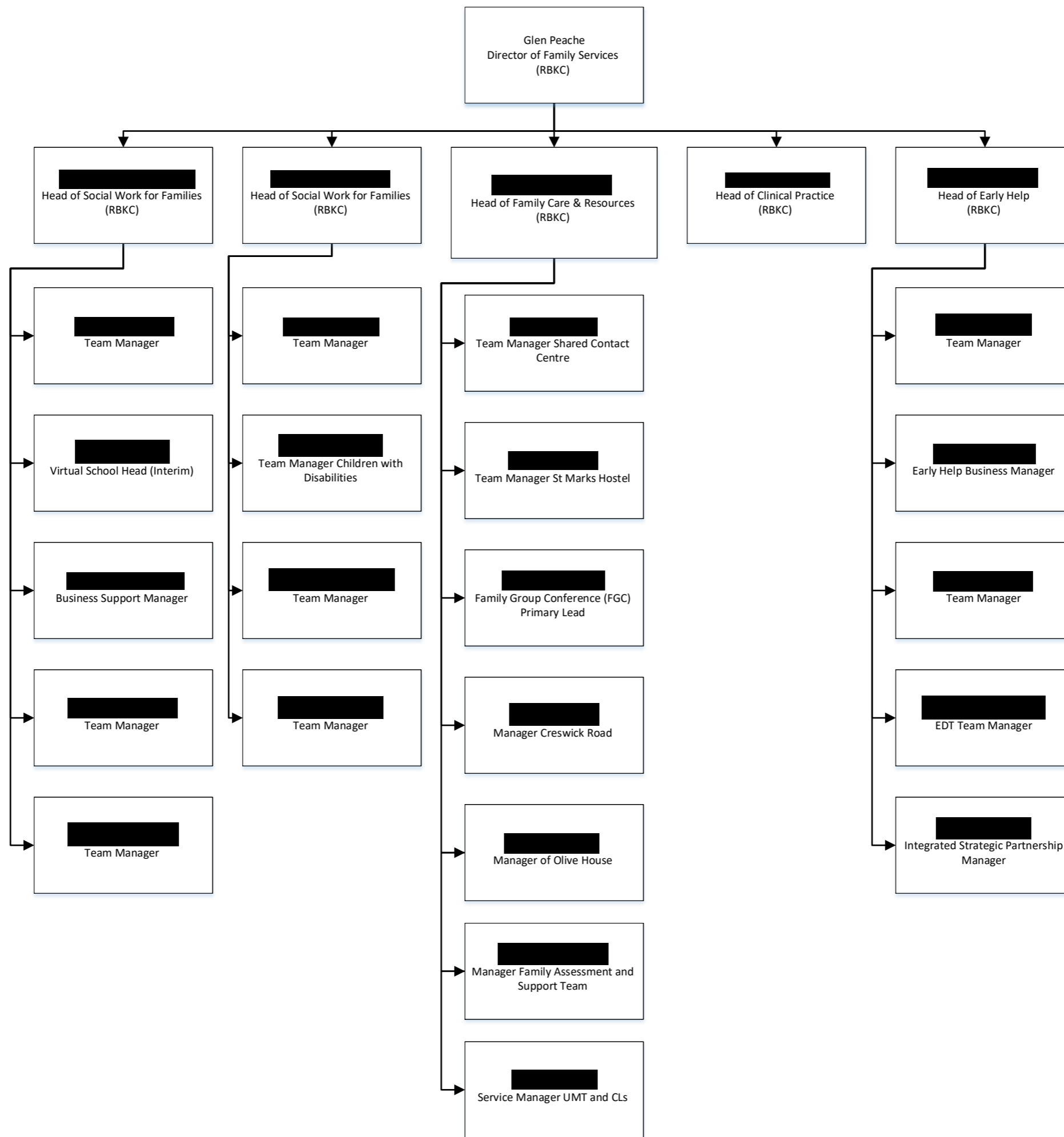


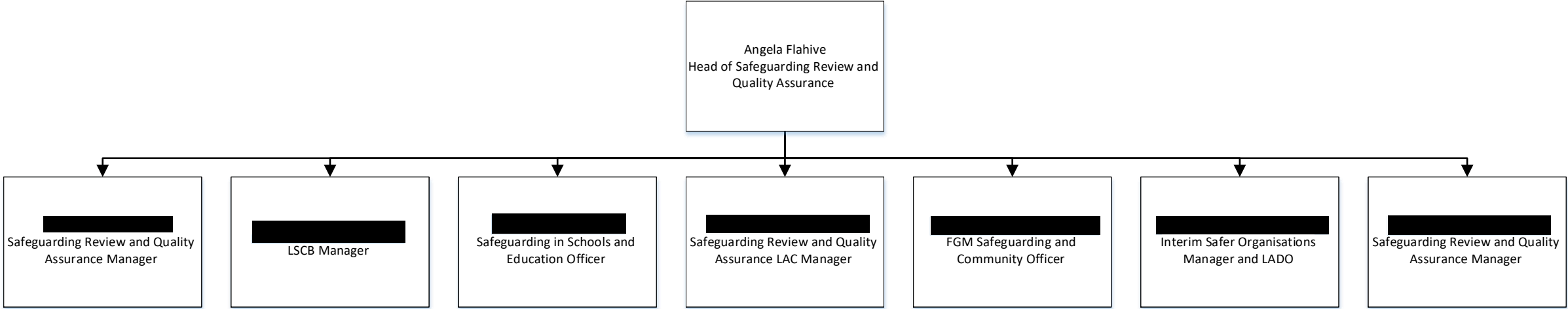
Annabel Saunders
Assistant Director of
Commissioning & Innovation -
Children's



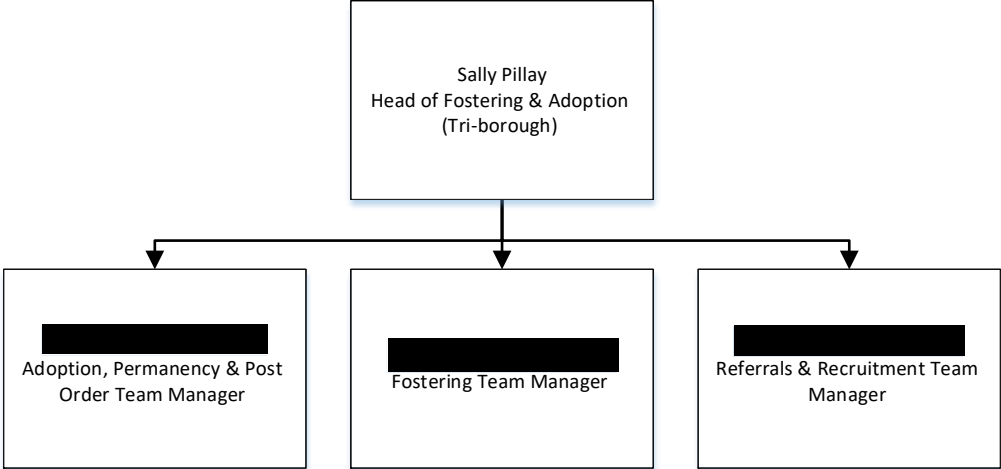
[REDACTED]
Head of Commissioning Children's
Services

[REDACTED]
Head of Travel Care
Commissioning





Tri Borough Service: Fostering and Adoption



Tri Borough Service: Centre for Systemic Social Work

