

SEND 0 – 25 Services – Structure Chart - Statutory Functions

HEAD OF SERVICE – SEND 0-25 – HOS 1

SEND 0 – 25 Social Care Team

Team manager – band G
Assistant Team manager – Band F

Children’s social workers – band E + 2
Children’s family support workers – band D

Adults’ transition social workers – band E + 2
Adults’ support workers – band D

**START – Statutory assessment,
placement & review team**

Team Manager – band G
3 x Senior Plan co-ordinators – band F
6 x Plan Co-ordinators – band E

Educational Psychology

Lead Educational psychologist – Soulbury B
2 x Educational Psychologists – Soulbury A
Associate EPs as required (5 currently registered)
Trainee EP (national programme)

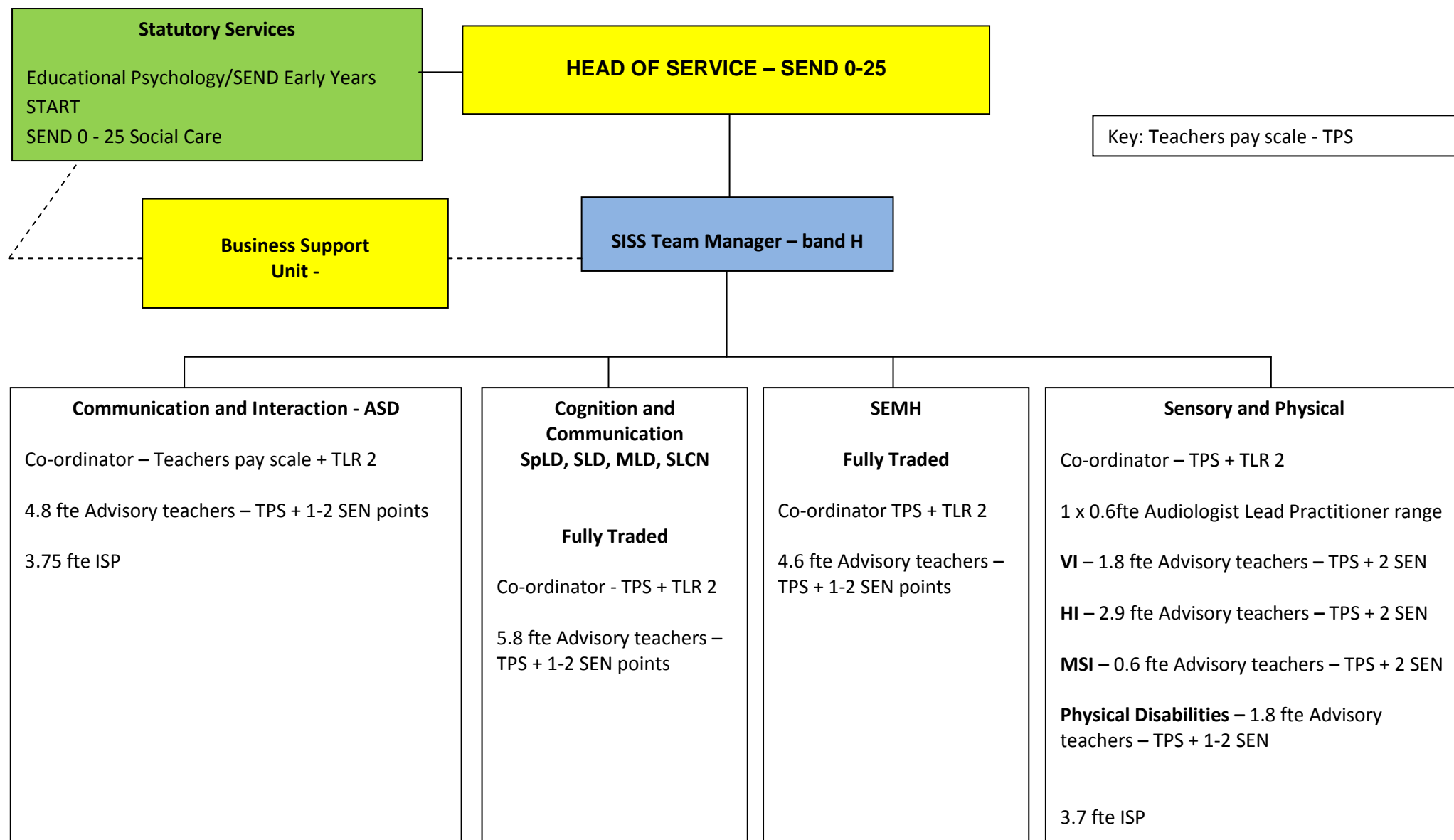
Early Years Team

Co-ordinator – TPS + TLR 2c
4 x Advisory teachers – Teachers pay scale + 1-2 SEN points
3.15 fte ISPs (Inclusion Support Practitioners)

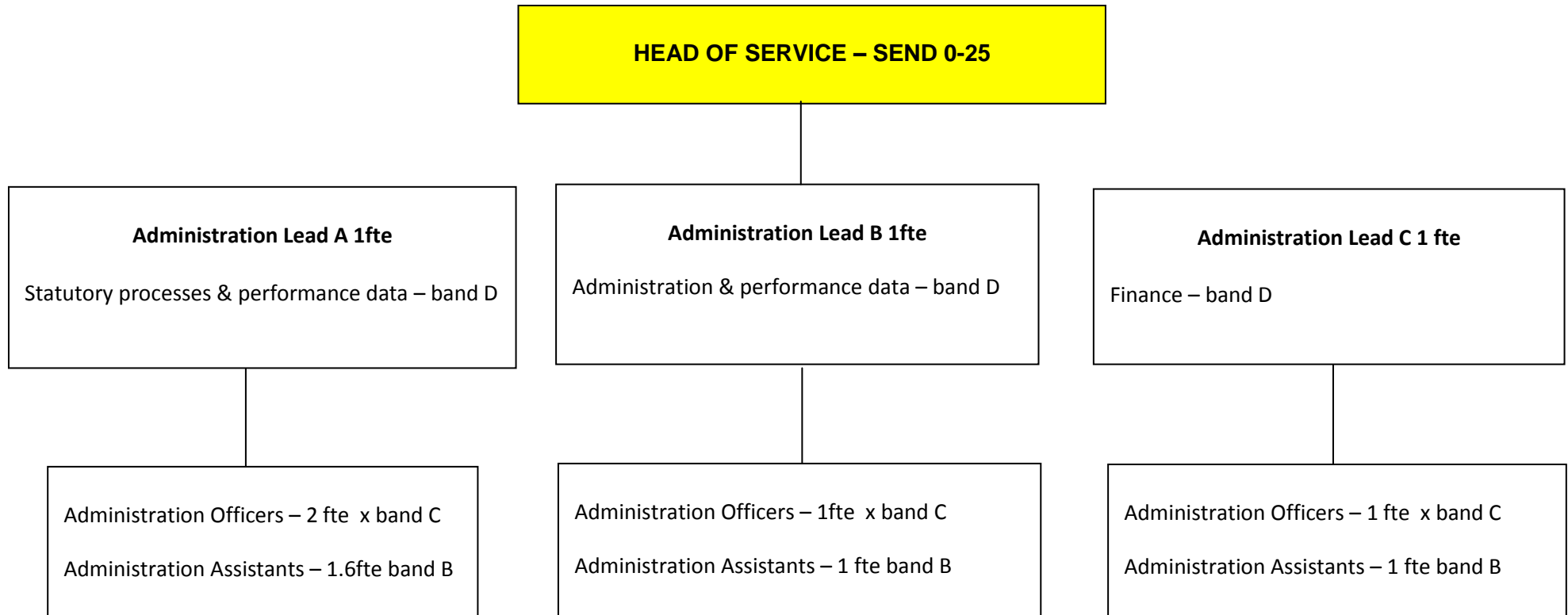
**Non-assessed Short breaks &
Direct payments**

Co-ordinator - band D
Direct Payment worker – band D

SEND 0 – 25 Structure Chart – Non-statutory Services



SEND 0 – 25 Structure Chart – Business Support Unit (all SEND teams)



SEND 0 – 25 Structure Chart – Specialist Provision and Outreach for Speech, Language and Communication Disorders (SLCD)

**Valley Primary
16 places (age N/KS1/KS2) + outreach**

1 fte Teacher in charge - TPS + TLR 2
2 fte teachers – TPS + 1-2 SEN points (1:5 teacher ratio)
2 fte ISP

Adult: child ratio 1:3

**Bishop Wilson primary
12 places (age KS2/KS2)**

1 fte Teacher in Charge TPS + TLR 2
1 fte teacher TPS + 1-2 SEN points (1:6 teacher ratio)
1 fte ISP

Adult: child ratio 1:4

SLCD Outreach

0.8 fte outreach teachers
0.6 fte outreach ISP