

## Learning & Skills Group Structure

**Chris Mathews**  
Commissioner for Education  
Improvement and Efficiency  
(01743) 254556



<b>Phil Wilson</b> Service Delivery Manager (01743) 254344		<b>Julia Dean</b> SEN Manager (01743) 254563 <b>Chris Kerry</b> Education Access Service Manager 01743 254399	<b>Janine Vernon</b> Lifelong Learning Manager (01743) 254442
Schools Admissions School Capital Projects (client) School Transport (client) Traded Services Early Years Foundation Stage Commissioning Commissioning & Procurement Data/ Intelligence (Education) Schools Funding ICT Strategy Support (Education) School CPD Shrewsbury Training & Development Centre Governor Support SEN Transformation & Development Music Service Schools Library Service	Improvement Service Early Years Foundation Stage Support Primary Education Secondary Education Challenge & Support Quality Assurance PSHE School reorganisation TMBSS	SEN Placement & Casework SEN Provision Admission Panel (SEN) EPS Joint Services Behaviour & Support Strategies Exclusion Gypsy Travellers	Information, Advice & Guidance Skills Strategy Worklessness (including Young People) Work Based Learning Apprenticeships / Work Programmes Enable Staff Development (Delivery) Social Care Training (External & Internal) Workforce Development (External) 14-19 College Development

## **Business Support**

**Service Delivery  
Manager - Business  
Support**

**Early Years  
Education  
and  
Childcare**

**Data and  
Information**

2.6 FTE

**Administration**  
7.8 FTEs  
FSM, Educational  
Visits, service  
finance support,  
nursery funding,  
safeguarding  
training, DoE,  
NQTs, CPD  
admin, STDC,  
headteacher  
meetings etc

**School funding –**

1.8 FTE

School funding  
officer processes

**Governor Services**

5.6 FTE  
Governor services  
processes

**School Admissions**

3.5 FTE School  
admissions  
processes

**Training &  
Development**

1.8 FTE

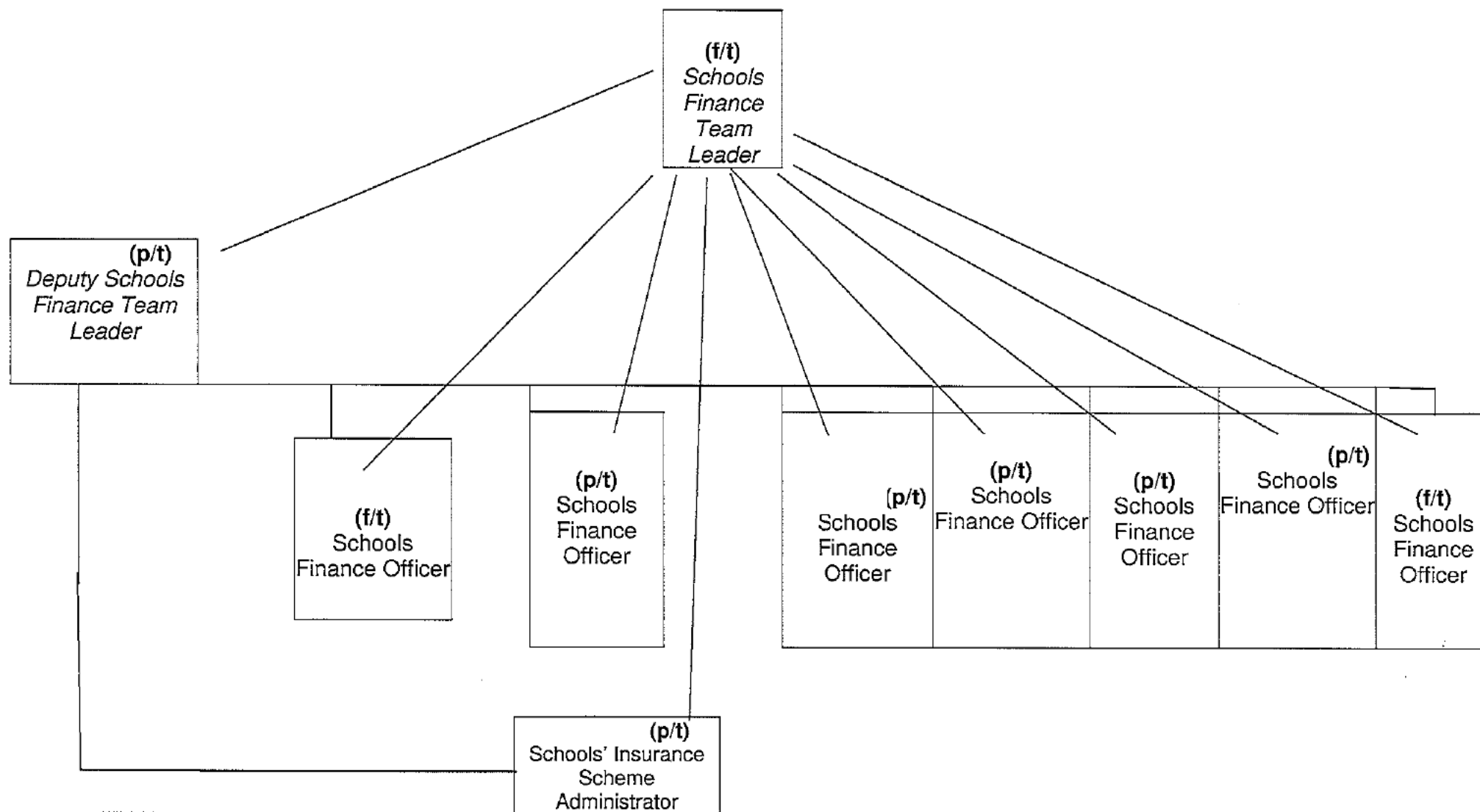
**Schools finance  
team**

(separate chart)

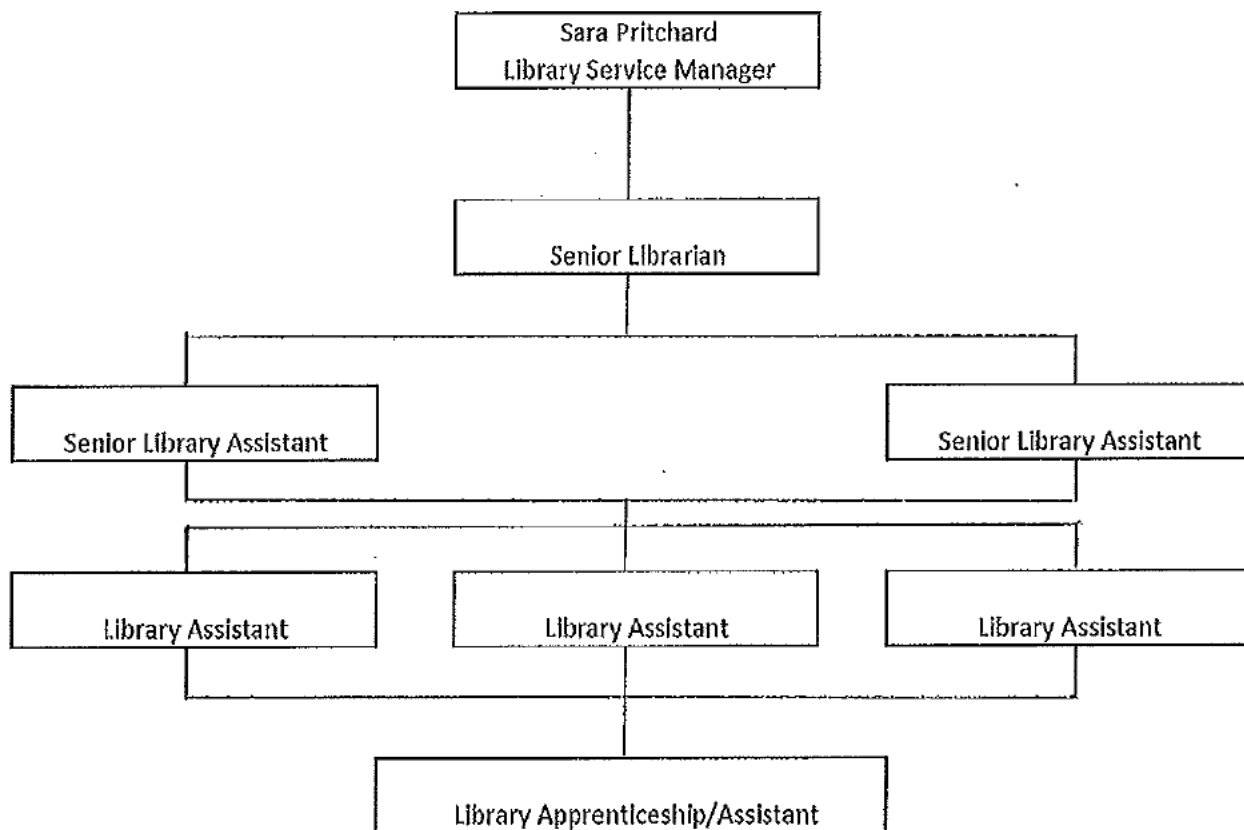
**Schools Library  
Service** (separate  
chart)

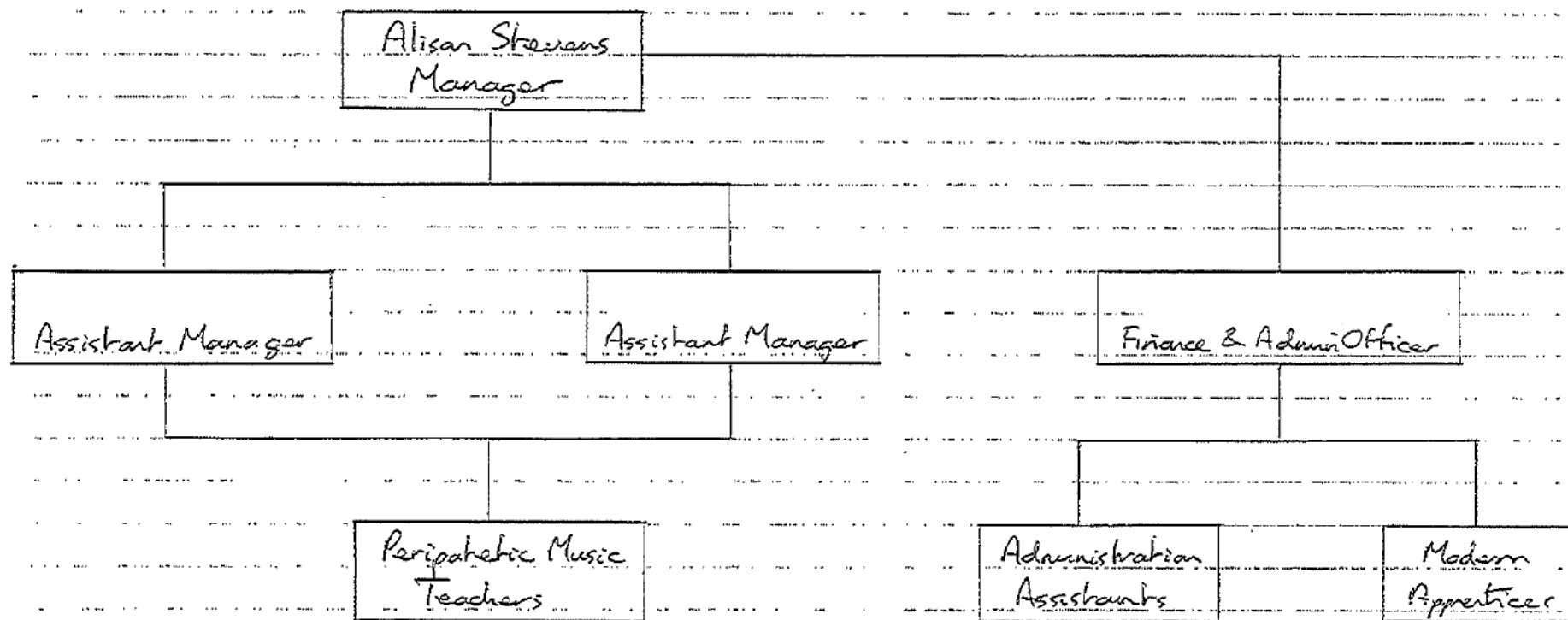
**Shropshire Music  
Service** (separate  
chart)

## Schools Finance Team structure diagram



## SCHOOL LIBRARY SERVICE





SHROPSHIRE MUSIC SERVICE

**Commissioner for Education Improvement & Efficiency**

**Linked teams**

Early Years  
 Education Access Service  
 Educational Psychology Service  
 Music Service  
 Post 16/Information Advice & Guidance  
 Service Delivery/Business Support:  
     Administrative Support  
     Admissions  
     CPD/inc STDC  
     Data Management  
     Educational Management  
         System Support  
     Governor Support  
     Premises  
     School Funding  
 School Library Service  
 Special Educational Needs

**Core team**

1fte Cross-phase senior adviser/commissioner

6 fte School improvement adviser/commissioners with balance across primary /secondary/cross phase

0.5 fte Schools Safeguarding

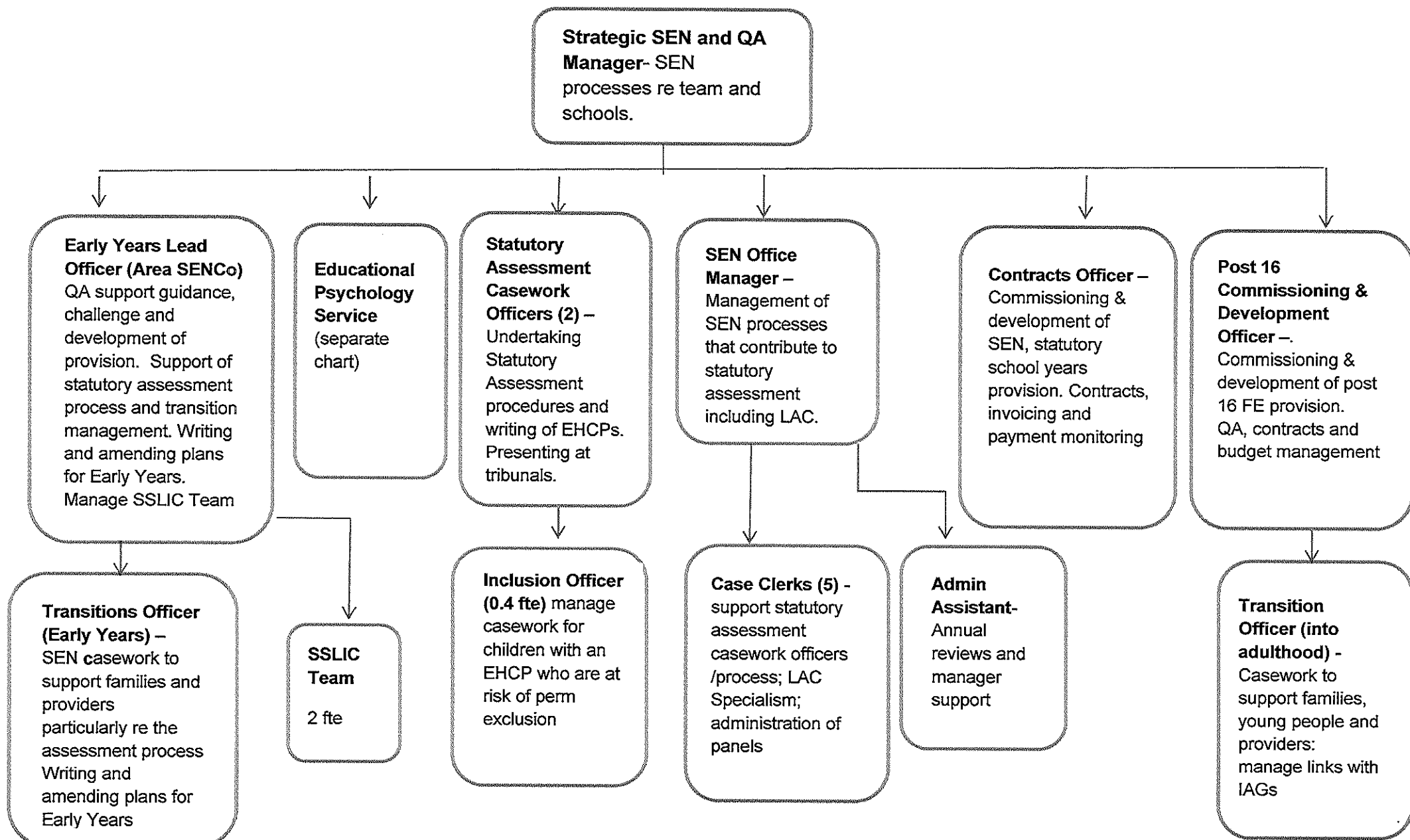
**Commissioned and Traded team**

1 fte EYFS Improvement Adviser  
 1 fte EY Quality Improvement Co-ordinator (QILC)  
 1 fte EY development officer

2 fte English (R-Y5, Y6-Y11+)  
 2 fte mathematics (R-Y5, Y6-Y11+)  
 0.4 fte science (cross phase)

1 fte SEN (cross phase)  
 1.0 fte Safeguarding (cross phase)  
 0.5 fte CPD commissioner and co-ordinator (cross phase)  
 0.8 fte Post-16 development officer; commissioner for IT & PE (cross phase)

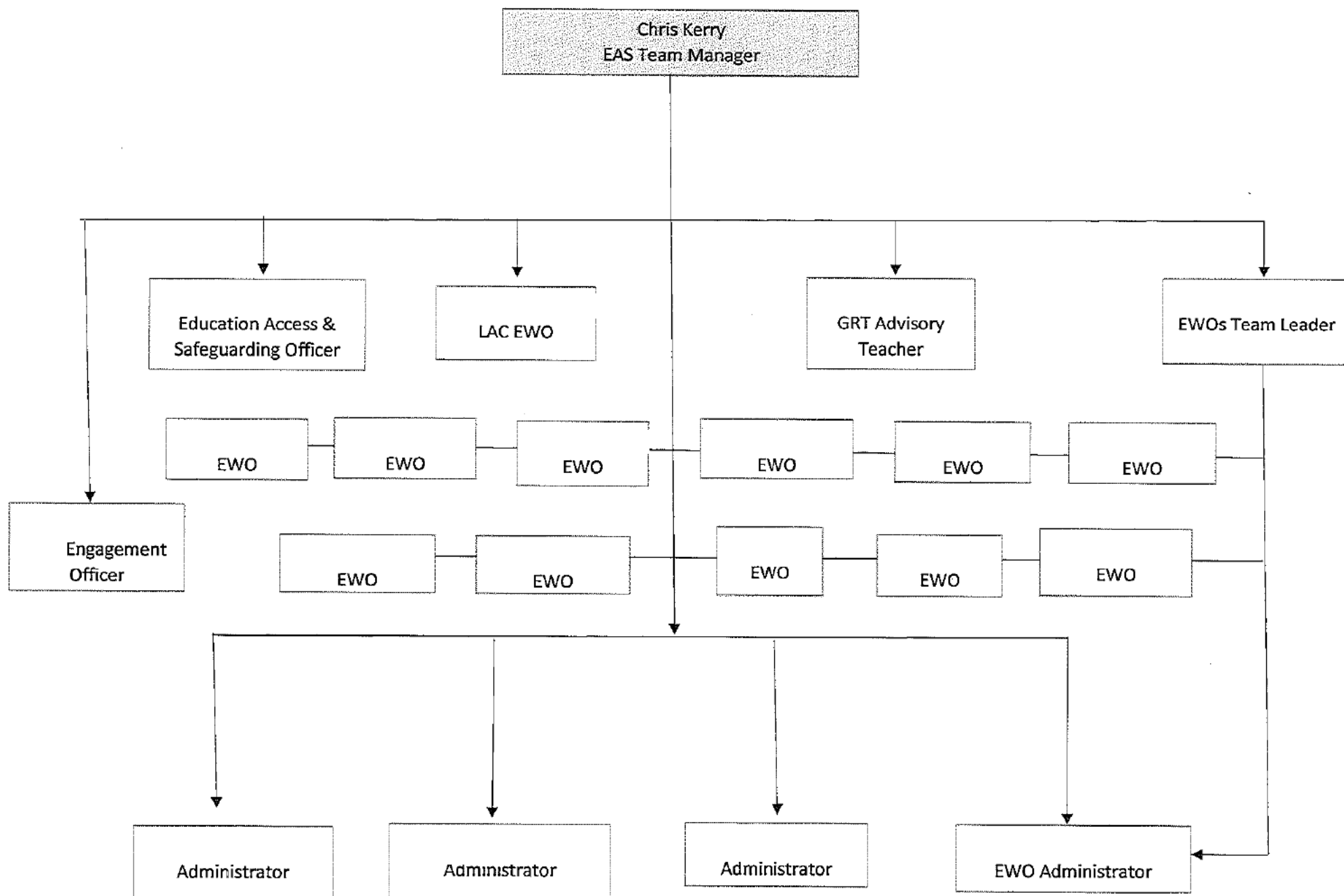
DoE Support Officer  
 Forest Schools Support Officer



SEN Team Structure

+ CONVERSION TEAM x 5

## EDUCATION ACCESS SERVICE





# Educational Psychology Service

**Poppy Chandler  
Principal Educational  
Psychologist**

**Assistant Principal  
Educational Psychologist**

**Specialist Senior  
Educational Psychologist  
Emotional Health  
and Well Being**

**Specialist Senior  
Educational Psychologist  
for Autistic Spectrum  
Condition**

**Specialist Senior  
Educational Psychologist  
for Training and  
Development**

**Senior Practitioner  
Educational Psychologist**

**Senior Practitioner  
Educational Psychologist**

**Senior Practitioner  
Educational Psychologist**

**Educational Psychologist**

**Trainee Educational  
Psychologist**

**Locum Educational  
Psychologist**

**Locum Educational  
Psychologist**

**Senior Administrator**

## Lifelong Learning

