



Annual Report 2012-2013  
12<sup>th</sup> March 2013

## Contents

	Page
Welcome	
Vision	3
Mission	3
Values	3
Strategic Aims	3
The Men's Advisory Project	4
Vice-Chairperson's Report	5
 Management Committee Report	
Management Committee Members	6
 Areas of Update	
Peer Group	7
Training, Orientation & Team Building	7
Staff	7
Website	7
Counselling	7
Anger Management	8
Funding	8
Committee & Strategy	8
Sponsored Walk 2012	8
Against Gender Violence Campaign	8
Acknowledgements	9
Contact Details	9
 Appendices	
Financial Statements April 2011 – April 2012	10-16
Organisation Statistics Reports	17-20
PSNI Domestic Abuse Statistics 2011/12	21
Other Statistics and Information	21
Thank you poem	23



### **VISION**

MAP's vision is of an equitable, inclusive society that recognises and addresses the needs of men affected by experiences such as domestic violence, abuse and relationship breakdown.

### **MISSION**

To provide support, confidential counselling, information and referral services for men experiencing domestic abuse, relationship breakdown and wider men's issues.

### **VALUES**

MAP will deliver services in a professional, non-judgmental, empathic, confidential and safe environment.

MAP will maintain respect and dignity for individuals using the service.

MAP will adhere to the BACP Ethical Framework for Good Practice in Counselling.

MAP will uphold principles of equality and human rights.

### **STRATEGIC AIMS**

To initiate, support and influence to affect positive change.

To deliver quality support services for the benefit of men.

To continually improve and develop the MAP organisation.

## **THE MEN'S ADVISORY PROJECT**

The Men's Advisory Project (MAP) was founded in May 1999, in response to a growing number of men experiencing domestic abuse and domestic crisis with few available avenues of support. It is the intention of MAP to provide a counselling, information, referral and research service to meet an identified need within Northern Ireland.

Along with counselling provided for male victims of domestic abuse, the service now extends to supporting men in circumstances of family and relationship breakdown. Counselling is provided for the severe stress, anxiety and depression often experienced as a result of the practical and emotional difficulties incurred by separation. Anger management counselling has also become available to men and women to help them understand and deal with these strong emotions.

MAP has three small independent offices in Cathedral Buildings, Donegall Street, Belfast, full time Administrator and 18 volunteer counsellors and is run by a volunteer led Board of Directors of which there is currently 8 members. Generally clients can be seen between 9am and 9pm in Belfast. To outreach to the Western areas in Northern Ireland and in an attempt to make services more accessible we have a counsellor working in the Dungannon area and also a counsellor working in the Coleraine area.

At present there are 18 counsellors who between them offer 1200 counselling hours per year. All the counsellors are volunteers and are qualified to at least Diploma level, with the exception of students on the final year of their Diploma. The counselling approach employed is integrated within a client centred therapeutic relationship. Counsellors are professionally supervised in line with BACP (British Association for Counselling and Psychotherapy) guidelines and work on a voluntary basis.

Clients usually self-refer but often present via their GP, community psychiatric nurse or psychiatrist. Others are encouraged to attend by social workers and domestic abuse officers in the Police Service for Northern Ireland. To date evidence would indicate that there is some correlation between domestic violence and mental health difficulties within families where domestic violence is threatened or occurs on a regular basis. Implications for children in these situations are grave and can contribute to the intergenerational pattern of abuse. Given that domestic violence is not isolated to one specific social class or interpersonal relationship type, our clients cover a broad spectrum socially. MAP counsellors work to support and empower clients to effect positive change.

Some of our income is generated by client donations, along with private donations through sponsored activities. As many of our clients are in financial crisis they are unable to make any contribution, but it is the policy of MAP never to refuse counselling for financial reasons. To date, the organisation has received funding from Lloyds TSB, 'Awards for All', Tudor Trust, DHSSPS and the PSNI. During the current financial year we are receiving funding from the Health and Social Care Board. We are grateful for this support.

## **VICE -CHAIRPERSON'S REPORT**

This year MAP has began to recover from the effects of funding difficulties faced in the previous few years. Our secured funding from the Health & Social Care Board enabled this recovery to commence and we have been able to improve our services to the people who need it the most. With secured funding for project costs for the coming year 2013/14 from the Health & Social Care Board, we can foresee further improvement on the past year.

MAP's team of dedicated volunteers have been the most pertinent reason that our services continued to be delivered in 2012/13. The volunteers are the organisations greatest asset and it is with the commitment from the volunteers that we improved the service to the people who needed it.

Men are becoming more aware that they can be victim to domestic abuse and this awareness is steadily growing. The issue was highlighted last year when Coronation Street screened a violent relationship between Tyrone and Kirsty, where Tyrone was beaten by his partner. In July 2012 the PSNI revealed figures showing a significant rise in male victims reporting incidents of domestic abuse. The figures for 2011/12 showed an increase of 20% on the year before. Of the domestic abuse incidents across Northern Ireland in the past year there were an extra 433 male victims and an extra 256 female. The Office for National Statistics published a report 'Focus on Violent Crime and Sexual Offences 2011/12'. The statistics may only cover England and Wales, but the extent of the problem of domestic abuse is as common in this country as it is in Scotland. What some people may be surprised to read is that the figures in this report suggest 40% of victims are male.

This year MAP has focused on the Strategic Plan and how to move the agency forward even though we are still in a time of uncertainty due to the threat of large scale government cuts, although we must remain aware that the difficult economic times create an increased need for the services MAP provide.

The funding received from the Health & Social Care Board for running costs enables MAP to continue to employ a Project Administrator. Unfortunately we cannot at present cover costs of a Project Co-ordinator, this funding is currently being pursued and hopefully the role will be filled within the next year. In the meantime, I would like to thank our Project Administrator who has taken on extra duties in the absence of a Project Co-ordinator, as well as her patience and dedication to the organisation.

It has been an honour for me to hold the position of vice-chair in MAP and I would like to take this opportunity to thank my fellow Board members for continued dedication and commitment to the organisation. It has been a pleasure to work with all of the members and I look forward to continuing this relationship in the future.

I give my utmost appreciation to the volunteers, who through their ongoing commitment have enabled us to reach the targets set for the last year and ensuring that a professional service was delivered to our users.

**JEAN WINTER**  
**VICE-CHAIRPERSON**

## Management Committee Report

### Management Committee Members 2010- 2012

James Knox	Chairperson
Jean Winter	Vice-Chairperson
Frances Huddleston	Treasurer
Lorraine Mawhinney	Secretary
Lorna Smith	
Margaret McIlvenny	
Tracey Iveson	

### Management Committee Members 2012- 2013

James Knox	Chairperson
Jean Winter	Vice-Chairperson
Frances Huddleston	Treasurer
Lorraine Mawhinney	
Lorna Smith	Secretary
Margaret McIlvenny	
Tracey Iveson	
Tom Donnelly	
Simon Langtry	
Philip Hart	

## Peer Group / Supervision

All volunteer counsellors at MAP are provided with 1.5 hours supervision per month in accordance with ethical guidelines described by the BACP. On top of this all volunteer counsellors are required to attend monthly peer group supervision. At MAP we believe peer supervision provides vital support to counsellors with their client work and that it is also an essential learning and teaching experience.

## Training/ Orientation/ Team Building

MAP aims to provide regular training opportunities for volunteers through peer group meetings and special training days and events.

A City & Guilds, Level 1, Profile of Achievement in Anger Management, was offered during the year to volunteers.

We hope to be able to offer further training opportunities to our volunteers over the next year. Volunteers are kept up to date and informed with training provided by others outside of MAP.

## Staff

MAP at present has one member of staff, Michelle McCahon, who has been with the charity from September 2011 in the role of Project Administrator.

## Website

We continue to promote our website which can be viewed at [www.mapni.co.uk](http://www.mapni.co.uk). It provides another point of contact for people seeking information and assistance and it also includes links to other relevant organisations.

MAP now has a Facebook page, which is updated regularly with information about the organisation. It is also another way for the charity to reach out to male victims as well as boost awareness that a service is in place to help and support male victims.

## Counselling

Map continues to provide counselling for men experiencing domestic violence /abuse and relationship breakdown. We also provide counselling for men and women who have identified problems with managing anger and other powerful emotions. We have over the past year increased the number of volunteers providing counselling through ongoing recruitment in order to meet the current demand on the service.

In order to reach out to men in the Western Trust Area, we have established a volunteer counsellor based in Dungannon and a counsellor based in Coleraine.

## Anger Management

MAP continues to offer an Anger Management Group programme to clients who wish to engage in understanding and dealing with their strong emotions.

MAP works in partnership through a sub-contracting arrangement with SELF NI to deliver the group programmes. This programme offers clients the opportunity of working towards a level two City & Guilds Certificate in Personal Development in Anger Management.

During 2012-13 we have been able to offer two group programmes. We will continue to offer this programme in 2013-2014 and aim to increase the number of these programmes provided.

## Funding

At present, funding for project running costs has been secured for April 2013 – March 2014. We hope to be able to work with the Health Trusts this year to try to secure long term core funding and with the Tudor Trust to secure funding to reinstate a much needed Project Co-ordinator. The financial support from funders received to date has been invaluable.

## Committee / Strategy

The management committee meet on a monthly basis and welcome new volunteers to the committee.

MAP's strategic plan in use is current to the end of March 2013. The strategic plan is regularly monitored, reviewed and updated.

## Sponsored Walk 2012

MAP organised its first sponsored walk which took place in August 2012. Participants walked 10 kilometres for the charity and raised a total of £291.00. This money was extremely appreciated! MAP hope to organise other similar events in the upcoming year to raise much needed funds.

## Against Gender Violence Campaign

MAP was invited to take part in the worldwide 'Against Gender Violence Campaign' exhibition that was displayed in Carrickfergus Civic Centre for 16 days in November/December 2012. We understand that this worldwide campaign was founded on fighting violence against women and felt privileged that we were given the opportunity to raise awareness that men can also be the victims of domestic violence.



## **ACKNOWLEDGEMENTS**

### **Volunteers 2012-2013**

Alan McIntosh  
Carole Hall  
Danielle Hill  
David Camack  
Deirdre Nelson  
Eamonn Andrews  
Frances Huddleston  
James Knox  
Jean Winter  
Jennifer Rochette  
Lorna Smith  
Lorraine Mawhinney  
Margaret McIlvenny  
Martin Barr  
Michelle McCahon  
Peter Martin  
Philip Hart  
Reese McKay  
Robert Hadden  
Samantha Kelly  
Simon Langtry  
Terry Deehan  
Tom Donnelly  
Tracy Iveson

### **Funders**

We would like to take this opportunity to thank the Health and Social Care Board for their support over the past twelve months and look forward to continuing to work with them in the future.

### **Contact Details**

Men's Advisory Project  
Cathedral Buildings  
64 Donegall Street  
Belfast  
BT1 2GT  
T: 028 9024 1929  
E: [info@mapni.co.uk](mailto:info@mapni.co.uk)  
W: [www.mapni.co.uk](http://www.mapni.co.uk)

**The Men's Advisory Project Limited**

**Appendices 1**

**Accounts**

*Contents*

Statement of trustees' responsibilities

Independent auditors' report

Statement of financial activities

Balance sheet

## The Men's Advisory Project

### Statement of trustees' responsibilities

Law applicable to Charities in Northern Ireland requires the trustees to prepare financial statements for each financial period which give a true and fair view of the Charity's financial activities during the year and of its financial position at the end of the year. In preparing those financial statements, the trustees are required to:

- select suitable accounting policies and then apply them consistently;
- make judgements and estimates that are reasonable and prudent;
- state whether applicable accounting standards have been followed, subject to any material departures disclosed and explained in the financial statements;
- prepare the financial statements on the going concern basis unless it is inappropriate to presume that the trust will continue in business.

The trustees are responsible for maintaining proper accounting records which disclose with reasonable accuracy at any time the financial position of the trust and to enable them to ensure that the financial statements comply with the Companies Act 2006. They have general responsibility for taking such steps as are reasonably open to them to safeguard the assets of the trust and to prevent and detect fraud and other irregularities.

The trustees of the Charity who held office at the date of approval of these financial statements as set out on page 1, each confirm so far as we are aware that:

- there is no relevant audit information of which the trust's auditors are unaware; and
- we have taken all steps that we ought to have taken as trustees in order to make ourselves aware of any relevant audit information and to establish that the Charity's auditors are aware of that information.

By order of the board

**James Knox**  
*Trustee*

30 January 2013



Chartered Accountants

Chamber of Commerce House  
22 Great Victoria Street  
Belfast BT2 7BA  
Northern Ireland

Tel: 028 9044 2000  
Fax: 028 9044 2050

Hill Vellacott

## Independent auditors' report to the members of The Men's Advisory Project

We have audited the financial statements of The Men's Advisory Project for the year ended 30 April 2012 which comprise statement of financial activities, balance sheet and the related notes. These financial statements have been prepared under the historical cost convention and the accounting policies set out therein.

This report is made solely to the Charity's members, as a body, in accordance with Chapter 3 of Part 16 of the Companies Act 2006. Our audit work has been undertaken so that we might state to the Charity's members those matters we are required to state to them in an auditor's report and for no other purpose. To the fullest extent permitted by law, we do not accept or assume responsibility to anyone other than the Charity and the Charity's members as a body, for our audit work, for this report, or for the opinions we have formed.

### Respective responsibilities of the trustees

As described in the Statement of trustees' responsibilities the Charity's trustees are responsible for the preparation of financial statements in accordance with applicable law and United Kingdom Accounting Standards (United Kingdom General Accepted Accounting Practice).

Our responsibility is to audit the financial statements in accordance with relevant legal and regulatory requirements and International Standards on Auditing (UK and Ireland).

We report to you our opinion as to whether the financial statements give a true and fair view and are properly prepared in accordance with the Companies Act 2006. We also report to you if, in our opinion, the trustees' report is not consistent with the financial statements, if the Charity has not kept proper accounting records, if we have not received all the information and explanations we require for our audit, or if information specified by law regarding trustees' remuneration and transactions with the Charity is not disclosed.

We read the trustees' report and consider the implications for our report if we become aware of any apparent misstatement within it.

### Basis of audit opinion

We conducted our audit in accordance with International Standards on Auditing (UK and Ireland) issued by the Auditing Practices Board. An audit includes examination, on a test basis, of evidence relevant to the amounts and disclosures in the financial statements. It also includes an assessment of the significant estimates and judgements made by the trustees in the preparation of the financial statements, and of whether the accounting policies are appropriate to the Charity's circumstances, consistently applied and adequately disclosed.



Chartered Accountants

Chamber of Commerce House    Tel: 028 9044 2000  
22 Great Victoria Street    Fax: 028 9044 2050  
Belfast BT2 7BA  
Northern Ireland

Hill Vellacott

## Independent auditors' report to the members of The Men's Advisory Project

We planned and performed our audit so as to obtain all the information and explanations which we considered necessary in order to provide us with sufficient evidence to give reasonable assurance that the financial statements are free from material misstatement, whether caused by fraud or other irregularity or error. In forming our opinion we also evaluated the overall adequacy of the presentation of information in the financial statements.

### Opinion

In our opinion:

- the financial statements give a true and fair view, in accordance with United Kingdom Generally Accepted Accounting Practice, of the state of the Charity's affairs at 30 April 2012 and of its incoming resources and application of resources in the year then ended.
- the financial statements have been properly prepared in accordance with the Companies Act 2006.
- the information given in the trustees' report is consistent with the financial statements.

**P. Hegarty, FCCA (Senior Statutory Auditor)**  
**For and on behalf of Hill Vellacott**  
*Chartered Accountants &  
Statutory Auditors*

30 January 2013

## The Men's Advisory Project

Statement of financial activities  
Year ended 30 April 2012

		Unrestricted funds	Restricted funds	Year ended 30/04/12	Year ended 30/04/11
	Note	£	£	£	£
<b>Incoming resources</b>					
Incoming resources from charitable activities					
DHSS		10,202	-	<b>10,202</b>	68,434
HSCB		39,500	-	<b>39,500</b>	-
Tudor Trust		-	13,620	<b>13,620</b>	20,090
Contributions from clients		4,275	-	<b>4,275</b>	3,118
Other incoming resources		15	-	<b>15</b>	19
<b>Total incoming resources</b>		<b>53,992</b>	<b>13,620</b>	<b>67,612</b>	<b>91,661</b>
<b>Resources expended</b>					
Governance costs	2	1,400	-	<b>1,400</b>	1,200
Charitable activities	2	43,755	12,870	<b>56,625</b>	101,193
<b>Total resources expended</b>		<b>(45,155)</b>	<b>(12,870)</b>	<b>(58,025)</b>	<b>(102,393)</b>
<b>Net incoming / (outgoing) resources</b>	3	<b>8,837</b>	<b>750</b>	<b>9,587</b>	<b>(10,732)</b>
Fund balances brought forward		15,713	-	<b>15,713</b>	26,445
Transfer		750	(750)	-	-
<b>Fund balances carried forward</b>		<b>25,300</b>	<b>-</b>	<b>25,300</b>	<b>15,713</b>

The Charity has no recognised gains or losses other than those included above and therefore no separate statement of total recognised gains and losses has been presented.

The incoming resources and resources expended amounts as stated above are derived solely from continuing operations.

The notes on pages 10 to 16 form part of these financial statements.



## The Men's Advisory Project

Balance sheet  
30 April 2012



	Note	2012 £	2011 £
<b>Fixed assets</b>			
Tangible fixed assets	6	199	1,849
<b>Current assets</b>			
Debtors	8	24,073	1,468
Cash at bank and in hand		6,612	13,973
		<u>30,685</u>	<u>15,441</u>
<b>Creditors - amounts falling due within one year</b>	9	<u>(5,584)</u>	<u>(1,577)</u>
<b>Net current assets</b>		<u>25,101</u>	<u>13,864</u>
<b>Net assets</b>		<u>25,300</u>	<u>15,713</u>
<b>Funds</b>			
Unrestricted funds – general reserve		25,300	15,713
Restricted funds	12	-	-
		<u>25,300</u>	<u>15,713</u>

The financial statements were approved by the trustees on 30 January 2013 and signed on their behalf by:

**James Knox**  
Trustee

Registration number: NI038175  
Charity registration number: XR35454

The notes on pages 10 to 16 form part of these financial statements.

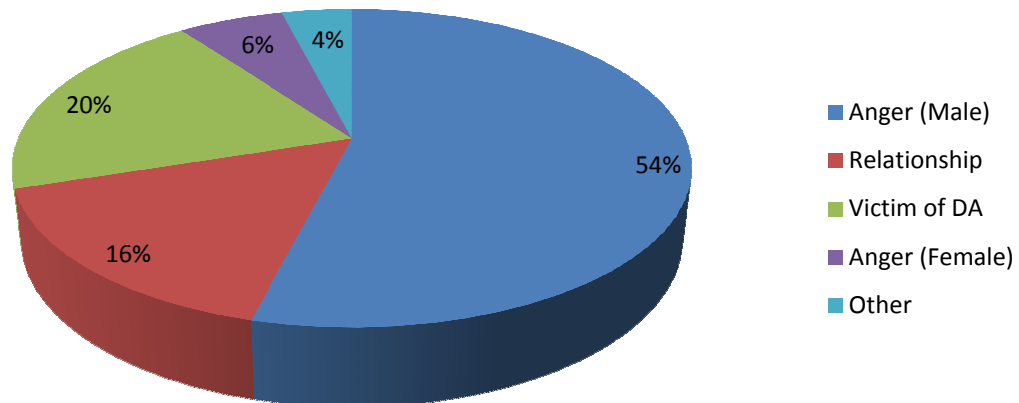


**The Men's Advisory Project Limited**

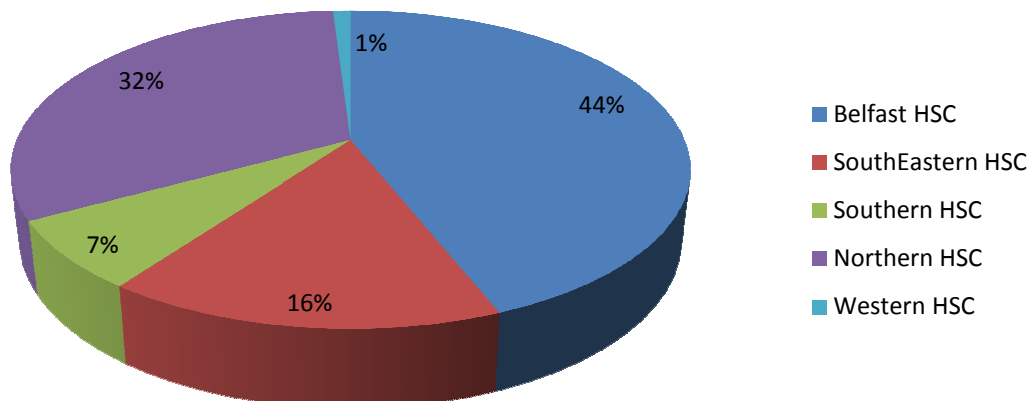
**Appendices 2**

**Reports**

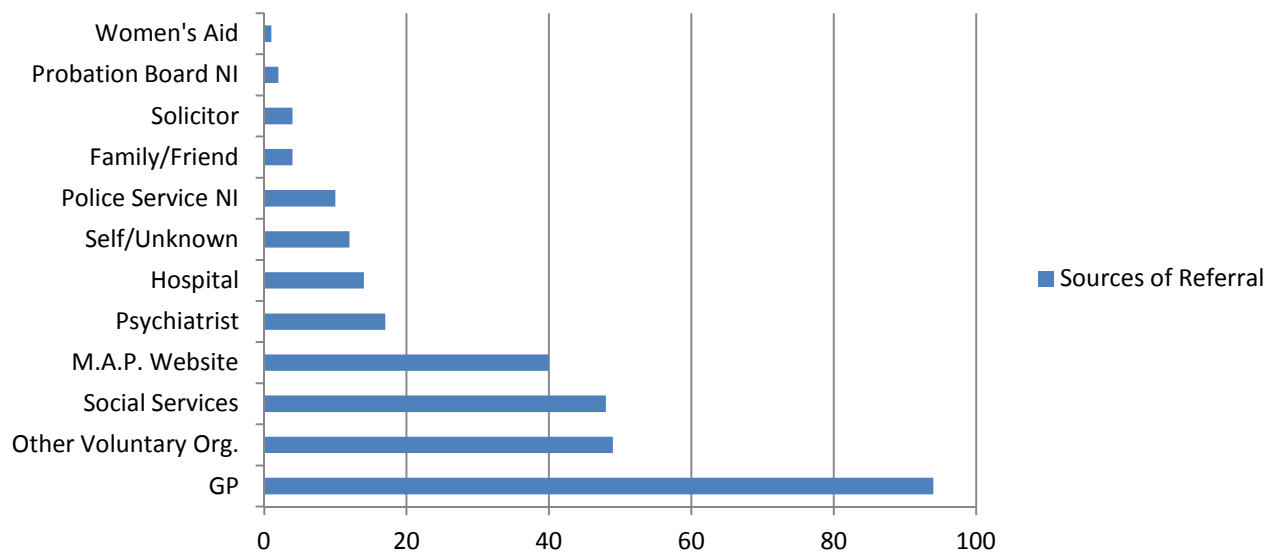
### Presenting Issues March 2012 - February 2013



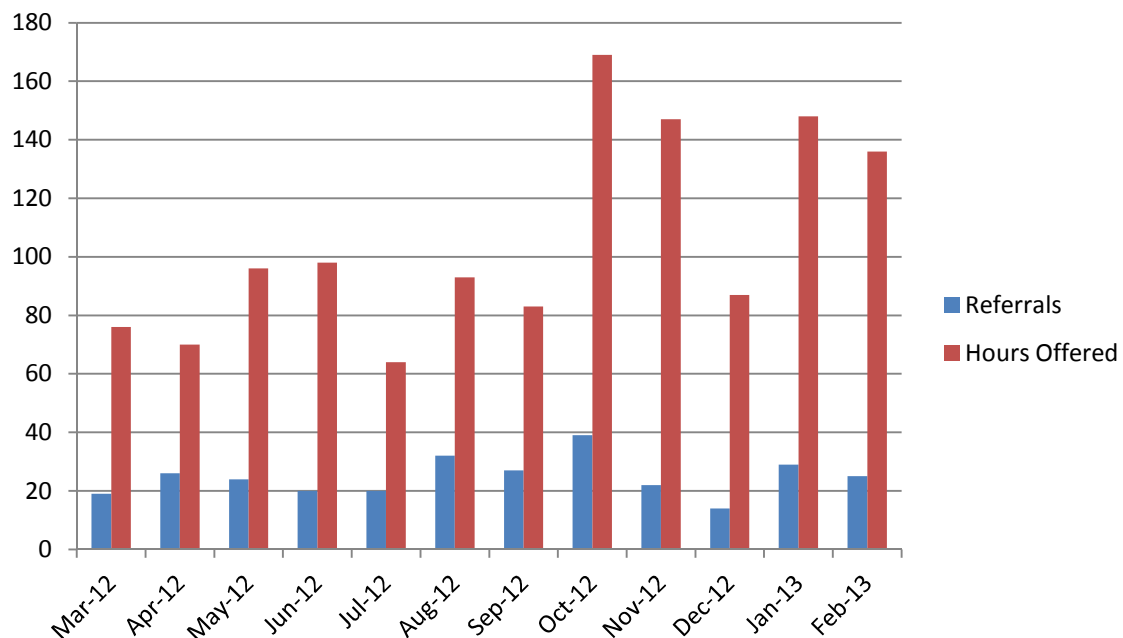
### Origins of Referrals March 2012 - February 2013



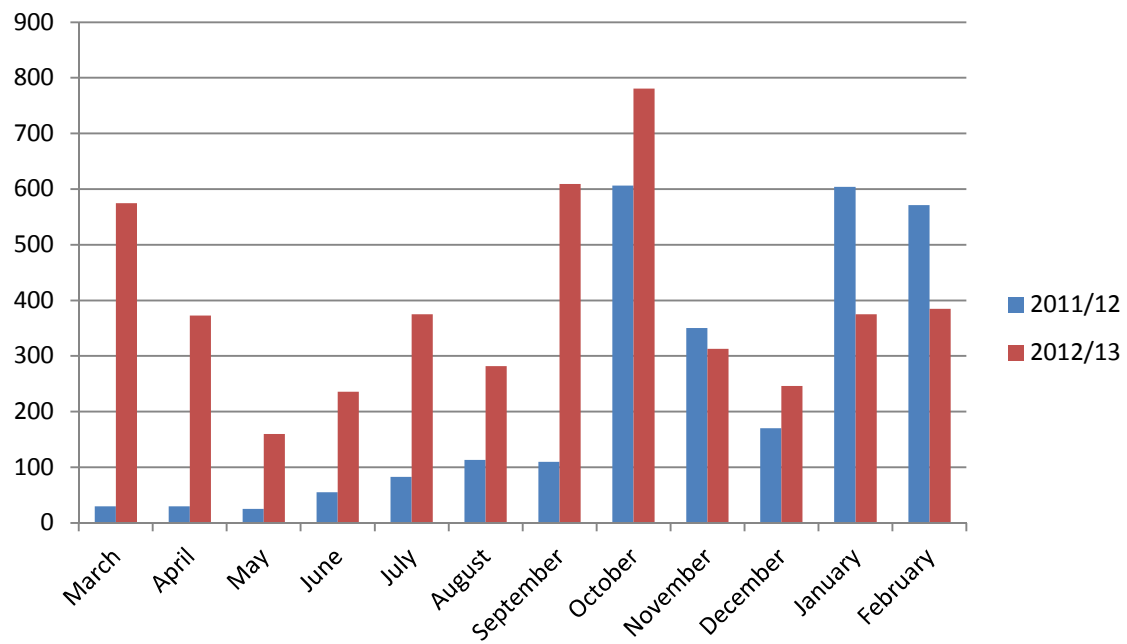
## Sources of Referral March 2012 - February 2013



## Referrals and Counselling Hours Offered 2012/13.



## Donations received 2011/12 & 2012/13.



## PSNI Domestic Abuse Statistics 2011/12

There were 25,196 domestic abuse incidents recorded in 2011/12, an increase of 11.1% on the year 2010/11.

9,368 domestic abuse crimes were recorded where the victim's age and gender details were known:

Under 18:	979
Female 18+:	6,123
Male 18+:	2,266

2011/12 figures show 20% increase in number of male victims reporting domestic abuse crimes from 2010/11.

*All data taken from PSNI Reports.*

- *Trends in Domestic Abuse Incidents and Crimes Recorded by the Police in Northern Ireland 2004/05 to 2011/12. Annual Bulletin. Published, 5<sup>th</sup> July 2012. PSNI Northern Ireland Statistics and Research Agency*

## Other Statistics & Information

A total of 476 male callers contacted the 24hr Domestic Abuse Helpline run by Women's Aid from 1<sup>st</sup> April 2010 to 31<sup>st</sup> March 2011. This was an increase of 81 male callers from the previous year. (*Women's Aid Annual Report 2011-2012, pg. 35*)

The number of women convicted of perpetrating domestic abuse has more than quadrupled in the past seven years from 806 (2004/05) to 3,965 (2010/11). (*Mankind Initiative, Feb. 2013*)

In September 2012, the Home Office announced that the definition of domestic violence would be widened to include those aged 16-17 and wording to reflect coercive control. The decision follows a Government consultation which saw respondents call overwhelmingly for this change. We will also be changing the title of the definition to 'domestic violence and abuse'

The new definition will be implemented in March 2013.

The definition of domestic violence and abuse now states:

"Any incident or pattern of incidents of controlling, coercive or threatening behaviour, violence or abuse between those aged 16 or over who are or have been intimate partners or family members regardless of gender or sexuality. This can encompass, but is not limited to, the following types of abuse:

- psychological
- physical
- sexual
- financial
- emotional

“Controlling behaviour is: a range of acts designed to make a person subordinate and/or dependent by isolating them from sources of support, exploiting their resources and capacities for personal gain, depriving them of the means needed for independence, resistance and escape and regulating their everyday behaviour.

“Coercive behaviour is: an act or a pattern of acts of assault, threats, humiliation and intimidation or other abuse that is used to harm, punish, or frighten their victim.”

\* This definition, which is not a legal definition, includes so called 'honour' based violence, female genital mutilation (FGM) and forced marriage, and is clear that victims are not confined to one gender or ethnic group. (*Home Office, 2013*)

#### **References/Sources:**

Home Office, 2013. *Domestic Violence*. <http://homeoffice.gov.uk/crime/violence-against-women-girls/domestic-violence/> [Accessed 5<sup>th</sup> March 2013]

Mankind Initiative, 2013. *Male Victims of domestic and partner abuse - 21 key facts*. [http://www.mankind.org.uk/pdfs/21%20Key%20Facts Feb%202013.pdf](http://www.mankind.org.uk/pdfs/21%20Key%20Facts%20Feb%202013.pdf) [Accessed 5<sup>th</sup> March 2013]

Women's Aid, 2012. *Annual Report 2011-2012*. Women's Aid Federation Northern Ireland.

Thank you poem received December 2012

MAP

I will never forget the first time  
I walked through your door  
my face stained with tears  
my jeans were tore

on my appearance  
you did not comment  
my agitated manor  
you did not lament

you did not question  
nor did you doubt  
just let me talk  
until my words ran out

you saw me as a person  
when I was at my worst  
that type of reaction  
for me was a first

I left that day with hope  
and feeling relived  
that is the effect  
of simply being believed

that day started my journey  
on a long winding road  
I know I can make it  
now I have help with my load

before I went through that door  
with my options seemed few  
so to the people at MAP  
this is my humble "thank you"

By  
Forty Two