

BF1 Elevation Notes:

- Dry Ventilated Ridge Tile.
- Concrete Interlocking Roof Tiles.
- uPVC rainwater goods on uPVC fascia board with over fascia ventilation.
- Double Glazed uPVC windows.
- Sanitary rooms to have obscure glazing - where applicable.
- Roughcast to upper half of front elevation.
- Facing brick main finish.
- Facing brick soldier course feature band.
- Facing brick soldier course feature below and above windows.
- Soldier courses to be in contrasting brick from main brick finish.
- Rear Lamp to be fitted only when barrier free is required to rear of plot.
- External Doors to be Steel Doorset.
- Garage Doors to be Steel - where Applicable

Photovoltaic Notes:

Panels to be:

- Installed as per manufacturers instructions
- 300mm minimum from roof eaves and ridge.
- 600mm from gables.
- 450mm from roof vent tiles
- 150mm from separating wall centre line.

Building Regulation Notes:

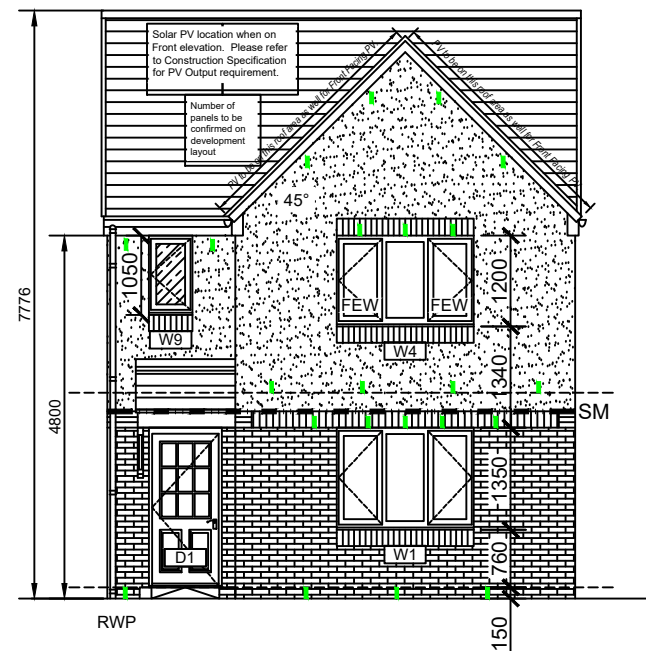
- Fire Escape Windows (FEW) to have unobstructed opening area that is at least 0.33m² and at least 450x450mm
- Edge of Gas Flues to be 300mm minimum from edge of other terminals.

Perpend vents above opening should be spaced at maximum 450mm intervals. Each opening should have at least two weep vents per opening. Weep vents should also be provided at the following (as indicated on elevations):

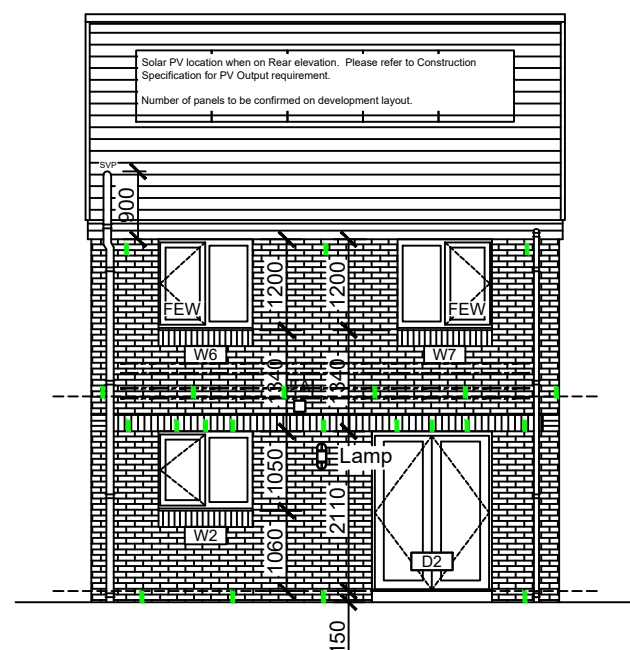
- Below DPC at GF level @ 1200mm ctrs max.
- Below cavity barrier at GF ceiling level @ 1200mm ctrs.
- At FF level @ 1200mm ctrs max
- Below eaves cavity barrier @ 1200mm ctrs max.
- Below verge cavity barrier @ 1200mm ctrs max.

Cavity barriers are to be provided in the following locations

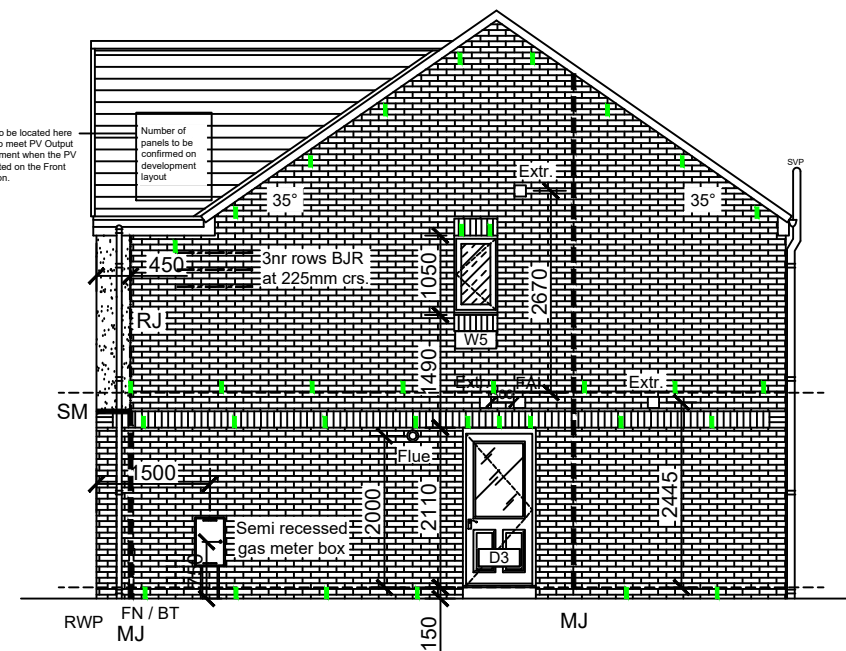
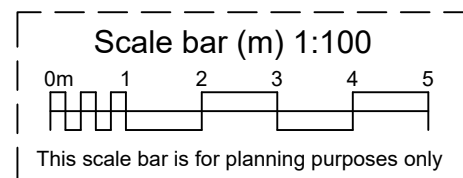
- Around edges of cavity
- Around windows and door openings
- Around all penetrations
- At 8m maximum centres
- At all wall corners.



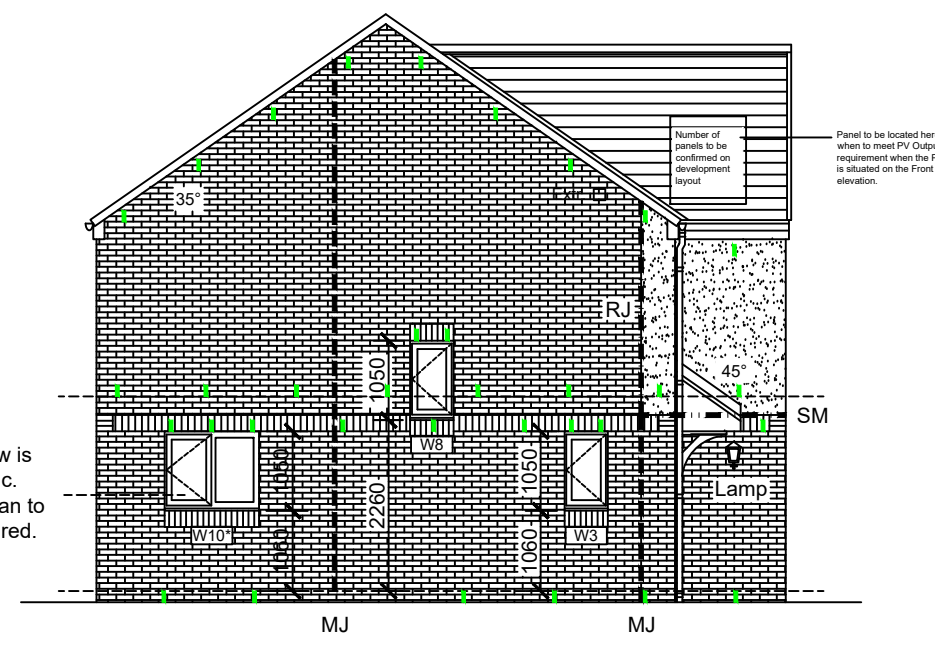
FRONT ELEVATION



REAR ELEVATION

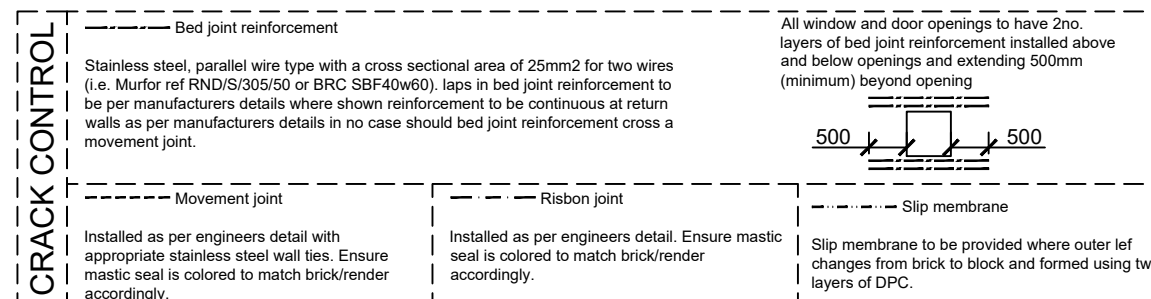


RIGHT GABLE ELEVATION



LEFT GABLE ELEVATION

Feature window is site/plot specific. Refer to site plan to confirm if required.



Elgin

BF1: Brick Main & Roughcast Feature

notes

B	En-suite extract to wall vent, eyebrow vent tiles removed.	13/01/20	
A	FibreNest location altered, BT removed.	14.2.19	
no.	revision	date	by

	PERSIMMON	
Persimmon Homes North Scotland Ltd Broxden House, Broxden Business Park Lamberkine Drive, Perth, PH1 1RA tel. 01738 500820 fax. 01738 622548	Persimmon Homes (East Scotland) Ltd Unit 1, Wester Inch Business Park, Old Well Court, Bathgate EH48 2TQ tel. 01506 638300 fax. 01506 638301	Persimmon Homes (West Scotland) Ltd Persimmon House, 180 Findochty Street, Garthamlock, Glasgow, G33 5EP tel. 0141 766 2600 fax. 0141 766 2605

Drawing Title
Elevations - BF1
Detached

2015 Building Regulations

Housetype
Elgin - V6

Scale 1:100@A3	Date Oct 16	Drawn -
--------------------------	-----------------------	-------------------

Type T-FRAME	File Location -
------------------------	---------------------------

Scottish Town Range

Dwg No. NS_V6-TF-957d(15)401	Rev. B
--	------------------