

Fife Council

Management Structure



Steve Grimmond
Chief Executive
ext. 444143



Carrie Lindsay
**Executive Director,
Education & Children's Services**
ext. 480218



Keith Winter
**Executive Director,
Enterprise & Environment**
ext. 442284



Eileen Rowand
**Executive Director,
Finance & Corporate Services**
ext. 444120



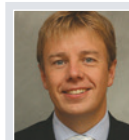
Michael Enston
**Executive Director,
Communities**
ext. 441198



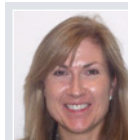
Michael Kellet
**Director of Health
and Social Care**
ext. 444112



Dougie Dunlop
**Head of Education & Children's Services
(Enhancing Opportunities for the
Vulnerable)**
ext. 470437



Ken Gourlay
**Head of Asset, Transportation
& Environment**
ext. 440473



Heather Honeyman
Assessor
ext. 440328



Paul Vaughan
**Head of Community & Corporate
Development**
ext. 441241



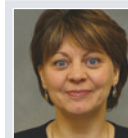
David Heaney
**Divisional General Manager
East Fife**
ext. 441179



Peter McNaughton
**Head of Education & Children's Services
(Broad General Education)**
ext. 444221



Robin Presswood
**Head of Economy,
Planning & Employability**
ext. 442260



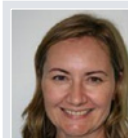
Linda Bissett
Head of Democratic Services
ext. 442301



Lynne Harvie
**Head of Customer Service
Improvement**
ext. 444263



Julie Paterson
**Divisional General Manager
Fife Wide**
ext. 441180



Jacqueline Price
**Head of Education & Children's Services
(Early Years)**
ext. 442045



Elaine Muir
Head of Finance
ext. 480237



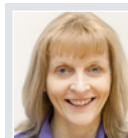
John Mills
Head of Housing Services
ext. 480269



Claire Dobson
**Divisional General Manager
West Fife**
ext. 401428



Shelagh McLean
**Head of Education & Children's Services
(Equity & System Improvement)**
ext. 444229



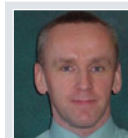
Sharon McKenzie
Head of Human Resources
ext. 444265



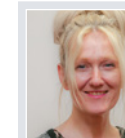
Fiona McKay
Head of Strategic Planning
ext. 445978



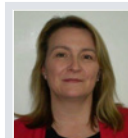
Philip Black
**Head of Education & Children's Services
(Senior Phase & Employability)**
ext. 480217



Charlie Anderson
Head of ICT
ext. 440557



Jen McPhail
Chief Finance Officer
ext. 444715



Morag Ferguson
Head of Legal Services
ext. 442180



Les Robertson
**Head of Revenue
& Commercial Services**
ext. 443932