



Local Public Consultation

Proposed branch change

What we're doing

We're proposing to change the way we operate this Post Office. The branch would continue to be run from the current premises by our new retail partner.

What this would mean:

- A modern open plan branch in the existing premises
- Longer opening hours on Saturdays
- The same wide range of products and services
- Selected Post Office services available at the retail counter

What happens next

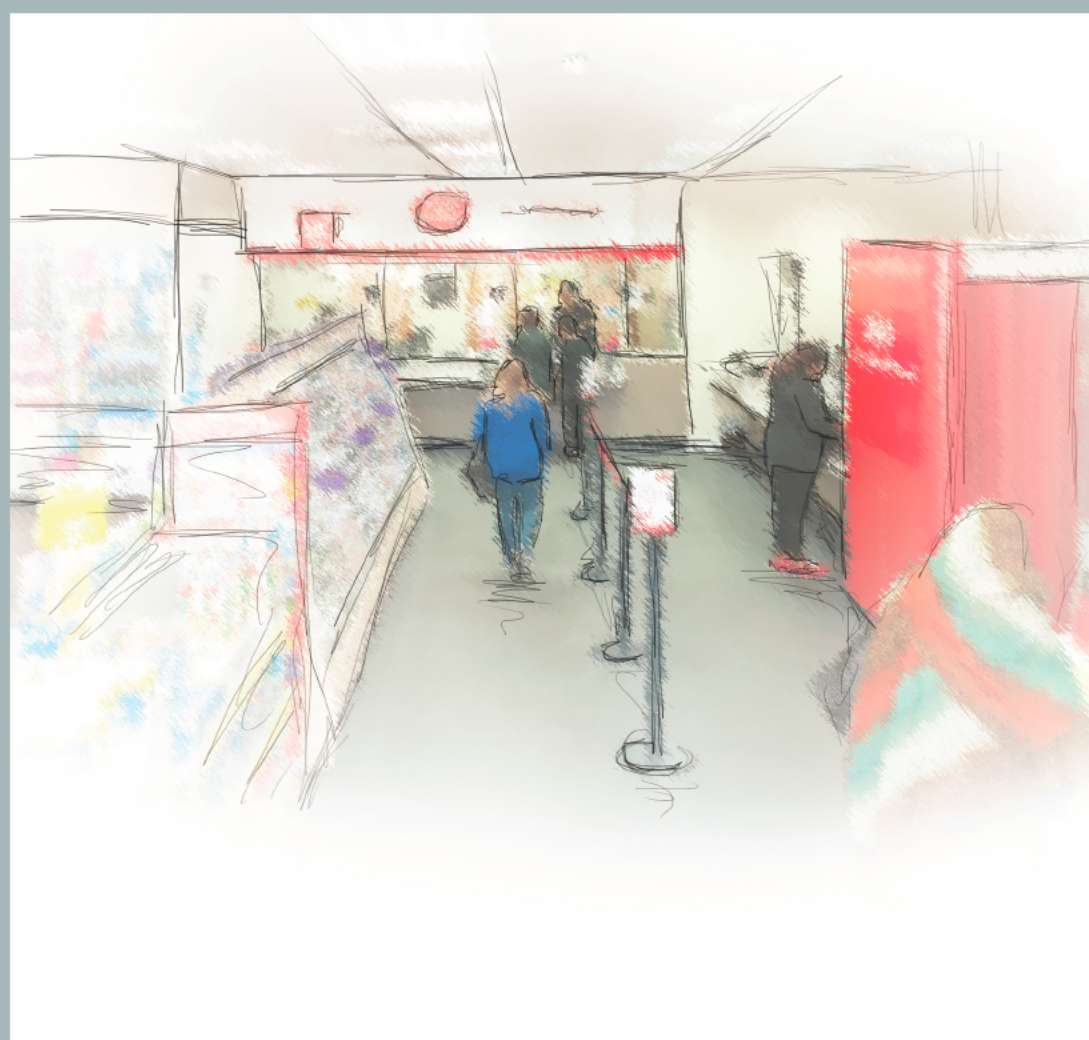
We're carrying out a local public consultation on the new location and we'd like you to let us have your views.

There's a leaflet available in this branch with more information, or if you have any comments, please get in touch via the channels below. Items sent by FREEPOST take 2 working days to arrive. Therefore, responses by FREEPOST should be sent in sufficient time to arrive before the end of the consultation period. Working days do not include Saturdays or Sundays. Responses received after the deadline will not be considered.

Dates for the local public consultation:

Starts: 28/06/2017

Ends: 09/08/2017



• Services

The same wide range of products and services would still be available.

• Access and facilities

Access is level with a wide automatic door at the entrance. A low level serving counter, low level writing desk and hearing loop would be available at the premises.

• Transport/parking

As there would be no change to the location of the branch, customers would be able to use the same local transport and parking facilities.

• Route

The branch would remain in its current location.

Opening times

	Post Office	Retail Counter
Monday	09:00 - 17:30	09:00 - 17:30
Tuesday	09:00 - 17:30	09:00 - 17:30
Wednesday	09:00 - 17:30	09:00 - 17:30
Thursday	09:00 - 17:30	09:00 - 17:30
Friday	09:00 - 17:30	09:00 - 17:30
Saturday	09:00 - 17:30	09:00 - 17:30
Sunday	Closed	Closed

How to contact us:

postofficeviews.co.uk
comments@postoffice.co.uk
FREEPOST Your Comments
Call 03452 66 01 15
Textphone 03457 22 33 55

Want to tell us what you think right here and now -

SCAN HERE



If you don't have a QR code scanner on your phone, you can find one in your app store.

For information in Braille, large print or audio, to see a copy of our Code of Practice about changes to the Post Office® network, or for further information on Post Office products and services, please contact our Customer Helpline or visit our website, as detailed.