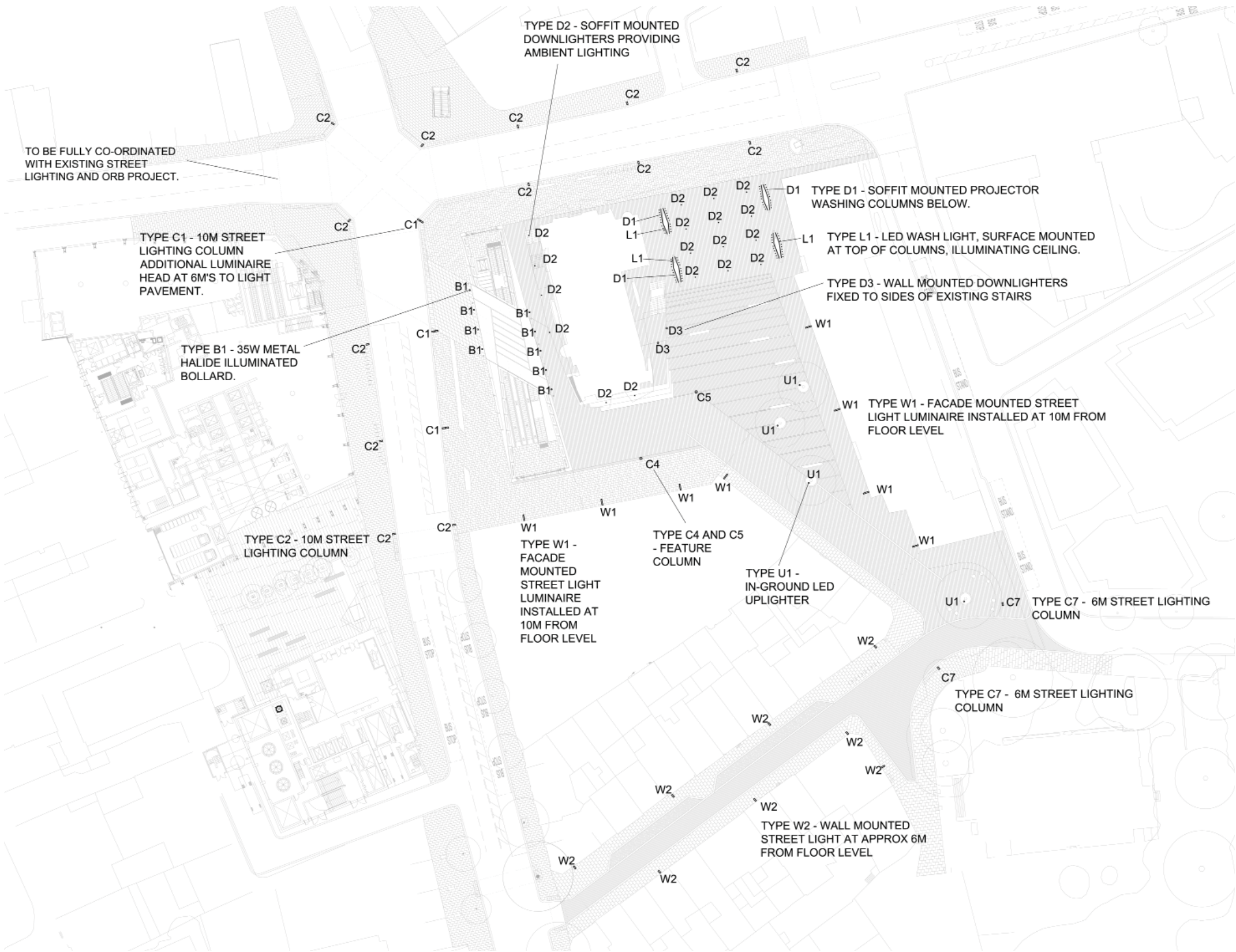


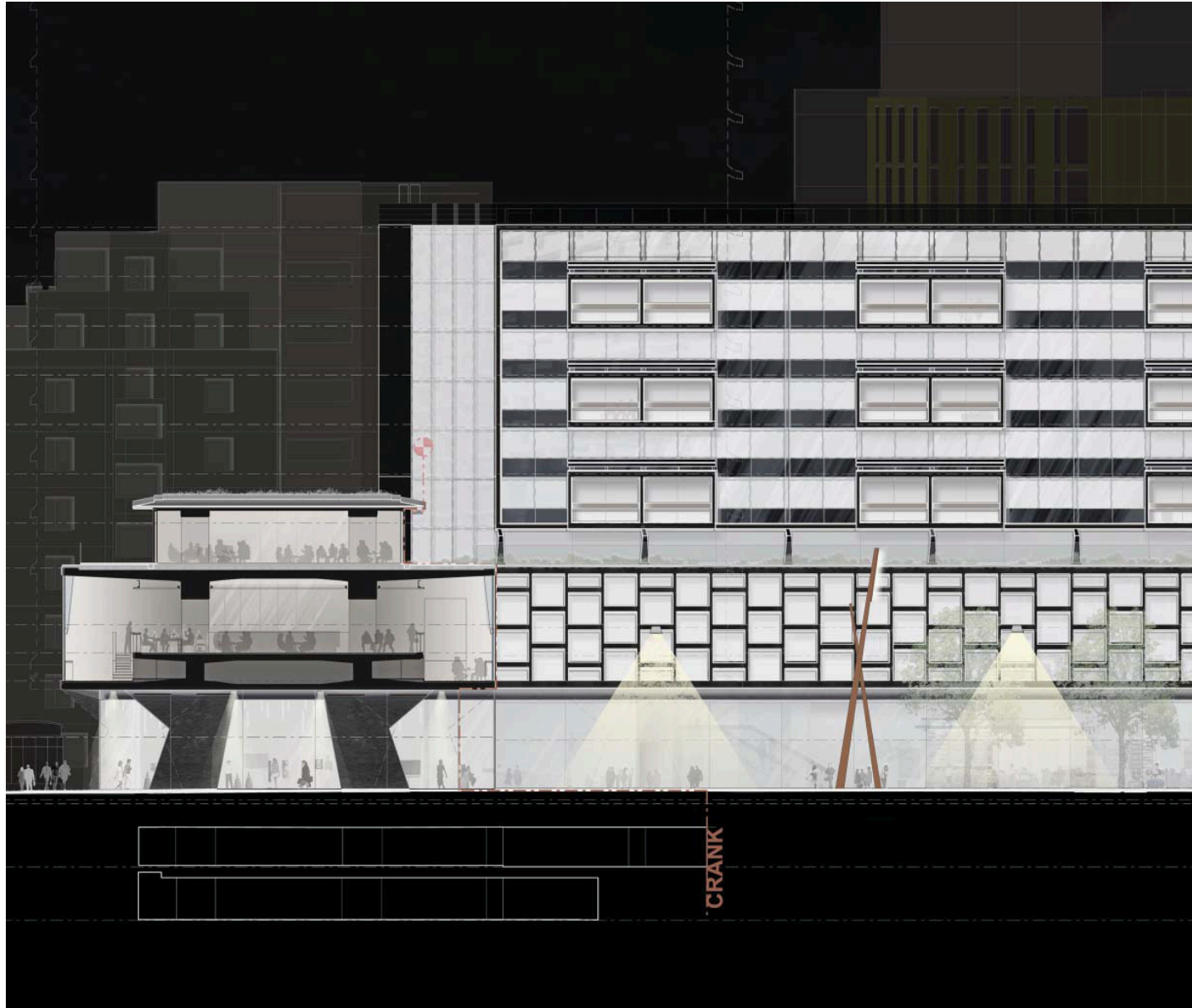
8.11 SECURITY & LIGHTING

The following is an appraisal of the Gillespies lighting proposals designed by Studio Fractal. Refer to Speirs + Major's Lighting Strategy - Section 9.0 for information about the new lighting proposals.

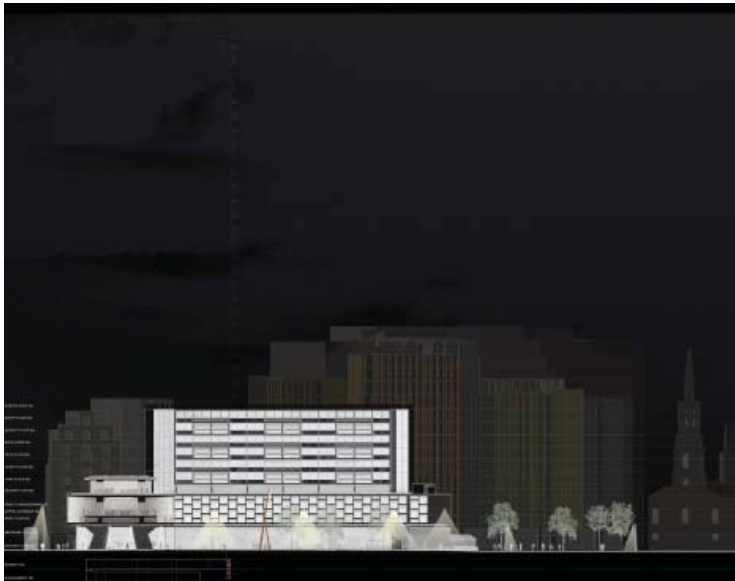
LUMINIAIRE KEY

- B1- 35W metal halide illuminated bollard
- C1 - 10m column with 140W Cosmopolis street lighting head @ 10m and 60W Cosmopolis street lighting head @ 6m
- C2 - 10m column with 10W Cosmopolis street lighting head @ 10m
- C4 - Feature column with 20W metal halide downlight and 3000K linear LED accent light
- C5 - Feature column with 20W metal halide downlight and 3000K linear LED accent light
- C6 - 6m column with 60W cosmo street lighting head
- D1 - Surface mounted 5W LED projector
- D2 - Surface mounted 20W metal halide downlight
- D3 - Wall mounted 20W metal halide downlight
- L1 - Surface mounted RGB LED wash light
- W1 - Wall mounted 140W Cosmopolis street lighting head
- W2 - Wall mounted 60W Cosmopolis street lighting head
- U1 - In-ground LED tree uplighter





The Gillespies lighting proposals include building mounted light fixtures onto the listed Centre Point complex



Elevations of the refurbished Centre Point illustrating the Gillespies lighting proposals

B1
Image

Dimensions

Refer to studiofractal detail drawings for site specific installation detail with central steel core

C1
Image

Dimensions

Street lighting head

C1 (CONT)

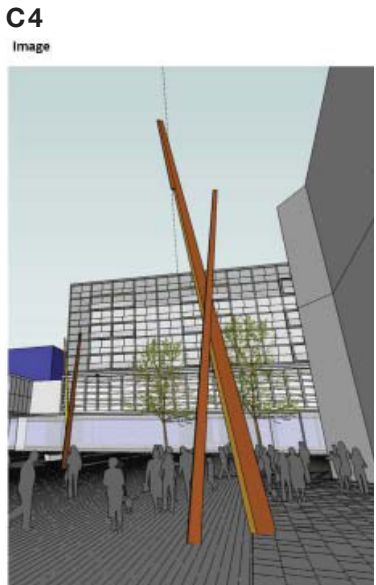
Refer to studiofractal detail drawings for site specific installation detail

C2
Image

Dimensions

C2 (CONT)

Refer to studiofractal detail drawings for site specific installation detail



C4 (CONT)

site specific installation detail



C5 (CONT)

Refer to studiofractal detail drawings for site specific installation detail

C7
Image

Dimensions

C7 (CONT)

D1
Image

Dimensions

D2
Image

Dimensions

D3
Image

Dimensions

L1
Image

Dimensions

CLVS and CRE2824 Bracket

U1
Image

Dimensions

D1 - 250mm
D2 - 270mm
H - 375mm

W1
Image

Dimensions

W2
Image

Dimensions

Fittings for the Gillespies lighting proposals