



Joint IM&T Structure

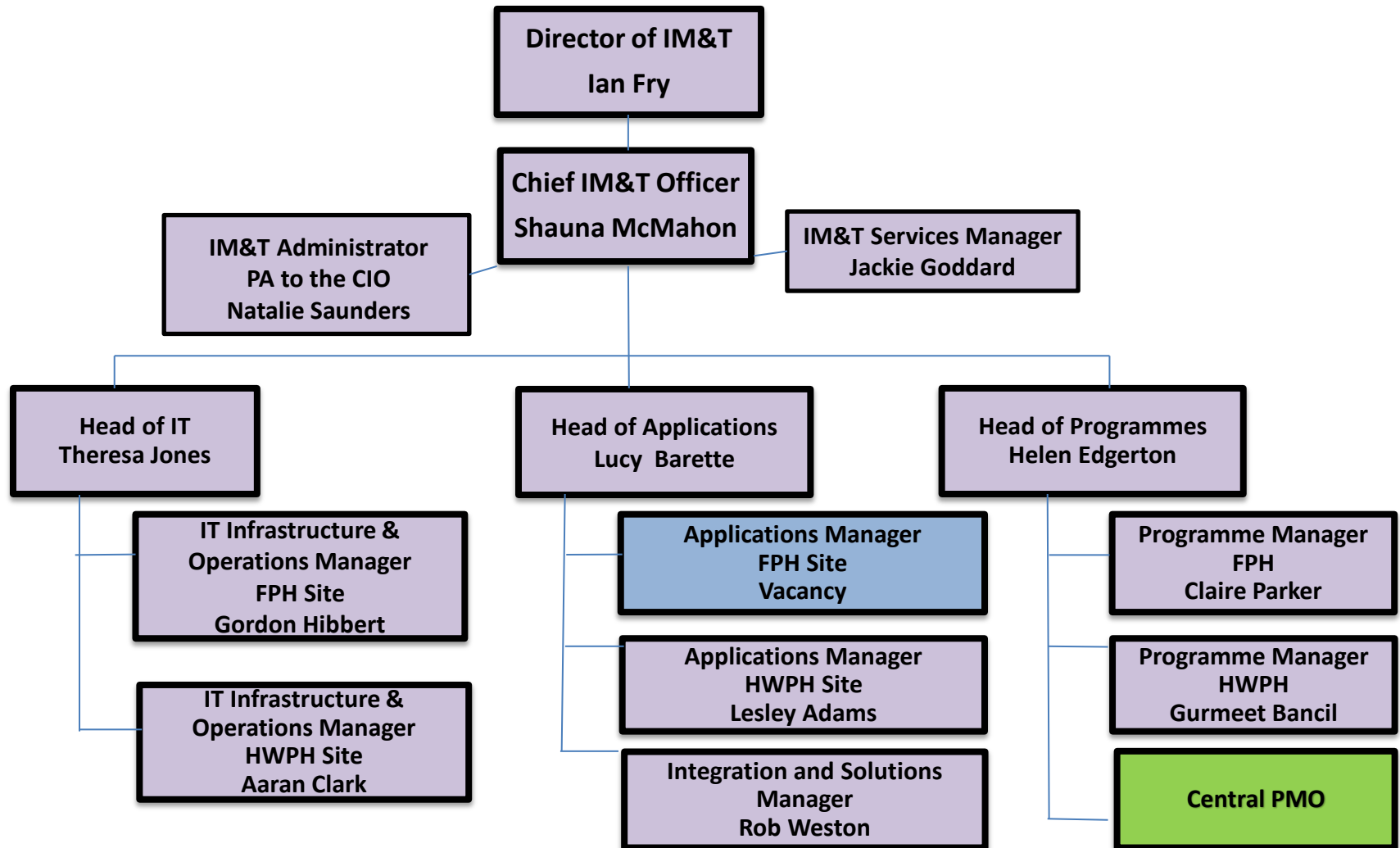
January 2017

Permanent and FTC roles

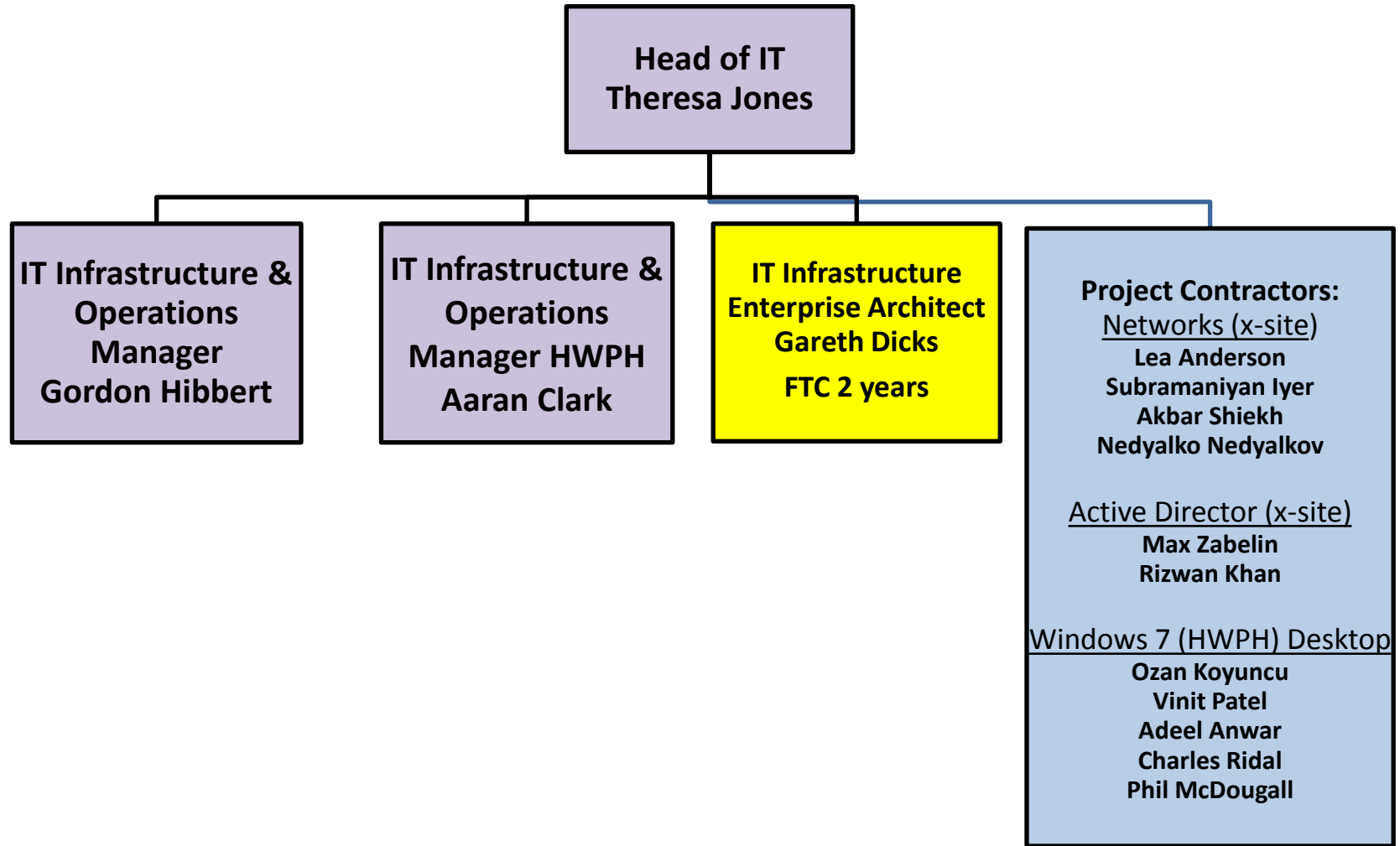
KEY OF COLOURED BOXES/NAMES

Purple Box	Filled Post
Blue Box	Unfilled or Vacant Post
Blue Box with Orange Writing	Vacant Post currently filled by Day Rate Contractor
Blue Box with Green Writing	One Year Fixed Term Contract Graduate Apprentice
Yellow Box	Fixed Term Contract Post

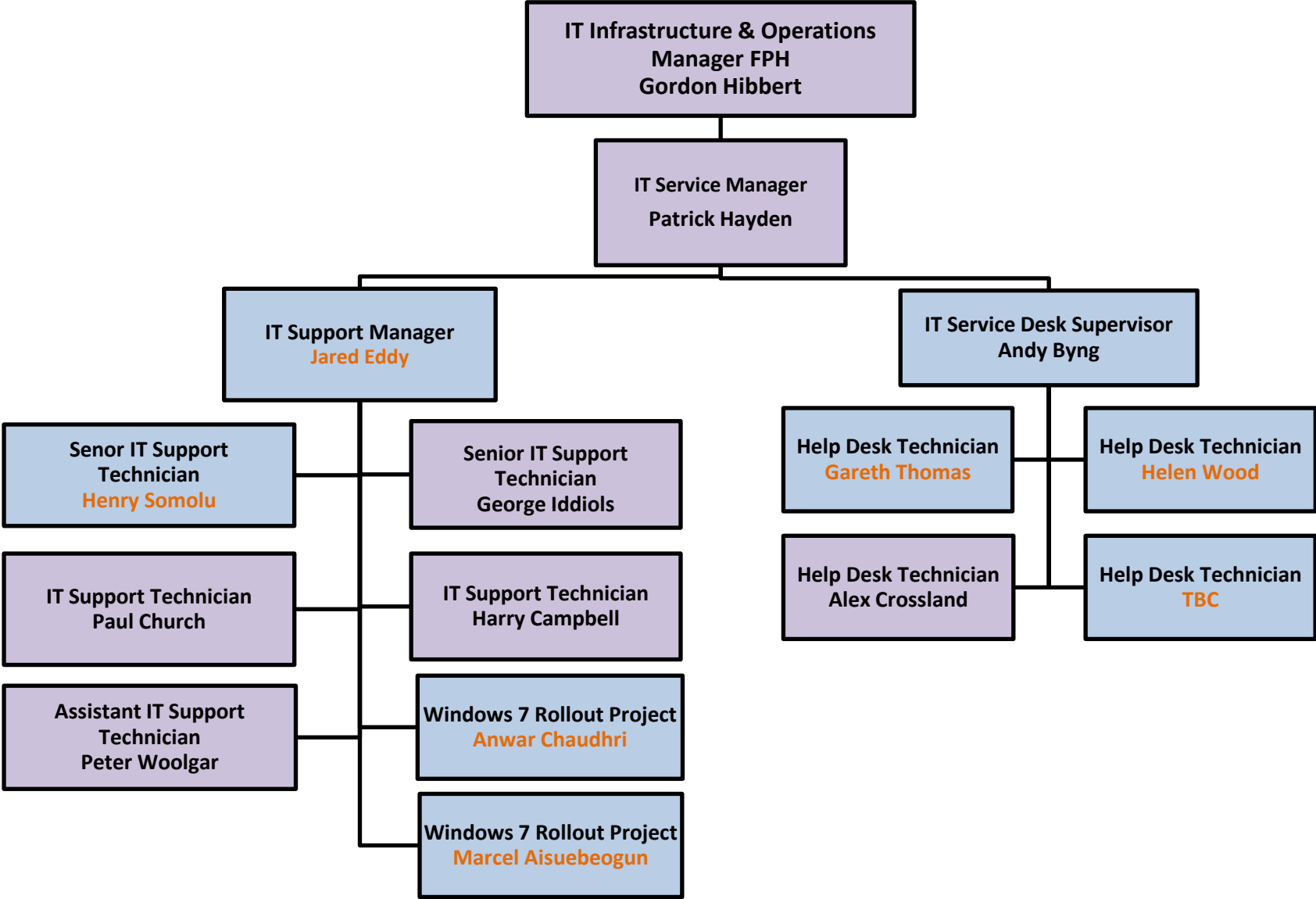
IM&T Department - Senior Managers



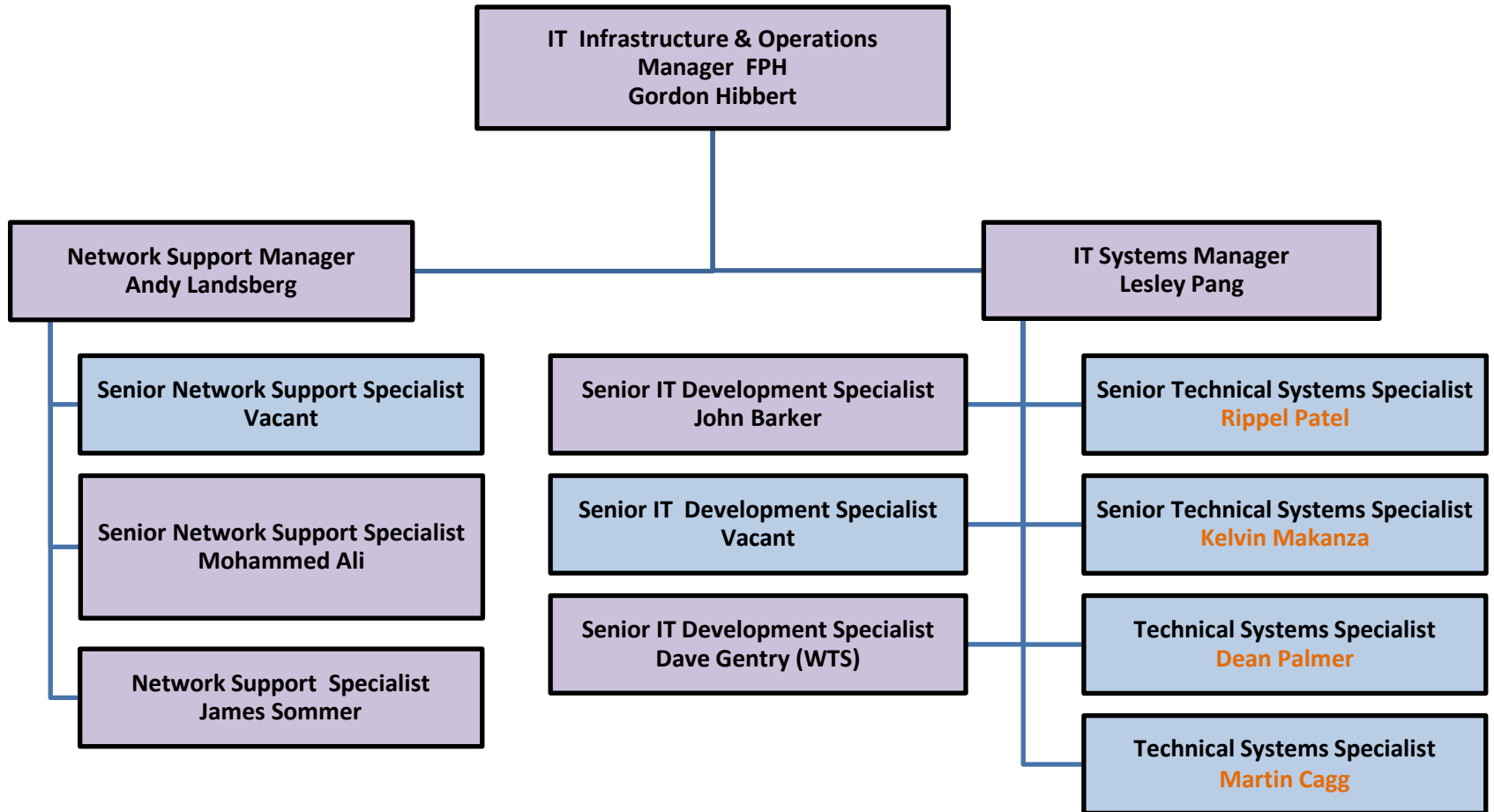
IT SERVICES INFRASTRUCTURE



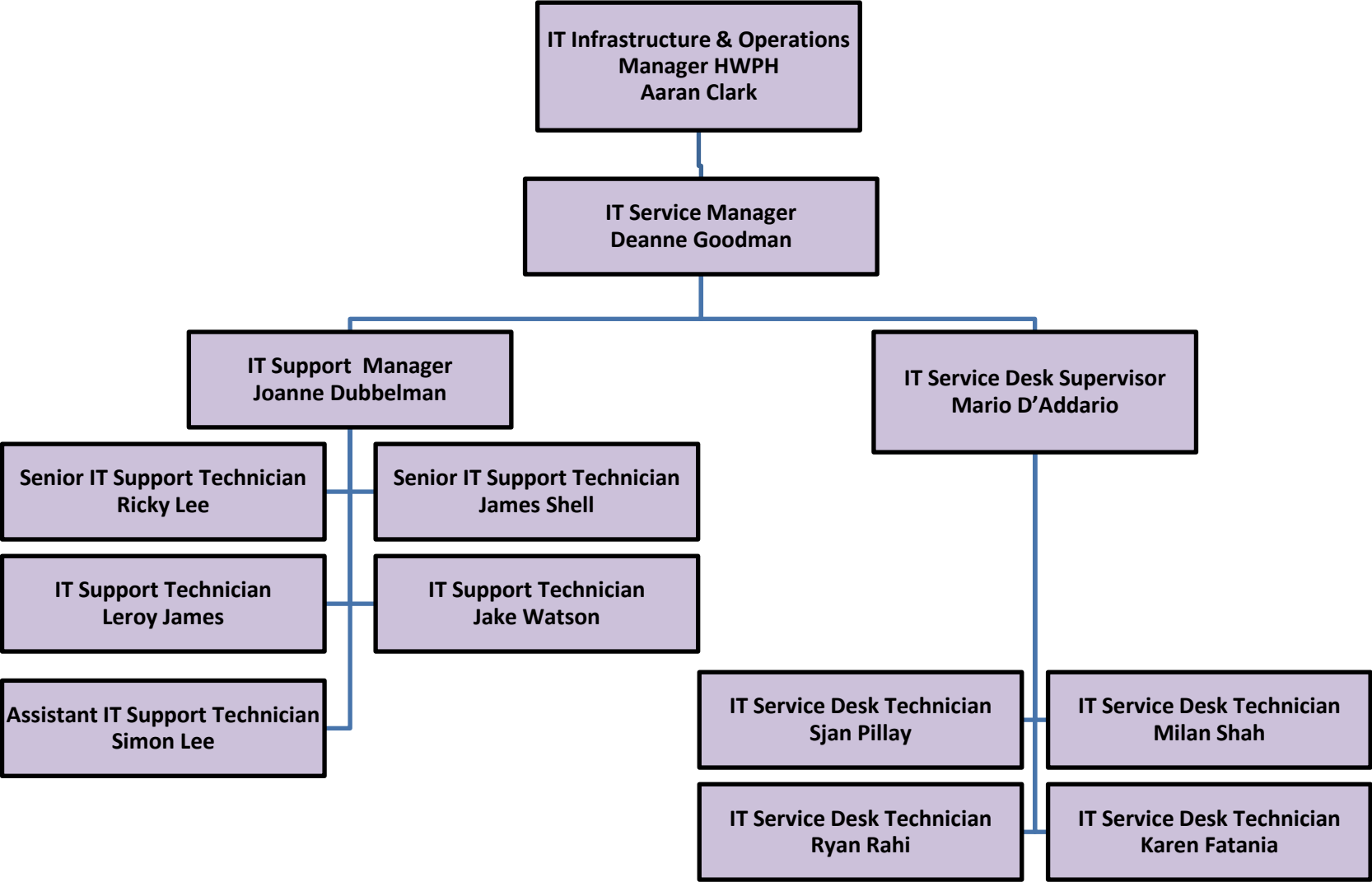
IT Services for FPH site – Part A – IT Service Management

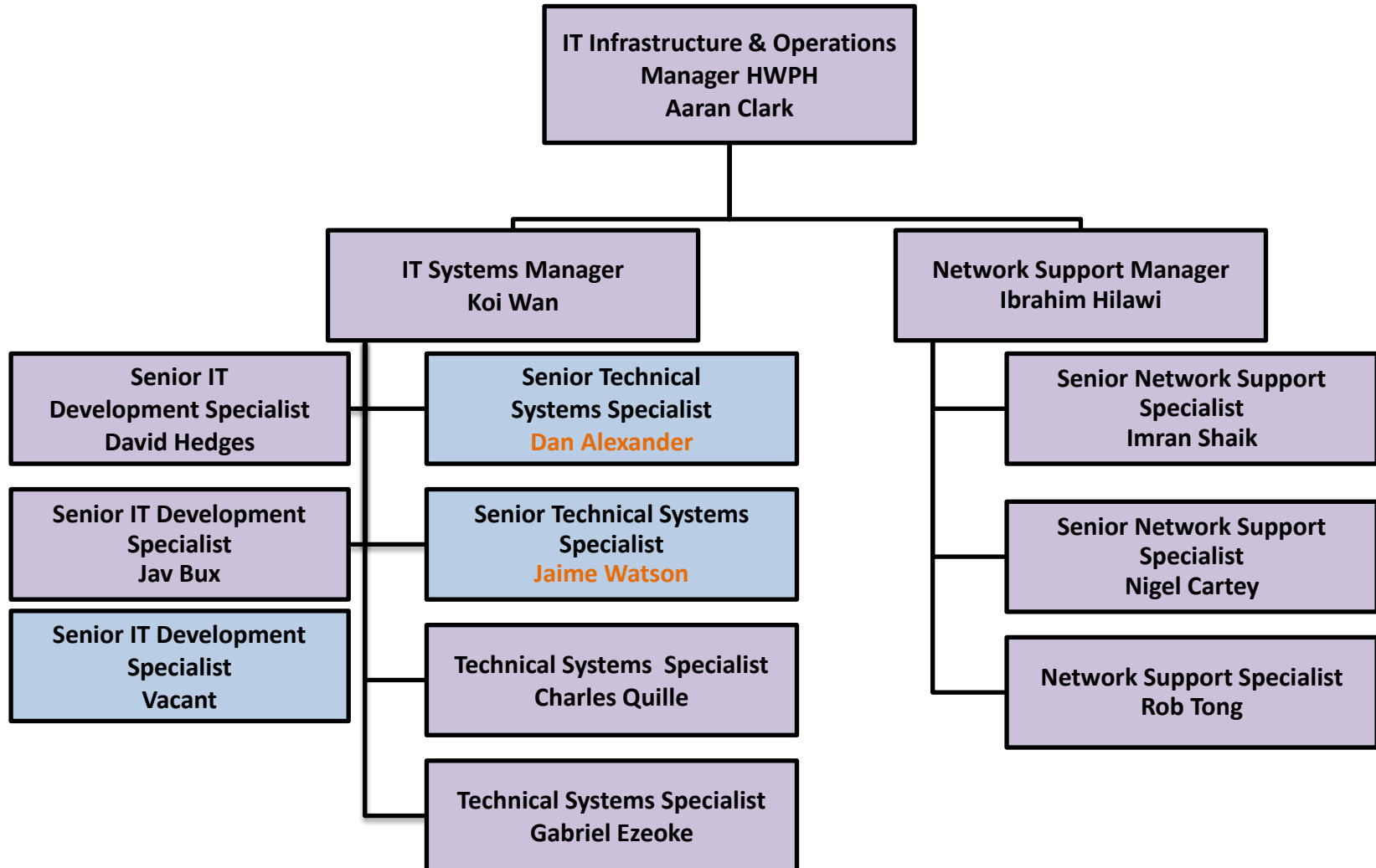


IT Services for FPH site – Part B



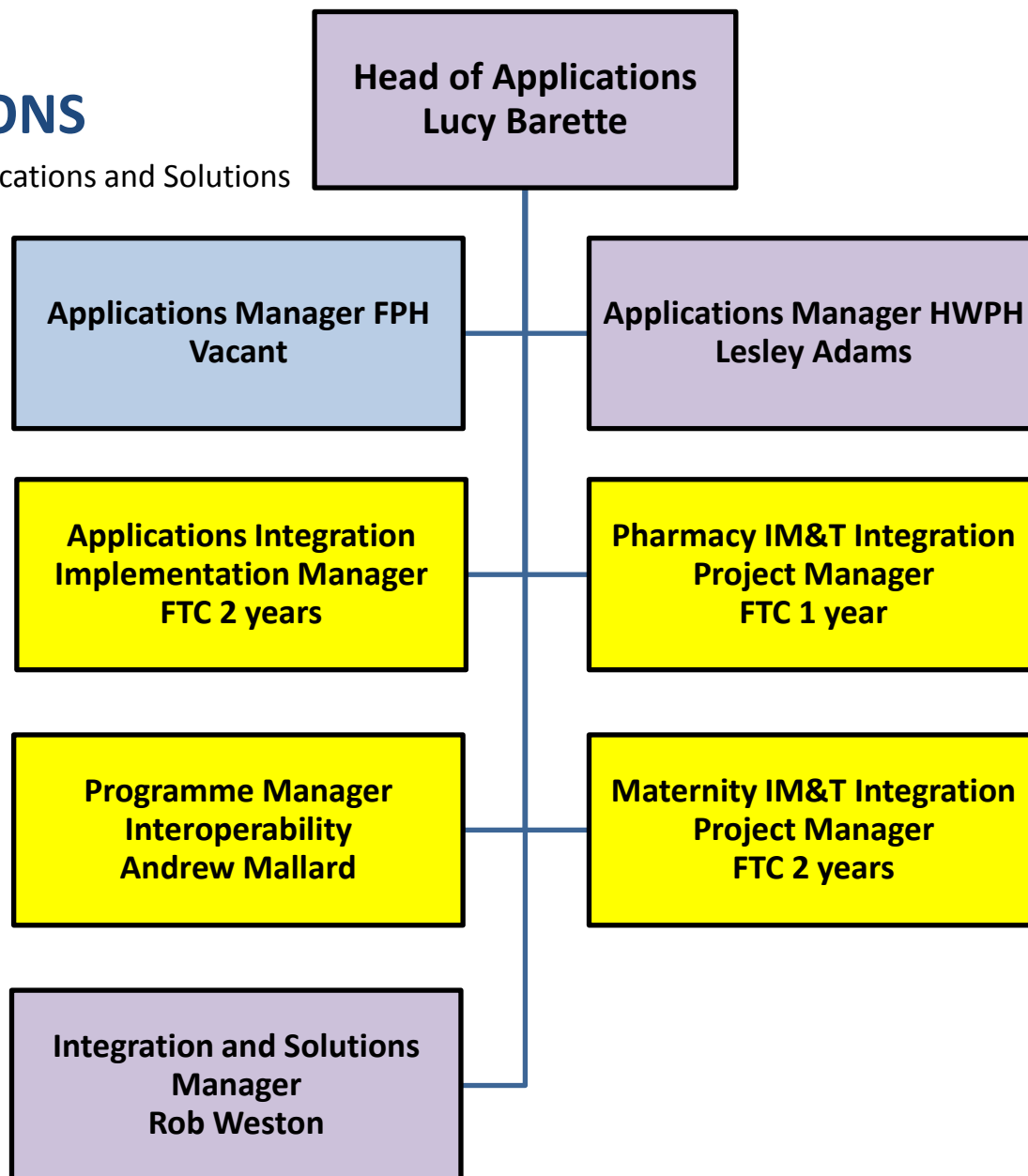
IT Services – HWPB sites - Part A – IT Service management



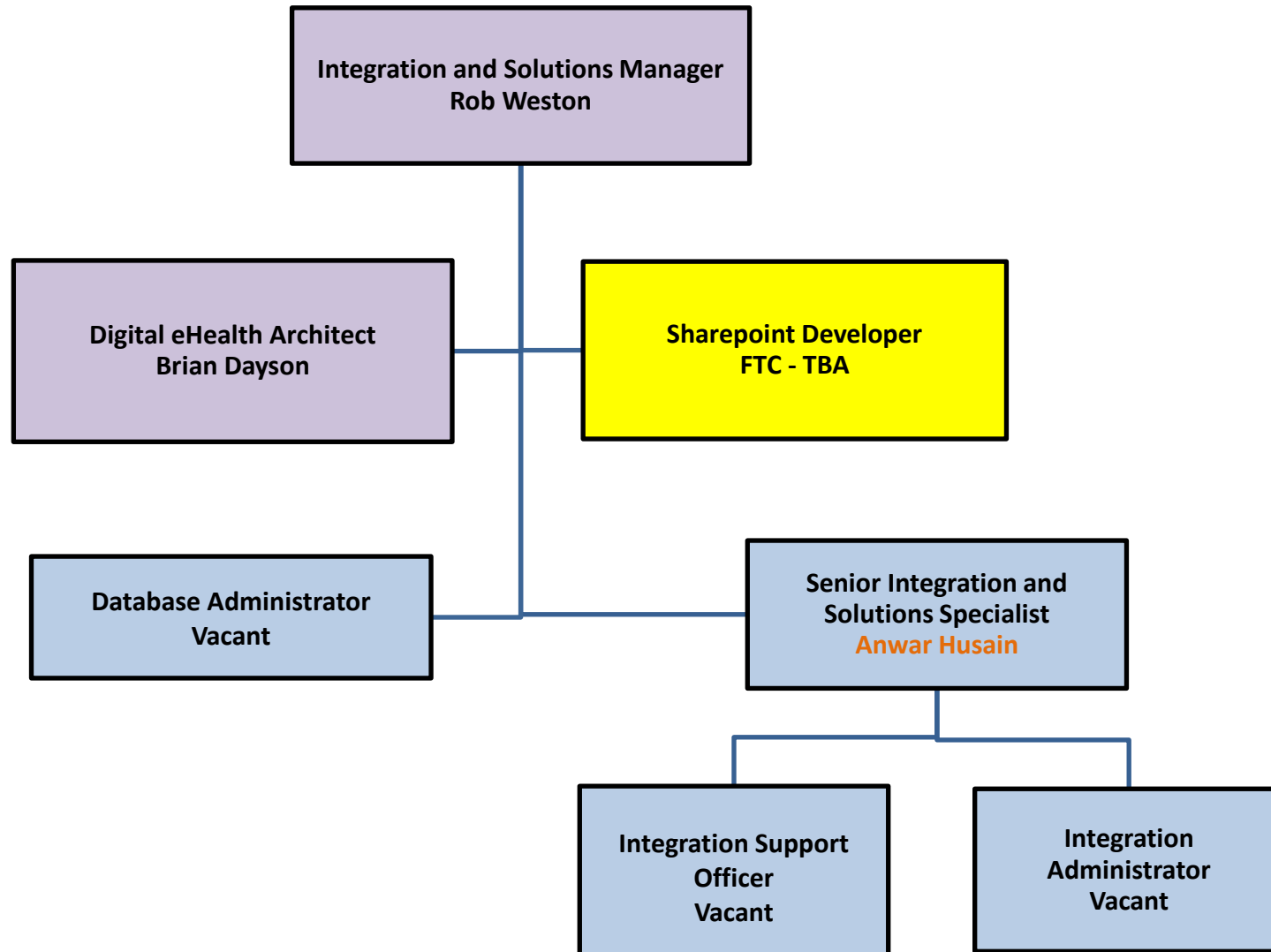


APPLICATIONS

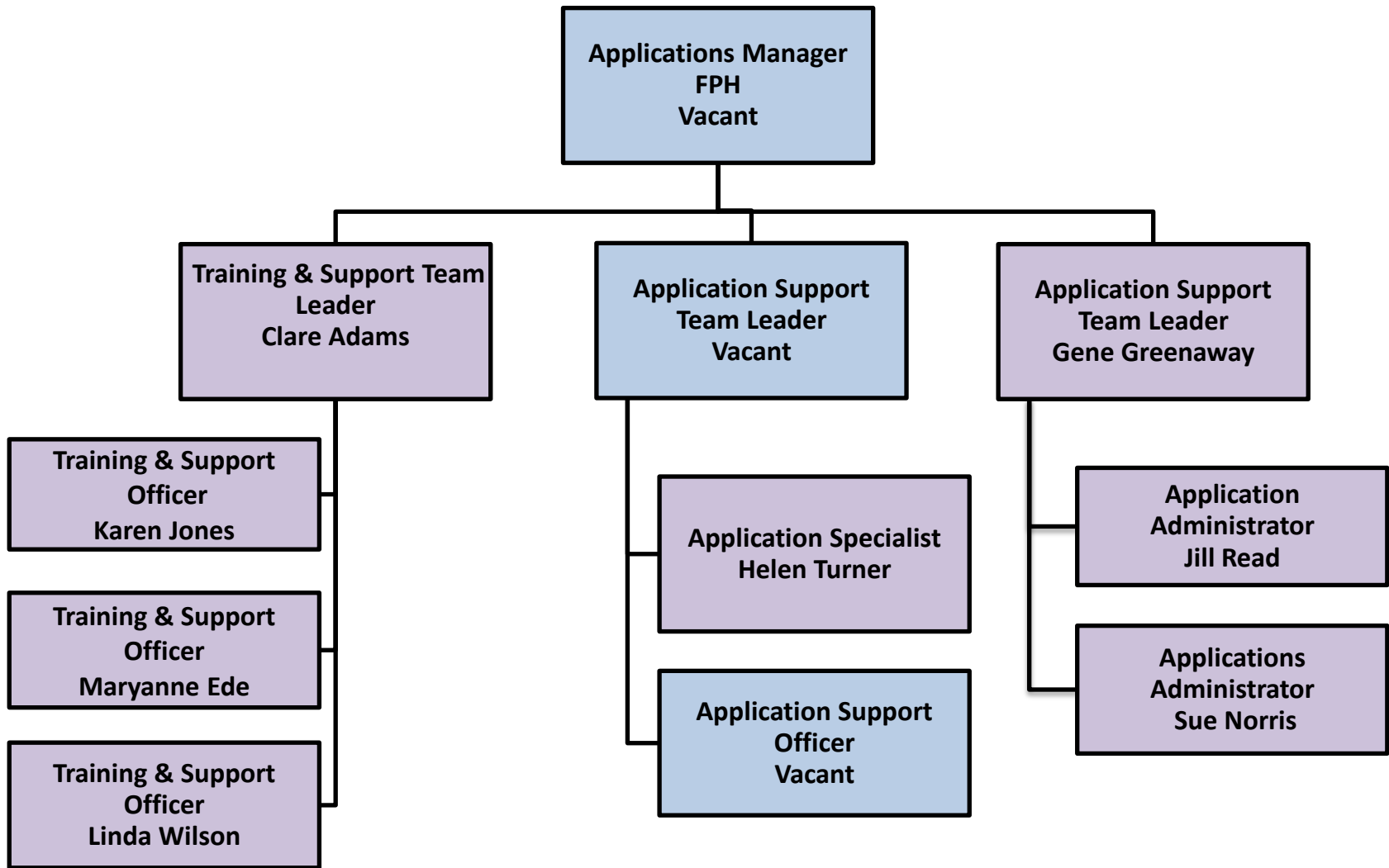
Senior Team – Applications and Solutions

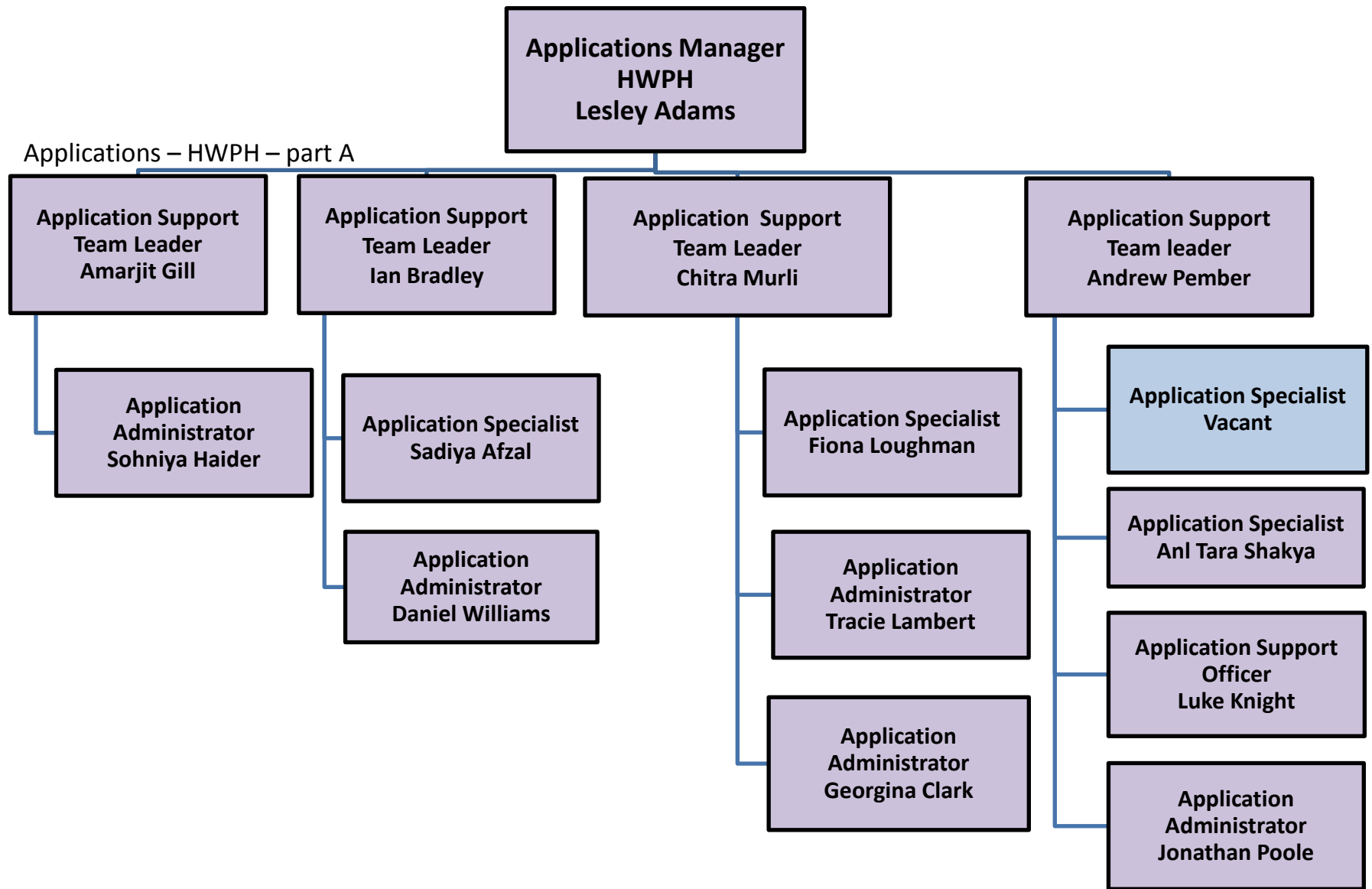


Integration and Solutions Team

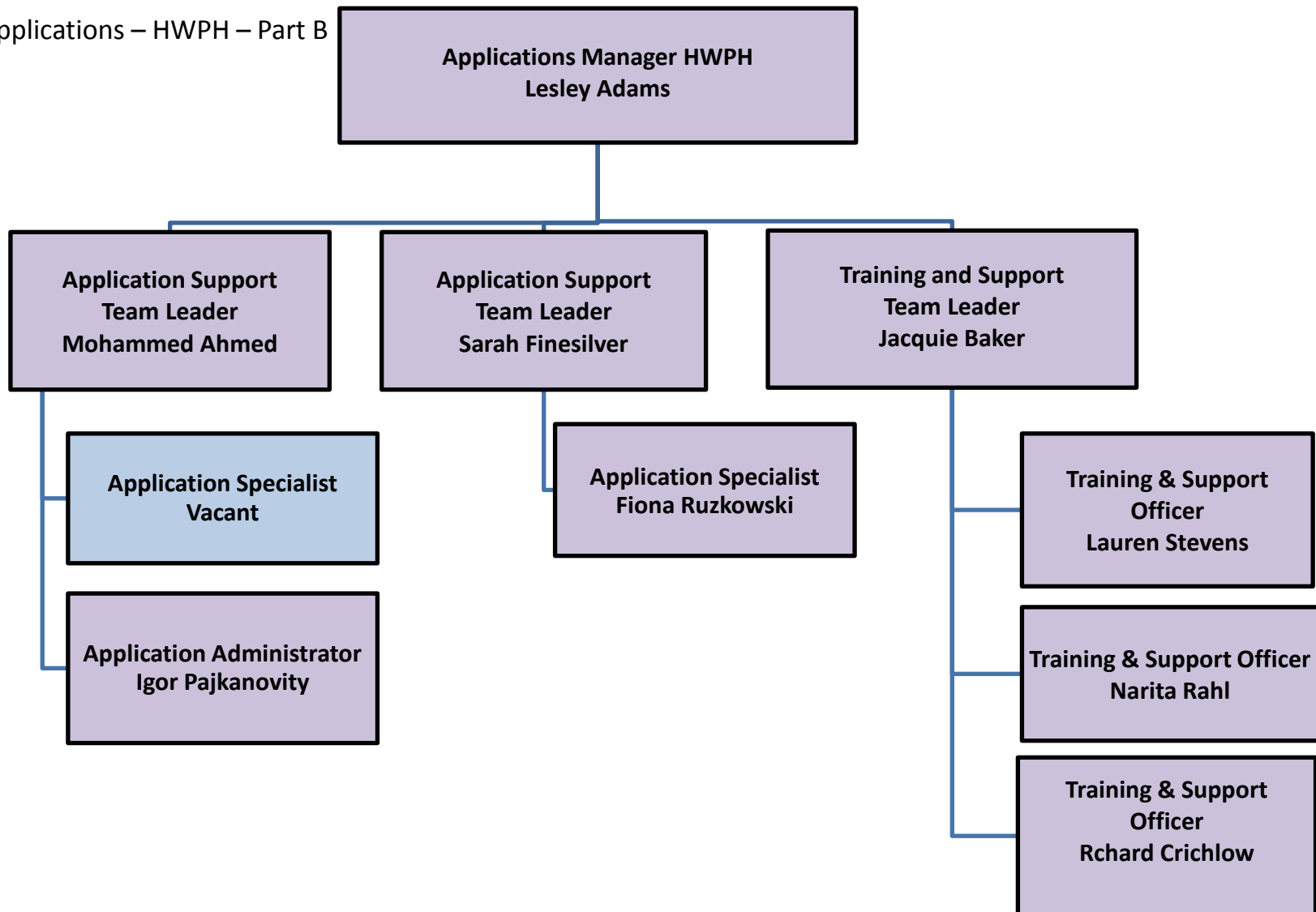


Applications - FPH



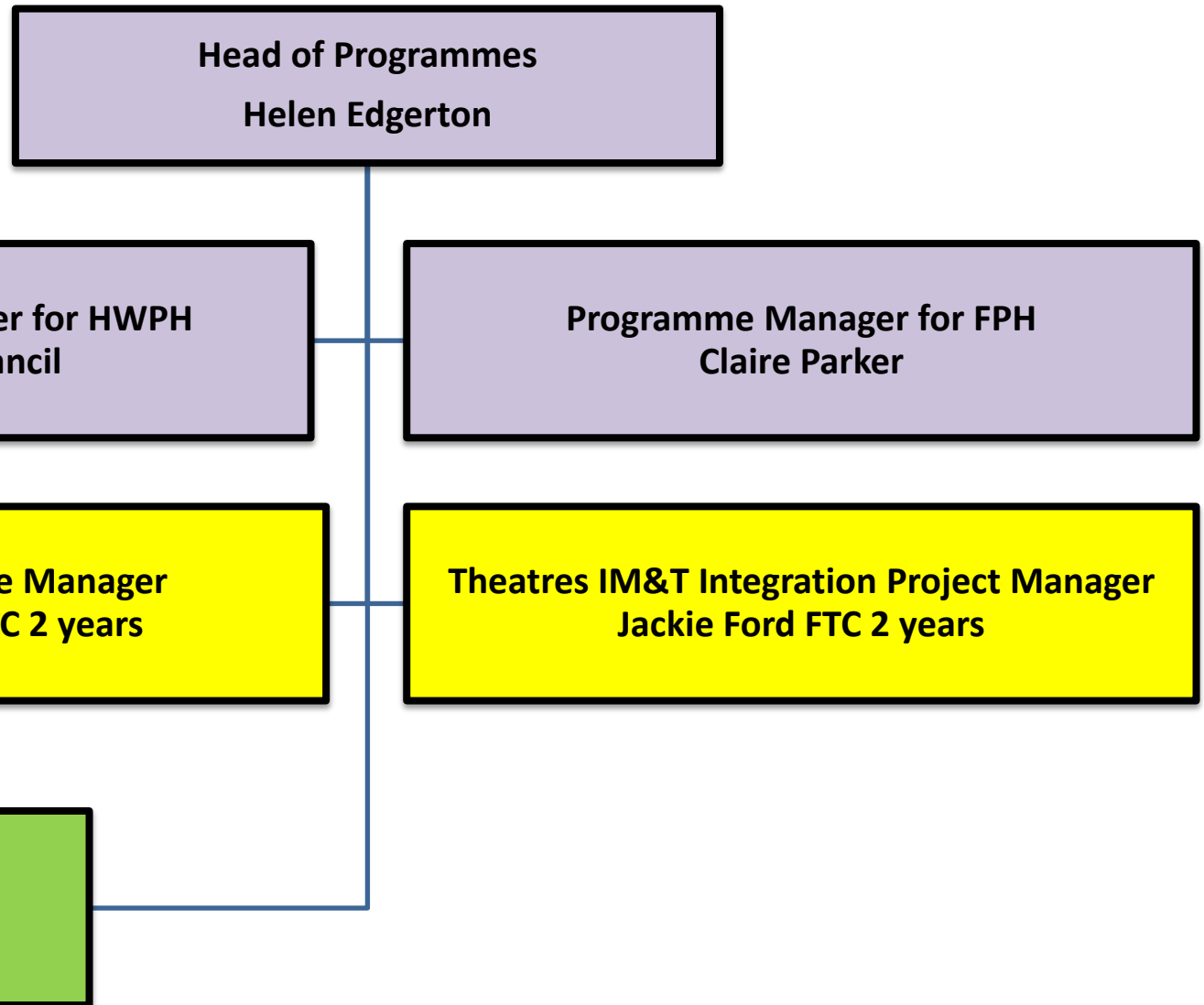


Applications – HWPB – Part B

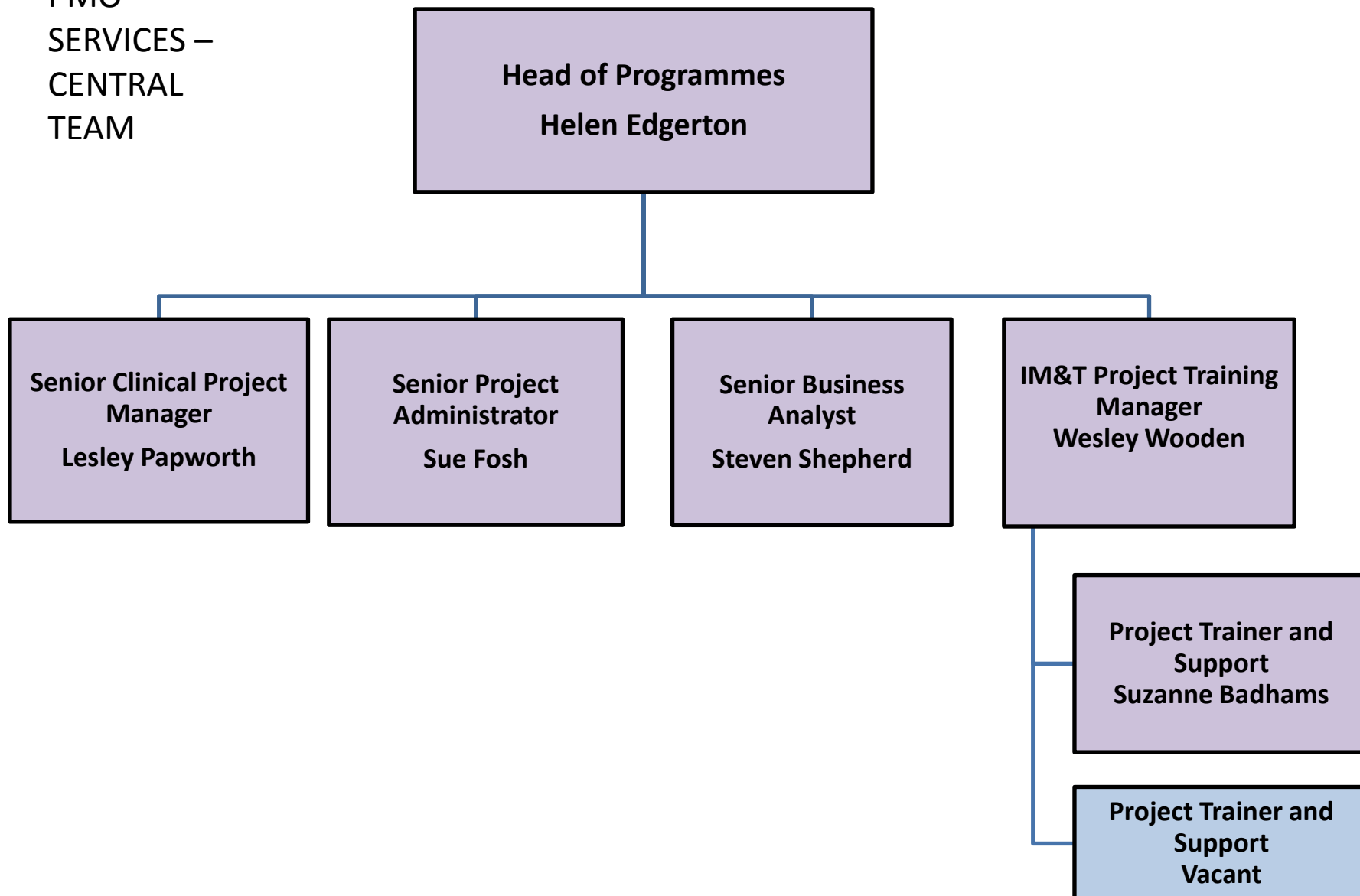


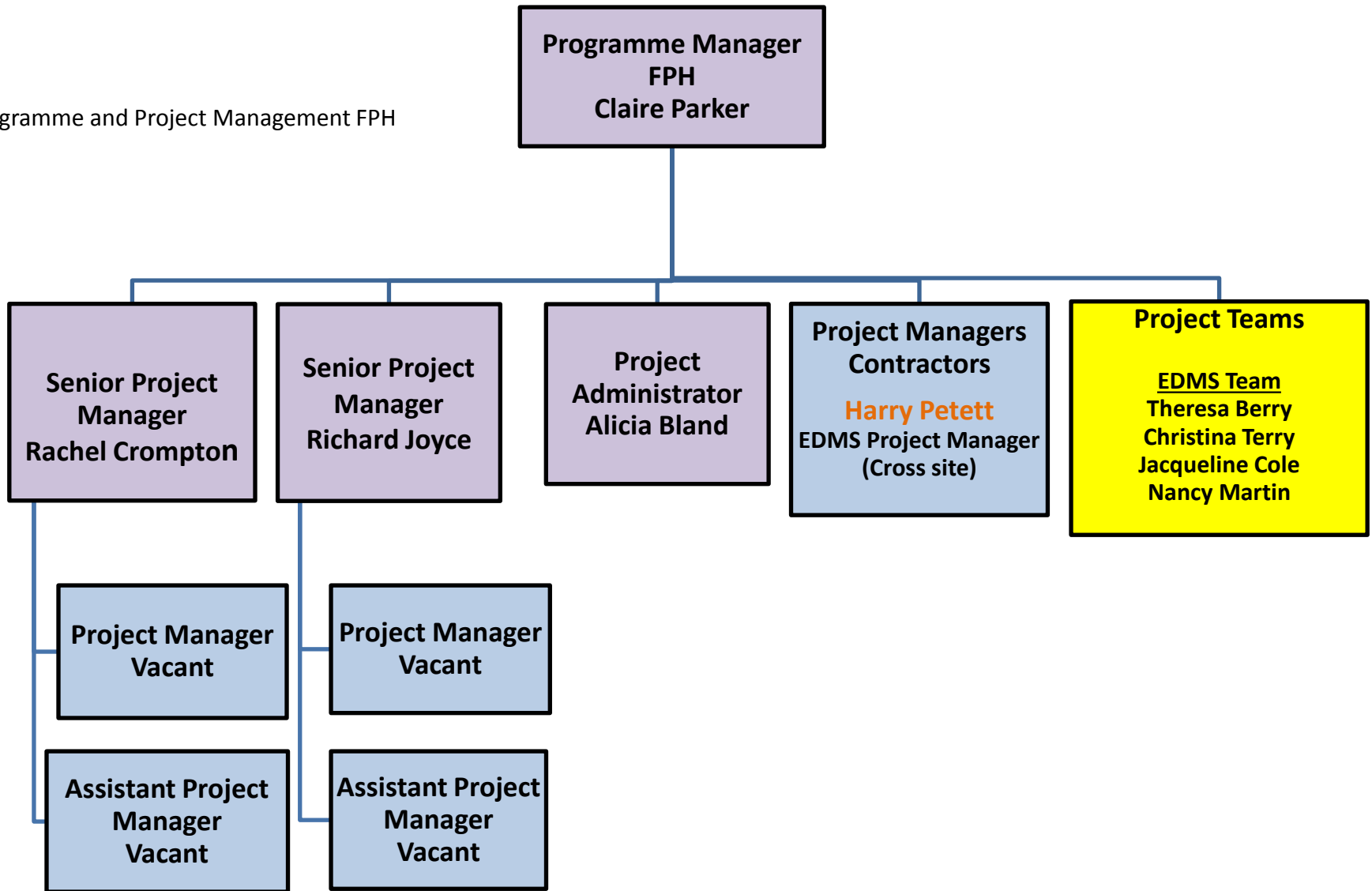
PROGRAMMES

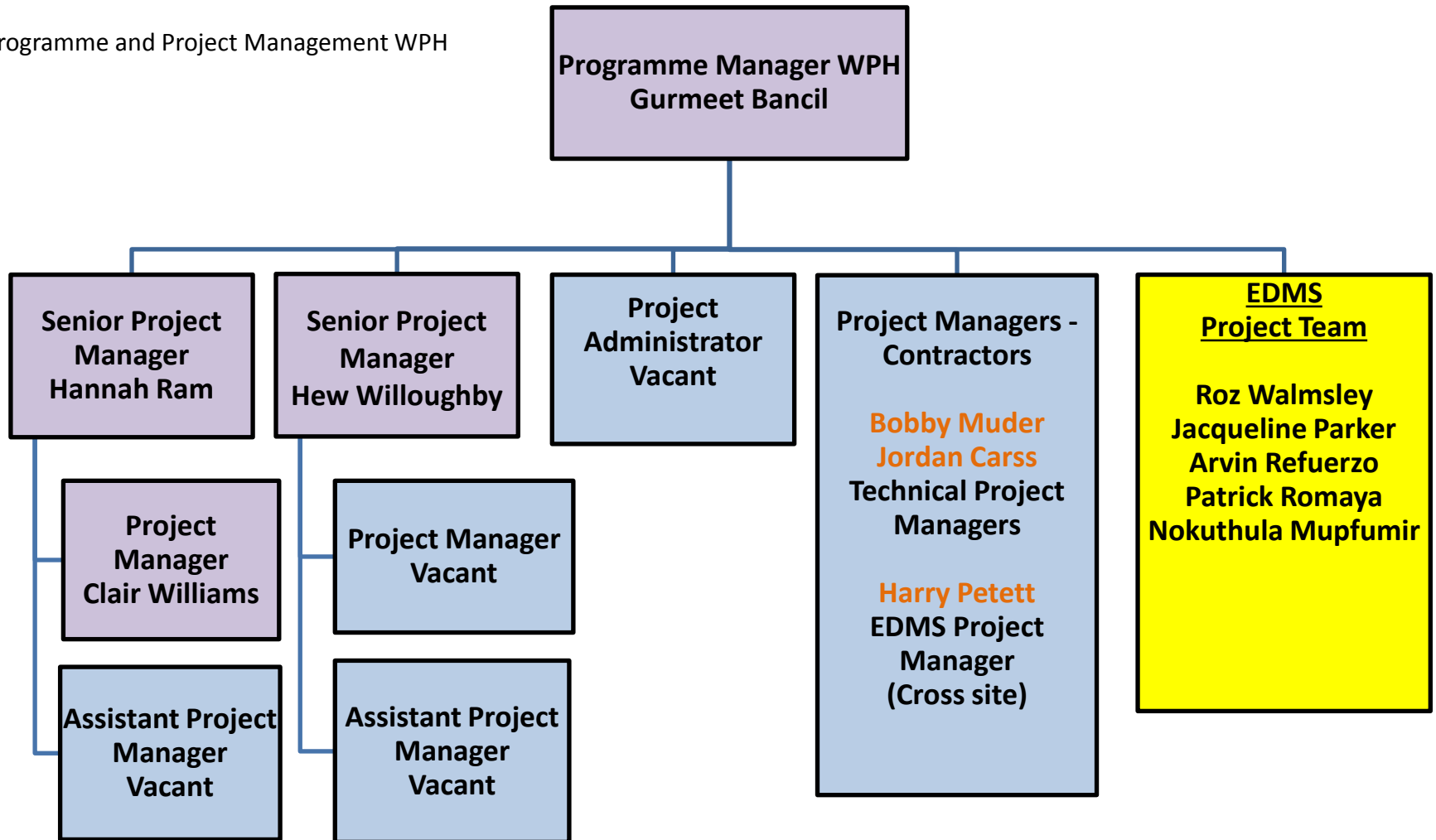
STRUCTURE FOR COMBINED
IM&T ORGANISATION
Top Team for Programmes



PMO
SERVICES –
CENTRAL
TEAM







IM&T SERVICES

