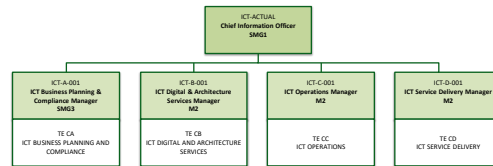
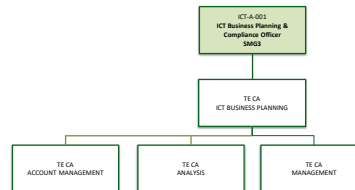


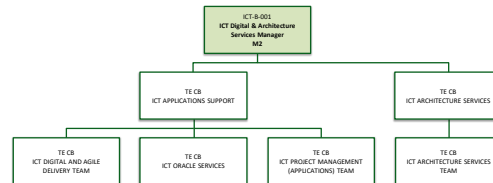
## TE C - ICT



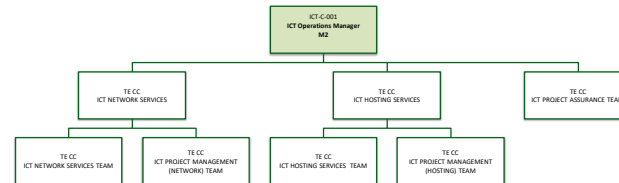
### TE CA - ICT BUSINESS PLANNING AND COMPLIANCE



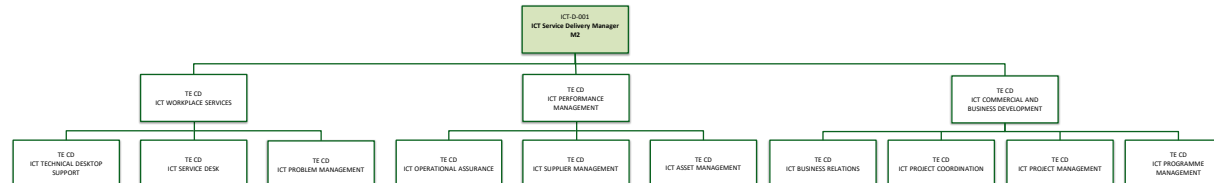
### TE CB - ICT DIGITAL AND ARCHITECTURE SERVICES



### TE CC - ICT OPERATIONS

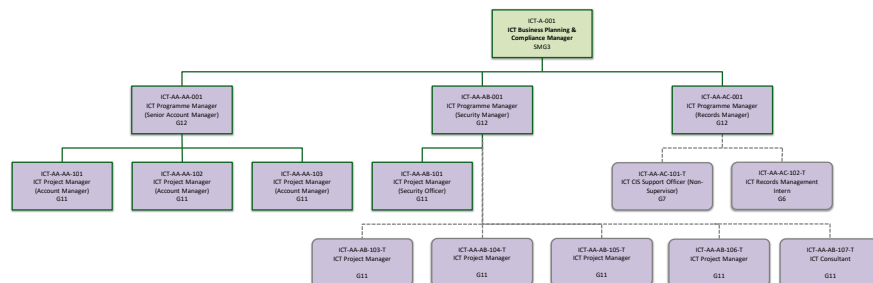


### TE CD - ICT SERVICE DELIVERY

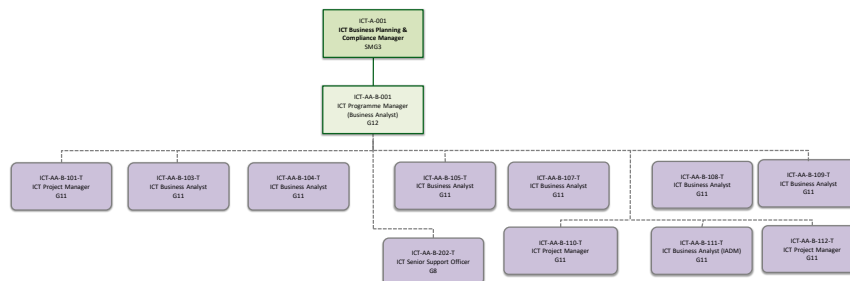


## TE CA - ICT BUSINESS PLANNING AND COMPLIANCE

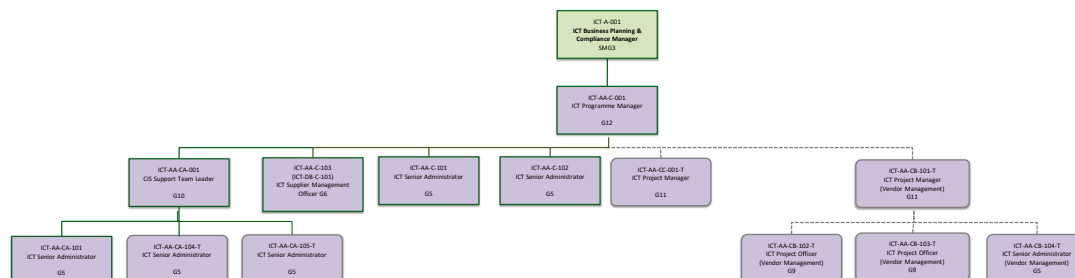
### TE CA - ICT BUSINESS PLANNING - ACCOUNT MANAGEMENT



### TE CA - ICT BUSINESS PLANNING - ANALYSIS



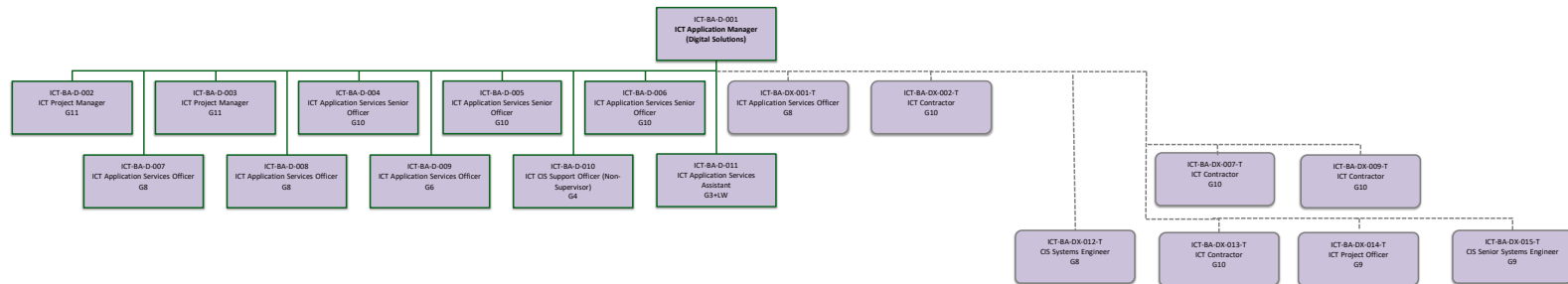
### TE CA - ICT BUSINESS PLANNING - MANAGEMENT



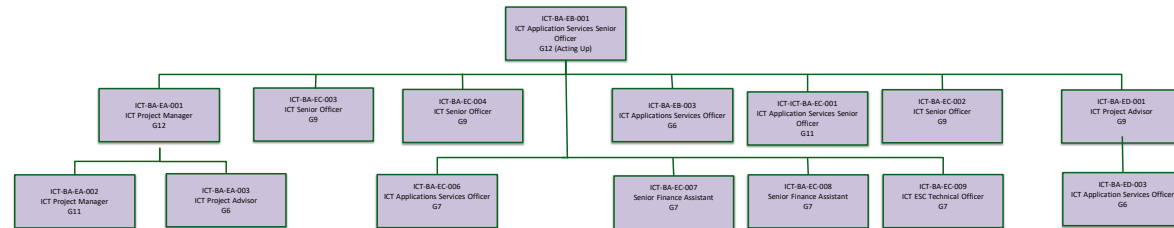


```

graph TD
    Root[ICT BA-A-001  
ICT Application Manager  
(Children & Adults)  
G12]
    
    Root --- BA_A_001[ICT BA-AA-001  
ICT Applications Services Officer  
G8]
    Root --- BA_A_002[ICT BA-AA-002  
ICT Application Services Officer  
G8]
    Root --- BA_A_003[ICT BA-AA-003  
ICT Application Services Officer  
G8]
    Root --- BA_A_004[ICT BA-AB-002  
ICT Application Services Officer  
G6]
    Root --- BA_A_005[ICT BA-AC-002  
ICT Applications Services Officer  
G8]
    Root --- BA_A_006[ICT BA-AD-001  
ICT Project Manager  
G11]
    Root --- BA_A_007[ICT BA-AD-002  
ICT Support Officer  
G6]
    Root --- BA_A_008[ICT BA-AF-002  
ICT Application Services Officer  
G6]
    Root --- BA_A_009[ICT BA-AF-001  
ICT Applications Services Senior  
Officer  
G8]
    Root --- BA_A_010[ICT BA-AG-001  
ICT Applications Services Senior  
Officer  
G8]
    Root --- BA_A_011[ICT BA-AG-003  
ICT Support Officer  
G6]
    
    Root --- BA_B_002[ICT BA-B-002  
ICT Application Manager  
(Housing, Environment &  
Transport)  
G12]
    
    Root --- BA_C_001[ICT BA-C-001  
ICT Application Manager (GIS,  
Planning & Regeneration)  
G12]
    
    BA_A_006 --- BA_A_007
    BA_A_009 --- BA_A_008
    
    BA_B_002 --- BA_B_003[ICT BA-CI-001  
ICT Project Manager  
G11]
    BA_B_002 --- BA_B_004[ICT BA-CE-002  
ICT Application Services Senior  
Officer  
G10]
    BA_B_002 --- BA_B_005[ICT BA-CE-003  
ICT Application Services Senior  
Officer  
G10]
    BA_B_002 --- BA_B_006[ICT BA-CI-004  
ICT Application Services Senior  
Officer  
G10]
    BA_B_002 --- BA_B_007[ICT BA-CE-005  
ICT Application Services Senior  
Officer  
G10]
    BA_B_002 --- BA_B_008[ICT BA-CE-006  
ICT Application Services Senior  
Officer  
G10]
    BA_B_002 --- BA_B_009[ICT BA-CE-007  
ICT Senior Support Officer  
G8]
    BA_B_002 --- BA_B_010[ICT BA-CE-008  
ICT Application Services Senior  
Officer  
G10]
    BA_B_002 --- BA_B_011[ICT BA-CE-009  
ICT Service Desk Officer  
G8]
    BA_B_002 --- BA_B_012[ICT BA-BC-001  
ICT Application Services Senior  
Officer  
(Business Intelligence)  
G10]
    BA_B_002 --- BA_B_013[ICT BA-RD-001-T  
ICT Project Officer  
G9]
    BA_B_002 --- BA_B_014[ICT BA-BE-001-T  
ICT Project Manager  
(Business Intelligence)  
G9]
    BA_B_002 --- BA_B_015[ICT BA-BG-001-T  
ICT Developer  
G8]
    BA_B_013 --- BA_B_016[ICT BA-BE-002-T  
ICT CS Support Team Leader  
G10]
    BA_B_014 --- BA_B_017[ICT BA-BE-003-T  
ICT Project Officer  
G6]
    
    BA_C_001 --- BA_C_002[ICT BA-CX-001  
ICT Project Manager  
G10]
    BA_C_001 --- BA_C_003[ICT BA-CI-001  
ICT Application Services Senior  
Officer  
G10]
    BA_C_001 --- BA_C_004[ICT BA-CI-002-T  
ICT Project Manager  
G10]
    BA_C_001 --- BA_C_005[ICT BA-CF-001  
ICT Application Services Officer  
G8 (FTE G.6)]
    BA_C_001 --- BA_C_006[ICT BA-CQ-002  
ICT Application Services Officer  
G8]
    BA_C_001 --- BA_C_007[ICT BA-CI-003  
ICT Application Services Officer  
G8]
    BA_C_001 --- BA_C_008[ICT BA-CJ-001  
ICT Application Services Officer  
G8]
    BA_C_001 --- BA_C_009[ICT BA-BA-001  
ICT Applications Services Senior  
Officer  
G10]
    BA_C_002 --- BA_C_010[ICT BA-CX-001  
ICT Application Services Officer  
G8]
    BA_C_003 --- BA_C_011[ICT BA-CL-001  
ICT Application Services Officer  
G8]
    BA_C_004 --- BA_C_012[ICT BA-CO-001-T  
ICT Application Services Officer  
G6]
    BA_C_005 --- BA_C_013[ICT BA-CP-001-T  
ICT Application Services Officer  
G8]
    BA_C_006 --- BA_C_014[ICT BA-CQ-001-T  
ICT Application Services Officer  
G8]
    BA_C_007 --- BA_C_015[ICT BA-CM-001-T  
ICT Project Manager  
G8]
    BA_C_008 --- BA_C_016[ICT BA-CD-001  
ICT Applications Services  
Assistant  
G3]
    BA_C_009 --- BA_C_017[ICT BA-BA-002  
ICT Application Services Officer  
(Applications)  
G8]
    BA_C_009 --- BA_C_018[ICT BA-BA-003  
ICT Application Services Officer  
(Applications)  
G8]
  
```

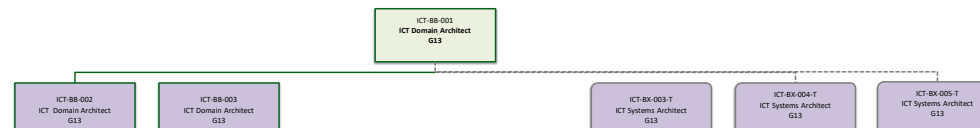


### TE CB - ORACLE SERVICES



## TE CB - ICT ARCHITECTURE SERVICES

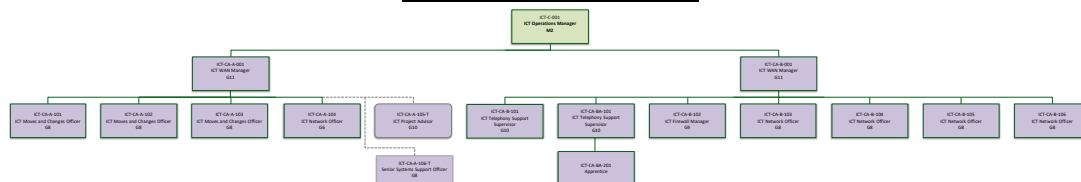
### TE CB - ICT ARCHITECTURE SERVICES TEAM



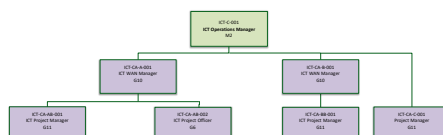
## TE CC - ICT OPERATIONS

## TE CC - ICT NETWORK SERVICES

**TE CC - ICT NETWORK SERVICES TEAM**

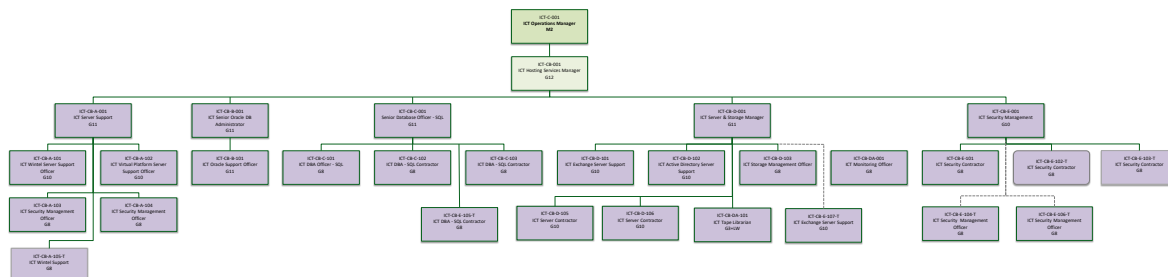


**TE CC - PROJECT MANAGEMENT (NETWORK)**

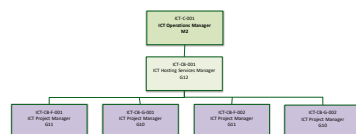


## TE CC - ICT HOSTING SERVICES

**TE CC - ICT HOSTING SERVICES TEAM**



**TE CC - ICT PROJECT MANAGEMENT (HOSTING)**



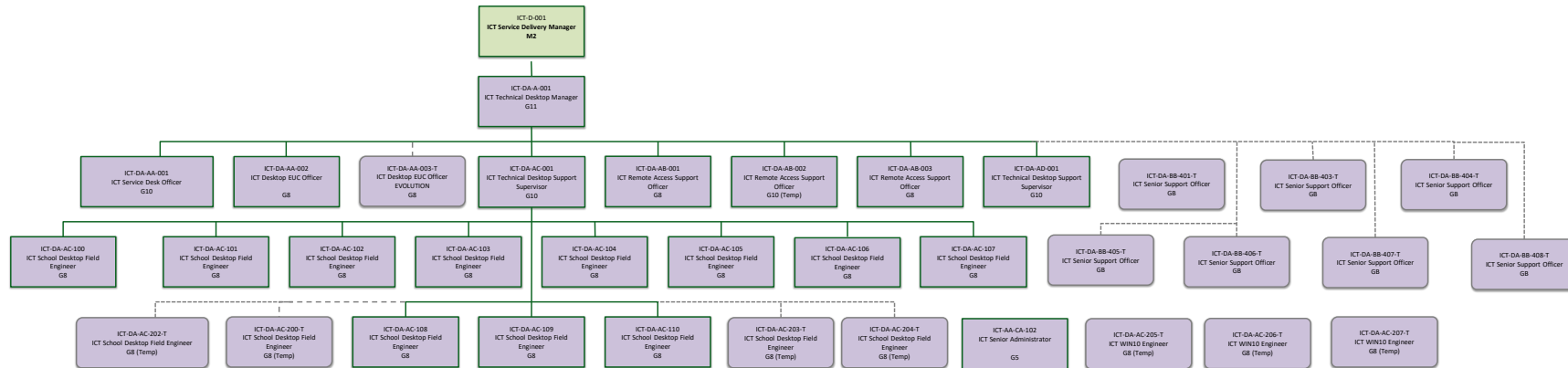
**TE CC - ICT PROJECT ASSURANCE TEAM**



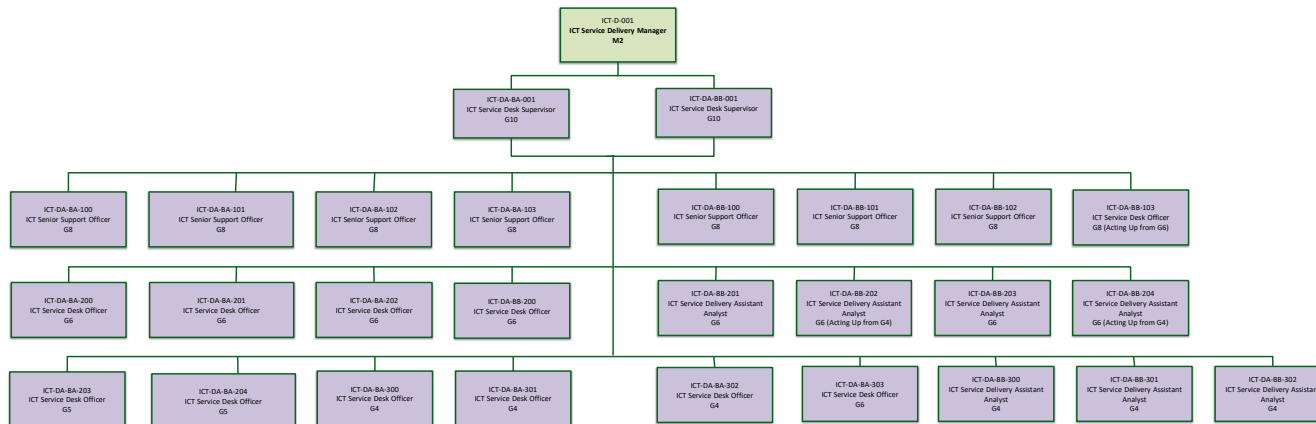
## TE CD - ICT SERVICE DELIVERY

### TE CD - ICT WORKPLACE SERVICES

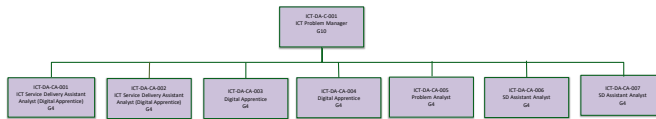
#### TE CD - TECHNICAL DESKTOP SUPPORT



#### TE CD - SERVICE DESK

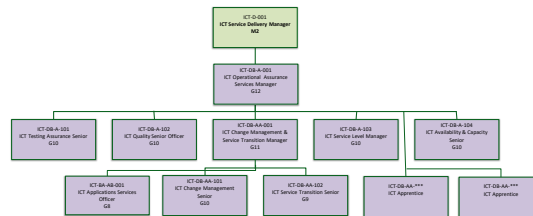


## TE CD - PROBLEM MANAGEMENT

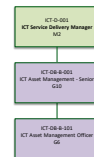


## TE CD - ICT PERFORMANCE MANAGEMENT

### TE CD - OPERATIONAL ASSURANCE

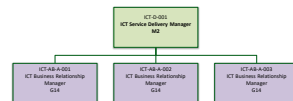


### TE CD - ASSET MANAGEMENT

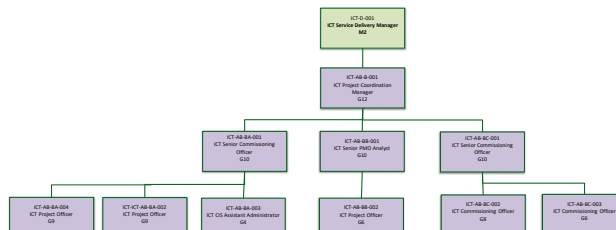


## TE CD - ICT COMMERCIAL AND BUSINESS DEVELOPMENT

### TE CD - BUSINESS RELATIONS

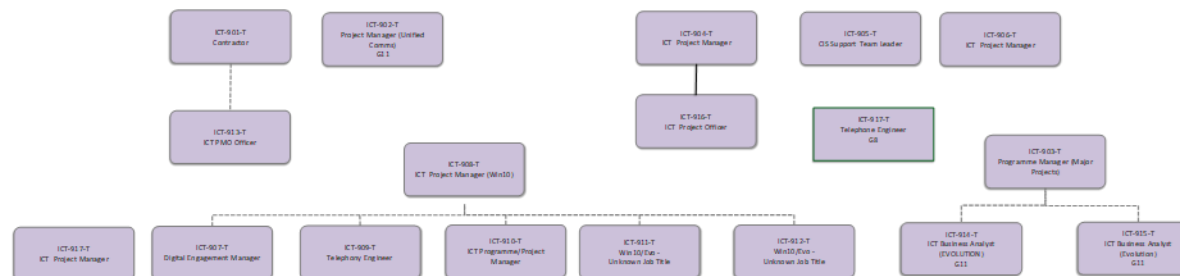


### TE CD - PROJECT CO-ORDINATION



## TL AA - ICT BUSINESS PLANNING SECTION

### TL - ICT INFRASTRUCTURE INVESTMENT PROGRAMME





## Pay Scales

- [Pay scales, grading, and pay policies \(cheshireeast.gov.uk\)](http://cheshireeast.gov.uk)
- Senior Manager's Pay Structure 2020

			20/21 SCP Value (Effective from 01.04.20)
Senior Manager	SMG1	7	£ 77,862
	SMG2	8	£ 72,300
	SMG3	9	£ 66,739
	SMG4	10	£ 61,177
Manager	M1	11	£ 64,515
	M2	12	£ 61,177
	M3	13	£ 58,953
	M4	14	£ 55,616
	M5	15	£ 53,391
	M6	16	N/A