

SCEG MEMBERS NETWORKS FOR CASCADING INFORMATION

GROUP OF EUROPEAN MARINE SITES CASCADE

Direct	Cascade
Carmarthen Bay & Estuaries Relevant Authorities Group (all RAs additional to CCW, EAW)	
CB&E contacts list – mixture of individuals and groups, organisations with interest in CB&E EMS	
Pembrokeshire Marine SAC officer	PM SAC RAG (all RAs additional to CCW, EAW)
	PM SAC liaison forum
	PM SAC website
Cardigan Bay SAC officer	CB SAC RAG (all RAs additional to CCW, EAW)
	CB SAC liaison forum
	CB SAC website
Severn Estuary SAC officer	SE SAC RAG (all RAs additional to CCW, EAW)
	SE SAC liaison forum
	SE SAC website
Pen Llyn a'r Sarnau SAC officer	PLAS SAC RAG (all RAs additional to CCW, EAW)
	PLAS SAC liaison forum
	PLAS SAC website
Menai Strait & Conwy Bay SAC officer (CCW)	
Can also cascade to:	
Skomer MNR officer	Skomer MNR advisory committee (see membership list at www.wmmc.org.uk/smnr_advctee.html)
UK MPA Centre (see www.ukmpas.org I am one of the two EMS reps)	Website
Seasearch (volunteer diving survey network)	Website
Milford Haven Waterway Surveillance Gp (mostly Pembrokeshire coastal industry)	
Other Pembrokeshire voluntary groups eg Neptunes's Army of Rubbish Collectors (www.narc-cc.org.uk)	Website
Keep Wales Tidy (Coastcare Gps)	

WELSH FEDERATION OF FISHERMENS ASSOCIATIONS LTD

Chair of WFFA and Cardigan Bay Fishermen's Association

Chair of Anglesey and North Wales Fishermen's Association

Chair of Llyn Fishermen's Association

President of above and Scallop Association Member

Llyn Pot Fishermen's Association

Cardigan Bay Fishermans Association Ltd';

Co-Ordinator of South and West Wales Fishermen's Association

Director of Shellfish Association of Great Britain

Andy Woolmer Welsh fisheries consultant

Chairman of New Under Tens Fishermen's Association

Mark Gray Seafish MPA person

Mussel Producer and Seafish Board Member

CEO of National Federation of Fishermen's Associations

Michel Kaiser Seafish board Member, Professor at Bangor Uni and leader with regard to seabed mapping

UK Scallop Dredging interests

Chairman of UK Fish Producers Organisation and South West scallopers

Chair of UK MPAS Coalition

Northern Ireland Producers Organisation

Isle of Man Producers Organisation

Scallop Association and large fish buyer

Fish buyer from NW England

Marine Stewardship Council representative

Mussel farmers north Wales

Cornish Fish Producers Organisation

Chair of Devon Sea Fisheries Committee and Shellfish Fishermen

Dr. Rob Blyth-Skyrme Fisheries consultant

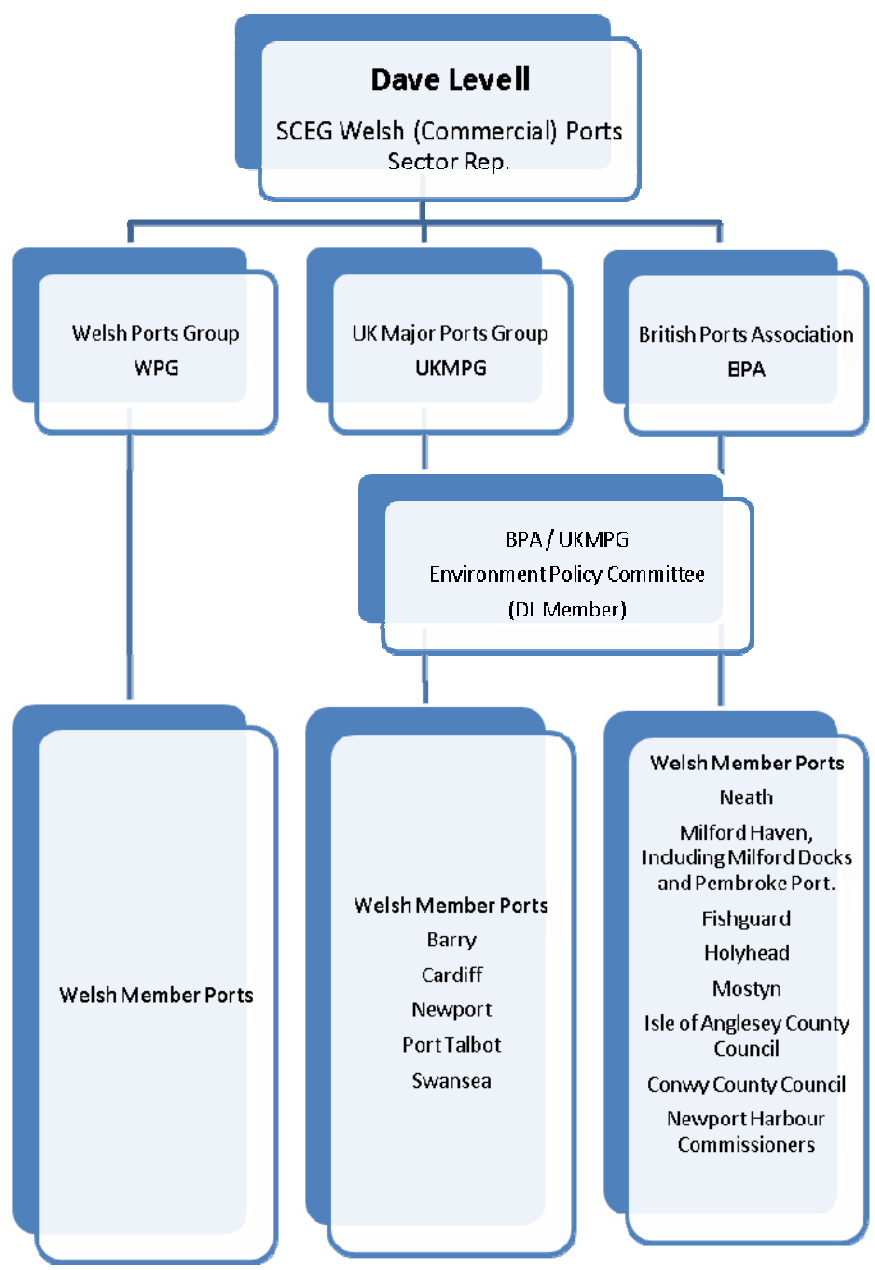
Phil Coates SWSFC

Stephen Atkins NWNWSFC

Welsh Aquaculture Producers Association

Scottish Fishermen's Federation

WELSH PORTS GROUP



UKMPG:ABP

Barry
Cardiff
Newport
Port Talbot
Swansea

BPA

Neath
Milford Haven, Including Milford
Docks and Pembroke Port.
Fishguard
Holyhead
Mostyn

Members List - Wales**Conwy County Council**

Harbour Office
The Quay
Conwy
Gwynedd
LL32 8BB
Tel:01492 596 253
Fax:01492 585 222
<http://www.conwy.gov.uk>

Isle of Anglesey County Council

County Council Offices
Llangefni
Anglesey
LL77 7TW
Tel:01248 752 331
Fax:01248 724 839
<http://www.anglesey.gov.uk/english/council/highways/martime.htm>

Milford Haven Port Authority

Gorsewood Drive
Milford Haven
Pembrokeshire
SA73 3ER
Tel:01646 696 100
Fax:01646 696 125
<http://www.mhpa.co.uk>

Neath Harbour Commissioners

Bankside
The Green
Neath
West Glamorgan

SA11 1RY

Tel:01639 633 486

Fax:01639 631 040

Newport Harbour Commissioners

24 Bridge Street
Newport
NP9 4SF

Tel:01633 265 702

Fax:01633 258 431

Stena Line Ports Fishguard

Fishguard Harbour
Goodwick
Pembrokeshire
SA64 0BU
Tel:01348 404 404
Fax:01348 404 446
<http://www.stenaline ferries.org/>

Stena Line Ports Holyhead

Port of Holyhead
Stena House
Station Approach
Holyhead
Gwynedd
LL65 1DQ
Tel:01407 606 666
Fax:01407 606 604
<http://www.stenaline.com>

Stena Line Ports Ltd

Stena Line Ports Ltd
Stena House
Holyhead
Gwynedd
LL65 1DQ
Tel:01407 606 688
Fax:01407 606 620
<http://www.stenaline ferries.org/>

WALES TOURISM ALLIANCE

Association of Welsh Agents
BHA (WTA Board Member)
British Holiday and Home Parks Association (WTA Board Member)
Caravan Club
Camping & Caravanning Club
Carmarthenshire TA
Cardiff & Co.
Churches Tourism Network Wales
Farm Stay Wales
Federation of Small Businesses
Mid Wales Tourism
North Wales Tourism (WTA Board Member)
Small Serviced Sector Forum
SE Wales Tourism Forum
SW Wales Tas
Tourism Training Centre of Excellence
WATO
Welsh Historic Houses
WAVA (WTA Board Member)
WASCO

ENVIRONMENT AGENCY WALES STAKEHOLDER NETWORK

Account management is a process that allows us to actively manage Environment Agency Wales' relationship with key stakeholder groups or organisations to achieve specific objectives. Account Management makes sure that:

- We achieve our objectives
- Key stakeholders have a single point of contact in the Agency
- Communications between the Agency and key stakeholders are clear and consistent and information flows more effectively through both organisations

Everyone understands and follows the processes for dealing with different types of communications

Our customers are those individuals and organisations that use its services (whether they pay for the services or not). These will include citizens, students, businesses, charities and other Government departments and agencies. Customers are a stakeholder group.

Stakeholders are defined as Individuals or groups who are (or could become) interested in, involved in or affected by the Agency's policies, activities or outcomes. This may be a

direct interest (e.g. the owner of a property at risk of flooding) or indirect (e.g. an MP may only become interested if something 'goes wrong' for one of their constituents).

Principal Stakeholder Contacts for EAW

- Welsh Assembly Government
- Assembly Government Sponsored Bodies
- NGOs
- Academic/Research Organisations
- Agriculture & Rural Land Management Organisations
- Local Government
- Fishing/Conservation/Recreation Organisations
- Business & Industry
- Navigation Organisations
- Water Industry
- Mining and Quarrying Organisations
- AMs/MPs/MEPs

EAW Committees

Fisheries, Ecology & Recreation Advisory Committee (FERAC). FERAC has 21 members consisting of those stakeholders with key interests in Fisheries, Conservation, & Navigation.

FERAC provides advice to EAW on the following:

- the performance of the Agency in Wales with regard to fisheries, ecology, recreation or navigation matters
- issues of concern in relation to fisheries, ecology, recreation or navigation within Wales
- the implications for Wales of policy proposals for fisheries, ecology, recreation or navigation

Environment Protection Advisory Committee (EPAC)

EPAC membership consists of 21 members covering all EAW's regulatory functions and advises Environment Agency Wales on how to carry out its environmental protection and resource management work. This could be through responses to consultations or general advice on the business, approach or priorities in Wales.

Flood Risk Management Wales

The Flood Risk Management Committee is an executive committee that delivers flood risk management in Wales.

There are 18 members; 8 appointed by Welsh Assembly Government, 8 appointed by WLGA and 2 appointed by Environment Agency Wales.

Water Framework Directive Committee

The Water Framework Directive WFD Committee is made up of members from EPAC, FERAC & FRMW. It advises EAW on our approach to implementing and delivering WFD priorities in relation to national policy proposals or general advice on the business, approach or priorities affecting Wales.

Western Wales Liaison Panel

The Western Wales Liaison Panel consists of 15 members (approx) based around our key co-deliverers and stakeholders from the Western Wales River Basin District. These are the organisations who worked with us during the consultation for the draft River Basin Management Plan and who are responsible for carrying out actions.

Dee Liaison Panel

The Dee Liaison Panel consists of 15 members (approx) based around our key co-deliverers and stakeholders from the Dee River Basin District. These are the organisations who worked with us during the consultation for the draft River Basin Management Plan and who are responsible for carrying out actions.



Introduction

Wales Environment Link is a network of environmental and countryside Non-Governmental Organisations in Wales, most of whom have an all-Wales remit. WEL is officially designated the intermediary body between the government and the environmental NGO sector in Wales. Its vision is to increase the effectiveness of the environmental sector in its ability to protect and improve the environment through facilitating and articulating the voice of the sector. As an umbrella body WEL helps represent the shared interests of its 30 member organisations.

WEL encourages joint working and information sharing throughout the network. WEL staff administer 22 email groups to disseminate information to staff of member organisations. There are several Working Groups, providing members' staff with the chance to get together to work on different topics. Members also meet on an ad hoc basis to form Task & Finish Groups to work on urgent or immediate issues deemed important by the network. The Task & Finish Groups and long-term Working Groups often work together to make joint consultation responses and statements on strategies and policies of key importance to the environmental voluntary sector.

The WEL network is often invited to elect representatives to attend meetings and partnerships. WEL Staff offer members the chance to bid for places on new fora and when

there is more than one volunteer a vote takes place amongst the members to determine who they feel would best represent the interests of the network on the particular group in question. Representatives report back to the network regularly and collate agreed views to take to forth-coming meetings. WEL currently has representatives sitting on more than 40 partnerships (mostly national partnerships/committees of the Welsh Assembly Government) which focus on a variety of environment-related topics*.

WEL also organises two meetings a year for representatives of the network to discuss issues with the Minister for Environment, Sustainability and Housing, the Minister for Rural Affairs and the Chief Executives of the three environmental statutory bodies: CCW, EAW and FCW.

Membership

Any environmental NGO working nationally within Wales whose principle purpose is complementary to the charitable objects of WEL is welcome to apply for membership.

Full Membership is not open to environmental organisations unable to demonstrate independence from government or commercial interests in its decision making (i.e. those which are hosted and managed by government or its agencies, or operate solely as a 'for profit' organisation).

Full members can participate in Council decisions, nominate individuals to the Management Committee, participate in any Working Group or email group, contribute to and endorse collectively agreed statements of WEL and be endorsed by working groups or Council to represent the network on committees and fora. They may also attend WEL's ministerial meetings and meetings with the Chief Executives of ASPBs.

NGOs who do not seek to influence national debate or policy on environmental matters, but wish to benefit from the services and information WEL provides, and are also established for purposes complementary to WEL's charitable objects, may apply for associate membership.

Members pay an annual subscription fee towards the costs of running the network.

Wales Environment Link unites voluntary bodies whose primary aims include the conservation, protection or quiet enjoyment of landscape, wildlife or amenity in Wales

Mae Cyswilt Amgylchedd Cymru yn uno cyrff gwirfoddol sydd â'u hamcanion pennaf yn cynnwys cadwraeth, gwarchodaeth neu fwynhad tawel o dirlun, bywyd gwyllt ac amwynder yng Nghymru

Reg. Charity No: 1022675 Rhif Elusen Gofrestredig: 1022675

WEL's member organisations include:

Full Members (22)

- British Mountaineering Council
- BTCV - British Trust for Conservation Volunteers Cymru
- Butterfly Conservation
- Campaign for National Parks
- Coed Cadw/Woodland Trust
- Council for British Archaeology Wales
- CPRW – Council for the Protection of Rural Wales
- Cylch
- Friends of the Earth Cymru
- Groundwork Wales

- Keep Wales Tidy
- Marine Conservation Society
- National Trust
- Open Spaces Society
- Plantlife
- Ramblers Cymru
- RSPB Cymru
- Sustrans Cymru
- The Bat Conservation Trust
- Wildfowl and Wetlands Trust
- Wildlife Trusts Wales
- WWF Cymru

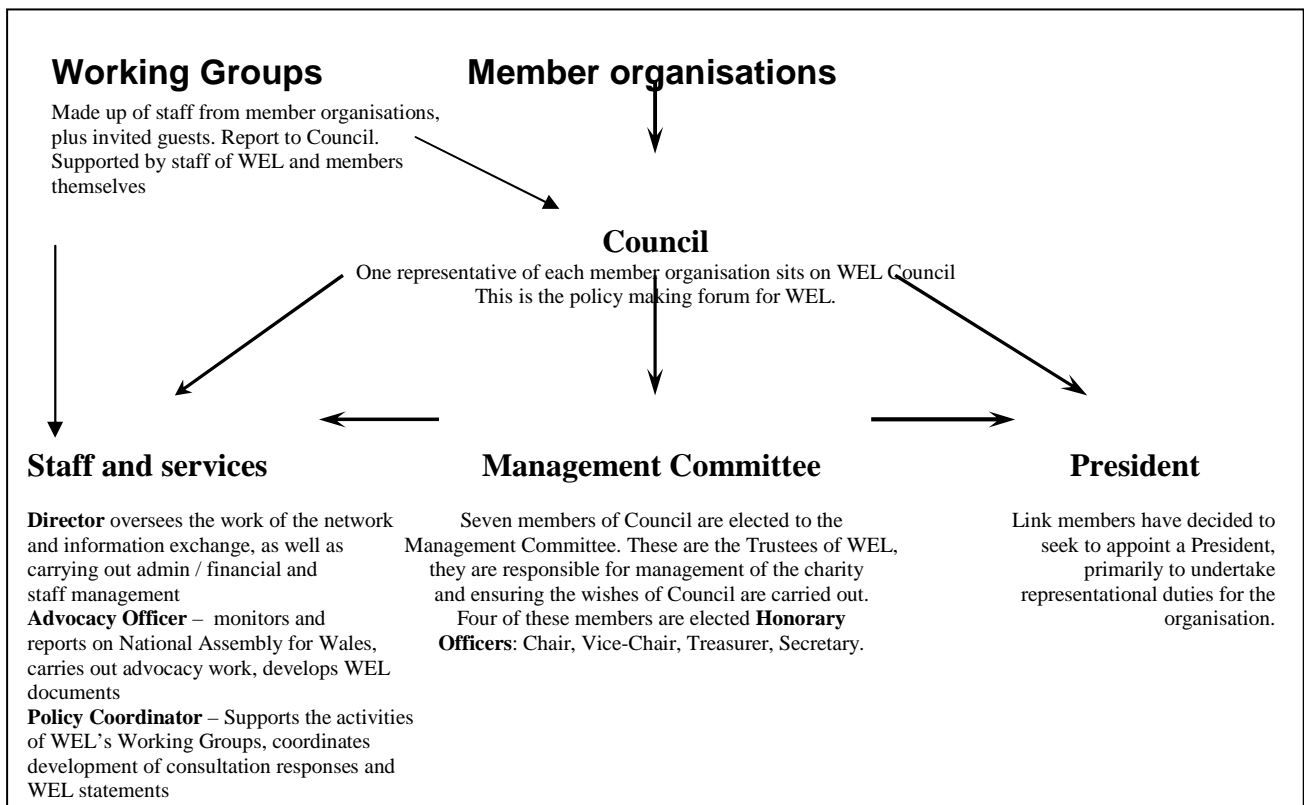
Associate Members (8)

- Afonydd Cymru
- Cambrian Mountains Society
- CAT - Centre for Alternative Technology
- Elan Valley Trust
- Environment Wales
- Snowdonia Society
- Wye & Usk Foundation
- YHA

Honorary Members (1)

- WCVA (Wales Council for Voluntary Action)

Structure and Operation of the network



Working Groups

The majority of joint-working within WEL takes place within our nine working groups, which have been set up to cover the following topics:

Advocacy	Energy & Transport	Land Use
Biodiversity	Environment Strategy	Marine
Climate Change	Green Exercise	Planning

The Marine Working Group

The WEL Marine working group is made up of representatives of RSPB Cymru, WWF Cymru, The Wildlife Trust Wales, Marine Conservation Society and the National Trust. The working group meets every 4-6 weeks to discuss forward work programmes, coordinate consultation responses and feedback on previous work/meetings etc.

* External Groups with WEL representation

- Better Woodlands for Wales Stakeholder Group
- Coastal Access Stakeholders Group
- Environment Strategy - Reference Group
- Environment Strategy - Reporting Group
- Fisheries Management Stakeholder Advisory Group
- Minerals Mapping Project for Wales Steering Group
- National Access Forum
- Networked Environment Regions Steering Group
- Policy Advocates Liaison Group
- Regional Forum on the Severn Tidal Power Feasibility Study
- River Basin Planning Groups:
 - Dee River Basin District Liaison Panel
 - Severn River Basin District Liaison Panel
 - Western Wales River Basin District Liaison Panel
- Rural Development Plan Group Axis 2
- Rural Development Plan Programme Monitoring Committee 2007 -2013
- Stakeholder Sounding Board on Non-native Species
- Sustainable Tourism Forum
- Third Sector Ministerial meetings (organised by WCVA)
 - Economy and Transport

- Education, Children, Young People and Skills
 - Environment, Sustainability and Housing
 - Finance and Public Service Delivery
 - Health and Social Services
 - Heritage
 - Rural Affairs
 - Social Justice and Local Government
- Third Sector Partnership Council (TSPC)
- TSPC Strategic Action Plan Sub Committee
- UK Chemical Stakeholder Forum
- WAG Agri-environment Groups
- WAG Animal Health and Welfare Steering Group
- WAG CAP Stakeholder Group
- WAG Land Use Climate Change Group
- Wales Advisory Group of the MOD Liaison Committee on the Environment
- Wales Biodiversity Partnership (WBP)
- WBP Non-Native Species Working Group
- WBP Policy Group
- Wales Climate Change Commission
- Wales Coastal and Maritime Partnership
- Wales Planning Forum
- Wales Spatial Plan Area Groups
 - Central Wales
 - Central Wales Spatial Plan European Sub Group
 - North East Wales
 - North West Wales
 - Pembrokeshire Haven
 - South East Wales
 - Swansea Bay & Western Valleys Area
- Wales Water Framework Directive Stakeholder Forum
- Woodland Strategy Advisory Panel

Further information

For further information about Wales Environment Link and its membership visit:
www.waleslink.org