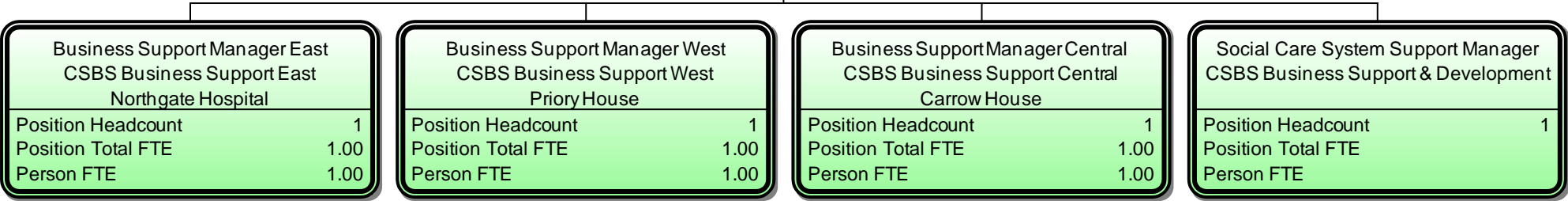


Business Support & Development Manager CSBS Business Support & Development COUNTY HALL	
Position Headcount	1
Position Total FTE	1.00
Person FTE	1.00

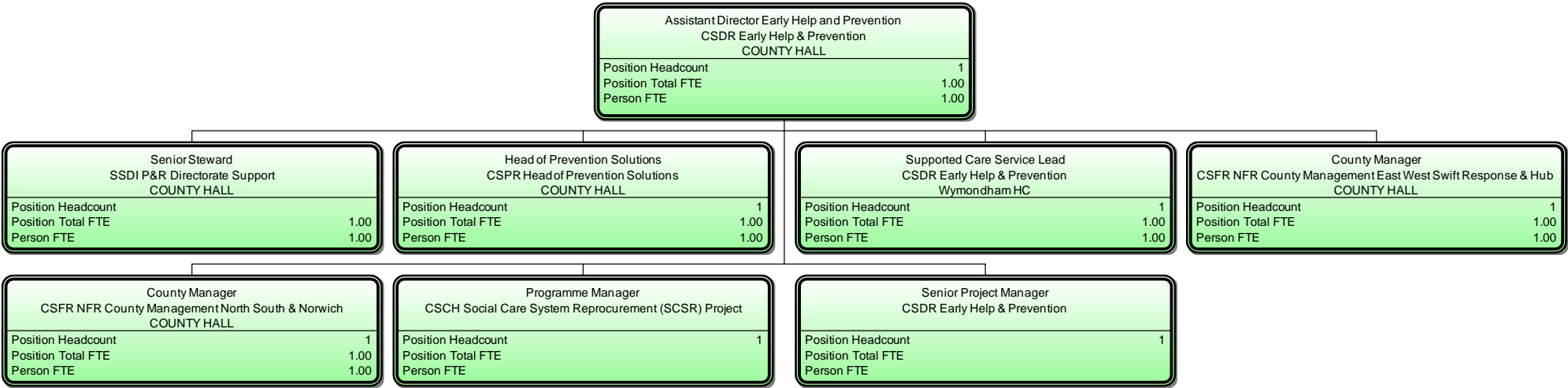


Business Support Manager East CSBS Business Support East Northgate Hospital	
Position Headcount	1
Position Total FTE	1.00
Person FTE	1.00

Business Support Manager West CSBS Business Support West Priory House	
Position Headcount	1
Position Total FTE	1.00
Person FTE	1.00

Business Support Manager Central CSBS Business Support Central Carrow House	
Position Headcount	1
Position Total FTE	1.00
Person FTE	1.00

Social Care System Support Manager CSBS Business Support & Development	
Position Headcount	1
Position Total FTE	
Person FTE	



Assistant Director Strategy and Transformation
CSST Strategy and Transformation
COUNTY HALL

Position Headcount	1
Position Total FTE	1.00
Person FTE	1.00

Programme Manager - Promoting Independence
CSST Strategy and Transformation
COUNTY HALL

Position Headcount	1
Position Total FTE	1.00
Person FTE	1.00

Director of Community Social Work (Joint)
ASSW Community Social Work
COUNTY HALL

Position Headcount	1
Position Total FTE	1.00
Person FTE	1.00

Assistant Director Integrated Operations MH/LD (Joint)
ASIO Integrated Operations - MH & LD
COUNTY HALL

Position Headcount	1
Position Total FTE	1.00
Person FTE	1.00

