

A10558W1

SECOND PUBLIC EXAMINATION

HONOUR SCHOOL OF ENGLISH LANGUAGE AND LITERATURE

COURSE II

**Paper 6c The Archaeology of Anglo-Saxon England
from the Seventh to the Ninth Centuries A.D.**

TRINITY TERM 2017

Tuesday, 16 May, 9.30am – 12.30pm

Time allowed – Three hours

Answer Question 1 and TWO others.

Do not turn over until told to do so.

1. Identify and comment on **three** of the objects illustrated in the accompanying photographs.

a)



A10558W1

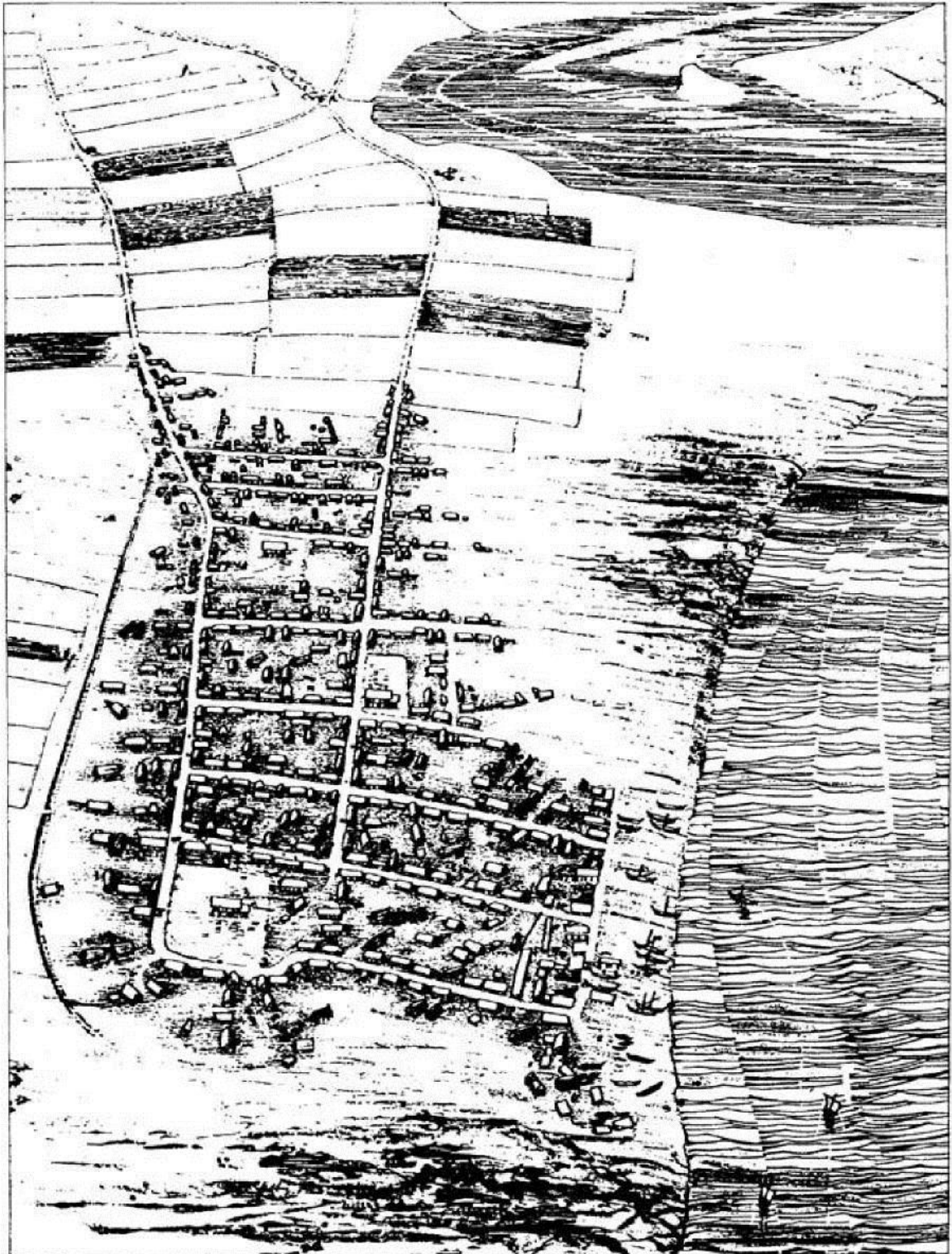
b)



A10558W1

TURN OVER

c)



A10558W1

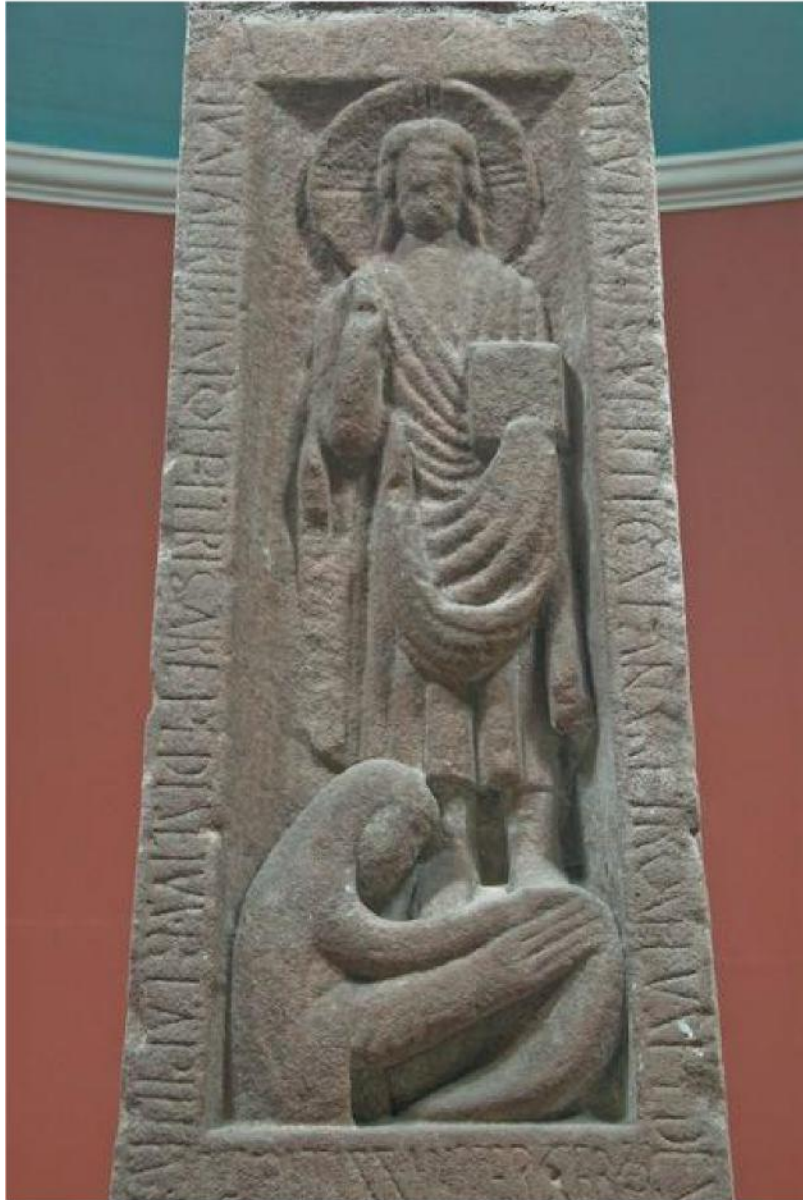
d)



A10558W1

TURN OVER

e)



A10558W1

f)



2. To what extent does the evidence of EITHER burials OR the coinage from emporia add to our understanding of these sites?
3. What do the locations of, and finds from, 'productive' sites suggest about their functions?
4. To what extent do the finds from high-status settlements and burials of this period suggest the existence of a shared 'court culture'?
5. How might some of the changes apparent in rural settlements of this period relate to changes in landholding?
6. How were mortuary rites associated with 'princely' burials distinct from those of other burials?
7. What were the main influences on the form and style of stone churches in this period?

A10558W1

TURN OVER

8. Review the arguments for determining whether or not undocumented settlements with high status artefact assemblages are monastic.
9. What features of 'Great Hall complexes' set them apart from other secular settlements of this period?
10. Should we reject the terms 'Final Phase' and 'Conversion Period' in favour of archaeological phasing and the use of calendrical date-ranges? Explain your answer.
11. Our understanding of the scale on which sceatta coinages were minted has changed significantly. Should this change our understanding of their function?
12. What techniques are used to establish the dates of EITHER the ornamental metalwork OR the manuscripts of this period?