

DENB 2425

SECOND PUBLIC EXAMINATION

---

HONOUR SCHOOL OF ENGLISH LANGUAGE AND LITERATURE  
2009

COURSE II

B10 THE ARCHAEOLOGY OF ANGLO-SAXON ENGLAND  
FROM THE SEVENTH TO THE NINTH CENTURIES A.D.

---

TRINITY TERM 2009

Monday, 25 May, 9.30 a.m. - 12.30 p.m.

Time allowed - Three hours

---

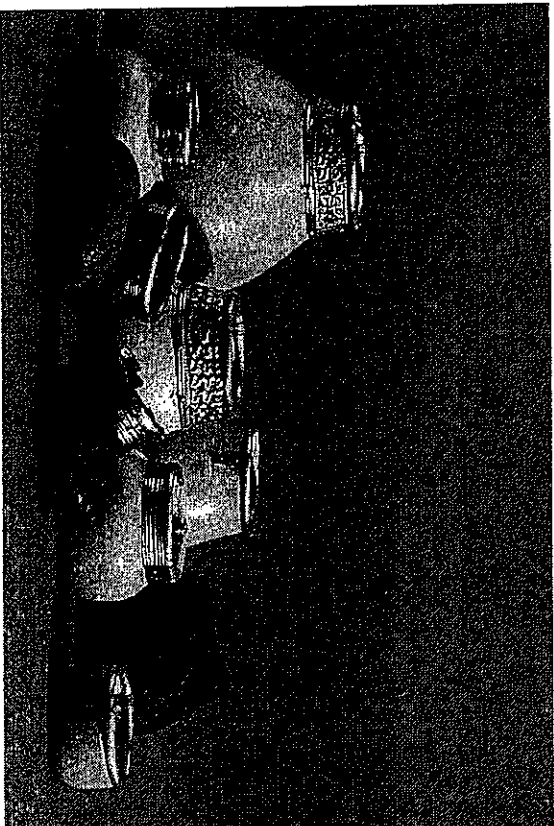
Answer Question 1 and TWO others.  
You should pay attention in your answers to the precise terms of the question.

Do not turn over until told to do so.

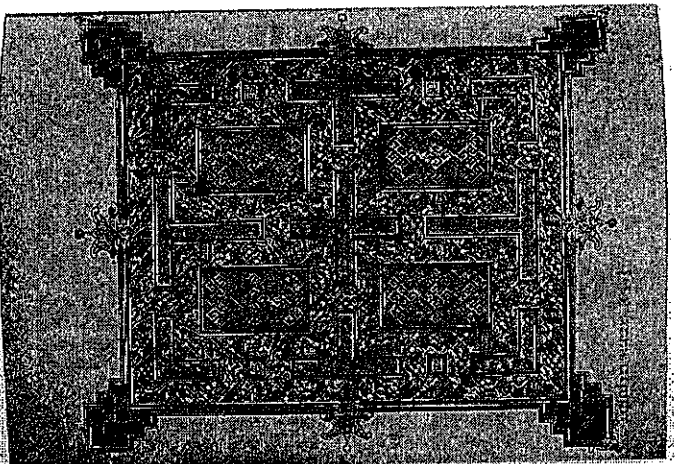
Answer Question 1 and *two* others. You should pay careful attention in your answers to the precise terms of the questions.

1. Identify and comment on three of the objects illustrated in the accompanying photographs.

a)

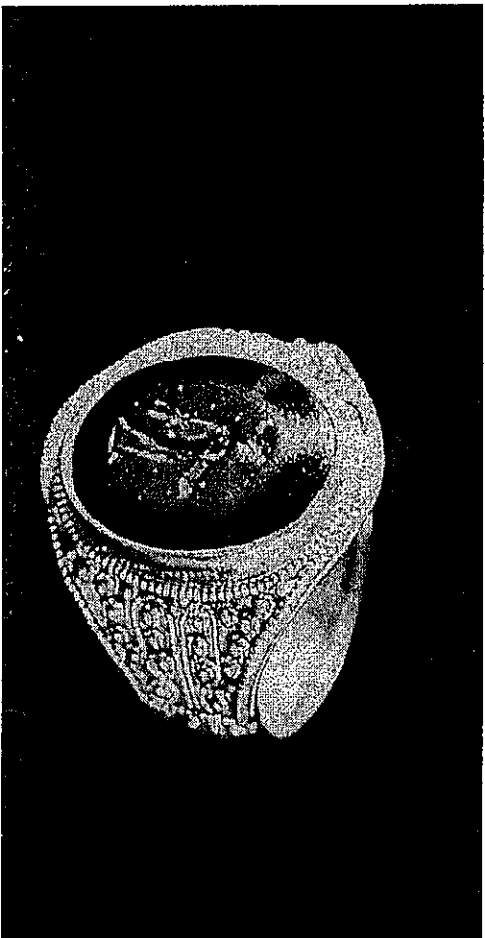


b)



DENB 2425

c)



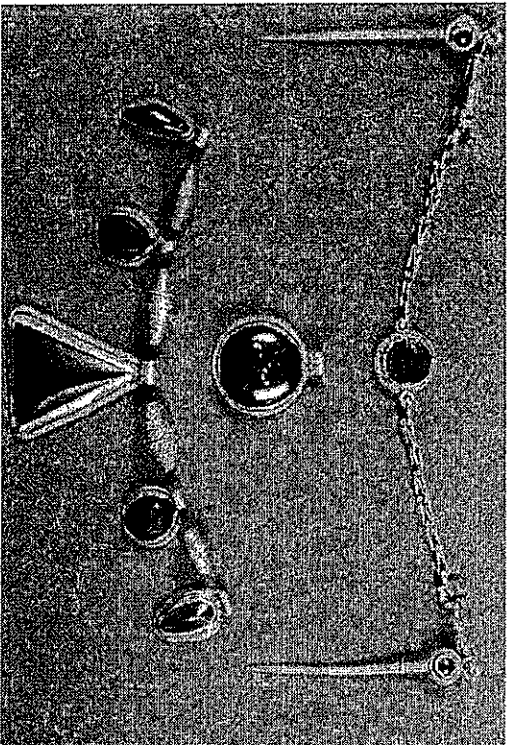
d)



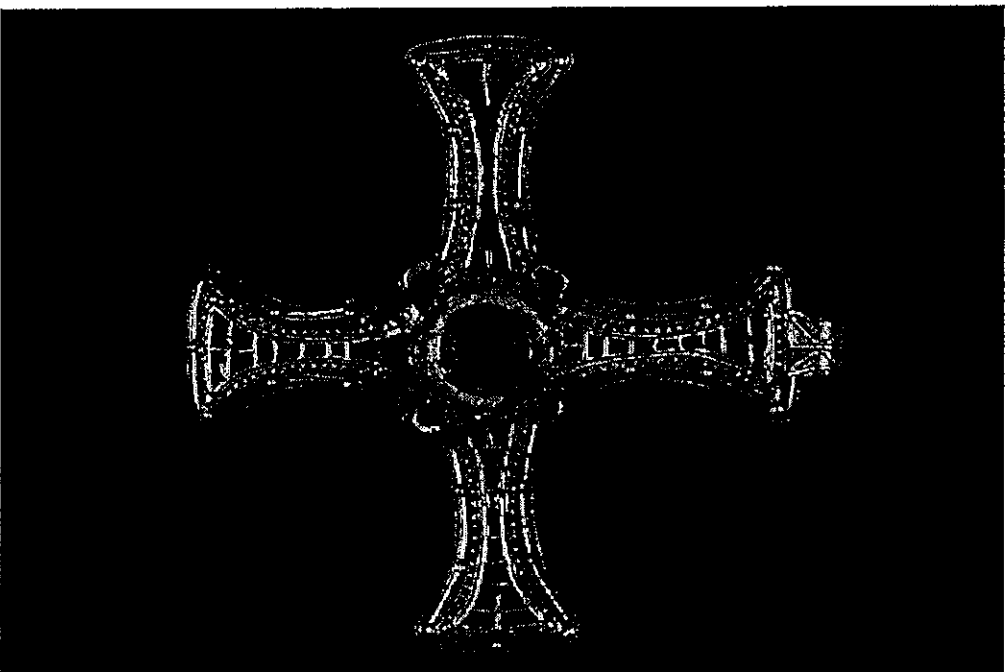
DENB 2425

TURN OVER

e)



f)

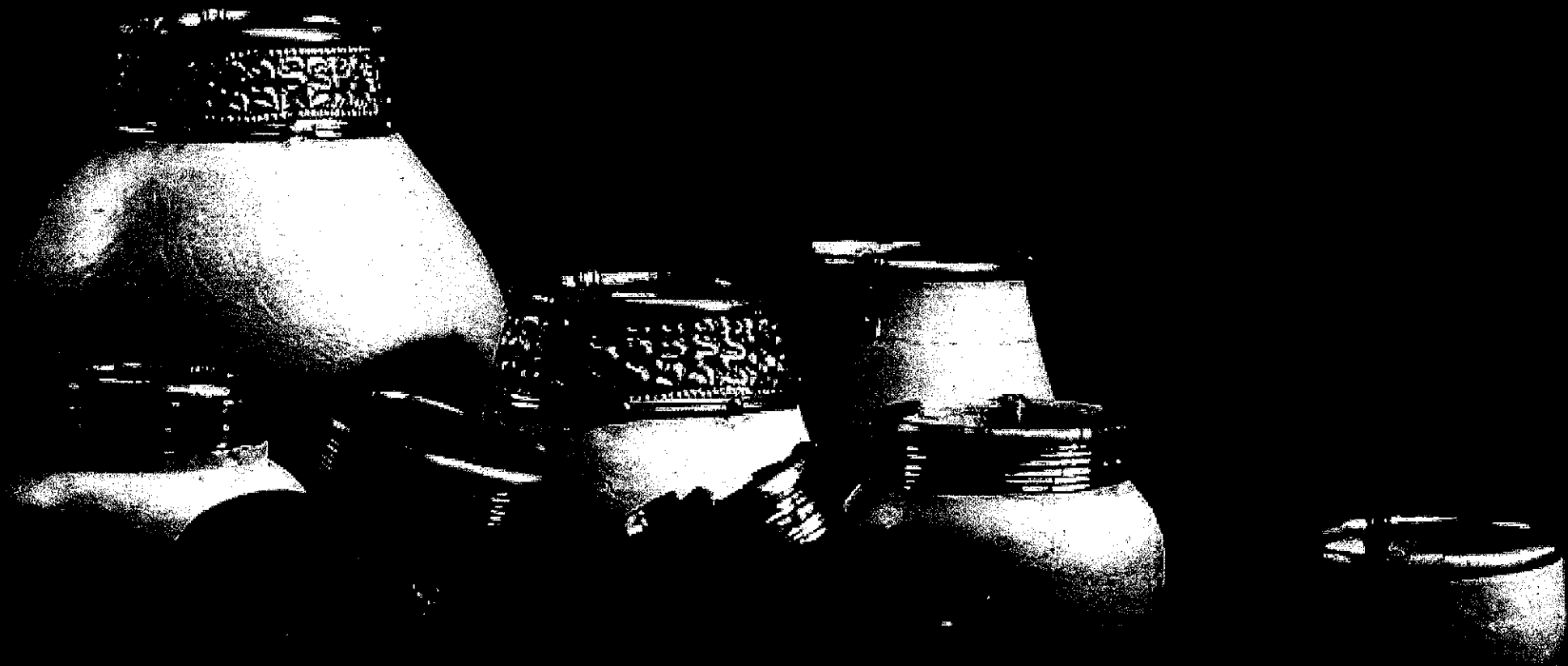


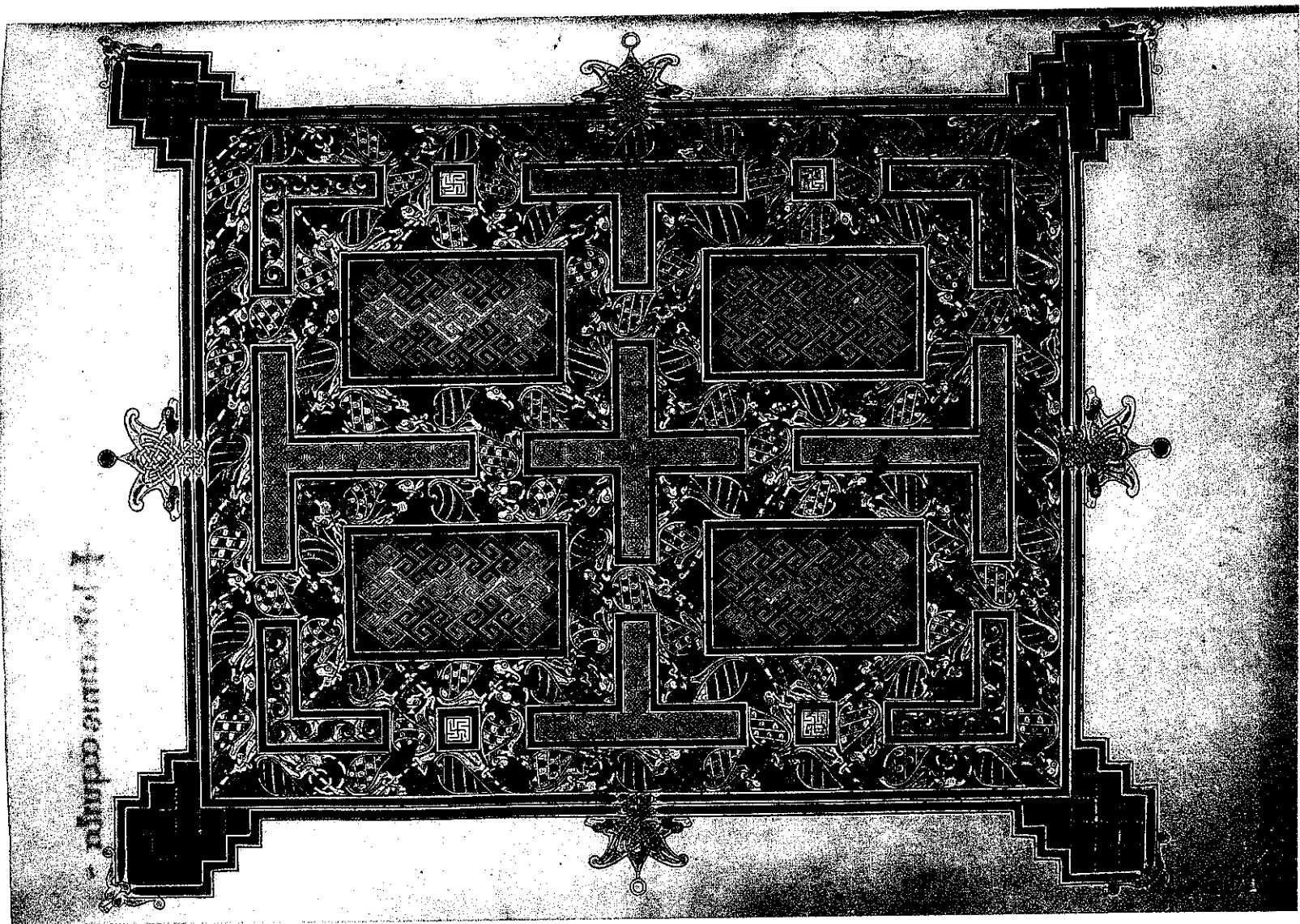
DENB 2425

2. How and why did female dress styles change in this period?
3. Describe and account for the shared characteristics of male 'princely' burials.
4. To what extent did the Anglo-Saxon 'emporia' develop in similar ways?
5. How should we interpret 'productive sites'?
6. Should we abandon the term 'Final Phase' to describe the cemeteries of this period?
7. What kind of information can we derive from studying the distribution of *sceatta* coinages?
8. EITHER: To what extent is it possible to 'read' the stone crosses of this period?  
OR: What does the distribution of stone sculpture reveal about its original purpose and context?
9. What changes can we see in ordinary rural settlements of this period and how should those changes be interpreted?
10. How can a study of the methods and raw materials used in the production of manuscripts elucidate the cultural milieu in which they were made?
11. Is it possible to distinguish from archaeological evidence alone between a high status secular settlement and a minster?
12. What, in your view, is the proper relationship between the archaeology and literature of this period?

DENB 2425

6



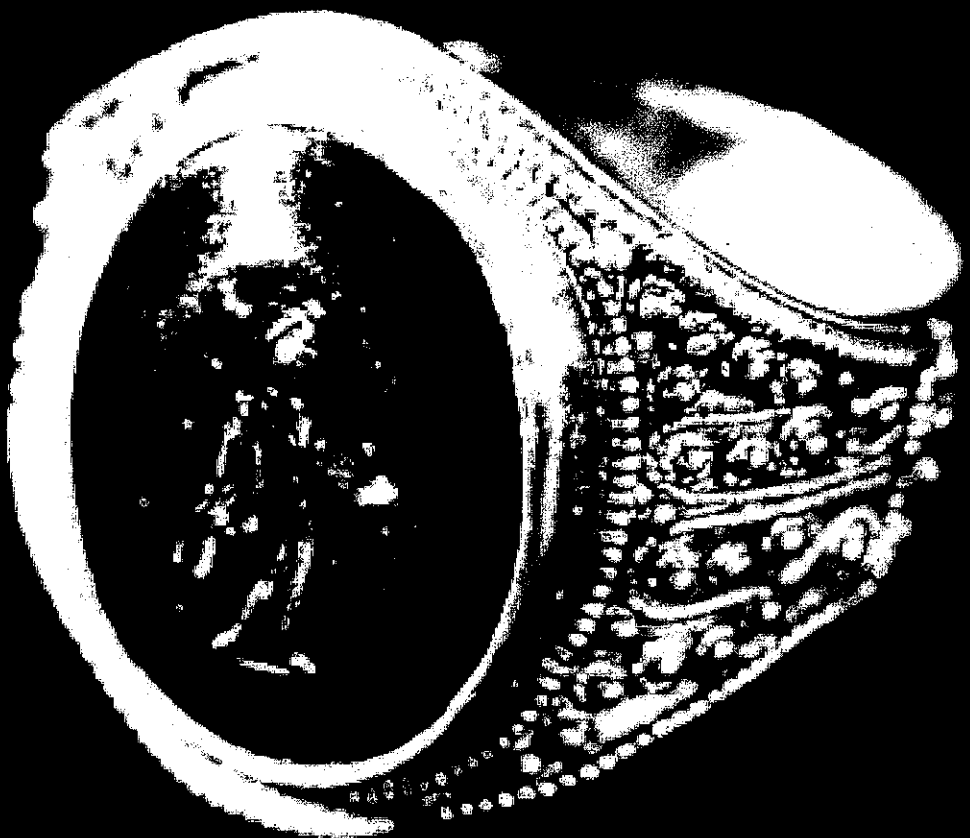


B

DENB 2425

7

TURN OVER



DENB 2425

8



P.

