

2425

SECOND PUBLIC EXAMINATION

HONOUR SCHOOL OF ENGLISH LANGUAGE AND LITERATURE

COURSE II

**B10 THE ARCHAEOLOGY OF ANGLO-SAXON ENGLAND
FROM THE SEVENTH TO THE NINTH CENTURIES A.D.**

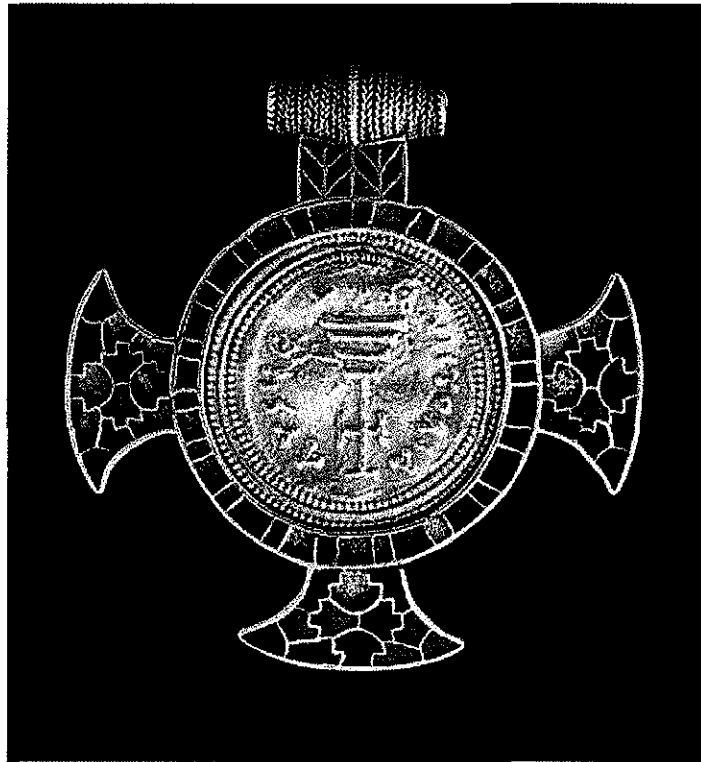
TRINITY TERM 2011

Monday, 23 May, 9.30 am – 12.30 pm

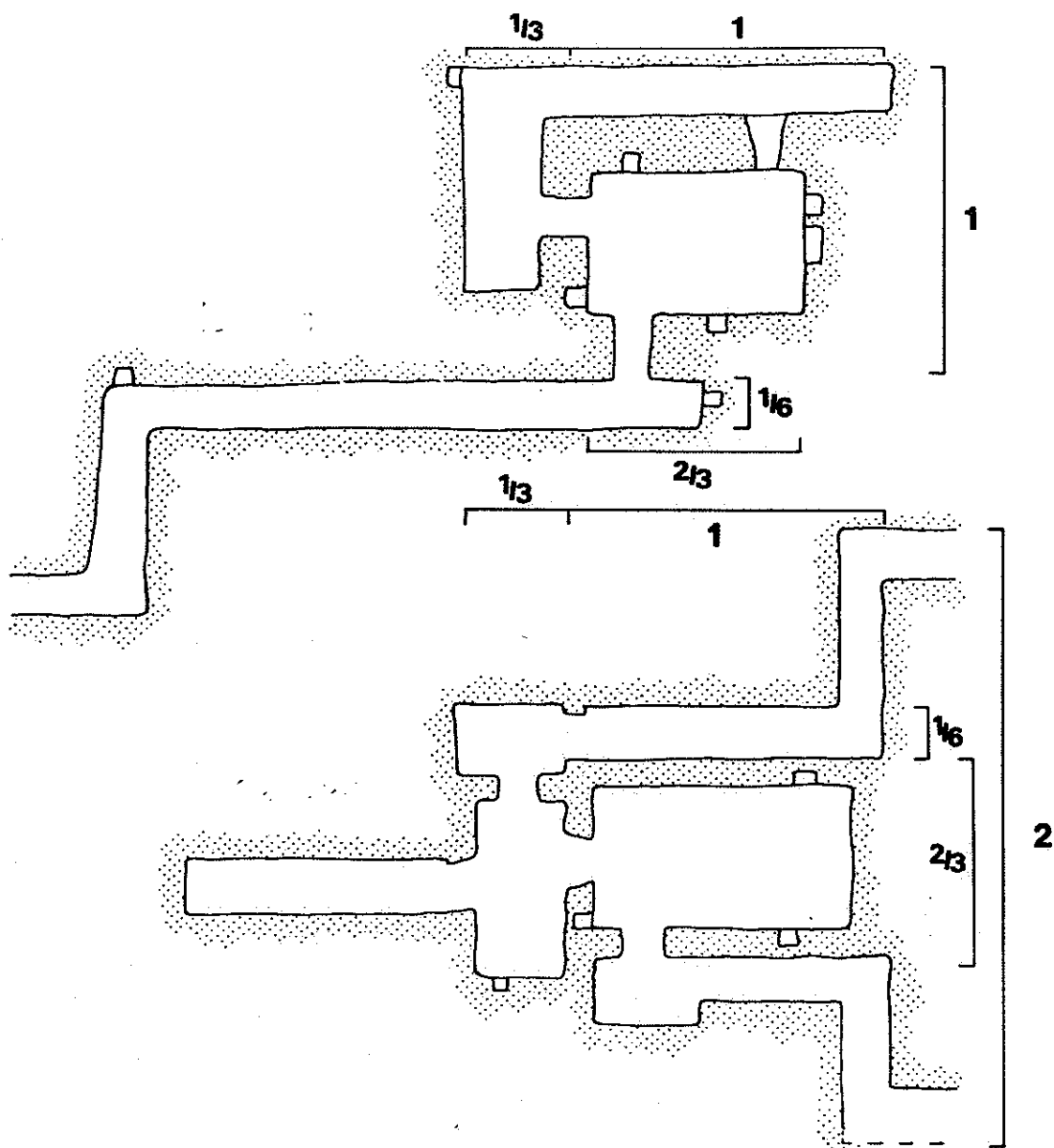
Time allowed - Three hours

**Answer Question 1 and TWO others.
You should pay attention in your answers to the precise terms of the question.**

Do not turn over until told to do so.

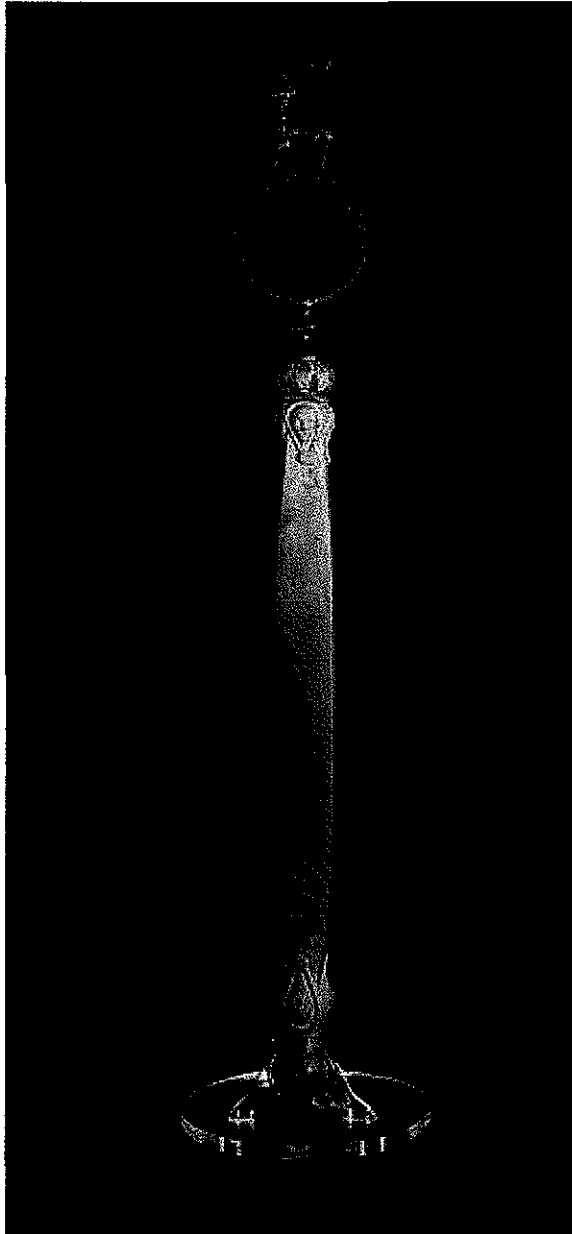


2425

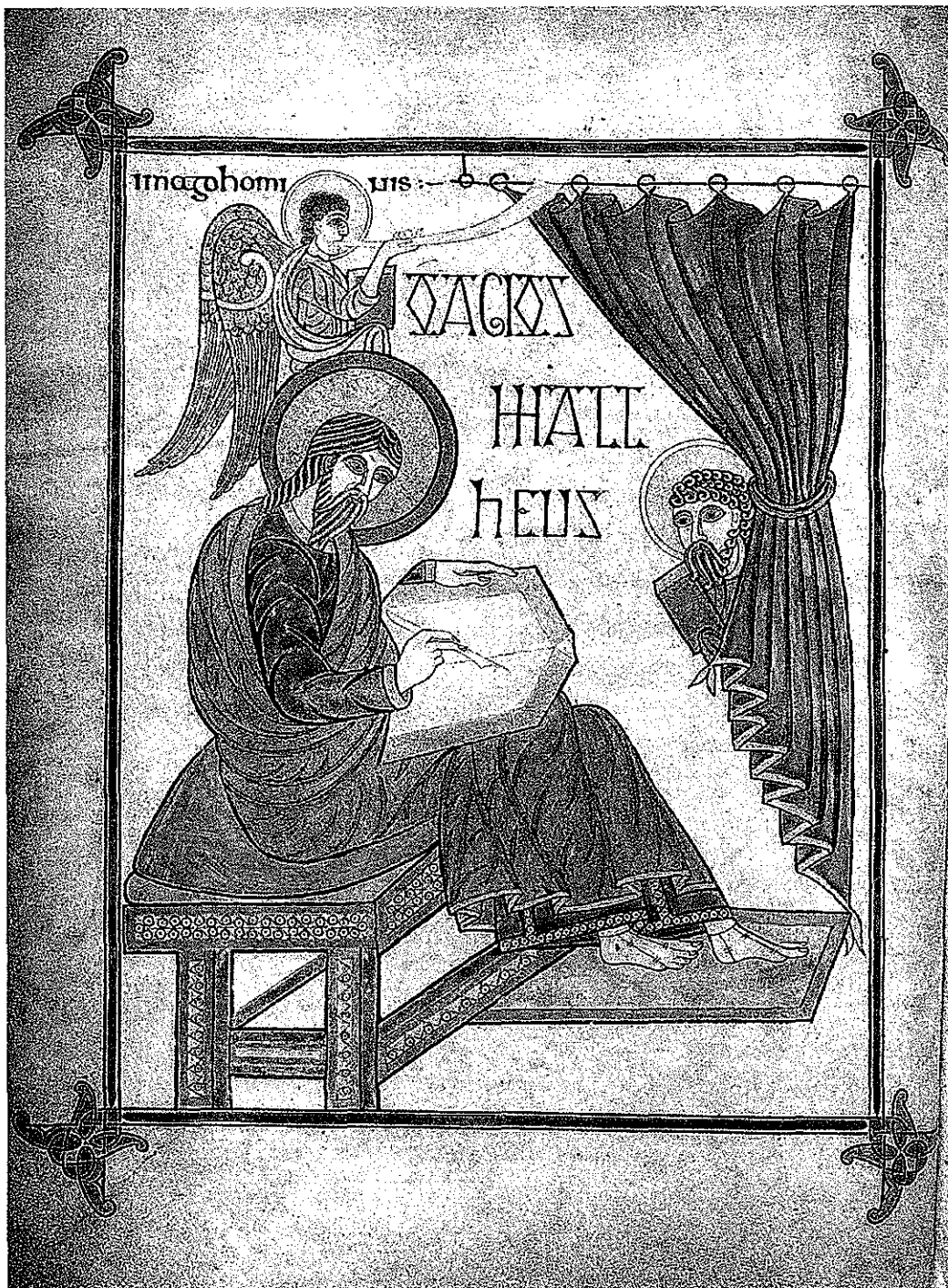


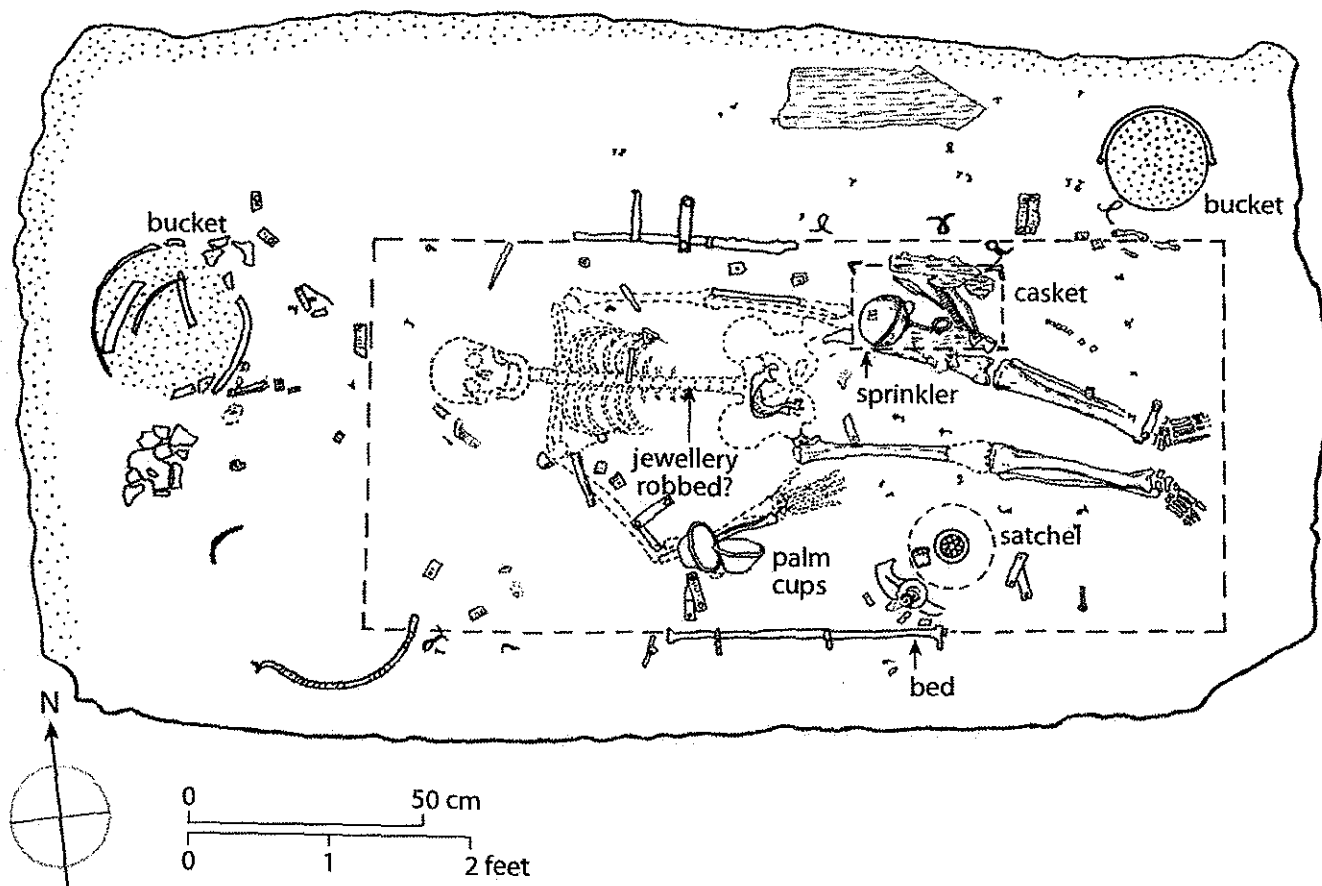
2425

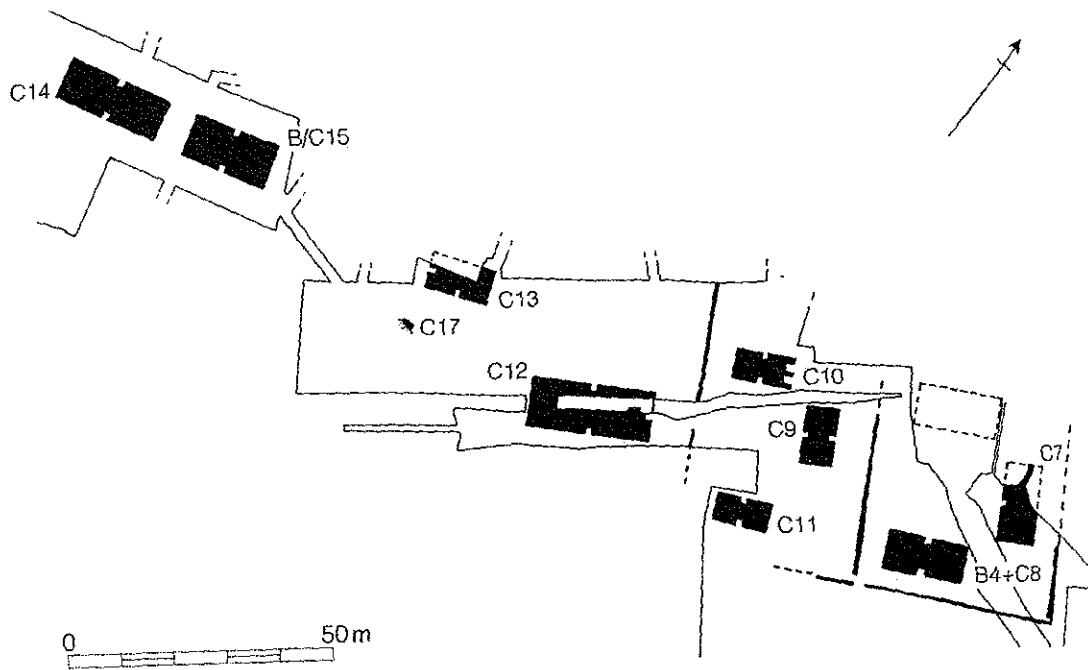
TURN OVER



2425







TURN OVER

1. Identify and comment on three of the objects illustrated in the accompanying photographs.
2. How typical is Hamwic of Anglo-Saxon *wics*?
3. Account for changes in rural settlement patterns and building techniques in the 7th and 8th centuries.
4. What, in your view, were the possible functions of 'productive' sites?
5. How appropriate, in the context of the sites that you have studied, is the term 'princely burial'?
6. To what extent can changes in the location of burials and burial rites be attributed to the Conversion?
7. What might explain the revival of high-status furnished female burial in the later seventh century?
8. How would you distinguish a monastic from secular site in your period, without the aid of written texts?
9. What do the location and iconography of Anglo-Saxon stone crosses reveal about the communities that produced them?
10. What do the Lindisfarne Gospels tell us about the influences on the Northumbrian Church in the seventh and eighth centuries?
11. What changes do we see in the materials and techniques used to produce ornamental metalwork in this period and why are such changes significant?
12. To what extent should archaeologists use the written record to aid their interpretation of the past?