

DENB 2425

SECOND PUBLIC EXAMINATION

HONOUR SCHOOL OF ENGLISH LANGUAGE AND LITERATURE

COURSE II

**B10 THE ARCHAEOLOGY OF ANGLO-SAXON ENGLAND
FROM THE SEVENTH TO THE NINTH CENTURIES A.D.**

TRINITY TERM 2006

Friday, 26 May, 9.30 a.m.- 12.30 p.m.

Time allowed - Three hours

Answer Question 1 and TWO others.

You should pay attention in your answers to the precise terms of the question.

Do not turn over until told to do so.

You should pay attention in your answers to the precise terms of the question.

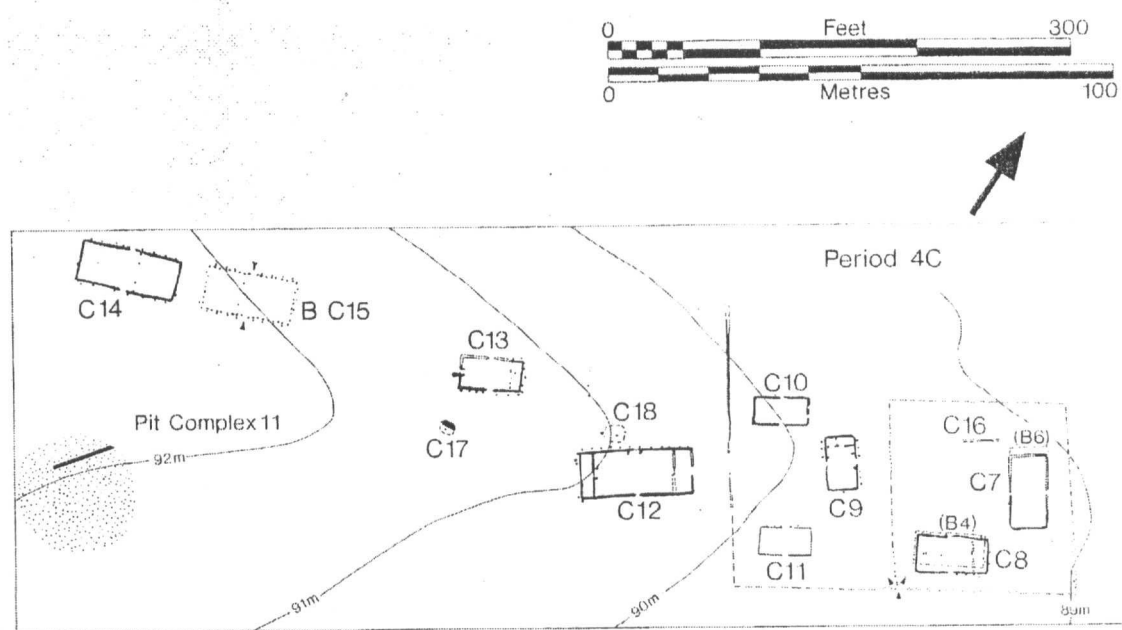
1. Identify and comment on three of the following objects illustrated.

a)

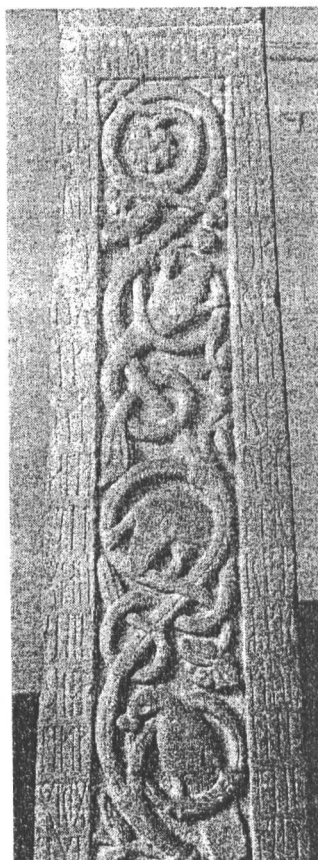


DENB 2425

b)



c)



DENB 2425

TURN OVER

d)

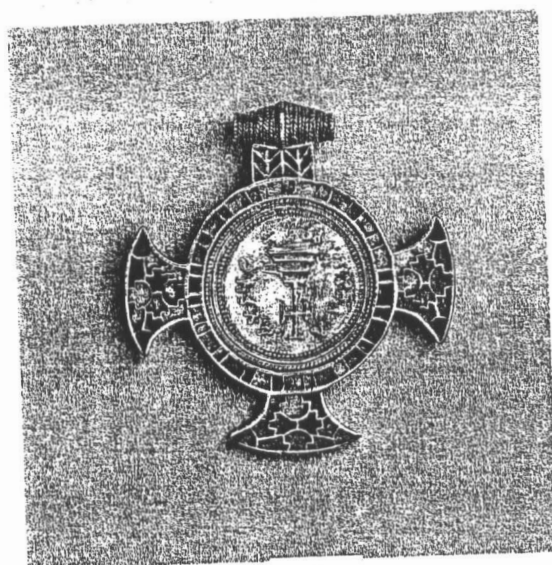


DENB 2425

e)



f)



DENB 2425

TURN OVER

2. Give an account of the diversity of burial forms and practices in this period.
3. EITHER: (a) What do the 'princely' burials of this period tell us about the basis of power in seventh-century England? OR (b) The Sutton Hoo ship burial was 'a major exercise in legitimization' (CARVER). What is meant by this statement and do you agree with it?
4. To what extent has the excavation of Anglo-Saxon emporia altered the way in which the economy of this period is viewed?
5. What are the most significant changes seen in the rural settlements and settlement patterns of this period? Include Pennyland, Riby Cross Roads and Yeavinger in your discussion.
6. To what extent should the Conversion be seen as the catalyst for, rather than the cause of, the changes in material culture that we see in this period?
7. Were all sceatta coinages used in the same way?
8. What can be inferred about the production and function of stone crosses in Northumbria in this period?
9. The fifth and sixth centuries saw the 'Germanization' of material culture in England. In what sense did the seventh and eighth centuries see its 'Romanization'?
10. How can a study of the methods and raw materials used in the production of manuscripts elucidate the cultural milieu in which they were made?
11. Why can it be difficult to distinguish, from archaeological evidence alone, between a monastery and a high-status secular settlement? Discuss with special reference to the sites at Brandon AND Flixborough.
12. What, in your view, is the proper relationship between the archaeology and literature of this period?