

DENB 2425

SECOND PUBLIC EXAMINATION

HONOUR SCHOOL OF ENGLISH LANGUAGE AND LITERATURE 2007

COURSE II

**B10 THE ARCHAEOLOGY OF ANGLO-SAXON ENGLAND
FROM THE SEVENTH TO THE NINTH CENTURIES A.D.**

TRINITY TERM 2007

Thursday 17 May 2007, 9.30 a.m. – 12.30 p.m.

Time allowed - Three hours

Answer Question 1 and TWO others.

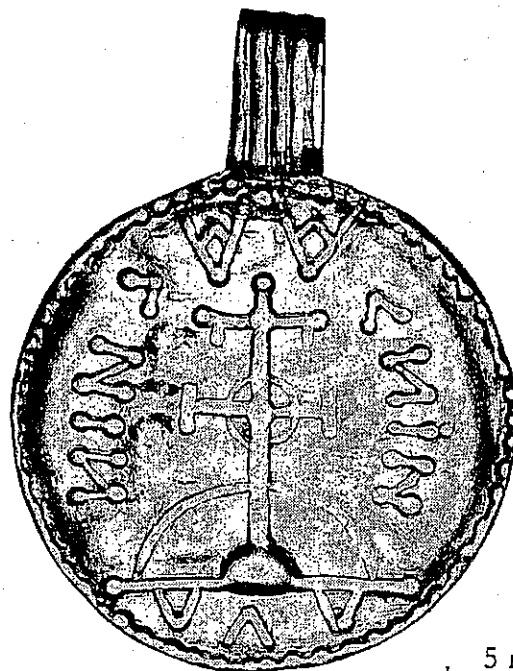
You should pay attention in your answers to the precise terms of the question.

Do not turn over until told to do so.

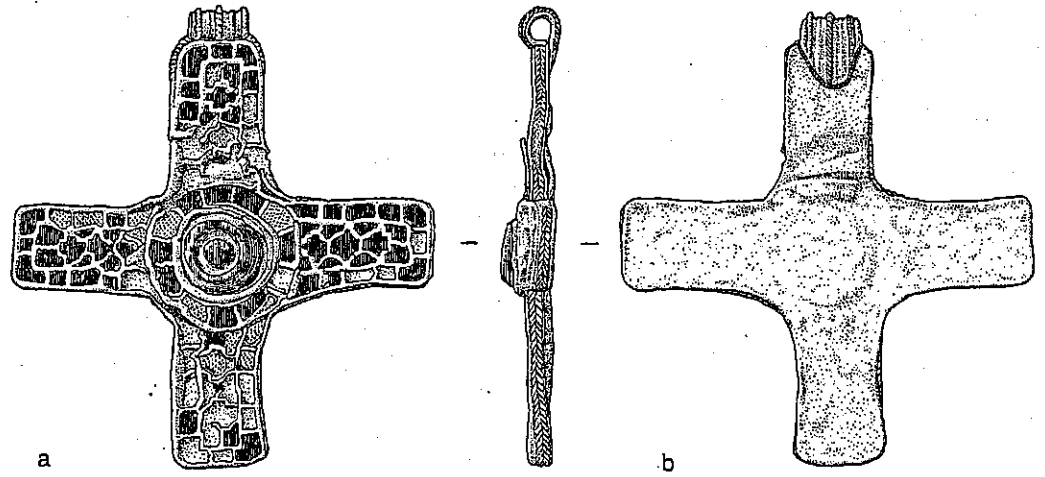
Answer Question 1 and *two* others. You should pay careful attention in your answers to the precise terms of the questions.

1. Identify and comment on *three* of the objects depicted in the accompanying illustrations. **These will be found at the end of this booklet.**
2. What changes occur in rural settlement during this period, and how may these be explained? Include buildings, settlement layout, and 'special purpose' settlements in your discussion.
3. To what extent is the Anglo-Saxon hall a representation of status? What other functions may it represent?
4. Has the discovery of the 'Prittlewell Prince' changed our understanding of Anglo-Saxon 'princely' burials?
5. How would you explain changes in burial practice c.600-750?
6. Was there a 'blueprint' for the building of monastic sites in pre-Viking England?
7. How far can archaeologists distinguish between monastic and high-status secular sites in this period, and does such a distinction matter? Discuss with reference to at least two sites.
8. How has the study of 'productive sites' changed our views of Middle Anglo-Saxon economy?
9. What functions may coins have performed in the period c.600 - c.800?
10. How far were 'wics' different to other settlements of the period?
11. What diverse influences inspired the artists of the Golden Age of Northumbria? Discuss with references to manuscripts and stone crosses.
12. To what extent did the Conversion influence the style, materials, and technology of ornamental metalwork? What other influences may there have been?

(a)



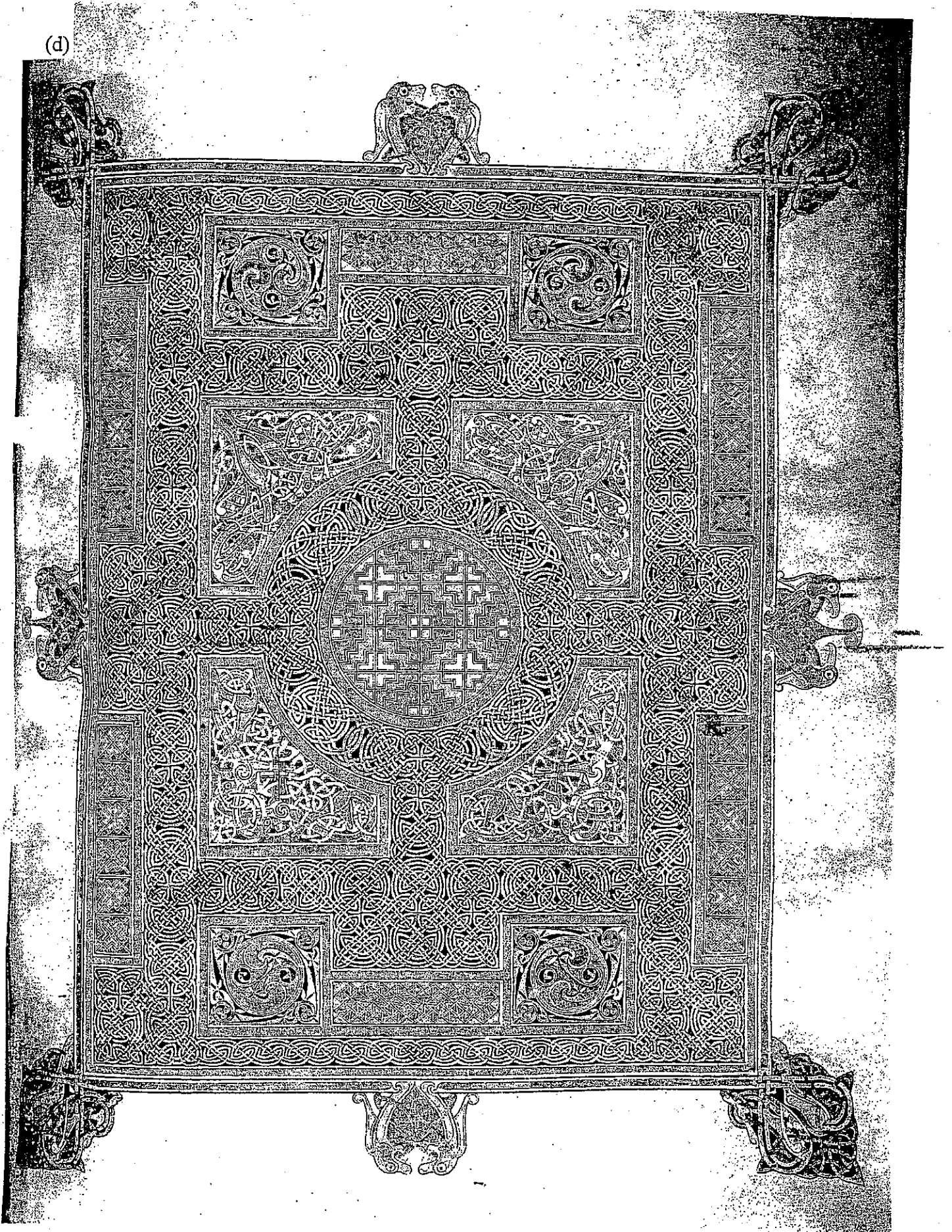
(b)



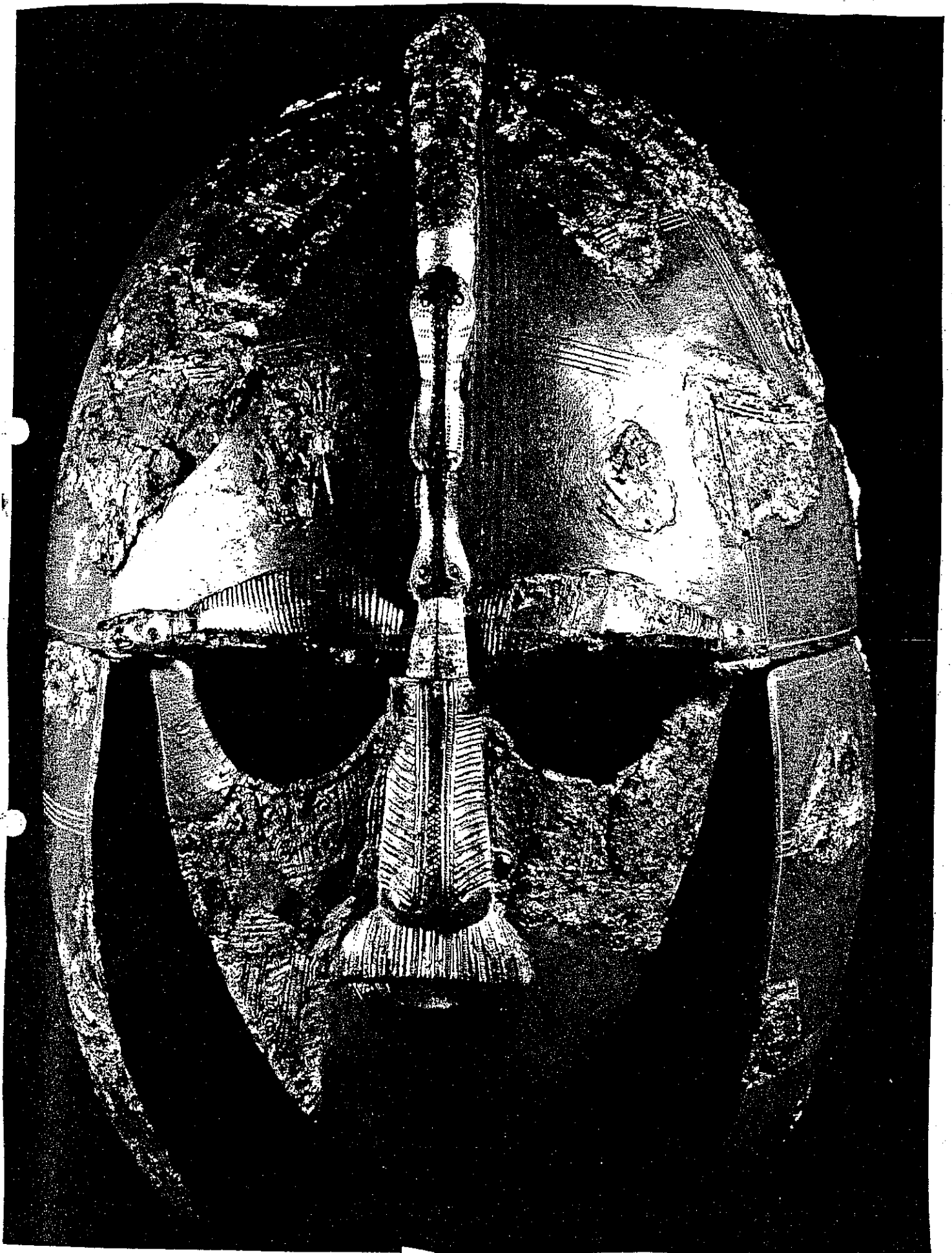
(c)



(d)



(e)



DENB 2425

7

TURN OVER

(f)

