

DENB 2425

SECOND PUBLIC EXAMINATION

HONOUR SCHOOL OF ENGLISH LANGUAGE AND LITERATURE 2004

COURSE II

B10 The Archaeology Of Anglo-Saxon England, seventh to the ninth centuries A.D.

Friday, 21.May 2004, 9.30 am to 12.30 pm

Time allowed - Three hours

Answer Question 1 and *two* others. You should pay careful attention in your answers to the precise terms of the questions.

Do not turn over until told that you may do so.

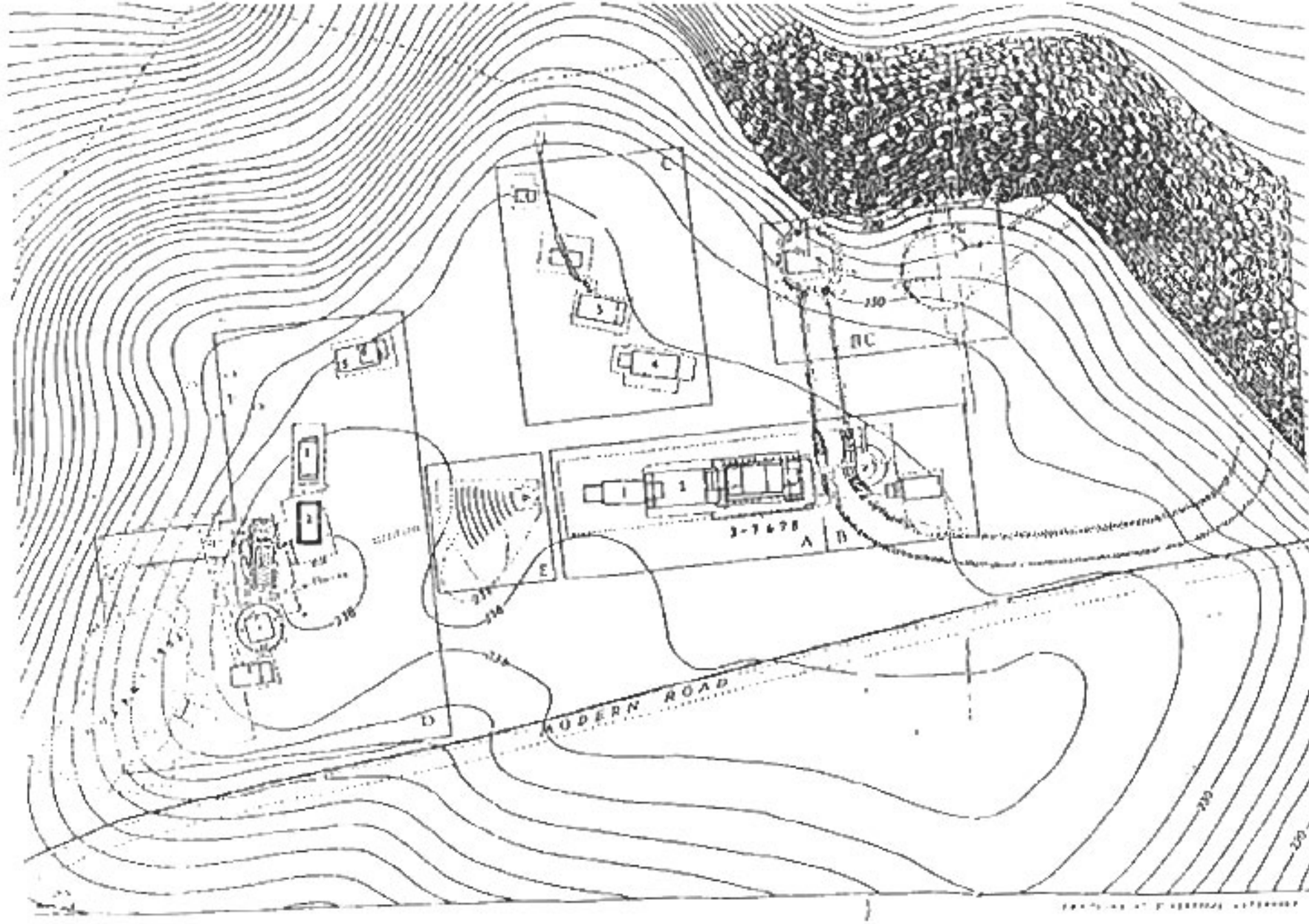
Answer Question 1 and *two* others. You should pay careful attention in your answers to the precise terms of the questions.

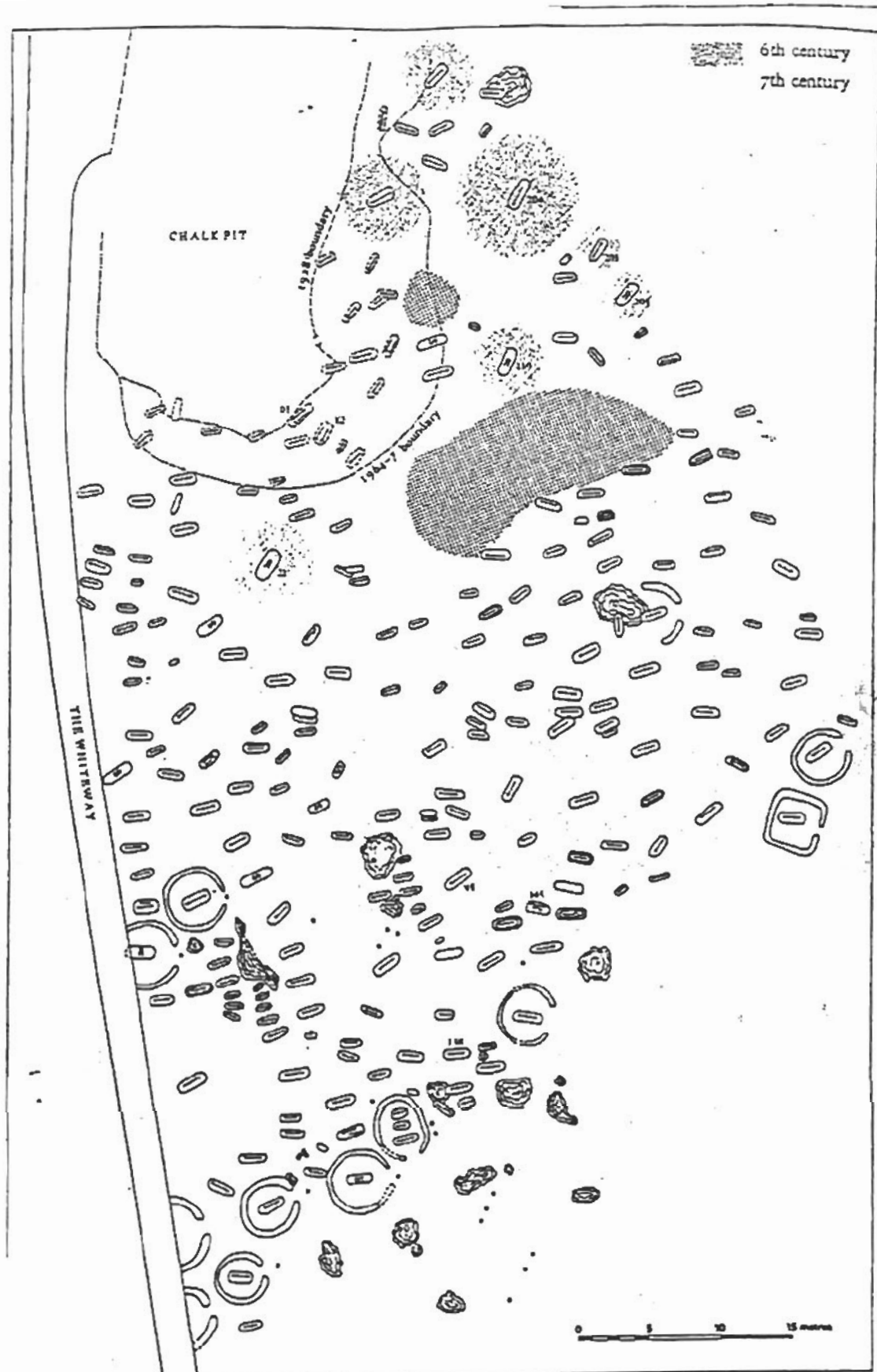
1. Identify and comment on three of the objects illustrated in the accompanying photographs.
2. What have excavations at Yeavinger **AND** Cowdery's Down revealed about the nature of the Anglo-Saxon 'Great Hall' that was not already known from written sources?
3. Critically evaluate Carver's interpretation of the cemetery at Sutton Hoo as an expression of 'defiant paganism'.
4. EITHER (a) What does the location of cemeteries and individual burials of the seventh and eighth centuries tell us about changes in social organisation?

OR (b) Is the concept of a 'Final Phase' cemetery still a useful one? Discuss with reference to specific cemeteries.
5. EITHER (a) What is the relationship between text and iconography on the Ruthwell Cross?

OR (b) What can the study of the technology and materials used to produce ornamental metalwork of the early Christian Period reveal about the society that produced these objects?
6. What do the images portrayed on sceatta coinages reveal about the nature of early Anglo-Saxon kingship?
7. EITHER (a) In what ways did the Anglo-Saxons make use of Roman sites, buildings and material culture?

OR (b) How and why were prehistoric monuments adopted and re-used by Anglo-Saxons in this period?
8. What kind of places were the wics? Discuss with reference to two of the following sites: Hamwic (Saxon Southampton), London, Ipswich or York.
9. Assess the impact of the Irish on the art and culture of seventh- to ninth- century England.
10. What has the archaeology revealed about life in Anglo-Saxon monasteries that we did not already know from written sources?
11. What changes in rural settlement occur during the 7th -9th centuries in Anglo-Saxon England?

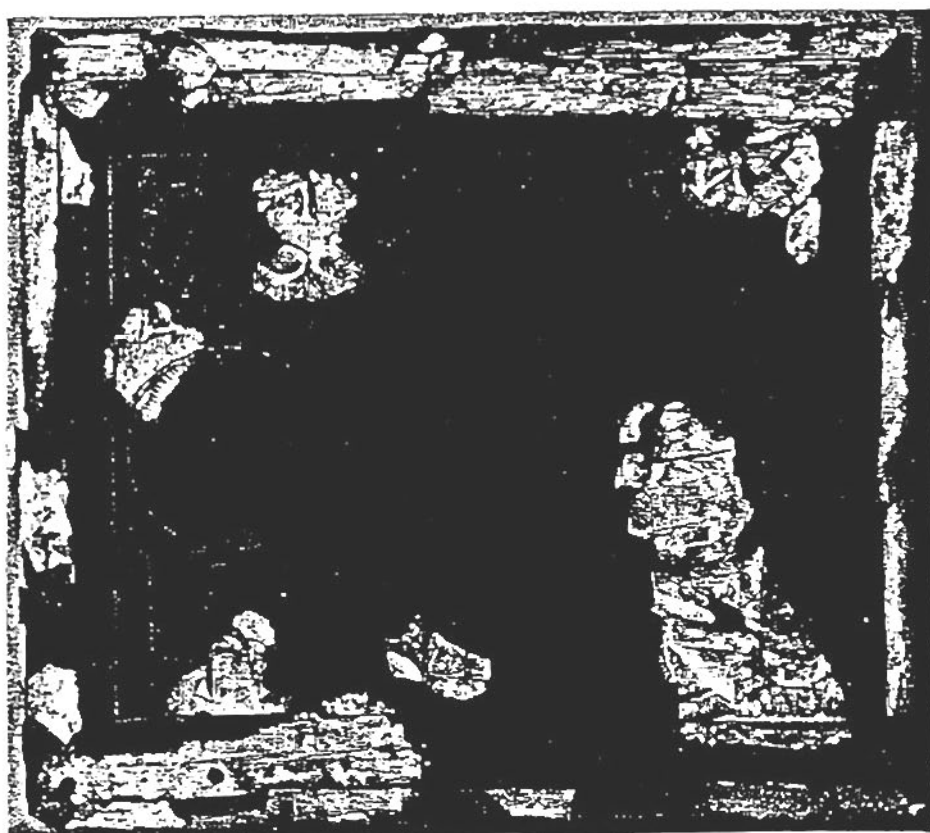
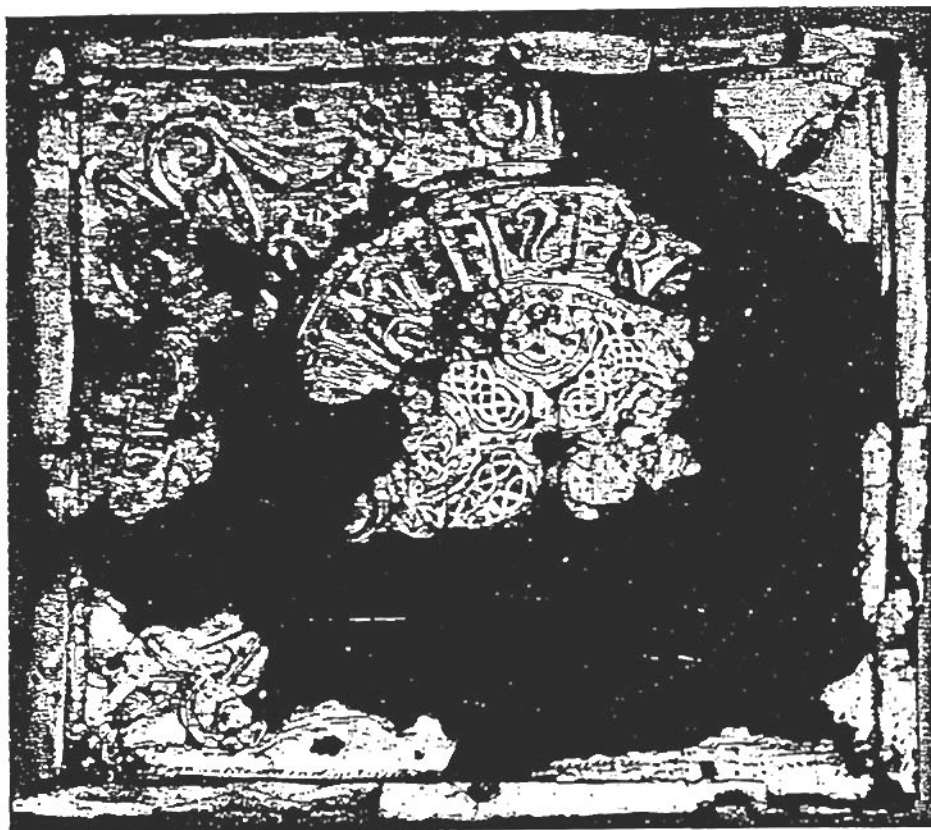




- Approximate position of grave published by Stebbing, 1928-29
 Unrecorded grave, probably excavated by Stebbing

- Grave robbed in antiquity
 Orientation of body in grave
 Posthole
 Irregular hollow, earthy fill

- Glacial deposit, clay with flints
 Barrow
 Ditch



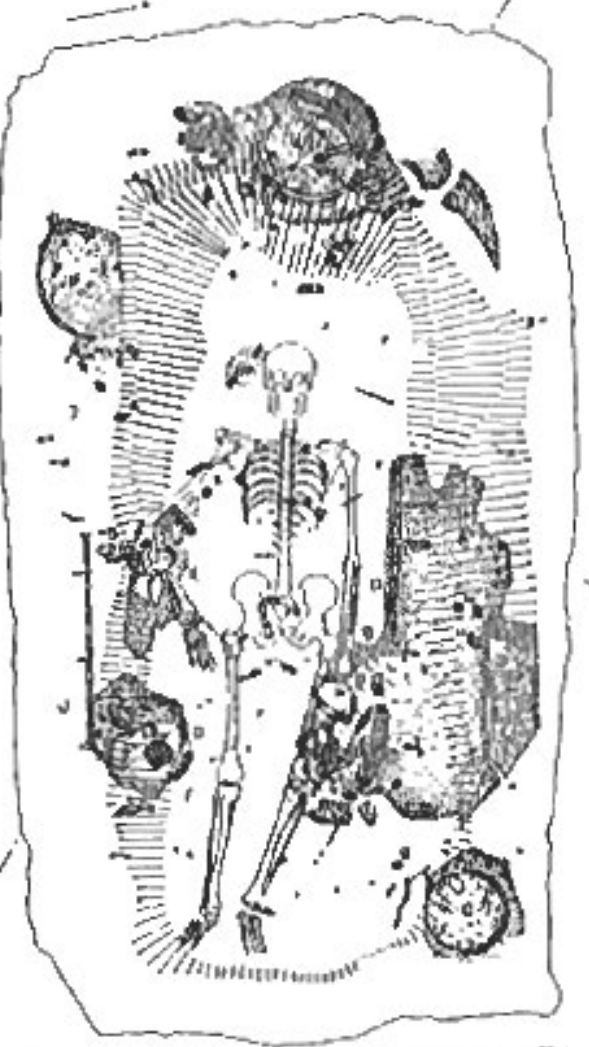
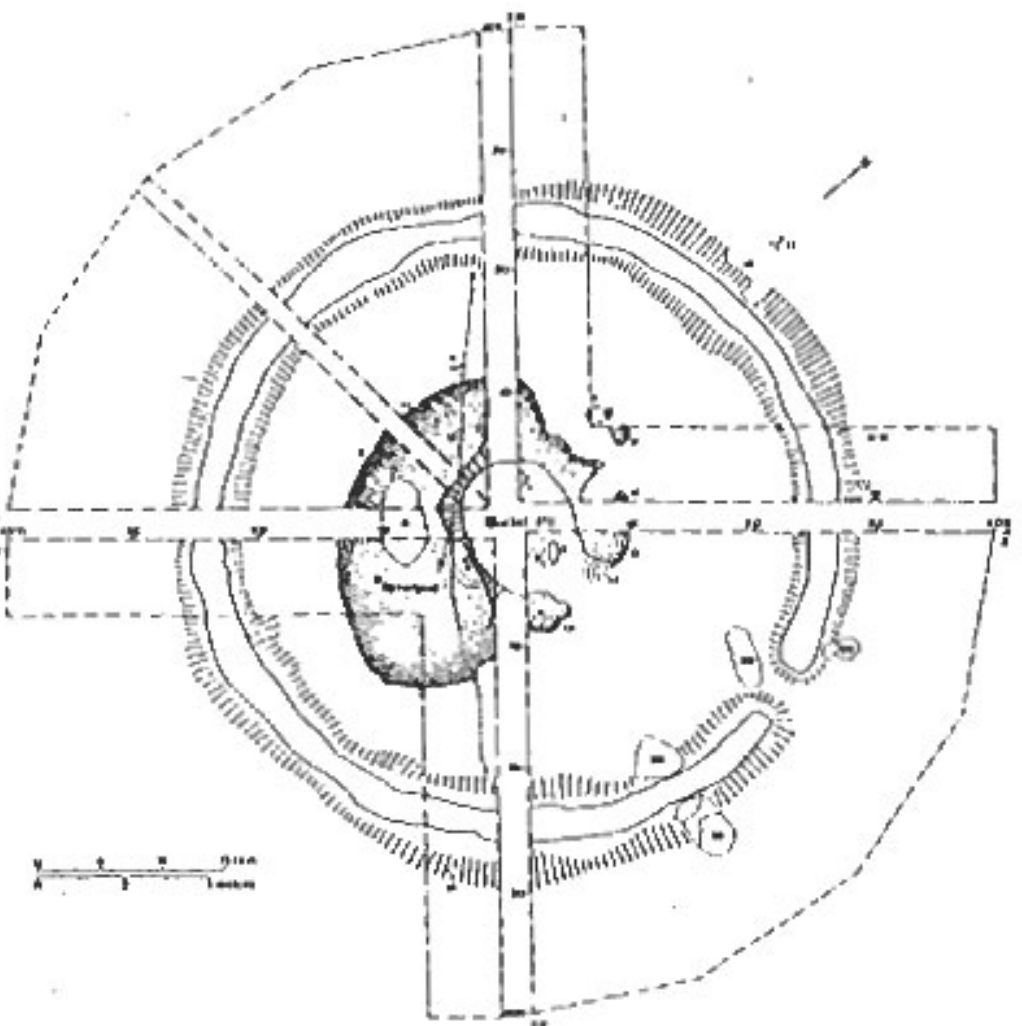


Fig. 18. Plan of the grave showing the position of skeleton A & the location of the find (skeleton B) in a sand, in a cavity (1/10).



0 1 2 3 4 5 6 7 8 9 10 11 12 13 14 15 16 17 18 19 20 21 22 23 24 25 26 27 28 29 30 31 32 33 34 35 36 37 38 39 40 41 42 43 44 45 46 47 48 49 50 51 52 53 54 55 56 57 58 59 60 61 62 63 64 65 66 67 68 69 70 71 72 73 74 75 76 77 78 79 80 81 82 83 84 85 86 87 88 89 90 91 92 93 94 95 96 97 98 99 100

1



† Lucas uirgilius -

incipit euangelium

secundum lucam...

