

DENB 2425

SECOND PUBLIC EXAMINATION

HONOUR SCHOOL OF ENGLISH LANGUAGE AND LITERATURE 2005

COURSE II

B10 The Archaeology of Anglo-Saxon England, seventh to ninth centuries A.D.

Friday, 20 May, 9.30 am to 12.30 pm

2005

Time allowed - Three hours

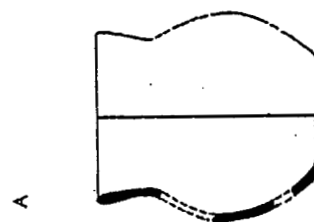
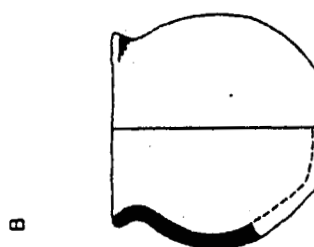
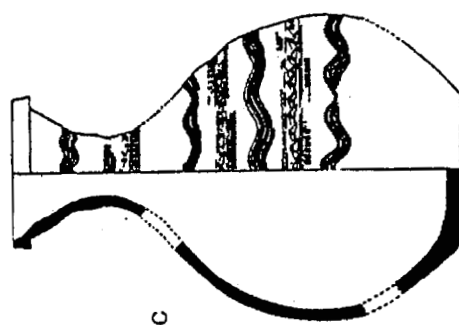
Answer Question 1 and *two* others. You should pay attention in your answers to the precise terms of the questions, and should support your arguments as far as possible with specific primary evidence.

Trinity Term 2005

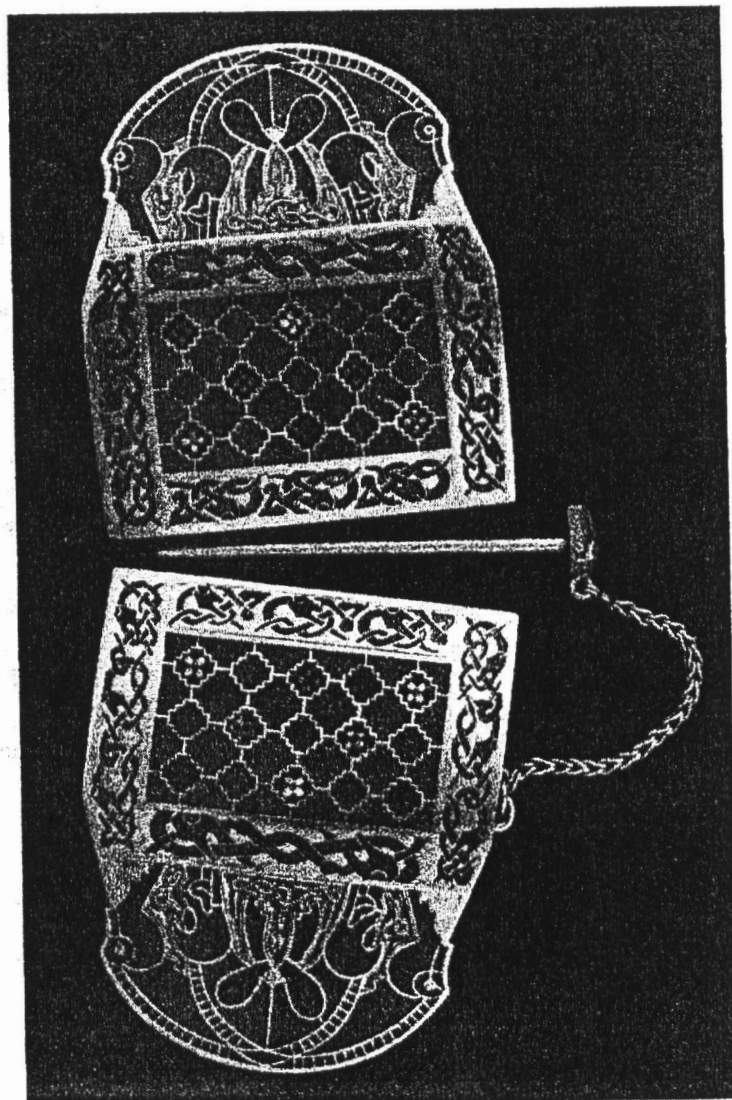
Do not turn over until told that you may do so.

Answer Question 1 and *two* others. You should pay attention in your answers to the precise terms of the questions, and should support your arguments as far as possible with specific primary evidence.

1. Identify and comment on *three* of the objects depicted in the accompanying illustrations.
2. What can the archaeology of this period tell us about Anglo-Saxon attitudes to remains from the Romano-British past?
3. To what extent was the organization of secular settlements in seventh-century England influenced by the needs of ceremonial and ritual?
4. Are the 'princely burials' of c.600-50 necessarily princely?
5. What meanings, if any, would the concept of 'Christian burial' have had for the inhabitants of England in this period?
6. ⁶[I]t is clear that the lay and religious character of relatively high-status settlement sites could be thoroughly confused - something which leaves one wondering whether there is any point in archaeological speculations on the possible monastic character of certain fairly rich eighth-century sites' (JOHN HINES). Do you agree?
7. What can be learnt from the distribution of dress-fittings and other small-finds about economic and cultural contrasts within seventh- to ninth-century England?
8. What changes took place in the iconography of stone sculpture during this period, and what do they tell us about changes in the society that produced it?
9. How important was money in the inland economy of England during c.670-800?
10. Explain the rise and decline of richly decorated liturgical manuscripts during this period.
11. What can we learn about the functions and external contacts of the mid-Saxon settlement of Lundenwic?
12. Were changes in English jewellery during this period more a response to fashion, or to changes in the availability of materials and the development of new techniques?

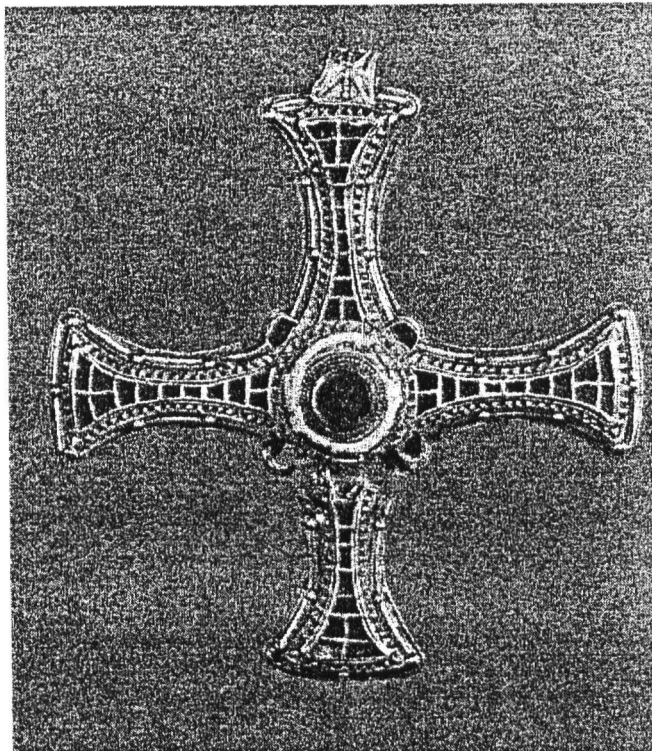


(a)



(b)

DENB 2425



(c)

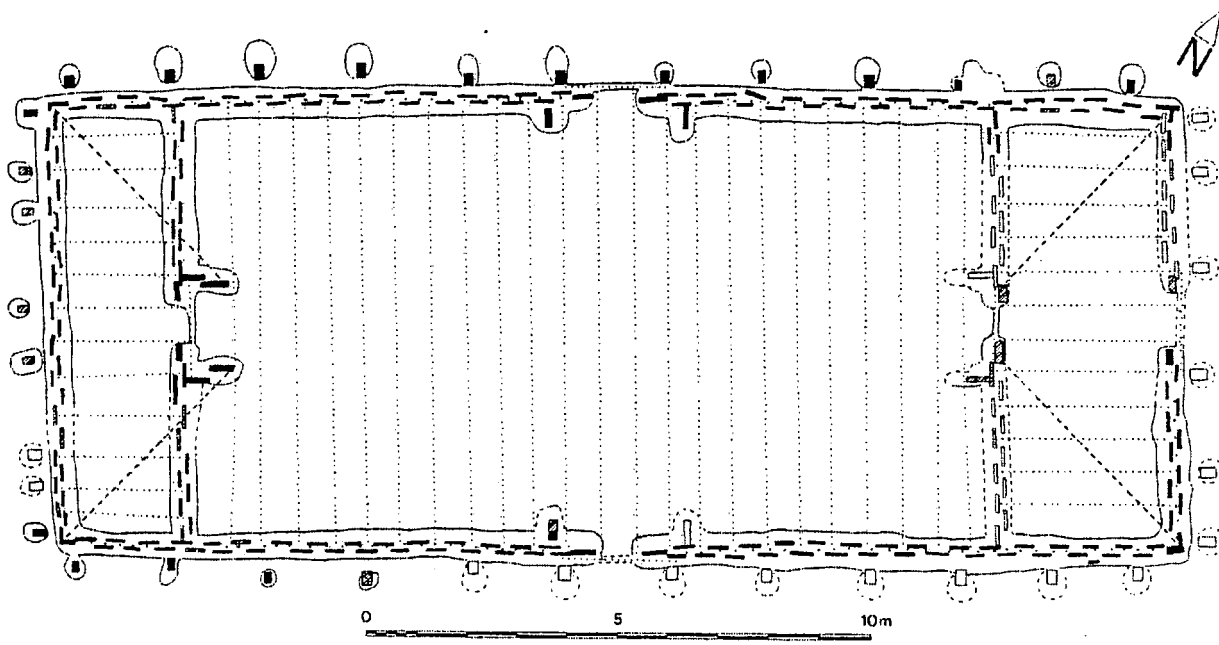
DENB 2425

TURN OVER

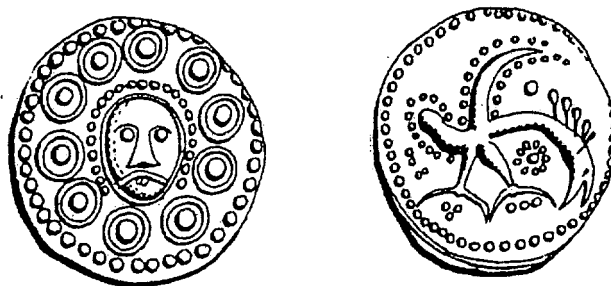


(d)

DENB 2425



(e)



(f)