

VERSION 2 CONCEPT SKETCHES: Layout Plan 1:100@a3

ACCOMMODATION SCHEDULE

Overall External Floor Area:	314.02sqm
Overall Internal Floor Area:	291.04sqm
Social Space:	31.5sqm
Players Changing Areas Only (each):	18.5sqm
Officials Changing Areas Only (each):	4.45sqm

CONCEPTS & IDEAS

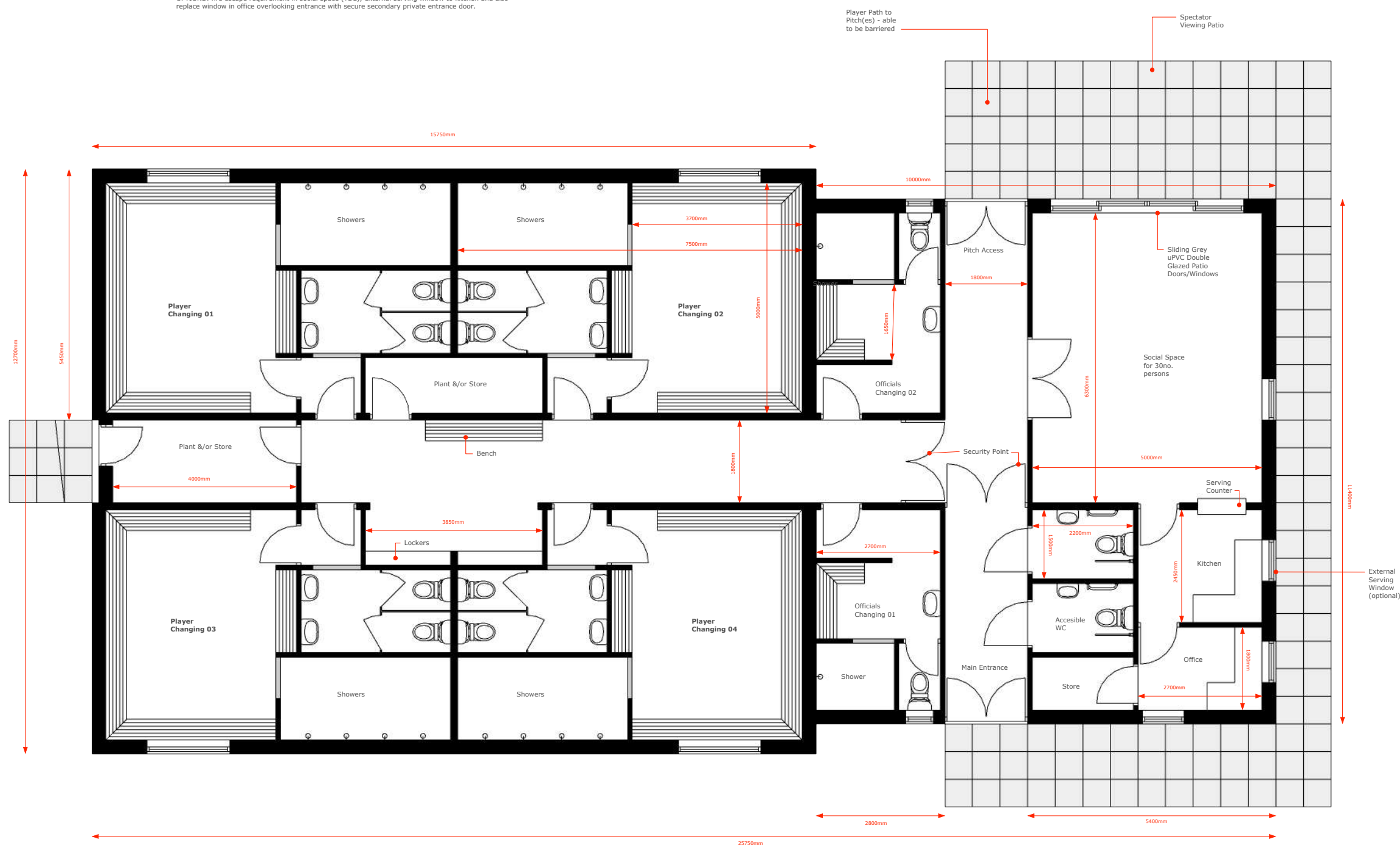
Key primary ideas; simple, efficient, crisp & contemporary in all areas - materials, form & details

Building to be separated into main elements - players & changing vs social & public spaces

Layout enables building to be compartmentalised & therefore ensure security when different areas are needed at different times.

Simple building form makes for efficient building as well as give options for build methods. Simple roof form covers whole footprint with columns used to create sheltered verandas at each of main entrance/exit points.

OPTIONS: fire escape requirement in social space (TBC), external serving window to kitchen and also replace window if office overlooking entrance with secure secondary private entrance door.



FOOTBALL
ARCHITECT



Surfacing Standards Limited
SPORTS PITCH CONSULTANTS



NOTES

Drawings to be used for planning applications
ONLY - do not use as construction drawings.
Take dimensions from notes only.

LAYOUT PLAN 1:100@a3

March 29, 2021

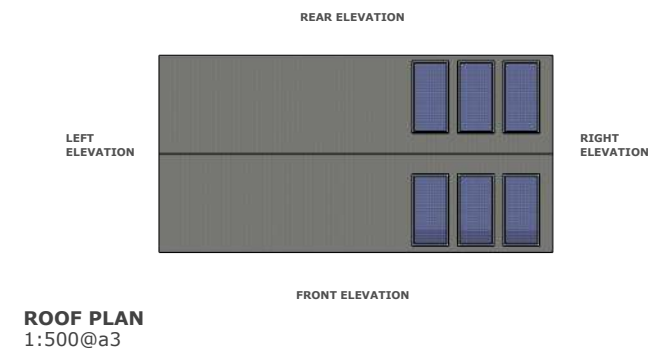
NEWBURY RUGBY CLUB - MONKS LANE - RG14 7RW | **CLUBHOUSE CONCEPTS**

The Football Architect

Maltings Court
Alne
North Yorkshire
YO61 1RW

www.thefootballarchitect.com
info@thefootballarchitect.com
+44 7564 695 859

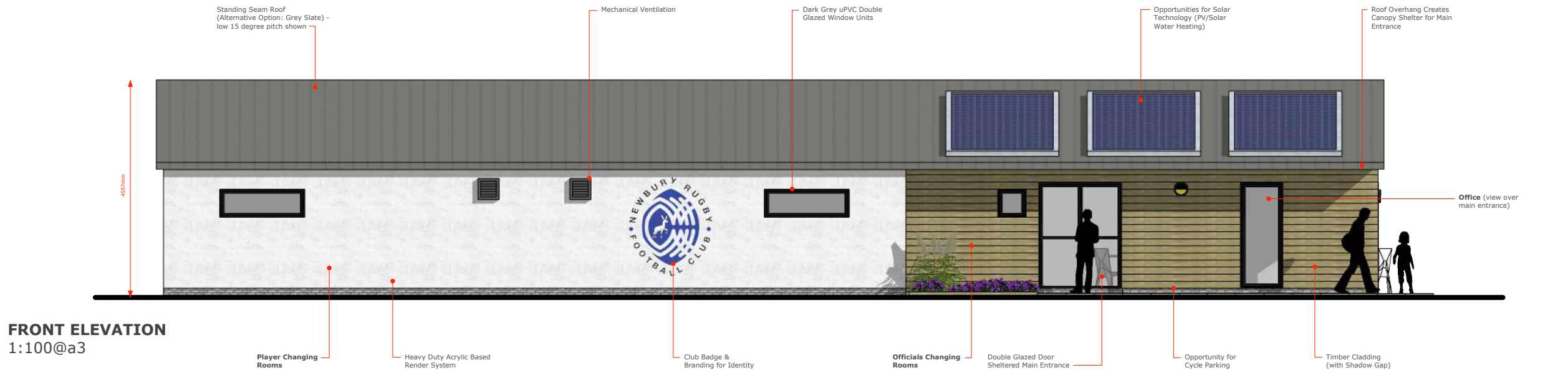
Newbury Rugby Football Club; Clubhouse Project
VERSION 2 CONCEPT SKETCHES: Elevations 1:100@a3



CONTEXT ANALYSIS: Very traditional urban environment with varied materials including tile, timber, render & red brick with red tile & grey slate pitched roofs - predominantly two storey suburban built environment in nearby vicinity



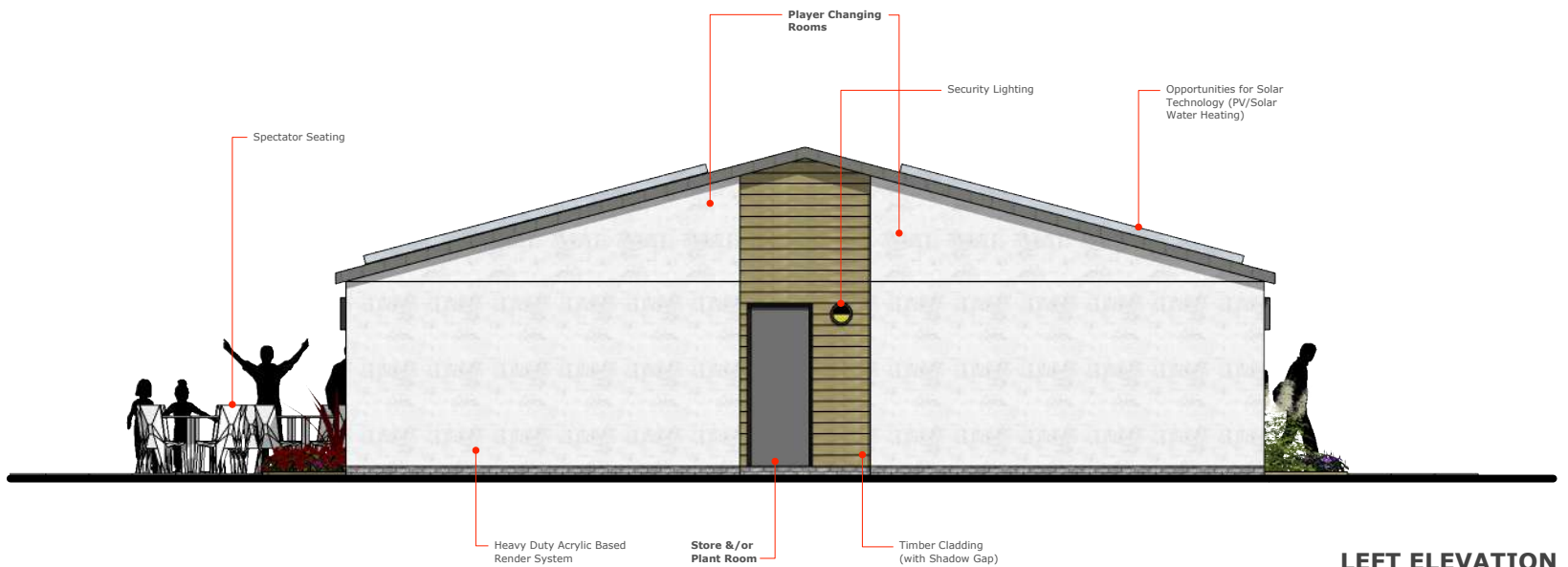
CONTEXT ANALYSIS: Immediate context adjacent to site includes modern large scale sports facilities with barrel vault roof, timber cladding, buff brickwork & white render with monolith style form



EXAMPLE: Standing Seam Metal Roof



EXAMPLE: Acrylic Render System (with Grey Slate Roof)



FOOTBALL
ARCHITECT

SSL
Surfacing Standards Limited
SPORTS PITCH CONSULTANTS



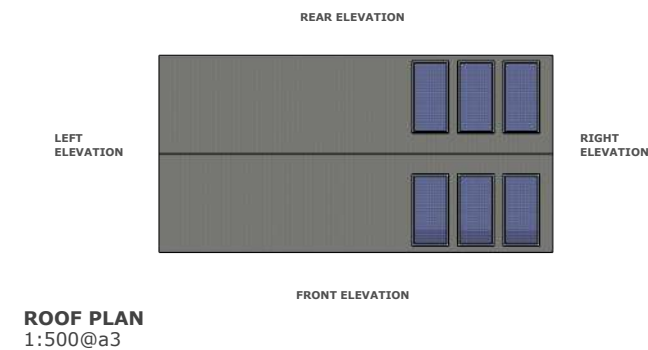
NOTES

Drawings to be used for planning applications ONLY - do not use as construction drawings. Take dimensions from notes only.

The Football Architect
Maltings Court
Aine
North Yorkshire
YO61 1RW

www.thefootballarchitect.com
info@thefootballarchitect.com
+44 7564 695 859

Newbury Rugby Football Club; Clubhouse Project
VERSION 2 CONCEPT SKETCHES: Elevations 1:100@a3



CONTEXT ANALYSIS: Local area dominated by domestic dwellings that include standard housing types plus occasional individual units. Pitched roofs are a constant whilst materials vary from red brick to render



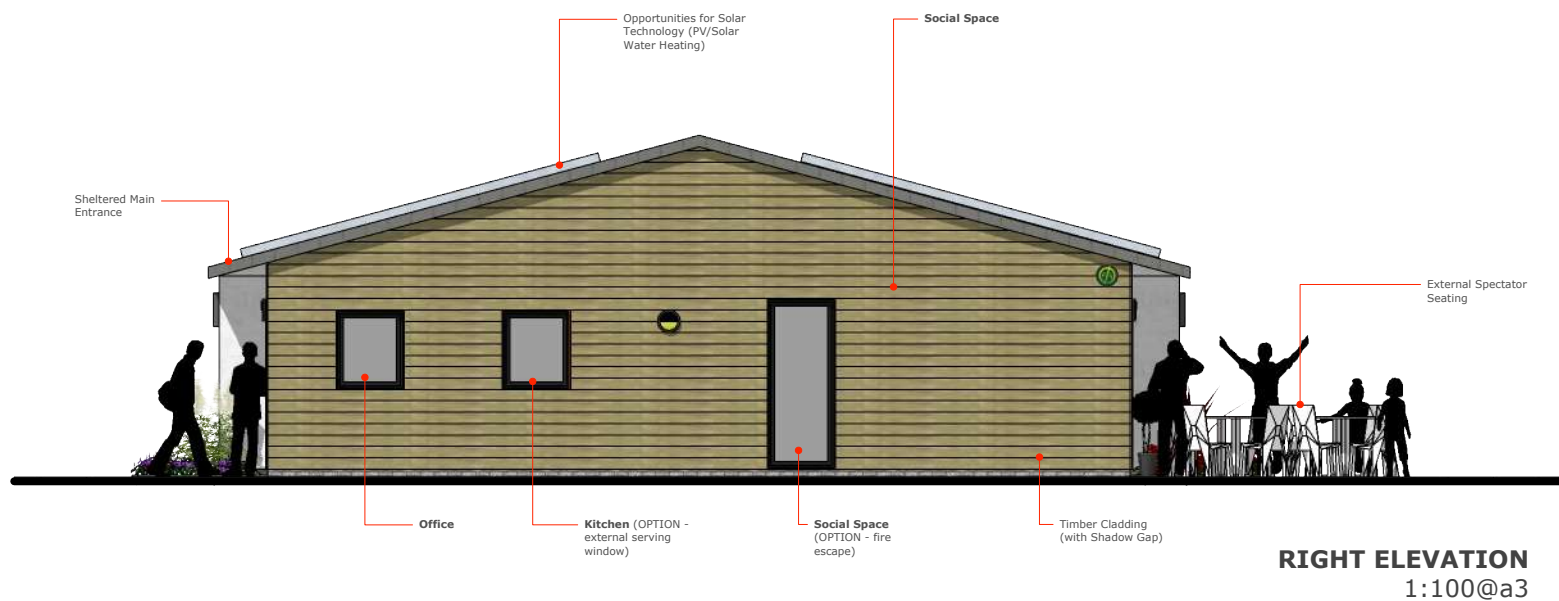
CONTEXT ANALYSIS: Nearby established public buildings are still relatively modest in scale, albeit two storey, and often include more varied architectural features with material combinations



EXAMPLE: Timber Cladding with Grey Windows



EXAMPLE: Timber Frame Construction - then use render panels & timber cladding for speed & cost



FOOTBALL
ARCHITECT



NOTES

Drawings to be used for planning applications ONLY - do not use as construction drawings. Take dimensions from notes only.

The Football Architect

Maltings Court
Aine
North Yorkshire
YO61 1RW

www.thefootballarchitect.com
info@thefootballarchitect.com
+44 7564 695 859

Newbury Rugby Football Club; Clubhouse Project

VERSION 2 CONCEPT SKETCHES: 3D Visuals (not to scale)

CONCEPTS & IDEAS

Key primary ideas; simple, efficient, crisp & contemporary in all areas - materials, form & details

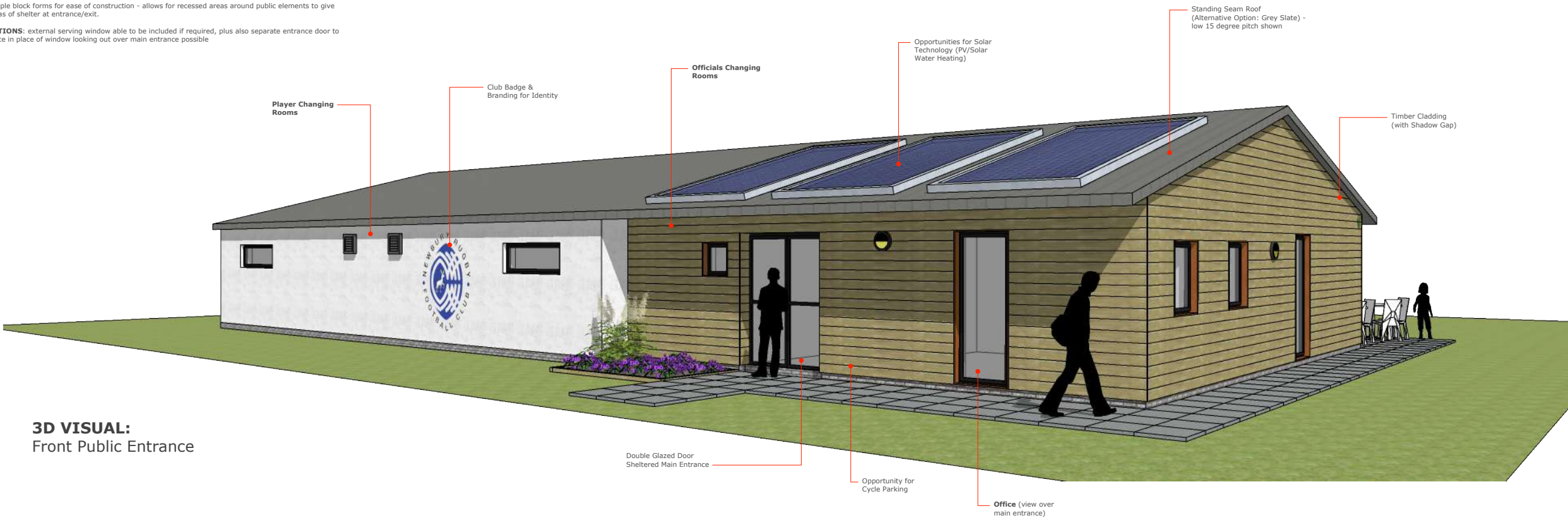
Duo pitch roof is consistent with the surrounding context with one simple form able to cover whole building.

Timber frame construction lends itself to moving away from brickwork and instead to other materials that are more flexible and offer potentially greater speed such as timber and render.

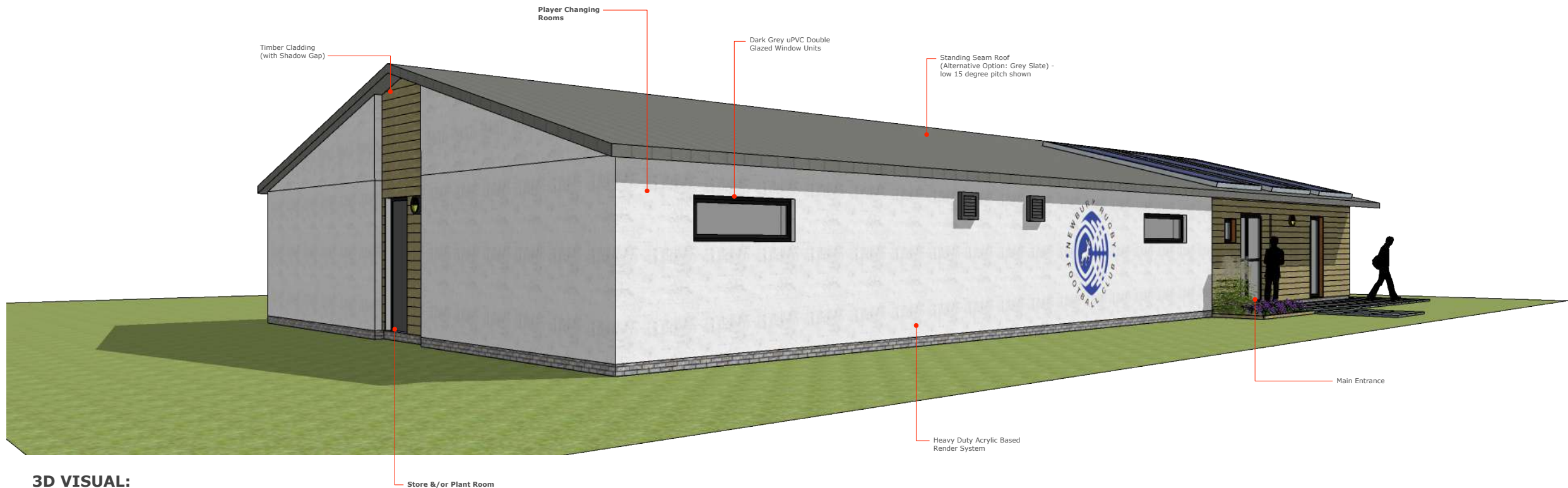
A cool colour palette fits well with the club colours; white, grey, black and blue.

Simple block forms for ease of construction - allows for recessed areas around public elements to give areas of shelter at entrance/exit.

OPTIONS: external serving window able to be included if required, plus also separate entrance door to office in place of window looking out over main entrance possible



3D VISUAL:
Front Public Entrance



3D VISUAL:
Front Changing Room Block



NOTES

Drawings to be used for planning applications ONLY - do not use as construction drawings. Take dimensions from notes only.

The Football Architect
Maltings Court
Aine
North Yorkshire
YO61 1RW

www.thefootballarchitect.com
info@thefootballarchitect.com
+44 7564 695 859

Newbury Rugby Football Club; Clubhouse Project

VERSION 2 CONCEPT SKETCHES: 3D Visuals (not to scale)

CONCEPTS & IDEAS

Key primary ideas; simple, efficient, crisp & contemporary in all areas - materials, form & details

Using timber cladding & heavy duty acrylic render gives a very 'engineered' and crisp finish to the building giving it a contemporary feel. Whilst sport can be considered a 'dirty' activity, there is actually no proximity to the rendered changing room blocks with all exits and entrances moved a small distance away.

Grey uPVC double glazed window and door units also help with the modern aesthetic.

Solar technology can be applied to the roof space with a significant plant room available in the building plus also roof space available.

Shallow pitch roof keeps a low profile for the building and reduces build cost.

OPTIONS: If brickwork is preferred it can be easily included, as can grey slate effect tile roof replacing a metal standing seam option. Special tiles to be suitable for low pitches required though.



3D VISUAL:
Rear Building
Facing Pitch



3D VISUAL:
Rear Public Viewing &
Pitch Access



NOTES

Drawings to be used for planning applications ONLY - do not use as construction drawings. Take dimensions from notes only.

The Football Architect

Maltings Court
Aine
North Yorkshire
YO61 1RW

www.thefootballarchitect.com
info@thefootballarchitect.com
+44 7564 695 859