

Scheduled Monument Quinquennial Condition Assessment Surveys

Aldershot Training Area, Hampshire

Final

July 2021

www.jbaconsulting.com



Landmarc Support Services Ltd

Executive summary

This report details the results of condition surveys undertaken by JBA Consulting on two Scheduled Monuments from a total of two within the boundary of Aldershot Training Area. These monuments include a hillfort and a round barrow cemetery. These are listed and summarised in the table below.

Both monuments were found to be in Fair condition and in Gradual Decline.

The main threats were from scrub encroachment, the storage of logs on two barrows and from erosion on the hillfort of Caesar's Camp.

The round barrow cemetery at Heath Brow is well protected by 'no digging' signs, only a few of which require repair, whilst Caesar's Camp currently has no protection measures in place.

It is recommended that scrub is cleared from both monuments as part of ongoing maintenance. The logs stored on two of the barrows at Heath Brow should be moved off the mounds themselves, and the erosion at Caesar's Camp should be repaired more urgently.

Table 1: Summary of Scheduled Monuments Surveyed

| SM No. | SM Name | 2020/21 Condition | 2020/21 Stability | Previous Condition Survey | |
|---------|--|-------------------|-------------------|---------------------------|-----------|
| | | | | Year | Condition |
| 1016891 | Round barrow cemetery at Heath Brow, Ewshot | Fair | Gradual Decline | 2016 | Fair |
| 1007895 | Large multivallate hillfort and later park pale at Caesar's Camp | Good | Gradual Decline | 2016 | Fair |

Contents

| | | |
|-----|---|------|
| 1 | Introduction and background | 1 |
| 1.1 | Project context | 1 |
| 1.2 | Aldershot Training Area | 1 |
| 2 | Methodology | 2 |
| 2.1 | Survey methodology | 2 |
| 2.2 | Site surveys | 3 |
| 2.3 | Site reporting | 3 |
| 3 | Survey Results | 4 |
| 3.1 | Round barrow cemetery at Heath Brow, Ewshot, 1016891 | 4 |
| 3.2 | Large multivallate hillfort and later park pale at Caesar's Camp, 1007895 | 9 |
| 4 | Summary of results | 15 |
| 4.1 | Monument condition | 15 |
| 4.2 | Monument stability | 15 |
| 4.3 | Monument protection measures | 15 |
| 4.4 | Risks to monuments | 15 |
| 4.5 | Recommended management measures | 15 |
| 4.6 | Conclusions | 16 |
| 5 | Archive | 17 |
| 6 | References | 17 |
| A | Figures..... | XIX |
| B | Photographic Log and Contact Sheet..... | II |
| C | Monument Condition Survey Forms..... | VIII |

List of Figures

Figure 1: Location Plan

List of Tables

| | |
|--|----|
| Table 1: Summary of Scheduled Monuments Surveyed | ii |
| Table 2: Scheduled Monuments surveyed | 3 |
| Table 3: Recommended management measures | 15 |

Abbreviations

| | |
|--------|---|
| BPSS | Baseline Personnel Security Standard |
| CIfA | Chartered Institute for Archaeologists |
| DIO | Defence Infrastructure Organisation |
| GIS | Geographical Information Systems |
| GPS | Global Positioning System |
| HER | Historic Environment Record |
| IRMP | Integrated Rural Management Plan |
| NTEP | National Training Estate Prime (contract) |
| SM | Scheduled Monument |
| WWI/II | World War I / II |

1 Introduction and background

1.1 Project context

JBA Consulting (JBA) were commissioned by Landmarc Support Services Ltd to deliver the on-site condition surveys and reporting as part of Quinquennial Condition Assessment surveys of Scheduled Monuments on the Defence Training Areas and Ranges throughout the United Kingdom. This report details the results of the survey of Aldershot Training Area.

Landmarc have been awarded an extension to the National Training Estate Prime Contract (NTEP) for the management, control and operation of the Defence Training Areas and Ranges. This encompasses management and administration of both the built and rural estate and the provision of hard and soft facilities management services to provide a fully operational estate. The contract extension runs until October 2021.

Part of the NTEP contract requirement is to complete Quinquennial Condition Assessment surveys of Scheduled Monuments to help inform future management and development decisions and provide information for funding bids. The results and recommendations from the surveys are incorporated into the Integrated Rural Management Plans (IRMP) for each training area.

The surveys have been undertaken in accordance with relevant standards and guidance including: JSP 362 Leaflet 12 Historic Environment and the Chartered Institute for Archaeologists Standards and Guidance.

Previous survey reports by WYG (2017) were reviewed to enable comparisons to be made for monuments surveyed.

1.2 Aldershot Training Area

Aldershot Training Area forms part of the Defence Training Estate (DTE) and falls within the South East region. The training area is made up of a diverse mosaic of heathland, conifer woodland, areas of mature and semi-mature broadleaved woodland, mire, scrub, acid grassland and grass meadows. The training area is used for 'dry training' i.e. not using live ammunition. There is extensive public access across the training area.

2 Methodology

2.1 Survey methodology

The survey was undertaken according to the methodology agreed between JBA and Landmarc Support Services in September 2020 in an agreed Project Execution Plan (JBA, 2020). The sites to be surveyed were notified in advance by Landmarc Support Services.

Prior to the on-site surveys, initial research was undertaken to provide background to the sites and included:

- Requesting provision of previous condition survey reports and survey sheets.
- Acquiring current Scheduled Monument list descriptions and locations obtained from the relevant national heritage agency to ensure that the currently designated areas were surveyed in full, and to allow any changes in the extent of Scheduling since the previous survey to be considered.
- Checking sites against national agencies Heritage at Risk Registers.

Figures showing the locations of the Scheduled Monuments surveyed are included in Appendix A.

Site access was arranged in advance to ensure there were no conflicts with proposed training activities and so that appropriate staff could be notified. Arrangements for taking vehicles onto site, and site-specific briefings and health and safety procedures were also confirmed at this time. A site-specific risk assessment was produced based on the generic Risk Assessment approved by JBA's Group Health and Safety Advisor.

All Scheduled Monuments were subject to a field inspection. The quinquennial survey was conducted using the fields on the Heritage Asset Recording Form approved by DIO. This was completed on site via JBA's GISmapp recording app. A single GISmapp entry was completed for each Scheduled Monument. The data collected via GISmapp is hosted on a secure GISmapp web site.

Scheduled Monuments may include a single heritage asset, such as a single long barrow, but others may include composite groups of monuments of the same type, e.g. barrow groups, or different elements within the same Scheduled area, such as earlier barrows within hillforts. For extensive monuments and complexes, or those which comprise multiple elements or groups of discrete monuments, the location and condition of different areas of the Scheduled Monument were assessed at appropriate locations and the form highlights where there is deviation from the overall assessment. Copies of the recording forms are included in Appendix C.

Particular attention was paid to the effects of badgers, rabbits and other animals, excessive vegetation growth and environmental impacts, including exposure and water ingress. Evidence of military activity and effects were also noted. Existing protection measures such as fencing, signage and mesh coverings were identified.

The condition of each monument, including deterioration or improvement was identified during the field visit. It should be noted that whilst all archaeological monuments are likely to be in a state of gradual decline as a result of long term changes from their original construction and continued erosion through natural processes, the assignment of rapid or gradual decline for the purposes of this survey relate to changes which are observable over the quinquennial survey period. An assignment of stable condition therefore implies the rate of decline is very gradual and change is not appreciable over the quinquennial period, rather than no change.

Digital photographs were collected with the tablet (automatically linked to the GISmapp condition form) to illustrate each monument, any areas of damage or concern, and its

context, and were taken as appropriate. Photographs include a scale where appropriate. The photographic log and contact sheet are included in Appendix B, and selected photographs have been used to illustrate the monument descriptions within the main report text.

2.2 Site surveys

The site surveys were conducted on 25th March 2021 by [REDACTED]. The programme for the survey and the sites to be surveyed were dictated by training activities taking place within the establishment. The weather was sunny with occasional heavy showers but did not affect the results of the survey.

Two Scheduled Monuments were surveyed within the boundary of the Aldershot Training Area. These monuments are listed in Table 2.

Table 2: Scheduled Monuments surveyed

| SM No | Monument Name | Grid Reference | Year of Previous Survey |
|---------|--|----------------|-------------------------|
| 1016891 | Round barrow cemetery at Heath Brow, Ewshot | SU 82087 49378 | 2016 |
| 1007895 | Large multivallate hillfort and later park pale at Caesar's Camp | SU 83584 50029 | 2016 |

None of the monuments included in this survey appear on the Historic England Heritage at Risk Register.

2.3 Site reporting

The results of the surveys are reported for each site in section 3 with a summary of the results and management recommendations presented in Section 4. The descriptions of the Scheduled Monuments are based on their list description by the appropriate national agency and supplemented as necessary by observations made in the field.

The results focus on description of relevant damage, threats, assessment of stability, vulnerability, protection measures and management recommendations. This information is drawn from the field observations made during the survey. The results are illustrated by photographs as appropriate.

Copies of the photographic record and completed survey forms are included in Appendices B and C.

3 Survey Results

3.1 Round barrow cemetery at Heath Brow, Ewshot, 1016891

| | | | |
|-----------------------------|---|-------------------|-----------------------------|
| SM No | 1016891 | Other references | |
| Grid reference | SU 82087 49378 | Surveyed | 25/03/2021 |
| Form | Earthwork; Ceremonial / Ritual Site; Upstanding Structure | Landuse | Coniferous Trees |
| MoD facilities | Other-Telecommunications Mast | MoD activities | Manoeuvre Area |
| Monument description | A group of seven barrows in three areas of protection (2 barrows, 1 barrow and 4 barrows). The barrows are 6-18m in diameter and up to 1m high. One of the barrows in the group of four has a WWII pillbox and telecommunications mast built into it. | | |
| Damage to monument | Scrub encroachment, tree damage, logs stored on barrow. | | |
| Overall condition | Fair | Overall stability | Gradual Decline |
| In situ protection measures | 'No Digging' Signs (Average; Good) | | |
| Vulnerability | Low | From what | Scrub and trees |
| | Medium | | Logging and logs on barrows |
| | High | | None |
| Management recommendations | Repair Extant 'No Digging' Signs (Star Signs or Equiv.), Clear Scrub, Clear Trees, Other: Remove logs | | |

The monument comprises a round barrow cemetery of Late Neolithic or Bronze Age date, centred 150m north east of the intersection of the A287 and the B3013. The round barrow cemetery includes seven bowl barrows arranged in two alignments, across three separate areas of protection. The first alignment is made up of areas 1 and 2, and the second alignment made up of area 3. None of the barrows in either alignment includes any trace of a surrounding ditch, although ditches may survive as buried features around each mound. Further features, such as flat graves and urnfields, may survive as buried features between the barrows.

All of the barrows have been hollowed or cut as a result of later excavation and/or by modern military defensive structures and slit trenches. The trenches and pits cut through the barrows were backfilled after a forest fire in 1976. As a result, the profiles of the mounds were substantially altered, raising the height of most by between 0.2 and 0.4m and creating a series of irregular humps and hollows in the surrounding ground.

The first area of protection described includes two bowl barrows of approximately 15-18m in diameter and 1m in height. They are approximately 50m to the south of the second area of protection, made up of a single bowl barrow, and 100m to the east of the third area of protection, made up of four barrows. They currently sit in a small clearing in a wooded area. The previous survey describes that mountain biking damage in the past had resulted

in the use of felled tree trunks laid over the barrow to discourage mountain bikers from riding over the barrows. These tree trunks are still in place over the monument and were interpreted as damage in this survey (Photograph 1). No evidence of mountain bike use was present within the vicinity of the barrows; it is suggested here that moving the logs to surround the barrows would, perhaps, be a better protection measure than laying them over the barrow mounds. There is also evidence of scrub encroachment on both barrows, in the form of bracken (Photograph 2). This scrub does appear to have increased since the previous survey of 2016.



Photograph 1- Logs lying on barrow mound



Photograph 2- Bracken growing on first area of protection

The second area of protection includes a single bowl barrow of approximately 15m in diameter and 0.6m in height (Photograph 3). The single barrow is within the woodland and has large conifers growing on the mound. These trees appeared to be in good condition and not at risk of wind damage or falling at the time of survey. Their clearance in the long term should be considered if the risk of damage increases.



Photograph 3- Single bowl barrow in second area of protection

The most prominent of the two alignments is four closely spaced bowl barrows (Photograph 4), extending north-south for approximately 44m, parallel to the B3013 (Beaconhill Road) which lies 40m to the west. These barrows constitute the third area of protection. The northernmost barrow of this group is the largest and includes a circular mound, 17m in diameter and 1m in height. The remaining three barrows include circular mounds, ranging from 6.5m to 10m in diameter and 0.7m to 1m in height.



Photograph 4- Third area of protection showing four barrows and mast in background

The northernmost barrow has a WWII pillbox constructed in a pit sunk 1.2m into the centre of the mound (Photograph 5). The pit was excavated to, roughly, the original ground surface and the spoil was spread around the sides of the mound, widening the diameter of the barrow by approximately 2m. The pillbox is a pentagonal brick and concrete structure with a steel door on the north side. A concrete drain projects down the south slope of the barrow mound. The pillbox is included within the Scheduled Monument; however, a radio mast erected on top of the pillbox is excluded from the Scheduling. The pillbox on the northern barrow remains in good condition and does not appear to be further affecting the stability of the barrow beneath.



Photograph 5- WWII pillbox on northern barrow



Photograph 6- Scrub encroachment on southern barrows of group of four

All four of these barrows currently show signs of scrub encroachment, though it is most significant on the southern three barrows (Photograph 6). This scrub, in the form of bracken, now almost entirely obscures the three barrows from view and, also, likely provides cover for burrowing animals; though no holes could be seen through the dense vegetation.

All the barrows and areas of protection were demarcated by 'no digging' signs in either good or average condition.

Overall, the monument was found to be in Fair condition and in Gradual Decline. This is the same result as in the previous survey in 2016. The amount of scrub encroachment appears to have increased since the previous survey, though smaller saplings mentioned in the report have been managed well over time. The scrub largely refers to bracken which requires more control in the summer months. As with the previous survey, the third area of protection, constituting four barrows, should be a priority for clearance as this area is most obscured by scrub.

The protection measures in place are adequate as far as signage, though the use of logs to deflect mountain bikers off the group of two bowl barrows should be reconsidered in the longer term. No evidence of mountain biking activity was seen during the survey; use of logs around, rather than on top of, the barrow mounds may be more appropriate to prevent damage to the barrows.

3.2 Large multivallate hillfort and later park pale at Caesar's Camp, 1007895

| | | | |
|-----------------------------|--|-------------------|------------------------------|
| SM No | 1007895 | Other references | |
| Grid reference | SU 83584 50029 | Surveyed | 25/03/2021 |
| Form | Earthwork | Landuse | Heath, Mixed Forestry, Scrub |
| MoD facilities | None | MoD activities | Manoeuvre Area |
| Monument description | A large multivallate hillfort with a level interior. It uses the natural scarp for defences on the north and north-east sides, and banks and ditches elsewhere where it runs across the natural contours of the hill or crosses the plateau. | | |
| Damage to monument | Scrub encroachment, tree damage, erosion. | | |
| Overall condition | Good | Overall stability | Gradual Decline |
| In situ protection measures | None | | |
| Vulnerability | Low | From what | Scrub and trees |
| | Medium | | Bike tracks and erosion |
| | High | | None |
| Management recommendations | Mark Monument With 'No Digging' Signs (Star Signs or Equiv.), Clear Scrub, Clear Trees, Repair Erosion Scars | | |

The monument includes a large multivallate hillfort of Iron Age date situated on an irregular promontory in an elevated location (Photograph 7). In the 11th century, the hillfort formed part of the Farnham estate of the Bishop of Winchester and by the 13th century, the area was part of one of three parks attached to Farnham Castle. The majority of the monument is heathland in character. However, the southern part of the fort, south of the track which runs from the south-west rampart to the eastern corner, is in mixed woodland cover. The monument is within a publicly accessible area and is heavily used by walkers, cyclists and runners.

The hillfort is irregularly shaped and has a large, level interior c.10.5ha in extent, surrounded by a series of banks and ditches which follow the natural contours of the hill, except on the south side where the defences cross a plateau. There are no traces of banks and ditches on the north-west, north and north-east sides of the hillfort; although the natural slope on these sides is steeply scarped.



Photograph 7- Overview of hillfort from the east

On the south and south-eastern side there is a double rampart (Photograph 8). The inner bank measures up to 10m wide and 3m high. The ditch between the inner and outer bank is up to 5m wide and 2m deep. The second bank is 2m high and 6m wide, and the final outer ditch is up to 1m deep. The south corner of the hillfort has three ramparts and traces of a counterscarp bank continuing around to the south-western side of the defences where it crosses the plateau. The defences are at their most pronounced where they cross the plateau. In 1970, a small trench was cut on the western side of the camp. Excavations demonstrated four phases of construction for the defences and that the outer bank and ditch represented a later development of the site from a univallate to a multivallate hillfort.



Photograph 8- Ramparts on south-east side

In addition to the hillfort, there are also the remains of part of a medieval park pale. The park pale survives as a bank and ditch situated along the western edge of the camp, turning south mid-way along the northern edge and re-joining the Iron Age defences for a short length on the southern side of the monument. The external bank is up to 1m high and 2m wide, with an internal ditch c.2.5m wide and 0.5m deep. This park pale also follows the line of the county boundary between Hampshire and Surrey.



Photograph 9- Tracks created by mountain bikes in southern wooded area

A number of tracks and access points are spread across the scheduled area and are heavily used by both the public (on foot and bicycle) and maintenance vehicles. The widest of these tracks runs east to west across the scheduled area and in a loop around the west, north and north-east sides; it is well sealed and in good condition. Further tracks have been created by public users of the site. Whilst these are largely in good condition in the northern portion of the monument, many of the smaller tracks in the southern wooded area are now becoming more eroded by mountain bike use on the site (Photograph 9).



Photograph 10- Older and fallen trees on ramparts in woodland

The woodland itself is largely in good condition and shows signs of being managed well. In the long term, it will be necessary to monitor the older trees on the ramparts for signs of wind damage as they could cause damage if they fall (Photograph 10).



Photograph 11- Area of landslide on north-east side

The northern portion of the monument is much more open than the southern wooded section and is largely covered with gorse and areas of open grass. To the north-east, a small section of the scarp has suffered from landslide in the past and has been blocked with a wooden fence. This area now appears to be stable and grass is regrowing in places (Photograph 11).



Photograph 12- Tall gorse to the east

The gorse covering large areas of the site is managed by a programme of vegetation management across the site; there was evidence of recently cleared areas at the time of survey. Whilst some of this gorse is becoming tall (Photograph 12), it is largely restricted to the central, flat area of the hillfort rather than covering the ramparts, so is less of an issue. This was a suggestion of the previous survey: to concentrate efforts to manage the vegetation on the areas of the hillfort which are more prominent, such as the ramparts, to make better use of resources. The strategy appears to have been largely successful.

Some of the ramparts on the western sides, however, are becoming more obscured by bracken and bramble, rather than gorse. This should also be targeted for vegetation clearance in the medium term, to maintain the views of the ramparts which are very impressive in height in this area. Any works to the vegetation would likely require consultation with the Wildlife Trust and Landmarc/DIO ecologists as the area is ecologically sensitive and designated.



Photograph 13- Extensive erosion of ramparts to the west

Additionally, in this western area, there is further evidence of erosion by walkers and cyclists accessing the site. Some of the paths running through the ramparts have become heavily eroded and have worn away large sections of the ramparts, exposing bare earth, and increasing the likelihood of further erosion by water action (Photograph 13). This erosion, and other such areas in the south-east area where site users access the monument, should be targeted for repairs. This will likely require consent from Historic England and consultation should be sought prior to any works on the Scheduled Monument. Once repaired, the ground should be seeded with grass species in keeping with those currently on site to stabilise the bare ground.



Photograph 14- Bike tracks over ramparts

Other tracks which do not follow the main walking routes appear to have been created by mountain bikers (Photograph 14). These tracks should also be repaired and reseeded to prevent further erosion.

There is currently no signage, such as 'no digging' signs or information boards, in place for the monument. Whilst it is not thought that the monument is at risk from military damage, erosion by walkers, and especially mountain bike use, is becoming more of a problem. Information boards or signage to state that the area is archaeologically important, and is a Scheduled Monument, may be of use to deter users from creating new paths over the ramparts and to keep to the more formal paths. This was also recommended in the previous survey. Signage would ideally be placed at the two most used entrances to the hillfort, at the west and south-east sides.

Overall, the monument was found to be in Fair condition and in Gradual Decline. This is the same as the previous survey in 2016. Since the previous survey, the encroachment of scrub, such as gorse and bracken on the southern and eastern side, appears to have improved with targeted clearance focussed on the ramparts. In the western and northern areas though, the bracken and bramble has increased.

Erosion by walkers and, more importantly, mountain bikers, appears to have worsened since the previous survey and accounts for the biggest threat to the ongoing stability of the monument. This erosion has become quite deep in places and should be targeted for repairs and reseeded followed by installation of signage to notify users of the sites importance and suggestions to stick to formal paths.

The site is very prominent in the landscape and attracts the public as it has extensive views over the surrounding countryside. Whilst this access has the potential to cause damage if allowed to spread across the monument uncontrolled, if properly maintained, the current system of formal paths can cope with a high amount of traffic and remain in largely good condition.

4 Summary of results

4.1 Monument condition

Both monuments recorded in this survey were found to be in Fair condition. In both cases, scrub encroachment was a factor. Whilst the hillfort of Caesar's Camp was also suffering from erosion caused by mountain bike use and walkers.

4.2 Monument stability

Both monuments were also found to be in Gradual Decline. This was again due to scrub encroachment in both cases. The significant erosion on Caesar's Camp is an issue, and the use of logs to deflect mountain bikes off the two barrows at the barrow cemetery at Heath Brow was also a factor.

4.3 Monument protection measures

The round barrow cemetery at Heath Brow is well protected by 'no digging' signs, although some are becoming damaged and require replacement. However, Caesar's Camp hillfort currently has no protection measures in place.

4.4 Risks to monuments

The main risks to the round barrow cemetery at Heath Brow was from scrub encroachment obscuring the barrows and providing cover for burrowing animals, and from logs being laid on two of the barrow mounds to prevent mountain bikers.

The main risks to the hillfort of Caesar's Camp was also from scrub encroachment in certain areas of the ramparts, such as the north and west, and from significant erosion by walkers and mountain bikers which are exposing some areas of the ramparts. This erosion appears to have worsened since the previous survey in 2016 and increases the likelihood of further erosion by water action.

4.5 Recommended management measures

Management recommendations have been made for Scheduled Monuments surveyed and are shown in Table 3. These have been made because the monuments are considered to be in gradual decline and, if the recommendations are not actioned, the monument is likely to deteriorate in condition or stability.

Scheduled Monument Clearance may be required for these works dependent on their location and working method. Advice and confirmation should be sought from Historic England before commencing works.

The following management recommendations are made with respect to the monuments surveyed.

Table 3: Recommended management measures

| SM No | SM Name | Management recommendation | Priority |
|---------|---|---|-----------|
| 1016891 | Round barrow cemetery at Heath Brow, Ewshot | Repair Extant 'No Digging' Signs (Star Signs or Equiv.) | Long Term |
| | | Clear Scrub | Long Term |
| | | Clear Trees | Long Term |
| | | Other: Remove logs | Long Term |

| | | | |
|---------|--|--|-----------|
| 1007895 | Large multivallate hillfort and later park pale at Caesar's Camp | Mark Monument With 'No Digging' Signs (Star Signs or Equiv.) | Long Term |
| | | Clear Scrub | Long Term |
| | | Clear Trees | Long Term |
| | | Repair Erosion S [REDACTED] | Urgent |

4.6 Conclusions

A total of two Scheduled Monuments required Quinquennial condition surveys in the Aldershot Training Area.

Both monuments were found to be in Fair condition and in Gradual Decline.

Both monuments are currently suffering from scrub encroachment in certain areas. It is recommended that this scrub is cleared as part of ongoing management practices to prevent the monuments becoming obscured and to reduce cover for burrowing animals.

Logs are currently being used to deflect mountain bikers off two barrows at Heath Brow, it is recommended that these are moved to surround the barrow rather than being placed on the mound itself where they can damage the monument.

The hillfort of Caesar's Camp is currently also at risk from erosion caused by mountain bike use and walkers. This is becoming significant in certain areas and requires urgent repairs before the damage spreads. The installation of signage or information boards is also recommended for this monument to remind users of the sites significance and to keep to the formal paths which are in better condition.

5 Archive

The archive will be retained by JBA for the duration of the NTEP contract. It will subsequently be deposited with Landmarc Support Services Ltd.

The archive contains the following elements:

- Scanned copies of Monument Condition Survey forms/digital copies of GISMapp records completed on site;
- Digital photographs and a photographic register;
- GIS data and pdf copies of relevant site mapping;
- Results of any previous surveys supplied to JBA by Landmarc;
- Word and pdf copies of the survey reports; and
- Other relevant documentation, including any information received from statutory bodies.

6 References

CIfA (2017) Standard and Guidance for Historic Environment Desk-Based Assessments.

DIO (2010) JSP 362 Leaflet 12 Historic Environment.

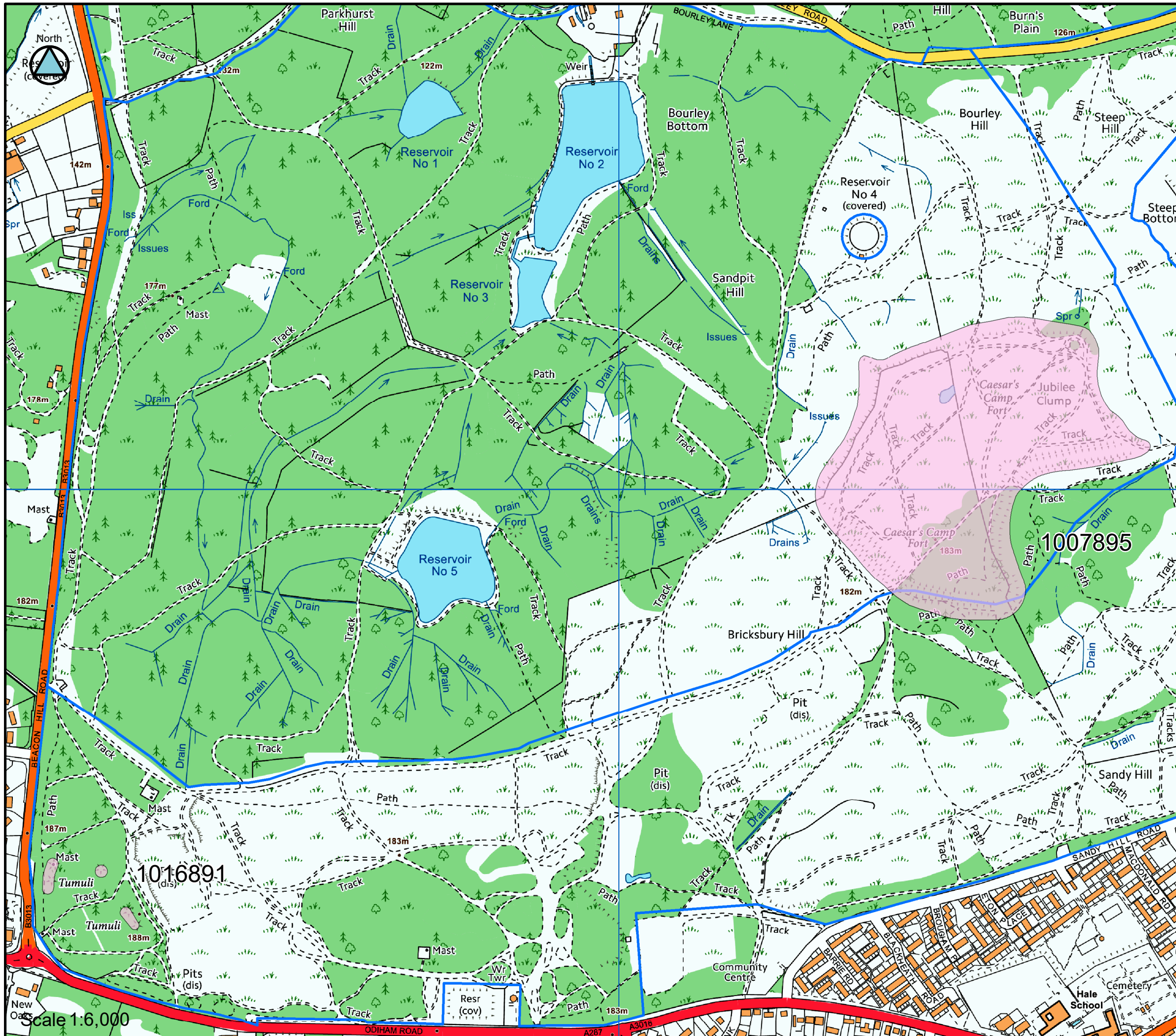
JBA (2020) Provision of Scheduled Monument Quinquennial Surveys, Project Execution Plan.

WYG (2017) Scheduled Monument Quinquennial Surveys- Aldershot Training Area, Hampshire. February 2017.

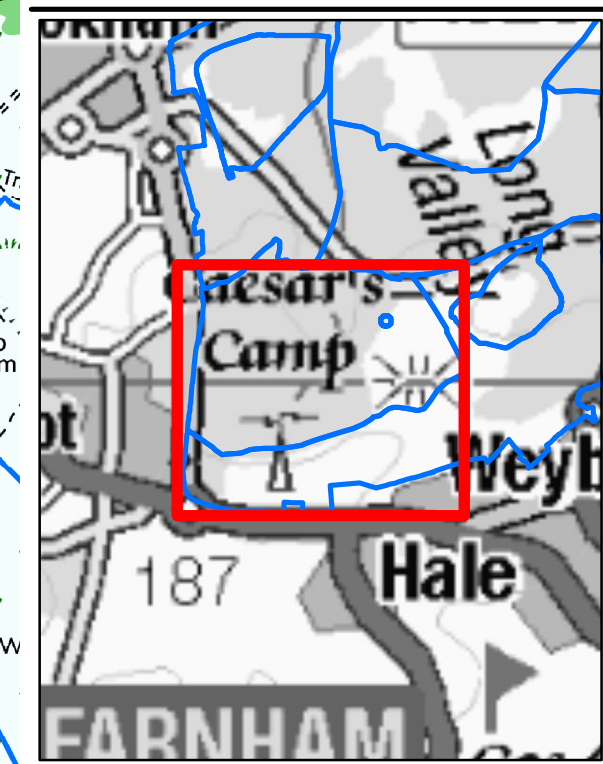
—

Appendices

A Figures



KEYPLAN Scale 1:50,000



LEGEND

- Scheduled Monuments
- Training Area

Contains Ordnance Survey data © Crown Copyright and database right 2021. All rights reserved.



2020s1171 - Quinquennial Surveys
Aldershot Training Area
Figure 1 - 1007895 and 1016891

B Photographic Log and Contact Sheet

| Photo No. | Date | SM No. | Direction | Subject |
|-----------|-------------|---------|-----------|-------------------------------|
| 1 | 25-Mar-2021 | 1016891 | South | Southernmost barrow |
| 2 | 25-Mar-2021 | 1016891 | East | Southernmost barrow |
| 3 | 25-Mar-2021 | 1016891 | North | Southernmost barrow |
| 4 | 25-Mar-2021 | 1016891 | West | Logs on southernmost barrow |
| 5 | 25-Mar-2021 | 1016891 | Southwest | Southernmost barrow |
| 6 | 25-Mar-2021 | 1016891 | North | Logs on second barrow |
| 7 | 25-Mar-2021 | 1016891 | West | Second barrow |
| 8 | 25-Mar-2021 | 1016891 | South | Logs stacked on second barrow |
| 9 | 25-Mar-2021 | 1016891 | Southeast | Second barrow |
| 10 | 25-Mar-2021 | 1016891 | North | Third Barrow |
| 11 | 25-Mar-2021 | 1016891 | West | Third barrow |
| 12 | 25-Mar-2021 | 1016891 | South | Third barrow |
| 13 | 25-Mar-2021 | 1016891 | East | Third barrow |
| 14 | 25-Mar-2021 | 1016891 | North | Western alignment |
| 15 | 25-Mar-2021 | 1016891 | Northwest | Fourth barrow |
| 16 | 25-Mar-2021 | 1016891 | Northwest | Fifth barrow |
| 17 | 25-Mar-2021 | 1016891 | Northwest | Sixth barrow |
| 18 | 25-Mar-2021 | 1016891 | Northwest | Seventh barrow |
| 19 | 25-Mar-2021 | 1016891 | West | No digging sign |
| 20 | 25-Mar-2021 | 1016891 | Southwest | Pillbox on seventh barrow |
| 21 | 25-Mar-2021 | 1016891 | South | Pillbox entrance |

| | | | | |
|----|-------------|---------|-----------|--|
| 22 | 25-Mar-2021 | 1016891 | Southwest | Pillbox |
| 23 | 25-Mar-2021 | 1016891 | Southeast | Pillbox |
| 24 | 25-Mar-2021 | 1016891 | Southeast | Seventh barrow |
| 25 | 25-Mar-2021 | 1016891 | East | Seventh barrow |
| 1 | 25-Mar-2021 | 1007895 | Northwest | Overview of east side |
| 2 | 25-Mar-2021 | 1007895 | West | Access track into east side |
| 3 | 25-Mar-2021 | 1007895 | East | Access track to east |
| 4 | 25-Mar-2021 | 1007895 | West | Access to east |
| 5 | 25-Mar-2021 | 1007895 | West | Bench at top of east access |
| 6 | 25-Mar-2021 | 1007895 | Southeast | Paths east side |
| 7 | 25-Mar-2021 | 1007895 | North | Tall gorse to east |
| 8 | 25-Mar-2021 | 1007895 | Northwest | Trees at east end |
| 9 | 25-Mar-2021 | 1007895 | Southeast | Eroded area at east |
| 10 | 25-Mar-2021 | 1007895 | West | General shot of open area to east side |
| 11 | 25-Mar-2021 | 1007895 | East | View from east end |
| 12 | 25-Mar-2021 | 1007895 | West | Modern cairn at east end |
| 13 | 25-Mar-2021 | 1007895 | Southwest | General shot of northeast |
| 14 | 25-Mar-2021 | 1007895 | South | General shot of interior |
| 15 | 25-Mar-2021 | 1007895 | West | Small ditch on north side |
| 16 | 25-Mar-2021 | 1007895 | Southeast | Cleared area to north |
| 17 | 25-Mar-2021 | 1007895 | Southwest | Cleared area to west |
| 18 | 25-Mar-2021 | 1007895 | South | Western rampart |
| 19 | 25-Mar-2021 | 1007895 | Southwest | Rectangular ditch feature to west |

| | | | | |
|----|-------------|---------|-----------|--|
| 20 | 25-Mar-2021 | 1007895 | South | Eroded section through rampart |
| 21 | 25-Mar-2021 | 1007895 | South | Western ramparts |
| 22 | 25-Mar-2021 | 1007895 | South | Path [REDACTED] ramparts |
| 23 | 25-Mar-2021 | 1007895 | South | Between ramparts |
| 24 | 25-Mar-2021 | 1007895 | West | Eroded path through outer ramparts |
| 25 | 25-Mar-2021 | 1007895 | South | Outer ditch |
| 26 | 25-Mar-2021 | 1007895 | Northeast | Southwest ramparts |
| 27 | 25-Mar-2021 | 1007895 | Southeast | Eroded tracks through ramparts |
| 28 | 25-Mar-2021 | 1007895 | Northeast | Erosion on ramparts |
| 29 | 25-Mar-2021 | 1007895 | Southeast | Gorse and trees at south end of ramparts |
| 30 | 25-Mar-2021 | 1007895 | Northwest | Vehicle track |
| 31 | 25-Mar-2021 | 1007895 | West | South ramparts in woodland |
| 32 | 25-Mar-2021 | 1007895 | Northeast | South inner ramparts |
| 33 | 25-Mar-2021 | 1007895 | East | South ramparts |
| 34 | 25-Mar-2021 | 1007895 | West | South ramparts |
| 35 | 25-Mar-2021 | 1007895 | West | South ramparts |
| 36 | 25-Mar-2021 | 1007895 | Northeast | South ramparts |
| 37 | 25-Mar-2021 | 1007895 | South | South ramparts |
| 38 | 25-Mar-2021 | 1007895 | South | Southeast ramparts |
| 39 | 25-Mar-2021 | 1007895 | Southeast | Vehicle access to southeast |

B.1 Round barrow cemetery at Heath Brow, Ewshot



25



B.2 Large multivallate hillfort and later park pale at Caesar's Camp

1



2



3



4



5



6



7



8



9



10



11



12



13



14

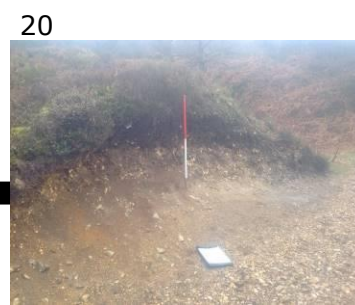


15



16





C Monument Condition Survey Forms



DIO Heritage Asset Condition Survey Form

| | | | | | | | |
|-------------------------------------|----------------|-----------------|-------------------|---------------------------|---------|------------------------|---|
| A. LOCATION Aldershot | | | | | | | |
| NATIONAL MONUMENT RECORD SYSTEM No. | | SMR NO: | | SAM/LB No. | 1016891 | ANY OTHER DESIGNATION: | |
| GRID REF: (CENTRE POINT) | SU 82087 49378 | COUNTRY/ COUNTY | England Hampshire | LOCAL PLANNING AUTHORITY: | | MONUMENT NAME: | Round barrow cemetery at Heath Brow, Ewshot |

| | |
|-----------------------|------------------|
| B. RECORDED BY | |
| SURVEYOR: [REDACTED] | DATE: 25/03/2021 |

| | | | |
|--|-------------------------------------|---|-------------------------------------|
| C: FORM OF MONUMENT PLEASE TICK WHICH BOXES APPLY, CAN BE MORE THAN ONE | | | |
| EARTHWORK | <input checked="" type="checkbox"/> | LEVELLED (E.G. CROPMARKS, PLOUGHED OUT) | <input type="checkbox"/> |
| FINDSPOT | <input type="checkbox"/> | BUILT OVER | <input type="checkbox"/> |
| CARVING/ROCK ART | <input type="checkbox"/> | RELIC/RUINED STRUCTURE | <input type="checkbox"/> |
| UPSTANDING STRUCTURE | <input type="checkbox"/> | CEREMONIAL/RITUAL SITE | <input checked="" type="checkbox"/> |

| | | | |
|--|---|--|----|
| D: FORM OF EARTHWORK*/RELIC STRUCTURAL FEATURE* (USE ONLY FOR EARTHWORKS AND RUINS NOT BUILDINGS AND SUB-SURFACE REMAINS) | | | |
| MAX VERTICAL DIMENSIONS (M): | 1 | % OF ESTIMATED ORIGINAL SITE SURVIVING | 70 |

| E: LAND USE TICK APPROPRIATE BOXES FOR CONDITIONS ON SITE IN COLUMN A AND INDICATE %, TICK COLUMN B TO INDICATE PRESENCE OF OTHER TYPES OF LAND USE WITHIN 10METRES (APPROX. 35 FEET OF SITE) | | | | | | | | | |
|--|------------------|-------------------------------------|-------------------------|---|--------------------------------------|--------------------------|-------------------------------------|-------------------------|---|
| TYPE (TICK APPROPRIATE BOX OR BOXES) | | <input checked="" type="checkbox"/> | (A) ON-SITE % COVER/USE | (B) CLOSE TO SITE (WITHIN 10M) <input checked="" type="checkbox"/> IF PRESENT | TYPE (TICK APPROPRIATE BOX OR BOXES) | | <input checked="" type="checkbox"/> | (A) ON-SITE % COVER/USE | (B) CLOSE TO SITE (WITHIN 10M) <input checked="" type="checkbox"/> IF PRESENT |
| AGRICULTURE: | ARABLE | <input type="checkbox"/> | | | ROAD / TRACK | <input type="checkbox"/> | | | |
| | PASTURE | <input type="checkbox"/> | | | CIVILIAN | <input type="checkbox"/> | | | |
| | BUILDINGS | <input type="checkbox"/> | | | BARE GROUND | <input type="checkbox"/> | | | |
| | GRASSLAND | <input type="checkbox"/> | | | OTHER (SPECIFY) | <input type="checkbox"/> | | | |
| OPEN AREA | MOORLAND | <input type="checkbox"/> | | | | <input type="checkbox"/> | | | |
| | HEATH | <input type="checkbox"/> | | | | <input type="checkbox"/> | | | |
| | DUNE | <input type="checkbox"/> | | | | <input type="checkbox"/> | | | |
| FORESTRY | CONIFEROUS | <input checked="" type="checkbox"/> | 100 | <input checked="" type="checkbox"/> | | <input type="checkbox"/> | | | |
| | DECIDUOUS | <input type="checkbox"/> | | | | <input type="checkbox"/> | | | |
| | MIXED | <input type="checkbox"/> | | | | <input type="checkbox"/> | | | |
| | SCRUB | <input type="checkbox"/> | | | | <input type="checkbox"/> | | | |
| MOD FACILITIES (ON OR CLOSE TO SITE) | | | | | | | | | |
| | BUILDINGS | <input type="checkbox"/> | | | SECURITY FENCE | <input type="checkbox"/> | | | |
| | HARDSTANDINGS | <input type="checkbox"/> | | | LANDSCAPED | <input type="checkbox"/> | | | |
| | RUNWAY | <input type="checkbox"/> | | | NAVAL DOCK | <input type="checkbox"/> | | | |
| | OTHER (SPECIFY): | <input type="checkbox"/> | | | | <input type="checkbox"/> | | | |
| MILITARY ACTIVITY (INDICATE MILITARY ACTIVITY WHERE KNOWN) | | | | | | | | | |
| | MANOEUVRE | <input checked="" type="checkbox"/> | 100 | <input checked="" type="checkbox"/> | DRIVER TRAINING | <input type="checkbox"/> | | | |
| | RECREATIONAL | <input type="checkbox"/> | | | RIFLE RANGES | <input type="checkbox"/> | | | |
| | ENGINEER | <input type="checkbox"/> | | | GARRISON | <input type="checkbox"/> | | | |
| | IMPACT AREA | <input type="checkbox"/> | | | FIBUA/TRAINING | <input type="checkbox"/> | | | |
| | CAMPS | <input type="checkbox"/> | | | AIRFIELD | <input type="checkbox"/> | | | |
| | DROP ZONE | <input type="checkbox"/> | | | OTHER (SPECIFY): | <input type="checkbox"/> | | | |

DIO Heritage Asset Condition Survey Form

F: DAMAGE TO SITE/STRUCTURE AND IMMEDIATE LOCALITY; IN (A) TICK APPROPRIATE BOX TO INDICATE DAMAGE ON-SITE AND NOTE APPROXIMATE PERCENTAGE OF SITE AFFECTED. NOTE IF DAMAGE IS CURRENT WITHIN THE LAST YEAR, RECENT WITHIN LAST 3 YEARS OR OLD MORE THAN 3 YEARS). IN (B) SIMPLY TICK TO INDICATE PRESENCE OF TYPE OF DAMAGE WITHIN 10METRES (35 FEET OF MONUMENT)

| | (A) DIRECTLY ON MONUMENT (ESTIMATE % DISTURBED) | | | | | | (B) WITHIN 10M OF MONUMENT ✓ IF PRESENT | | |
|---------------------------------|--|-----|--------|---|-----|---|--|--------|-----|
| | CURRENT | | RECENT | | OLD | | CURRENT | RECENT | OLD |
| VEHICLE DAMAGE | | % | | % | | % | | | |
| TREE DAMAGE (WIND BLOW) | ✓ | 20% | | % | | % | ✓ | | |
| DIGGING | | % | | % | | % | | | |
| SHELLING | | % | | % | | % | | | |
| SCRUB ENCROACHMENT | ✓ | 50% | | % | | % | ✓ | | |
| OVERGRAZING | | % | | % | | % | | | |
| BURROWING ANIMALS – BADGER | | % | | % | | % | | | |
| BURROWING ANIMALS – RABBITS | | % | | % | | % | | | |
| BURROWING ANIMALS - MOLES | | % | | % | | % | | | |
| WATER EROSION | | % | | % | | % | | | |
| PLOUGHING | | % | | % | | % | | | |
| FOOTPATH EROSION | | % | | % | | % | | | |
| TIPPING | | % | | % | | % | | | |
| DEVELOPMENT ENCROACHMENT | | % | | % | | % | | | |
| COLLAPSE OF STRUCTURAL FEATURES | | % | | % | | % | N/A | N/A | N/A |
| REMOVAL OF STRUCTURAL MATERIAL | | % | | % | | % | N/A | N/A | N/A |
| OTHER (SPECIFY IN FREE TEXT) | ✓ | 30% | | % | | % | | | |
| FREE TEXT | LOGS STACKED ON MONUMENT | | | | | | | | |

G: MONUMENT CONDITION TICK APPROPRIATE BOX

| | | | | | | | | |
|-----------|--|------|--|------|--|---|------|--|
| NOT FOUND | | GOOD | | FAIR | | ✓ | POOR | |
|-----------|--|------|--|------|--|---|------|--|

H: STABILITY TICK APPROPRIATE BOX TO INDICATE FIRST IMPRESSION IF THIS IS THE FIRST TIME A CONDITION FORM HAS BEEN COMPILED FOR THIS MONUMENT OR THE CHANGE SINCE LAST CONDITION MONITORING

| | | | | | | | | | |
|------------------|--|---------------|--|-----------------|---|--------|--|-----------|--|
| NO LONGER EXTANT | | RAPID DECLINE | | GRADUAL DECLINE | ✓ | STABLE | | IMPROVING | |
|------------------|--|---------------|--|-----------------|---|--------|--|-----------|--|

I: IN SITU PROTECTIVE MEASURES tick where appropriate to indicate presence and condition of protective measures

IF NONE PRESENT TICK HERE:

| | GOOD CONDITION | AVERAGE CONDITION | POOR CONDITION |
|-------------------------------------|----------------|-------------------|----------------|
| NO DIGGING (STAR) OR SIGNS | ✓ | ✓ | |
| NO VEHICLE SIGNS | | | |
| AGRICULTURAL PENNING | | | |
| PALISADED | | | |
| DRAGONS TEETH | | | |
| FENCED | | | |
| SCREEN OF TREES | | | |
| TEMPORARY REPAIR/SUPPORT | | | |
| BURROWING ANIMAL CONTROL | | | |
| OTHER (SPECIFY TYPE AND CONDITION): | | | |

J: VULNERABILITY TICK RELEVANT BOX AND ADD DETAIL TO DESCRIBE ANY OBSERVED THREATS MAN MADE OR NATURAL

IF NOT CONSIDERED VULNERABLE TICK HERE:

| | | |
|--------|---|--|
| LOW | ✓ | FROM WHAT: SCRUB AND TREES |
| MEDIUM | ✓ | FROM WHAT: LOGGING AND LOGS ON BARROWS |
| HIGH | | FROM WHAT: NONE |

DIO Heritage Asset Condition Survey Form

| | | | |
|---|-------------|------------|---|
| K : PHOTOGRAPHS PLEASE TICK TYPE OF PHOTO TAKEN DURING MONITORING VISIT AND NOTE WHERE THIS IS HELD AND ANY REFERENCE NUMBER GIVEN | | | |
| COL. SLIDE: | COL. PRINT: | B&W PRINT: | DIGITAL: <input checked="" type="checkbox"/> PROJECT ARCHIVES |

| L: MANAGEMENT RECOMMENDATIONS TICK INITIAL IDEAS REQUIRED FOR MANAGEMENT ACTION, THIS WILL BE REFERRED ON FOR APPRAISAL AND ACTION. | | |
|--|---|--|
| RECOMMEND ACTIONS REQUIRED TO ENHANCE MANAGEMENT | TICK AS MANY AS REQUIRED AND DEFINE URGENCY | |
| MANAGEMENT ACTION | REQUIRED (TICK) | TIMESCALE (URGENT, MEDIUM TERM, LONG TERM) |
| PREPARE MANAGEMENT PLAN | | |
| MARK MONUMENT WITH 'NO DIGGING' SIGNS (STAR SIGNS OR EQUIV.) | | |
| MARK MONUMENT WITH 'NO VEHICLE' SIGNS | | |
| REPAIR EXTANT 'NO DIGGING' SIGNS (STAR SIGNS OR EQUIV.) | ✓ | LONG TERM |
| REPAIR EXTANT 'NO VEHICLE' SIGNS | | |
| RESTRICT ACCESS – ENCLOSE WITHIN FENCE | | |
| RESTRICT ACCESS – ENCLOSE WITHIN PALISADE | | |
| REPAIR PROTECTIVE FENCE | | |
| REPAIR PROTECTIVE PALISADE | | |
| DEFLECT VEHICLES OFF MONUMENT – DRAGON'S TEETH | | |
| DIVERT VEHICLE TRACK OFF MONUMENT | | |
| HARDEN EARTH TRACKS OVER OR IN VICINITY OF MONUMENT | | |
| DIVERT FOOTPATH OFF MONUMENT | | |
| CLEAR SCRUB | ✓ | LONG TERM |
| CLEAR TREES | ✓ | LONG TERM |
| REMOVE VEGETATION OFF STRUCTURAL FEATURES | | |
| MAKE SAFE STRUCTURAL FEATURES | | |
| SHAPE PLANTATION TO REMOVE RISK TO MONUMENT | | |
| CONTROL RABBITS | | |
| CONTROL MOLES | | |
| RELOCATE BADGERS | | |
| REMOVE FROM PLOUGHING | | |
| REDUCE STOCKING LEVELS | | |
| RELOCATE FENCE/S | | |
| RELOCATE TROUGH/S | | |
| RELOCATE GATE/S | | |
| ENTER INTO MANAGEMENT AGREEMENT WITH TENANT FARMER | | |
| PURSUE COUNTRYSIDE STEWARDSHIP GRANT | | |
| REPAIR EROSION SCARS | | |
| MOVE TARGETS | | |
| MARK ON ESTABLISHMENT MAP | | |
| BRING TO ATTENTION OF SITE USERS DURING BRIEFINGS | | |

| |
|--|
| <p>M : NOTES</p> <p>LOGS STORED ON SE AREA BARROWS, SOME SCRUB NOW COVERING. SINGLE BARROW IN TREES BUT IN GOOD CONDITION, NO DAMAGE SEEN. FOUR BARROWS TO WEST COVERED WITH SCRUB. PILLBOX IN GOOD CONDITION.</p> <p>PREVIOUS CONDITION: FAIR</p> <p>TARGET NOTES:</p> |
|--|

DIO Heritage Asset Condition Survey Form

| | | | | | | | |
|-------------------------------------|----------------|-----------------|-------------------|---------------------------|---------|------------------------|--|
| A. LOCATION Aldershot | | | | | | | |
| NATIONAL MONUMENT RECORD SYSTEM No. | | SMR NO: | | SAM/LB No. | 1007895 | ANY OTHER DESIGNATION: | |
| GRID REF: (CENTRE POINT) | SU 83584 50029 | COUNTRY/ COUNTY | England Hampshire | LOCAL PLANNING AUTHORITY: | | MONUMENT NAME: | Large multivallate hillfort and later park pale at Caesar's Camp |

| | | | |
|-----------------------|-------------|-------|------------|
| B. RECORDED BY | | | |
| SURVEYOR: | MATTHEW AMY | DATE: | 25/03/2021 |

| | | | |
|---|---|---|--|
| C: FORM OF MONUMENT <small>PLEASE TICK WHICH BOXES APPLY, CAN BE MORE THAN ONE</small> | | | |
| EARTHWORK | ✓ | LEVELLED (E.G. CROPMARKS, PLOUGHED OUT) | |
| FINDSPOT | | BUILT OVER | |
| CARVING/ROCK ART | | RELIC/RUINED STRUCTURE | |
| UPSTANDING STRUCTURE | | CEREMONIAL/RITUAL SITE | |

| | | | |
|---|----|--|----|
| D: FORM OF EARTHWORK*/RELIC STRUCTURAL FEATURE* <small>(USE ONLY FOR EARTHWORKS AND RUINS NOT BUILDINGS AND SUB-SURFACE REMAINS)</small> | | | |
| MAX VERTICAL DIMENSIONS (M): | 15 | % OF ESTIMATED ORIGINAL SITE SURVIVING | 70 |

| E: LAND USE <small>TICK APPROPRIATE BOXES FOR CONDITIONS ON SITE IN COLUMN A AND INDICATE %, TICK COLUMN B TO INDICATE PRESENCE OF OTHER TYPES OF LAND USE WITHIN 10METRES (APPROX. 35 FEET OF SITE)</small> | | | | | | | | | |
|---|------------------|---|----------------------------|---|--|--|---|----------------------------|---|
| TYPE (TICK APPROPRIATE BOX OR BOXES) | | ✓ | (A) ON-SITE % COVER/USE | (B) CLOSE TO SITE (WITHIN 10M) ✓ IF PRESENT | TYPE (TICK APPROPRIATE BOX OR BOXES) | | ✓ | (A) ON-SITE % COVER/USE | (B) CLOSE TO SITE (WITHIN 10M) ✓ IF PRESENT |
| AGRICULTURE: | ARABLE | | | | ROAD / TRACK | | | | |
| | PASTURE | | | | CIVILIAN | | | | |
| | BUILDINGS | | | | BARE GROUND | | | | |
| | GRASSLAND | | | | OTHER (SPECIFY) | | | | |
| OPEN AREA | MOORLAND | | | | | | | | |
| | HEATH | ✓ | 50 | ✓ | | | | | |
| | DUNE | | | | | | | | |
| FORESTRY | CONIFEROUS | | | | | | | | |
| | DECIDUOUS | | | | | | | | |
| | MIXED | ✓ | 20 | ✓ | | | | | |
| | SCRUB | ✓ | 30 | ✓ | | | | | |
| MOD FACILITIES (ON OR CLOSE TO SITE) | | | | | | | | | |
| | BUILDINGS | | | | SECURITY FENCE | | | | |
| | HARDSTANDINGS | | | | LANDSCAPED | | | | |
| | RUNWAY | | | | NAVAL DOCK | | | | |
| | OTHER (SPECIFY): | | | | | | | | |
| MILITARY ACTIVITY (INDICATE MILITARY ACTIVITY WHERE KNOWN) | | | | | | | | | |
| | MANOEUVRE | ✓ | 100 | ✓ | DRIVER TRAINING | | | | |
| | RECREATIONAL | | | | RIFLE RANGES | | | | |
| | ENGINEER | | | | GARRISON | | | | |
| | IMPACT AREA | | | | FIBUA/TRAINING | | | | |
| | CAMPS | | | | AIRFIELD | | | | |
| | DROP ZONE | | | | OTHER (SPECIFY): | | | | |

DIO Heritage Asset Condition Survey Form

F: DAMAGE TO SITE/STRUCTURE AND IMMEDIATE LOCALITY; IN (A) TICK APPROPRIATE BOX TO INDICATE DAMAGE ON-SITE AND NOTE APPROXIMATE PERCENTAGE OF SITE AFFECTED. NOTE IF DAMAGE IS CURRENT WITHIN THE LAST YEAR, RECENT WITHIN LAST 3 YEARS OR OLD MORE THAN 3 YEARS). IN (B) SIMPLY TICK TO INDICATE PRESENCE OF TYPE OF DAMAGE WITHIN 10METRES (35 FEET OF MONUMENT)

| | (A) DIRECTLY ON MONUMENT (ESTIMATE % DISTURBED) | | | | | | (B) WITHIN 10M OF MONUMENT ✓ IF PRESENT | | |
|---------------------------------|--|-----|--------|---|-----|---|--|--------|-----|
| | CURRENT | | RECENT | | OLD | | CURRENT | RECENT | OLD |
| VEHICLE DAMAGE | | % | | % | | % | | | |
| TREE DAMAGE (WIND BLOW) | ✓ | 20% | | % | | % | ✓ | | |
| DIGGING | | % | | % | | % | | | |
| SHELLING | | % | | % | | % | | | |
| SCRUB ENCROACHMENT | ✓ | 60% | | % | | % | ✓ | | |
| OVERGRAZING | | % | | % | | % | | | |
| BURROWING ANIMALS – BADGER | | % | | % | | % | | | |
| BURROWING ANIMALS – RABBITS | | % | | % | | % | | | |
| BURROWING ANIMALS - MOLES | | % | | % | | % | | | |
| WATER EROSION | | % | | % | | % | | | |
| PLOUGHING | | % | | % | | % | | | |
| FOOTPATH EROSION | ✓ | 10% | | % | | % | | | |
| TIPPING | | % | | % | | % | | | |
| DEVELOPMENT ENCROACHMENT | | % | | % | | % | | | |
| COLLAPSE OF STRUCTURAL FEATURES | | % | | % | | % | N/A | N/A | N/A |
| REMOVAL OF STRUCTURAL MATERIAL | | % | | % | | % | N/A | N/A | N/A |
| OTHER (SPECIFY IN FREE TEXT) | | % | | % | | % | | | |
| FREE TEXT | | | | | | | | | |

G: MONUMENT CONDITION TICK APPROPRIATE BOX

| | | | | | | | |
|-----------|--|------|---|------|--|------|--|
| NOT FOUND | | GOOD | ✓ | FAIR | | POOR | |
|-----------|--|------|---|------|--|------|--|

H: STABILITY TICK APPROPRIATE BOX TO INDICATE FIRST IMPRESSION IF THIS IS THE FIRST TIME A CONDITION FORM HAS BEEN COMPILED FOR THIS MONUMENT OR THE CHANGE SINCE LAST CONDITION MONITORING

| | | | | | | | | | |
|------------------|--|---------------|--|-----------------|---|--------|--|-----------|--|
| NO LONGER EXTANT | | RAPID DECLINE | | GRADUAL DECLINE | ✓ | STABLE | | IMPROVING | |
|------------------|--|---------------|--|-----------------|---|--------|--|-----------|--|

I: IN SITU PROTECTIVE MEASURES tick where appropriate to indicate presence and condition of protective measures

IF NONE PRESENT TICK HERE: ✓

| | GOOD CONDITION | AVERAGE CONDITION | POOR CONDITION |
|-------------------------------------|----------------|-------------------|----------------|
| NO DIGGING (STAR) OR SIGNS | | | |
| NO VEHICLE SIGNS | | | |
| AGRICULTURAL PENNING | | | |
| PALISADED | | | |
| DRAGONS TEETH | | | |
| FENCED | | | |
| SCREEN OF TREES | | | |
| TEMPORARY REPAIR/SUPPORT | | | |
| BURROWING ANIMAL CONTROL | | | |
| OTHER (SPECIFY TYPE AND CONDITION): | | | |

J: VULNERABILITY TICK RELEVANT BOX AND ADD DETAIL TO DESCRIBE ANY OBSERVED THREATS MAN MADE OR NATURAL

IF NOT CONSIDERED VULNERABLE TICK HERE:

| | | |
|--------|---|------------------------------------|
| LOW | ✓ | FROM WHAT: SCRUB AND TREES |
| MEDIUM | ✓ | FROM WHAT: BIKE TRACKS AND EROSION |
| HIGH | | FROM WHAT: NONE |

DIO Heritage Asset Condition Survey Form

| | | | |
|---|-------------|------------|---|
| K : PHOTOGRAPHS PLEASE TICK TYPE OF PHOTO TAKEN DURING MONITORING VISIT AND NOTE WHERE THIS IS HELD AND ANY REFERENCE NUMBER GIVEN | | | |
| COL. SLIDE: | COL. PRINT: | B&W PRINT: | DIGITAL: <input checked="" type="checkbox"/> PROJECT ARCHIVES |

| L: MANAGEMENT RECOMMENDATIONS TICK INITIAL IDEAS REQUIRED FOR MANAGEMENT ACTION, THIS WILL BE REFERRED ON FOR APPRAISAL AND ACTION. | | |
|--|---|--|
| RECOMMEND ACTIONS REQUIRED TO ENHANCE MANAGEMENT | TICK AS MANY AS REQUIRED AND DEFINE URGENCY | |
| MANAGEMENT ACTION | REQUIRED (TICK) | TIMESCALE (URGENT, MEDIUM TERM, LONG TERM) |
| PREPARE MANAGEMENT PLAN | | |
| MARK MONUMENT WITH 'NO DIGGING' SIGNS (STAR SIGNS OR EQUIV.) | ✓ | LONG TERM |
| MARK MONUMENT WITH 'NO VEHICLE' SIGNS | | |
| REPAIR EXTANT 'NO DIGGING' SIGNS (STAR SIGNS OR EQUIV.) | | |
| REPAIR EXTANT 'NO VEHICLE' SIGNS | | |
| RESTRICT ACCESS – ENCLOSE WITHIN FENCE | | |
| RESTRICT ACCESS – ENCLOSE WITHIN PALISADE | | |
| REPAIR PROTECTIVE FENCE | | |
| REPAIR PROTECTIVE PALISADE | | |
| DEFLECT VEHICLES OFF MONUMENT – DRAGON'S TEETH | | |
| DIVERT VEHICLE TRACK OFF MONUMENT | | |
| HARDEN EARTH TRACKS OVER OR IN VICINITY OF MONUMENT | | |
| DIVERT FOOTPATH OFF MONUMENT | | |
| CLEAR SCRUB | ✓ | LONG TERM |
| CLEAR TREES | ✓ | LONG TERM |
| REMOVE VEGETATION OFF STRUCTURAL FEATURES | | |
| MAKE SAFE STRUCTURAL FEATURES | | |
| SHAPE PLANTATION TO REMOVE RISK TO MONUMENT | | |
| CONTROL RABBITS | | |
| CONTROL MOLES | | |
| RELOCATE BADGERS | | |
| REMOVE FROM PLOUGHING | | |
| REDUCE STOCKING LEVELS | | |
| RELOCATE FENCE/S | | |
| RELOCATE TROUGH/S | | |
| RELOCATE GATE/S | | |
| ENTER INTO MANAGEMENT AGREEMENT WITH TENANT FARMER | | |
| PURSUE COUNTRYSIDE STEWARDSHIP GRANT | | |
| REPAIR EROSION SCARS | ✓ | URGENT |
| MOVE TARGETS | | |
| MARK ON ESTABLISHMENT MAP | | |
| BRING TO ATTENTION OF SITE USERS DURING BRIEFINGS | | |

| |
|---|
| <p>M : NOTES</p> <p>AREA IS VERY LARGE SO ONGOING MANAGEMENT OF SCRUB AND TREES ONLY. EROSION BY WALKERS AND BIKES ARE CAUSING MOST DAMAGE TO RAMPARTS. NO CURRENT SIGNAGE.</p> <p>PREVIOUS CONDITION: FAIR</p> <p>TARGET NOTES:</p> |
|---|

Offices at

Coleshill
Doncaster
Dublin
Edinburgh
Exeter
Glasgow
Haywards Heath
Isle of Man
Limerick
Newcastle upon Tyne
Newport
Peterborough
Saltaire
Skipton
Tadcaster
Thirsk
Wallingford
Warrington

Registered Office
1 Broughton Park
Old Lane North
Broughton
Skipton
BD23 3FD
United Kingdom

+44(0)1756 799919
info@jbaconsulting.com
www.jbaconsulting.com
Follow us:  

Jeremy Benn Associates Limited

Registered in England 3246693

JBA Group Ltd is certified to:
ISO 9001:2015
ISO 14001:2015
ISO 27001:2013
ISO 45001:2018

