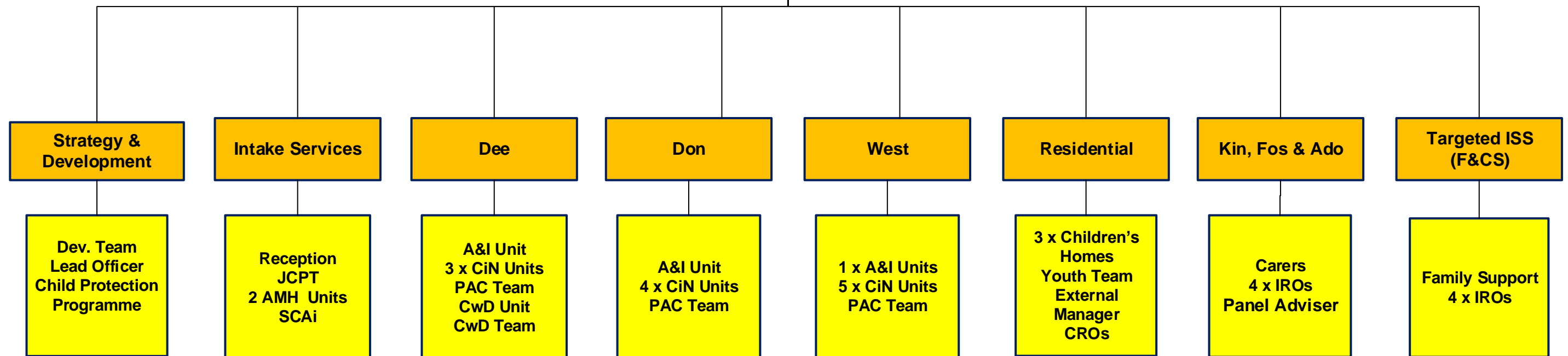


**Chief Operating
Officer
Operations**

**Chief Officer
ICFS (CSWO)**

Lead Service Managers



JCPT – Joint Child Protection Unit
AMH – Aberdeen Maternity Hospital
SCAi – Scottish Child Abuse inquiry
A&I – Assessment and Intervention
CiN – Children in Need
PAC – Permanence and care
CwD – Children with Disabilities
CRO - Children's Rights Officer
IRO – Independent Review Officer