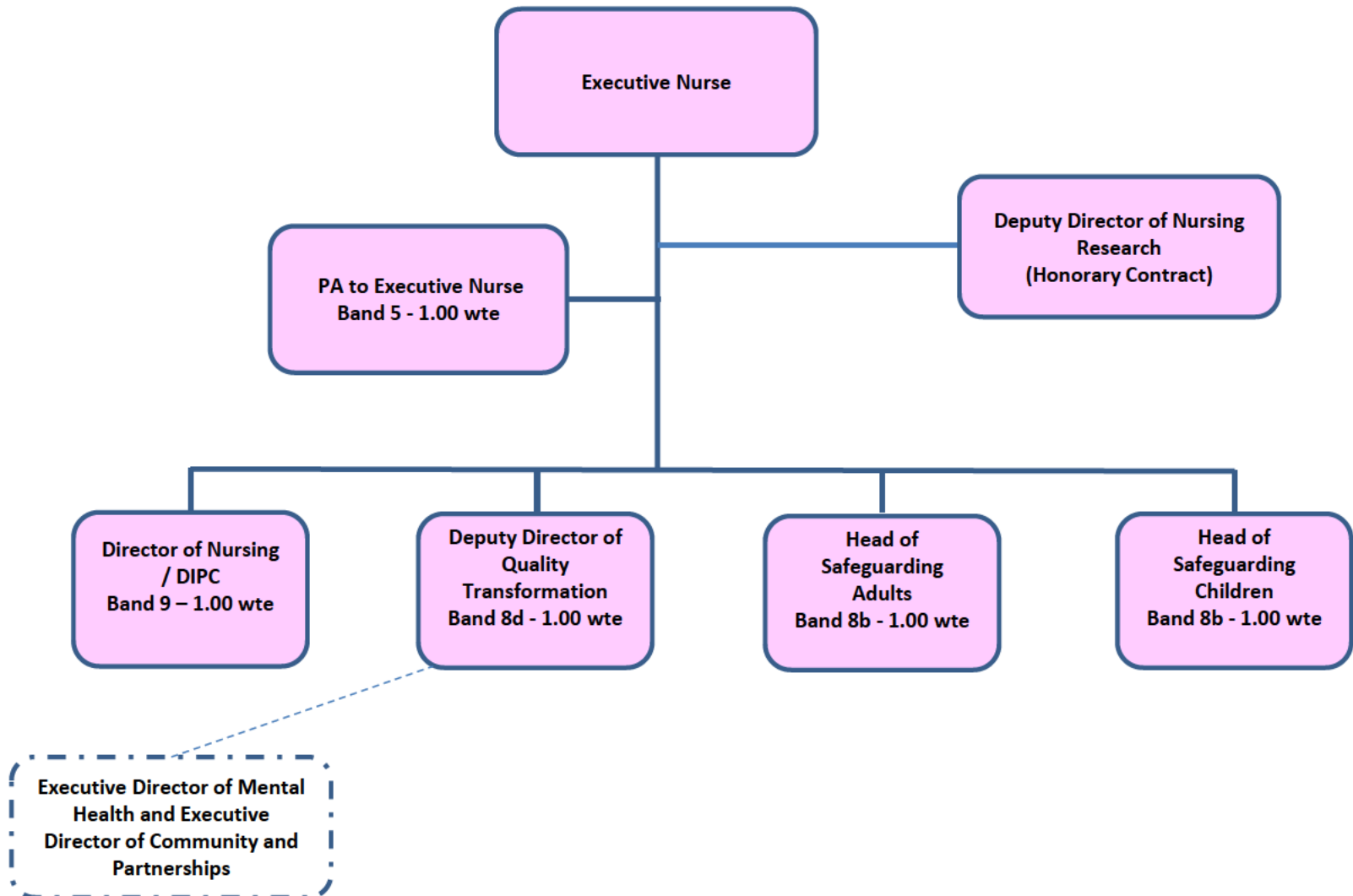
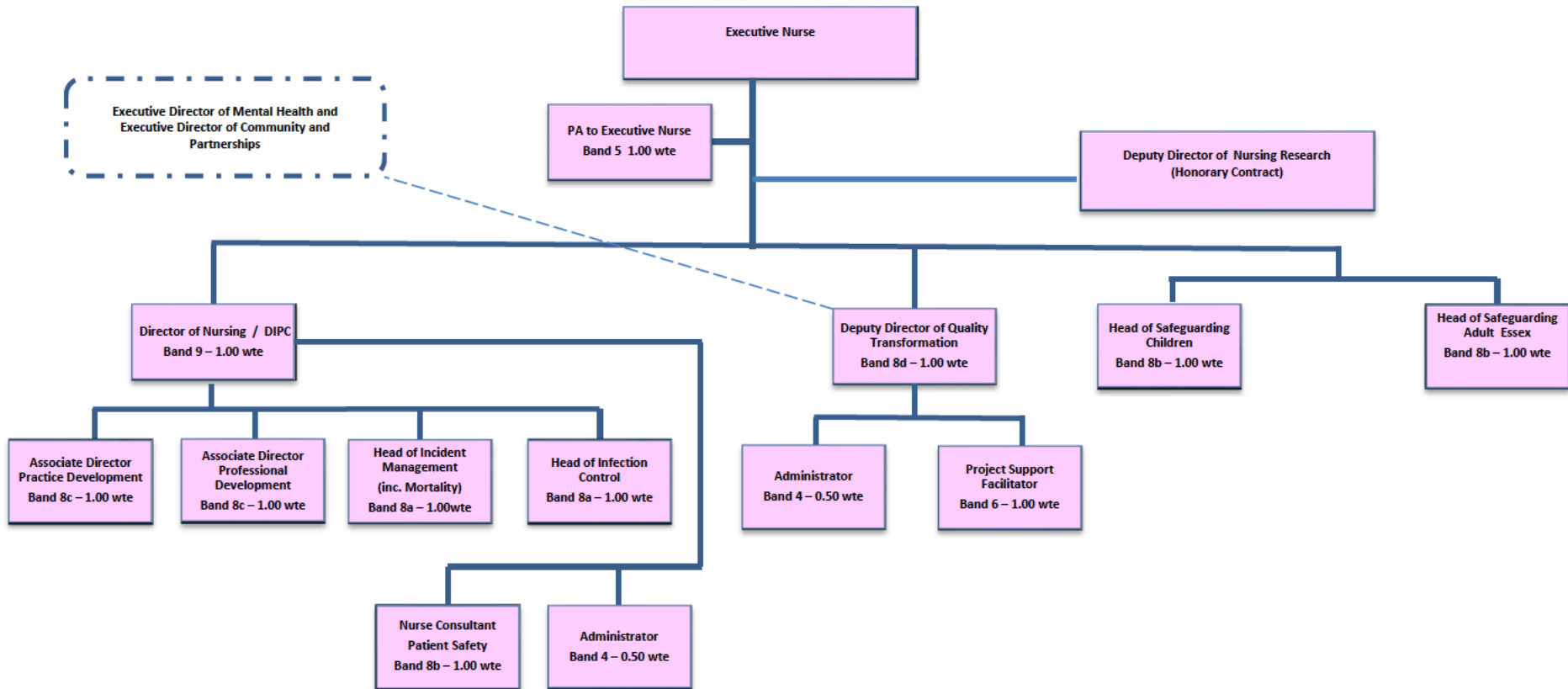


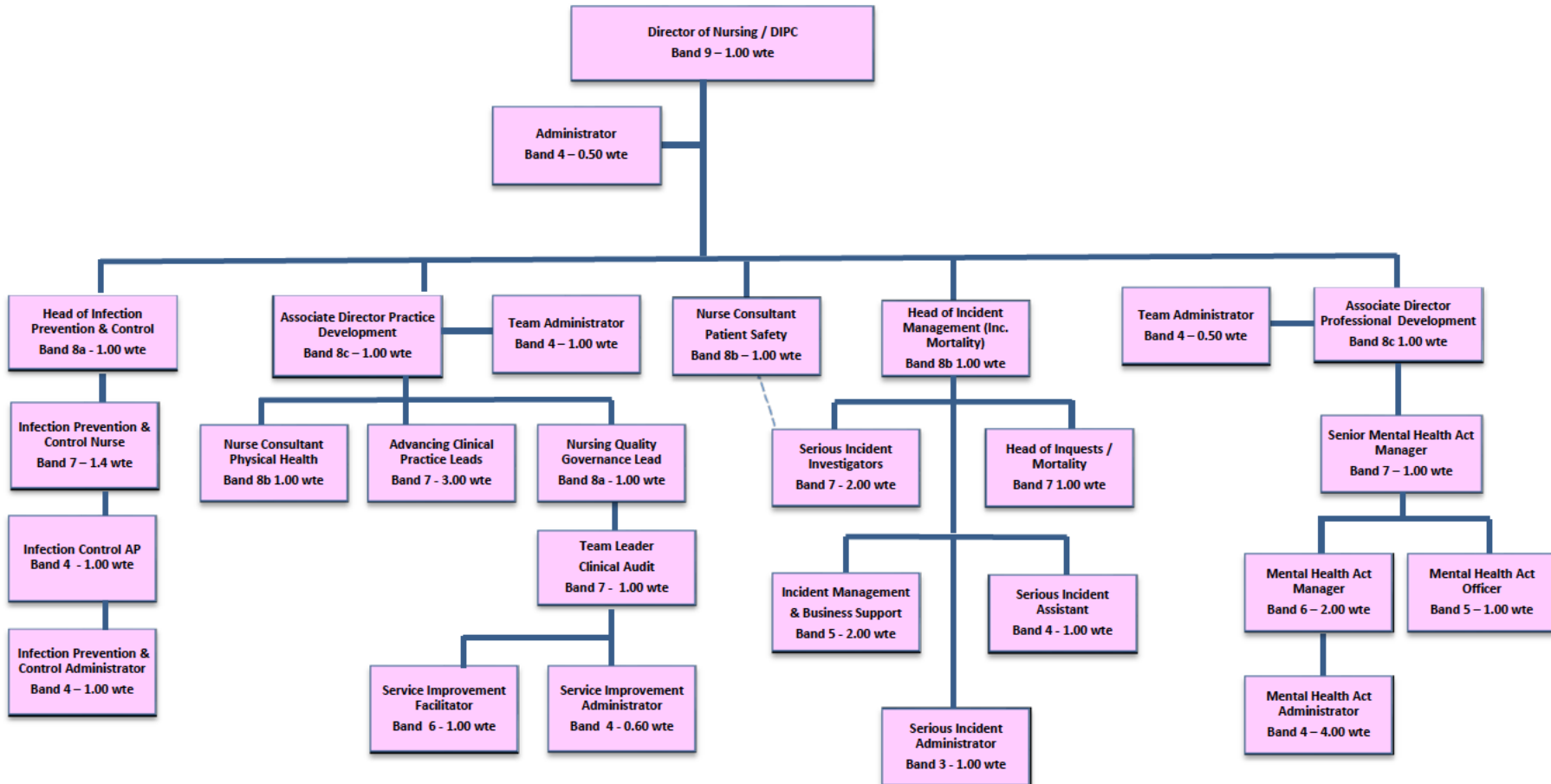
# Executive Nurse Directorate



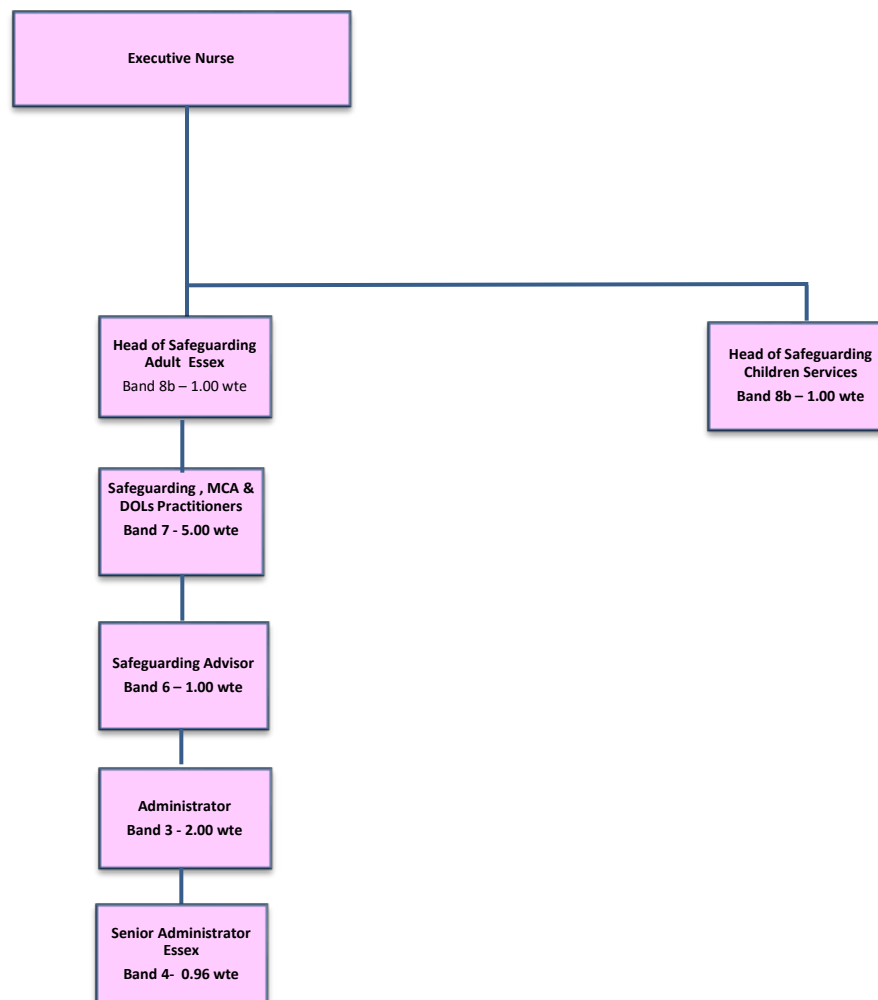
# Executive Nurse Directorate



# Director of Nursing and DIPC



# Safeguarding Directorate



## Operations Directorate

**Executive Director Mental Health,  
Deputy CEO**

PA to Executive Director  
Mental Health, Deputy CEO  
BS 1.00 WTE

Director Mental  
Health  
Mid & South Essex

3.1

Director Mental  
Health  
North East & West  
Essex

3.2

Director Specialist  
Services  
(CAMHS, LD,  
Substance, Forensic)

3.3

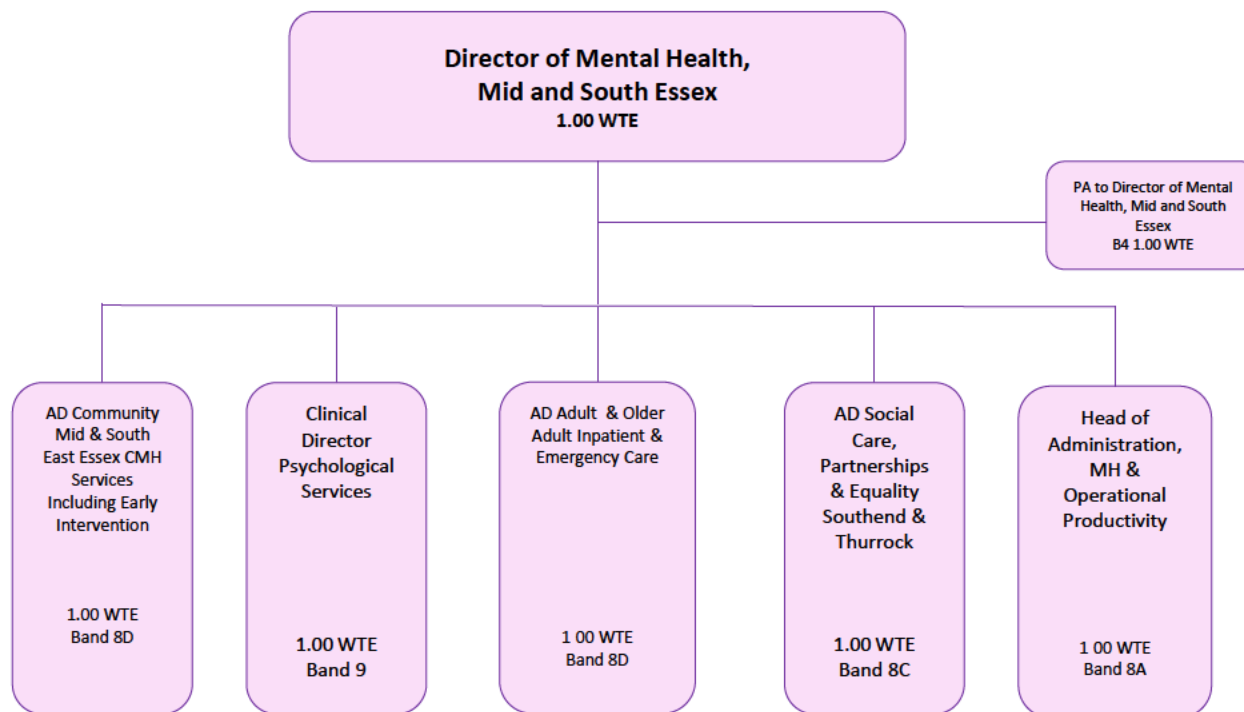
Director of Integrated  
Services  
Adult & Older People  
(South Essex)

3.4

Director of Health &  
Care Services Delivery  
(West Essex)

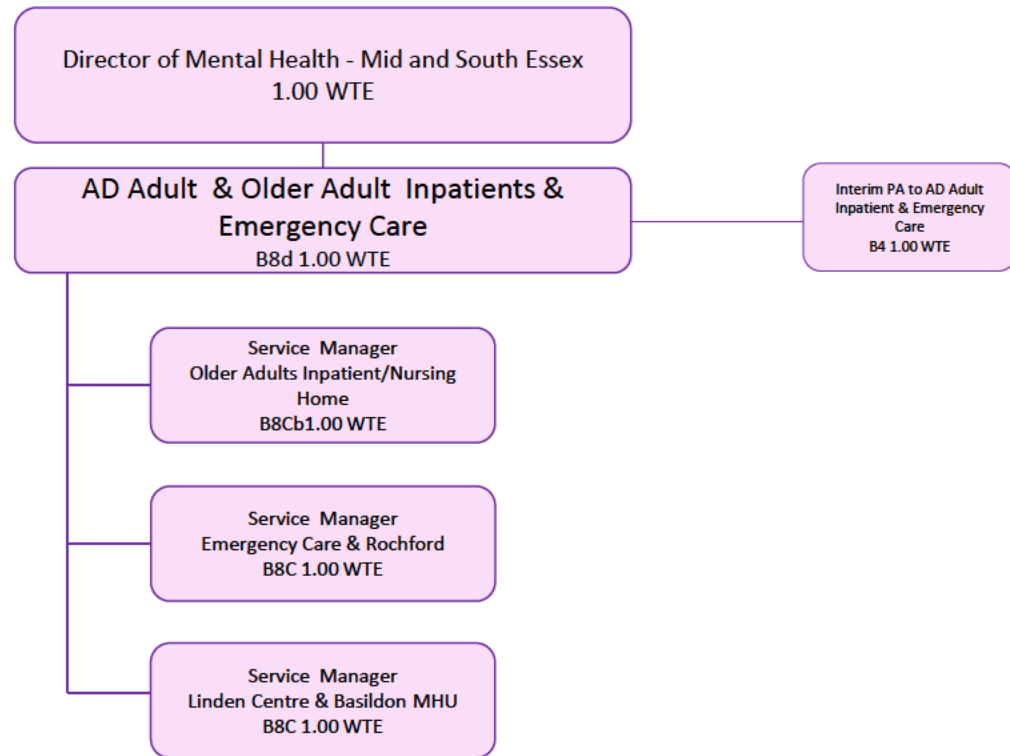
3.5

# Operations Directorate Mental Health



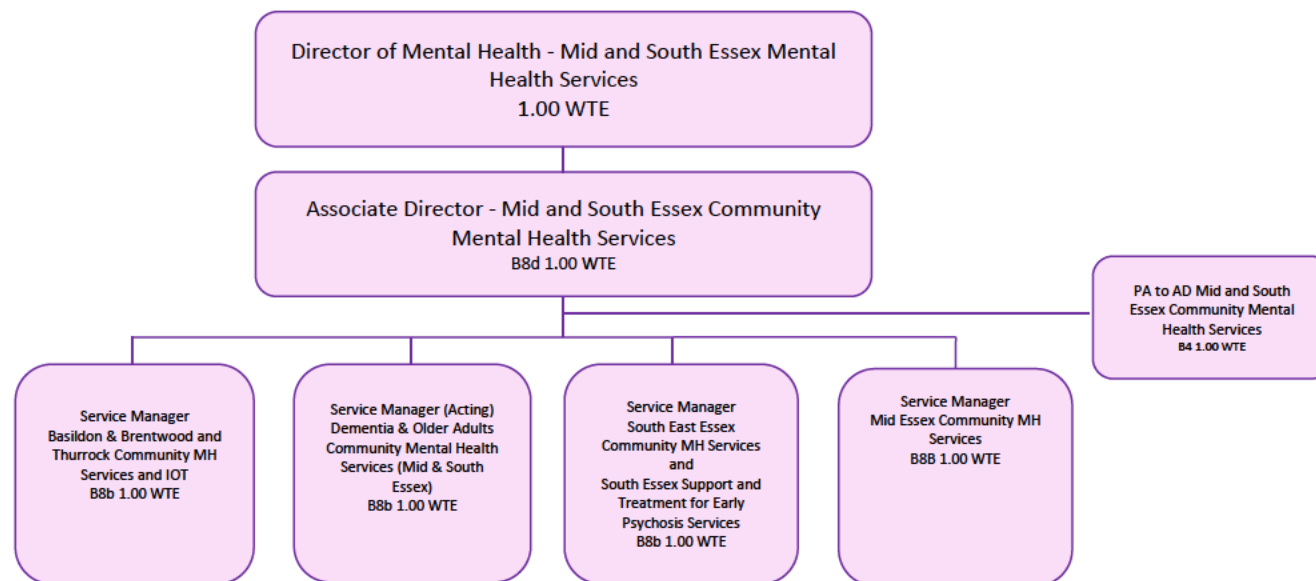
# Operations Directorate

## AD Adult Inpatients & Emergency Care – Mid & South Essex



# Operations Directorate

## Mid and South Essex Community Mental Health Services



# Operations Directorate Psychological Services

Director of Mental Health - Mid and South Essex  
1.00 WTE

Clinical Director of Psychological Services  
B9 1.00 WTE

PA to Clinical Director of  
Psychological Services  
B4 1.00 WTE

University of Essex  
DClinPsy Trainees

- 0.8wte (8D)  
- 0.4wte (8D)  
Associate Clinical Director Psychological Services

## Adult Mental Health

Head of Inpatient/EIP  
Services  
Consultant Clinical  
Psychologist  
B8c 0.6WTE

IoT & HTT  
Chartered Consultant  
Clinical Psychologist  
B8c 1.00 WTE

Head of ACP NE  
Consultant Clinical  
Psychologist  
B8c 1.00 WTE

Head of ACP NW  
Consultant Clinical  
Psychologist  
B8c 1.00 WTE

Head of ACP Mid  
Consultant Clinical  
Psychologist  
B8c 1.00 WTE

Head of ACP South  
Consultant Clinical  
Psychologist  
B8c 0.50 WTE

Head of ACP South  
Consultant Counselling  
Psychologist  
B8c 0.50 WTE

## Older Peoples MH/Dementia Services

Head of Older People  
Mid & West  
Consultant Clinical  
Psychologist  
B8c 1.00 WTE

Head of Older People  
North East  
Consultant Clinical  
Psychologist  
B8c 1.00 WTE

Head of Older People  
South  
Consultant Clinical  
Psychologist  
B8c 1.00 WTE

## Specialist Services

Head of CHPS Herts &  
Beds – Consultant Clinical  
Psychologist  
B8d 0.40 WTE

Head of CHPS Essex  
Consultant Clinical  
Psychologist  
B8c 0.50 WTE

Head of Secure & Forensic  
Service  
Consultant Clinical  
Psychologist  
B8c 1.00 WTE

Cancer & Palliative (Herts)  
Macmillan Consultant  
Clinical Psychologist  
B8c 1.00 WTE

Lead for Personality  
Disorder Service  
B8d 0.8 WTE

Head of Aspergers/ASD  
Consultant Clinical  
Psychologist  
B8c 1.00 WTE

Head of Infant Mental Health  
Service  
Lead for Perinatal Psychology –  
Consultant Clinical Psychologist  
B8b 1.00 WTE

Head of CAMHS Adolescent  
Inpatient Services  
Consultant Clinical Psychologist  
B8c 1.00 WTE

Head of Eating Disorders  
Service  
Consultant Family  
Psychotherapist  
B8c 1.00 WTE

## Psychotherapy

Head of Psychotherapy  
Consultant  
Psychotherapist  
B8c 1.00 WTE

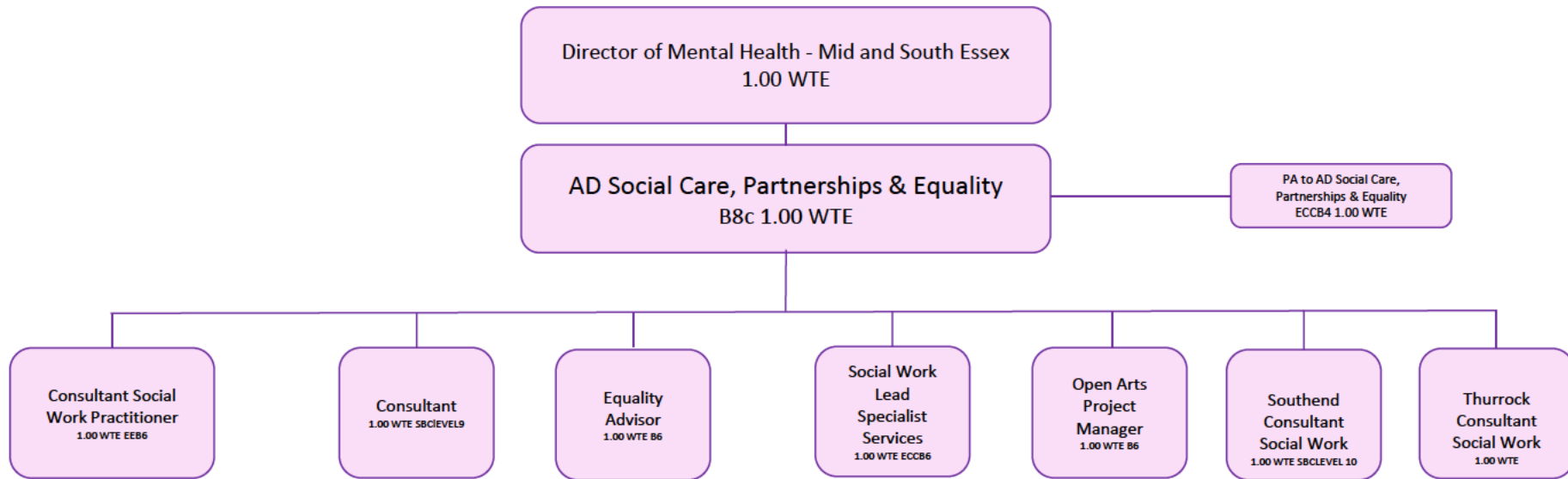
## IAPT

Head of Primary  
Care Psychological  
Therapy Services  
Consultant  
Psychotherapist  
B8c 1.00 WTE

Head of IAPT  
Services  
Consultant  
Psychotherapist  
B8c 1.00 WTE

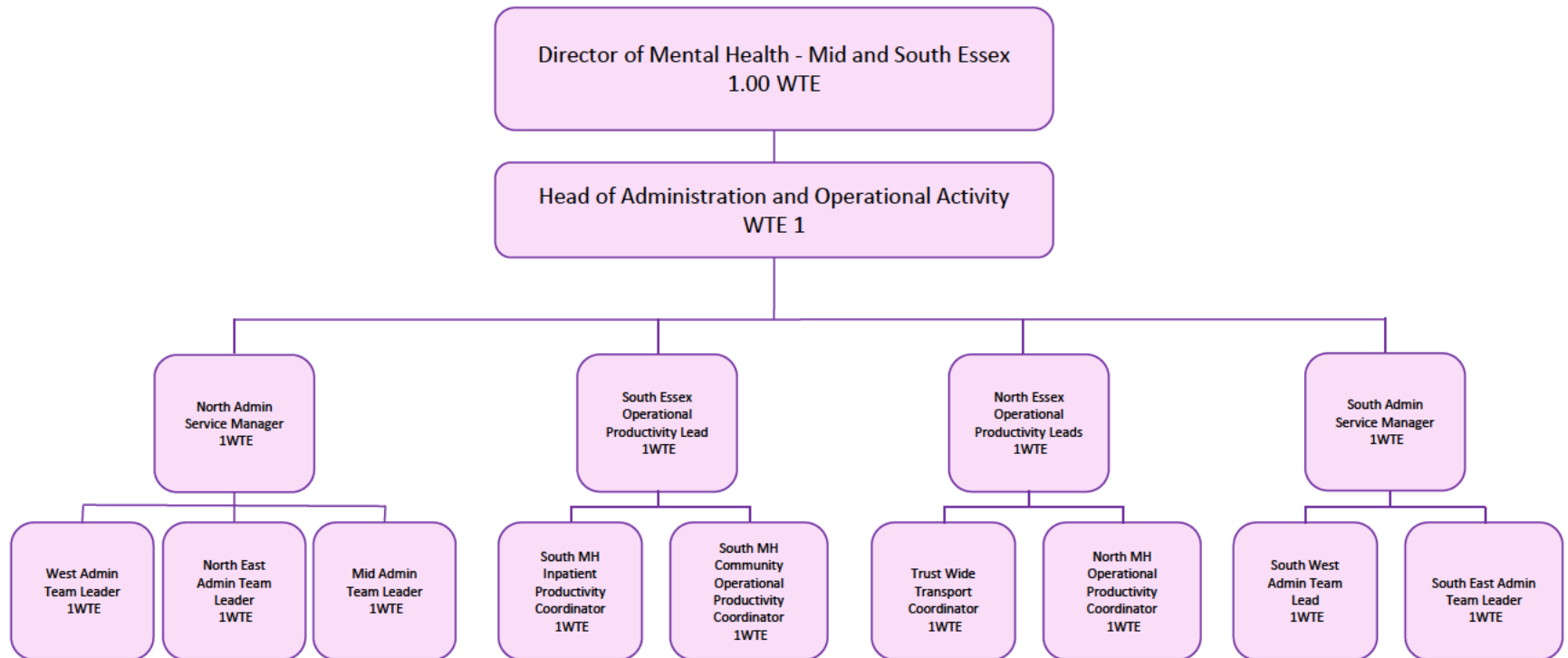
# Operations Directorate

## Social Care, Partnerships & Equality

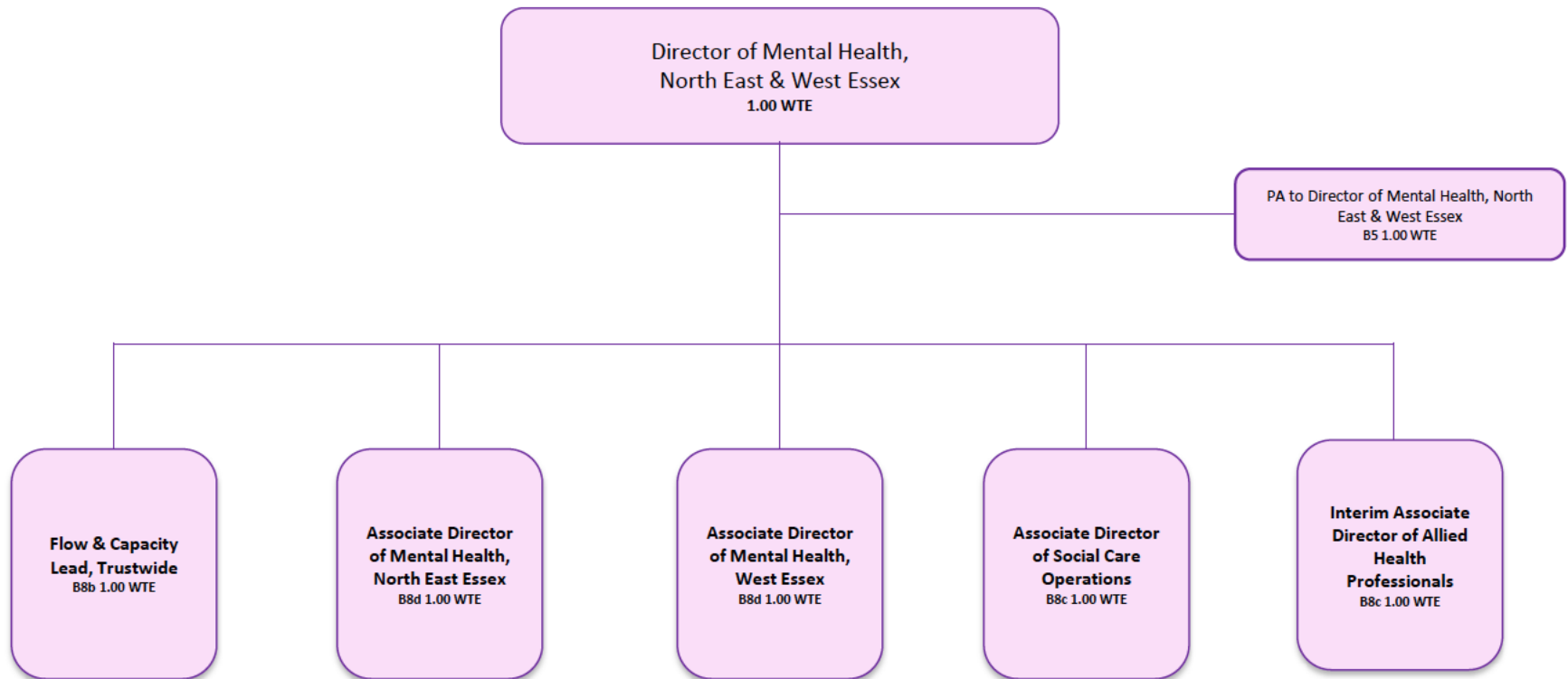


# Operations Directorate

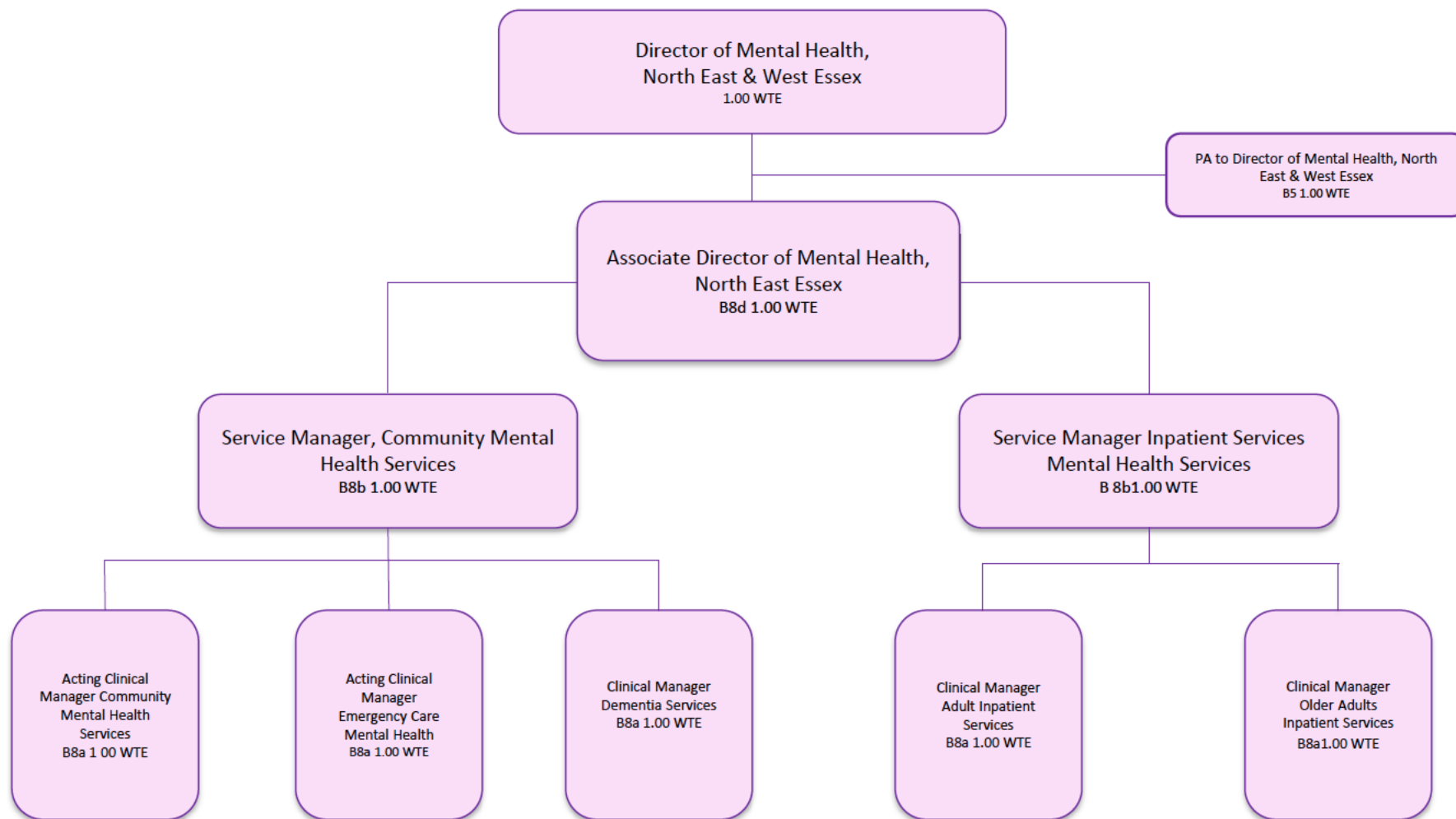
## Older Adult Inpatients MH Service



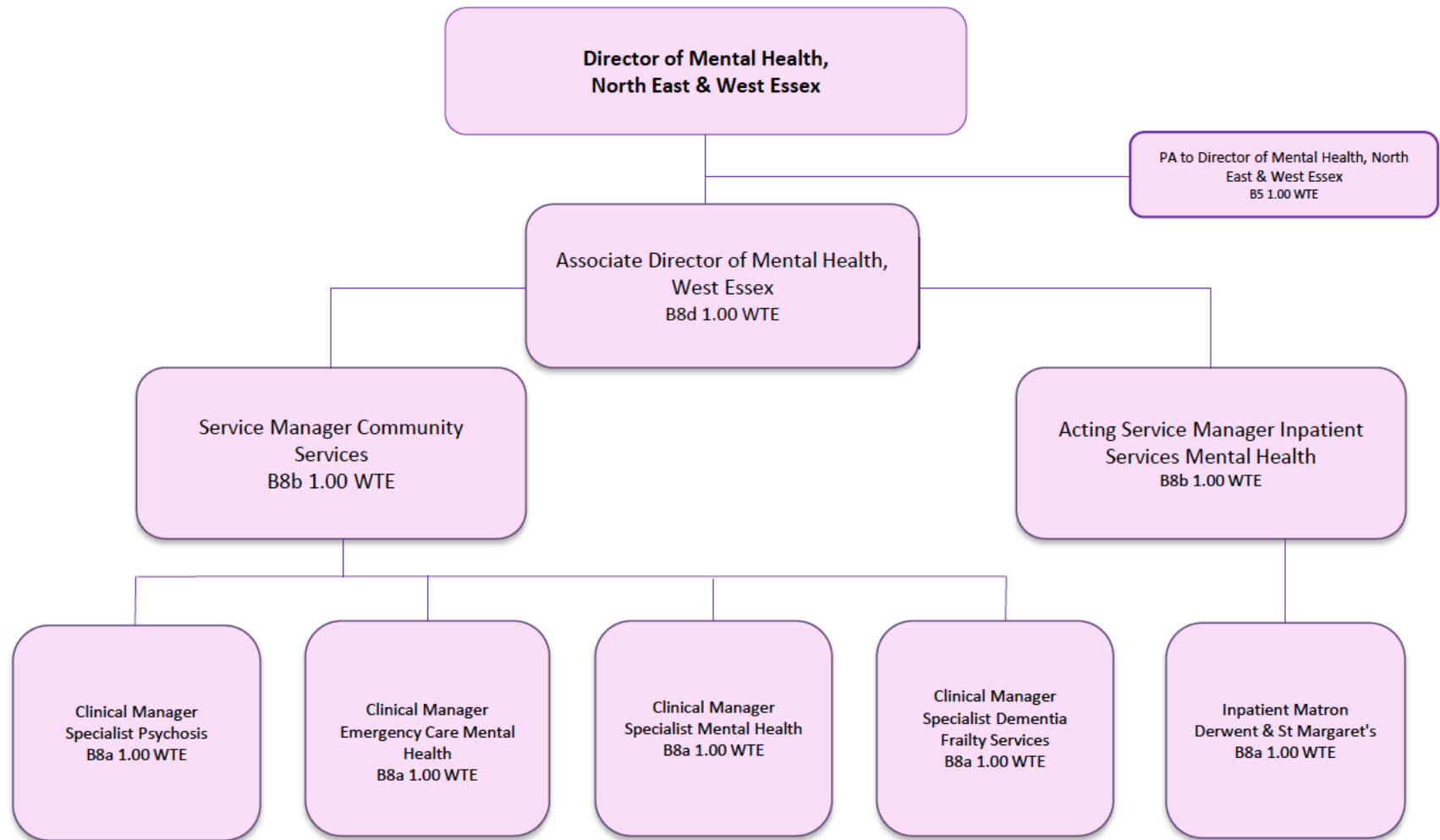
# Operations Directorate North East Mental Health



# Operations Directorate North East Essex



# Operations Directorate West Essex



# Operations Directorate

## Social Care, Operational

Director of Mental Health,  
North East & West Essex

AD Social Care Operational  
Band 8c 1wte

PA to AD Social Care Operational  
Band 4 1wte

Community /  
Inpatient  
Social Workers

Admin

STR support

Essex S75

Care Planning  
Development  
B7 1wte

Social Work  
Consultant  
B8a 0.8 wte

Social Work  
Consultant  
B8a 1wte

B8a 0.4 wte  
B8a 0.6wte  
Social Work  
Consultant

Business  
Support/  
Performance  
Manager  
B6 1wte

Social Work  
Consultant  
B8a 1wte

FGC Team  
Leader  
B8a 1wte

Vocational  
Services  
Manager  
B8a 1wte

EmployAbility  
Essex

Employment  
Service  
Essex

Heads Up

Care Planning  
Support Officer  
B5 1wte

Care Planning  
Support Officer  
B5 1wte

Senior Social  
Worker  
B7 1wte

Think Ahead  
Participants  
North

FGC Team

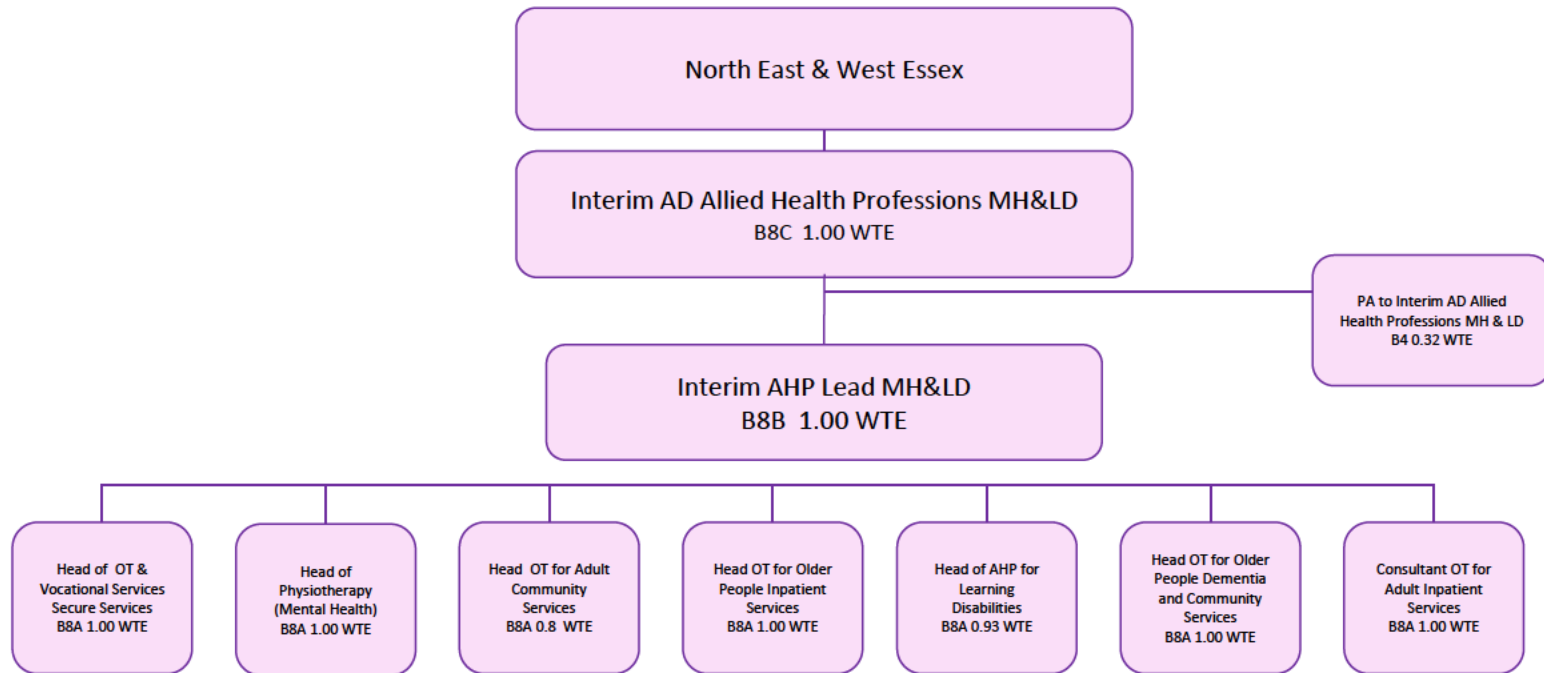
Heads Up

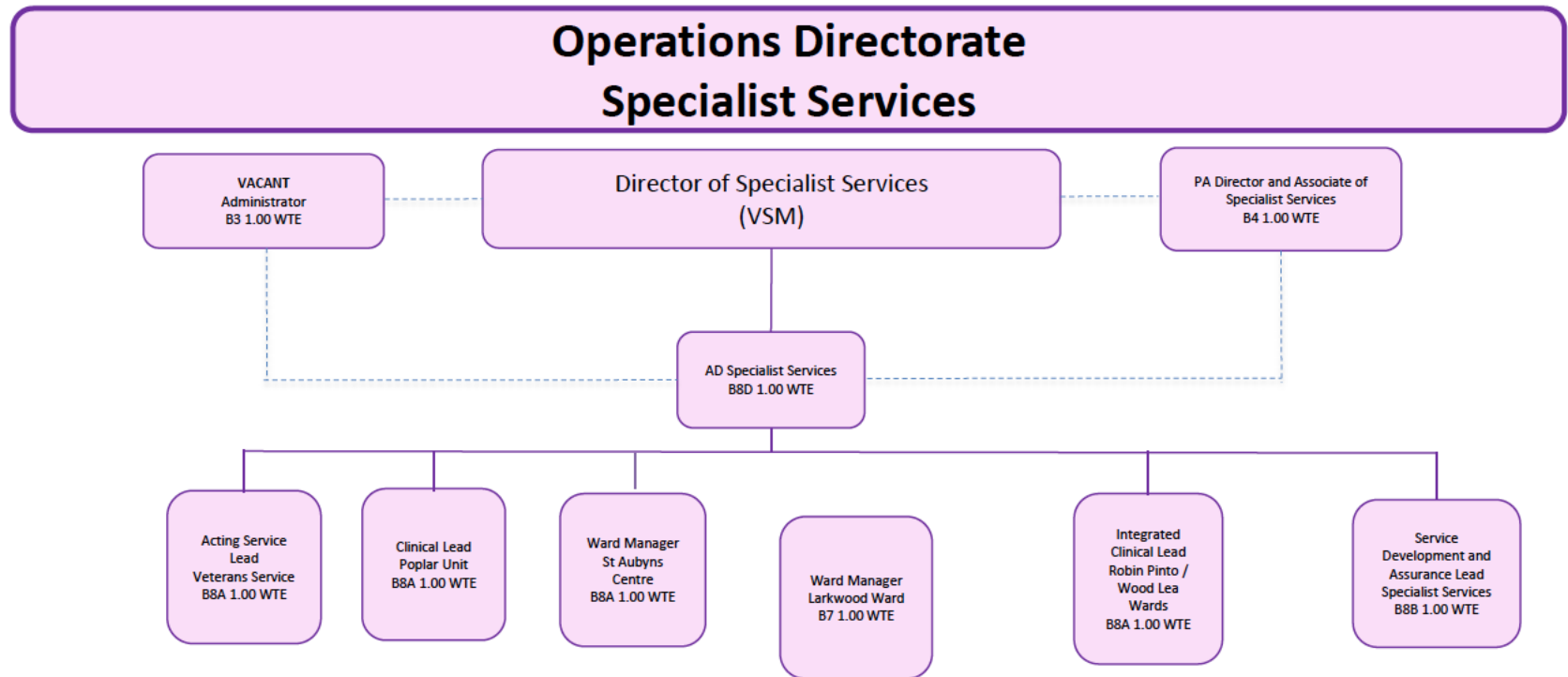
EmployAbility  
Suffolk

Review and  
Recovery  
Project

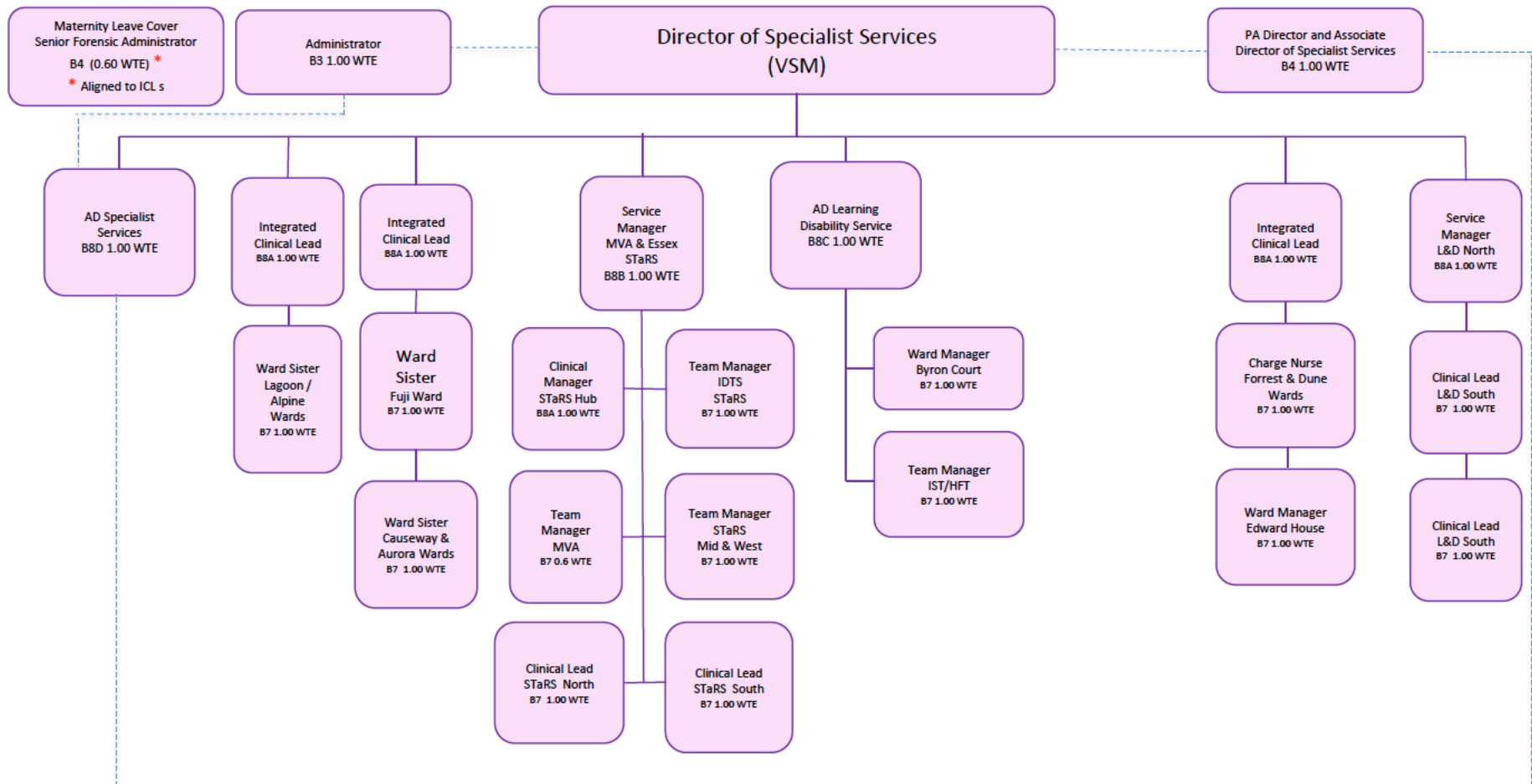
Employment  
Service  
Suffolk

# Operations Directorate Allied Health Professions



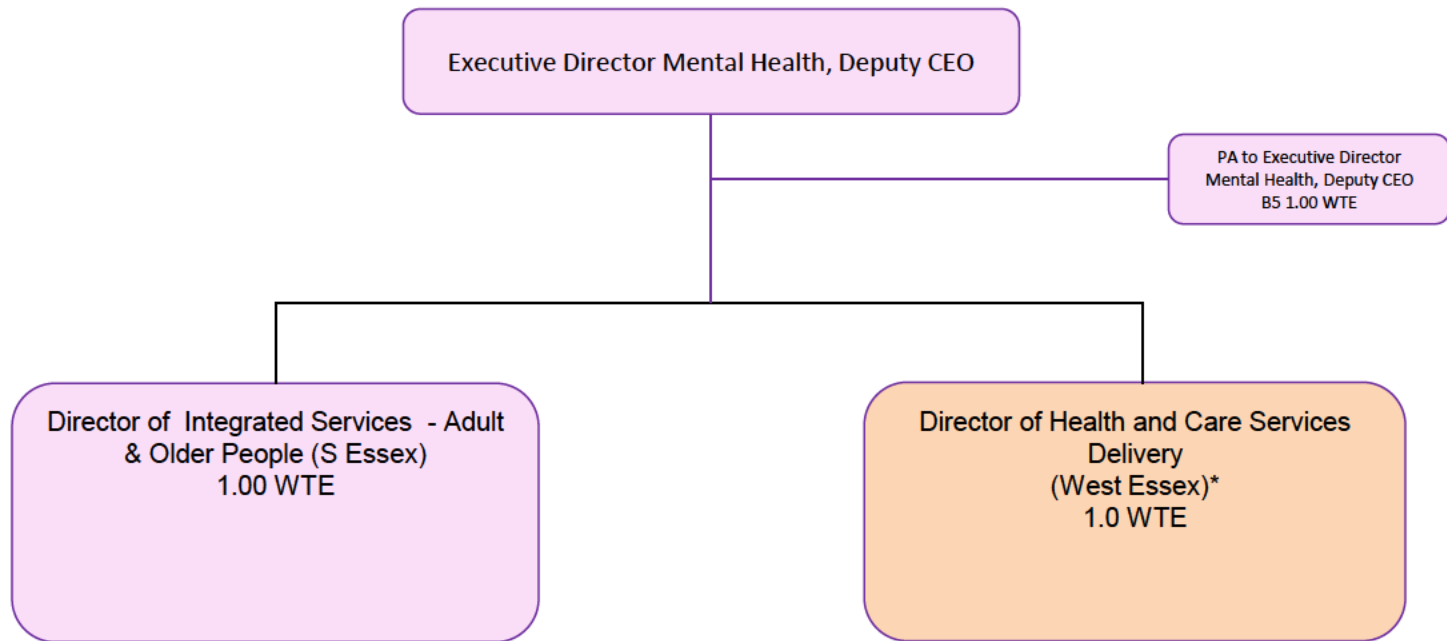


## Operations Directorate Specialist Services



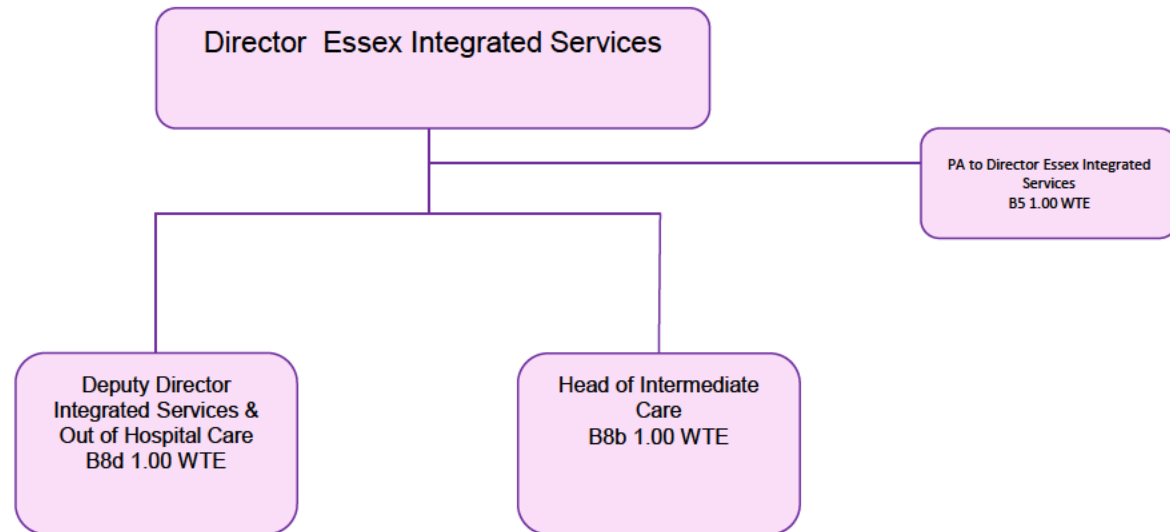
\* N.B Post holder 1.00 WTE, bank covers 0.60 WTE

# Operations Directorate Community Integrated Services



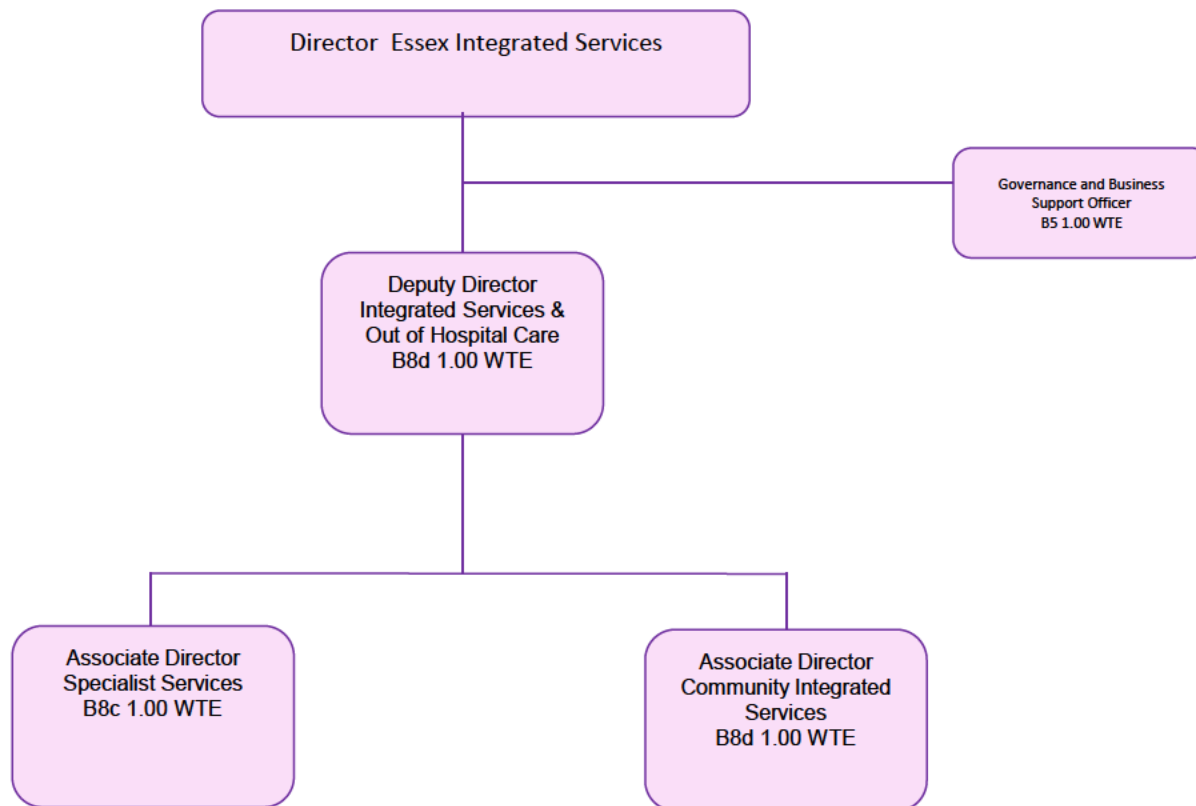
**\* Joint Appointment  
with ECC**

# Operations Directorate Community Integrated Services



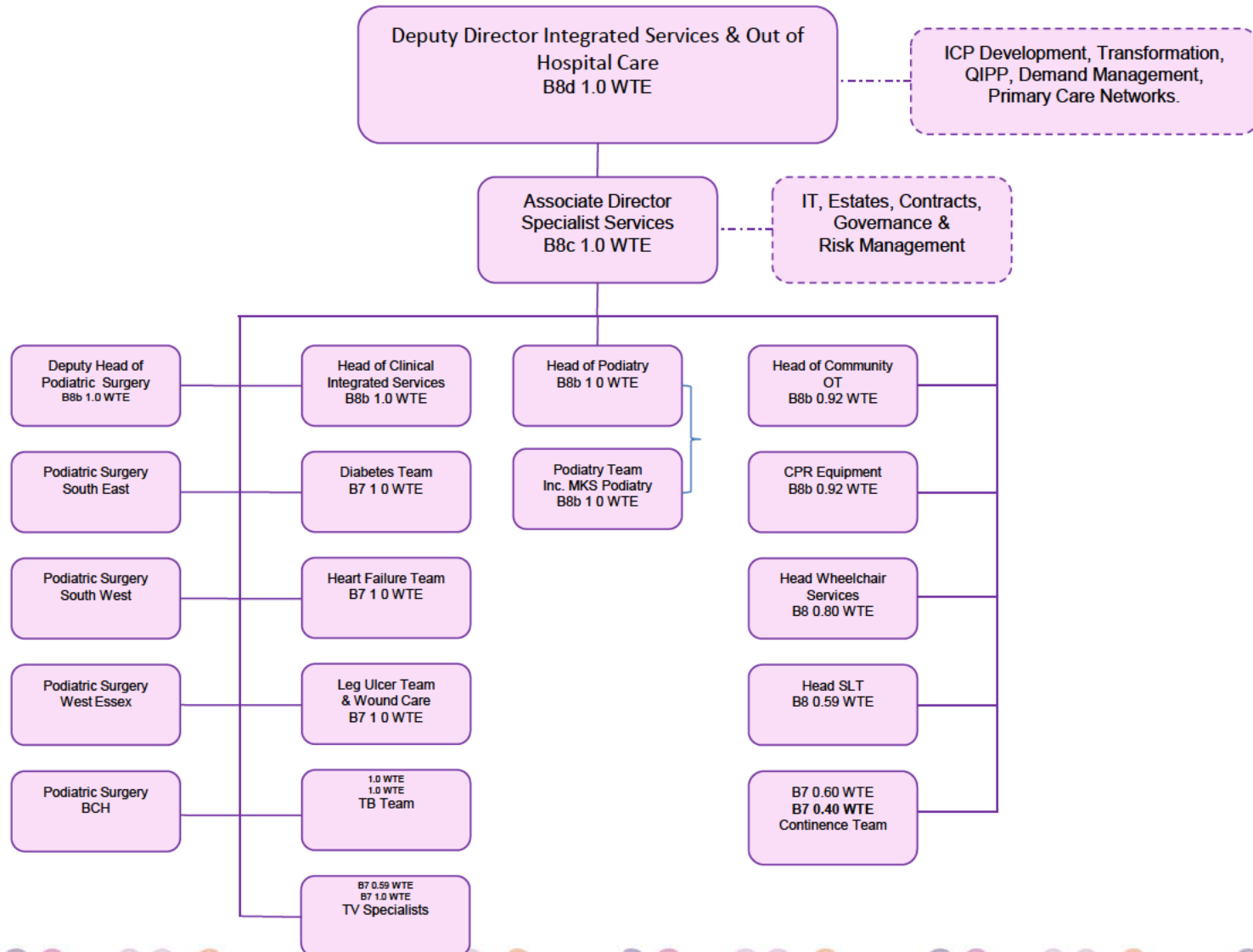
# Operations Directorate

## Community Integrated Services



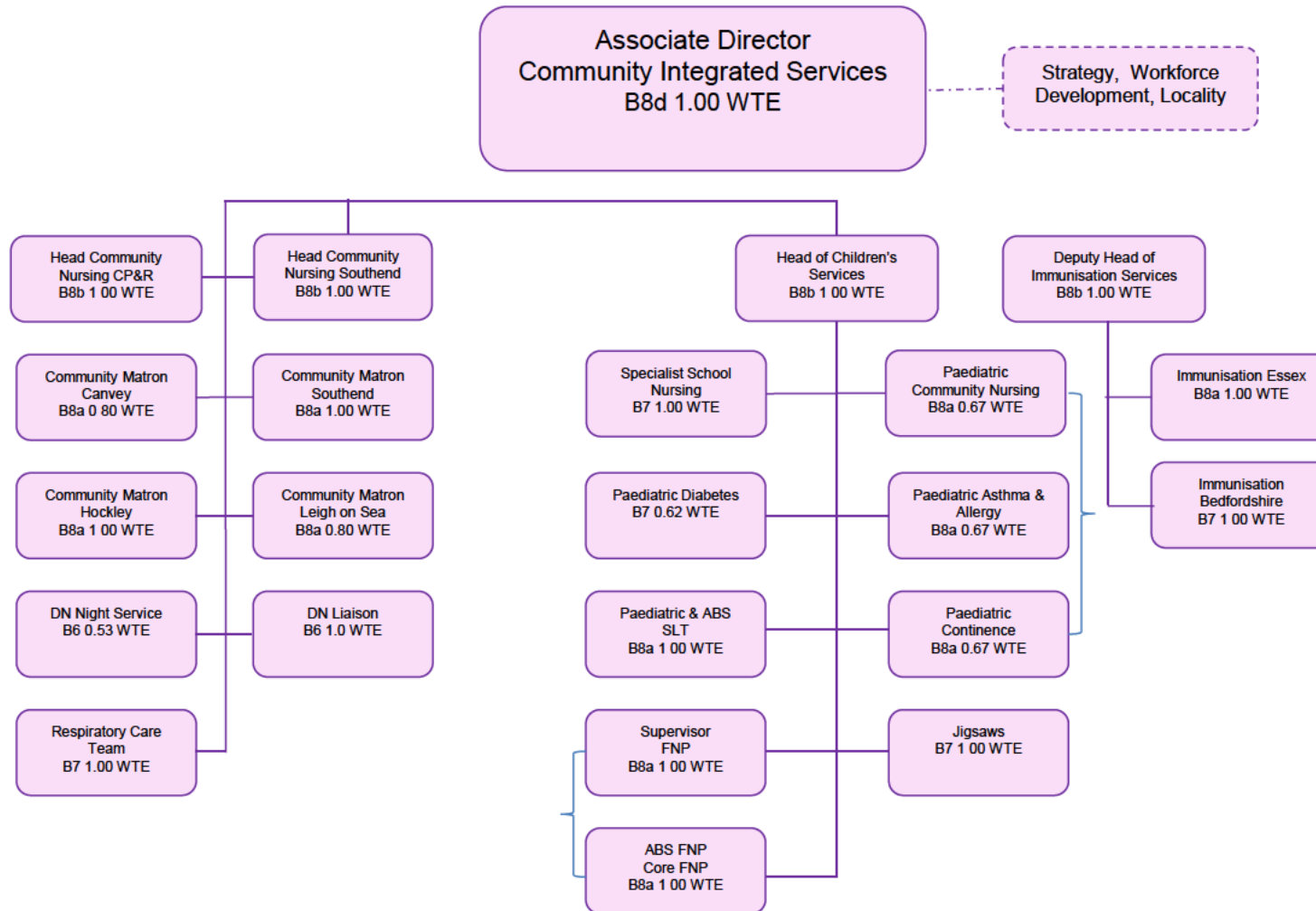
# Operations Directorate

## Community Integrated Services



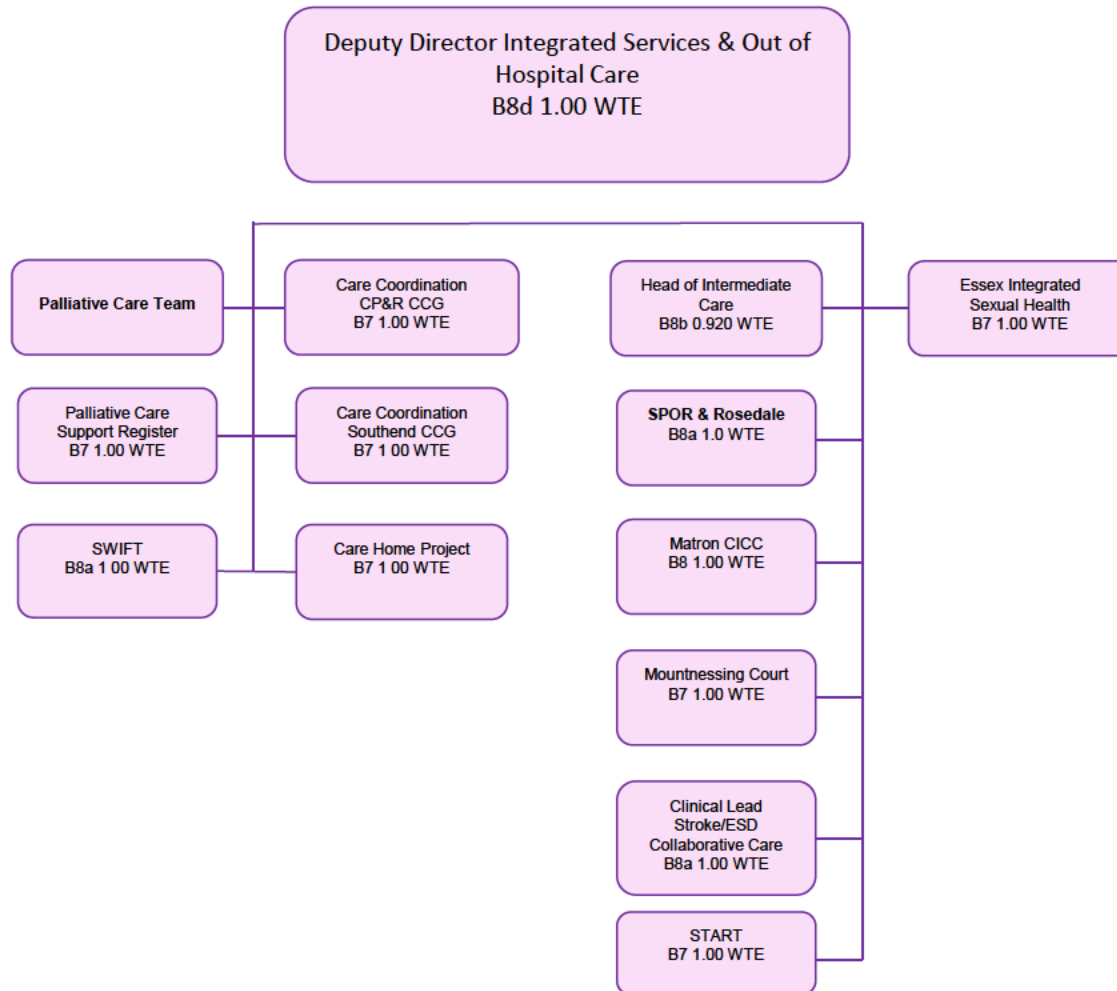
# Operations Directorate

## Community Integrated Services



# Operations Directorate

## Community Integrated Services



# Operations Directorate

## West Essex Community Integrated Services

